



SHAKESPEARE OIL COMPANY, INC. STOLL #-22

2440' FSL & 1740' FWL of Section 22-T16S-R34W
SCOTT COUNTY, KANSAS
API#15-171-21087-00-00

Geologist's Report WellSight Systems

Scale 1:240 (5"=100') Imperial
Measured Depth Log

Well Name: Stoll #1-22
API: 15-171-21087-00-00
Location: 2440' FSL & 1740' FWL of Section 22-T16S-R34W
License Number: KLN #7311
Spud Date: 9/08/2014
Surface Coordinates: 2440' FSL & 1740' FWL of Section 22-T16S-R34W
Region: Scott County, Kansas
Drilling Completed: 9/18/2014

Bottom Hole Vertical Test D&A
Coordinates:
Ground Elevation (ft): 3128 K.B. Elevation (ft): 3140
Logged Interval (ft): RTD To: 3750 Total Depth (ft): RTD 4916 LTD 4914
Formation: Mississippi
Type of Drilling Fluid: Chemical (Displacement complete @ 3507)

Printed by MUD.LOG from WellSight Systems 1-800-447-1534 www.WellSight.com

Operator

Company: Shakespeare Oil Company, Inc. KLN# 7311
Address: 202 W Main
Salem, IL 62881

Geologist

Name: Richard S.(Steve) Davis Jr.
Company: Petroleum Geologist
Address: 212 N. Market, Suite 268
Wichita, Kansas 67202

FORMATION TOPS

Formation	Sample	E-Log	KB	3140	Formation	Sample	E-Log	Datum
			Datum	Formation				
Anhydrite	2450	2448	+692	Hushpuckney	4359	4354	-1214	
B/Anhydrite	2470	2467	+673	Lansing L	4361	4357	-1217	
Topeka	3821	3819	-679	BKC	4415	4411	-1271	
Heebner	3991	3988	-848	Marmaton	4460	4456	-1316	
Toronto	4006	4002	-862	Pawnee	4543	4540	-1400	
Lansing	4032	4030	-890	Fort Scott	4583	4581	-1441	
Lansing D	4146	4149	-1009	Cherokee Sh	4611	4609	-1469	
Muncie Creek	4216	4212	-1072	Johnson	4653	4651	-1511	
Lansing H	4229	4234	-1094	Mississippi	4808	4804	-1664	
Lansing I	4265	4262	-1122	Total Depth	4916	4914	-1774	
Lansing J	4294	4289	-1149					
Stark	4318	4313	-1173					
Lansing K	4328	4323	-1183					

DAILY PENETRATION: 7:00 AM

Date	Depth	Activity
09/08/14	0	MIRU & Spud
09/09	265	WOC
09/10	1500	Drlg
09/11	2080	Drlg
09/12	2913	Drlg
09/13	3507	Drlg
09/14	4024	Drlg
09/15	4449	Drlg
09/16	4525	Drlg
09/17	4682	Drlg
09/18	4834	Drlg
09/20	4916	P&A

CONTRACTOR:

Southwind Drilling, Rig #70

Toolpusher: Sam Staggs

MUD:

Mud Co (displacement complete @ 3507)

Reid Atkins

DRILL STEM TESTING: Trilobite Testing Inc.

Justin Harris

ELECTRIC LOG: Weatherford

Derek Carter

(DIL, CDL/CNL, PE, MEL & Sonic)

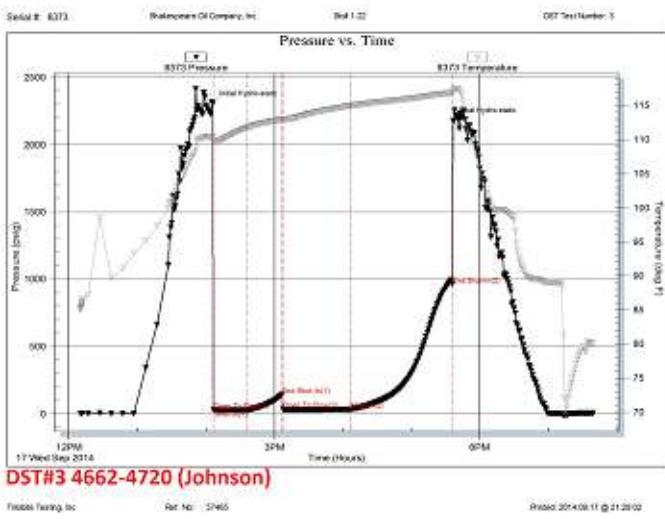
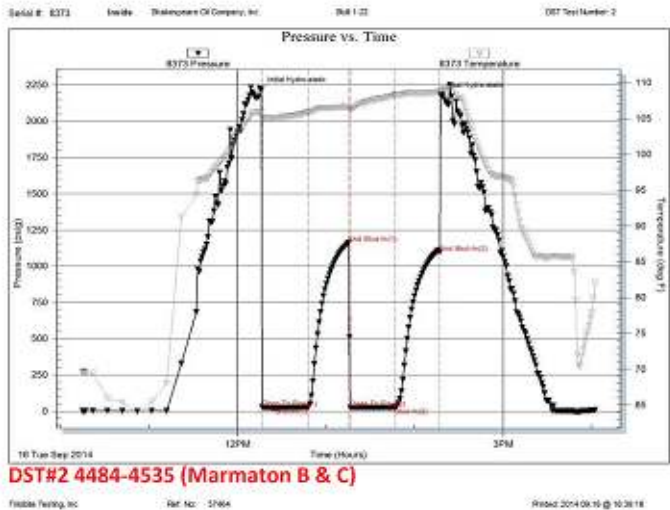
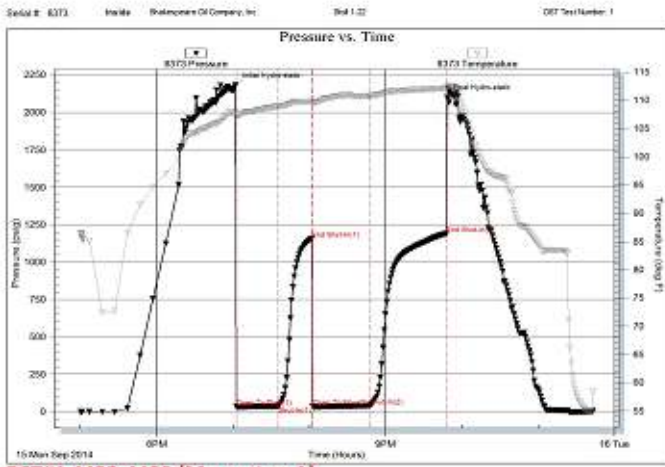
CASING RECORD:

Surface: 8 5/8" @ 265' w/ 225 sx

Production: None

BIT RECORD:

Bit No./Size	Make/Type	Out	Ftg	Hrs
#1/ 12 1/4"	RTC/RT	265	265	2 1/4
#2/ 7 7/8"	RTC/S52P	4916	4651	138



Rock Types

LITHOLOGY

- Anhy
- Bent
- Brec
- Cht
- Clyst

- Coal
- Congl
- Dol
- Gyp
- Igne
- Lmst

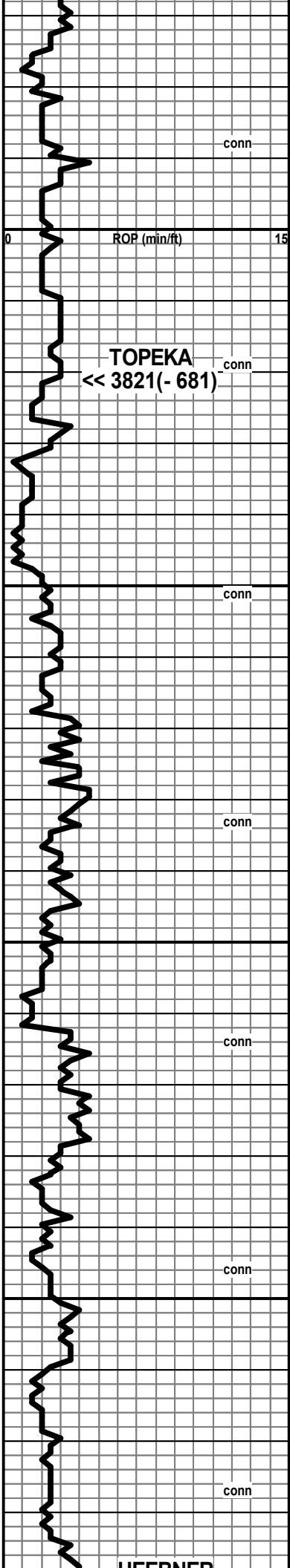
- Meta
- Mrlst
- Salt
- Shale
- Shcol
- Shgy

- Slst
- Ss
- Till

- Spotted
- Ques
- Dead

- OIL SHOW**
- Even

ROP (min/ft)	Depth	Lithology	Geological Descriptions	Remarks
ROP (min/ft) ————— 0 ————— 15	3750			
				conn



3800

3850

3900

3950

Start 10' Wet & Dry @ 3800

TOPEKA
 << 3821(- 681)

LS, brn-gray, f-vfxln, chky IP, foss & ool, P ipart por, NS, mhd

LS, tan-gray, f-mxln, arg, sub ool-foss, NV por, mhd-sft

Shale, black, gray & mar, some silty

LS, gray-tan, vf-micxln, chty, sharp, NV por, dense

Shale, black, dk gray

Shale, black, gray, grn & mar, silty + sltst, gray-gn

LS, white-tan, f-vfxln, chky IP, sltly foss, P pp-vgy por, SSFO, spt'd asph stn, dull fluor, N odor + Cht, tan, sltly foss, opq

LS, brn-gray, vf-micxln, sltly foss, NV por, dense

Shale, dk gray & mar

LS, gray-tan, vfxln, sltly foss, NV por, dense

Shale, black carb

LS, crm-off white, f-vfxln, chky, foss, P ixln por, NS, sft

LS, crm-tan, f-vfxln, foss & ool, F ipart por, SSFO(hvy), spt'd asph stn, dull spt'd fluor, N odor

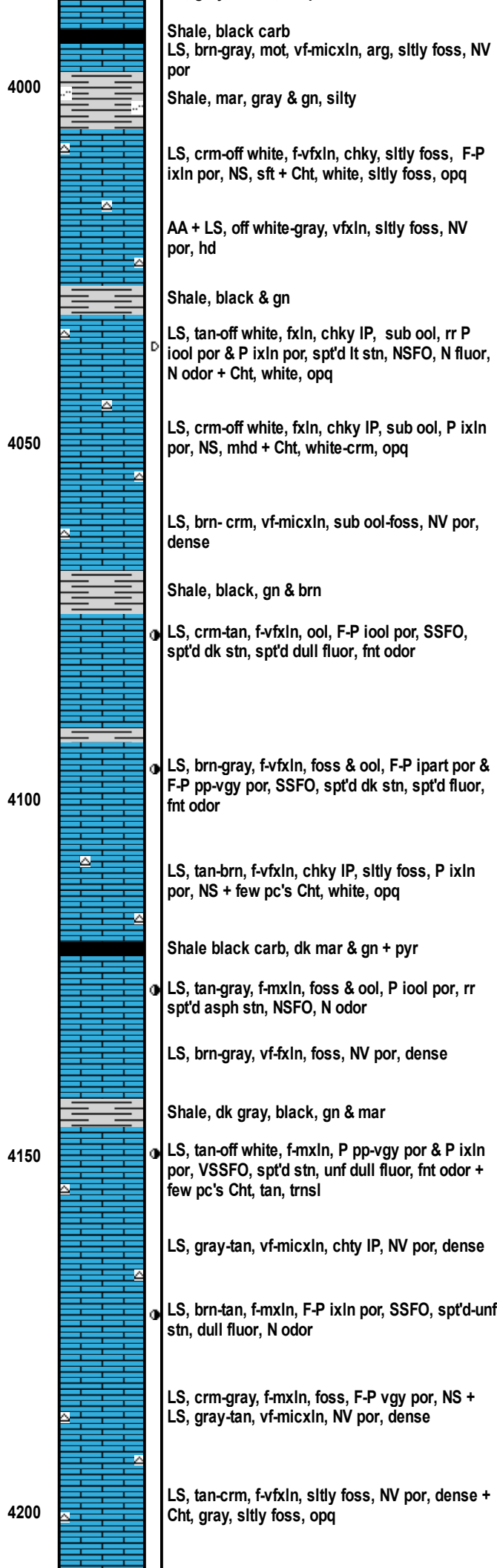
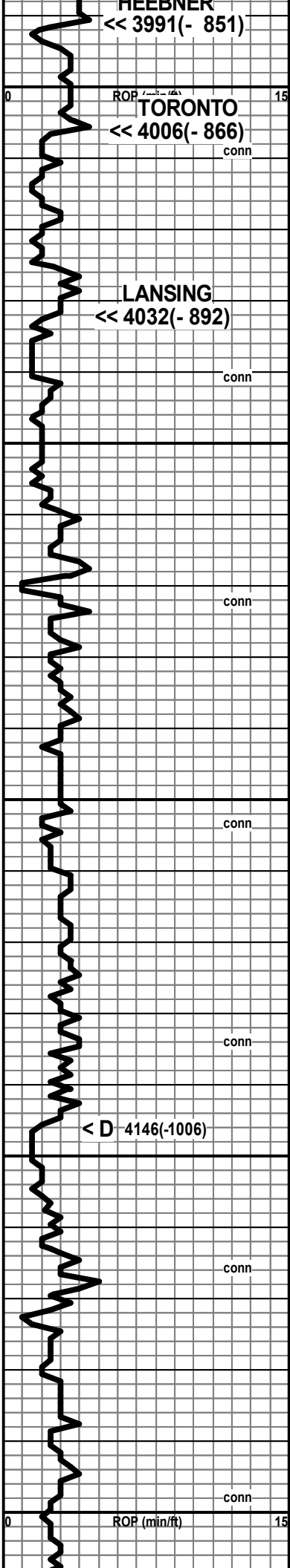
LS, tan-gray, f-vfxln, sltly foss, NV por, hd

LS, dolo, tan-crm, fxln, P ixln por, rr spt'd stn, NSFO, N odor

LS, brn-gray, f-vfxln, chky IP, sltly foss, NV por + Cht, white-tan, opq

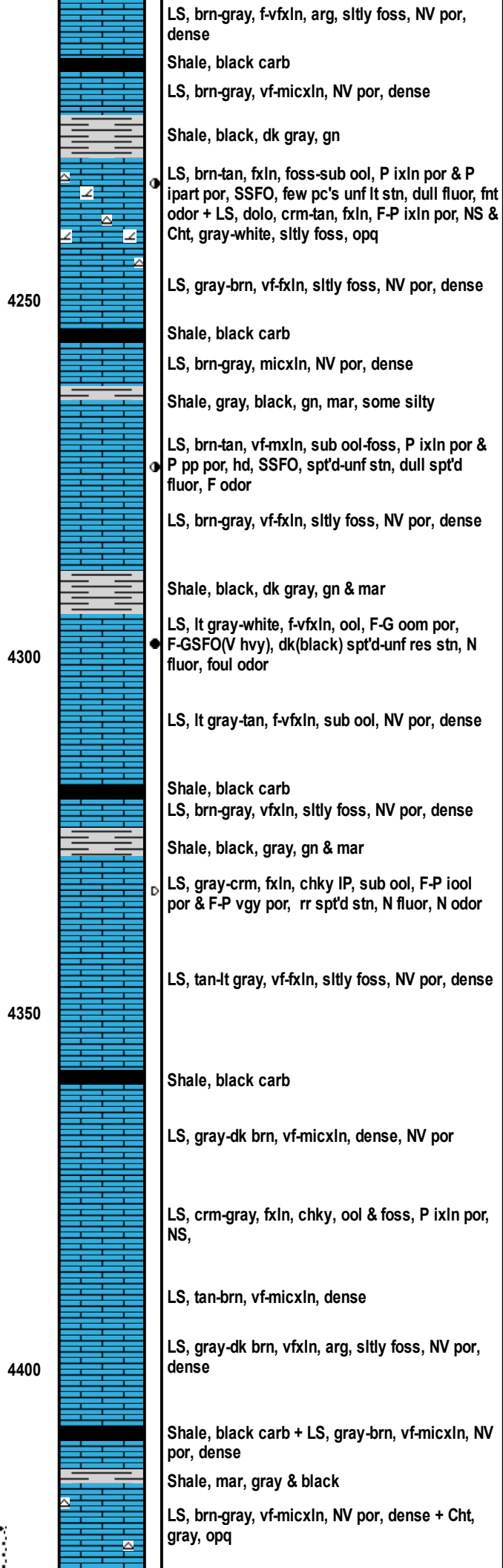
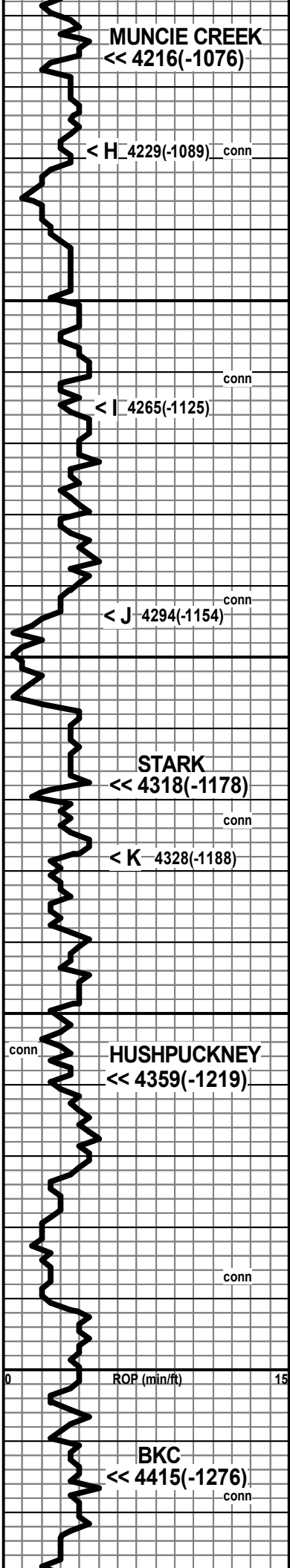
LS, gray, f-vfxln, NV por, dense

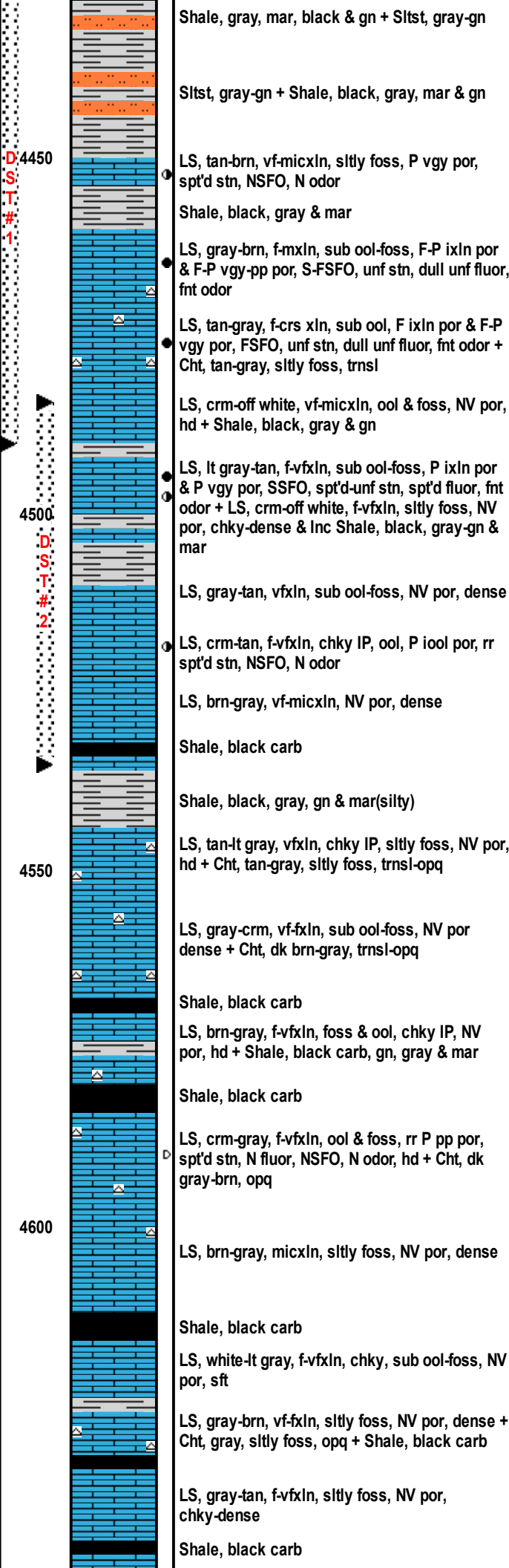
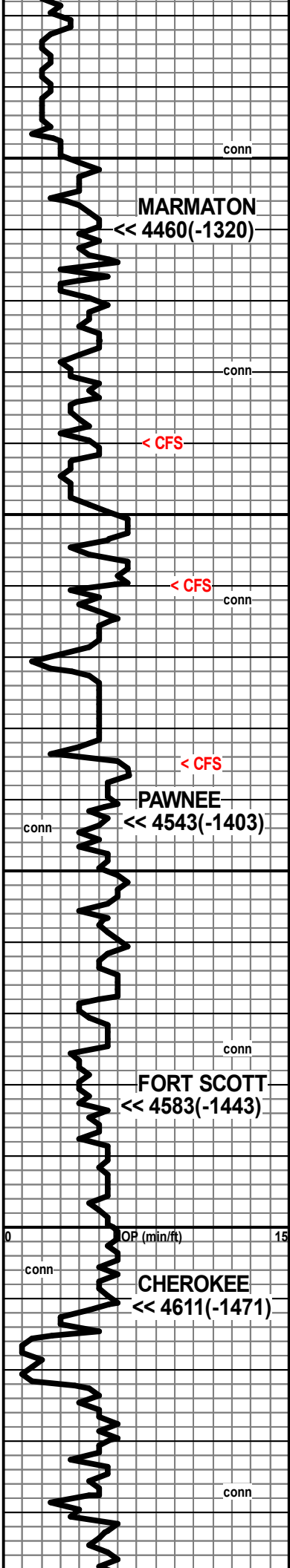
HEERBERG



Vis 50 Wt 9.1 Fil 9.6 PH 10
 Chl 4,000 LCM 1#
 9/14/14 @ 4042

Vis 46 Wt 9.1





PIPE STRAP & SURVEY @ 4490
 Strap 3.48' short to board
 Survey 2 1/2 deg

DST #1 4422 - 4490
 (Marmaton A)
 30 30 45 60
 BLOW:
 IF Surface built to 1"
 FF Surface built to 1 1/2"
 RECOVERY: 31' GIP
 5' SGCO (1%g 99%o)
 31' G&MCO (5%g 55%o 40%o)
 36' TOTAL FLUID (Gr 27 deg)
 IHP 2180
 IFP 35 - 38
 ISIP 1160
 FFP 38 - 42
 FSIP 1192
 FHP 2100 BHT 112 deg F

Vis 57 Wt 9.2 Fil 8.0 PH 10.5
 Chl 5,000 LCM 2#
 9/15/14 @ 4490

DST #2 4484 - 4535
 (Marmaton B & C)
 30 30 30 30
 BLOW:
 IF Surface blow died 10 min
 FF No blow
 RECOVERY:
 15' M w/ oil spots
 IHP 2216
 IFP 28 - 27
 ISIP 1161
 FFP 25 - 27
 FSIP 1094
 IHP 2181 BHT 109 deg F

Vis 55 Wt 9.3 Fil 9.6 PH 11.5
 Chl 6,000 LCM 2#
 9/16/14 @ 4535

JOHNSON
-<< 4653(-1513)

4650

Shale, black, gray, gn & mar

LS, tan-gray, vf-micxln, sub ool-foss, rr P pp por, spt'd stn, NSFO, N fluor, N odor + Cht, brn, trnsl-opq

LS, tan-lt gray, vf-micxln, sub ool, NV por, dense + Cht, tan-gray, trnsl

LS, tan-lt gray-crm, v-micxln, sub ool-foss, chky-dense, NV por + Cht, gray-tan, sltly foss, trnsl

LS, brn-gray, vf-micxln, NV por, dense + Cht, dk brn-gray, trnsl

LS, tan-gray, vf-mxln, sltly foss, P ixln por & P vgy-pp por, SSFO, spt'd-unf lt stn, dull fluor, fnt odor

LS, brn-gray, vf-fxln, foss(bry), F vgy por & F ixln por, GSFO w/gas bubb (bleeding), unf-spt'd dark stn, dull fluor, G odor

LS, tan-lt gray, fxln, chky IP, sltly foss, NV por, hd

LS, tan-crm, fxln, chky IP, foss & ool, rr P vgy por, NS, hd + Shale, gray, black, gn & mar

Most Shale, black, gray, gn, mar, red, yel + pyr w/ few clus SS, white, vfgrn, rd, well sort, comp, P ig por, NS

Shale vcol + few clus SS, white-gray, sltly glauc, vfgrn, rd, well sort, comp-fri, F-P ig por, NS

SS, white-clr qtz, sltly glauc, f-vfgrn, rd, mod sort, comp-fri, F-P ig por, rr spt'd gils stn, NSFO, N fluor, N odor + Shale, vcol

Shale, gn, gray(sdy), black, mar & yel + pyr

Shale, mar, gray, black, gn + pyr & SS, white-gray, sltly glauc, some w/ black shale incl, rd, mod sort, comp-fri, F-P ig por, NS

LS, tan-lt gray, vfxln, sdy, vfgrn, NV por, hd

LS, white-gray, fxln, vfgrn, chky IP, NV por, hd

LS, gray-white, fxln, chky IP, sdy & ool, vf-fgrn, NV por, hd

LS, white-crm, fxln, chky IP, ool, f-mgrn, NV por, hd

LS AA + LS, white-tan, vf-micxln, sub ool, NV por, dense

LS, crm-gray, fxln, chky IP, sub ool, NV por, dense

LS AA + LS, tan-gray, micxln, chky IP, NV por

DST#3 4662 - 4720

(Johnson Zone)

30 30 60 90

BLOW:

IF Surface blow built to 2"

FF Surface blow built to 2 1/2"

RECOVERY:

45' G&OCM (1%g 30%o 69%m)

IHP 2307

IFP 32 - 28

ISIP 144

FFP 36 - 33

FSIP 963

FHP 2181 BHT 118 deg F

Vis 67 Wt 9.3 Fil 10.4 PH 10

Chl 7,700 LCM 2#

9/17/14 @ 4718

Vis 49 Wt 9.2 Fil 7.4 PH 11

Chl 4,500 LCM 2#

9/18/14 @ 4850

conn

conn

conn

conn

conn

conn

conn

< CFS

< CFS

ROP (min/ft)

MISSISSIPPI

-<< 4808(-1668)

4850

4800

4750

4700

4650

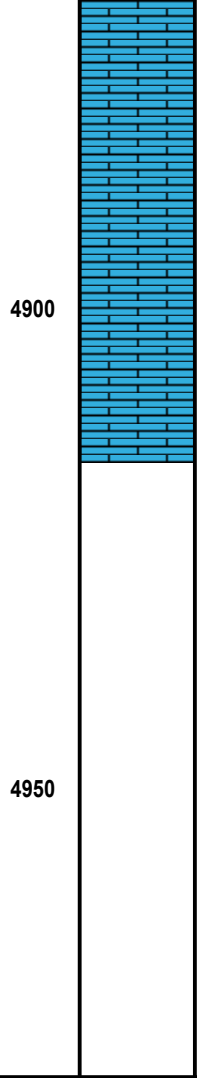
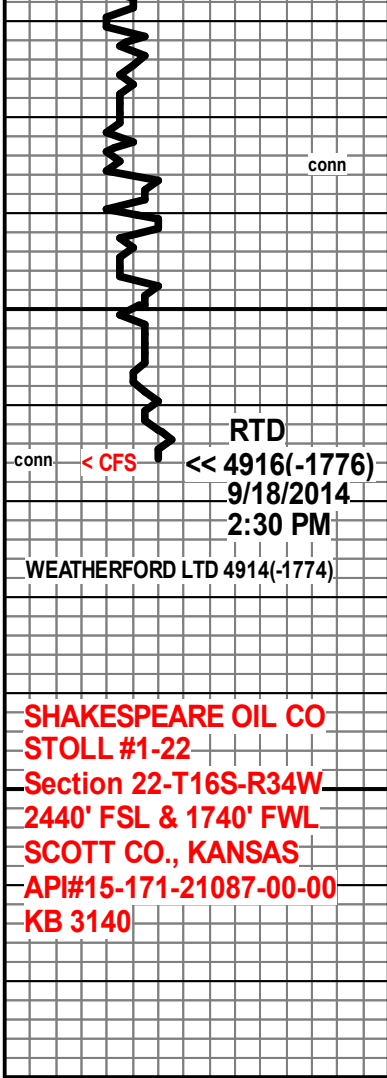
D
S
T

3

0

ROP (min/ft)

15



LS AA + LS, tan-gray, micxln, chky IP, NV por, dense

LS AA + LS, crm-gray, vf-fxln, sub ool-foss, NV por, dense

LS, crm-gray, vf-fxln, chky IP, sub ool-foss, NV por, dense

LS, brn-gray, micxln, NV por, mhd

Survey @ 4916, 2 1/2 deg