

Operator H&C Oil Operating, Inc.	KB Elevation DF 2531 GL 2524
Lease Keith-Ficken No. 17-3	

API # 15-065-24015-0000	Casing Record Surface
Field Hurlbut West	8 5/8" @ 221'
Location 500' FSL & 850' FWL	5 1/2" 4135'
Sec. 17 Twp. 9s Rge. 24w	Electrical Surveys
County Graham State Kansas	CNL/CDL, DIL, MEL

Formation	Sample tops	Log Tops	Datum	Struct Comp
Top Anhydrite	2192	2193	+338	-3
Base Anhydrite	2227	2228	+303	-3
Topeka	3609	3610	-1079	-2
Heebner	3824	3825	-1294	-1
Toronto	3849	3849	-1318	-1
LKC	3863	3864	-1333	-1
BKC	4089	4088	-1557	-3
Total Depth	4135	4137	-1606	

Reference Well For Structural Comparison: **H&C Oil Operating, Inc.**
Keith-Ficken #17-1 1300' FSL & 800' FWL Sec. 17-9s-24w

Drilling Contractor American Eagle, Rig #2	Completed 3-11-14
Commenced 3-4-14	
Samples Saved From 3800	To RTD
Drilling Time Kept From 3500	To RTD
Samples Examined From 3800	To RTD
Geological Supervision From 3500	To RTD

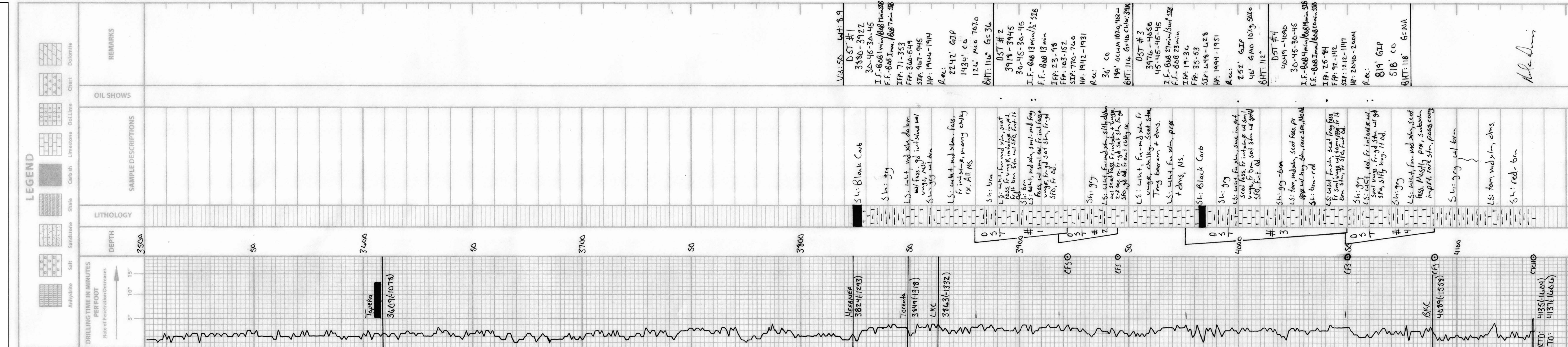
Summary and Recommendations

Due to structural position, DST recovery, and log evaluation, it was decided to set 5 1/2" production casing for completion.

Perforate:
 LKC K: 4059-4063
 LKC J: 4041-4049
 LKC I: 4023-4025
 LKC H: 4000-4002
 LKC D: 3906-3908
 LKC C: 3894-3896
 LKC F: 3944-3947 (Before Abandonment)

Respectfully Submitted,

 Marc A. Downing



M.A. Downing