

| | | | |
|--|-----------------|------------------------------|--------------------|
| Marc A. Downing | | Geologic Report | |
| Consulting Petroleum Geologist | | Drilling Time and Sample Log | |
| Operator H&C Oil Operating, Inc. | | KB Elevation 2579 | DF 2572 |
| Lease Delbert Walt No. 13-4 | | GL 2572 | |
| API # 15-179-21363-0000 | | Casing Record Surface | |
| Field Gurk | | 8 5/8" @ 265' | |
| Location 2310' FSL & 1650' FEL | | Production 5 1/2" @ 4100' | |
| Sec. 13 | Twp. 10s | Rge. 26w | Electrical Surveys |
| County Sheridan State Kansas | | | CNL/CDL, DIL, MEL |
| Formation | Sample tops | Log Tops | Datum |
| Top Anhydrite | 2200 | 2203 | +376 |
| Base Anhydrite | 2231 | 2237 | +342 |
| | | | |
| Topoka | 3577 | 3580 | -1001 |
| Heebner | 3786 | 3794 | -1215 |
| Toronto | 3808 | 3816 | -1237 |
| LKC | 3826 | 3834 | -1255 |
| BKC | 4058 | 4064 | -1485 |
| | | | |
| Total Depth | 4105 | 4113 | -1534 |
| | | | |
| Reference Well For Structural Comparison H&C Oil Operating, Inc. Bakel #30-1 1650' FNL & 330' FWL Sec. 30-9s-24w | | | |

| | | |
|-----------------------------|-------------------------------|-------------------------|
| Drilling Contractor | American Eagle, Rig #2 | |
| Commenced | 8-27-14 | Completed 9-4-14 |
| Samples Saved From | 3750 | To RTD |
| Drilling Time Kept From | 3450 | To RTD |
| Samples Examined From | 3750 | To RTD |
| Geological Supervision From | 3450 | To RTD |

Summary and Recommendations

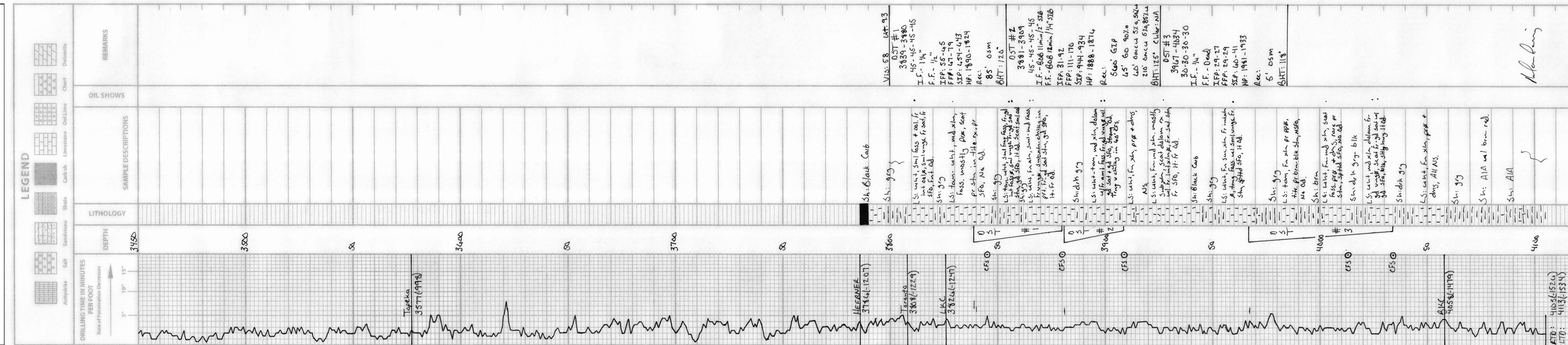
Due to structural position, DST recovery, and log evaluation, it was decided to set 5 1/2" production casing for completion.

Perforations:

LKC F: 3913-18
 E: 3904-08
 D: 3871-74
 C: 3862-64
 A: 3834-38 (Before Abandonment)

Respectfully Submitted,

Marc A. Downing



M. Downing

ATO: 4105 (1526)
 LTO: 4113 (1534)