

Marc A. Downing		Geologic Report	
Consulting Petroleum Geologist		Drilling Time and Sample Log	
Operator H&C Oil Operating, Inc.		KB Elevation 2394	DF 2394
Lease Paxson-Rice Unit		GL 2387	
API # 15-065-24062-0000		Casing Record Surface	
Field Wildcat		8 5/8" @ 262'	
Location 1220' FSL & 2640' FWL		5 1/2" @ 3935'	
Sec. 26	Twp. 7s	Rge. 24w	Electrical Surveys
County Graham	State Kansas		CNL/CDL, DIL, MEL
Formation	Sample tops	Log Tops	Datum
Top Anhydrite	2088	2090	+304
Base Anhydrite	2123	2123	+271
Topoka	3430	3430	-1036
Heebner	3634	3636	-1242
Toronto	3657	3660	-1266
LKC	3672	3675	-1281
BKC	3877	3878	-1484
Total Depth	3936	3935	-1541
Reference Well For Structural Comparison	Peel-Hardman Oil Producers		
Scheitzer #1	SE SE NW Sec. 26-7s-24w		

Drilling Contractor	American Eagle, Rig #2		
Commenced	9-15-14	Completed	9-22-14
Samples Saved From	3550	To	RTD
Drilling Time Kept From	3300	To	RTD
Samples Examined From	3550	To	RTD
Geological Supervision From	3300	To	RTD

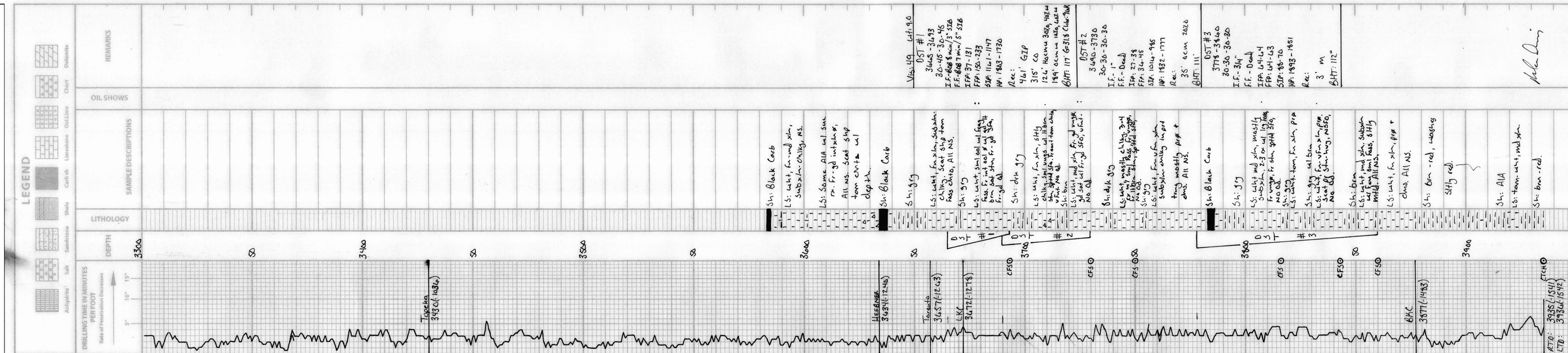
Summary and Recommendations

Due to structural position, DST recovery, and log evaluation, it was decided to set 5 1/2" production casing for completion.

Perforate:
 LKC A: 3677-3682
 LKC C: 3710-3714 (Before Abandonment)

Respectfully Submitted,

 Marc A. Downing



M.A. Downing