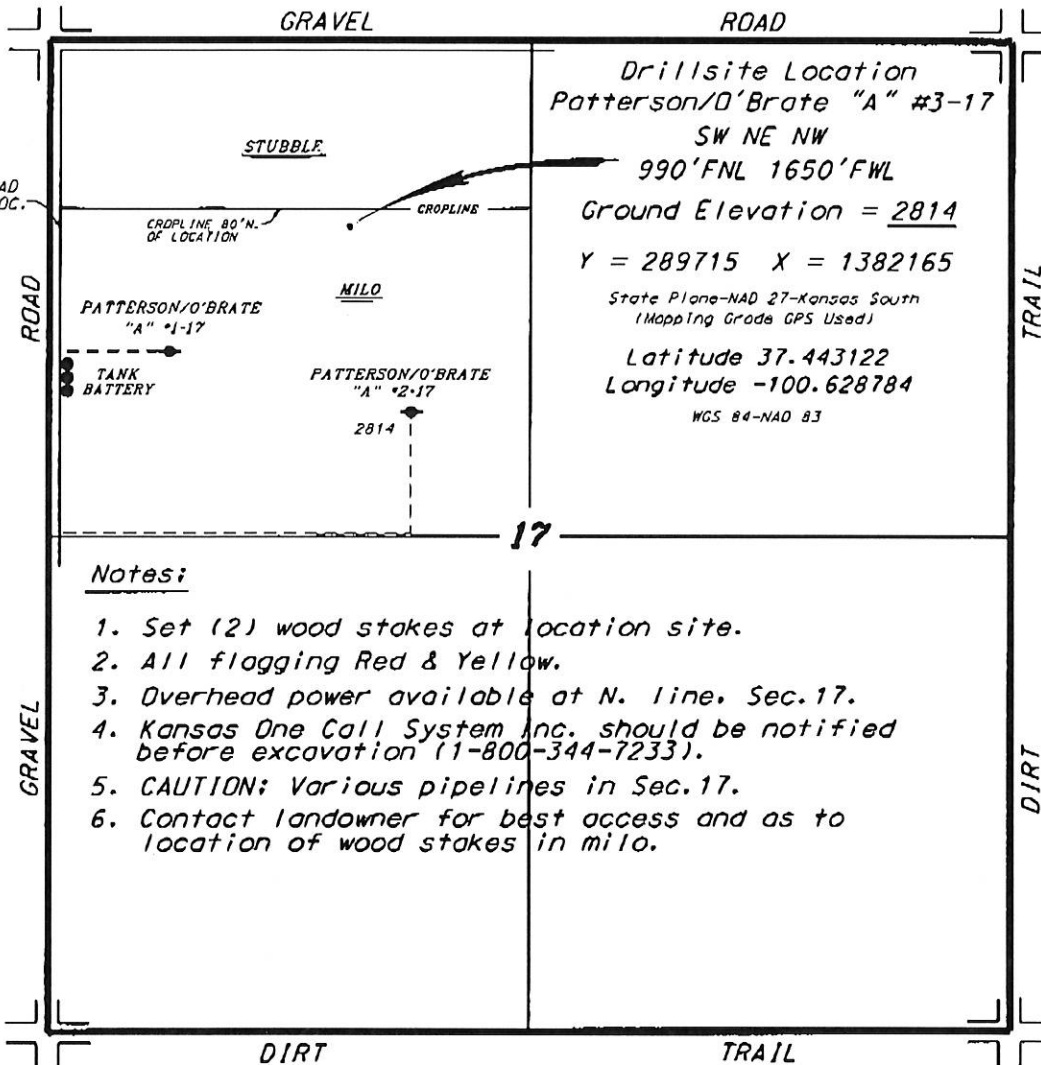


**MCCOY PETROLEUM CORPORATION  
PATTERSON/O'BRATE LEASE  
NW.1/4, SECTION 17, T30S, R30W  
MEADE COUNTY, KANSAS**

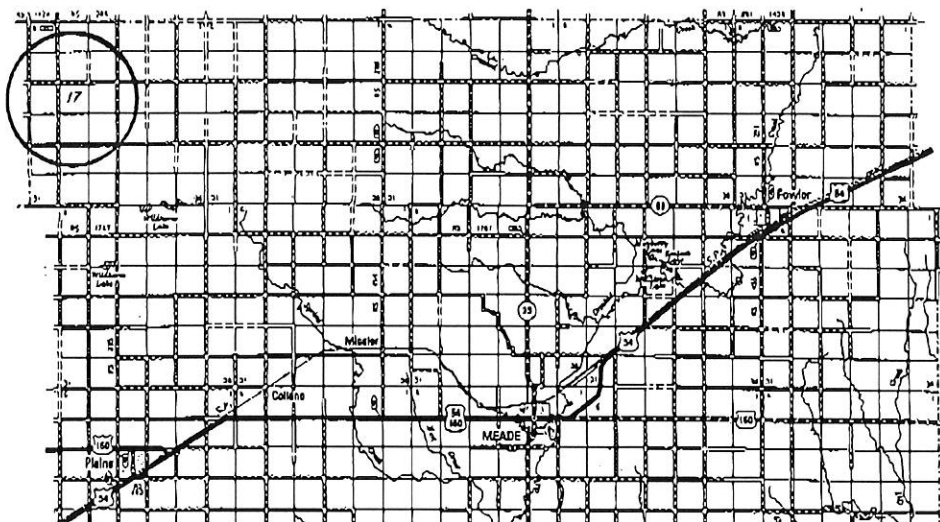


Drillsite Location  
Patterson/O'Brate "A" #3-17  
SW NE NW  
990'FNL 1650'FWL  
Ground Elevation = 2814  
Y = 289715 X = 1382165  
State Plane-NAD 27-Kansas South  
(Mapping Grade GPS Used)  
Latitude 37.443122  
Longitude -100.628784  
WGS 84-NAD 83

**Notes:**

1. Set (2) wood stakes at location site.
2. All flagging Red & Yellow.
3. Overhead power available at N. line, Sec.17.
4. Kansas One Call System Inc. should be notified before excavation (1-800-344-7233).
5. CAUTION: Various pipelines in Sec.17.
6. Contact landowner for best access and as to location of wood stakes in milo.

\*Ingress and egress to location as shown on this plot is per usage only and may not be legally opened for public use. Contact landowner, tenant and county road department for access.



• Controlling data is based upon the best maps and photographs available to us and upon a regular section of land containing 640 acres.  
• Approximate section lines were determined using the normal standard of care of oilfield surveyors practicing in the state of Kansas. The section corners, which establish the precise section lines, were not necessarily located, and the exact location of the drillsite location in the section is not guaranteed. Therefore, the operator accepting this service and occupying this plot and all other parties relying thereon agree to hold Central Kansas Oilfield Services, Inc., its officers and employees harmless from all losses, costs and expenses and hold entities released from any liability from incidents or consequential damages.  
• Elevations derived from National Geodetic Vertical Datum.

Date October 2, 2014