



DRILL STEM TEST REPORT

Prepared For: **Bengalia Land and Cattle Company**

PO Box 521008
Tulsa, Oklahoma
74152+1008

ATTN:

Myles McGehee #1-7

7/25S/30W/Gray

Start Date: 2014.05.31 @ 11:30:00

End Date: 2014.05.31 @ 23:22:30

Job Ticket #: 18266 DST #: 1

Superior Testers Enterprises LLC
PO Box 138 Great Bend KS 67530
1-800-792-6902

Printed: 2014.05.31 @ 23:50:41



DRILL STEM TEST REPORT

Bengalia Land and Cattle Company

7/25S/30W/Gray

PO Box 521008
Tulsa, Oklahoma
74152+1008
ATTN:

Myles McGehee #1-7

Job Ticket: 18266 **DST#: 1**

Test Start: 2014.05.31 @ 11:30:00

GENERAL INFORMATION:

Formation: **Lansing/Kansas City**

Deviated: No Whipstock: ft (KB)

Time Tool Opened: 13:45:00

Time Test Ended: 23:22:30

Test Type: Conventional Bottom Hole (Initial)

Tester: Ken Swinney

Unit No: 3325 Scott City/110

Interval: 4408.00 ft (KB) To 4435.00 ft (KB) (TVD)

Reference Elevations: 2837.00 ft (KB)

Total Depth: 4435.00 ft (KB) (TVD)

2827.00 ft (CF)

Hole Diameter: 7.80 inches Hole Condition: Fair

KB to GR/CF: 10.00 ft

Serial #: 6749

Inside

Press@RunDepth: 838.21 psig @ 4431.00 ft (KB)

Capacity: 5000.00 psig

Start Date: 2014.05.31

End Date:

2014.05.31

Last Calib.:

2014.05.31

Start Time: 11:30:00

End Time:

23:22:30

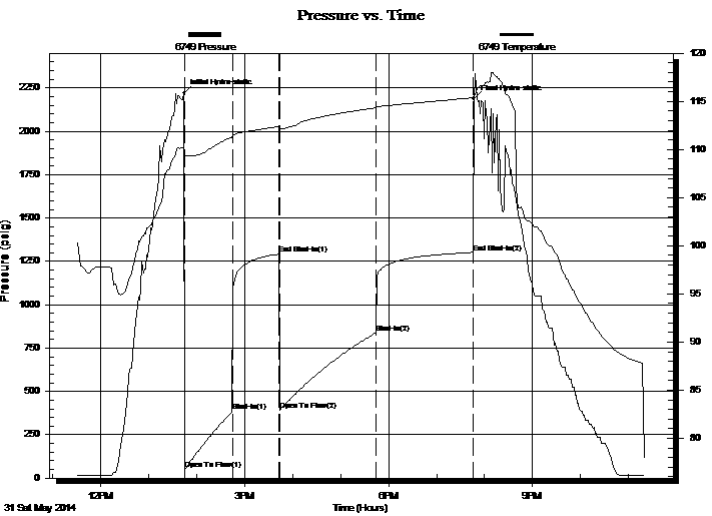
Time On Btm:

2014.05.31 @ 13:44:00

Time Off Btm:

2014.05.31 @ 19:46:30

TEST COMMENT: 1ST Open 60 Minutes/Good blow /Blow built to bottom of bucket in 9 minutes 30 seconds
 1ST Shut In 60 Minutes/No blow back
 2ND Open 120 Minutes/Good blow /Blow built to bottom of bucket in 11 minutes/Weak gas to surface 60 min
 2ND Shut In 120 Minutes/No blow back



PRESSURE SUMMARY

Time (Min.)	Pressure (psig)	Temp (deg F)	Annotation
0	2220.44	110.04	Initial Hydro-static
1	53.41	109.42	Open To Flow (1)
61	384.18	111.28	Shut-In(1)
119	1292.77	112.41	End Shut-In(1)
120	389.82	112.22	Open To Flow (2)
240	838.21	114.33	Shut-In(2)
362	1302.08	115.38	End Shut-In(2)
363	2185.92	115.58	Final Hydro-static

Recovery

Length (ft)	Description	Volume (bbl)
1736.00	Gas cut Muddy Water w/oil scum in tool	24.35
0.00	Gas 5% Mud 15% Water 80%	0.00
0.00	Recov. Chlorides 48,000 ppm	0.00
0.00	Recov. Resist. .20 ohms @ 76 deg	0.00

Gas Rates

	Choke (inches)	Pressure (psig)	Gas Rate (Mcf/d)



DRILL STEM TEST REPORT

Bengalia Land and Cattle Company

7/25S/30W/Gray

PO Box 521008
Tulsa, Oklahoma
74152+1008
ATTN:

Myles McGehee #1-7

Job Ticket: 18266

DST#: 1

Test Start: 2014.05.31 @ 11:30:00

GENERAL INFORMATION:

Formation: **Lansing/Kansas City**

Deviated: No Whipstock: ft (KB)

Time Tool Opened: 13:45:00

Time Test Ended: 23:22:30

Test Type: Conventional Bottom Hole (Initial)

Tester: Ken Swinney

Unit No: 3325 Scott City/110

Interval: 4408.00 ft (KB) To 4435.00 ft (KB) (TVD)

Reference Elevations: 2837.00 ft (KB)

Total Depth: 4435.00 ft (KB) (TVD)

2827.00 ft (CF)

Hole Diameter: 7.80 inches Hole Condition: Fair

KB to GR/CF: 10.00 ft

Serial #: 8938

Outside

Press@RunDepth: 1301.41 psig @ 4432.00 ft (KB)

Capacity: 5000.00 psig

Start Date: 2014.05.31

End Date:

2014.05.31

Last Calib.:

2014.05.31

Start Time: 11:30:00

End Time:

23:22:30

Time On Btm:

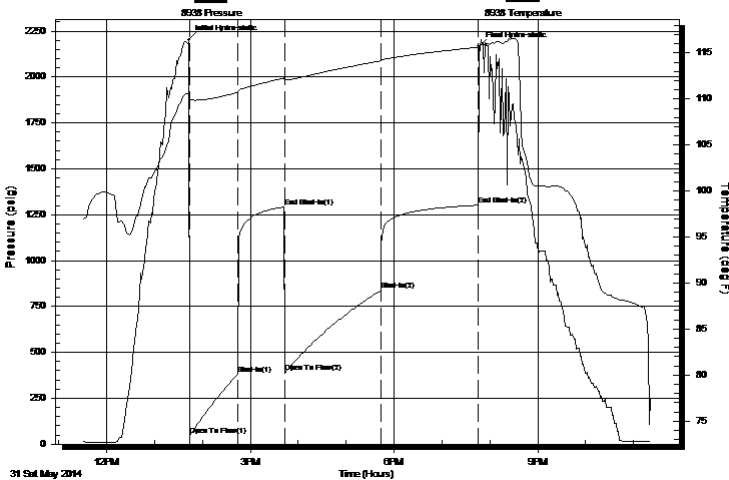
2014.05.31 @ 13:43:00

Time Off Btm:

2014.05.31 @ 19:46:00

TEST COMMENT: 1ST Open 60 Minutes/Good blow /Blow built to bottom of bucket in 9 minutes 30 seconds
 1ST Shut In 60 Minutes/No blow back
 2ND Open 120 Minutes/Good blow /Blow built to bottom of bucket in 11 minutes/Weak gas to surface 60 min
 2ND Shut In 120 Minutes/No blow back

Pressure vs. Time



PRESSURE SUMMARY

Time (Min.)	Pressure (psig)	Temp (deg F)	Annotation
0	2203.20	110.53	Initial Hydro-static
1	49.95	110.00	Open To Flow (1)
61	382.10	110.71	Shut-In(1)
120	1292.16	112.29	End Shut-In(1)
121	389.29	112.08	Open To Flow (2)
241	837.26	114.15	Shut-In(2)
362	1301.41	115.63	End Shut-In(2)
363	2165.82	115.85	Final Hydro-static

Recovery

Length (ft)	Description	Volume (bbl)
1736.00	Gas cut Muddy Water w/oil scum in tool	24.35
0.00	Gas 5% Mud 15% Water 80%	0.00
0.00	Recov. Chlorides 48,000 ppm	0.00
0.00	Recov. Resist. .20 ohms @ 76 deg	0.00

Gas Rates

	Choke (inches)	Pressure (psig)	Gas Rate (Mcf/d)



DRILL STEM TEST REPORT

TOOL DIAGRAM

Bengalia Land and Cattle Company

7/25S/30W/Gray

PO Box 521008
Tulsa, Oklahoma
74152+1008
ATTN:

Myles McGehee #1-7

Job Ticket: 18266

DST#: 1

Test Start: 2014.05.31 @ 11:30:00

Tool Information

Drill Pipe:	Length: 4406.00 ft	Diameter: 3.80 inches	Volume: 61.80 bbl	Tool Weight: 2000.00 lb
Heavy Wt. Pipe:	Length: 0.00 ft	Diameter: 0.00 inches	Volume: 0.00 bbl	Weight set on Packer: 20000.00 lb
Drill Collar:	Length: 0.00 ft	Diameter: 0.00 inches	Volume: 0.00 bbl	Weight to Pull Loose: 110000.0 lb
			Total Volume: 61.80 bbl	Tool Chased 0.00 ft
Drill Pipe Above KB:	25.00 ft			String Weight: Initial 79000.00 lb
Depth to Top Packer:	4408.00 ft			Final 85000.00 lb
Depth to Bottom Packer:	ft			
Interval between Packers:	27.00 ft			
Tool Length:	54.00 ft			
Number of Packers:	2	Diameter: 6.75 inches		

Tool Comments: Shale packer used

Tool Description	Length (ft)	Serial No.	Position	Depth (ft)	Accum. Lengths
Shut-In Tool	5.00			4386.00	
Hydraulic tool	5.00			4391.00	
Jars	5.00			4396.00	
Safety Joint	2.00			4398.00	
Packer	5.00			4403.00	27.00 Bottom Of Top Packer
Packer	5.00			4408.00	
Anchor	22.00			4430.00	
Recorder	1.00	6749	Inside	4431.00	
Recorder	1.00	8938	Outside	4432.00	
Bullnose	3.00			4435.00	27.00 Bottom Packers & Anchor
Total Tool Length:	54.00				



DRILL STEM TEST REPORT

FLUID SUMMARY

Bengalia Land and Cattle Company

7/25S/30W/Gray

PO Box 521008
Tulsa, Oklahoma
74152+1008
ATTN:

Myles McGehee #1-7

Job Ticket: 18266

DST#: 1

Test Start: 2014.05.31 @ 11:30:00

Mud and Cushion Information

Mud Type: Gel Chem
Mud Weight: 9.00 lb/gal
Viscosity: 48.00 sec/qt
Water Loss: 8.00 in³
Resistivity: ohm.m
Salinity: 5000.00 ppm
Filter Cake: 1.00 inches

Cushion Type:
Cushion Length: ft
Cushion Volume: bbl
Gas Cushion Type:
Gas Cushion Pressure: psig

Oil API: deg API
Water Salinity: ppm

Recovery Information

Recovery Table

Length ft	Description	Volume bbl
1736.00	Gas cut Muddy Water w/oil scum in tool	24.352
0.00	Gas 5% Mud 15% Water 80%	0.000
0.00	Recov. Chlorides 48,000 ppm	0.000
0.00	Recov. Resist. .20 ohms @ 76 deg	0.000

Total Length: 1736.00 ft Total Volume: 24.352 bbl

Num Fluid Samples: 0

Num Gas Bombs: 0

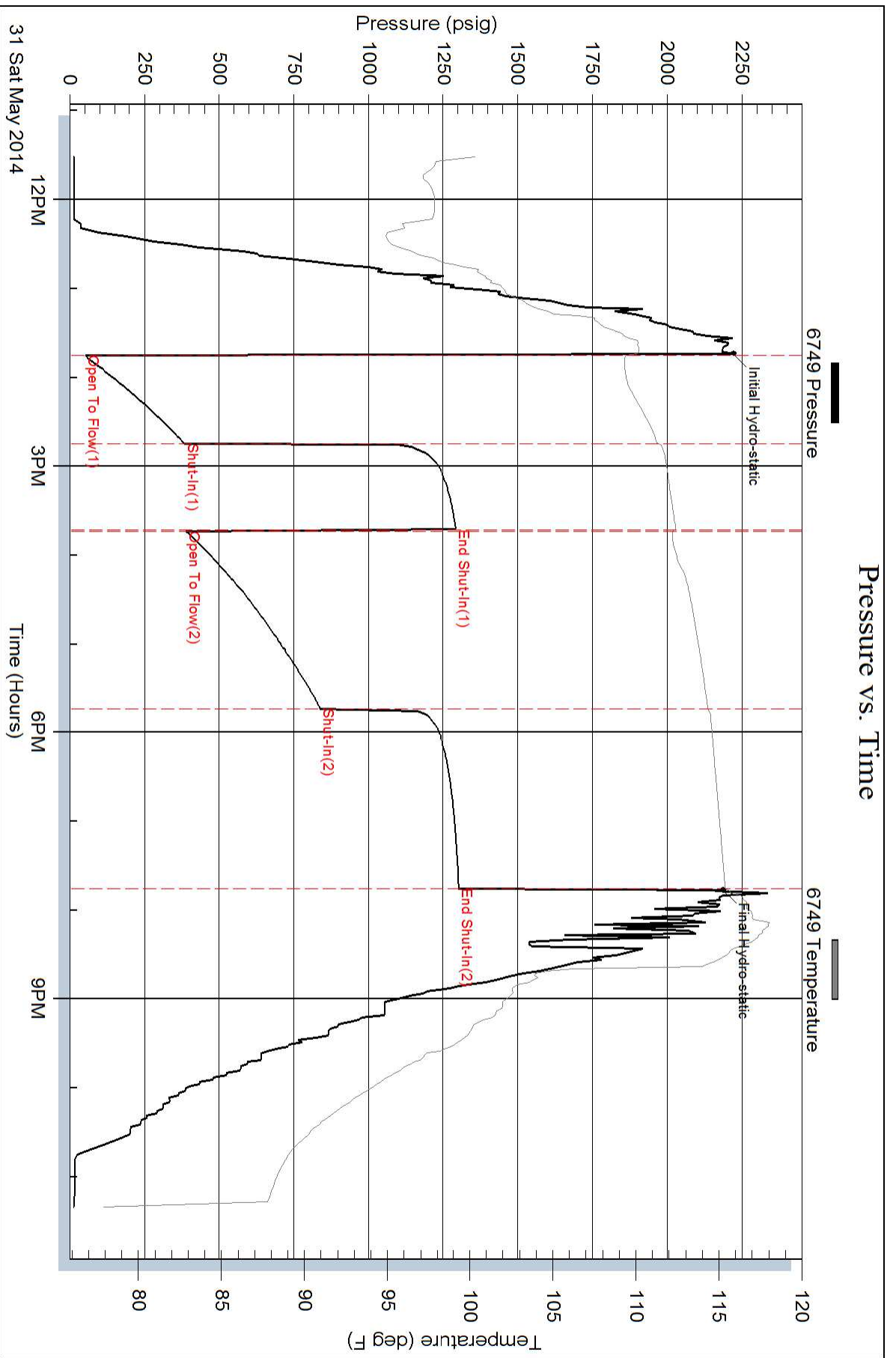
Serial #:

Laboratory Name:

Laboratory Location:

Recovery Comments:

Pressure vs. Time



Pressure vs. Time

