

OIL PRODUCERS, INC. OF KANSAS

Scale 1:240 (5"=100') Imperial
Measured Depth Log

Well Name: Clinton 'D' #5

Location: 1953' FNL & 924' FWL, Sec 05-T12S-R17W, Ellis County, Kansas

License Number: API: 15-051-26662

Region: Bemis-Shutts

Spud Date: 03/20/2014

Drilling Completed: 03/28/2014

Surface Coordinates: Lat: 39.0397583

Long: -99.237956

Bottom Hole Coordinates: Vertical hole

Ground Elevation (ft): 2126'

K.B. Elevation (ft): 2131'

Logged Interval (ft): 3300' To: RTD

Total Depth (ft): 3690'

Formation: Arbuckle at RTD

Type of Drilling Fluid: Chemical

Printed by MUD.LOG from WellSight Systems 1-800-447-1534 www.WellSight.com

OPERATOR

Company: OIL PRODUCERS, INC. OF KANSAS

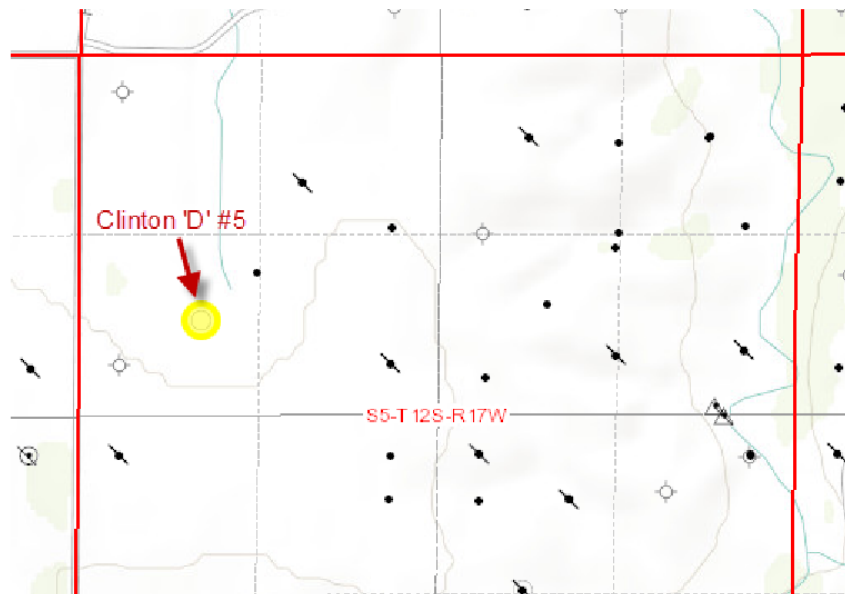
Address: 1710 N. Waterfront Parkway
Wichita, KS 67206-6603
316-681-0231

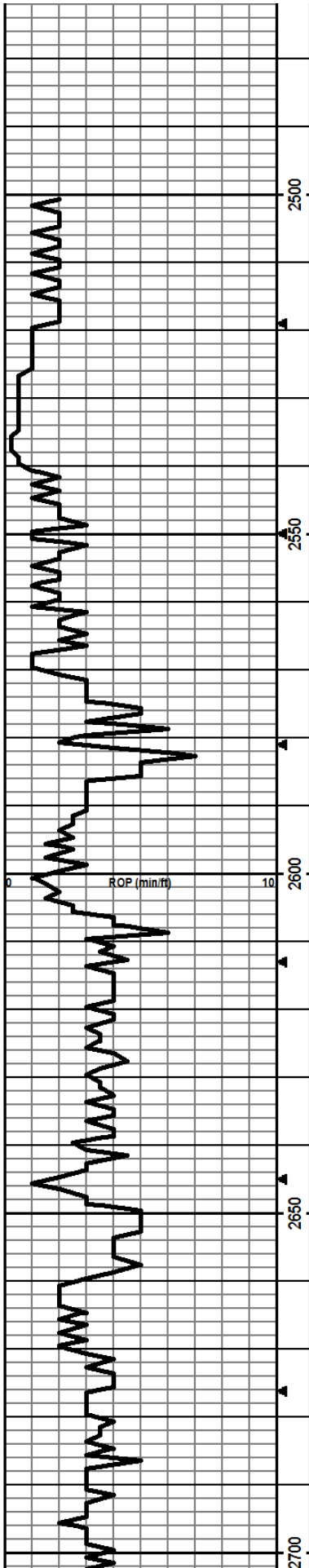
GEOLOGIST

Name: Kent R. Matson

Company: Matson Geological Services, LLC

Address: 33300 W. 15th Street S.
Garden Plain, Kansas 67050
316-644-1975





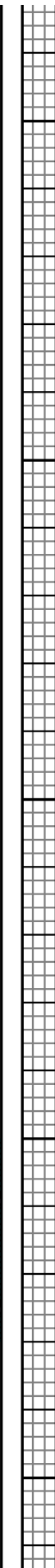
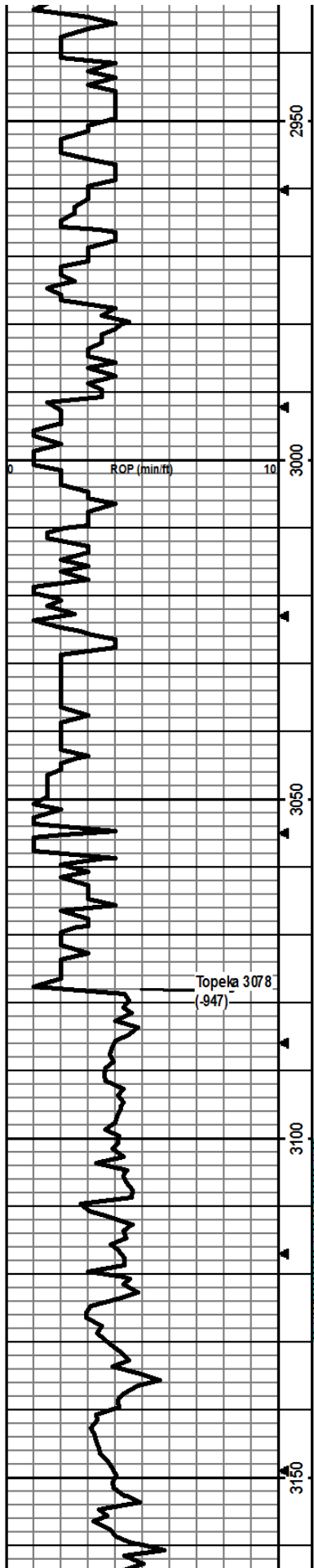
03/26, DST #1 @ 3430'
 03/27, DST #3 @ 3470'
 03/28, CFS @ 3640'
 03/28, TD @ 3690'.

Anhydrite: Top @ 1351', Botton @ 1385'

ROP Data begins @ 2500' on 03/23/2014

Mudco Check #3 @ 1507'
 03/22/14 10:33am
 wt vis pH chl
 8.9 28 6.0 20000
 Flt LCM
 n/c nil

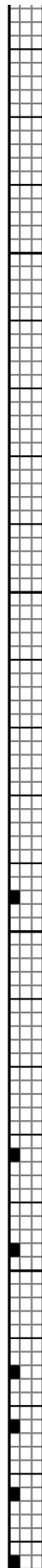
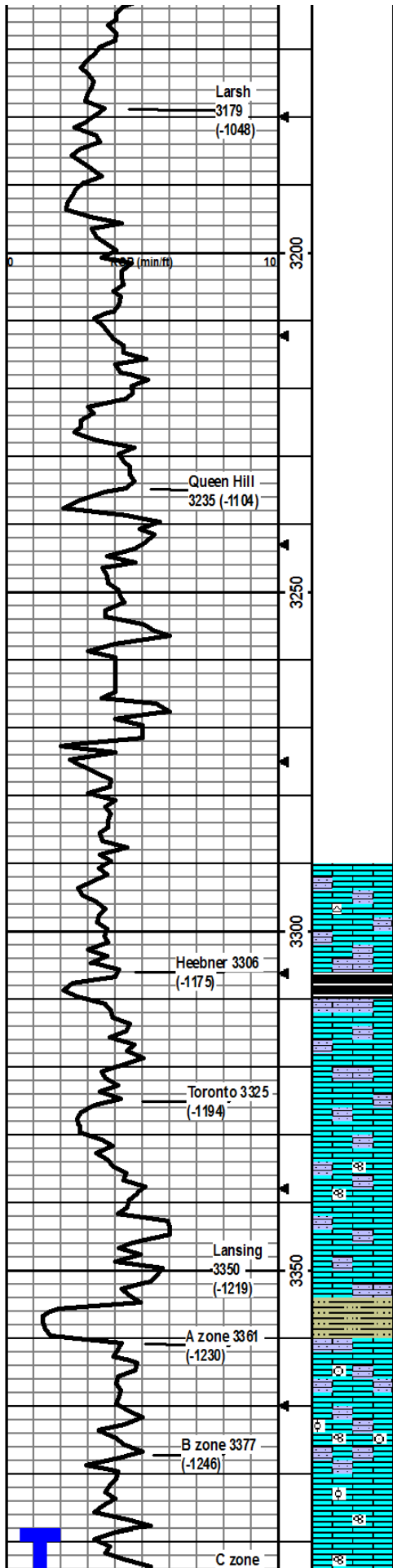
Mudco Check #4 @ 2341'
 03/23/14 10:00am
 wt vis pH chl
 9.8 28 6.0 69000
 Flt LCM
 n/c nil



LS: crm/lt brn/lt gry, micro-med xtal, foss frags/fusln/crin, some vry silty, some chalky, min frac por, no odor, ns.

LS: lt brn/gry, micro-med xtal, foss frags/fusln/crin, some vry silty, some gry silty SH, min frac por, no odor, ns.

LS: lt brn/lt-dk gry, micro-med xtal, foss frags, some vry silty, some chalky, min lt brn chert, some gry silty SH, min frac por, no odor, ns.



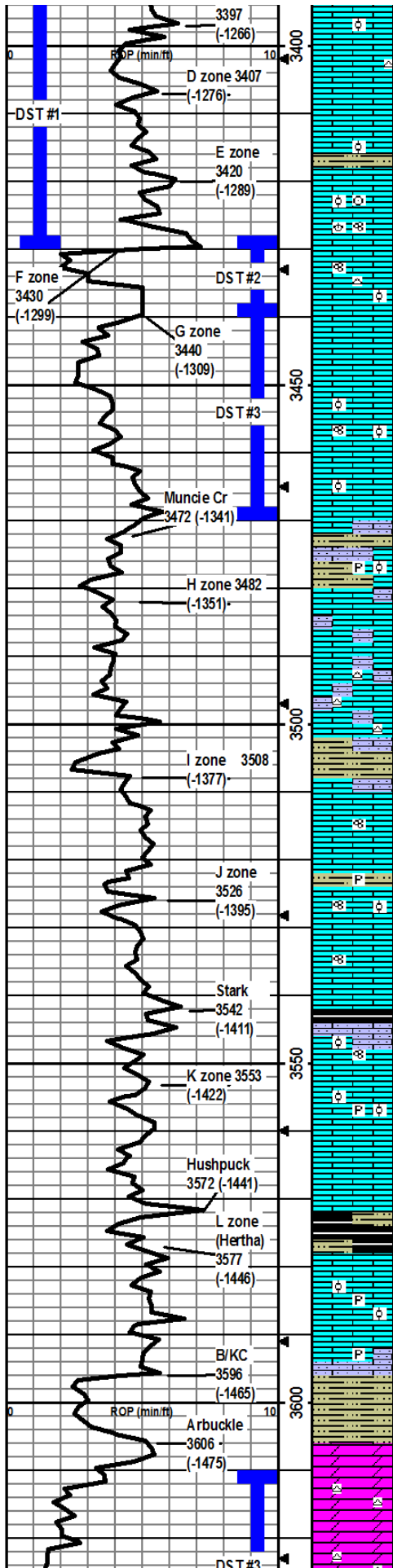
Drill cutting samples at 10' intervals start at 3300-3310'.

- LS: crm/lt brn, micro-med xtal, foss frags, some silty, some lt brn chert, some chalky, 2 pcs w/ppt-vry fn in-xtal por, slit crush odor, dul yel flor/cut, ssfo.
- LS: lt brn-brn, micro-med xtal, foss frags, some silty, m in frac por, no odor, ns.
- SH: dk gry, silty, carb, firm, fissile.
- LS: crm/lt brn, micro-med xtal, foss frags, some silty, some chalky, m in frac por, no odor, ns.
- LS: crm/lt brn, micro-fn xtal, min foss frags, some silty, some chalky, m in frac por, no odor, ns.
- LS: crm/lt brn, micro-med xtal, m in foss frags/fusln, some silty, some chalky, min wht chert, 4 pcs w/ppt-fn in-xtal por w/sfo, dul yel flor/cut, crush odor, ssfo.
- LS: crm/lt brn/lt gry, micro-fn xtal, m in foss frags, some silty, some chalky, 1 pcs w/ppt-fn in-xtal por w/sfo, dul yel flor/cut, slit crush odor, ssfo.
- SH: gry/brn, some vry silty, some carb, soft firm, fissile
- LS: crm/lt brn/gry, micro-fn xtal, min foss frags/crin, some silty, some chalky, 5 pcs w/ppt-fn in-xtal por w/sfo, dul yel flor/cut, sfo.
- LS: crm/lt gry, micro-fn xtal, m in foss frags/crin/fusln/gry ool pcs, some silty, 3 pcs w/ppt-fn in-xtal por w/sfo, dul yel flor/cut, sfo.
- LS: crm/lt brn/lt gry, micro-med xtal, foss frags/ool/fusln, 5 pcs w/ppt-fn in-xtal por w/sfo, yel flor/cut, slit cup odor, sfo.
- LS: crm/lt brn/lt gry, micro-med xtal, foss frags/fusln/few ool, 3 pcs

Mudco Check #6 @ 3287'
 03/25/14 09:30am
 wt vis pH chl
 9.2 55 11.0 3100
 Flit LCM
 7.2 2

Mudco Check #7 @ 3430'
 03/26/14 11:50am
 wt vis pH chl
 9.4 56 10.0 3900
 Flit LCM
 7.8 3

**DST1) 3388-3430
 C, D & E Zones**
 30/45/45/90
 1st) weak surface blow built to BOB in 23 min, no BB.
 2nd) weak surface blow built to 11.5" in 45 min, no BB.



w/ppt-fn in-xtal por, yel flor/cut, slt cup odor, sfo.

LS: crm/lt brn, micro-med xtal, m in foss frags, 14 pcs w/ppt-fn in-xtal por w/sfo, yel flor/cut, cup odor, sfo.

LS: crm/lt brn/lt gry, m micro-med xtal, foss frags/ool, 10 pcs w/ppt-fn in-xtal por w/sfo, yel flor/cut, cup odor, sfo.
SH: gry, silty, carb, soft.

LS: crm/lt brn/lt gry, micro-med xtal, foss frags/ool/fus/n/ool, 9 pcs in 30 min and 10 pcs in 60 min smpls w/ppt-fn in-xtal por w/sfo, yel flor/cut, cup odor, sfo.

LS: crm/lt brn/gry, micro-med xtal, foss frags/fus/n/ool, some wht chert, 12 pcs in 30 min and 15 pcs in 60 min smpls w/ppt-fn in-xtal por w/sfo, dul flor/cut, gd cup odor, sfo.

LS: crm/lt brn/lt gry, micro-med xtal, foss frags, 48 pcs w/ppt-med w/some crs in-xtal por w/sfo, yel flor/cut, gd cup odor, sfo.

LS: crm, micro-med xtal, foss frags/fus/n/ool, some chalky, 40 pcs w/ppt-med in-xtal/in-ool por w/sfo, yel flor/cut, gd cup odor, sfo.

LS: crm/lt gry, micro-med xtal w/2n dry xtal, min foss frag s/min ool, some chalky, 12 pcs in 30 min and 13 pcs in 60 min smpls w/ppt-med in-xtal/ool-castic por, yel flor/cut, gd cup odor, sfo.
SH: gry/brn, vry silty, carb, soft, fissile.
LS: crm/lt-med brn/lt-med gry, micro-med xtal w/some 2n dry xtal, some silty, min pyritic, foss frags w/some dense ool, some frac por, no odor, ns.

LS: crm/lt gry, micro-fn xtal, m in foss frags, some silty, some easily crushed, some frac por, no odor, ns.

LS: crm/lt brn/lt gry, micro-fn xtal w/some 2ndry xtal, some vry silty, crm/lt brn chert, some frac por, no odor, ns.

SH: med-dk gry/green gry, some vry silty, carb, soft-firm, fissile.

LS: crm/lt brn/lt gry, micro-fn xtal, some chalky, foss frags/fus/n, 16 pcs w/ppt-vf in-xtal por w/sfo, yel flor/cut, cup odor, sfo.
SH: gry, silty, carb, soft, pyritic, fissile.
LS: crm/lt brn, micro-med xtal, some chalky, foss frags/some fus/n/ool, 14 pcs w/ppt-vf in-xtal por w/sfo, yel flor/cut, slt cup odor, sfo.

LS: crm/lt brn, micro-med xtal, m in foss frags/fus/n, 5 pcs in 30 min and 5 pcs in 60 min smpls w/ppt-vf in-xtal por w/sfo, yel flor/cut, crush odor, sfo.
SH: med-dk gry/blk, silty, carb, firm, fissile
LS: crm/lt brn, micro-med xtal, some silty/sndy, foss frags/fus/n/dense ool, some frac por, no odor, ns.

LS: crm/lt brn/lt gry, micro-med xtal, foss frags/ool, some pyritic, 10 pcs w/ppt-med in-xtal/ool por w/sfo, yel flor/cut, cup odor, sfo.

LS: crm/lt brn, micro-fn xtal, no vis foss, some chalky, m in frac por, no odor, ns.
SH: med-dk gry/blk, some vry silty, carb, firm, fissile.

LS: crm/lt-med brn/lt yel brn, micro-med xtal, foss frags/dense ool, pyritic, some frac por, 1 pcs w/vf-med oo-castic por w/sfo, yel flor, slt crush odor, ssfo.

LS: crm/lt brn/lt gry, micro-med xtal, foss frags silty, pyritic, some frac por, no odor, ns.

SH: lt-med gry/grnsh gry, glau, silty, carb, soft-firm, fissile.

DOLO: crm/lt brn/lt yel brn, micro-med xtal, grainy/sndy, wht/lt gry chert, approx 40-50% of tray w/fn-med w/some crs in-xtal por w/sfo, yel flor/cut, stg cup odor, vgsfo.

IFP 22-138#
ISIP 508#
FFP 141-243#
F SIP 494#
HP 1681-1673#
Recvd: 465' muddy water; 4% mud, 96% water, slight odor.

CF S @ 3430'
30"/60"

CF S @ 3440'
30"/60"

DST2) 3428-3440
F-Zone
30/45/30/60
1st) weak intermittent 1/8" blow, no BB.
2nd) no blow, no BB.
IFP 6-8#
ISIP 35#
F SIP 8-8#
F SIP 21#
HP 1661-1649#
Recvd: 1' drill mud.

CF S @ 3470'
30"/60"

DST3) 3438-3470
G-Zone
30/30/30/30
1st) weak intermittent surface blow that died at 9 min, no BB.
2nd) no blow, no BB.
IFP 6-10#
ISIP 158#
FFP 10-11#
F SIP 86#
HP 1683-1658#
Recvd: 2' VSOSWM; 2% wtr, 98% mud, few specks of oil.

Mudco Check #8 @ 3470'
03/27/14 11:50 am
wt vis pH chl
9.3 59 10.0 6800
Filt LCM
8.0 3

CF S @ 3540'
30"/60"

DST4) 3610-3640
Ar buckle
30/45/60/90
1st) weak surface blow built to BOB in 19 min, no BB.
2nd) weak surface blow built to BOB in 31 min, weak BB late in shut in.
IFP 15-137#
ISIP 601#
FFP 142-257#
F SIP 586#
HP 1803-1767#
Recvd: 85' GIP; 40' SMCWO, 70% O, 22% wtr, 8% mud; 3.78' SMCWO, 55% O, 37% wtr, 8%

