



**COMPLETION  
& PRODUCTION  
SERVICES CO.**

**COMPENSATED  
DENSITY/ NEUTRON  
LOG**

Company MUSTANG ENERGY CORPORATION  
Well EVANS UNIT #1  
Field JIM NORTH  
County GOVE State KANSAS

Company MUSTANG ENERGY CORPORATION  
Well EVANS UNIT #1  
Field JIM NORTH  
County GOVE  
State KANSAS

Location: API #: 15-063-22186-00-00  
1000' FNL & 1250' FEL  
SW - SW - NE - NE  
SEC 25 TWP 14S RGE 29W  
Permanent Datum GROUND LEVEL Elevation 2612  
Log Measured From KELLY BUSHING 8' A.G.L.  
Drilling Measured From KELLY BUSHING  
Other Services  
DIL/MEL  
Elevation  
K.B. 2620  
D.F. 2618  
G.L. 2612

Date	3-24-14		
Run Number	ONE		
Depth Driller	4385		
Depth Logger	4387		
Bottom Logged Interval	4363		
Top Log Interval	3600		
Casing Driller	8 5/8 @ 222'		
Casing Logger	222'		
Bit Size	7.875		
Type Fluid in Hole	STARCH MUD	CHLORIDES 1.750	
Density / Viscosity	9.4 / 50		
pH / Fluid Loss	9.5 / 9.2		
Source of Sample	FLOWLINE		
Rim @ Meas. Temp	0.70 @ 64F		
Rmf @ Meas. Temp	0.53 @ 64F		
Rmc @ Meas. Temp	0.84 @ 64F		
Source of Rmf / Rmc	MEASURED		
Rim @ BHT	0.40 @ 119F		
Time Circulation Stopped	2 HOURS		
Time Logger on Bottom			
Maximum Recorded Temperature	119F		
Equipment Number	860		
Location	HAYS, KS.		
Recorded By	IAN MABB		
Witnessed By	HERB DEINES		

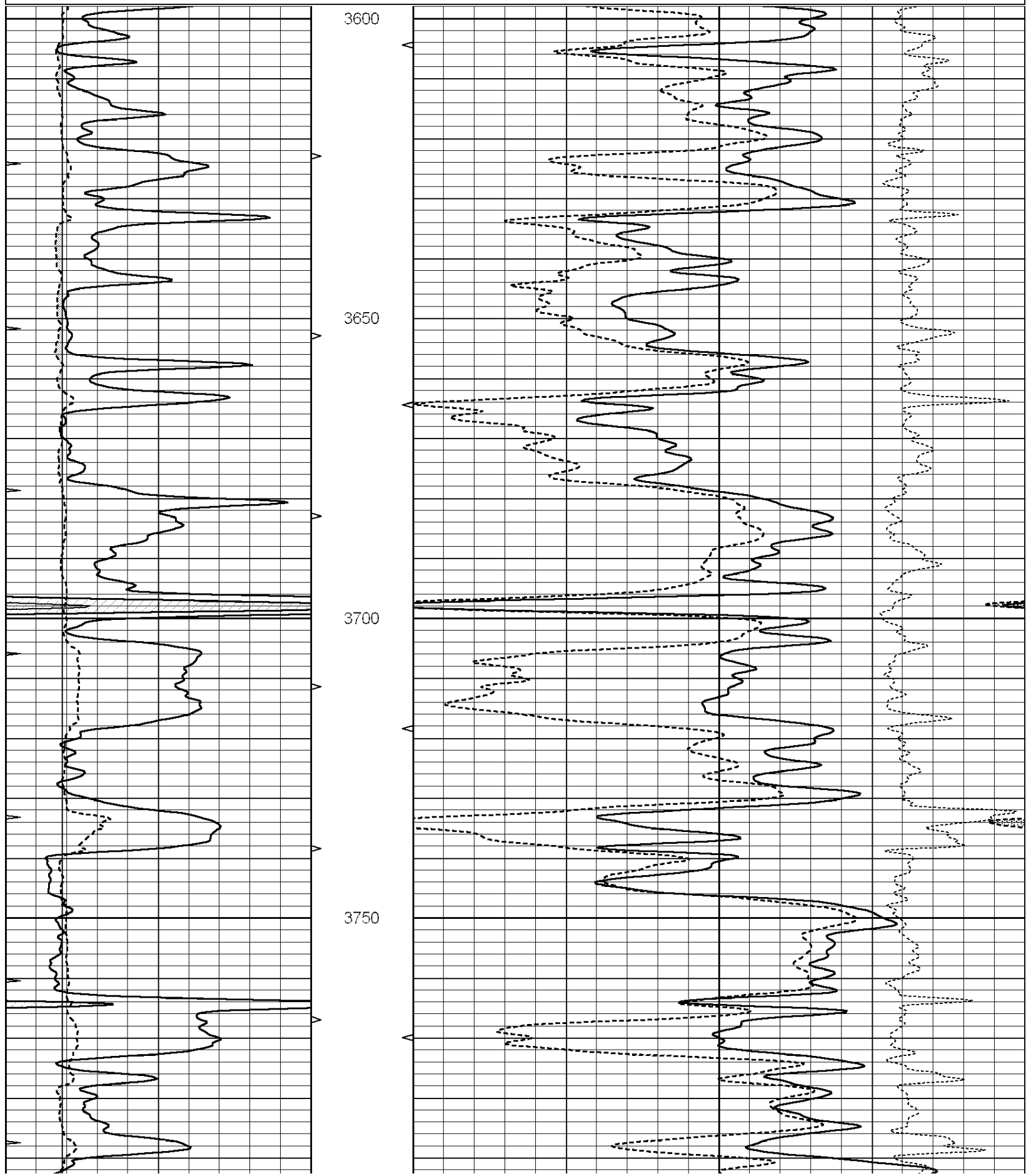
<<< Fold Here >>>

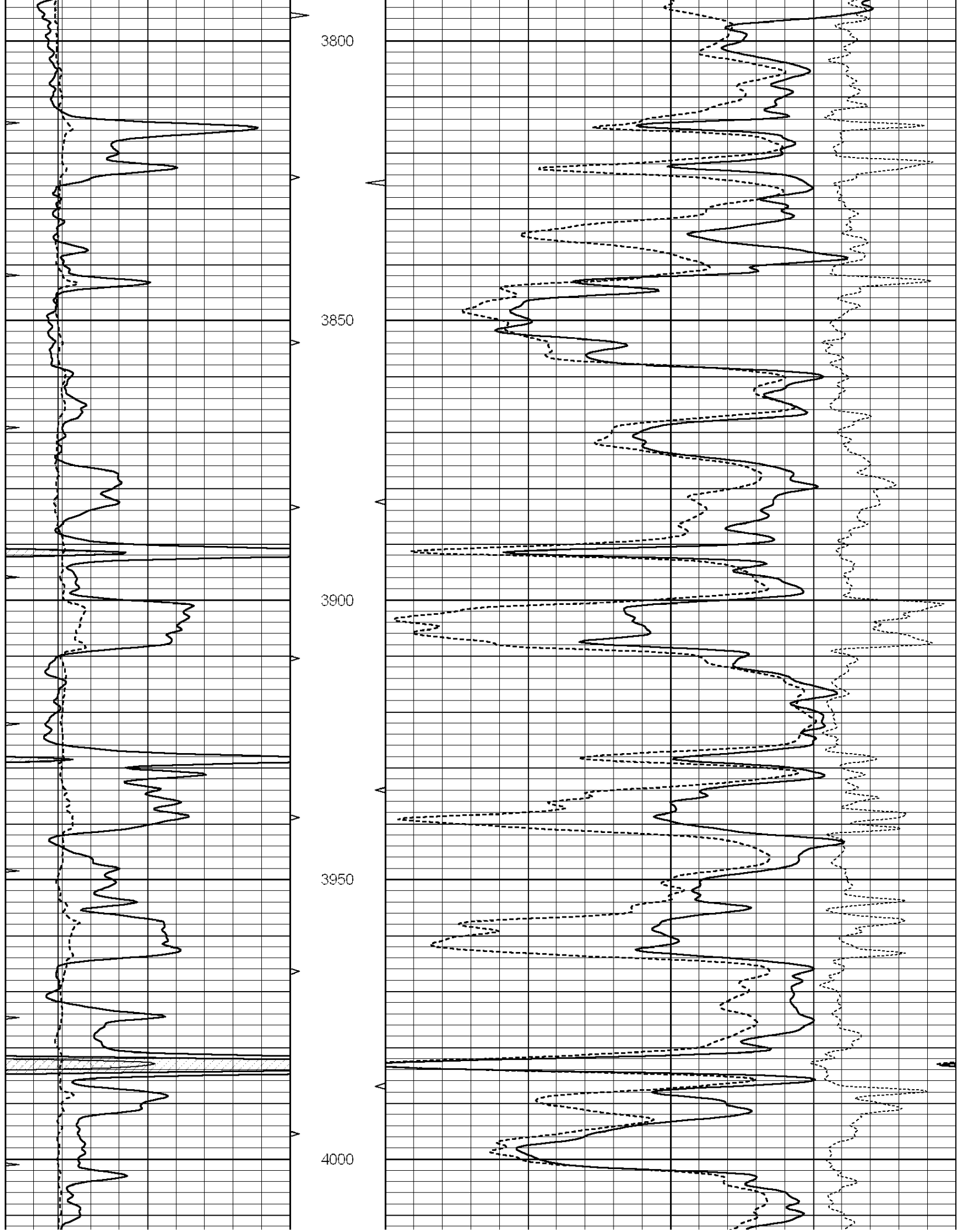
All interpretations are opinions based on inferences from electrical or other measurements and we cannot and do not guarantee the accuracy or correctness of any interpretation, and we shall not, except in the case of gross or willful negligence on our part, be liable or responsible for any loss, costs, damages, or expenses incurred or sustained by anyone resulting from any interpretation made by any of our officers, agents or employees. These interpretations are also subject to our general terms and conditions set out in our current Price Schedule.

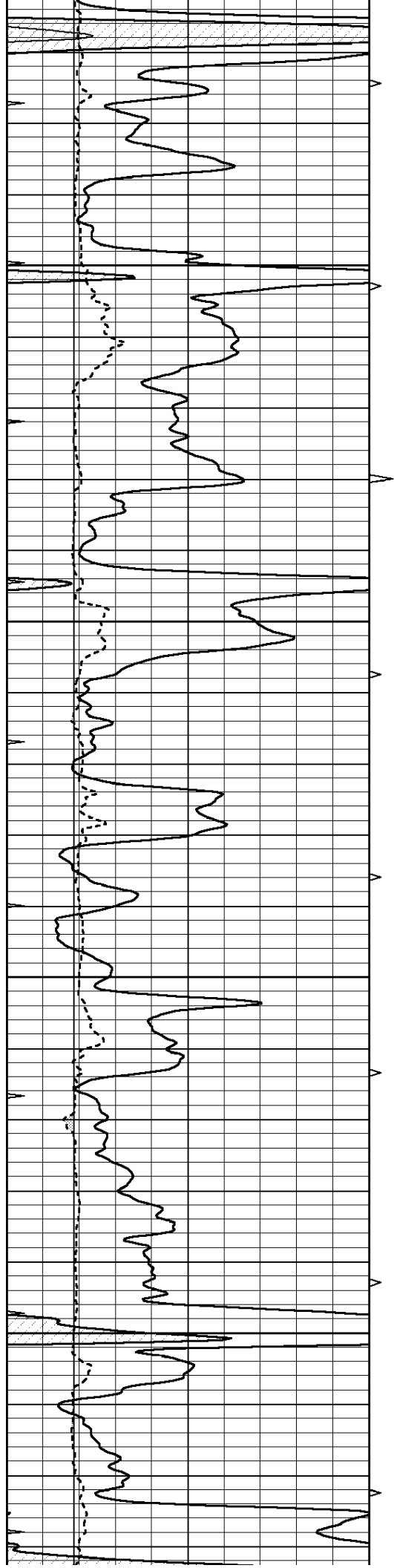
Comments

NABORS COMPLETION & PRODUCTION SERVICES  
785-628-6395  
THANK YOU FOR YOUR BUSINESS  
DIRECTIONS: GOVE, KS. - SOUTH 10 MILES - 3/4 EAST - SOUTH INTO

0	GAMMA RAY (GAPI)	150	ABHV	30	COMPENSATED DENSITY (pu)	-10
6	CALIPER (in)	16	10 (ft3)	0 30	COMPENSATED NEUTRON (pu)	-10
0	MINMK	20	TBHV		-0.25 CORRECTION (g/cc)	0.25
			0 (ft3)	10		





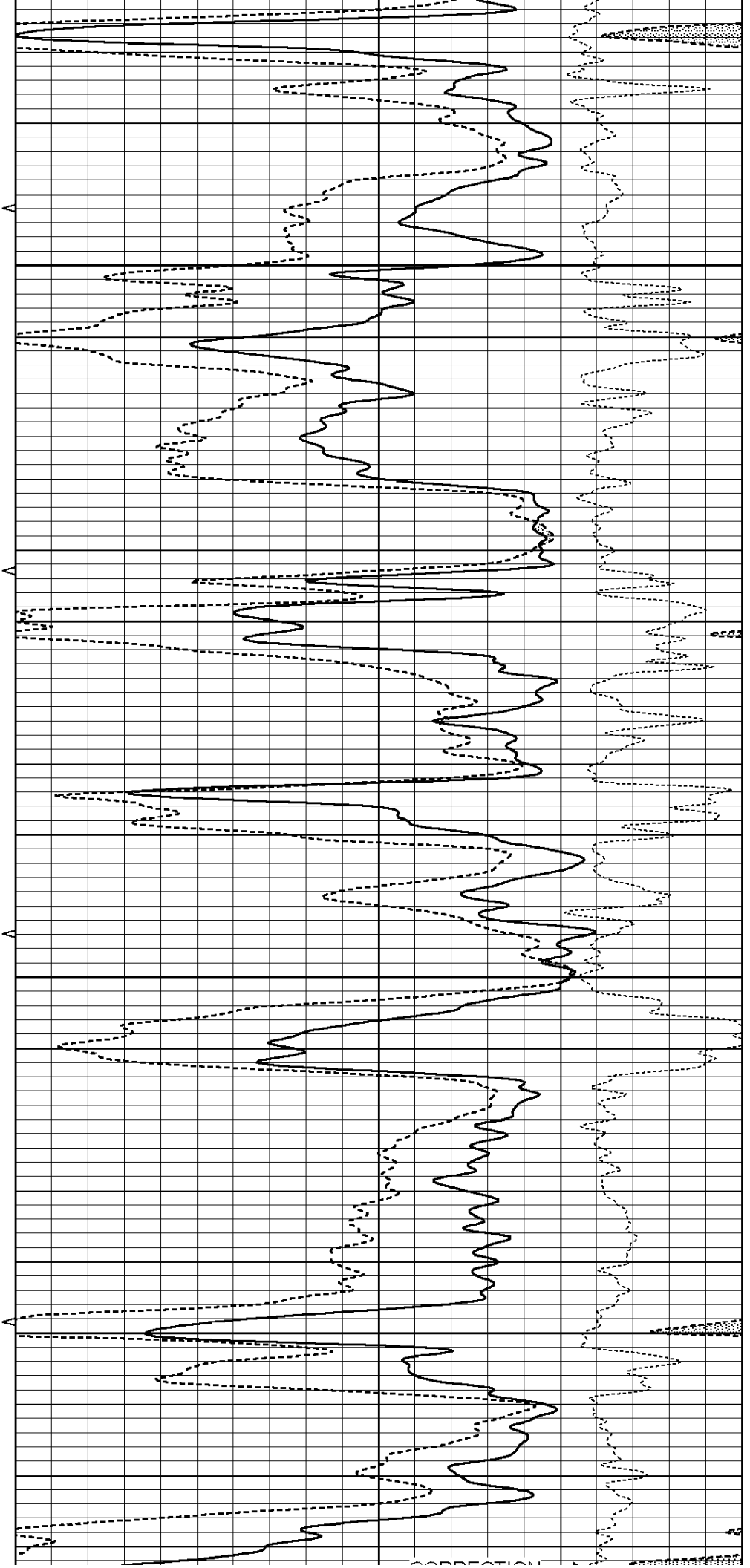


4050

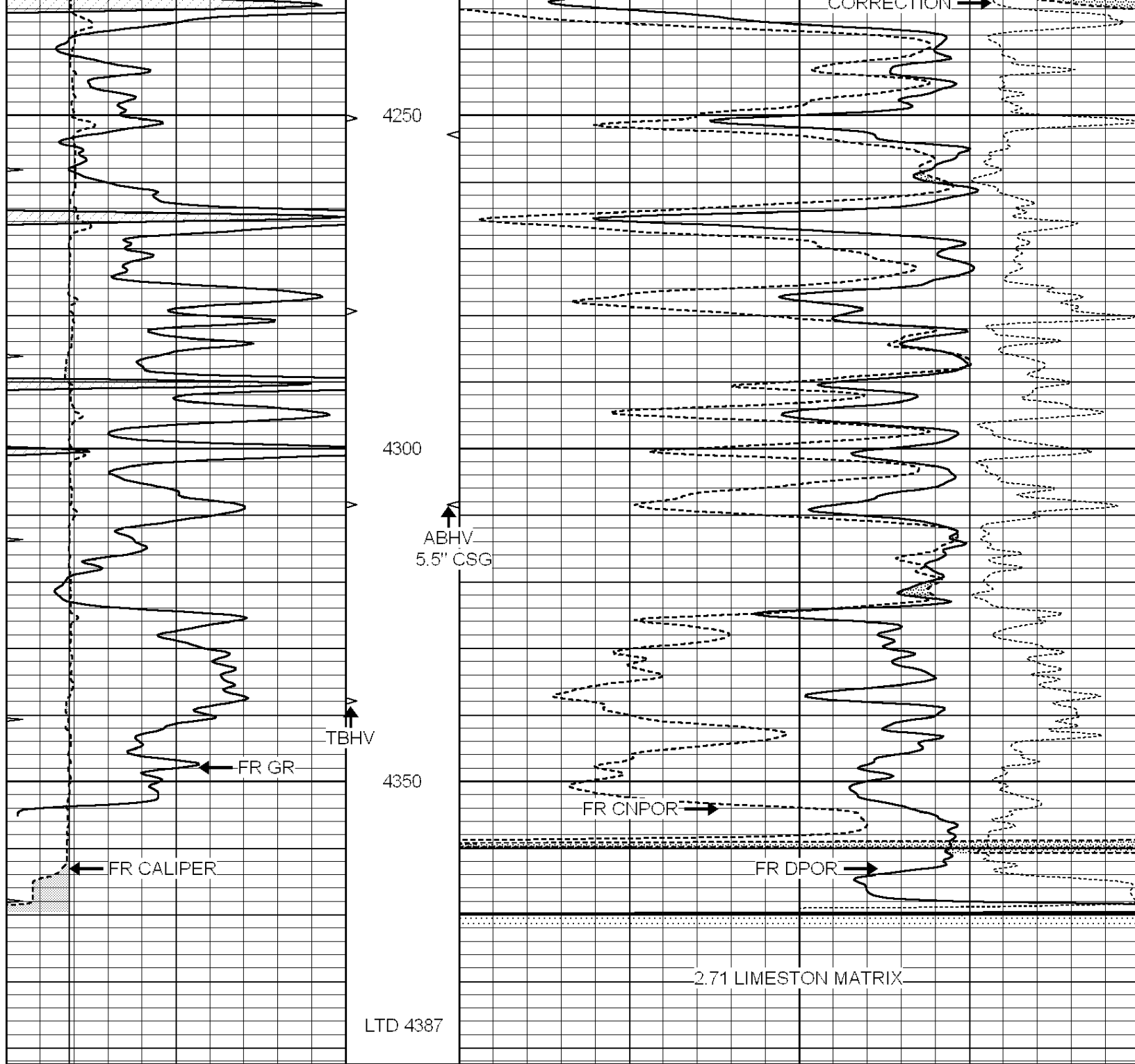
4100

4150

4200



correction



0	GAMMA RAY (GAPI)	150	ABHV	30	COMPENSATED DENSITY (pu)	-10	
6	CALIPER (in)	16	10 (ft3)	0 30	COMPENSATED NEUTRON (pu)	-10	
0	MINMK	20	TBHV		-0.25	CORRECTION (g/cc)	0.25
			0 (ft3)	10			



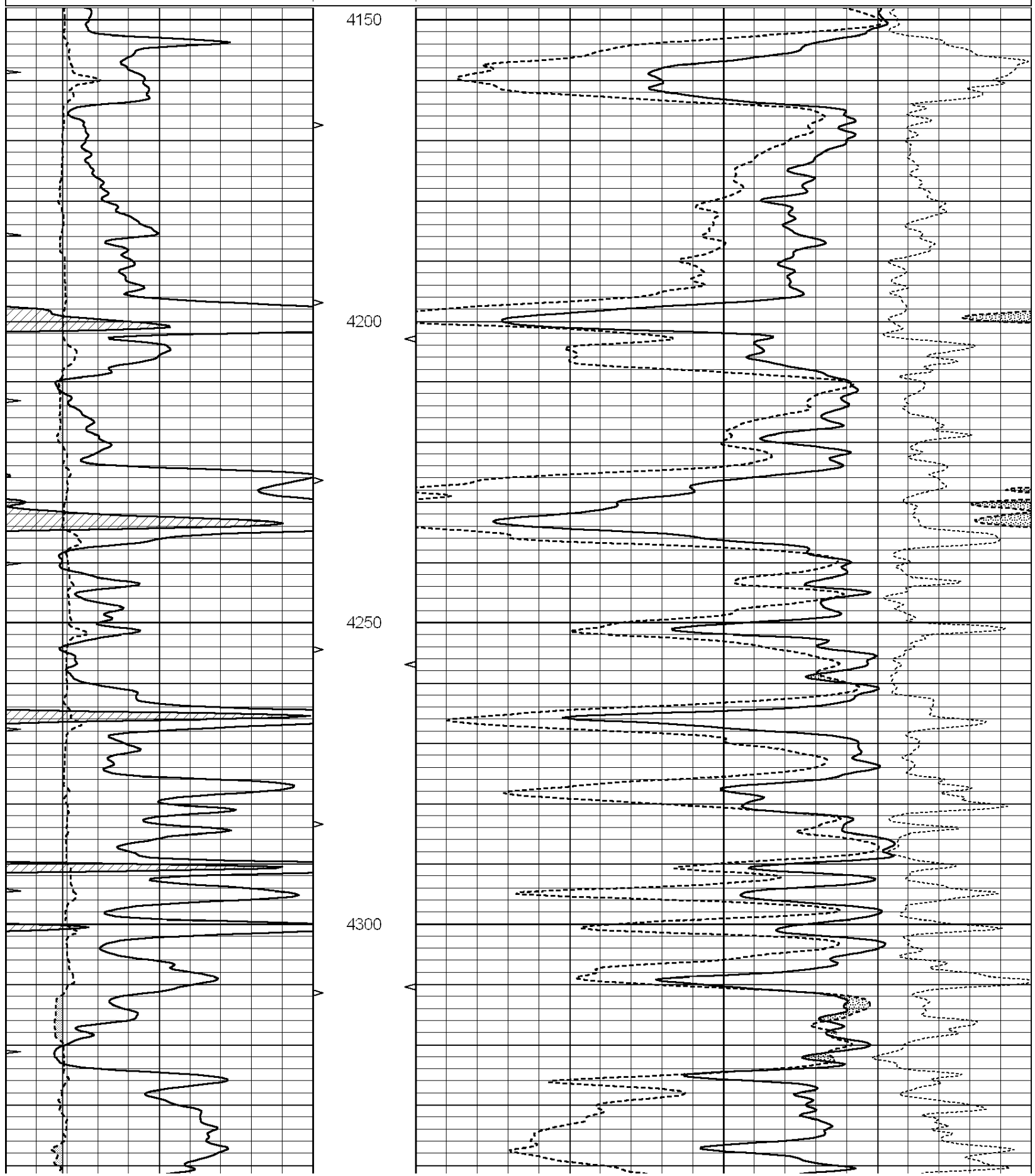
# REPEAT SECTION

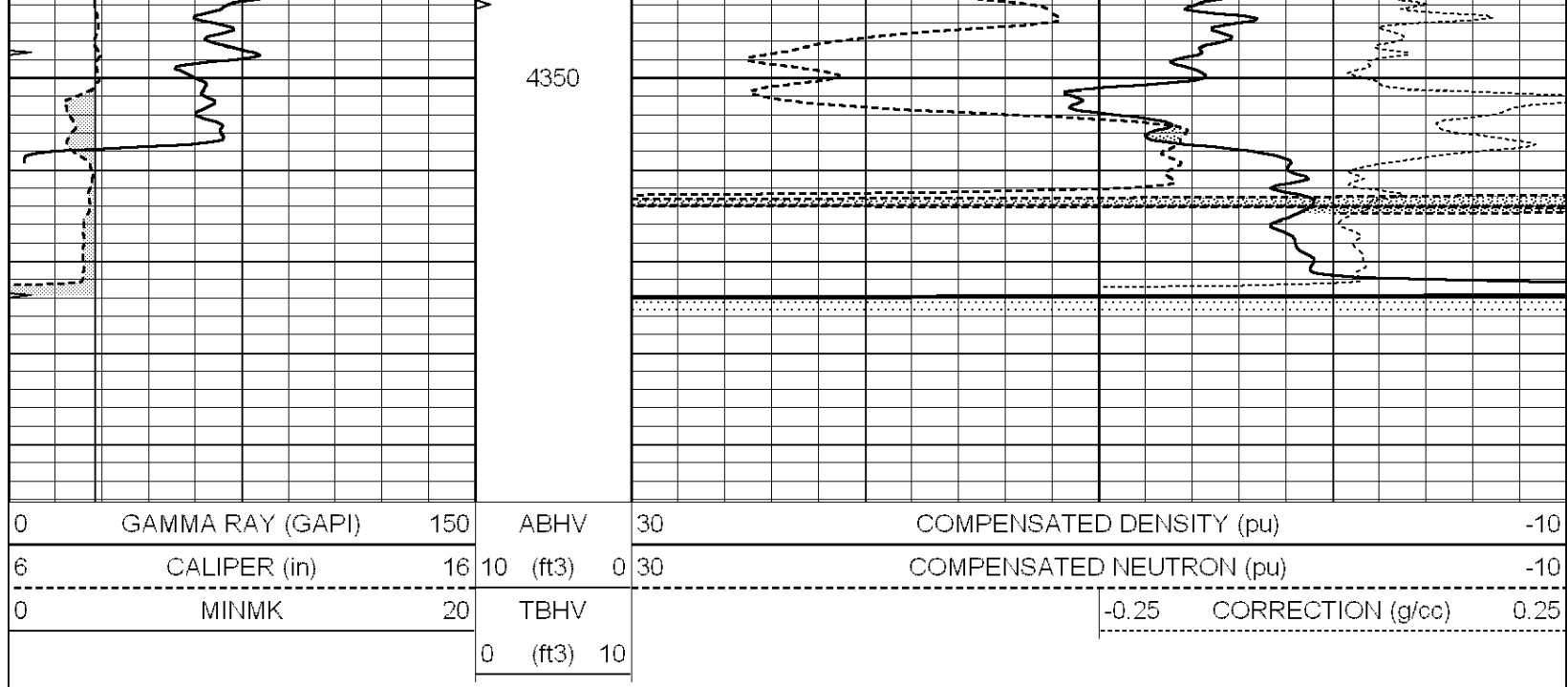
Database File: 23924ddn.db  
 Dataset Pathname: pass3.2  
 Presentation Format: \_den\_neu  
 Dataset Creation: Mon Mar 24 10:21:08 2014 by Calc Open-Cased 090629

Charted by:

Depth in Feet scaled 1:240

0	GAMMA RAY (GAPI)	150	ABHV	30	COMPENSATED DENSITY (pu)	-10	
6	CALIPER (in)	16	10 (ft3)	0	30	COMPENSATED NEUTRON (pu)	-10
0	MINMK	20	TBHV		-0.25	CORRECTION (g/cc)	0.25
			0 (ft3)	10			





### Calibration Report

Database File: 23924ddn.db  
 Dataset Pathname: pass4.2  
 Dataset Creation: Mon Mar 24 10:53:42 2014 by Calc Open-Cased 090629

### Dual Induction Calibration Report

Serial-Model: DIL3-GEAR  
 Performed: Wed Mar 05 17:42:55 2014

Loop:	Readings			References			Results	
	Air	Loop		Air	Loop		m	b
Deep	0.011	0.656	V	0.000	400.000	mmho/m	500.000	4.000
Medium	0.013	0.740	V	0.000	462.500	mmho/m	570.000	3.000
Internal:	Zero	Cal		Zero	Cal		m	b
Deep	0.002	0.645	V	0.000	400.000	mmho/m	560.000	-1.071
Medium	0.007	0.740	V	0.000	462.500	mmho/m	540.000	-4.000

### Compensated Density Calibration Report

Serial-Model: GEAR1-GEARHART  
 Source / Verifier: 147 / 147  
 Master Calibration Performed: Wed Mar 05 16:50:17 2014

#### Master Calibration

	Density		Far Detector	Near Detector	
Magnesium	1.710	g/cc	1211.27	625.92	cps
Aluminum	2.600	g/cc	267.11	413.26	cps
Spine Angle = 74.64			Density/Spine Ratio = 0.568		
	Size		Reading		
Small Ring	8.20	in	5.18	V	
Large Ring	14.00	in	8.18	V	

### Compensated Neutron Calibration Report

Serial Number: 080620  
Tool Model: Probe

PRE-SURVEY VERIFICATION

Detector	Readings	Measured	Target
Short Space	cps		
Long Space	cps	pu	pu

POST-SURVEY VERIFICATION

Detector	Readings	Measured	Target
Short Space	cps		
Long Space	cps	pu	pu

Gamma Ray Calibration Report

Serial Number:	7	
Tool Model:	Probe1	
Performed:	Tue Mar 04 10:47:15 2014	
Calibrator Value:	1.0	GAPI
Background Reading:	0.0	cps
Calibrator Reading:	1.0	cps
Sensitivity:	0.4500	GAPI/cps