



**COMPLETION
& PRODUCTION
SERVICES CO.**

**MICRO
LOG**

Company MUSTANG ENERGY CORPORATION
Well EVANS UNIT #1
Field JIM NORTH
County GOVE State KANSAS

Company MUSTANG ENERGY CORPORATION
Well EVANS UNIT #1
Field JIM NORTH
County GOVE
State KANSAS

Location: API #: 15-063-22186-00-00
1000' FNL & 1250' FEL
SW - SW - NE - NE
SEC 25 TWP 14S RGE 29W
GROUND LEVEL Elevation 2612
Log Measured From KELLY BUSHING 8' A.G.L.
Drilling Measured From KELLY BUSHING

Other Services
CNL/CDL
DIL
Elevation
K.B. 2620
D.F. 2618
G.L. 2612

| | | | |
|------------------------------|--------------|-----------------|--|
| Date | 3-24-14 | | |
| Run Number | TWO | | |
| Depth Driller | 4385 | | |
| Depth Logger | 4387 | | |
| Bottom Logged Interval | 4385 | | |
| Top Log Interval | 3600 | | |
| Casing Driller | 8 5/8 @ 222' | | |
| Casing Logger | 222' | | |
| Bit Size | 7.875 | | |
| Type Fluid in Hole | STARCH MUD | CHLORIDES 1.750 | |
| Density / Viscosity | 9.4 / 50 | | |
| pH / Fluid Loss | 9.5 / 9.2 | | |
| Source of Sample | FLOWLINE | | |
| Rim @ Meas. Temp | 0.70 @ 64F | | |
| Rmf @ Meas. Temp | 0.53 @ 64F | | |
| Rmc @ Meas. Temp | 0.84 @ 64F | | |
| Source of Rmf / Rmc | MEASURED | | |
| Rim @ BHT | 0.40 @ 119F | | |
| Time Circulation Stopped | 2 HOURS | | |
| Time Logger on Bottom | | | |
| Maximum Recorded Temperature | 119F | | |
| Equipment Number | 860 | | |
| Location | HAYS, KS. | | |
| Recorded By | IAN MABB | | |
| Witnessed By | HERB DEINES | | |

<<< Fold Here >>>

All interpretations are opinions based on inferences from electrical or other measurements and we cannot and do not guarantee the accuracy or correctness of any interpretation, and we shall not, except in the case of gross or willful negligence on our part, be liable or responsible for any loss, costs, damages, or expenses incurred or sustained by anyone resulting from any interpretation made by any of our officers, agents or employees. These interpretations are also subject to our general terms and conditions set out in our current Price Schedule.

Comments

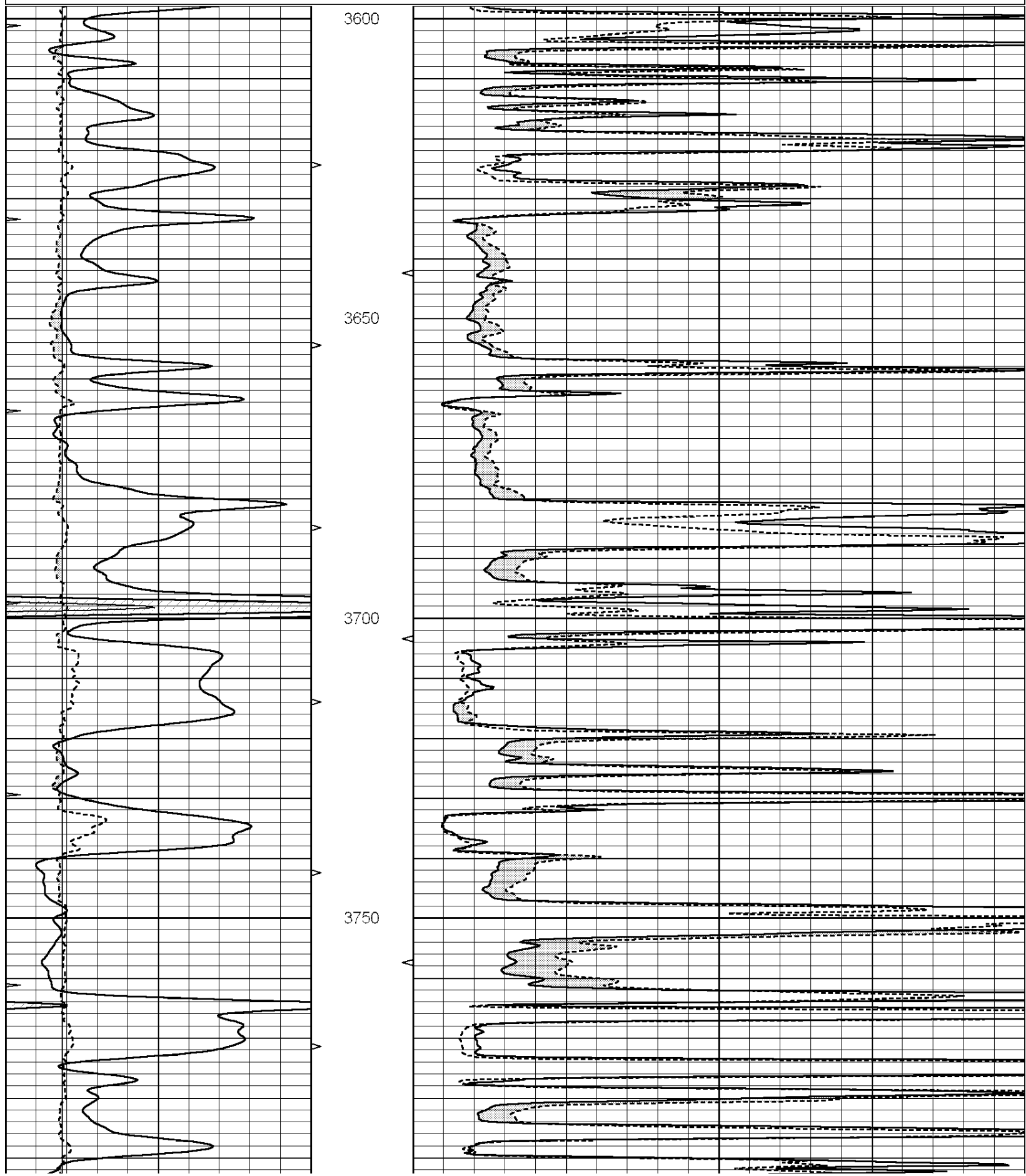
NABORS COMPLETION & PRODUCTION SERVICES
785-628-6395
THANK YOU FOR YOUR BUSINESS
DIRECTIONS: GOVE, KS. - SOUTH 10 MILES - 3/4 EAST - SOUTH INTO

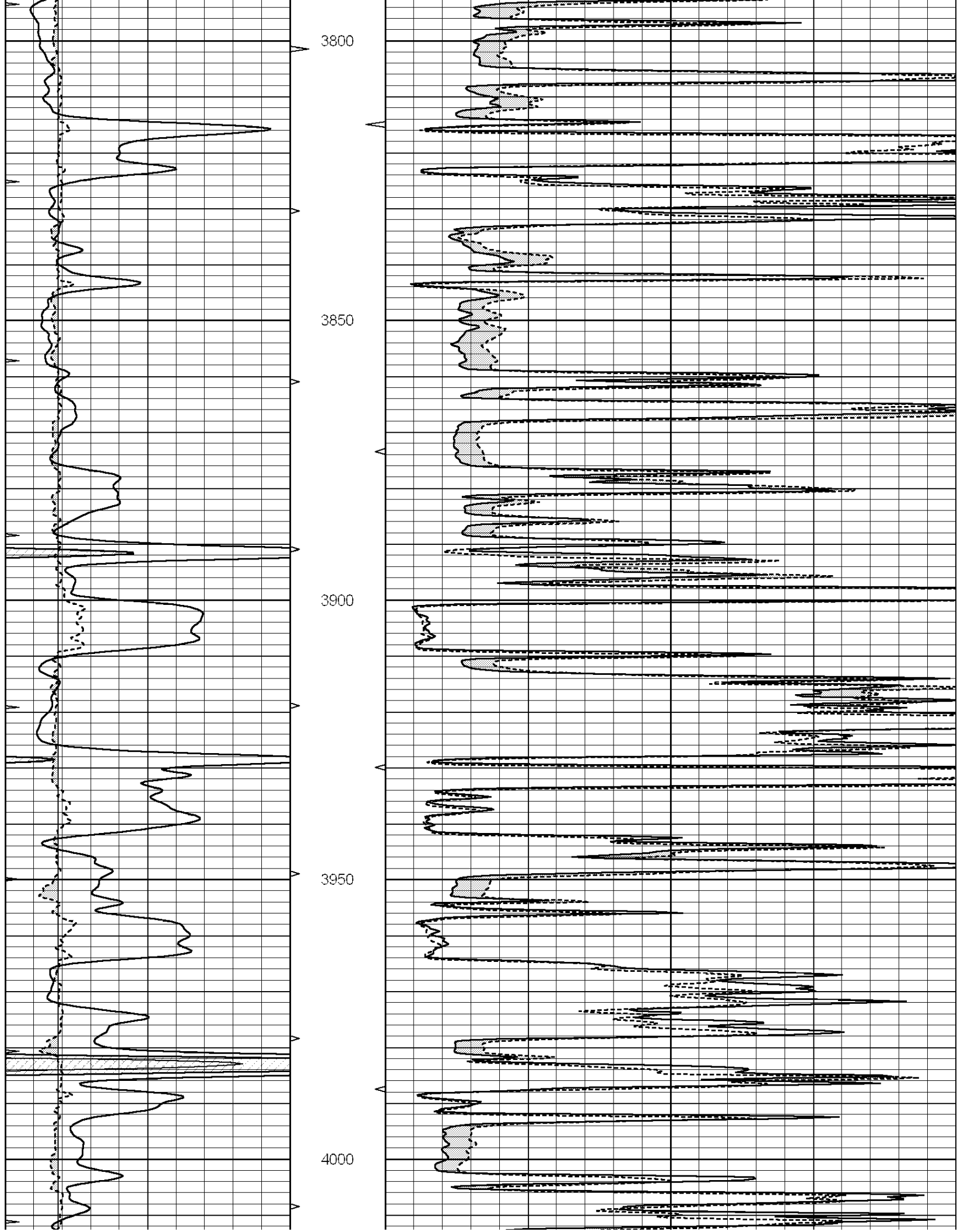
Charted by:

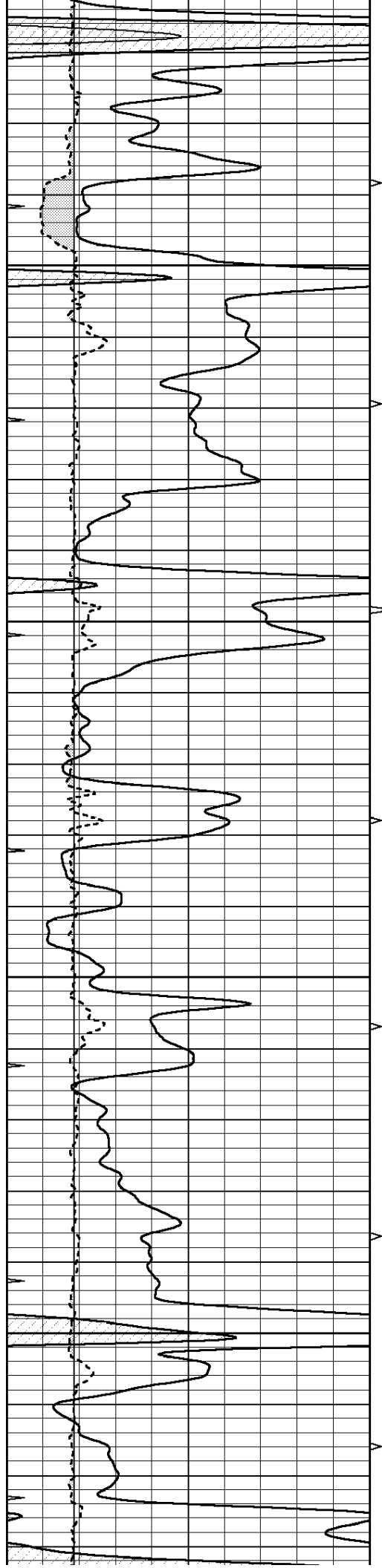
Depth in Feet scaled 1:240

| | | |
|---|------------------|-----|
| 0 | GAMMA RAY (GAPI) | 150 |
| 6 | MELCAL (in) | 16 |
| 0 | MINMK | 20 |

| | | |
|---|----------------|----|
| 0 | MEL1.5 (Ohm-m) | 40 |
| 0 | MEL2.0 (Ohm-m) | 40 |





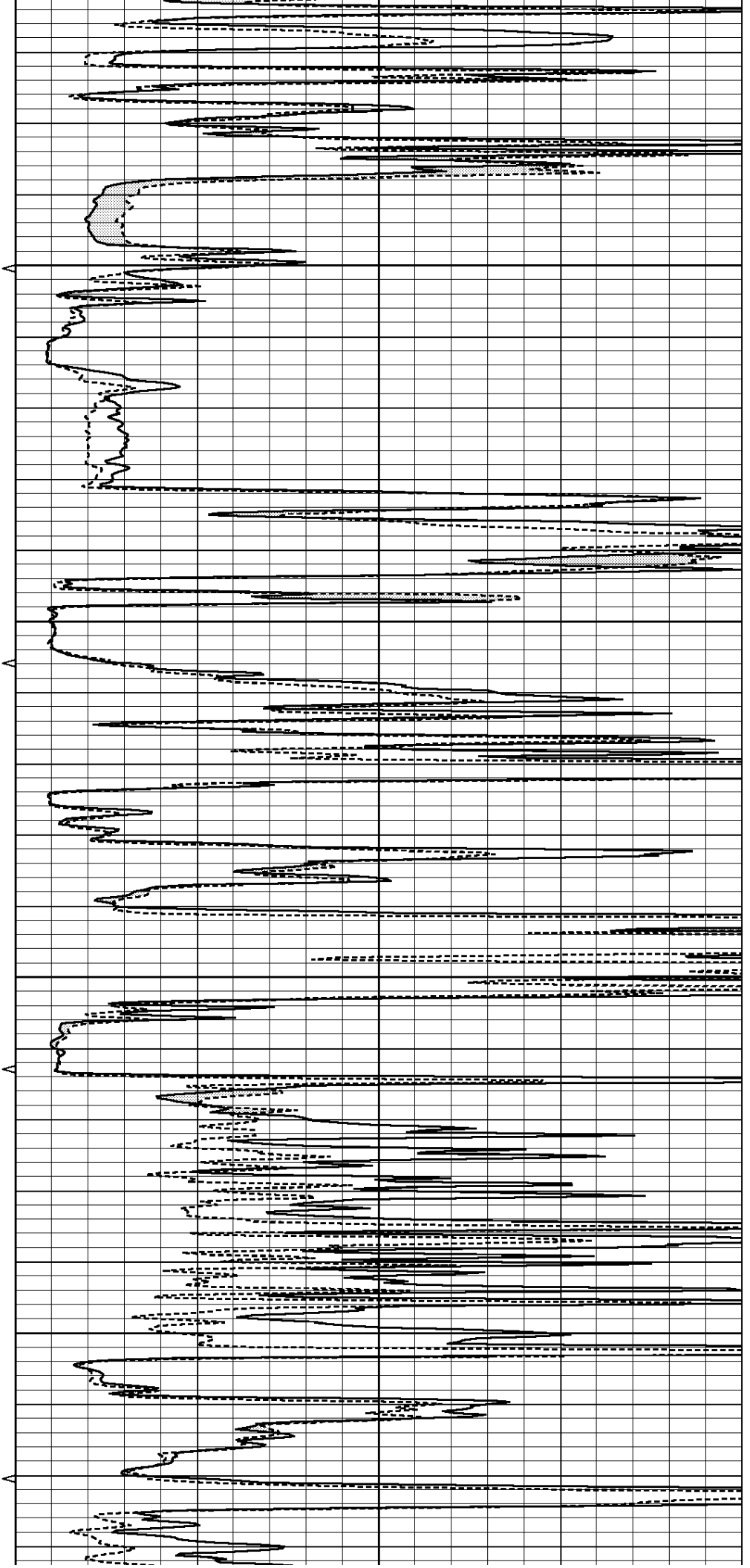


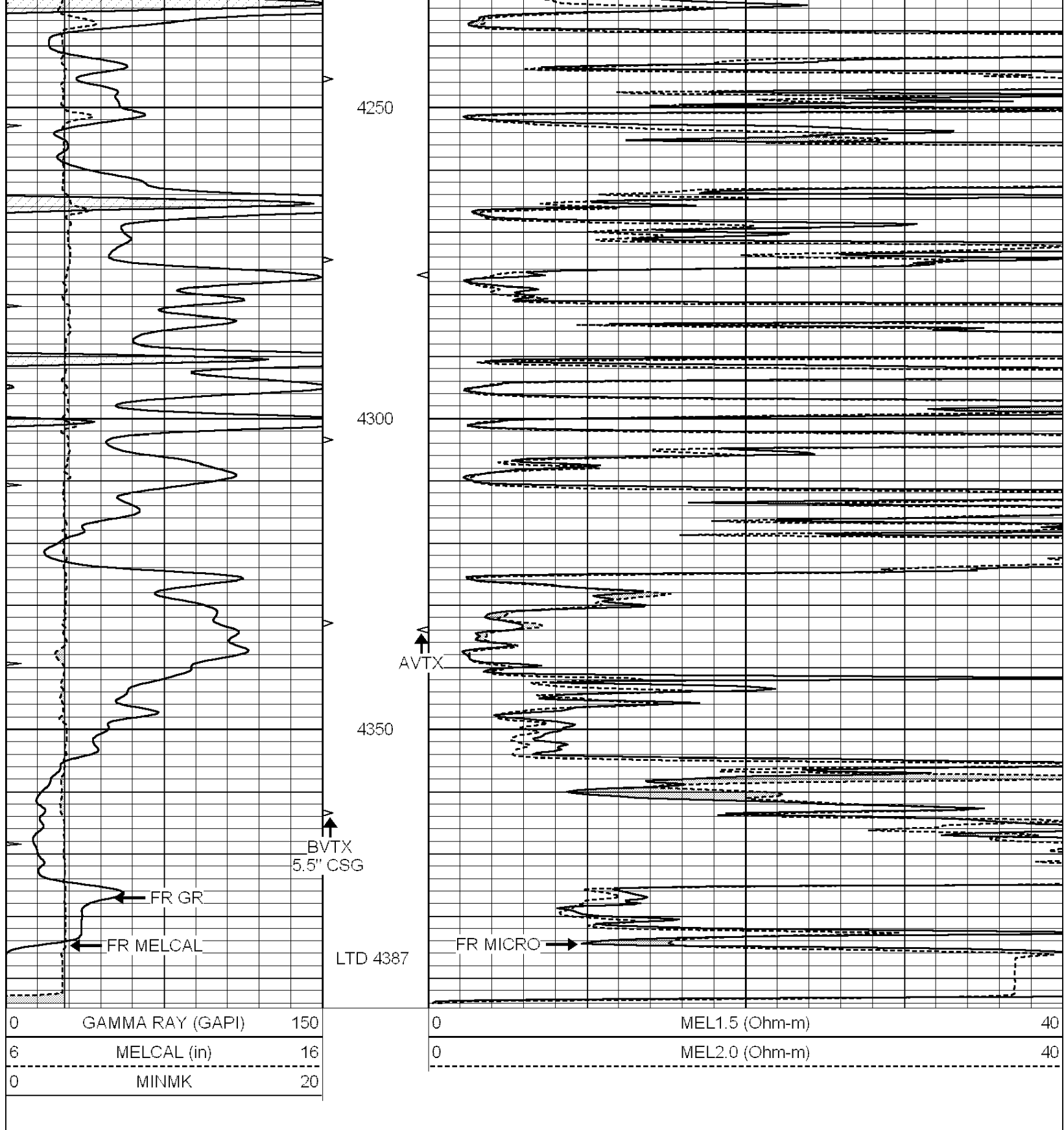
4050

4100

4150

4200



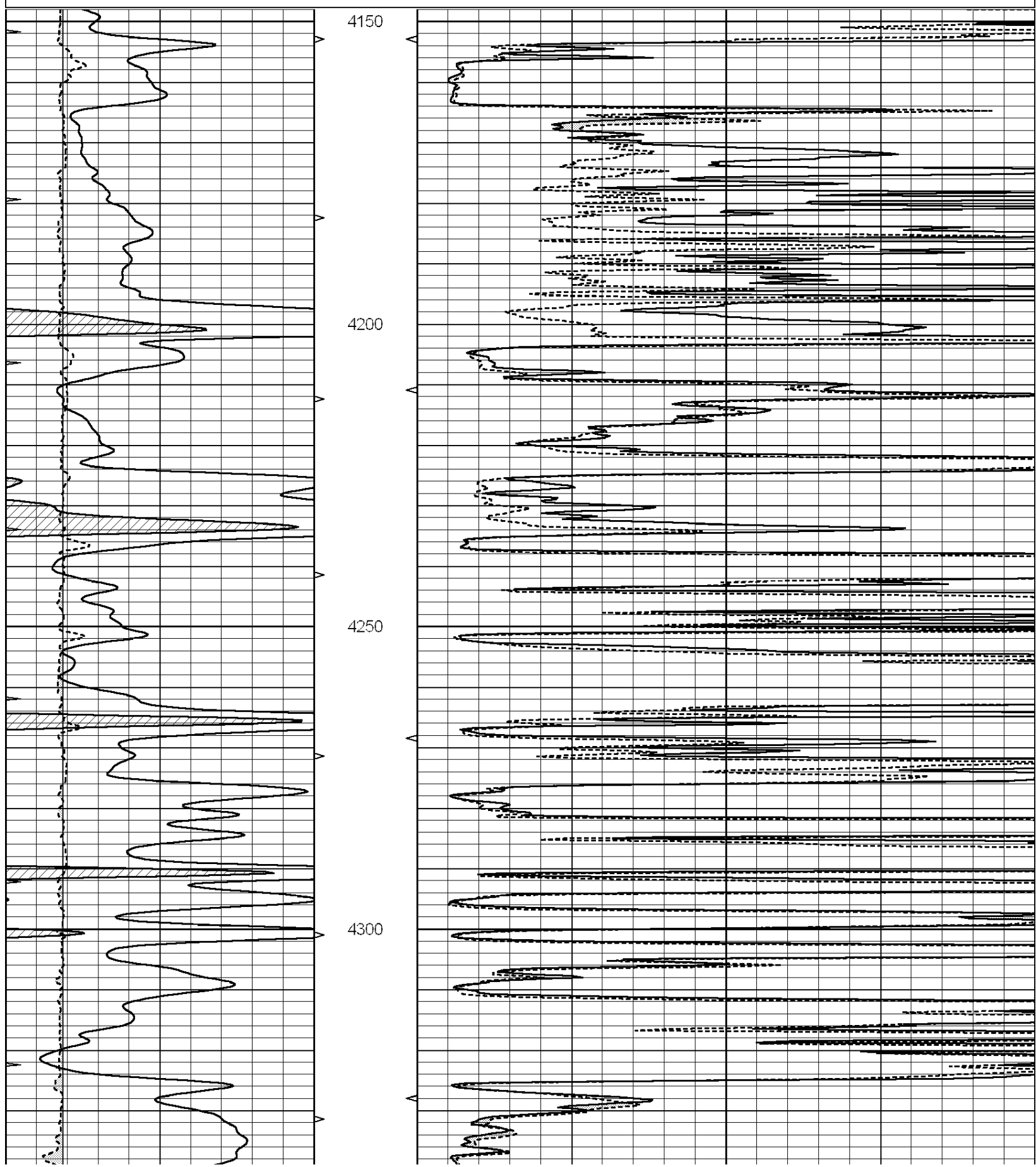


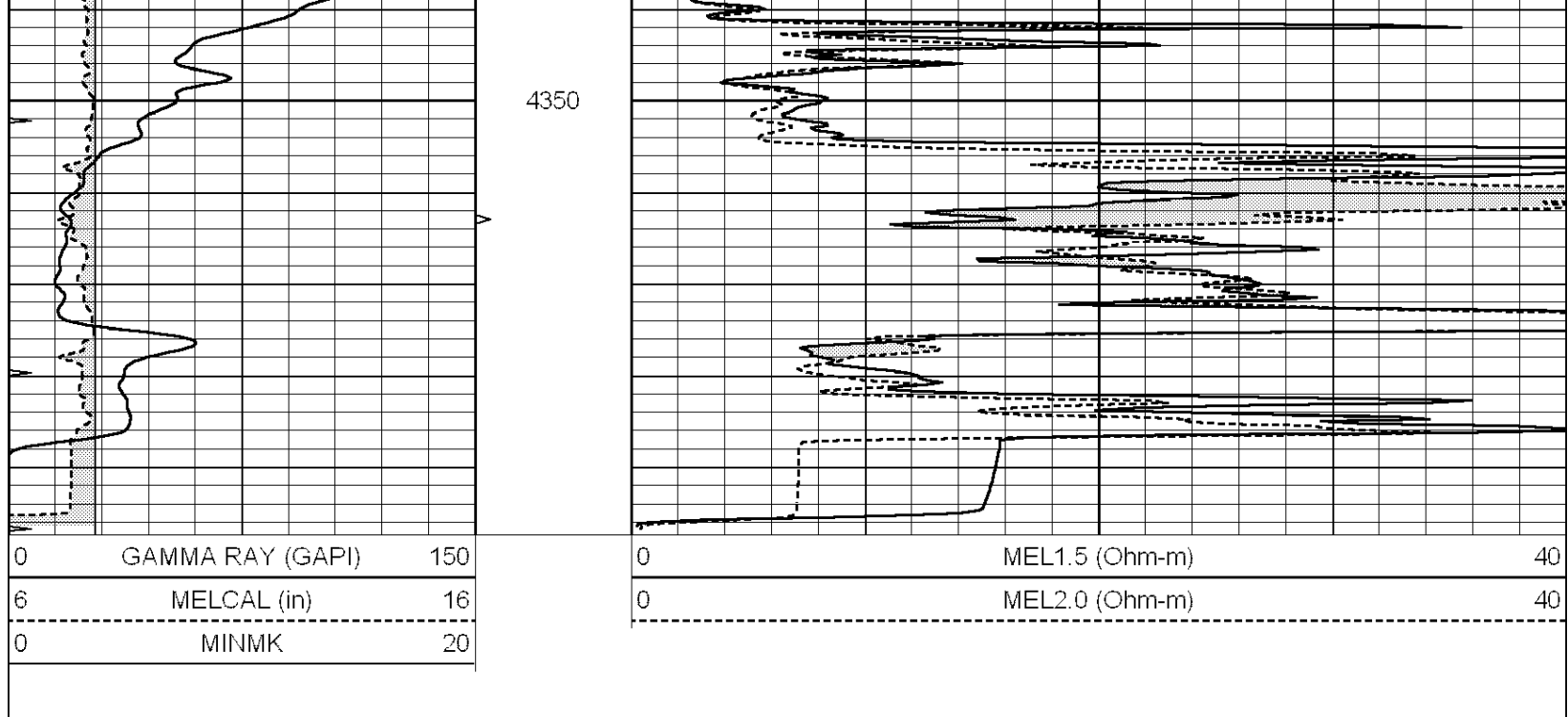
REPEAT SECTION

Database File: 23924ddn.db
 Dataset Pathname: pass6.1
 Presentation Format: _micro

| | | |
|-------|------------------|-----|
| 0 | GAMMA RAY (GAPI) | 150 |
| 6 | MELCAL (in) | 16 |
| ----- | | |
| 0 | MINMK | 20 |

| | | |
|-------|----------------|----|
| 0 | MEL1.5 (Ohm-m) | 40 |
| 0 | MEL2.0 (Ohm-m) | 40 |
| ----- | | |





Calibration Report

Database File: 23924ddn.db
 Dataset Pathname: pass8.2
 Dataset Creation: Mon Mar 24 13:10:53 2014 by Calc Open-Cased 090629

MICRO Calibration Report

| | | |
|----------------------|--------------------------|-----------------|
| Serial Number: | MICRO5 | |
| Tool Model: | PROBE | |
| Performed: | Wed Mar 05 19:18:42 2014 | |
| Caliper Calibration: | Gain=3.536 | Offset=-6.100 |
| References | Low Cal 6.200 | High Cal 15.000 |
| Readings | 3.737 | 5.660 |
| 1.5" Calibration: | Gain=20.334 | Offset=0.250 |
| References | Low Cal 0.000 | High Cal 20.000 |
| Readings | 0.025 | 1.009 |
| 2" Calibration: | Gain=25.398 | Offset=0.400 |
| References | Low Cal 0.000 | High Cal 20.000 |
| Readings | 0.014 | 0.802 |

Gamma Ray Calibration Report

| | | |
|---------------------|--------------------------|----------|
| Serial Number: | GR2 | |
| Tool Model: | OPEN | |
| Performed: | Mon Mar 24 12:21:22 2014 | |
| Calibrator Value: | 200.0 | GAPI |
| Background Reading: | 0.0 | cps |
| Calibrator Reading: | 740.0 | cps |
| Sensitivity: | 0.3400 | GAPI/cps |