



**COMPLETION  
& PRODUCTION  
SERVICES CO.**

**DUAL  
INDUCTION  
LOG**

Company MUSTANG ENERGY CORPORATION  
Well EVANS UNIT #1  
Field JIM NORTH  
County GOVE State KANSAS

Company MUSTANG ENERGY CORPORATION  
Well EVANS UNIT #1  
Field JIM NORTH  
County GOVE  
State KANSAS

Location: API #: 15-063-22186-00-00  
1000' FNL & 1250' FEL  
SW - SW - NE - NE  
SEC 25 TWP 14S RGE 29W  
GROUND LEVEL Elevation 2612  
Log Measured From KELLY BUSHING 8' A.G.L.  
Drilling Measured From KELLY BUSHING  
Other Services  
CNL/CDL  
MEL  
Elevation  
K.B. 2620  
D.F. 2618  
G.L. 2612

Date	3-24-14		
Run Number	ONE		
Depth Driller	4385		
Depth Logger	4387		
Bottom Logged Interval	4385		
Top Log Interval	00		
Casing Driller	8 5/8 @ 222'		
Casing Logger	222'		
Bit Size	7.875		
Type Fluid in Hole	STARCH MUD	CHLORIDES 1.750	
Density / Viscosity	9.4 / 50		
pH / Fluid Loss	9.5 / 9.2		
Source of Sample	FLOWLINE		
Rim @ Meas. Temp	0.70 @ 64F		
Rmf @ Meas. Temp	0.53 @ 64F		
Rmc @ Meas. Temp	0.84 @ 64F		
Source of Rmf / Rmc	MEASURED		
Rim @ BHT	0.40 @ 119F		
Time Circulation Stopped	2 HOURS		
Time Logger on Bottom			
Maximum Recorded Temperature	119F		
Equipment Number	860		
Location	HAYS, KS.		
Recorded By	IAN MABB		
Witnessed By	HERB DEINES		

<<< Fold Here >>>

All interpretations are opinions based on inferences from electrical or other measurements and we cannot and do not guarantee the accuracy or correctness of any interpretation, and we shall not, except in the case of gross or willful negligence on our part, be liable or responsible for any loss, costs, damages, or expenses incurred or sustained by anyone resulting from any interpretation made by any of our officers, agents or employees. These interpretations are also subject to our general terms and conditions set out in our current Price Schedule.

**Comments**

**NABORS COMPLETION & PRODUCTION SERVICES**  
785-628-6395  
**THANK YOU FOR YOUR BUSINESS**  
**DIRECTIONS: GOVE, KS. - SOUTH 10 MILES - 3/4 EAST - SOUTH INTO**

0 Gamma Ray (GAPI) 150

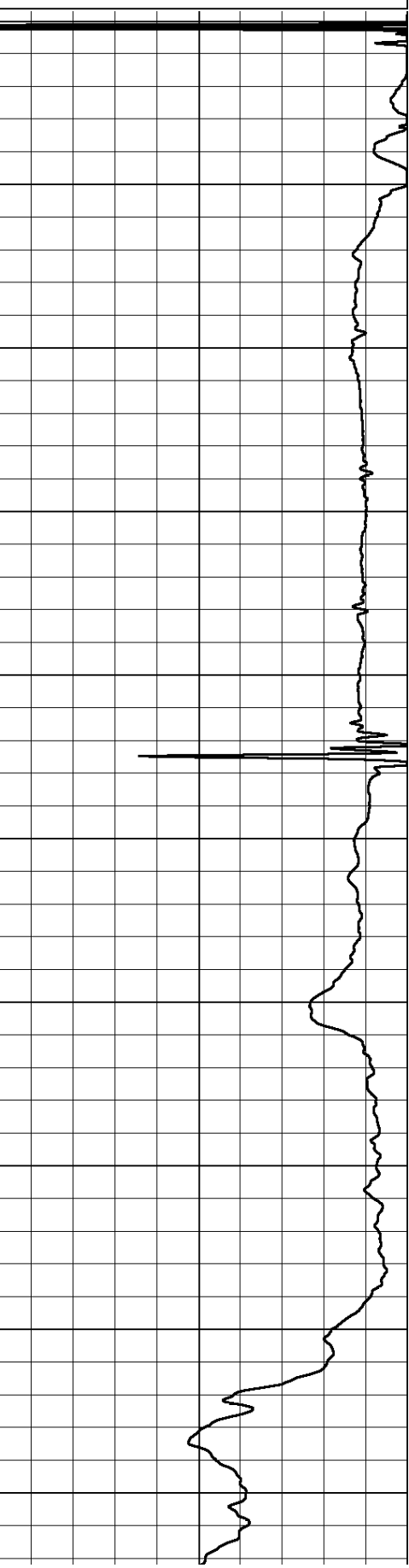
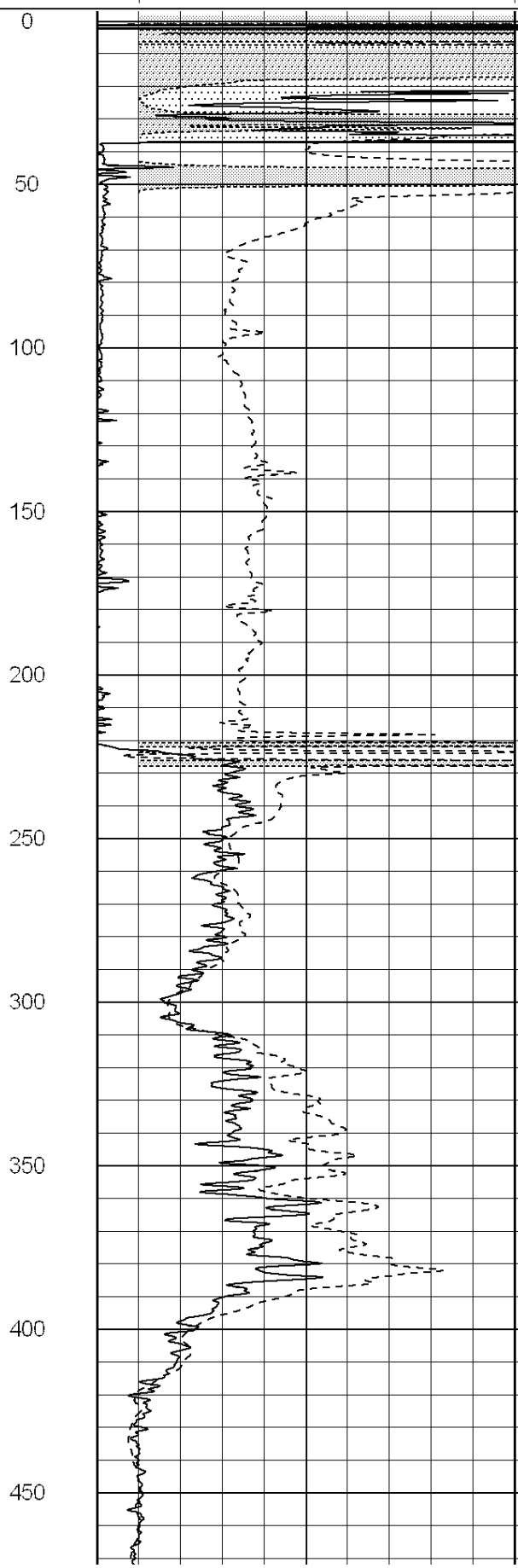
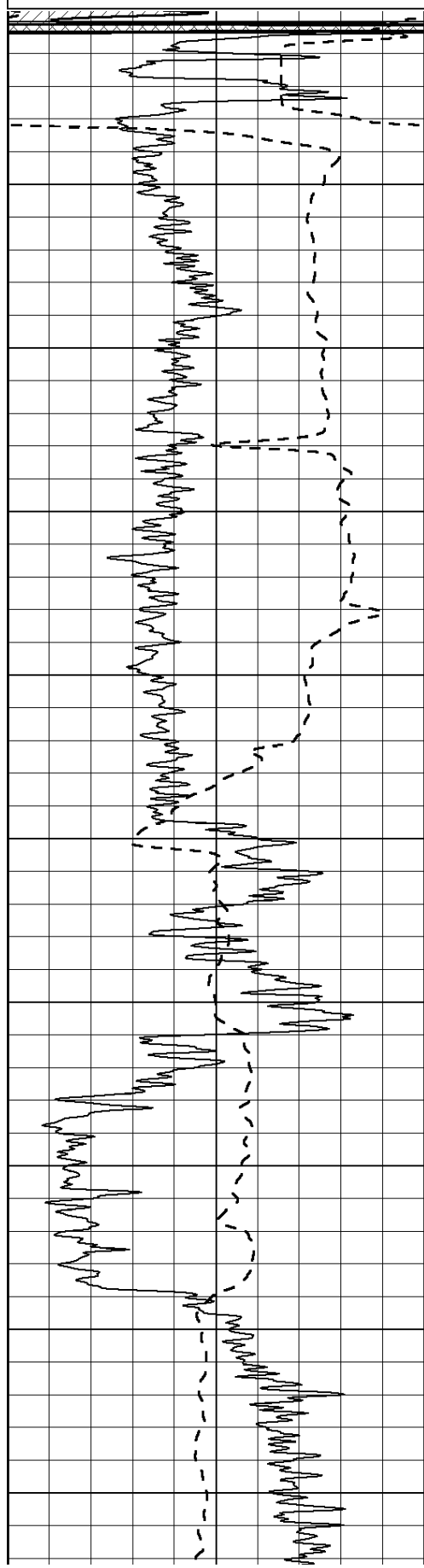
0 RLL3 (Ohm-m) 50

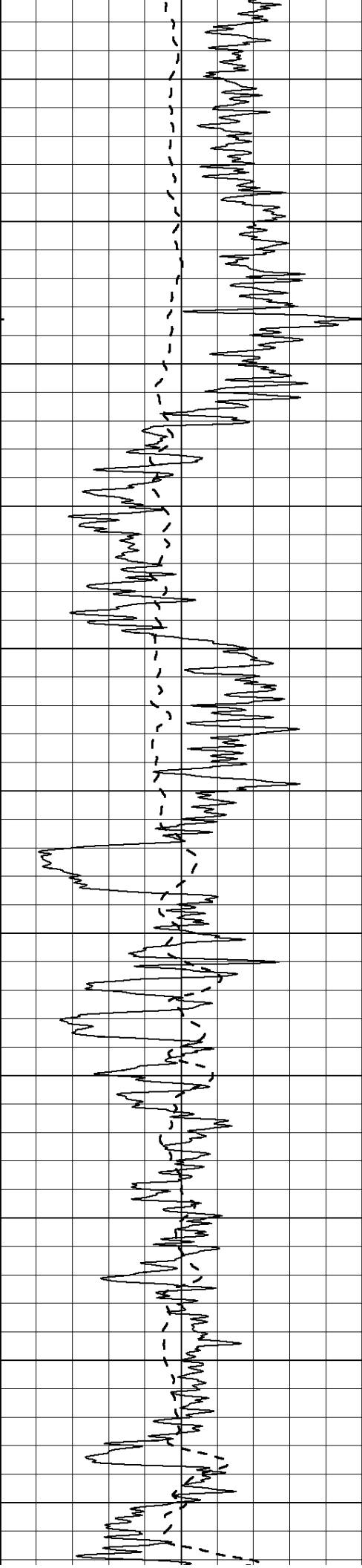
0 Deep Induction (Ohm-m) 50

1000 CILD (mmho/m) 0

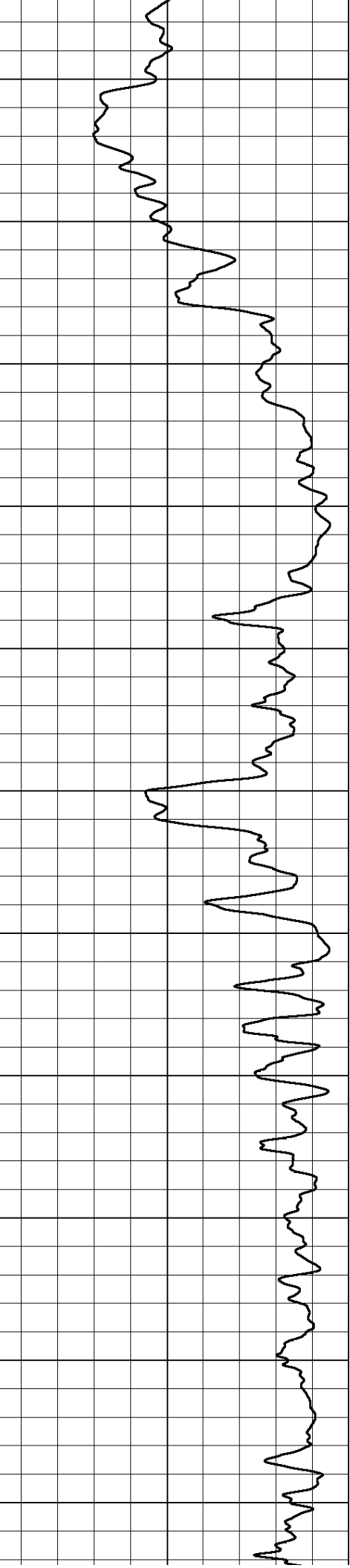
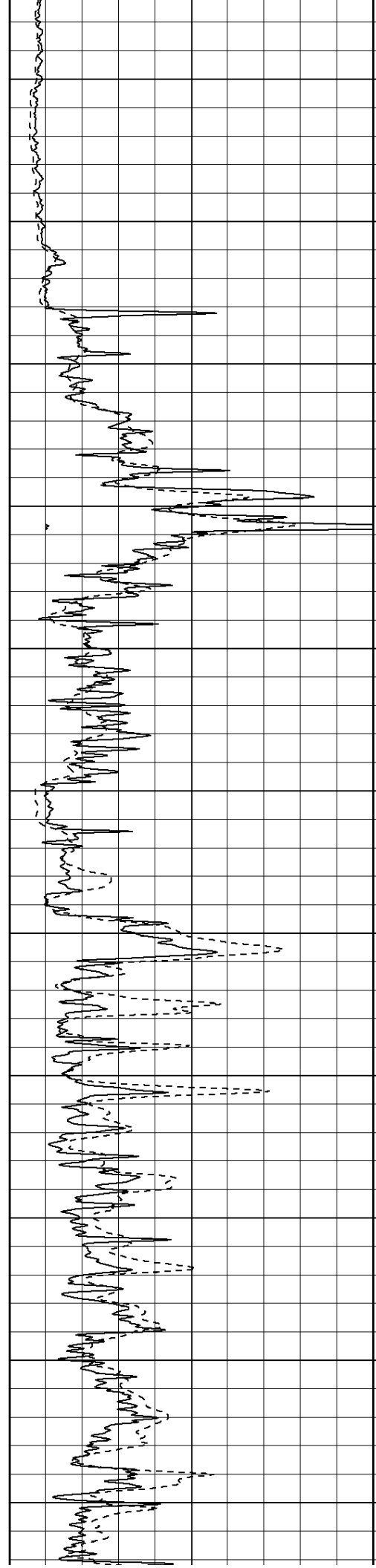
50 RILD X10 (Ohm-m) 500

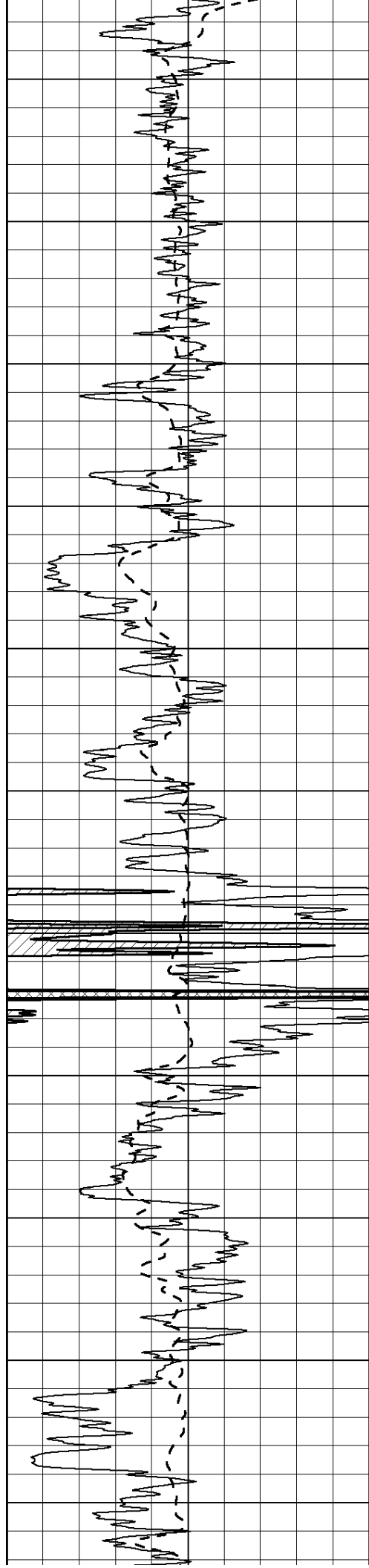
50 RLL3 X10 (Ohm-m) 500





500  
550  
600  
650  
700  
750  
800  
850  
900  
950  
1000





1050

1100

1150

1200

1250

1300

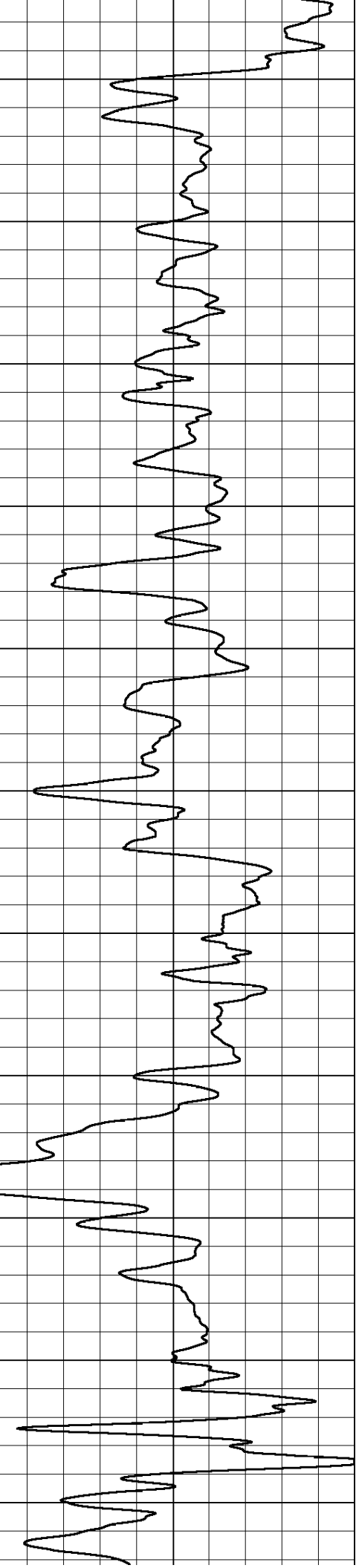
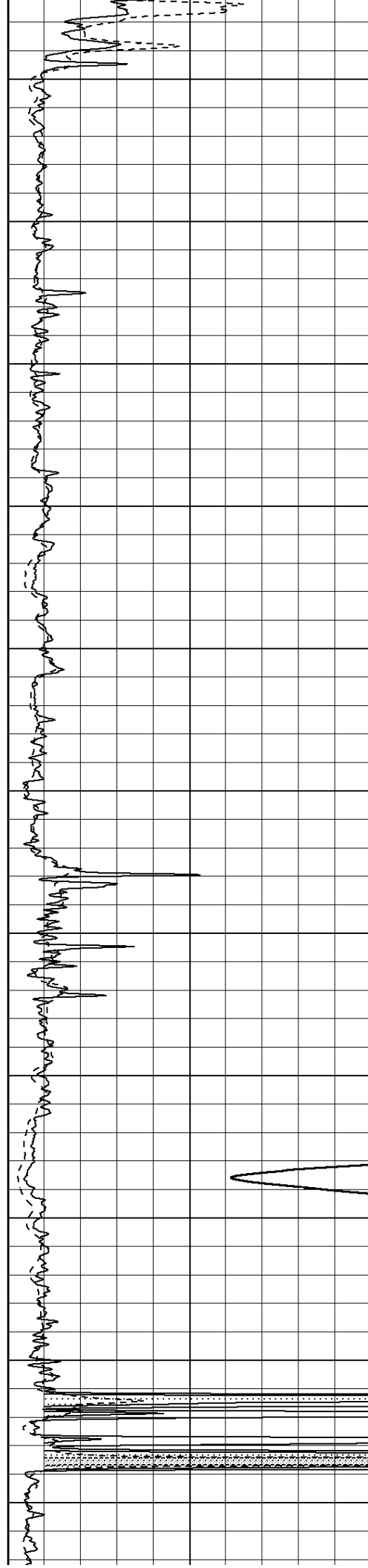
1350

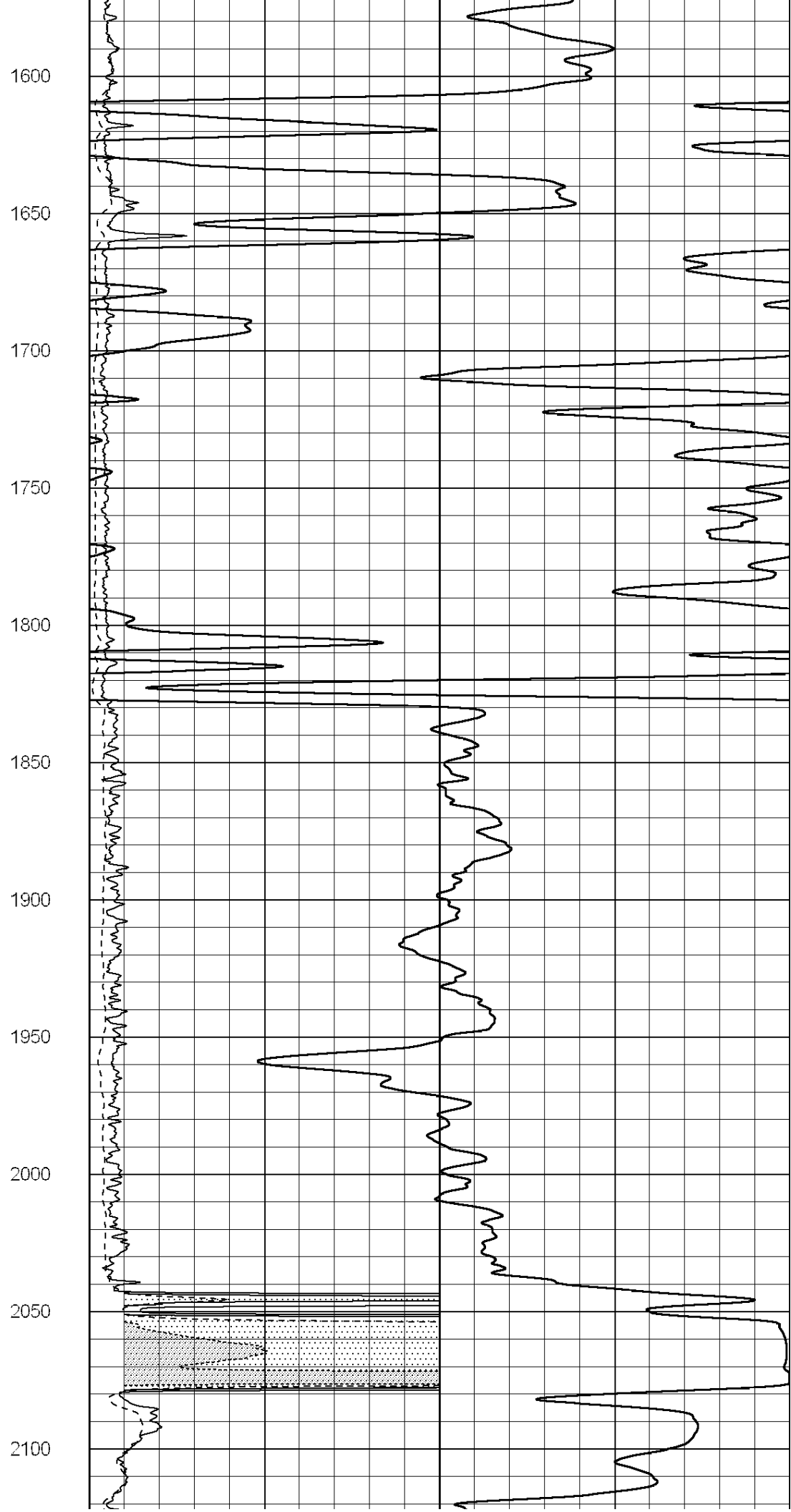
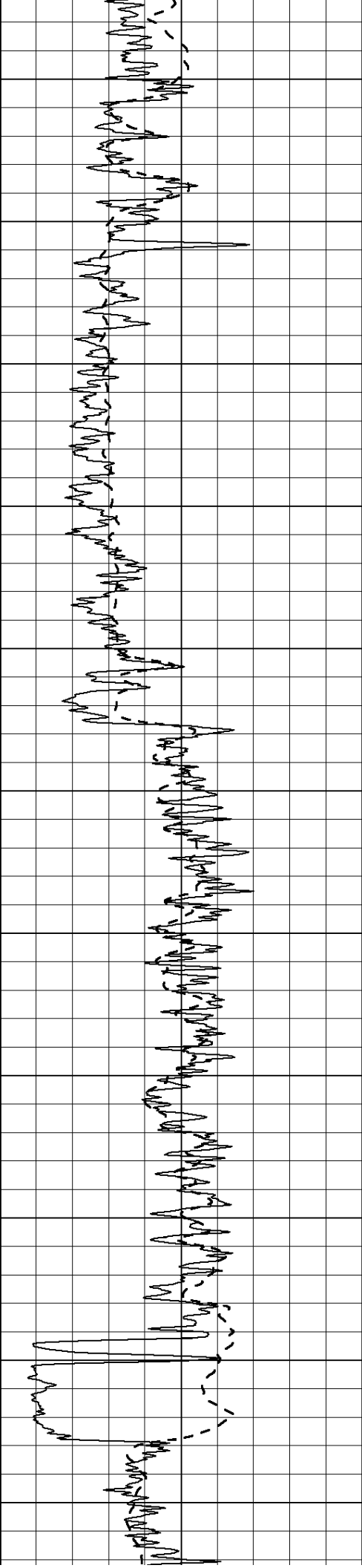
1400

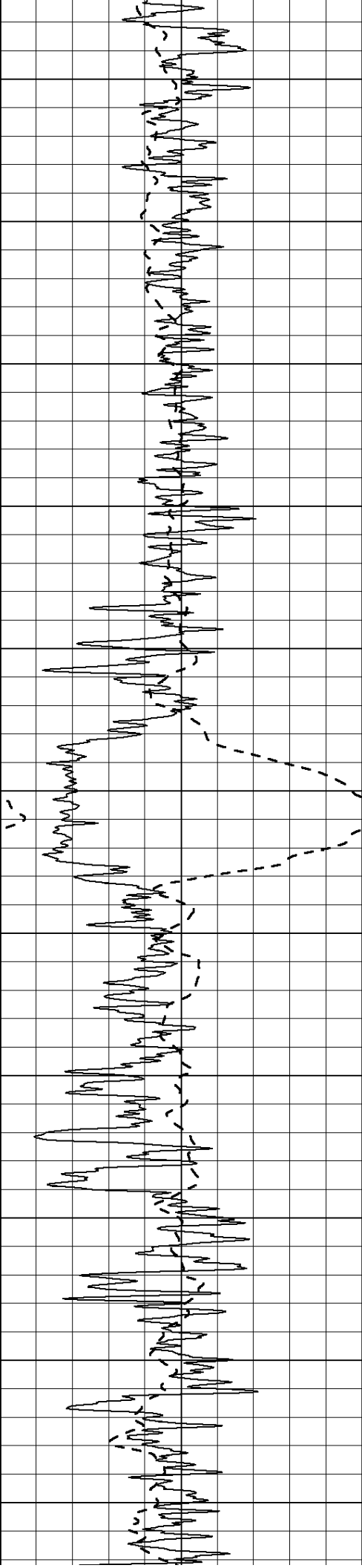
1450

1500

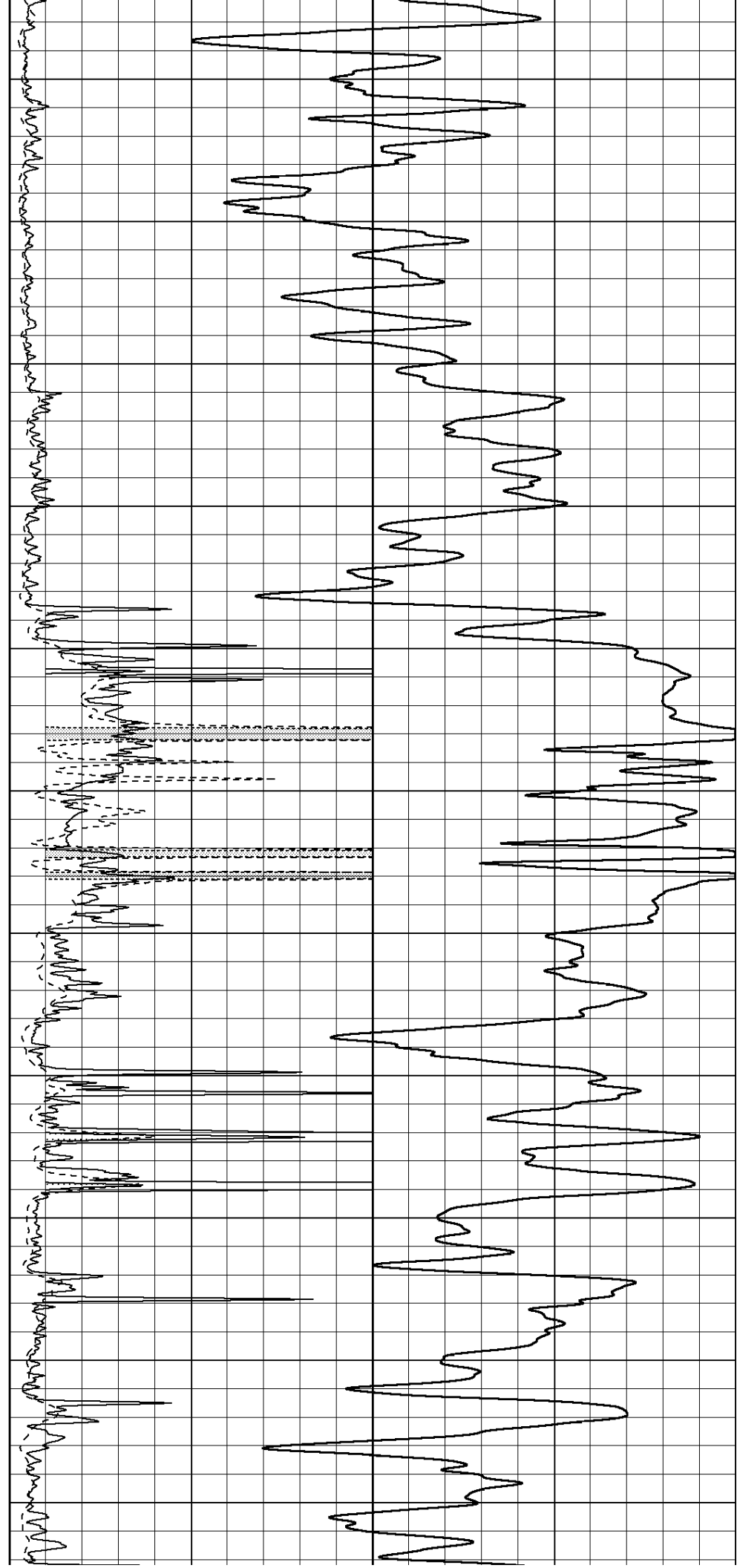
1550

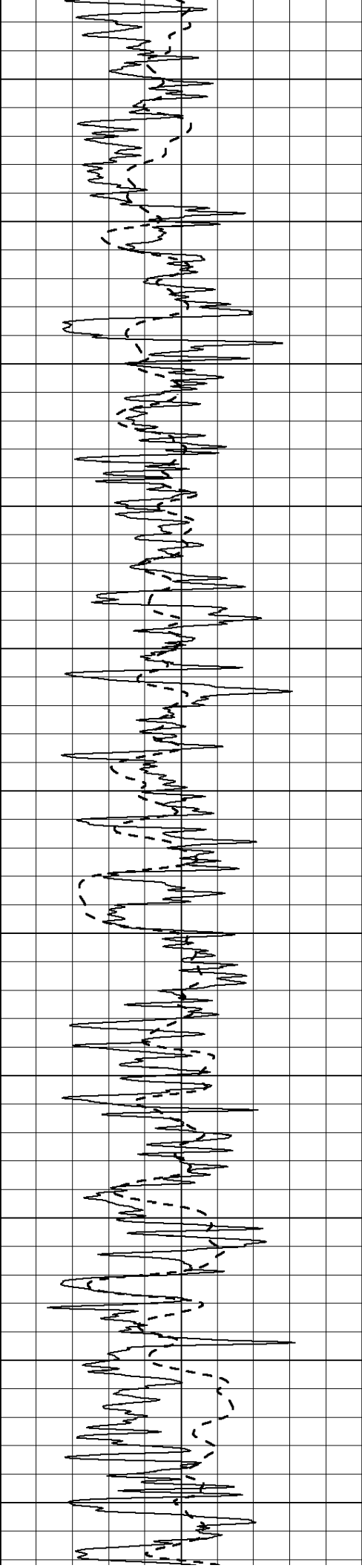






2150  
2200  
2250  
2300  
2350  
2400  
2450  
2500  
2550  
2600  
2650





2700

2750

2800

2850

2900

2950

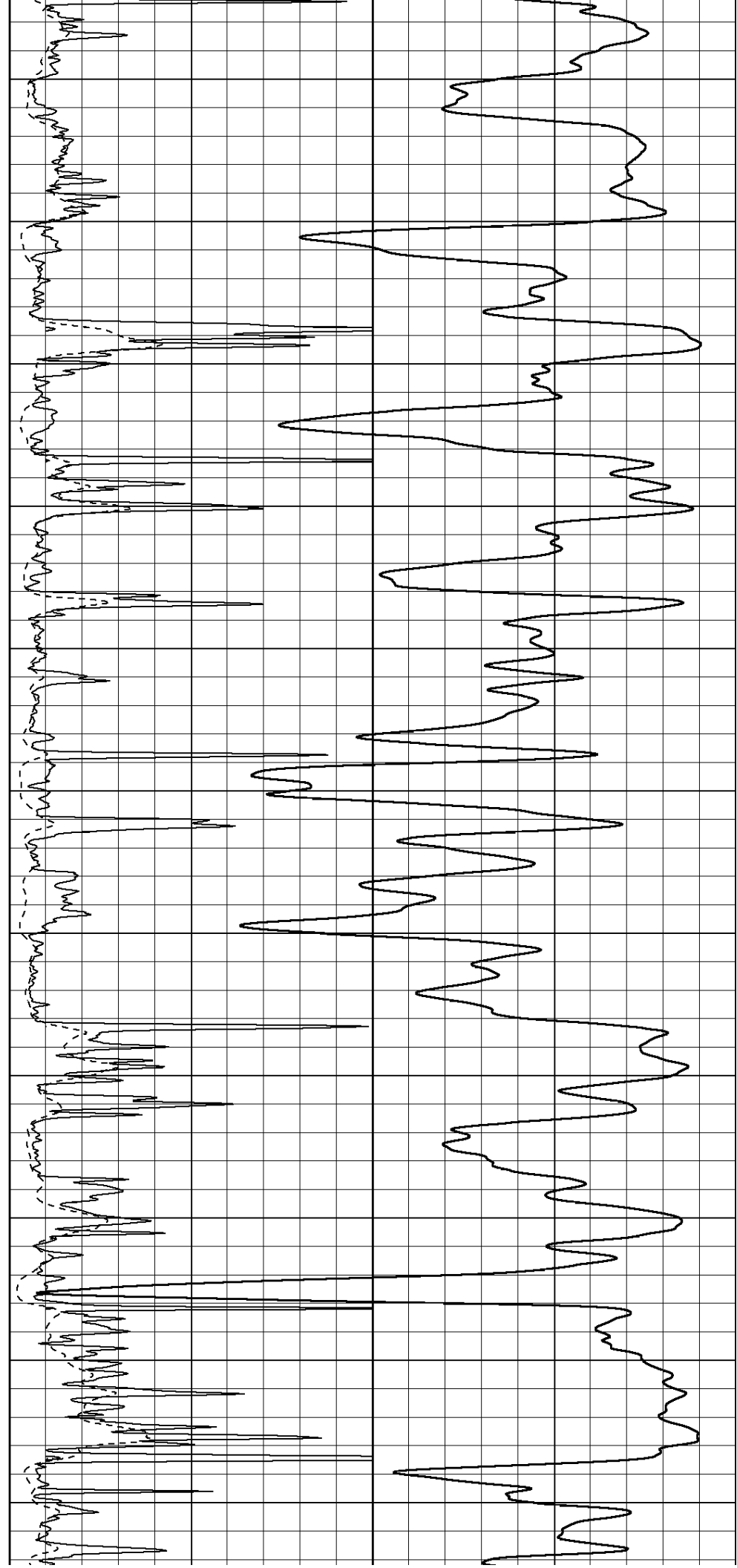
3000

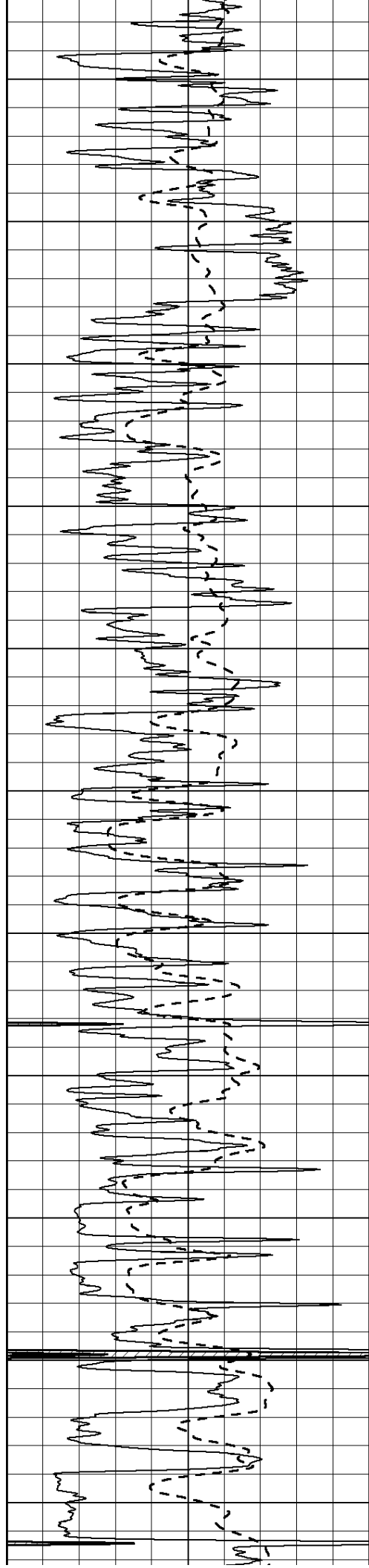
3050

3100

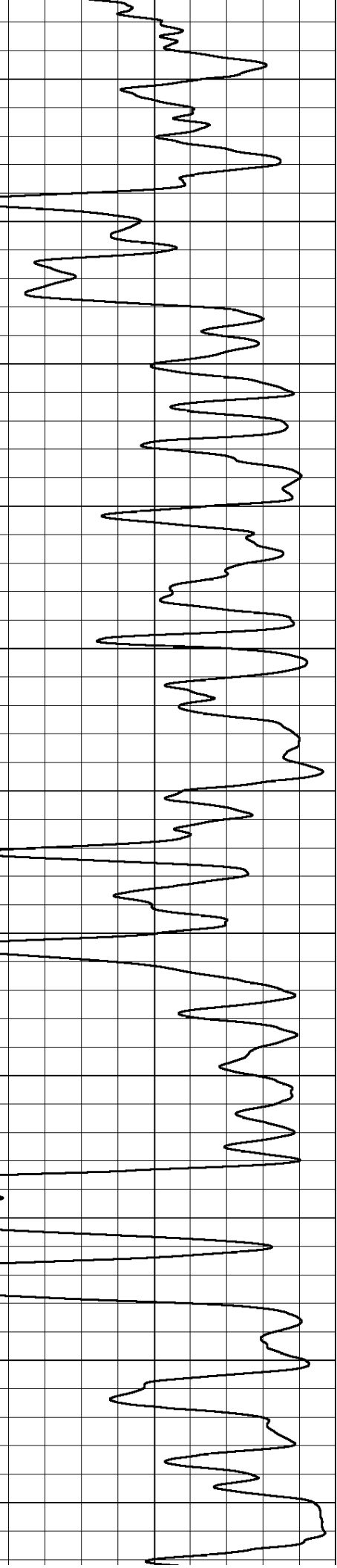
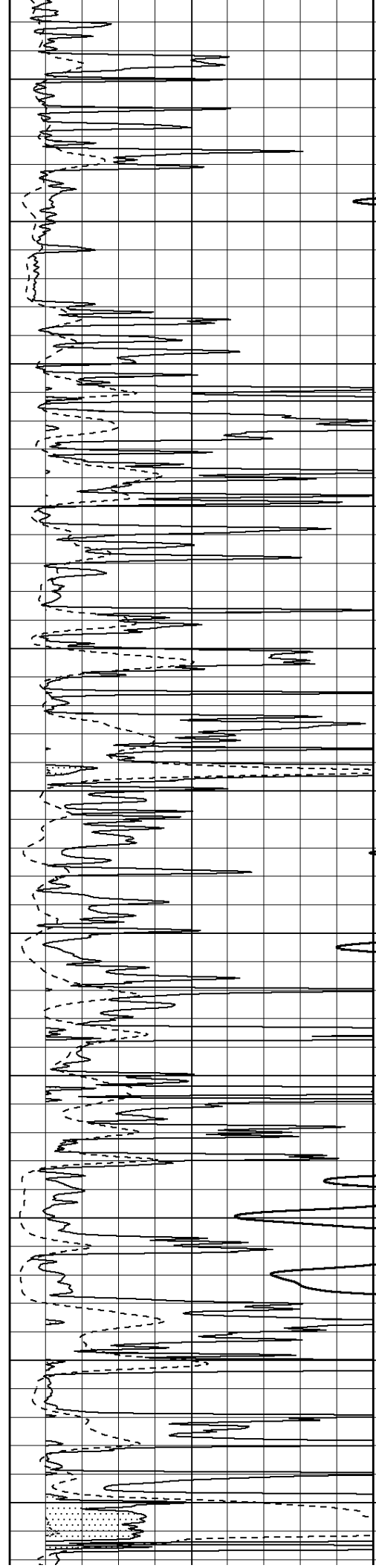
3150

3200

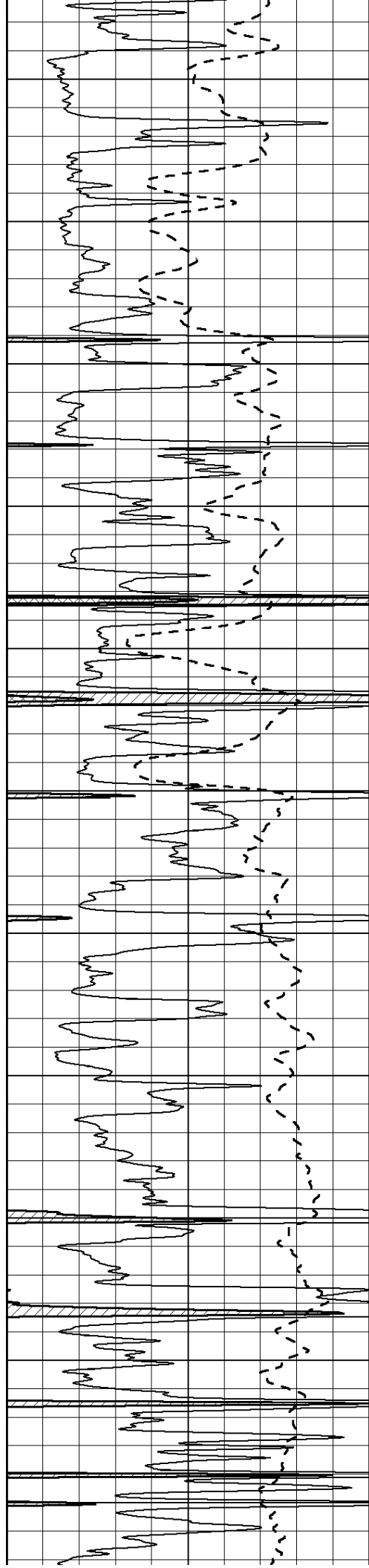




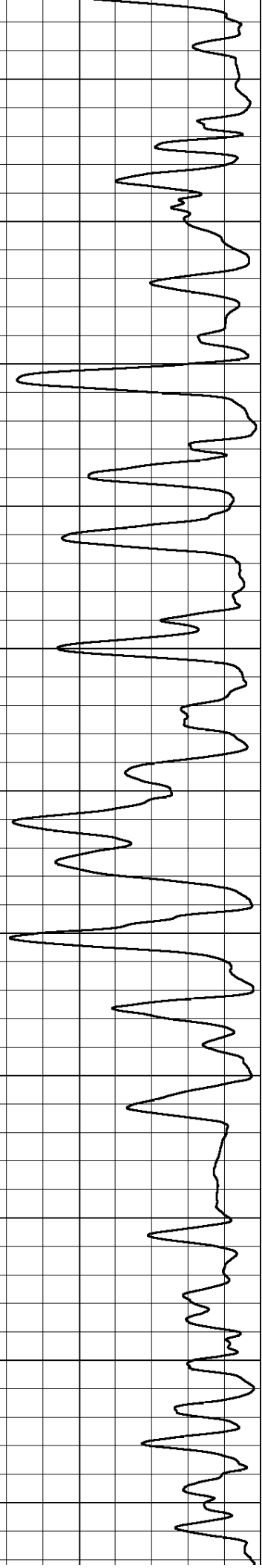
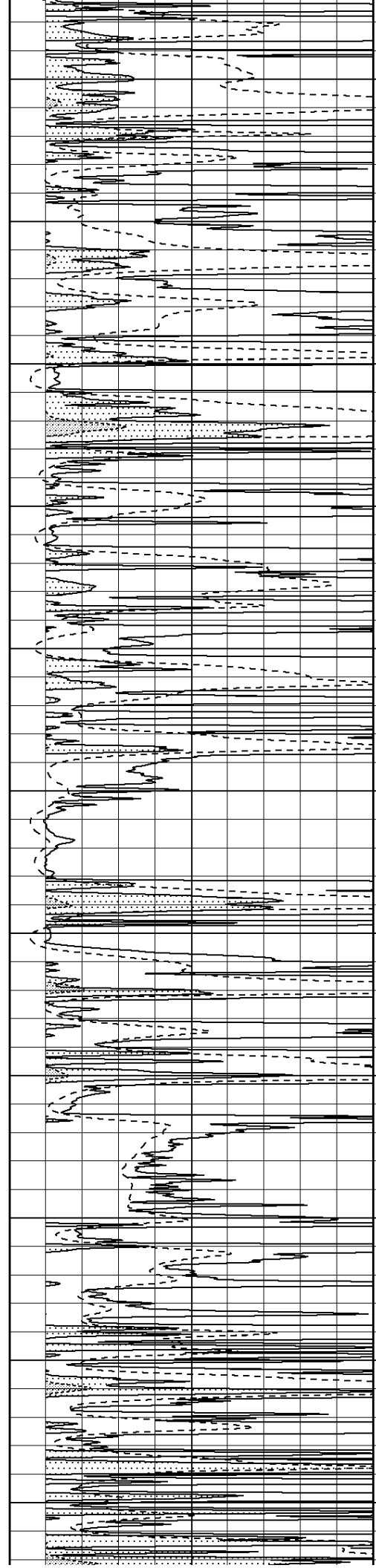
3250  
3300  
3350  
3400  
3450  
3500  
3550  
3600  
3650  
3700  
3750

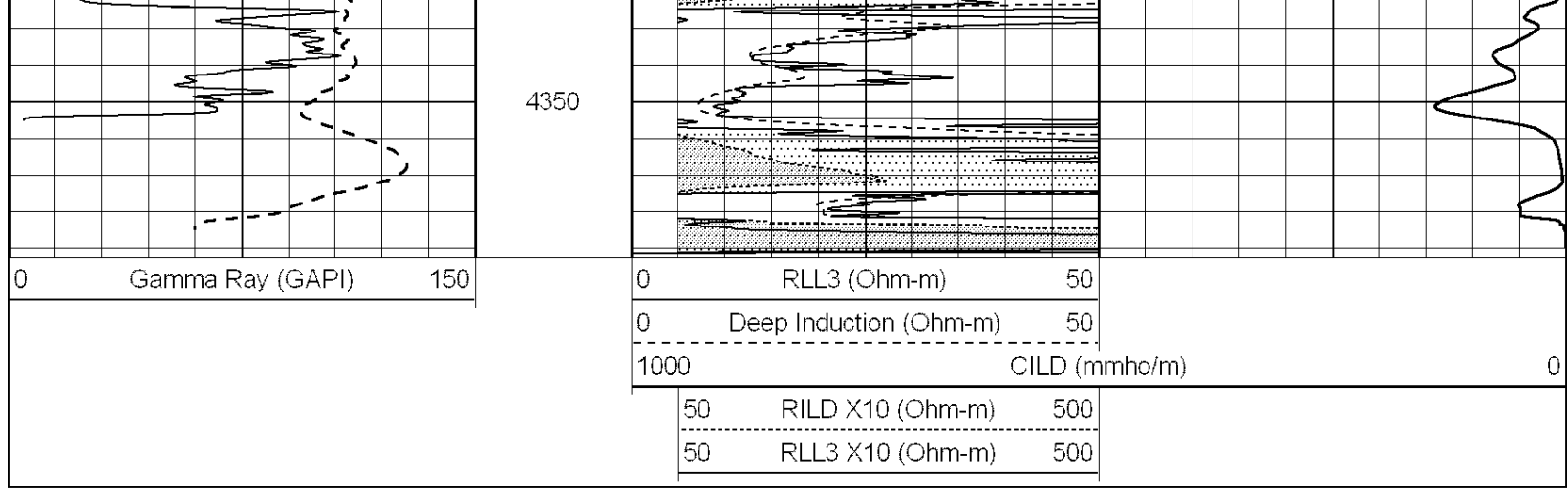






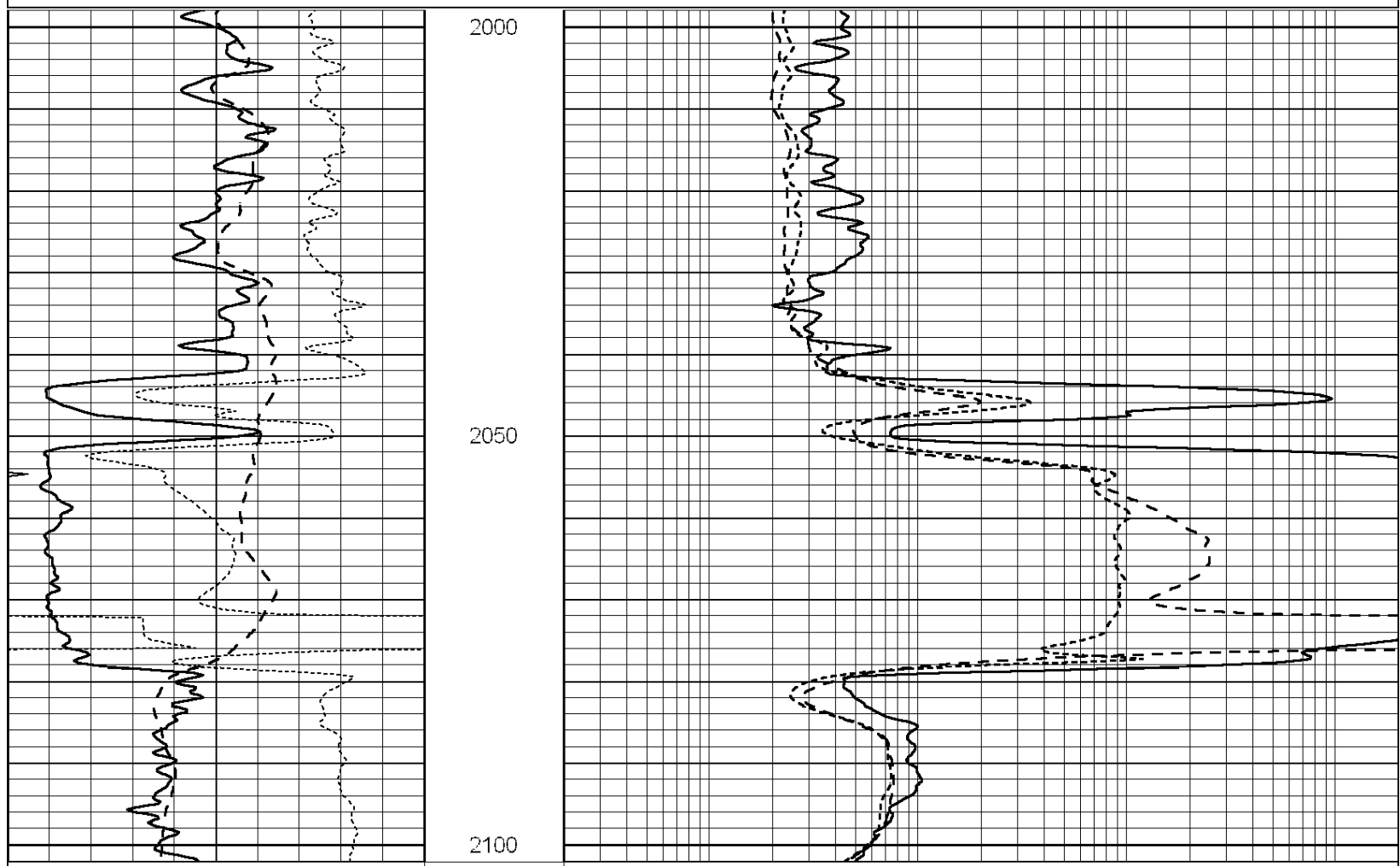
3800  
3850  
3900  
3950  
4000  
4050  
4100  
4150  
4200  
4250  
4300





Database File: 23924ddn.db  
 Dataset Pathname: pass4.3  
 Presentation Format: \_dil  
 Dataset Creation: Mon Mar 24 11:30:50 2014 by Calc Open-Cased 090629  
 Charted by: Depth in Feet scaled 1:240

0	GAMMA RAY (GAPI)	150	0.2	RLL3 (Ohm-m)	2000
-100	SP (mV)	100	0.2	DEEP INDUCTION (Ohm-m)	2000
-250	RxoRt	50	0.2	MEDIUM INDUCTION (Ohm-m)	2000
0	MINMK	20			



0	GAMMA RAY (GAPI)	150	0.2	RLL3 (Ohm-m)	2000
-100	SP (mV)	100	0.2	DEEP INDUCTION (Ohm-m)	2000
-250	RxoRt	50	0.2	MEDIUM INDUCTION (Ohm-m)	2000

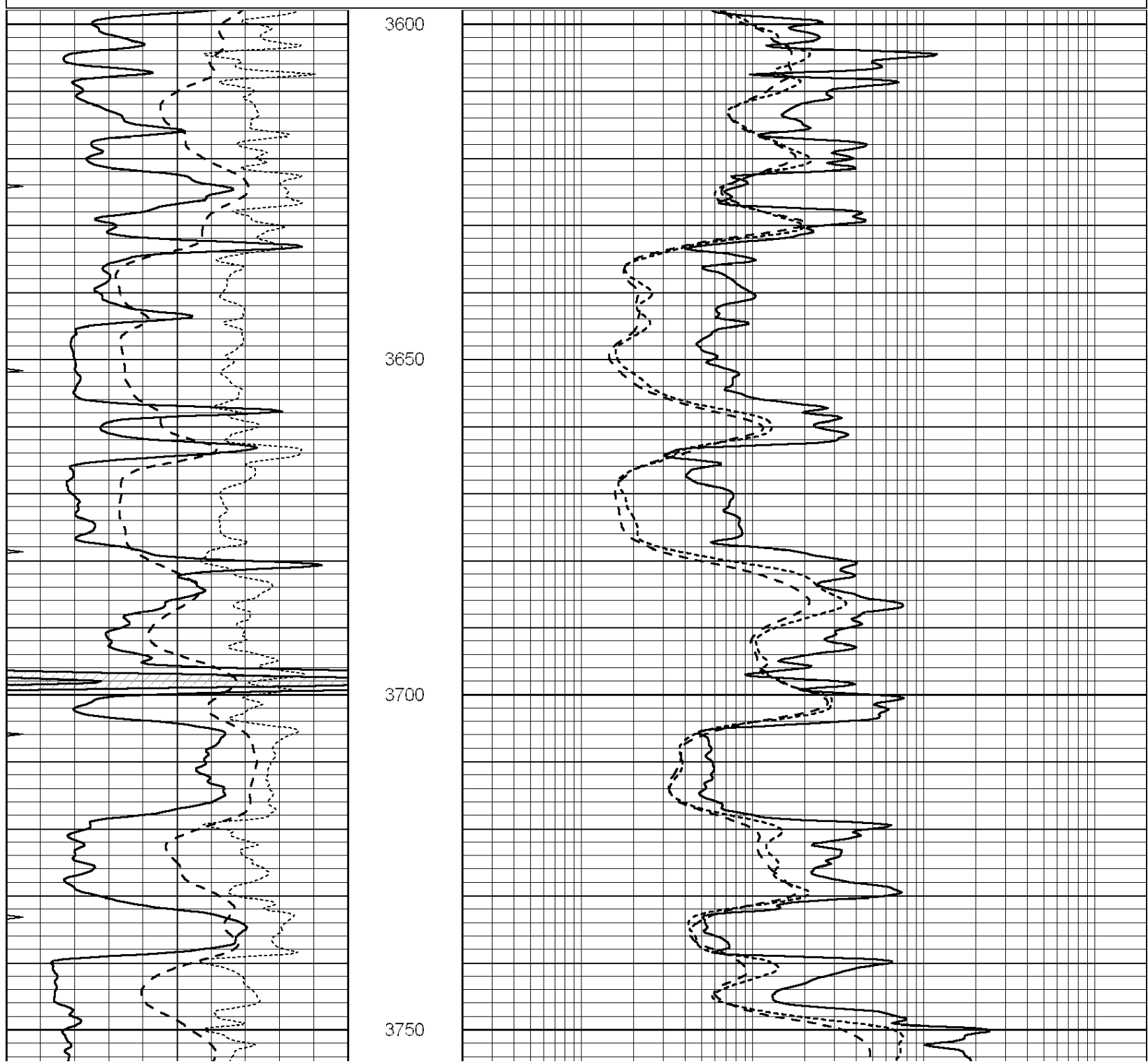
0	MINMK	20
---	-------	----

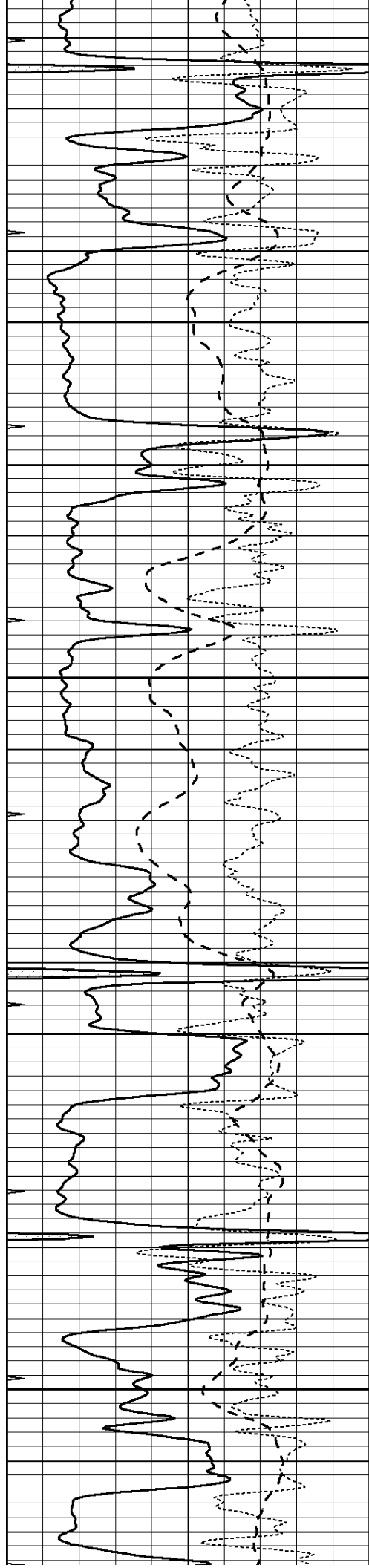
0.2	MEDIUM INDUCTION (Ohm-m)	2000
-----	--------------------------	------

Database File: 23924ddh.db  
 Dataset Pathname: pass4.2  
 Presentation Format: \_dil  
 Dataset Creation: Mon Mar 24 10:53:42 2014 by Calc Open-Cased 090629  
 Charted by: Depth in Feet scaled 1:240

0	GAMMA RAY (GAPI)	150
-100	SP (mV)	100
-250	RxoRt	50
0	MINMK	20

0.2	RLL3 (Ohm-m)	2000
0.2	DEEP INDUCTION (Ohm-m)	2000
0.2	MEDIUM INDUCTION (Ohm-m)	2000



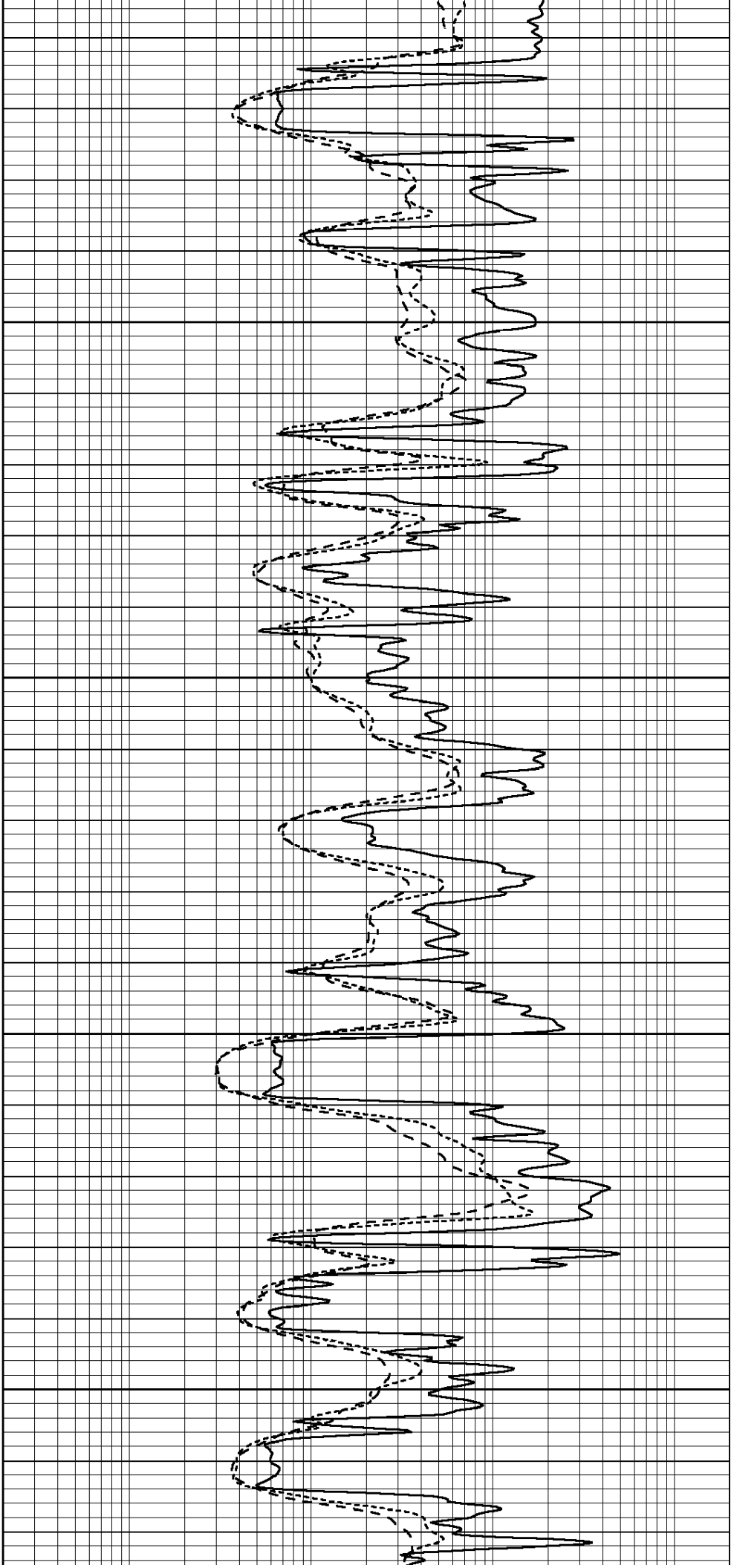


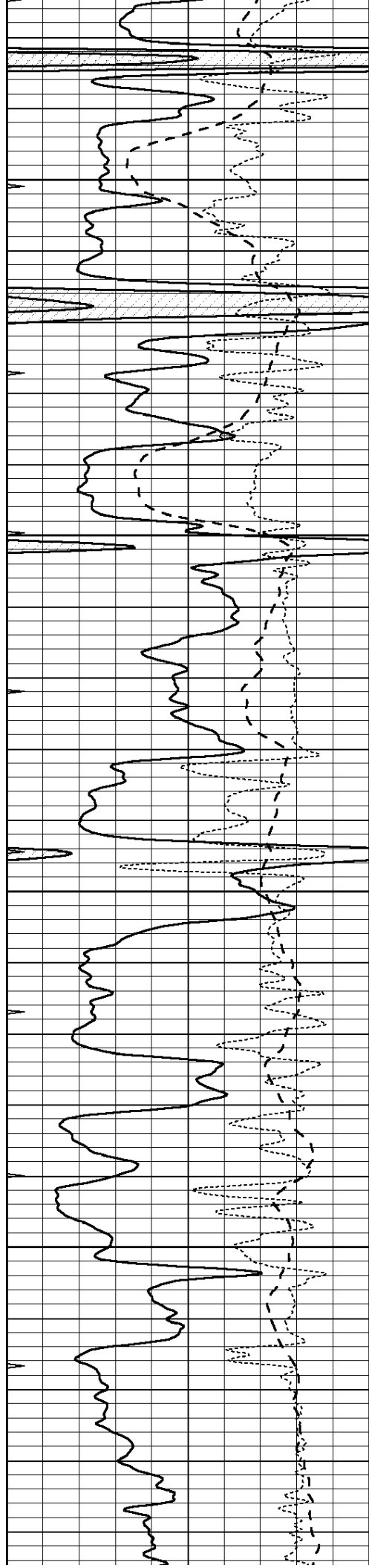
3800

3850

3900

3950



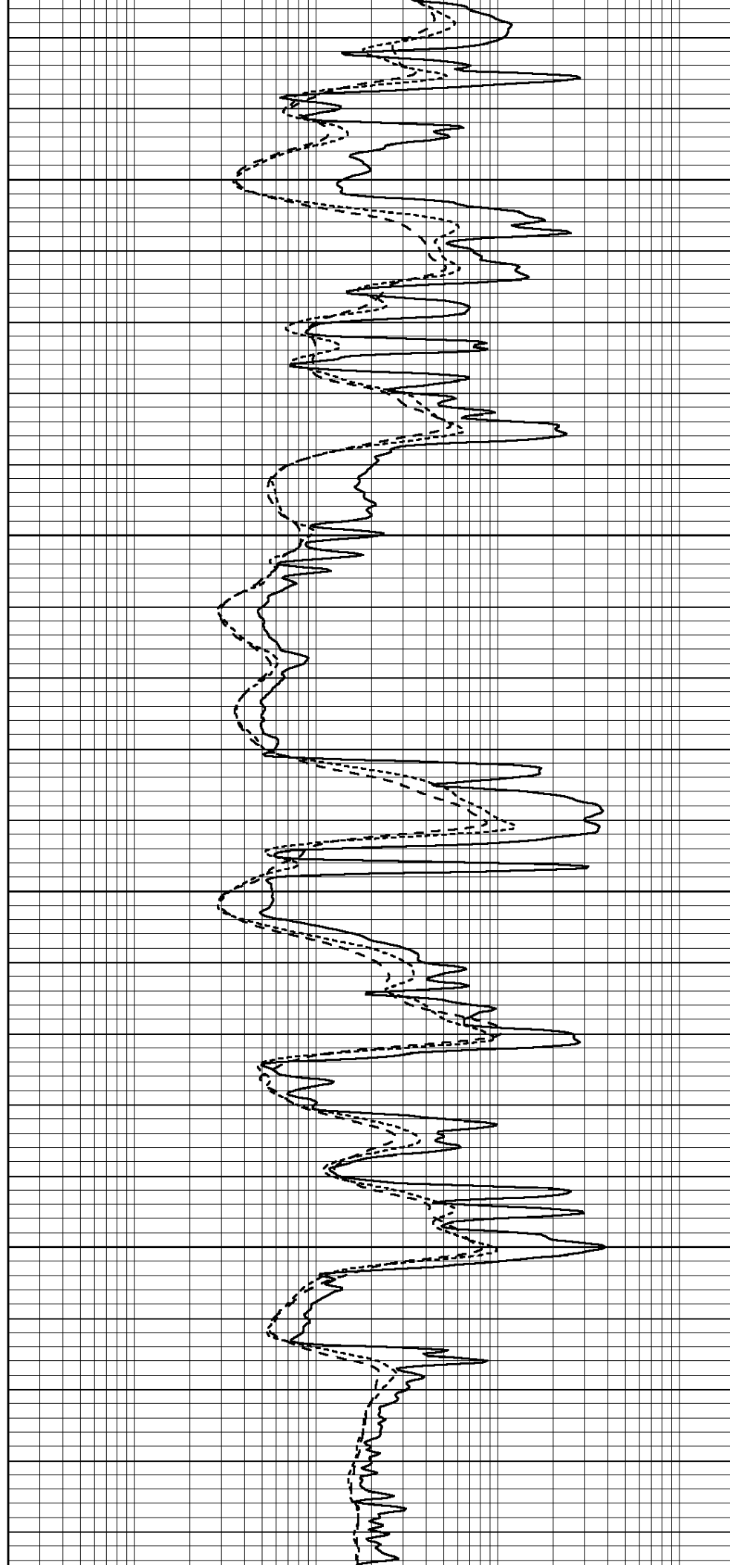


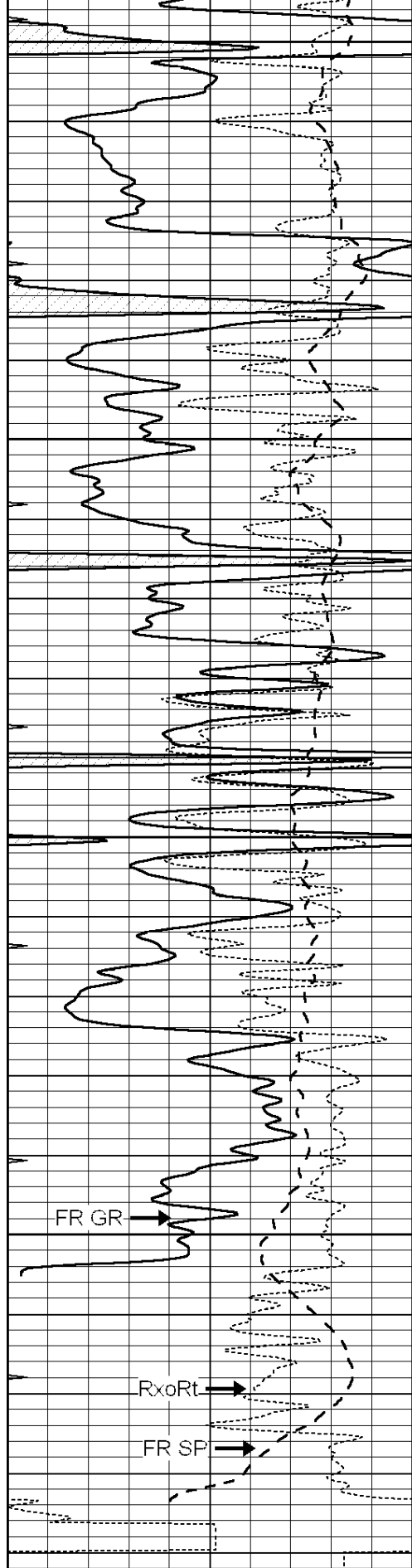
4000

4050

4100

4150





4200

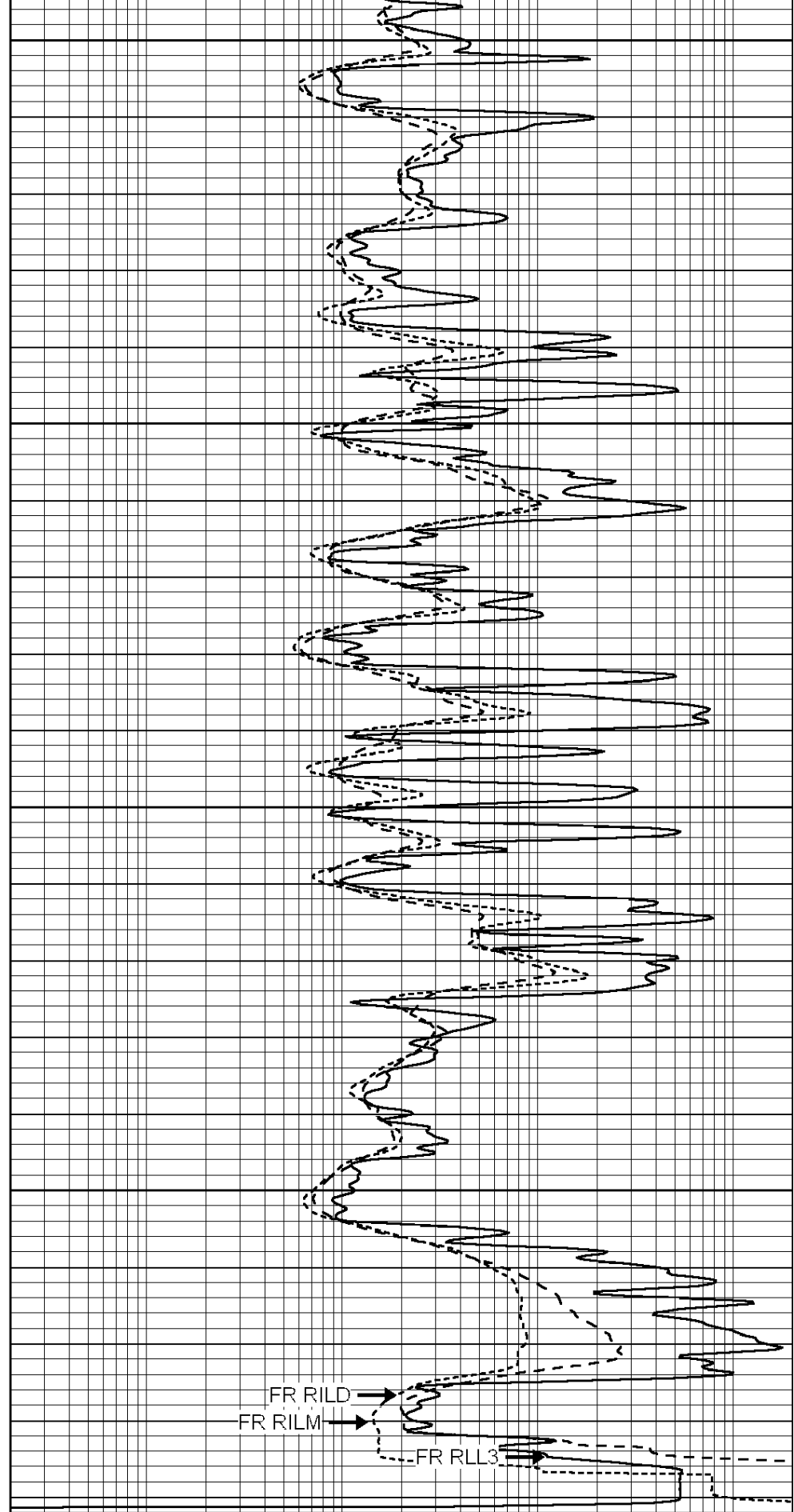
4250

4300

4350

LTD 4387

0	GAMMA RAY (GAPI)	150
-100	SP (mV)	100
-250	RxoRt	50
0	MINMK	20



0.2	RLL3 (Ohm-m)	2000
0.2	DEEP INDUCTION (Ohm-m)	2000
0.2	MEDIUM INDUCTION (Ohm-m)	2000



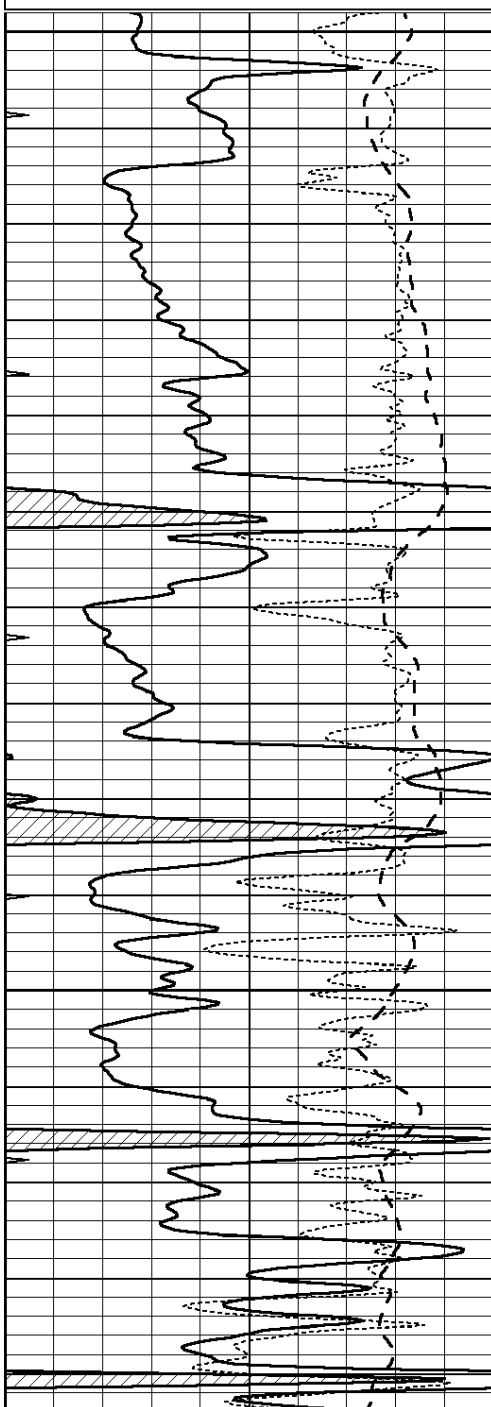
**COMPLETION  
& PRODUCTION  
SERVICES CO.**

# REPEAT SECTION

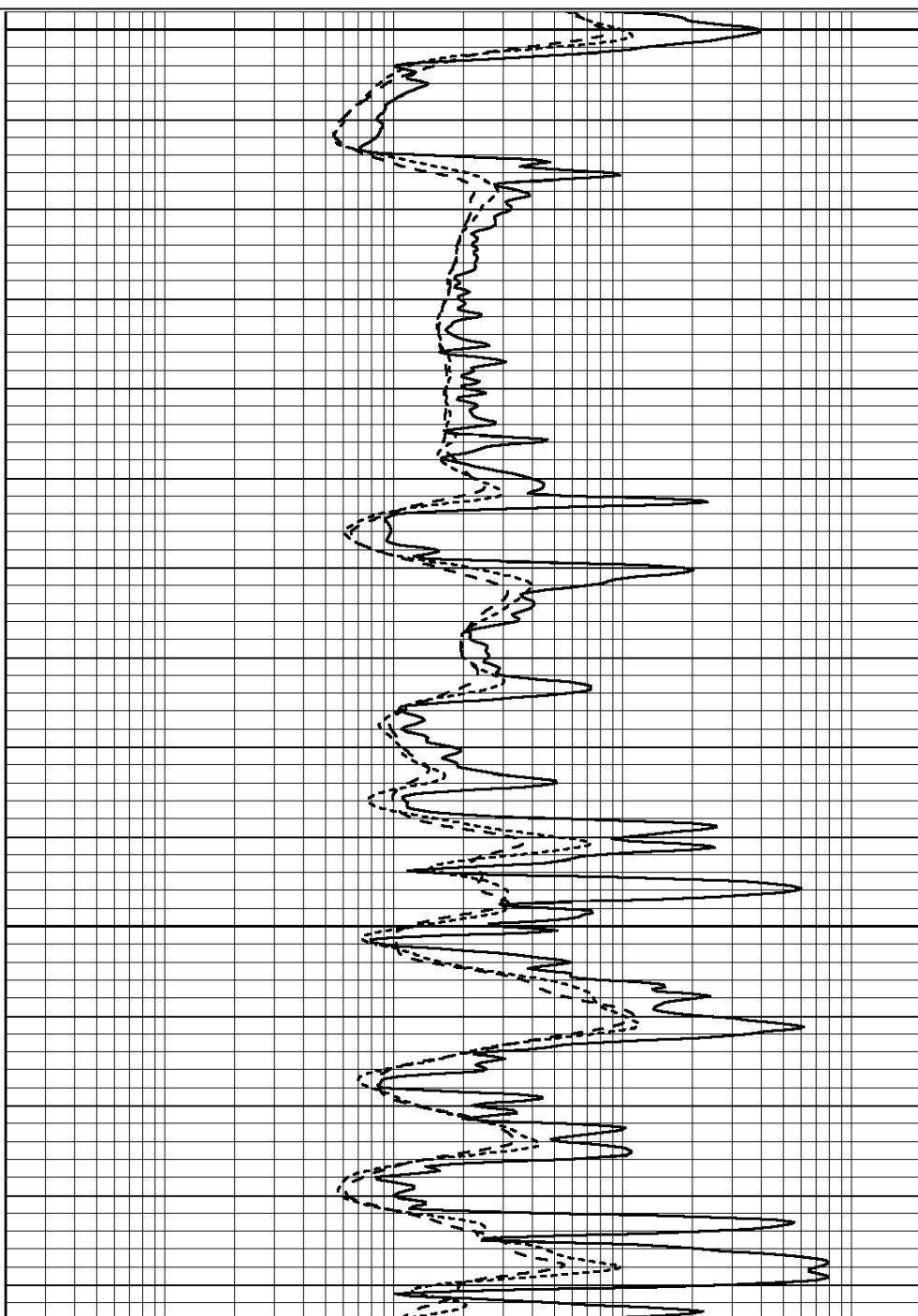
Database File: 23924ddn.db  
Dataset Pathname: pass3.2  
Presentation Format: \_dil  
Dataset Creation: Mon Mar 24 10:21:08 2014 by Calc Open-Cased 090629  
Charted by: Depth in Feet scaled 1:240

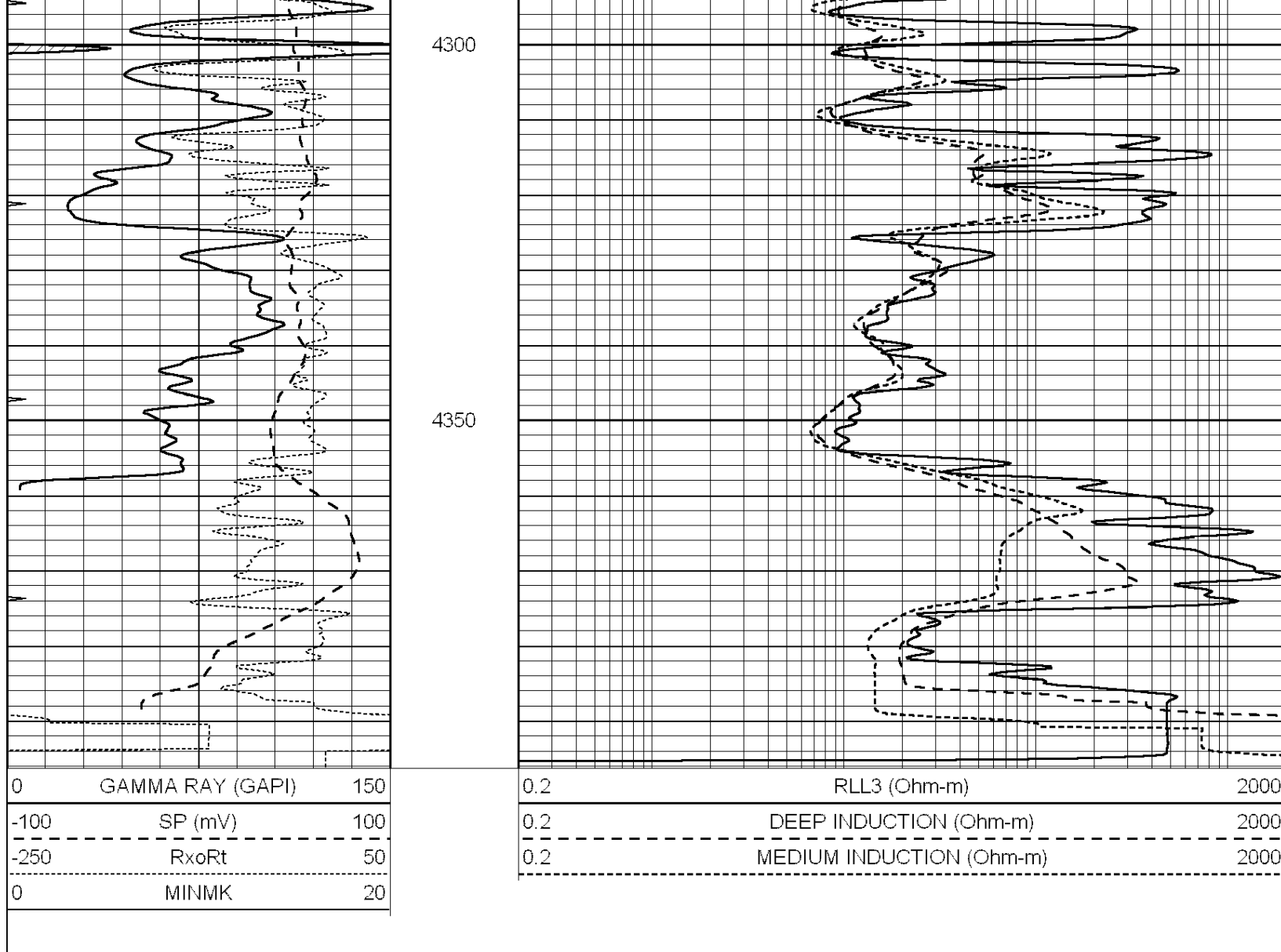
0	GAMMA RAY (GAPI)	150
-100	SP (mV)	100
-250	RxoRt	50
0	MINMK	20

0.2	RLL3 (Ohm-m)	2000
0.2	DEEP INDUCTION (Ohm-m)	2000
0.2	MEDIUM INDUCTION (Ohm-m)	2000



4150  
4200  
4250





### Calibration Report

Database File: 23924ddn.db  
 Dataset Pathname: pass4.3  
 Dataset Creation: Mon Mar 24 11:30:50 2014 by Calc Open-Cased 090629

### Dual Induction Calibration Report

Serial-Model: DIL3-GEAR  
 Performed: Wed Mar 05 17:42:55 2014

Loop:	Readings				References		Results	
	Air	Loop			Air	Loop	m	b
Deep	0.011	0.656	V	0.000	400.000	mmho/m	500.000	4.000
Medium	0.013	0.740	V	0.000	462.500	mmho/m	570.000	3.000
Internal:	Zero	Cal		Zero	Cal		m	b
Deep	0.002	0.645	V	0.000	400.000	mmho/m	560.000	-1.071
Medium	0.007	0.740	V	0.000	462.500	mmho/m	540.000	-4.000

### Compensated Density Calibration Report

Serial-Model: GEAR1-GEARHART  
 Source / Verifier: 147 / 147  
 Master Calibration Performed: Wed Mar 05 16:50:17 2014



Master Calibration

	Density		Far Detector	Near Detector	
Magnesium	1.710	g/cc	1211.27	625.92	cps
Aluminum	2.600	g/cc	267.11	413.26	cps
Spine Angle = 74.64			Density/Spine Ratio = 0.568		
	Size		Reading		
Small Ring	8.20	in	5.18	V	
Large Ring	14.00	in	8.18	V	

Compensated Neutron Calibration Report

Serial Number: 080620  
 Tool Model: Probe

PRE-SURVEY VERIFICATION

Detector	Readings	Measured	Target
Short Space	cps		
Long Space	cps	pu	pu

POST-SURVEY VERIFICATION

Detector	Readings	Measured	Target
Short Space	cps		
Long Space	cps	pu	pu

Gamma Ray Calibration Report

Serial Number: 7  
 Tool Model: Probe1  
 Performed: Tue Mar 04 10:47:15 2014

Calibrator Value: 1.0 GAPI

Background Reading: 0.0 cps  
 Calibrator Reading: 1.0 cps

Sensitivity: 0.4500 GAPI/cps