

QUALITY OILWELL CEMENTING, INC.

Federal Tax I.D.# 20-2886107

Phone 785-483-2025
Cell 785-324-1041

Home Office P.O. Box 32 Russell, KS 67665

No. 010

Date	Sec.	Twp.	Range	County	State	On Location	Finish
4-3-14	27	6	20	Rooks	KS		8:00 p.m.

Location *13131st 24 7w 24 7N 21E*

Lease <i>McCue</i>	Well No. <i>1</i>	Owner
Contractor <i>WW #6</i>		To Quality Oilwell Cementing, Inc. You are hereby requested to rent cementing equipment and furnish cementer and helper to assist owner or contractor to do work as listed.
Type Job <i>Production String</i>		Charge To <i>Far Wells</i>
Hole Size <i>7 7/8</i>	T.D. <i>3730</i>	
Csg. <i>4 1/2</i>	Depth <i>3728</i>	Street
Tbg. Size	Depth	City State
Tool	Depth	The above was done to satisfaction and supervision of owner agent or contractor.
Cement Left in Csg. <i>16.87</i>	Shoe Joint <i>16.87</i>	Cement Amount Ordered <i>160 10/ Salt 5/ G/sonite</i>
Meas Line	Displace <i>574232</i>	<i>500 gal mud Chlor</i>

EQUIPMENT

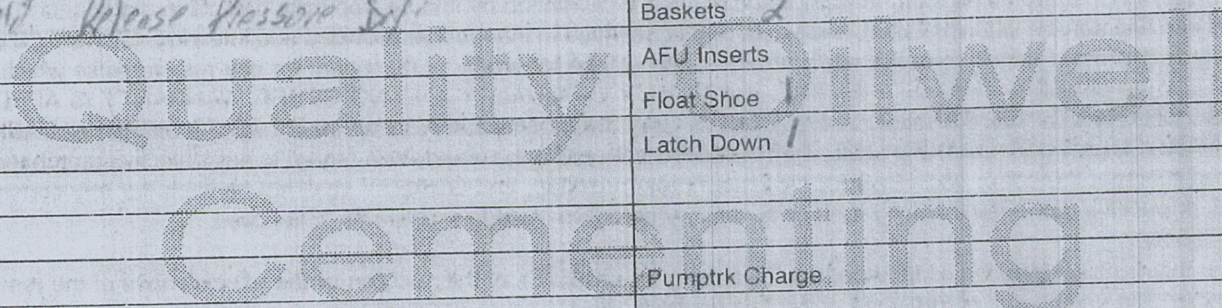
Pumptrk <i>18</i>	No.	Cementer <i>Coig</i>	Helper <i>Carl</i>	Common
Bulktrk	No.	Driver	Driver	Poz. Mix
Bulktrk <i>14</i>	No.	Driver <i>Lannc</i>	Driver	Gel.
				Calcium

JOB SERVICES & REMARKS

Remarks:	Hulls
Rat Hole <i>30SK</i>	Salt
Mouse Hole	Flowseal
Centralizers	Kol-Seal
Baskets	Mud CLR 48
D/V or Port Collar	CFL-117 or CD110 CAF 38
<i>4 1/2 size 3728 Insert 3711 test</i>	Sand
<i>Circulator on Pump 500 gal mud Chlor 1032</i>	Handling
<i>Special Cement Batch with 30SK</i>	Mileage
<i>Cement 4 1/2 with 130SK</i>	
<i>D. Displace Plug. Plugwide 1500</i>	
<i>Hold Release Pressure 8 1/2</i>	

FLOAT EQUIPMENT

Guide Shoe <i>4 1/2</i>
Centralizer <i>5 Turbo's</i>
Baskets <i>2</i>
AFU Inserts
Float Shoe <i>1</i>
Latch Down <i>1</i>



Pumptrk Charge	Tax
Mileage	Discount
	Total Charge

X Signature