



**TRILOBITE
TESTING, INC**

DRILL STEM TEST REPORT

O'Brien Resources LLC

4-19s-17w Rush

PO Box 6149
Shreveport, LA 71136-6149

Vondracek #4

Job Ticket: 58847

DST#: 1

ATTN: Steve Harris, Kurt Ta

Test Start: 2014.08.25 @ 01:55:15

GENERAL INFORMATION:

Formation: **LKC "B"**
 Deviated: No Whipstock: ft (KB)
 Test Type: Conventional Bottom Hole (Initial)
 Time Tool Opened: 04:56:40
 Tester: Ray Schwager
 Time Test Ended: 09:52:09
 Unit No: 70
 Interval: **3503.00 ft (KB) To 3550.00 ft (KB) (TVD)**
 Reference Elevations: 2111.00 ft (KB)
 Total Depth: 3550.00 ft (KB) (TVD)
 2102.00 ft (CF)
 Hole Diameter: 7.85 inches
 Hole Condition: Fair
 KB to GR/CF: 9.00 ft

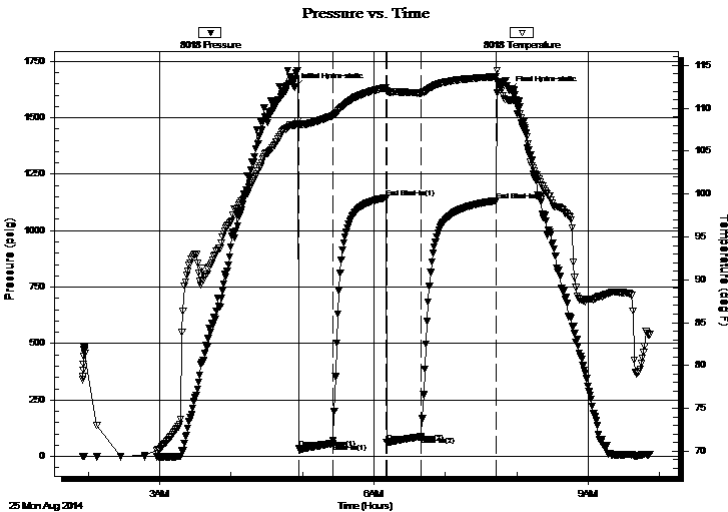
Serial #: 8018

Inside

Press@RunDepth: 87.77 psig @ 3514.00 ft (KB) Capacity: 8000.00 psig
 Start Date: 2014.08.25 End Date: 2014.08.25 Last Calib.: 2014.08.25
 Start Time: 01:55:15 End Time: 09:52:09 Time On Btm: 2014.08.25 @ 04:53:10
 Time Off Btm: 2014.08.25 @ 07:53:40

TEST COMMENT: 30-IFP-strg bl thru-out
 45-ISIP-vy w k surface bl bk
 30-FFP-strg bl in 1 min
 45-FSIP-1 1/2"bl bk

PRESSURE SUMMARY



Time (Min.)	Pressure (psig)	Temp (deg F)	Annotation
0	1634.18	108.01	Initial Hydro-static
4	37.50	108.13	Open To Flow (1)
32	58.02	109.13	Shut-In(1)
77	1143.60	112.42	End Shut-In(1)
78	63.91	112.03	Open To Flow (2)
107	87.77	111.79	Shut-In(2)
170	1132.87	113.69	End Shut-In(2)
181	1619.47	110.95	Final Hydro-static

Recovery

Length (ft)	Description	Volume (bbl)
0.00	1270'GIP	0.00
30.00	GCM 10%G90%M w /show of oil	0.42
120.00	MW 20%M80%W	1.68

Gas Rates

	Choke (inches)	Pressure (psig)	Gas Rate (Mcf/d)



**TRILOBITE
TESTING, INC**

DRILL STEM TEST REPORT

FLUID SUMMARY

O'Brien Resources LLC

4-19s-17w Rush

PO Box 6149
Shreveport, LA 71136-6149

Vondracek #4

Job Ticket: 58847

DST#: 1

ATTN: Steve Harris, Kurt Ta

Test Start: 2014.08.25 @ 01:55:15

Mud and Cushion Information

Mud Type: Gel Chem
Mud Weight: 9.00 lb/gal
Viscosity: 60.00 sec/qt
Water Loss: 8.73 in³
Resistivity: ohm.m
Salinity: 6200.00 ppm
Filter Cake: 1.00 inches

Cushion Type:
Cushion Length: ft
Cushion Volume: bbl
Gas Cushion Type:
Gas Cushion Pressure: psig

Oil API: deg API
Water Salinity: 75000 ppm

Recovery Information

Recovery Table

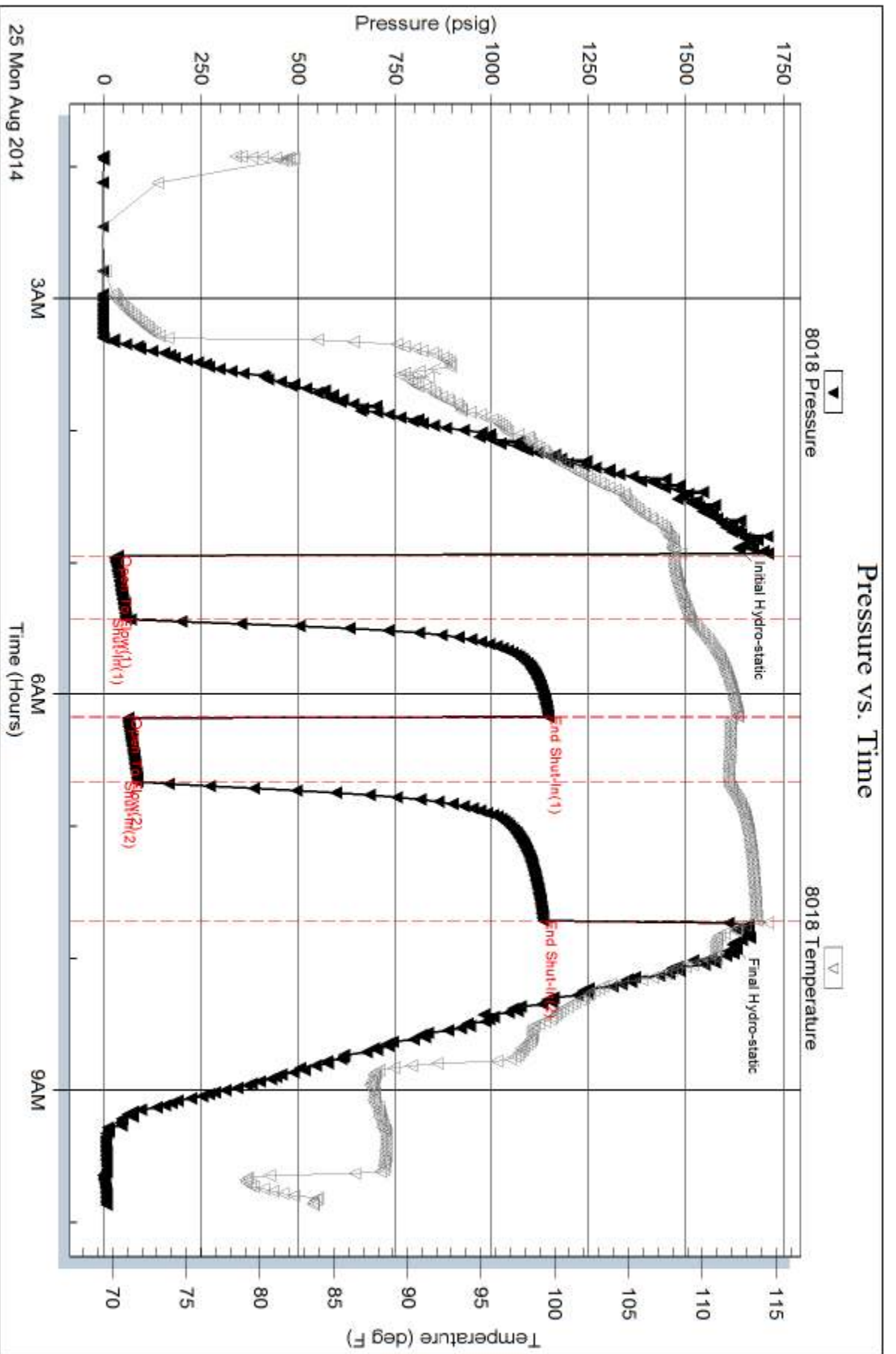
Length ft	Description	Volume bbl
0.00	1270'GIP	0.000
30.00	GCM 10%G90%M w /show of oil	0.421
120.00	MW 20%M80%W	1.683

Total Length: 150.00 ft Total Volume: 2.104 bbl

Num Fluid Samples: 0 Num Gas Bombs: 0 Serial #:

Laboratory Name: Laboratory Location:

Recovery Comments: RW .11 @ 65F





TRILOBITE TESTING, INC

DRILL STEM TEST REPORT

O'Brien Resources LLC

4-19s-17w Rush

PO Box 6149
Shreveport, LA 71136-6149

Vondracek #4

Job Ticket: 58848

DST#: 2

ATTN: Steve Harris, Kurt Ta

Test Start: 2014.08.26 @ 17:40:55

GENERAL INFORMATION:

Formation: **Arbuckle**

Deviated: No Whipstock: ft (KB)

Time Tool Opened: 19:45:00

Time Test Ended: 22:47:19

Test Type: Conventional Bottom Hole (Reset)

Tester: Ray Schwager

Unit No: 70

Interval: 3823.00 ft (KB) To 3856.00 ft (KB) (TVD)

Reference Elevations: 2111.00 ft (KB)

Total Depth: 3856.00 ft (KB) (TVD)

2102.00 ft (CF)

Hole Diameter: 7.85 inches Hole Condition: Fair

KB to GR/CF: 9.00 ft

Serial #: 8018 Inside

Press@RunDepth: psig @ 3829.00 ft (KB)

Capacity: 8000.00 psig

Start Date: 2014.08.26

End Date:

2014.08.26

Last Calib.:

2014.08.26

Start Time: 17:40:55

End Time:

22:47:19

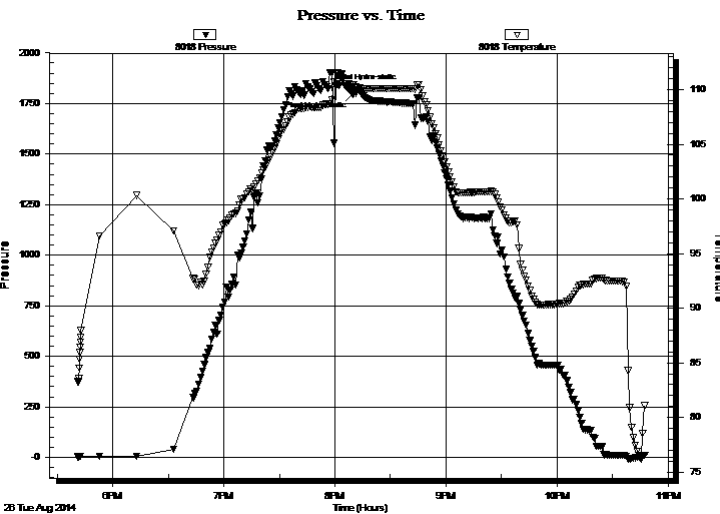
Time On Btm:

2014.08.26 @ 19:56:20

Time Off Btm:

2014.08.26 @ 20:09:50

TEST COMMENT: no packer seat , set twice , did not hold



PRESSURE SUMMARY

Time (Min.)	Pressure (psig)	Temp (deg F)	Annotation
0	1823.83	108.67	Initial Hydro-static
14	1797.22	110.47	Final Hydro-static

Recovery

Length (ft)	Description	Volume (bbl)
220.00	mud	3.09

* Recovery from multiple tests

Gas Rates

Choke (inches)	Pressure (psig)	Gas Rate (Mcf/d)



**TRILOBITE
TESTING, INC**

DRILL STEM TEST REPORT

FLUID SUMMARY

O'Brien Resources LLC

4-19s-17w Rush

PO Box 6149
Shreveport, LA 71136-6149

Vondracek #4

Job Ticket: 58848

DST#: 2

ATTN: Steve Harris, Kurt Ta

Test Start: 2014.08.26 @ 17:40:55

Mud and Cushion Information

Mud Type: Gel Chem

Cushion Type:

Oil API:

deg API

Mud Weight: 9.00 lb/gal

Cushion Length:

ft

Water Salinity:

ppm

Viscosity: 51.00 sec/qt

Cushion Volume:

bbbl

Water Loss: 12.37 in³

Gas Cushion Type:

Resistivity: ohm.m

Gas Cushion Pressure:

psig

Salinity: 8000.00 ppm

Filter Cake: 1.00 inches

Recovery Information

Recovery Table

Length ft	Description	Volume bbl
220.00	mud	3.086

Total Length: 220.00 ft Total Volume: 3.086 bbl

Num Fluid Samples: 0

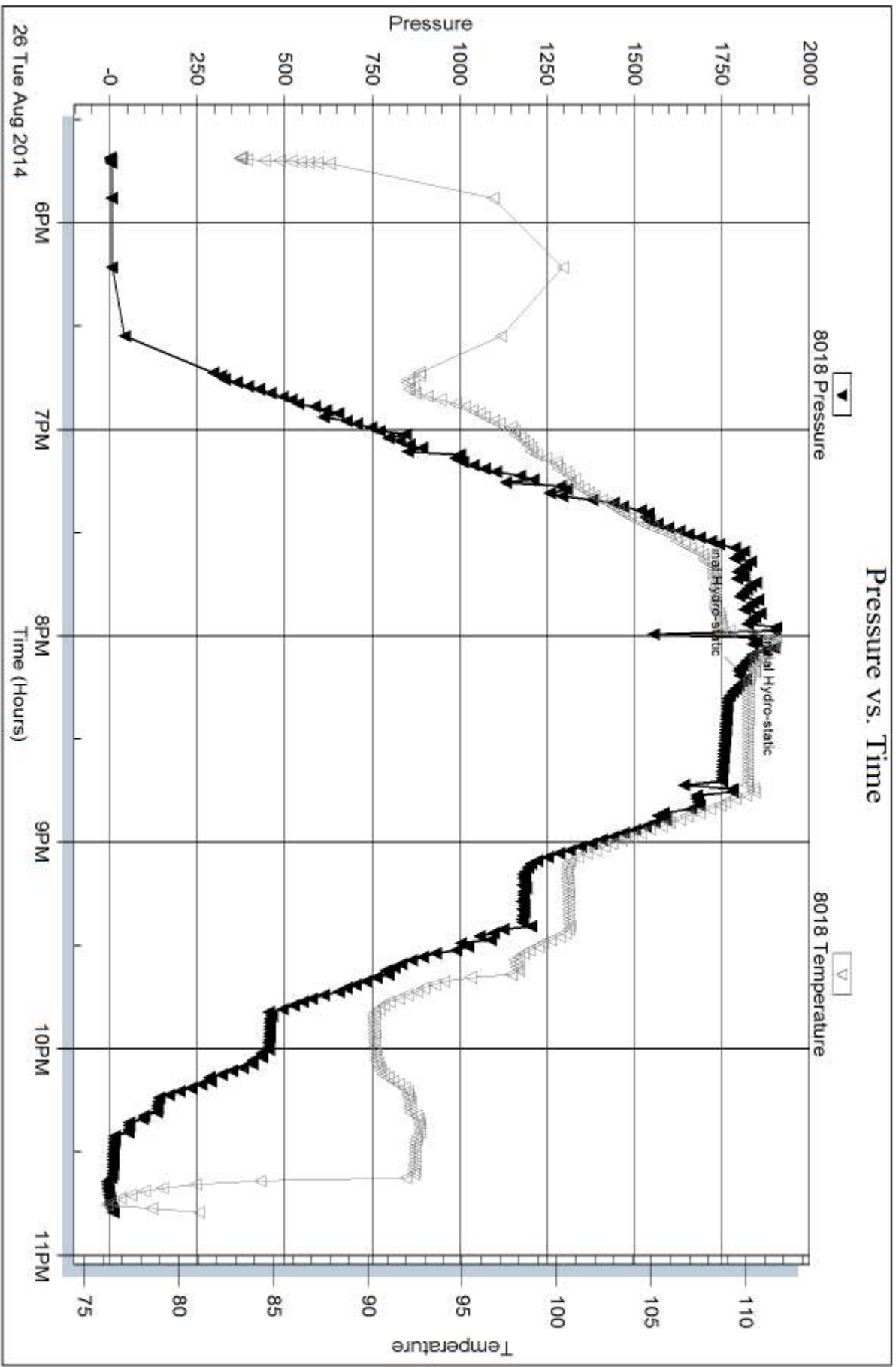
Num Gas Bombs: 0

Serial #:

Laboratory Name:

Laboratory Location:

Recovery Comments:





TRILOBITE TESTING, INC

DRILL STEM TEST REPORT

O'Brien Resources LLC

4-19s-17w Rush

PO Box 6149
Shreveport, LA 71136-6149

Vondracek #4

Job Ticket: 58849

DST#: 3

ATTN: Steve Harris, Kurt Ta

Test Start: 2014.08.27 @ 03:30:26

GENERAL INFORMATION:

Formation: **Arbuckle**

Deviated: No Whipstock: ft (KB)

Time Tool Opened: 05:57:51

Time Test Ended: 10:31:20

Test Type: Conventional Bottom Hole (Reset)

Tester: Ray Schwager

Unit No: 70

Interval: 3750.00 ft (KB) To 3856.00 ft (KB) (TVD)

Reference Elevations: 2111.00 ft (KB)

Total Depth: 3856.00 ft (KB) (TVD)

2102.00 ft (CF)

Hole Diameter: 7.85 inches Hole Condition: Fair

KB to GR/CF: 9.00 ft

Serial #: 8018 Inside

Press@RunDepth: 36.45 psig @ 3759.00 ft (KB)

Capacity: 8000.00 psig

Start Date: 2014.08.27 End Date: 2014.08.27

Last Calib.: 2014.08.27

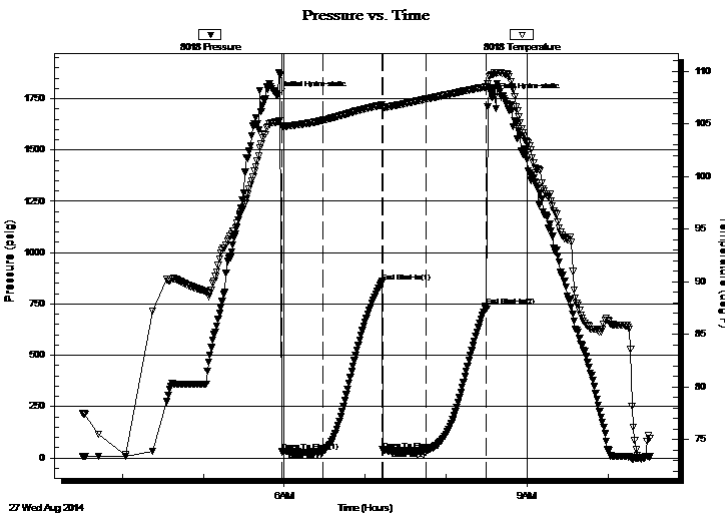
Start Time: 03:30:26 End Time: 10:31:20

Time On Btm: 2014.08.27 @ 05:54:51

Time Off Btm: 2014.08.27 @ 08:34:20

TEST COMMENT: 30-IFP-w k bl thru-out 1"bl
45-ISIP-no bl bl
30-FFP-w k bl thru-out , surface to 1/8"bl
45-FSIP-no bl

PRESSURE SUMMARY



Time (Min.)	Pressure (psig)	Temp (deg F)	Annotation
0	1764.84	105.22	Initial Hydro-static
3	33.42	104.84	Open To Flow (1)
34	33.08	105.37	Shut-In(1)
78	859.44	106.82	End Shut-In(1)
79	37.73	106.60	Open To Flow (2)
110	36.45	107.37	Shut-In(2)
155	738.06	108.54	End Shut-In(2)
160	1754.58	109.70	Final Hydro-static

Recovery

Length (ft)	Description	Volume (bbl)
1.00	CO	0.01
35.00	OCM 10%O90%M	0.49

* Recovery from multiple tests

Gas Rates

	Choke (inches)	Pressure (psig)	Gas Rate (Mcf/d)



**TRILOBITE
TESTING, INC**

DRILL STEM TEST REPORT

FLUID SUMMARY

O'Brien Resources LLC

4-19s-17w Rush

PO Box 6149
Shreveport, LA 71136-6149

Vondracek #4

Job Ticket: 58849

DST#: 3

ATTN: Steve Harris, Kurt Ta

Test Start: 2014.08.27 @ 03:30:26

Mud and Cushion Information

Mud Type: Gel Chem
Mud Weight: 9.00 lb/gal
Viscosity: 51.00 sec/qt
Water Loss: 12.35 in³
Resistivity: ohm.m
Salinity: 8000.00 ppm
Filter Cake: 1.00 inches

Cushion Type:
Cushion Length: ft
Cushion Volume: bbl
Gas Cushion Type:
Gas Cushion Pressure: psig

Oil API: deg API
Water Salinity: ppm

Recovery Information

Recovery Table

Length ft	Description	Volume bbl
1.00	CO	0.014
35.00	OCM 10%O90%M	0.491

Total Length: 36.00 ft Total Volume: 0.505 bbl

Num Fluid Samples: 0 Num Gas Bombs: 0 Serial #:

Laboratory Name: Laboratory Location:

Recovery Comments:

