

GEOLOGICAL REPORT

Larry A. Nicholson

Near 83 GPS Survey
88.0932334
-100.7112192

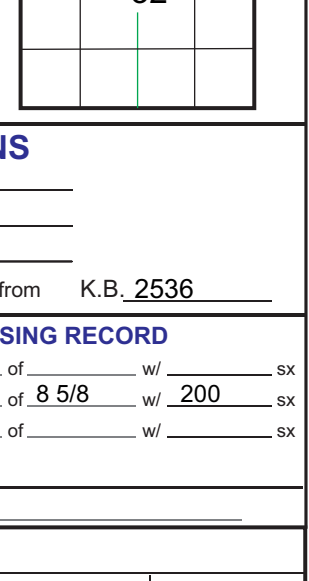
COMPANY & WELL: Cobalt Energy LLC Ritter 'A' #1-32
LOCATION: 335' FNL & 1200' FWL SE NE NW NW
SEC 32 TWP 33S R9E 26W
COUNTY Decatur STATE KS

COMPANY: Cobalt Energy LLC
API #: 15-039-21201 FIELD: n/a
LEASE: Ritter 'A' WELL #: #1-32
LOCATION: SE NE NW NW
SURVEY: 335' FNL & 1200' FWL
SECTION: 32 TWP 33S R9E 26W
COUNTY: Decatur STATE: Kansas

CONTRACTOR: Mufco Drilling Rig # 7
SPUD: 7-12-14 3:00 am COMP: ELEVATIONS
RTD: 4000' 4:25 am 7-19-14 LTD: 4002
MUD TYPE: Chemical, Morgan Mud G.L.: 2531
All measurements from K.B. 2536

SAMPLES SAVED FROM 3300 to RTD...
SAMPLES EXAMINED FROM 3300 to RTD...
GEOLOGICAL SUPERVISION FROM 3300 to RTD...
WELL SITE GEOLOGIST: LARRY A. NICHOLSON

ELECTRICAL SURVEYS: Pioneer, Den, Neu, Dual, Micro

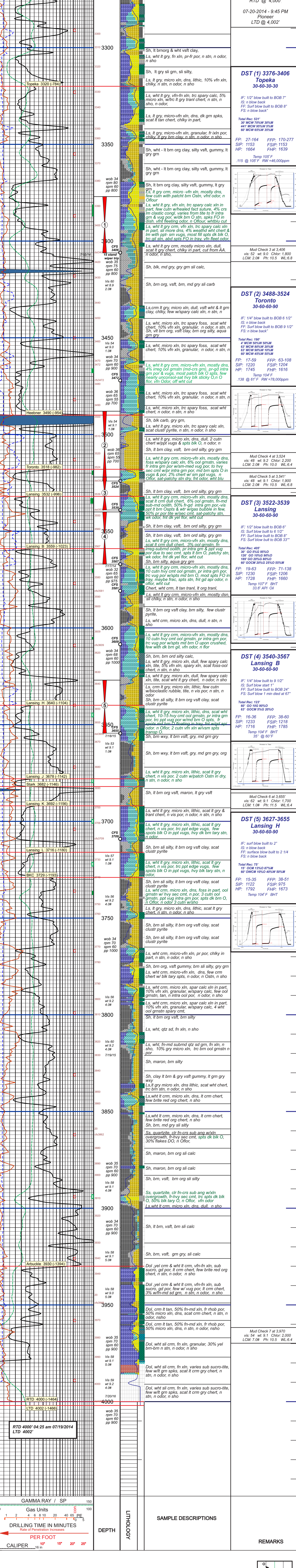
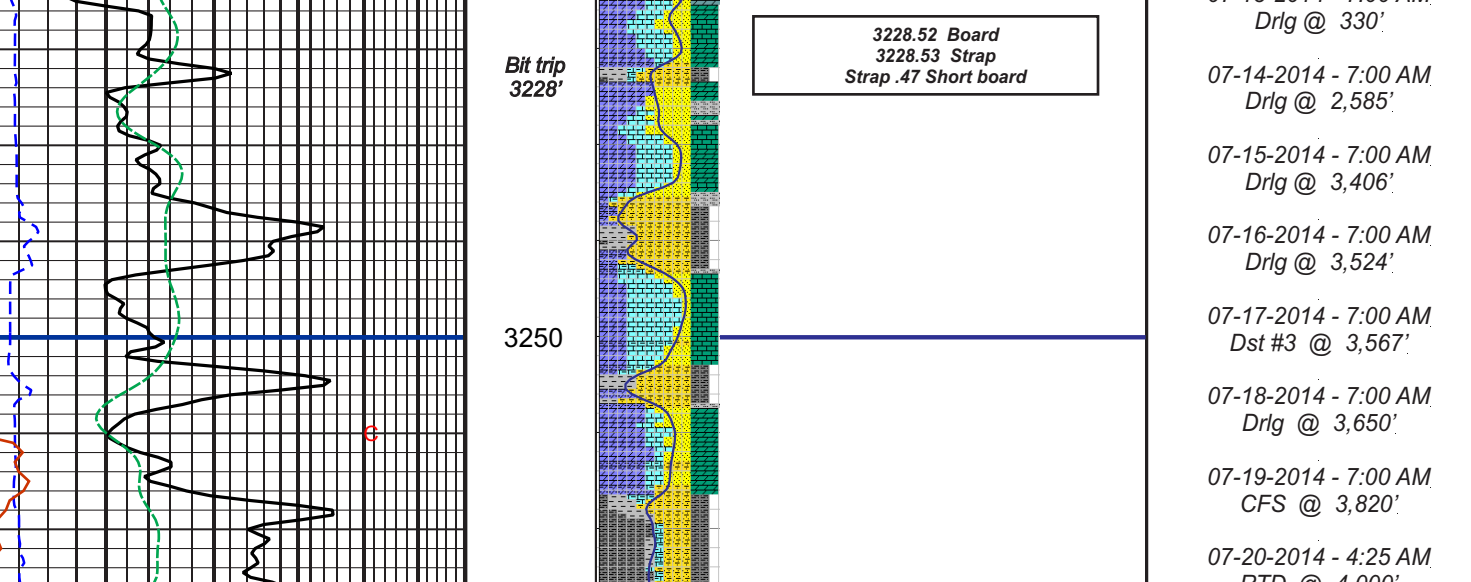


FORMATION TOPS & STRUCTURAL POSITION		SUBSTRATA		REFERENCE WELL	
FORMATION	SAMPLE TOPS	SUBSTRATA DATUM	ELEC LOG YGPS	SUBSTRATA DATUM	REFERENCE WELL
Anhydrit			2123	1413	A
Topoka			3320	-784	B
Hebner			3490	-984	
Toronto			3518	-982	
Lansing			3532	-996	
Lansing B			3559	-1023	
Lansing J			3678	-1142	
Lansing K			3682	-1146	
Arbuckle			3692	-1156	
RTD			3729	-1193	
LTD			3930	-1394	
			4000	-1466	
			4002	-1464	

REMARKS & RECOMMENDATIONS:
Based on dst results and sample shows 5 1/2 csg was set.

LAN 792, Modified 5/05, 11/11, 4/12, 4/16; Hanover, KS 66945 1inch = 25.4mm 8.5 x 8.5 ft, 216 mm x 2460 mm

LEGEND



COMPANY: Cobalt Energy LLC
LEASE: Ritter 'A' #1-32 SEC. 32 TWP 33S R9E 26W
LOCATION: 335' FNL & 1200' FWL
COUNTY: Decatur STATE: KS

ELEVATIONS: K.B. 2536
D.F. 2531
G.L. 2531
All measurements from K.B. 2536

