



## DRILL STEM TEST REPORT

Prepared For: **Cobalt Energy, LLC**

PO Box 8037  
Wichita, KS 67208

ATTN: Max Lovely/Cliff Ott

**Yale 'A' #1-24**

**S24-11s-29w Gove,KS**

Start Date: 2014.08.18 @ 18:50:00

End Date: 2014.08.19 @ 01:31:09

Job Ticket #: 57200                      DST #: 1

Trilobite Testing, Inc  
1515 Commerce Parkway Hays, KS 67601  
ph: 785-625-4778 fax: 785-625-5620

Printed: 2014.08.25 @ 08:41:54



**TRILOBITE  
TESTING, INC**

# DRILL STEM TEST REPORT

Cobalt Energy, LLC

**S24-11s-29w Gove,KS**

PO Box 8037  
Wichita, KS 67208

**Yale 'A' #1-24**

Job Ticket: 57200

**DST#: 1**

ATTN: Max Lovely/Cliff Ott

Test Start: 2014.08.18 @ 18:50:00

## GENERAL INFORMATION:

Formation: **LKC 'H'**

Deviated: No Whipstock: ft (KB)

Time Tool Opened: 21:41:00

Time Test Ended: 01:31:09

Test Type: Conventional Bottom Hole (Initial)

Tester: Chuck Smith

Unit No: 61

**Interval: 4107.00 ft (KB) To 4128.00 ft (KB) (TVD)**

Reference Elevations: 2830.00 ft (KB)

Total Depth: 4128.00 ft (KB) (TVD)

2818.00 ft (CF)

Hole Diameter: 7.88 inches Hole Condition: Good

KB to GR/CF: 12.00 ft

**Serial #: 6751**

**Outside**

Press@RunDepth: 25.50 psig @ 4110.00 ft (KB)

Capacity: 8000.00 psig

Start Date: 2014.08.18

End Date:

2014.08.19

Last Calib.:

2014.08.19

Start Time: 18:50:02

End Time:

01:31:10

Time On Btm:

2014.08.18 @ 21:37:40

Time Off Btm:

2014.08.18 @ 23:48:10

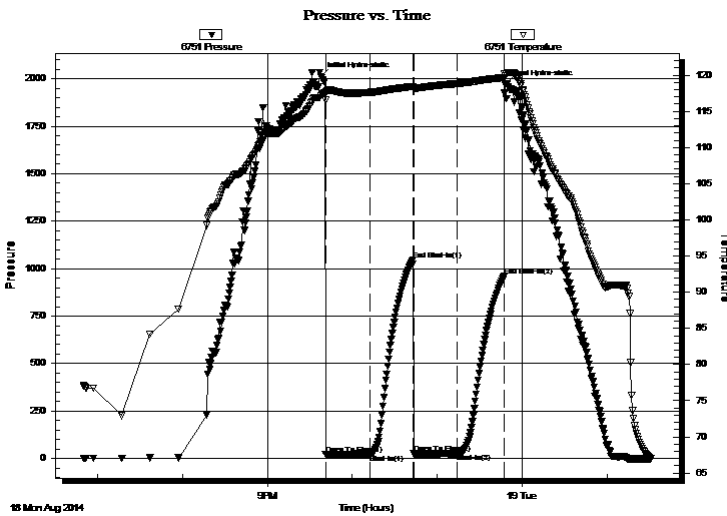
**TEST COMMENT:** 30- 2" Blow , bled off to 1/2" and died @ 25 min. (Tool slid 2-3' and mud dropped 3')

30- No return.

30- No blow .

30- No return.

## PRESSURE SUMMARY



Time (Min.)	Pressure (psig)	Temp (deg F)	Annotation
0	2012.31	117.13	Initial Hydro-static
4	22.81	116.57	Open To Flow (1)
35	24.22	117.62	Shut-In(1)
66	1044.61	118.45	End Shut-In(1)
66	24.78	118.02	Open To Flow (2)
97	25.50	118.84	Shut-In(2)
130	961.08	119.69	End Shut-In(2)
131	1967.01	119.90	Final Hydro-static

## Recovery

Length (ft)	Description	Volume (bbl)
15.00	M 100m Oil spots in tool.	0.21

## Gas Rates

	Choke (inches)	Pressure (psig)	Gas Rate (Mcf/d)





**TRILOBITE  
TESTING, INC**

# DRILL STEM TEST REPORT

**TOOL DIAGRAM**

Cobalt Energy, LLC

**S24-11s-29w Gove,KS**

PO Box 8037  
Wichita, KS 67208

**Yale 'A' #1-24**

Job Ticket: 57200

**DST#: 1**

ATTN: Max Lovely/Cliff Ott

Test Start: 2014.08.18 @ 18:50:00

## Tool Information

Drill Pipe:	Length: 4095.00 ft	Diameter: 3.80 inches	Volume: 57.44 bbl	Tool Weight: 2300.00 lb
Heavy Wt. Pipe:	Length: 0.00 ft	Diameter: inches	Volume: 0.00 bbl	Weight set on Packer: 25000.00 lb
Drill Collar:	Length: 0.00 ft	Diameter: 2.25 inches	Volume: 0.00 bbl	Weight to Pull Loose: 75000.00 lb
			<u>Total Volume: 57.44 bbl</u>	Tool Chased 0.00 ft
Drill Pipe Above KB:	15.50 ft			String Weight: Initial 57000.00 lb
Depth to Top Packer:	4107.00 ft			Final 58000.00 lb
Depth to Bottom Packer:	ft			
Interval between Packers:	21.00 ft			
Tool Length:	48.50 ft			
Number of Packers:	2	Diameter: 6.75 inches		

Tool Comments:

Tool Description	Length (ft)	Serial No.	Position	Depth (ft)	Accum. Lengths
------------------	-------------	------------	----------	------------	----------------

Change Over Sub	1.00			4080.50	
Shut In Tool	5.00			4085.50	
Hydraulic tool	5.00			4090.50	
Jars	5.00			4095.50	
Safety Joint	2.50			4098.00	
Packer	5.00			4103.00	27.50 Bottom Of Top Packer
Packer	4.00			4107.00	
Stubb	1.00			4108.00	
Perforations	2.00			4110.00	
Recorder	0.00	8357	Inside	4110.00	
Recorder	0.00	6751	Outside	4110.00	
Perforations	15.00			4125.00	
Bullnose	3.00			4128.00	21.00 Bottom Packers & Anchor

**Total Tool Length: 48.50**



**TRILOBITE  
TESTING, INC**

# DRILL STEM TEST REPORT

## FLUID SUMMARY

Cobalt Energy, LLC

**S24-11s-29w Gove,KS**

PO Box 8037  
Wichita, KS 67208

**Yale 'A' #1-24**

Job Ticket: 57200

**DST#: 1**

ATTN: Max Lovely/Cliff Ott

Test Start: 2014.08.18 @ 18:50:00

### Mud and Cushion Information

Mud Type: Gel Chem

Cushion Type:

Oil API:

deg API

Mud Weight: 9.00 lb/gal

Cushion Length:

ft

Water Salinity:

ppm

Viscosity: 53.00 sec/qt

Cushion Volume:

bbbl

Water Loss: 8.17 in<sup>3</sup>

Gas Cushion Type:

Resistivity: ohm.m

Gas Cushion Pressure:

psig

Salinity: 1800.00 ppm

Filter Cake: 1.00 inches

### Recovery Information

Recovery Table

Length ft	Description	Volume bbl
15.00	M 100m Oil spots in tool.	0.210

Total Length: 15.00 ft      Total Volume: 0.210 bbl

Num Fluid Samples: 0

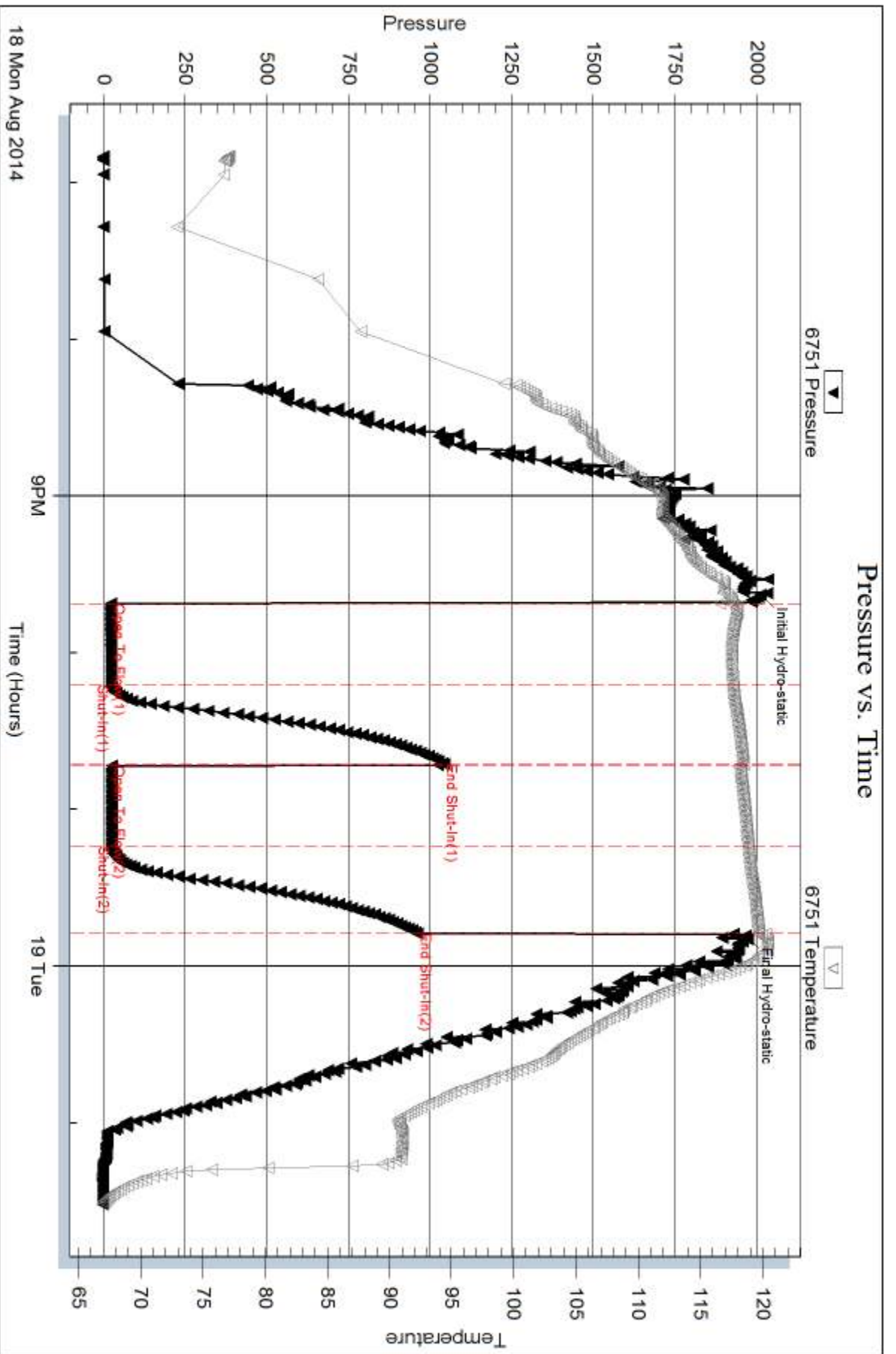
Num Gas Bombs: 0

Serial #:

Laboratory Name:

Laboratory Location:

Recovery Comments:



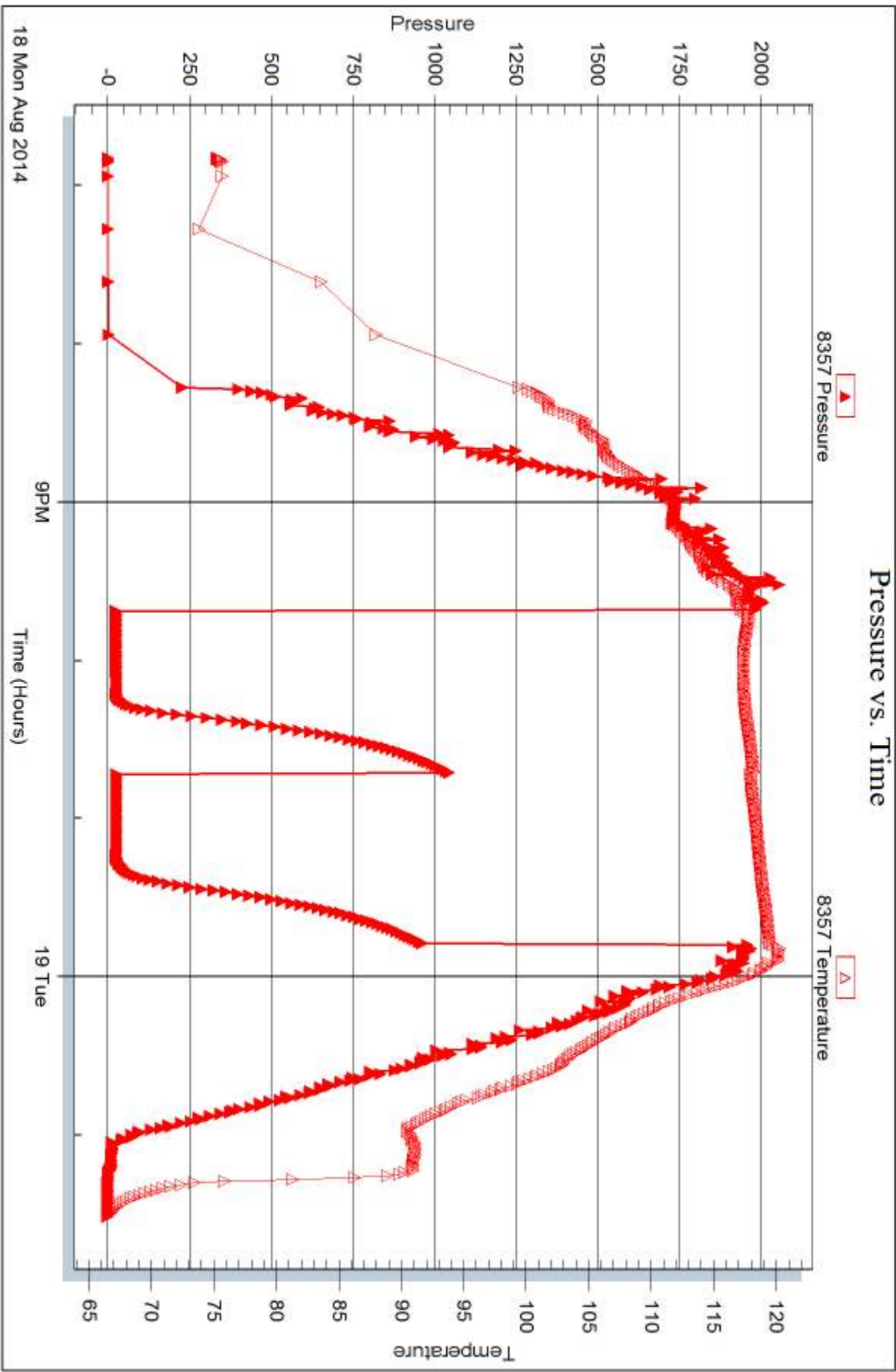
Serial #: 8357

Inside

Cobalt Energy, LLC

Yale 'A' #1-24

DST Test Number: 1





## DRILL STEM TEST REPORT

Prepared For: **Cobalt Energy, LLC**

PO Box 8037  
Wichita, KS 67208

ATTN: Max Lovely/Cliff Ott

**Yale 'A' #1-24**

**S24-11s-29w Gove,KS**

Start Date: 2014.08.19 @ 13:40:00

End Date: 2014.08.19 @ 19:33:30

Job Ticket #: 57376                      DST #: 2

Trilobite Testing, Inc  
1515 Commerce Parkway Hays, KS 67601  
ph: 785-625-4778 fax: 785-625-5620

Printed: 2014.08.25 @ 08:38:08





**TRILOBITE TESTING, INC**

# DRILL STEM TEST REPORT

Cobalt Energy, LLC

**S24-11s-29w Gove,KS**

PO Box 8037  
Wichita, KS 67208

**Yale 'A' #1-24**

Job Ticket: 57376

**DST#: 2**

ATTN: Max Lovely/Cliff Ott

Test Start: 2014.08.19 @ 13:40:00

## GENERAL INFORMATION:

Formation: **LKC 'J'**

Deviated: No Whipstock: ft (KB)

Time Tool Opened: 15:51:50

Time Test Ended: 19:33:30

Test Type: Conventional Bottom Hole (Reset)

Tester: Chuck Smith

Unit No: 61

**Interval: 4158.00 ft (KB) To 4189.00 ft (KB) (TVD)**

Total Depth: 4189.00 ft (KB) (TVD)

Hole Diameter: 7.88 inches Hole Condition: Good

Reference Elevations: 2830.00 ft (KB)

2818.00 ft (CF)

KB to GR/CF: 12.00 ft

**Serial #: 8357**

**Inside**

Press@RunDepth: 20.19 psig @ 4161.00 ft (KB)

Start Date: 2014.08.19

End Date:

2014.08.19

Start Time: 13:40:02

End Time:

19:33:30

Capacity: 8000.00 psig

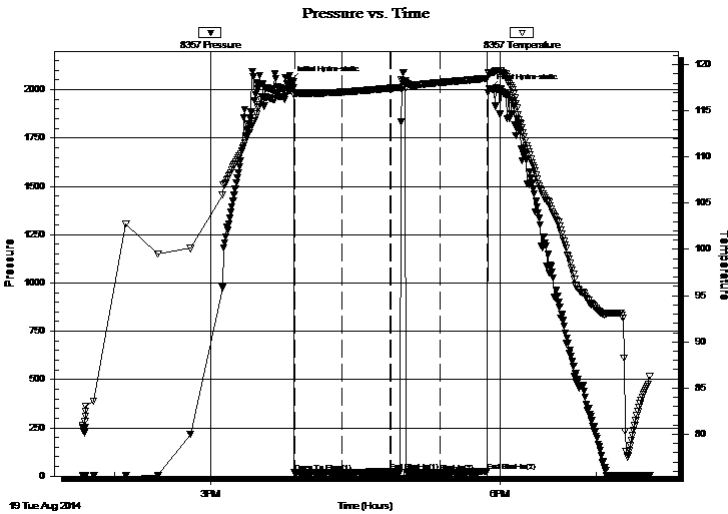
Last Calib.: 2014.08.19

Time On Btm: 2014.08.19 @ 15:49:20

Time Off Btm: 2014.08.19 @ 17:53:40

TEST COMMENT: 30- Very weak blow died @ 2 min.  
30- No return.  
30- No blow, flushed tool, surge died.  
30- No return.

## PRESSURE SUMMARY



Time (Min.)	Pressure (psig)	Temp (deg F)	Annotation
0	2045.81	117.24	Initial Hydro-static
3	17.67	116.76	Open To Flow (1)
32	19.35	117.03	Shut-In(1)
63	23.35	117.45	End Shut-In(1)
63	19.06	117.46	Open To Flow (2)
94	20.19	118.06	Shut-In(2)
123	24.19	118.51	End Shut-In(2)
125	2006.78	119.09	Final Hydro-static

## Recovery

Length (ft)	Description	Volume (bbl)
2.00	M 100m	0.03

\* Recovery from multiple tests

## Gas Rates

Choke (inches)	Pressure (psig)	Gas Rate (Mcf/d)





**TRILOBITE  
TESTING, INC**

# DRILL STEM TEST REPORT

**TOOL DIAGRAM**

Cobalt Energy, LLC

**S24-11s-29w Gove,KS**

PO Box 8037  
Wichita, KS 67208

**Yale 'A' #1-24**

Job Ticket: 57376

**DST#: 2**

ATTN: Max Lovely/Cliff Ott

Test Start: 2014.08.19 @ 13:40:00

## Tool Information

Drill Pipe:	Length: 4162.00 ft	Diameter: 3.80 inches	Volume: 58.38 bbl	Tool Weight: 2300.00 lb
Heavy Wt. Pipe:	Length: 0.00 ft	Diameter: inches	Volume: 0.00 bbl	Weight set on Packer: 25000.00 lb
Drill Collar:	Length: 0.00 ft	Diameter: 2.25 inches	Volume: 0.00 bbl	Weight to Pull Loose: 70000.00 lb
			<u>Total Volume: 58.38 bbl</u>	Tool Chased 0.00 ft
Drill Pipe Above KB:	31.50 ft			String Weight: Initial 57000.00 lb
Depth to Top Packer:	4158.00 ft			Final 57000.00 lb
Depth to Bottom Packer:	ft			
Interval between Packers:	31.00 ft			
Tool Length:	58.50 ft			
Number of Packers:	2	Diameter: 6.75 inches		

Tool Comments:

## Tool Description

Tool Description	Length (ft)	Serial No.	Position	Depth (ft)	Accum. Lengths
Change Over Sub	1.00			4131.50	
Shut In Tool	5.00			4136.50	
Hydraulic tool	5.00			4141.50	
Jars	5.00			4146.50	
Safety Joint	2.50			4149.00	
Packer	5.00			4154.00	27.50 Bottom Of Top Packer
Packer	4.00			4158.00	
Stubb	1.00			4159.00	
Perforations	2.00			4161.00	
Recorder	0.00	8357	Inside	4161.00	
Recorder	0.00	6751	Outside	4161.00	
Perforations	25.00			4186.00	
Bullnose	3.00			4189.00	31.00 Bottom Packers & Anchor

**Total Tool Length: 58.50**



**TRILOBITE  
TESTING, INC**

# DRILL STEM TEST REPORT

## FLUID SUMMARY

Cobalt Energy, LLC

**S24-11s-29w Gove,KS**

PO Box 8037  
Wichita, KS 67208

**Yale 'A' #1-24**

Job Ticket: 57376

**DST#: 2**

ATTN: Max Lovely/Cliff Ott

Test Start: 2014.08.19 @ 13:40:00

### Mud and Cushion Information

Mud Type: Gel Chem

Cushion Type:

Oil API:

deg API

Mud Weight: 9.00 lb/gal

Cushion Length:

ft

Water Salinity:

ppm

Viscosity: 50.00 sec/qt

Cushion Volume:

bbbl

Water Loss: 8.78 in<sup>3</sup>

Gas Cushion Type:

Resistivity: ohm.m

Gas Cushion Pressure:

psig

Salinity: 1500.00 ppm

Filter Cake: 1.00 inches

### Recovery Information

Recovery Table

Length ft	Description	Volume bbl
2.00	M 100m	0.028

Total Length: 2.00 ft      Total Volume: 0.028 bbl

Num Fluid Samples: 0

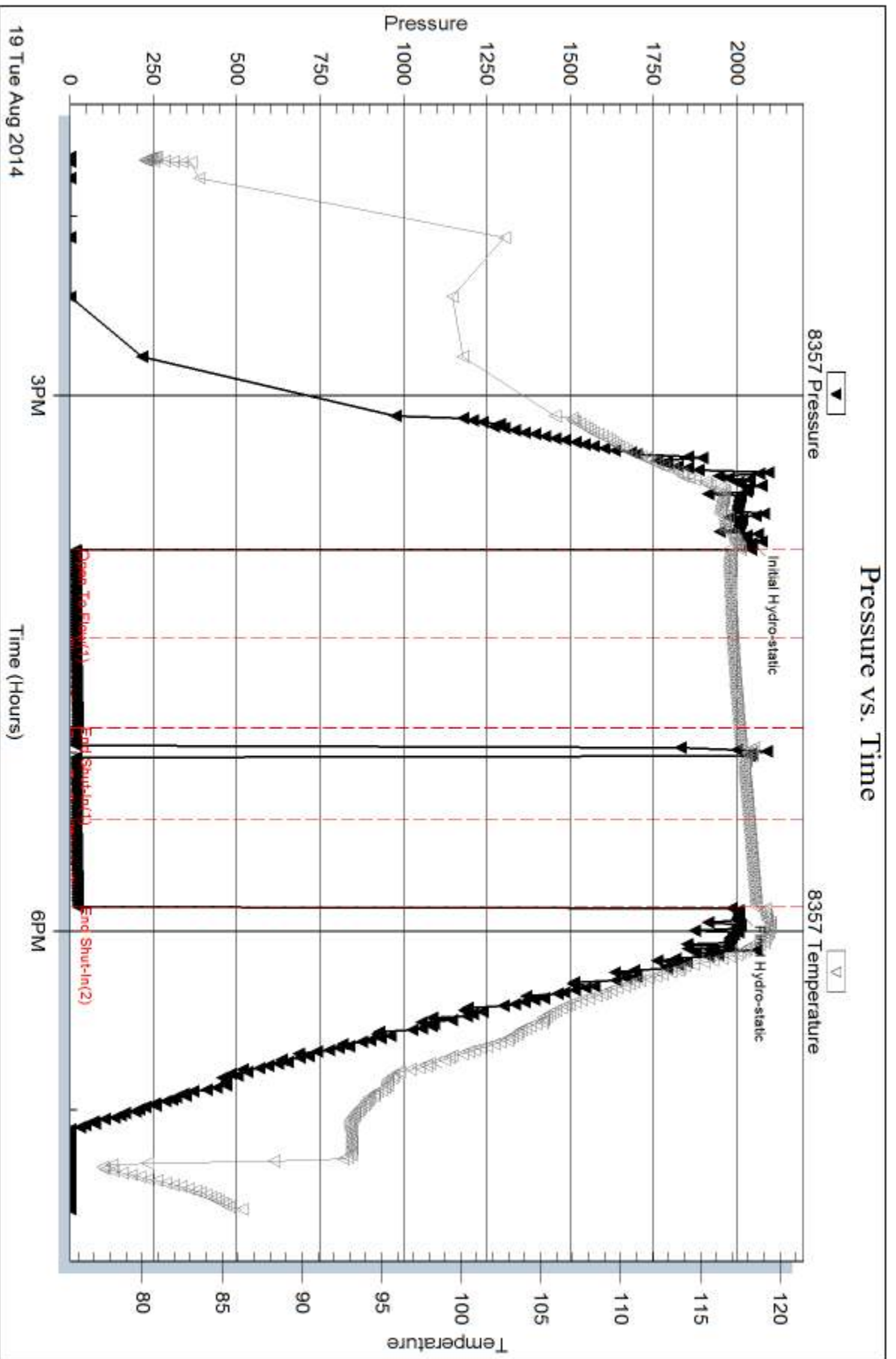
Num Gas Bombs: 0

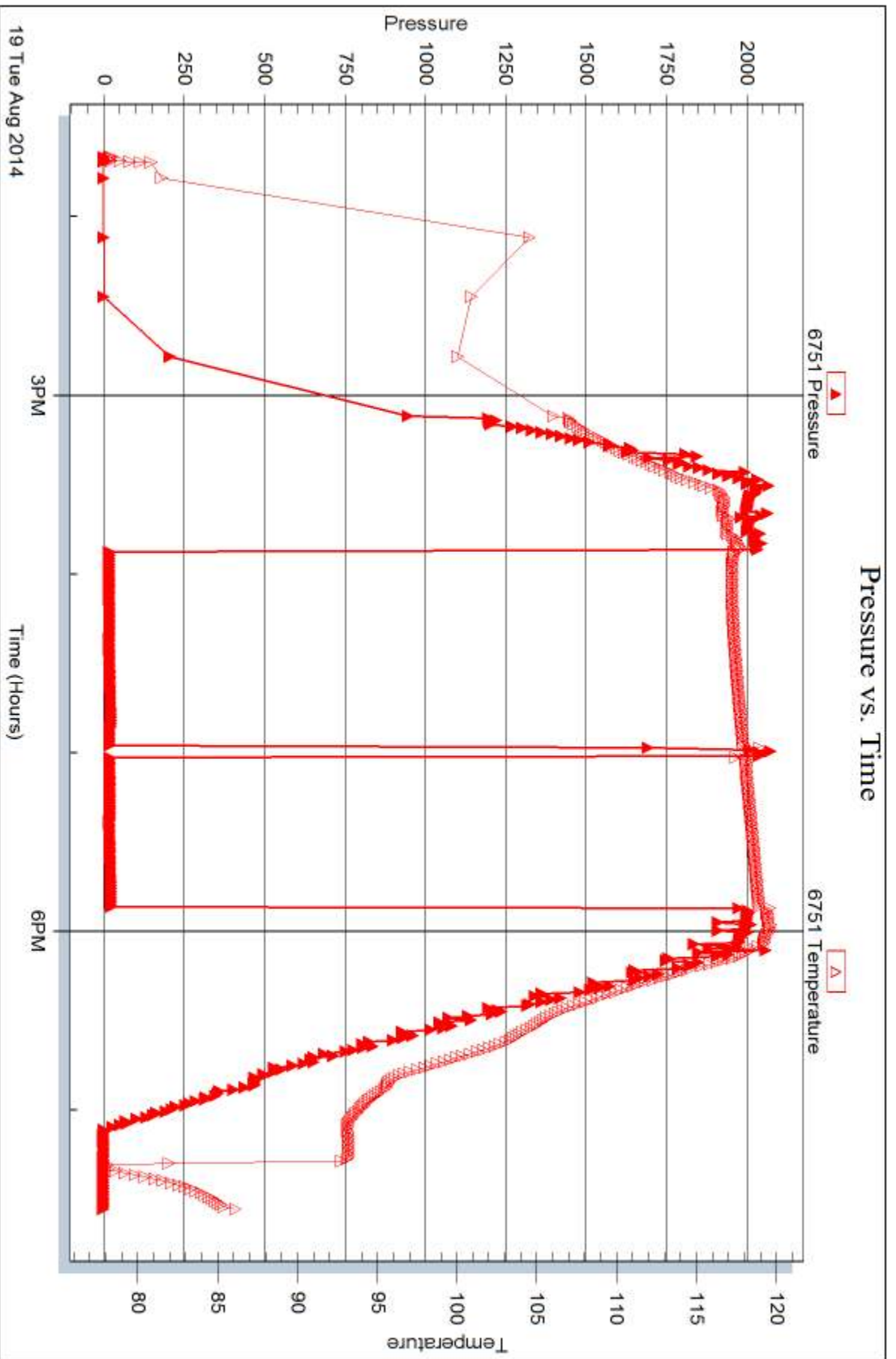
Serial #:

Laboratory Name:

Laboratory Location:

Recovery Comments:







## DRILL STEM TEST REPORT

Prepared For: **Cobalt Energy, LLC**

PO Box 8037  
Wichita, KS 67208

ATTN: Max Lovely/Cliff Ott

**Yale 'A' #1-24**

**S24-11s-29w Gove,KS**

Start Date: 2014.08.20 @ 19:46:00

End Date: 2014.08.21 @ 01:42:00

Job Ticket #: 57377                      DST #: 3

Trilobite Testing, Inc  
1515 Commerce Parkway Hays, KS 67601  
ph: 785-625-4778 fax: 785-625-5620

Printed: 2014.08.25 @ 08:34:27



**TRILOBITE TESTING, INC.**

# DRILL STEM TEST REPORT

Cobalt Energy, LLC

**S24-11s-29w Gove, KS**

PO Box 8037  
Wichita, KS 67208

**Yale 'A' #1-24**

Job Ticket: 57377

**DST#: 3**

ATTN: Max Lovely/Cliff Ott

Test Start: 2014.08.20 @ 19:46:00

## GENERAL INFORMATION:

Formation: **Altamont 'C'**

Deviated: No Whipstock: ft (KB)

Time Tool Opened: 21:33:30

Time Test Ended: 01:42:00

Test Type: Conventional Bottom Hole (Reset)

Tester: Chuck Smith

Unit No: 61

**Interval: 4331.00 ft (KB) To 4381.00 ft (KB) (TVD)**

Reference Elevations: 2830.00 ft (KB)

Total Depth: 4381.00 ft (KB) (TVD)

2818.00 ft (CF)

Hole Diameter: 7.88 inches Hole Condition: Good

KB to GR/CF: 12.00 ft

**Serial #: 8357**

**Inside**

Press@RunDepth: 23.88 psig @ 4335.00 ft (KB)

Capacity: 8000.00 psig

Start Date: 2014.08.20

End Date:

2014.08.21

Last Calib.: 2014.08.21

Start Time: 19:46:02

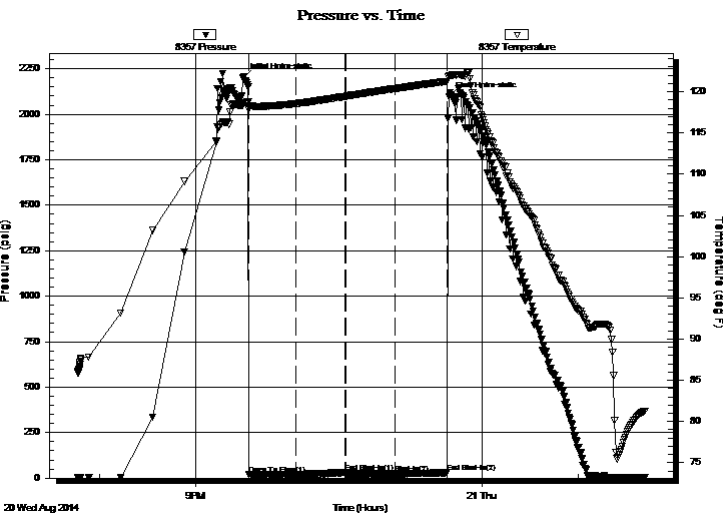
End Time:

01:42:00

Time On Btm: 2014.08.20 @ 21:30:10

Time Off Btm: 2014.08.20 @ 23:39:00

**TEST COMMENT:** 30- Weak blow died @ 5 min.  
30- No return.  
30- No blow , flushed tool, surge died.  
30- No return.



## PRESSURE SUMMARY

Time (Min.)	Pressure (psig)	Temp (deg F)	Annotation
0	2203.88	118.56	Initial Hydro-static
4	21.00	117.81	Open To Flow (1)
33	21.09	118.57	Shut-In(1)
64	30.30	119.43	End Shut-In(1)
64	19.68	119.44	Open To Flow (2)
95	23.88	120.38	Shut-In(2)
128	30.58	121.26	End Shut-In(2)
129	2096.77	121.90	Final Hydro-static

## Recovery

Length (ft)	Description	Volume (bbl)
5.00	SOCM 1 to 99m	0.07

## Gas Rates

Choke (inches)	Pressure (psig)	Gas Rate (Mcf/d)

\* Recovery from multiple tests







**TRILOBITE  
TESTING, INC**

# DRILL STEM TEST REPORT

**TOOL DIAGRAM**

Cobalt Energy, LLC

**S24-11s-29w Gove,KS**

PO Box 8037  
Wichita, KS 67208

**Yale 'A' #1-24**

Job Ticket: 57377

**DST#: 3**

ATTN: Max Lovely/Cliff Ott

Test Start: 2014.08.20 @ 19:46:00

## Tool Information

Drill Pipe:	Length: 4322.00 ft	Diameter: 3.80 inches	Volume: 60.63 bbl	Tool Weight: 2300.00 lb
Heavy Wt. Pipe:	Length: 0.00 ft	Diameter: inches	Volume: 0.00 bbl	Weight set on Packer: 25000.00 lb
Drill Collar:	Length: 0.00 ft	Diameter: 2.25 inches	Volume: 0.00 bbl	Weight to Pull Loose: 70000.00 lb
			<u>Total Volume: 60.63 bbl</u>	Tool Chased 0.00 ft
Drill Pipe Above KB:	16.00 ft			String Weight: Initial 58000.00 lb
Depth to Top Packer:	4331.00 ft			Final 58000.00 lb
Depth to Bottom Packer:	ft			
Interval between Packers:	50.00 ft			
Tool Length:	75.00 ft			
Number of Packers:	2	Diameter: 6.75 inches		

Tool Comments:

## Tool Description

Tool Description	Length (ft)	Serial No.	Position	Depth (ft)	Accum. Lengths
Change Over Sub	1.00			4307.00	
Shut In Tool	5.00			4312.00	
Hydraulic tool	5.00			4317.00	
Jars	5.00			4322.00	
Packer	5.00			4327.00	25.00 Bottom Of Top Packer
Packer	4.00			4331.00	
Stubb	1.00			4332.00	
Perforations	3.00			4335.00	
Recorder	0.00	8357	Inside	4335.00	
Recorder	0.00	6751	Outside	4335.00	
Perforations	10.00			4345.00	
Change Over Sub	1.00			4346.00	
Drill Pipe	31.00			4377.00	
Change Over Sub	1.00			4378.00	
Bullnose	3.00			4381.00	50.00 Bottom Packers & Anchor

**Total Tool Length: 75.00**



**TRILOBITE  
TESTING, INC**

# DRILL STEM TEST REPORT

**FLUID SUMMARY**

Cobalt Energy, LLC

**S24-11s-29w Gove,KS**

PO Box 8037  
Wichita, KS 67208

**Yale 'A' #1-24**

Job Ticket: 57377

**DST#: 3**

ATTN: Max Lovely/Cliff Ott

Test Start: 2014.08.20 @ 19:46:00

## Mud and Cushion Information

Mud Type: Gel Chem

Cushion Type:

Oil API:

deg API

Mud Weight: 9.00 lb/gal

Cushion Length:

ft

Water Salinity:

ppm

Viscosity: 57.00 sec/qt

Cushion Volume:

bbbl

Water Loss: 9.48 in<sup>3</sup>

Gas Cushion Type:

Resistivity: ohm.m

Gas Cushion Pressure:

psig

Salinity: 1700.00 ppm

Filter Cake: 1.00 inches

## Recovery Information

Recovery Table

Length ft	Description	Volume bbl
5.00	SOCM 1o 99m	0.070

Total Length: 5.00 ft      Total Volume: 0.070 bbl

Num Fluid Samples: 0

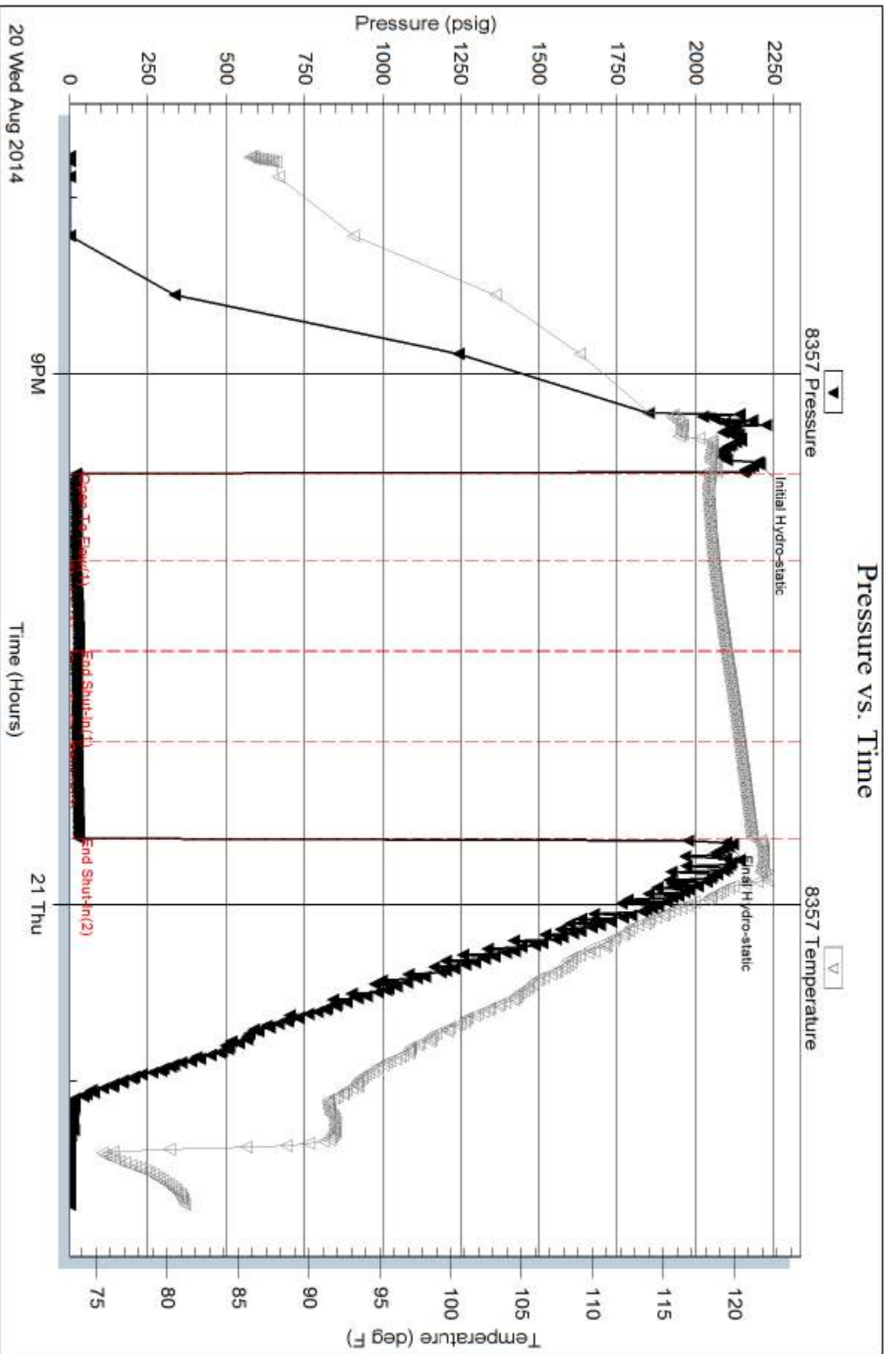
Num Gas Bombs: 0

Serial #:

Laboratory Name:

Laboratory Location:

Recovery Comments:

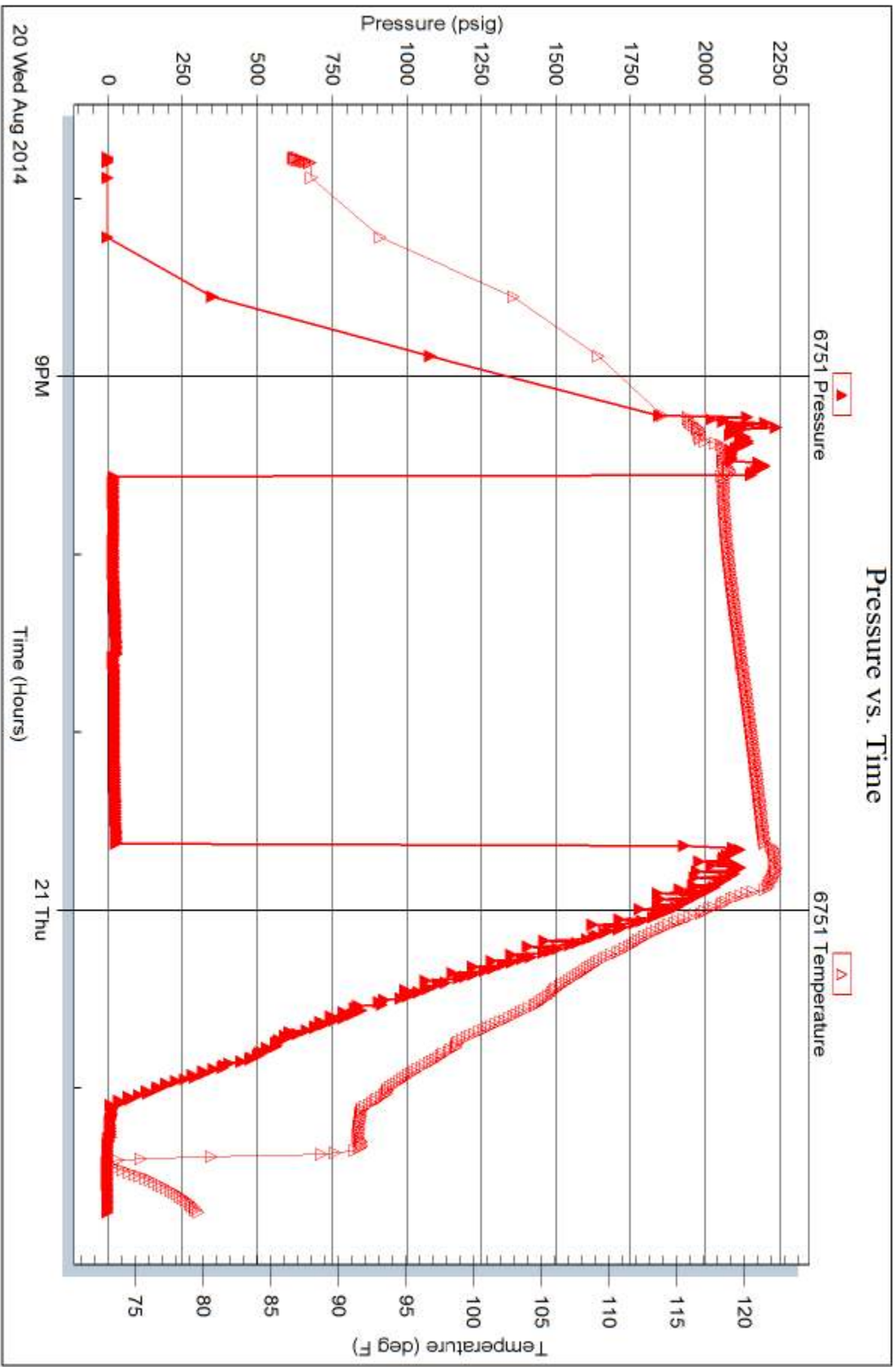


Serial #: 6751

Outside Cobalt Energy, LLC

Yale 'A' #1-24

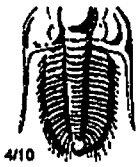
DST Test Number: 3



Trilobite Testing, Inc

Ref. No: 57377

Printed: 2014.08.25 @ 08:36:12



# TRILOBITE TESTING INC.

1515 Commerce Parkway • Hays, Kansas 67601

## Test Ticket

NO. 0200

Well Name & No. Yale A #1-24 Test No. 1 Date 8-18-14  
 Company Cobalt Energy, LLC Elevation 2830 KB 2818 GL  
 Address POB 8037 Wichita, KS 67208  
 Co. Rep / Geo. Max Lovely Rig Southwind #70  
 Location: Sec. 24 Twp. 11s Rge. 29w Co. Grave State Ks

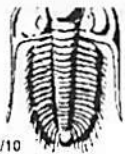
Interval Tested 4107-4128 Zone Tested Lansing 'H'  
 Anchor Length 21 Drill Pipe Run 409.5 Mud Wt. 9.2  
 Top Packer Depth 4103 Drill Collars Run 0 Vis 5.3  
 Bottom Packer Depth 4107 Wt. Pipe Run 0 WL 8.2  
 Total Depth 4128 Chlorides 1800 ppm System LCM 1<sup>st</sup>  
 Blow Description 2" Blow, bled off to 1/2" and died @ 2.5 min. (Top slid 2:3' mud dropped .3')  
No returns  
No blows  
No reason

Rec	Feet of	%gas	%oil	%water	%mud
Rec <u>15</u>	Feet of <u>M oil spots in tool</u>				<u>100</u>
Rec	Feet of	%gas	%oil	%water	%mud
Rec	Feet of	%gas	%oil	%water	%mud
Rec	Feet of	%gas	%oil	%water	%mud

Rec Total 15 BHT 120 Gravity — API RW — @ — °F Chlorides — ppm  
 (A) Initial Hydrostatic 2012  Test 1250 T-On Location 18:50  
 (B) First Initial Flow 23  Jars 250 T-Started 18:50  
 (C) First Final Flow 24  Safety Joint 75 T-Open 21:41  
 (D) Initial Shut-In 1045  Circ Sub \_\_\_\_\_ T-Pulled 23:48  
 (E) Second Initial Flow 25  Hourly Standby \_\_\_\_\_ T-Out 1:31  
 (F) Second Final Flow 26  Mileage 128 RT 198.40  
 (G) Final Shut-In 961  Sampler \_\_\_\_\_  
 (H) Final Hydrostatic 1967  Straddle \_\_\_\_\_  Ruined Shale Packer \_\_\_\_\_  
 Shale Packer \_\_\_\_\_  Ruined Packer \_\_\_\_\_  
 Initial Open 30  Extra Packer \_\_\_\_\_  Extra Copies \_\_\_\_\_  
 Initial Shut-In 30  Extra Recorder \_\_\_\_\_ Sub Total 0  
 Final Flow 30  Day Standby \_\_\_\_\_ Total 1773.40  
 Final Shut-In 30  Accessibility \_\_\_\_\_ MP/DST Disc't \_\_\_\_\_  
 Sub Total 1773.40

Approved By \_\_\_\_\_ Our Representative Chuck Smith

Trilobite Testing Inc. shall not be liable for damaged of any kind of the property or personnel of the one for whom a test is made, or for any loss suffered or sustained, directly or indirectly, through the use of its equipment, or its statements or opinion concerning the results of any test, tools lost or damaged in the hole shall be paid for at cost by the party for whom the test is made.



# TRILOBITE TESTING INC.

1515 Commerce Parkway • Hays, Kansas 67601

## Test Ticket

NO. 0000

Well Name & No. Yale 'A' 1-24 Test No. 2 Date 8-19-14  
 Company Cobalt Energy, LLC Elevation 2830 KB 2810 GL  
 Address POB 8037 Wichita, KS 67208  
 Co. Rep / Geo. Max Lovely Rig Southwind #70  
 Location: Sec. 24 Twp. 11s Rge. 29w Co. Gove State KS

Interval Tested 4158-4189 Zone Tested Lansing 'J'  
 Anchor Length 31 Drill Pipe Run 4162 Mud Wt. 9.3  
 Top Packer Depth 4154 Drill Collars Run 0 Vis 50  
 Bottom Packer Depth 4158 Wt. Pipe Run 0 WL 8.8  
 Total Depth 4199 Chlorides 1500 ppm System LCM 1"

Blow Description Very weak blow died @ 2 min.  
No return.  
No blow, flushed tool, surged  
No return.

Rec	Feet of	%gas	%oil	%water	%mud
Rec <u>2</u>	Feet of <u>m</u>	%gas	%oil	%water <u>100</u>	%mud
Rec	Feet of	%gas	%oil	%water	%mud
Rec	Feet of	%gas	%oil	%water	%mud
Rec	Feet of	%gas	%oil	%water	%mud

Rec Total 2 BHT 119 Gravity — API RW @ — °F Chlorides — ppm

(A) Initial Hydrostatic <u>2046</u>	<input checked="" type="checkbox"/> Test <u>1250</u>	T-On Location <u>13:39</u>
(B) First Initial Flow <u>18</u>	<input checked="" type="checkbox"/> Jars <u>250</u>	T-Started <u>13:40</u>
(C) First Final Flow <u>19</u>	<input type="checkbox"/> Safety Joint <u>75</u>	T-Open <u>15:52</u>
(D) Initial Shut-In <u>23</u>	<input checked="" type="checkbox"/> Circ Sub <u>N/C</u>	T-Pulled <u>17:52</u>
(E) Second Initial Flow <u>19</u>	<input type="checkbox"/> Hourly Standby	T-Out <u>19:34</u>
(F) Second Final Flow <u>20</u>	<input checked="" type="checkbox"/> Mileage <u>198.40</u>	Comments
(G) Final Shut-In <u>24</u>	<input type="checkbox"/> Sampler	
(H) Final Hydrostatic <u>2007</u>	<input type="checkbox"/> Straddle	<input type="checkbox"/> Ruined Shale Packer
Initial Open <u>30</u>	<input type="checkbox"/> Shale Packer	<input type="checkbox"/> Ruined Packer
Initial Shut-In <u>30</u>	<input type="checkbox"/> Extra Packer	<input type="checkbox"/> Extra Copies
Final Flow <u>30</u>	<input type="checkbox"/> Extra Recorder	Sub Total <u>0</u>
Final Shut-In <u>30</u>	<input type="checkbox"/> Day Standby	Total <u>1773.40</u>
	<input type="checkbox"/> Accessibility	MP/DST Disc't
	Sub Total <u>1773.40</u>	

Approved By Max Lovely Our Representative Chuck Smith

Trilobite Testing Inc. shall not be liable for damaged or any kind of the property or personnel of the one for whom a test is made, or for any loss suffered or sustained, directly or indirectly, through the use of its equipment, or its statements or opinion concerning the results of any test, tools lost or damaged in the hole shall be paid for at cost by the party for whom the test is made.



# TRILOBITE TESTING INC.

1515 Commerce Parkway • Hays, Kansas 67601

## Test Ticket

NO. 0001

Well Name & No. Yale 'A' #1-24 Test No. 3 Date 8-19-14  
 Company Cobalt Energy, LLC Elevation 2830 KB 2818 GL  
 Address POB 8037 Wichita, KS 67208  
 Co. Rep / Geo. Cliff O'rourke Rig Southwind #70  
 Location: Sec. 24 Twp. 11s Rge. 29W Co. Gove State Ks

Interval Tested 4331-4381 Zone Tested Altamont 'C'  
 Anchor Length 50 Drill Pipe Run 4322 Mud Wt. 9.3  
 Top Packer Depth 4327 Drill Collars Run 0 Vis 57  
 Bottom Packer Depth 4331 Wt. Pipe Run 0 WL 9.5  
 Total Depth 4381 Chlorides 1700 ppm System LCM 1"

Blow Description Weak blow died @ 5 min.  
No return.  
No blow, flushed tool, surge died.  
No return.

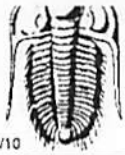
Rec	Feet of	%gas	%oil	%water	%mud
Rec	Feet of	%gas	%oil	%water	%mud
Rec <u>5</u>	Feet of <u>SOCM</u>	%gas	<u>1</u> %oil	%water	<u>99</u> %mud
Rec	Feet of	%gas	%oil	%water	%mud
Rec	Feet of	%gas	%oil	%water	%mud

Rec Total 5 BHT 121 Gravity — API RW — @ — °F Chlorides — ppm

(A) Initial Hydrostatic 2204  Test 1250 T-On Location 19:45  
 (B) First Initial Flow 21  Jars — T-Started 19:46  
 (C) First Final Flow 21  Safety Joint — T-Open 21:34  
 (D) Initial Shut-In 30  Circ Sub N/C T-Pulled 23:38  
 (E) Second Initial Flow 20  Hourly Standby — T-Out 1:42  
 (F) Second Final Flow 24  Mileage 198.40 Comments —  
 (G) Final Shut-In 31  Sampler —  
 (H) Final Hydrostatic 2097  Straddle —  Ruined Shale Packer —  
 Shale Packer —  Ruined Packer —  
 Extra Packer —  Extra Copies —  
 Initial Open 30  Extra Recorder — Sub Total 0  
 Initial Shut-In 30  Day Standby — Total 1448.40  
 Final Flow 30  Accessibility — MP/DST Disc't —  
 Final Shut-In 30  Sub Total 1448.40

Approved By [Signature] Our Representative Chuck Smith  
 Trilobite Testing Inc. shall not be liable for damaged or any kind of the property or personnel of the one for whom a test is made, or for any loss suffered or sustained, directly or indirectly, through the use of its equipment, or its statements or opinion concerning the results of any test, tools lost or damaged in the hole shall be paid for at cost by the party for whom the test is made.





# TRILOBITE TESTING INC.

1515 Commerce Parkway • Hays, Kansas 67601

## Test Ticket

NO. 00012

Well Name & No. Yale 'A' #1-24 Test No. \_\_\_\_\_ Date 8-22-14  
 Company Cobalt Energy, LLC Elevation 2830 KB 2818 GL \_\_\_\_\_  
 Address POB 8037 Wichita, KS 67208  
 Co. Rep / Geo. Cliff Ottaway Rig Southwind "70"  
 Location: Sec. 24 Twp. 11s Rge. 29w Co. Gove State KS

Interval Tested \_\_\_\_\_ Zone Tested \_\_\_\_\_  
 Anchor Length \_\_\_\_\_ Drill Pipe Run \_\_\_\_\_ Mud Wt. \_\_\_\_\_  
 Top Packer Depth \_\_\_\_\_ Drill Collars Run \_\_\_\_\_ Vis \_\_\_\_\_  
 Bottom Packer Depth \_\_\_\_\_ Wt. Pipe Run \_\_\_\_\_ WL \_\_\_\_\_  
 Total Depth \_\_\_\_\_ Chlorides \_\_\_\_\_ ppm System \_\_\_\_\_ LCM \_\_\_\_\_  
 Blow Description Loaded tools after logs. Rig will drill another ±100'

Rec	Feet of	%gas	%oil	%water	%mud
Rec	Feet of	%gas	%oil	%water	%mud
Rec	Feet of	%gas	%oil	%water	%mud
Rec	Feet of	%gas	%oil	%water	%mud
Rec	Feet of	%gas	%oil	%water	%mud

Rec Total \_\_\_\_\_ BHT \_\_\_\_\_ Gravity \_\_\_\_\_ API RW \_\_\_\_\_ @ \_\_\_\_\_ ° F Chlorides \_\_\_\_\_ ppm

(A) Initial Hydrostatic \_\_\_\_\_  Test \_\_\_\_\_ T-On Location 13:05  
 (B) First Initial Flow \_\_\_\_\_  Jars \_\_\_\_\_ T-Started \_\_\_\_\_  
 (C) First Final Flow \_\_\_\_\_  Safety Joint \_\_\_\_\_ T-Open \_\_\_\_\_  
 (D) Initial Shut-In \_\_\_\_\_  Circ Sub \_\_\_\_\_ T-Pulled \_\_\_\_\_  
 (E) Second Initial Flow \_\_\_\_\_  Hourly Standby \_\_\_\_\_ T-Out \_\_\_\_\_  
 (F) Second Final Flow \_\_\_\_\_  Mileage 198.40 Comments \_\_\_\_\_  
 (G) Final Shut-In \_\_\_\_\_  Sampler \_\_\_\_\_  
 (H) Final Hydrostatic \_\_\_\_\_  Straddle \_\_\_\_\_  Ruined Shale Packer \_\_\_\_\_  
 Shale Packer \_\_\_\_\_  Ruined Packer \_\_\_\_\_  
 Initial Open \_\_\_\_\_  Extra Packer \_\_\_\_\_  Extra Copies \_\_\_\_\_  
 Initial Shut-In \_\_\_\_\_  Extra Recorder \_\_\_\_\_ Sub Total 800  
 Final Flow \_\_\_\_\_  Day Standby 1d 11.25h Total 998.40  
 Final Shut-In \_\_\_\_\_  Accessibility \_\_\_\_\_ MP/DST Disc't \_\_\_\_\_  
 Sub Total 198.40

Approved By \_\_\_\_\_ Our Representative Chuck Smith  
 Trilobite Testing Inc. shall not be liable for damaged of any kind of the property or personnel of the one for whom a test is made, or for any loss suffered or sustained, directly or indirectly, through the use of its equipment, or its statements or opinion concerning the results of any test, tools lost or damaged in the hole shall be paid for at cost by the party for whom the test is made.