



**TRILOBITE
TESTING, INC.**

DRILL STEM TEST REPORT

Mid-Con Energy Operating Inc

27-13s-21w Trego

2431 E.61st ST
Ste 850
Tulsa Oklahoma 74136- 1236
ATTN: Ryan Logsdon

Bertha Riedel #2-27

Job Ticket: 47355 **DST#: 1**

Test Start: 2012.04.02 @ 09:51:04

GENERAL INFORMATION:

Formation: **LKC "E"**
 Deviated: No Whipstock: ft (KB)
 Time Tool Opened: 12:41:59
 Time Test Ended: 17:41:58
 Interval: **3740.00 ft (KB) To 3757.00 ft (KB) (TVD)**
 Total Depth: 3757.00 ft (KB) (TVD)
 Hole Diameter: 7.85 inches Hole Condition: Fair
 Test Type: Conventional Bottom Hole (Initial)
 Tester: Ray Schwager
 Unit No: 42
 Reference Elevations: 2349.00 ft (KB)
 2339.00 ft (CF)
 KB to GR/CF: 10.00 ft

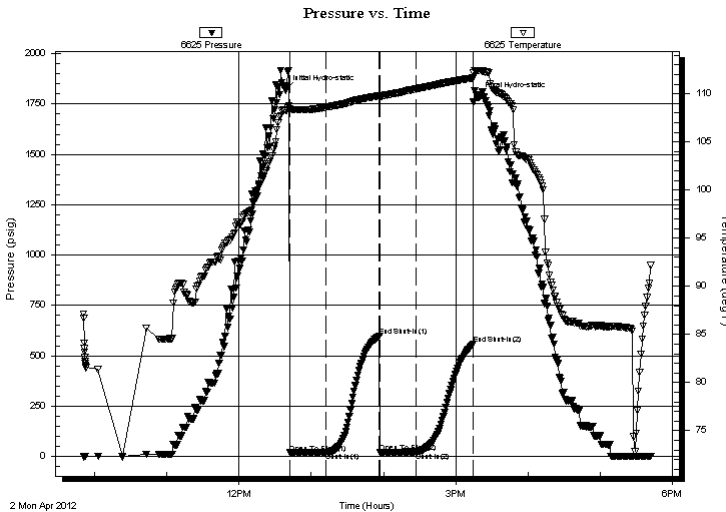
Serial #: 6625

Inside

Press @ RunDepth: 22.98 psig @ 3741.00 ft (KB) Capacity: 8000.00 psig
 Start Date: 2012.04.02 End Date: 2012.04.02 Last Calib.: 2012.04.02
 Start Time: 09:51:04 End Time: 17:41:58 Time On Btm: 2012.04.02 @ 12:38:29
 Time Off Btm: 2012.04.02 @ 15:18:28

TEST COMMENT: 30-IFP-surface bl died in 20min
 45-ISIP-no bl
 30-FFP-no bl
 45-FSIP-no bl

PRESSURE SUMMARY



Time (Min.)	Pressure (psig)	Temp (deg F)	Annotation
0	1819.85	108.31	Initial Hydro-static
4	18.38	108.41	Open To Flow (1)
34	20.58	108.60	Shut-In(1)
78	598.33	109.81	End Shut-In(1)
79	21.22	109.71	Open To Flow (2)
109	22.98	110.52	Shut-In(2)
156	556.60	111.62	End Shut-In(2)
160	1784.83	112.42	Final Hydro-static

Recovery

Length (ft)	Description	Volume (bbl)
10.00	Mud	0.05

Gas Rates

Choke (inches)	Pressure (psig)	Gas Rate (Mcf/d)



**TRILOBITE
TESTING, INC.**

DRILL STEM TEST REPORT

FLUID SUMMARY

Mid-Con Energy Operating Inc
2431 E.61st ST
Ste 850
Tulsa Oklahoma 74136- 1236
ATTN: Ryan Logsdon

27-13s-21w Trego
Bertha Riedel #2-27
Job Ticket: 47355 **DST#: 1**
Test Start: 2012.04.02 @ 09:51:04

Mud and Cushion Information

Mud Type: Gel Chem	Cushion Type:	Oil API:	deg API
Mud Weight: 9.00 lb/gal	Cushion Length: ft	Water Salinity:	ppm
Viscosity: 63.00 sec/qt	Cushion Volume: bbl		
Water Loss: 7.96 in ³	Gas Cushion Type:		
Resistivity: ohm.m	Gas Cushion Pressure: psig		
Salinity: 2000.00 ppm			
Filter Cake: 1.00 inches			

Recovery Information

Recovery Table

Length ft	Description	Volume bbl
10.00	Mud	0.049

Total Length: 10.00 ft Total Volume: 0.049 bbl
Num Fluid Samples: 0 Num Gas Bombs: 0 Serial #:
Laboratory Name: Laboratory Location:
Recovery Comments:

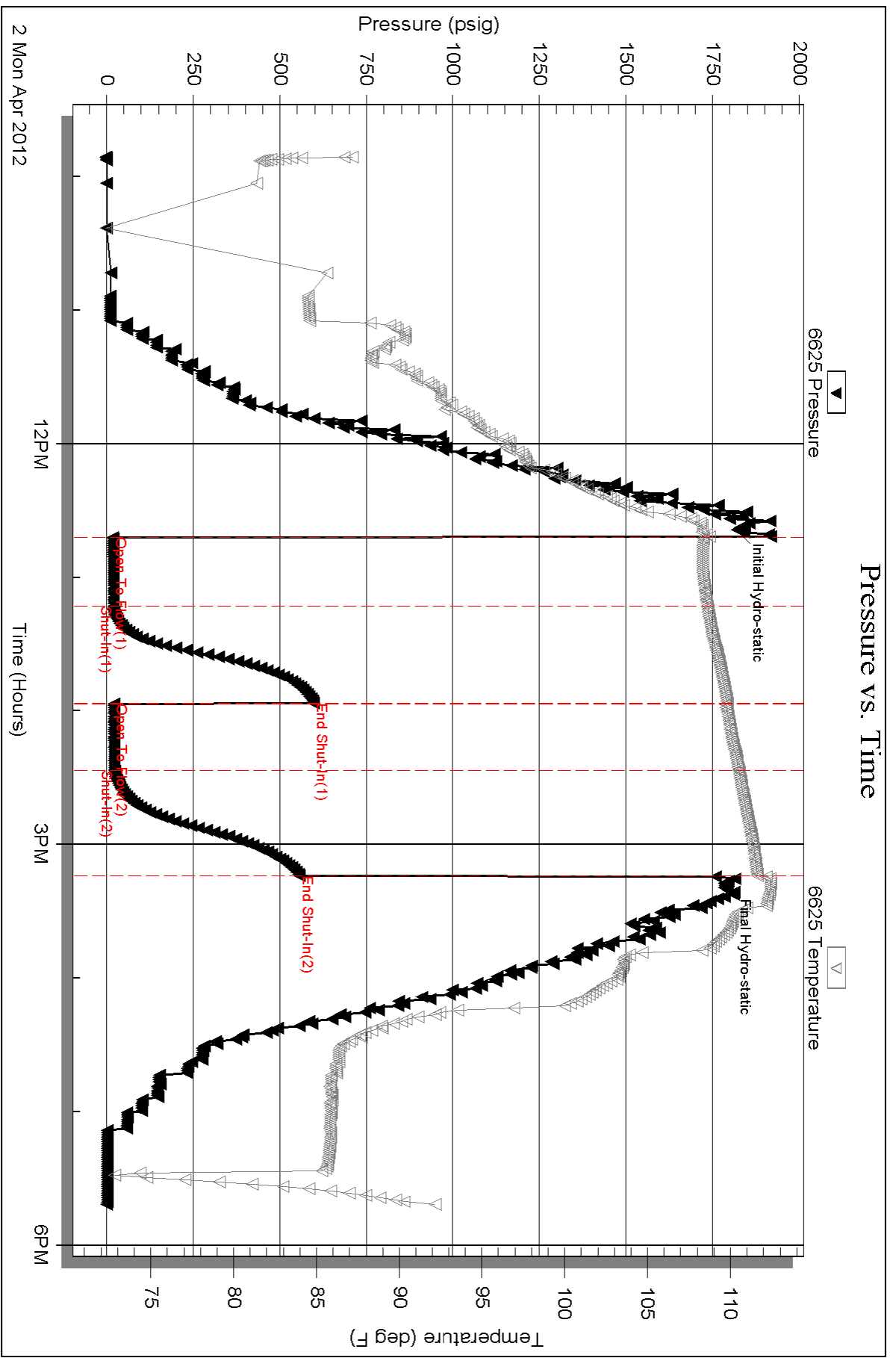
Serial #: 6625

Inside

Md-Con Energy Operating Inc

Bertha Riedel #2-27

DST Test Number: 1



Triobite Testing, Inc

Ref. No: 47355

Printed: 2012.04.03 @ 08:42:02