



## DRILL STEM TEST REPORT

Prepared For: **Murfin Drilling Co. Inc**

250 N Water Ste 300  
Wichita, KS 67202

ATTN: Jeff Christian

### **Meyer #1-8**

#### **8-10s-14w Osborne,KS**

Start Date: 2014.08.01 @ 10:42:00

End Date: 2014.08.01 @ 18:34:00

Job Ticket #: 59275                      DST #: 1

Trilobite Testing, Inc  
1515 Commerce Parkway Hays, KS 67601  
ph: 785-625-4778 fax: 785-625-5620

Printed: 2014.08.06 @ 10:43:03



**TRILOBITE TESTING, INC**

# DRILL STEM TEST REPORT

Murfin Drilling Co. Inc  
 250 N Water Ste 300  
 Wichita, KS 67202  
 ATTN: Jeff Christian

**8-10s-14w Osborne, KS**

**Meyer #1-8**

Job Ticket: 59275

**DST#: 1**

Test Start: 2014.08.01 @ 10:42:00

## GENERAL INFORMATION:

Formation: **Topeka**

Deviated: No Whipstock: ft (KB)

Time Tool Opened: 13:56:30

Time Test Ended: 18:34:00

Test Type: Conventional Bottom Hole (Initial)

Tester: Phillip Gage

Unit No: 58

**Interval: 2860.00 ft (KB) To 2880.00 ft (KB) (TVD)**

Reference Elevations: 1919.00 ft (KB)

Total Depth: 2880.00 ft (KB) (TVD)

1914.00 ft (CF)

Hole Diameter: 7.88 inches Hole Condition: Poor

KB to GR/CF: 5.00 ft

**Serial #: 8679 Inside**

Press@RunDepth: 79.47 psig @ 2861.00 ft (KB)

Capacity: 8000.00 psig

Start Date: 2014.08.01

End Date:

2014.08.01

Last Calib.: 2014.08.01

Start Time: 10:42:01

End Time:

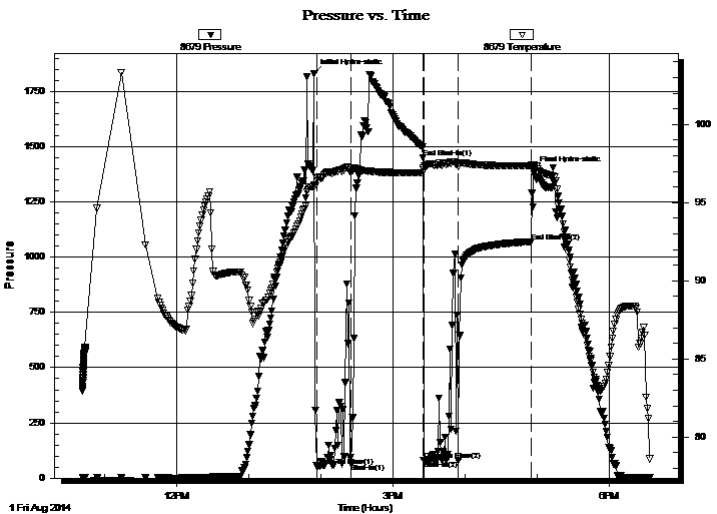
18:34:00

Time On Btm: 2014.08.01 @ 13:54:30

Time Off Btm: 2014.08.01 @ 16:57:00

**TEST COMMENT:** 30-IF-Weak Surface Blow , Died in 14 mins  
 60-ISI-No Return  
 30-FF-Built to 1/4"  
 60-FSI-No Return

## PRESSURE SUMMARY



Time (Min.)	Pressure (psig)	Temp (deg F)	Annotation
0	1831.68	96.13	Initial Hydro-static
2	55.16	96.57	Open To Flow (1)
31	65.63	96.99	Shut-In(1)
91	1450.80	97.20	End Shut-In(1)
91	80.62	97.08	Open To Flow (2)
120	79.47	97.32	Shut-In(2)
181	1069.76	97.36	End Shut-In(2)
183	1388.82	97.39	Final Hydro-static

## Recovery

Length (ft)	Description	Volume (bbl)
100.00	M, 100% m, with oil spots	0.63

## Gas Rates

Choke (inches)	Pressure (psig)	Gas Rate (Mcf/d)



# DRILL STEM TEST REPORT

Murfin Drilling Co. Inc  
 250 N Water Ste 300  
 Wichita, KS 67202  
 ATTN: Jeff Christian

**8-10s-14w Osborne,KS**

**Meyer #1-8**

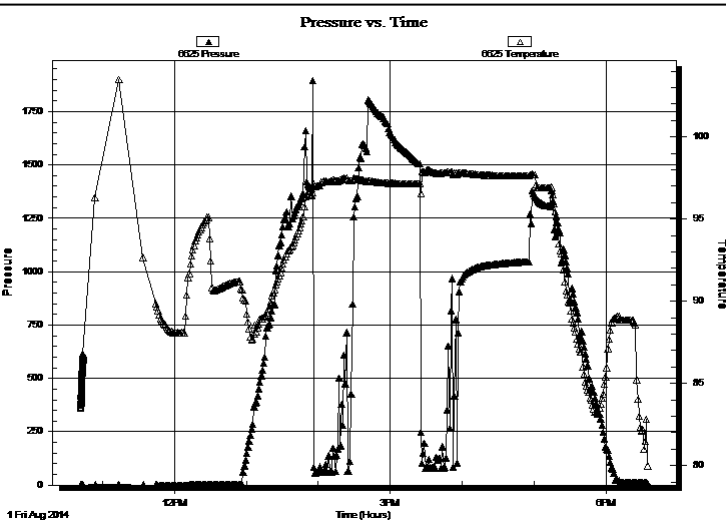
Job Ticket: 59275 **DST#: 1**  
 Test Start: 2014.08.01 @ 10:42:00

## GENERAL INFORMATION:

Formation: **Topeka**  
 Deviated: No Whipstock: ft (KB)  
 Time Tool Opened: 13:56:30  
 Time Test Ended: 18:34:00  
**Interval: 2860.00 ft (KB) To 2880.00 ft (KB) (TVD)**  
 Total Depth: 2880.00 ft (KB) (TVD)  
 Hole Diameter: 7.88 inches Hole Condition: Poor  
 Test Type: Conventional Bottom Hole (Initial)  
 Tester: Phillip Gage  
 Unit No: 58  
 Reference Elevations: 1919.00 ft (KB)  
 1914.00 ft (CF)  
 KB to GR/CF: 5.00 ft

**Serial #: 6625 Outside**  
 Press@RunDepth: psig @ 2861.00 ft (KB) Capacity: 8000.00 psig  
 Start Date: 2014.08.01 End Date: 2014.08.01 Last Calib.: 2014.08.01  
 Start Time: 10:42:01 End Time: 18:35:00 Time On Btm:  
 Time Off Btm:

TEST COMMENT: 30-IF-Weak Surface Blow , Died in 14 mins  
 60-ISI-No Return  
 30-FF-Built to 1/4"  
 60-FSI-No Return



## PRESSURE SUMMARY

Time (Min.)	Pressure (psig)	Temp (deg F)	Annotation

## Recovery

Length (ft)	Description	Volume (bbl)
100.00	M, 100% m, with oil spots	0.63

## Gas Rates

	Choke (inches)	Pressure (psig)	Gas Rate (Mcf/d)



**TRILOBITE  
TESTING, INC**

# DRILL STEM TEST REPORT

**TOOL DIAGRAM**

Murfin Drilling Co. Inc  
250 N Water Ste 300  
Wichita, KS 67202  
ATTN: Jeff Christian

**8-10s-14w Osborne, KS**  
**Meyer #1-8**  
Job Ticket: 59275      **DST#: 1**  
Test Start: 2014.08.01 @ 10:42:00

**Tool Information**

Drill Pipe:	Length: 2775.00 ft	Diameter: 3.80 inches	Volume: 38.93 bbl	Tool Weight: 2000.00 lb
Heavy Wt. Pipe:	Length: 0.00 ft	Diameter: 2.75 inches	Volume: 0.00 bbl	Weight set on Packer: 25000.00 lb
Drill Collar:	Length: 85.00 ft	Diameter: 2.25 inches	Volume: 0.42 bbl	Weight to Pull Loose: 52000.00 lb
			<u>Total Volume: 39.35 bbl</u>	Tool Chased 0.00 ft
Drill Pipe Above KB:	20.00 ft			String Weight: Initial 46000.00 lb
Depth to Top Packer:	2860.00 ft			Final 47000.00 lb
Depth to Bottom Packer:	ft			
Interval between Packers:	20.00 ft			
Tool Length:	40.00 ft			
Number of Packers:	2	Diameter: 6.75 inches		

Tool Comments:

<b>Tool Description</b>	<b>Length (ft)</b>	<b>Serial No.</b>	<b>Position</b>	<b>Depth (ft)</b>	<b>Accum. Lengths</b>
-------------------------	--------------------	-------------------	-----------------	-------------------	-----------------------

Change Over Sub	1.00			2841.00	
Shut In Tool	5.00			2846.00	
Hydraulic tool	5.00			2851.00	
Packer	5.00			2856.00	20.00      Bottom Of Top Packer
Packer	4.00			2860.00	
Stubb	1.00			2861.00	
Recorder	0.00	6625	Outside	2861.00	
Recorder	0.00	8679	Inside	2861.00	
Perforations	15.00			2876.00	
Bullnose	4.00			2880.00	20.00      Bottom Packers & Anchor
<b>Total Tool Length:</b>	<b>40.00</b>				



**TRILOBITE  
TESTING, INC**

# DRILL STEM TEST REPORT

**FLUID SUMMARY**

Murfin Drilling Co. Inc  
250 N Water Ste 300  
Wichita, KS 67202  
ATTN: Jeff Christian

**8-10s-14w Osborne, KS**  
**Meyer #1-8**  
Job Ticket: 59275      **DST#: 1**  
Test Start: 2014.08.01 @ 10:42:00

## Mud and Cushion Information

Mud Type: Gel Chem	Cushion Type:	Oil API:	deg API
Mud Weight: 9.00 lb/gal	Cushion Length: ft	Water Salinity:	ppm
Viscosity: 79.00 sec/qt	Cushion Volume: bbl		
Water Loss: 5.19 in <sup>3</sup>	Gas Cushion Type:		
Resistivity: ohm.m	Gas Cushion Pressure: psig		
Salinity: 1600.00 ppm			
Filter Cake: 2.00 inches			

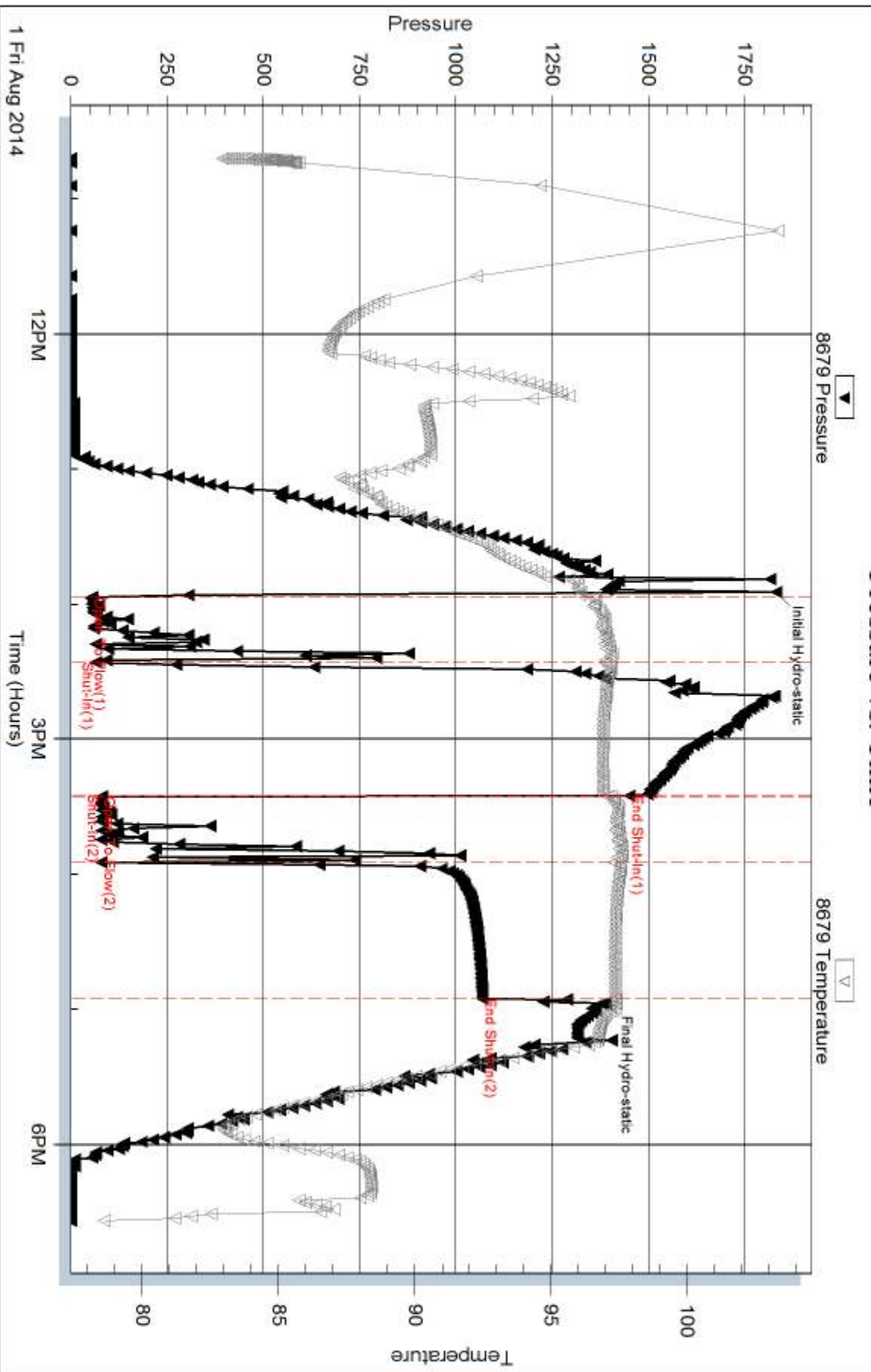
## Recovery Information

Recovery Table

Length ft	Description	Volume bbl
100.00	M, 100% m, with oil spots	0.628

Total Length: 100.00 ft      Total Volume: 0.628 bbl  
Num Fluid Samples: 0      Num Gas Bombs: 0      Serial #:  
Laboratory Name:      Laboratory Location:  
Recovery Comments:

### Pressure vs. Time

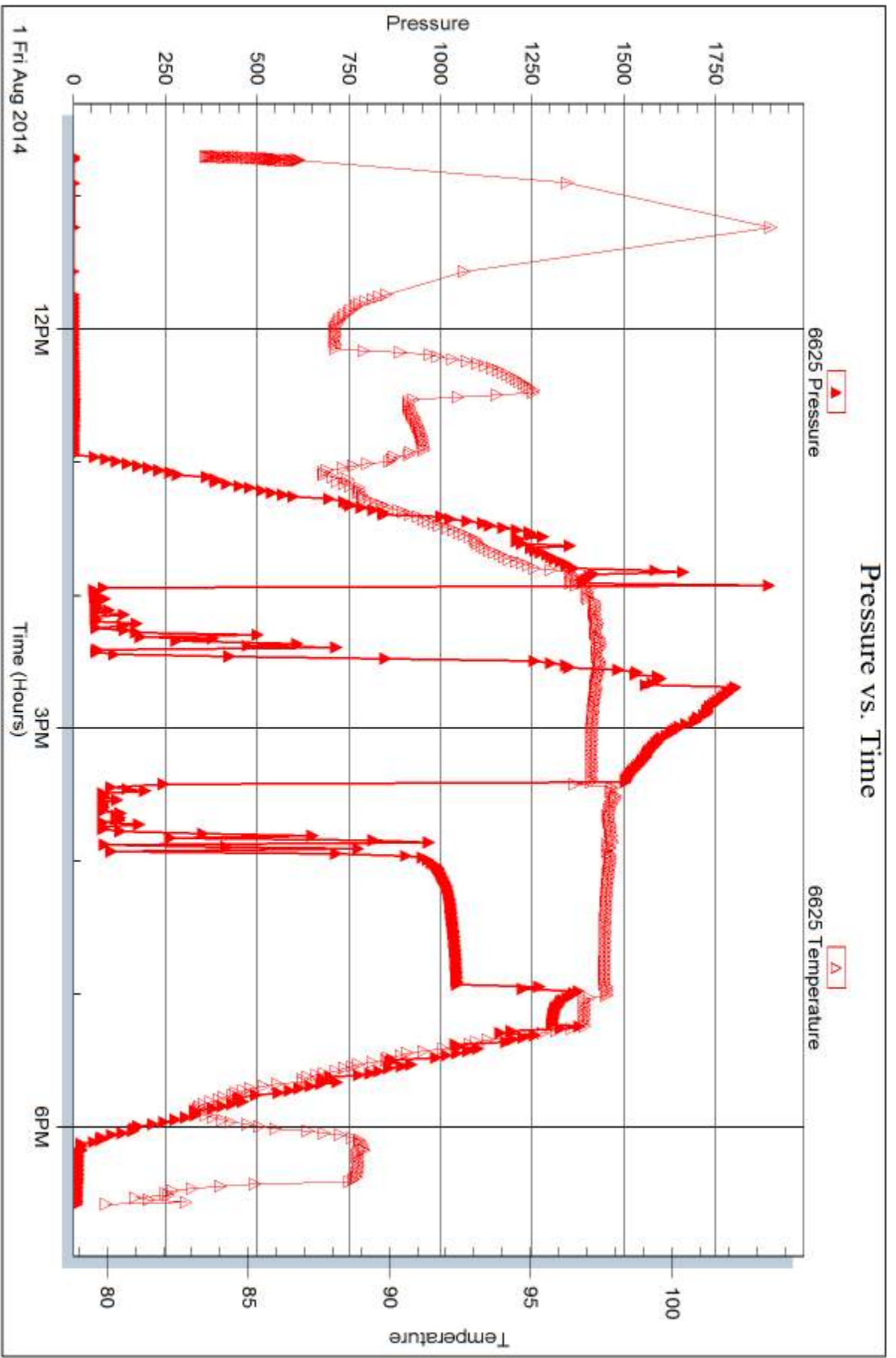


Serial #: 6625

Outside Murfin Drilling Co. Inc

Meyer #1-8

DST Test Number: 1



Trilobite Testing, Inc

Ref. No: 59275

Printed: 2014.08.06 @ 10:43:05



## DRILL STEM TEST REPORT

Prepared For: **Murfin Drilling Co. Inc**

250 N Water Ste 300  
Wichita, KS 67202

ATTN: Jeff Christian

### **Meyer #1-8**

#### **8-10s-14w Osborne,KS**

Start Date: 2014.08.01 @ 21:57:00

End Date: 2014.08.02 @ 05:58:00

Job Ticket #: 58726                      DST #: 2

Trilobite Testing, Inc  
1515 Commerce Parkway Hays, KS 67601  
ph: 785-625-4778 fax: 785-625-5620

Printed: 2014.08.06 @ 10:43:45





**TRILOBITE  
TESTING, INC**

# DRILL STEM TEST REPORT

Murfin Drilling Co. Inc  
250 N Water Ste 300  
Wichita, KS 67202  
ATTN: Jeff Christian

**8-10s-14w Osborne, KS**

**Meyer #1-8**

Job Ticket: 58726

**DST#: 2**

Test Start: 2014.08.01 @ 21:57:00

## GENERAL INFORMATION:

Formation: **Topeka**

Deviated: No Whipstock: ft (KB)

Time Tool Opened: 00:33:00

Time Test Ended: 05:58:00

Test Type: Conventional Bottom Hole (Reset)

Tester: Phillip Gage

Unit No: 58

**Interval: 2857.00 ft (KB) To 2880.00 ft (KB) (TVD)**

Reference Elevations: 1919.00 ft (KB)

Total Depth: 2880.00 ft (KB) (TVD)

1914.00 ft (CF)

Hole Diameter: 7.88 inches Hole Condition: Fair

KB to GR/CF: 5.00 ft

**Serial #: 8679**

**Inside**

Press@RunDepth: 41.62 psig @ 2858.00 ft (KB)

Capacity: 8000.00 psig

Start Date: 2014.08.01

End Date:

2014.08.02

Last Calib.:

2014.08.02

Start Time: 21:57:01

End Time:

05:58:00

Time On Btm:

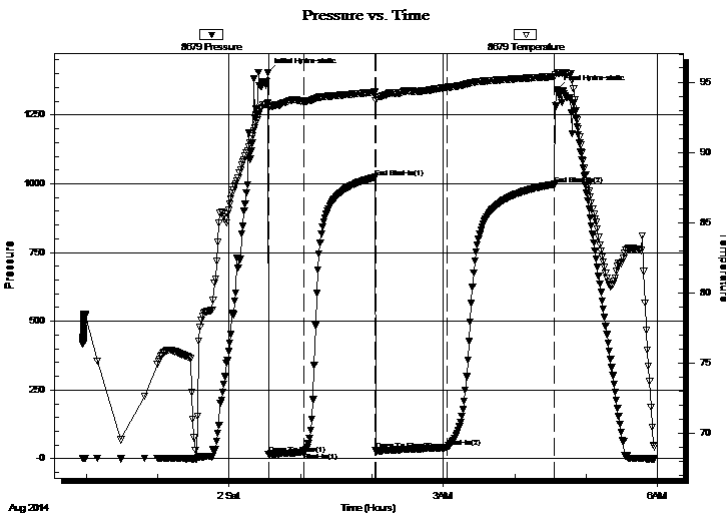
2014.08.02 @ 00:32:30

Time Off Btm:

2014.08.02 @ 04:35:30

**TEST COMMENT:** 30-IF-Built to 1 1/2"  
60-ISI-No Return  
60-FF-Surface blow started at 8 mins, built to 1 1/4"  
90-FSI-No Return

## PRESSURE SUMMARY



Time (Min.)	Pressure (psig)	Temp (deg F)	Annotation
0	1403.03	93.51	Initial Hydro-static
1	17.57	93.21	Open To Flow (1)
31	24.87	93.65	Shut-In(1)
90	1023.26	94.29	End Shut-In(1)
91	29.50	93.70	Open To Flow (2)
151	41.62	94.64	Shut-In(2)
241	998.32	95.40	End Shut-In(2)
243	1343.20	95.66	Final Hydro-static

## Recovery

Length (ft)	Description	Volume (bbl)
60.00	SOCM, 10%o, 90%m	0.30

## Gas Rates

	Choke (inches)	Pressure (psig)	Gas Rate (Mcf/d)

\* Recovery from multiple tests



# DRILL STEM TEST REPORT

Murfin Drilling Co. Inc  
 250 N Water Ste 300  
 Wichita, KS 67202  
 ATTN: Jeff Christian

**8-10s-14w Osborne, KS**

**Meyer #1-8**

Job Ticket: 58726

**DST#: 2**

Test Start: 2014.08.01 @ 21:57:00

## GENERAL INFORMATION:

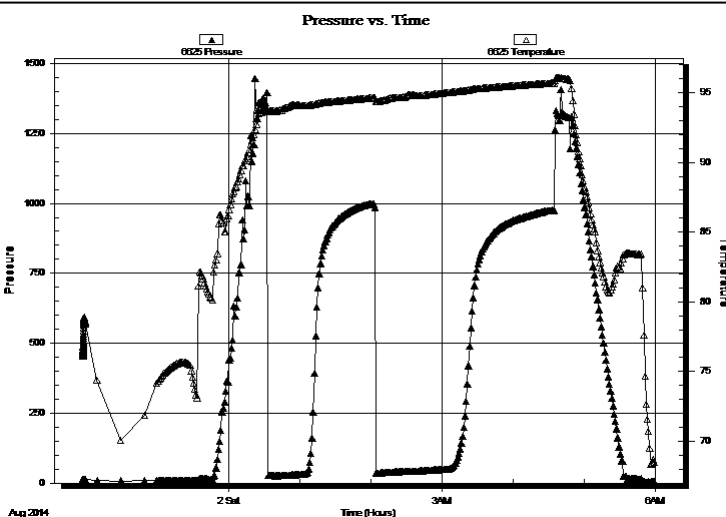
Formation: **Topeka**  
 Deviated: No Whipstock: ft (KB)  
 Test Type: Conventional Bottom Hole (Reset)  
 Time Tool Opened: 00:33:00  
 Tester: Phillip Gage  
 Time Test Ended: 05:58:00  
 Unit No: 58  
**Interval: 2857.00 ft (KB) To 2880.00 ft (KB) (TVD)**  
 Reference Elevations: 1919.00 ft (KB)  
 Total Depth: 2880.00 ft (KB) (TVD)  
 1914.00 ft (CF)  
 Hole Diameter: 7.88 inches  
 Hole Condition: Fair  
 KB to GR/CF: 5.00 ft

**Serial #: 6625**

**Outside**

Press@RunDepth: psig @ 2858.00 ft (KB) Capacity: 8000.00 psig  
 Start Date: 2014.08.01 End Date: 2014.08.02 Last Calib.: 2014.08.02  
 Start Time: 21:57:01 End Time: 05:59:30 Time On Btm:  
 Time Off Btm:

TEST COMMENT: 30-IF-Built to 1 1/2"  
 60-ISI-No Return  
 60-FF-Surface blow started at 8 mins, built to 1 1/4"  
 90-FSI-No Return



## PRESSURE SUMMARY

Time (Min.)	Pressure (psig)	Temp (deg F)	Annotation

## Recovery

Length (ft)	Description	Volume (bbl)
60.00	SOCM, 10%o, 90%m	0.30

\* Recovery from multiple tests

## Gas Rates

Choke (inches)	Pressure (psig)	Gas Rate (Mcf/d)



**TRILOBITE  
TESTING, INC**

# DRILL STEM TEST REPORT

**TOOL DIAGRAM**

Murfin Drilling Co. Inc  
250 N Water Ste 300  
Wichita, KS 67202  
ATTN: Jeff Christian

**8-10s-14w Osborne, KS**  
**Meyer #1-8**  
Job Ticket: 58726      **DST#: 2**  
Test Start: 2014.08.01 @ 21:57:00

**Tool Information**

Drill Pipe:	Length: 2775.00 ft	Diameter: 3.80 inches	Volume: 38.93 bbl	Tool Weight:	2000.00 lb
Heavy Wt. Pipe:	Length: 0.00 ft	Diameter: 2.75 inches	Volume: 0.00 bbl	Weight set on Packer:	25000.00 lb
Drill Collar:	Length: 85.00 ft	Diameter: 2.25 inches	Volume: 0.42 bbl	Weight to Pull Loose:	46000.00 lb
			<u>Total Volume: 39.35 bbl</u>	Tool Chased	0.00 ft
Drill Pipe Above KB:	23.00 ft			String Weight: Initial	46000.00 lb
Depth to Top Packer:	2857.00 ft			Final	46000.00 lb
Depth to Bottom Packer:	ft				
Interval between Packers:	23.00 ft				
Tool Length:	43.00 ft				
Number of Packers:	2	Diameter: 6.75 inches			

Tool Comments:

<b>Tool Description</b>	<b>Length (ft)</b>	<b>Serial No.</b>	<b>Position</b>	<b>Depth (ft)</b>	<b>Accum. Lengths</b>
-------------------------	--------------------	-------------------	-----------------	-------------------	-----------------------

Change Over Sub	1.00			2838.00	
Shut In Tool	5.00			2843.00	
Hydraulic tool	5.00			2848.00	
Packer	5.00			2853.00	20.00      Bottom Of Top Packer
Packer	4.00			2857.00	
Stubb	1.00			2858.00	
Recorder	0.00	6625	Outside	2858.00	
Recorder	0.00	8679	Inside	2858.00	
Perforations	18.00			2876.00	
Bullnose	4.00			2880.00	23.00      Bottom Packers & Anchor
<b>Total Tool Length:</b>	<b>43.00</b>				



**TRILOBITE  
TESTING, INC**

# DRILL STEM TEST REPORT

**FLUID SUMMARY**

Murfin Drilling Co. Inc  
250 N Water Ste 300  
Wichita, KS 67202  
ATTN: Jeff Christian

**8-10s-14w Osborne,KS**  
**Meyer #1-8**  
Job Ticket: 58726      **DST#: 2**  
Test Start: 2014.08.01 @ 21:57:00

## Mud and Cushion Information

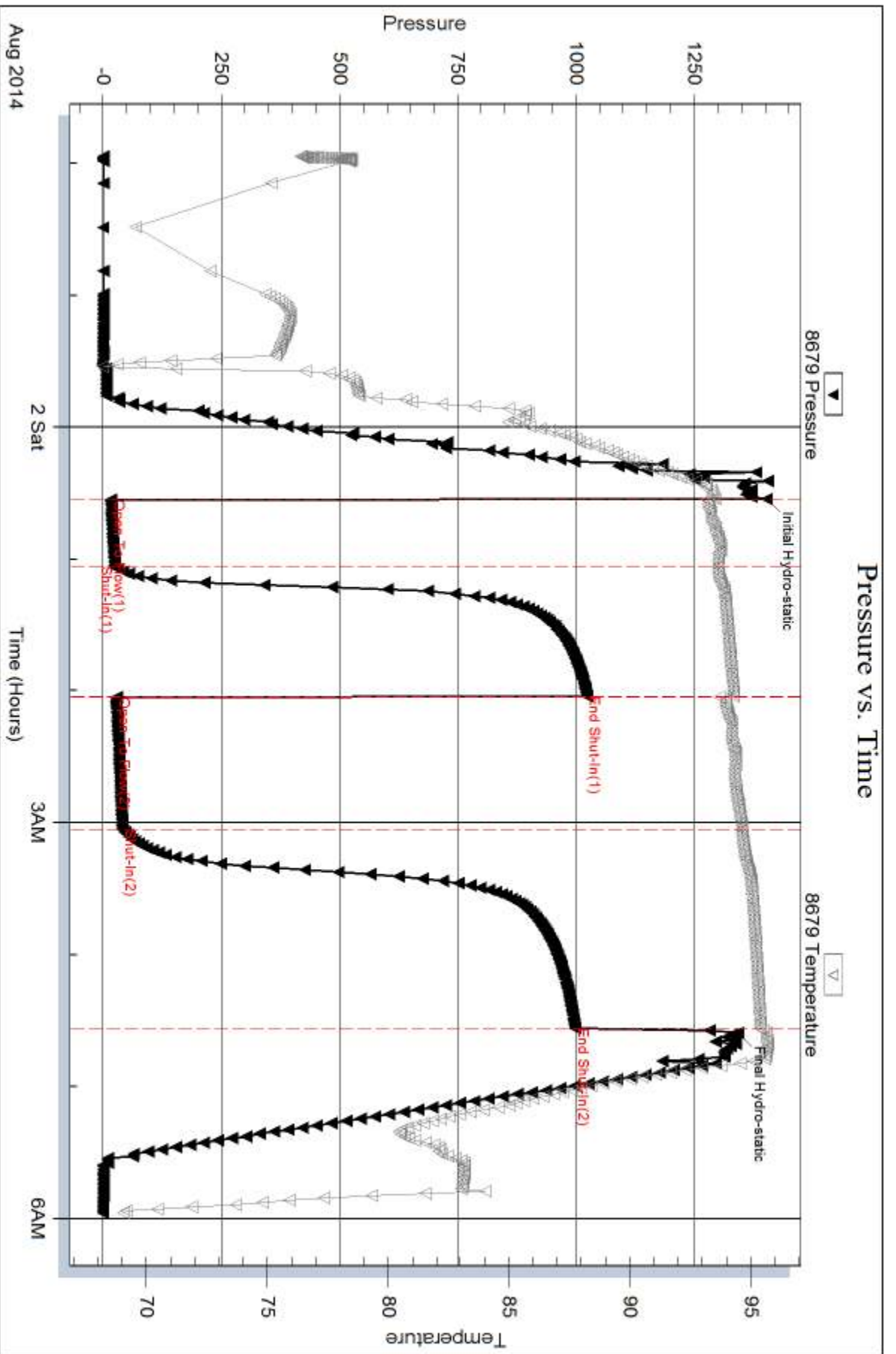
Mud Type: Gel Chem	Cushion Type:	Oil API:	deg API
Mud Weight: 9.00 lb/gal	Cushion Length: ft	Water Salinity:	ppm
Viscosity: 79.00 sec/qt	Cushion Volume: bbl		
Water Loss: 5.19 in <sup>3</sup>	Gas Cushion Type:		
Resistivity: ohm.m	Gas Cushion Pressure: psig		
Salinity: 1600.00 ppm			
Filter Cake: 2.00 inches			

## Recovery Information

Recovery Table

Length ft	Description	Volume bbl
60.00	SOCM, 10%o, 90%m	0.295

Total Length: 60.00 ft      Total Volume: 0.295 bbl  
Num Fluid Samples: 0      Num Gas Bombs: 0      Serial #:  
Laboratory Name:      Laboratory Location:  
Recovery Comments:

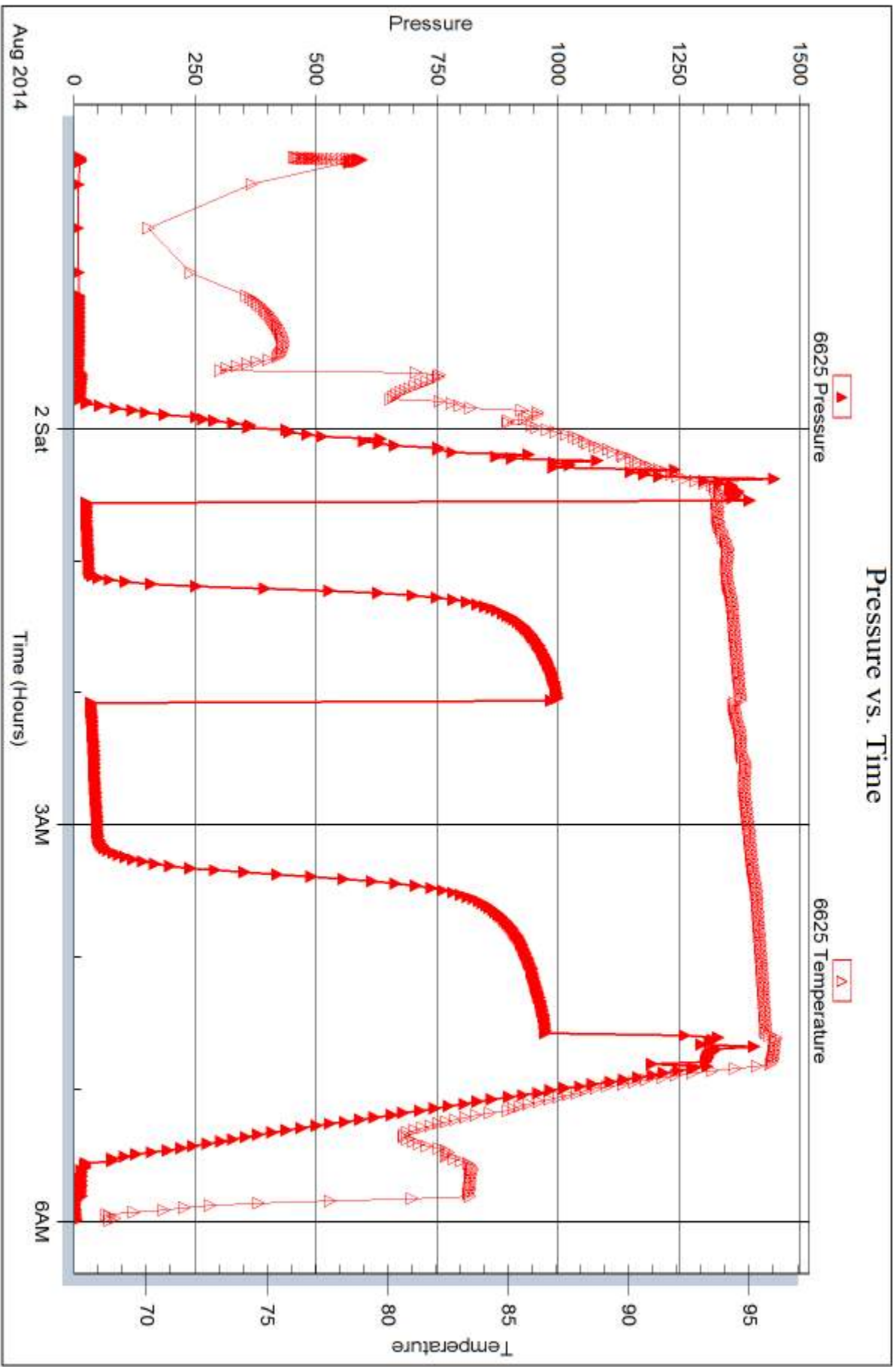


Serial #: 6625

Outside Murfin Drilling Co. Inc

Meyer #1-8

DST Test Number: 2



Trilobite Testing, Inc

Ref. No: 58726

Printed: 2014.08.06 @ 10:43:46



## DRILL STEM TEST REPORT

Prepared For: **Murfin Drilling Co. Inc**

250 N Water Ste 300  
Wichita, KS 67202

ATTN: Jeff Christian

### **Meyer #1-8**

#### **8-10s-14w Osborne,KS**

Start Date: 2014.08.02 @ 16:29:00

End Date: 2014.08.02 @ 22:49:00

Job Ticket #: 58727                      DST #: 3

Trilobite Testing, Inc  
1515 Commerce Parkway Hays, KS 67601  
ph: 785-625-4778 fax: 785-625-5620

Printed: 2014.08.06 @ 10:28:04



**TRILOBITE  
TESTING, INC**

# DRILL STEM TEST REPORT

Murfin Drilling Co. Inc  
250 N Water Ste 300  
Wichita, KS 67202  
ATTN: Jeff Christian

**8-10s-14w Osborne, KS**

**Meyer #1-8**

Job Ticket: 58727

**DST#: 3**

Test Start: 2014.08.02 @ 16:29:00

## GENERAL INFORMATION:

Formation: **Lecompton**  
Deviated: No Whipstock: ft (KB)  
Test Type: Conventional Bottom Hole (Reset)  
Time Tool Opened: 18:21:30 Tester: Phillip Gage  
Time Test Ended: 22:49:00 Unit No: 58  
Interval: **2953.00 ft (KB) To 3021.00 ft (KB) (TVD)** Reference Elevations: 1919.00 ft (KB)  
Total Depth: 3021.00 ft (KB) (TVD) 1914.00 ft (CF)  
Hole Diameter: 7.88 inches Hole Condition: Fair KB to GR/CF: 5.00 ft

## Serial #: 8679

**Inside**

Press@RunDepth: 23.90 psig @ 2954.00 ft (KB) Capacity: 8000.00 psig  
Start Date: 2014.08.02 End Date: 2014.08.02 Last Calib.: 2014.08.02  
Start Time: 16:29:01 End Time: 22:49:00 Time On Btm: 2014.08.02 @ 18:21:00  
Time Off Btm: 2014.08.02 @ 21:23:30

TEST COMMENT: 30-IF-Built to 1/8", died in 27 mins  
60-ISI-No Return  
30-FF-No Blow  
60-FSI-No Return

## PRESSURE SUMMARY

Time (Min.)	Pressure (psig)	Temp (deg F)	Annotation
0	1458.33	97.45	Initial Hydro-static
1	16.86	97.00	Open To Flow (1)
30	19.44	97.35	Shut-In(1)
90	1004.42	98.05	End Shut-In(1)
90	20.31	97.68	Open To Flow (2)
121	23.90	97.96	Shut-In(2)
182	943.97	98.45	End Shut-In(2)
183	1511.59	98.60	Final Hydro-static

## Recovery

Length (ft)	Description	Volume (bbl)
5.00	M, 100%m	0.02

\* Recovery from multiple tests

## Gas Rates

	Choke (inches)	Pressure (psig)	Gas Rate (Mcf/d)





**TRILOBITE  
TESTING, INC**

# DRILL STEM TEST REPORT

Murfin Drilling Co. Inc  
250 N Water Ste 300  
Wichita, KS 67202  
ATTN: Jeff Christian

**8-10s-14w Osborne, KS**  
**Meyer #1-8**  
Job Ticket: 58727 **DST#: 3**  
Test Start: 2014.08.02 @ 16:29:00

## GENERAL INFORMATION:

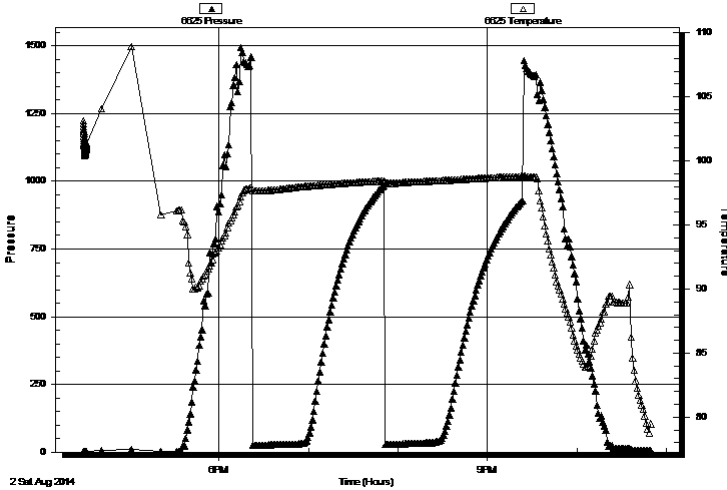
Formation: <b>Lecompton</b>			
Deviated: No Whipstock:	ft (KB)	Test Type: Conventional Bottom Hole (Reset)	
Time Tool Opened: 18:21:30		Tester: Phillip Gage	
Time Test Ended: 22:49:00		Unit No: 58	
<b>Interval: 2953.00 ft (KB) To 3021.00 ft (KB) (TVD)</b>		Reference Elevations: 1919.00 ft (KB)	
Total Depth: 3021.00 ft (KB) (TVD)		1914.00 ft (CF)	
Hole Diameter: 7.88 inches	Hole Condition: Fair	KB to GR/CF: 5.00 ft	

## Serial #: 6625 Outside

Press@RunDepth: psig @ 2954.00 ft (KB)	Capacity: 8000.00 psig
Start Date: 2014.08.02	End Date: 2014.08.02
Start Time: 16:29:01	End Time: 22:50:00
	Last Calib.: 2014.08.02
	Time On Btm:
	Time Off Btm:

TEST COMMENT: 30-IF-Built to 1/8", died in 27 mins  
60-ISI-No Return  
30-FF-No Blow  
60-FSI-No Return

Pressure vs. Time



## PRESSURE SUMMARY

Time (Min.)	Pressure (psig)	Temp (deg F)	Annotation

## Recovery

Length (ft)	Description	Volume (bbl)
5.00	M, 100%m	0.02

\* Recovery from multiple tests

## Gas Rates

Choke (inches)	Pressure (psig)	Gas Rate (Mcf/d)



**TRILOBITE  
TESTING, INC**

# DRILL STEM TEST REPORT

**TOOL DIAGRAM**

Murfin Drilling Co. Inc  
250 N Water Ste 300  
Wichita, KS 67202  
ATTN: Jeff Christian

**8-10s-14w Osborne, KS**  
**Meyer #1-8**  
Job Ticket: 58727      **DST#: 3**  
Test Start: 2014.08.02 @ 16:29:00

**Tool Information**

Drill Pipe:	Length: 2869.00 ft	Diameter: 3.80 inches	Volume: 40.24 bbl	Tool Weight: 2000.00 lb
Heavy Wt. Pipe:	Length: 0.00 ft	Diameter: 2.75 inches	Volume: 0.00 bbl	Weight set on Packer: 25000.00 lb
Drill Collar:	Length: 85.00 ft	Diameter: 2.25 inches	Volume: 0.42 bbl	Weight to Pull Loose: 50000.00 lb
			<u>Total Volume: 40.66 bbl</u>	Tool Chased 0.00 ft
Drill Pipe Above KB:	21.00 ft			String Weight: Initial 49000.00 lb
Depth to Top Packer:	2953.00 ft			Final 49000.00 lb
Depth to Bottom Packer:	ft			
Interval between Packers:	68.00 ft			
Tool Length:	88.00 ft			
Number of Packers:	2	Diameter: 6.75 inches		

Tool Comments:

<b>Tool Description</b>	<b>Length (ft)</b>	<b>Serial No.</b>	<b>Position</b>	<b>Depth (ft)</b>	<b>Accum. Lengths</b>
-------------------------	--------------------	-------------------	-----------------	-------------------	-----------------------

Change Over Sub	1.00			2934.00	
Shut In Tool	5.00			2939.00	
Hydraulic tool	5.00			2944.00	
Packer	5.00			2949.00	20.00      Bottom Of Top Packer
Packer	4.00			2953.00	
Stubb	1.00			2954.00	
Recorder	0.00	6625	Outside	2954.00	
Recorder	0.00	8679	Inside	2954.00	
Perforations	30.00			2984.00	
Change Over Sub	1.00			2985.00	
Drill Pipe	31.00			3016.00	
Change Over Sub	1.00			3017.00	
Bullnose	4.00			3021.00	68.00      Bottom Packers & Anchor

**Total Tool Length: 88.00**



**TRILOBITE  
TESTING, INC**

# DRILL STEM TEST REPORT

## FLUID SUMMARY

Murfin Drilling Co. Inc  
250 N Water Ste 300  
Wichita, KS 67202  
ATTN: Jeff Christian

**8-10s-14w Osborne,KS**  
**Meyer #1-8**  
Job Ticket: 58727      **DST#: 3**  
Test Start: 2014.08.02 @ 16:29:00

### Mud and Cushion Information

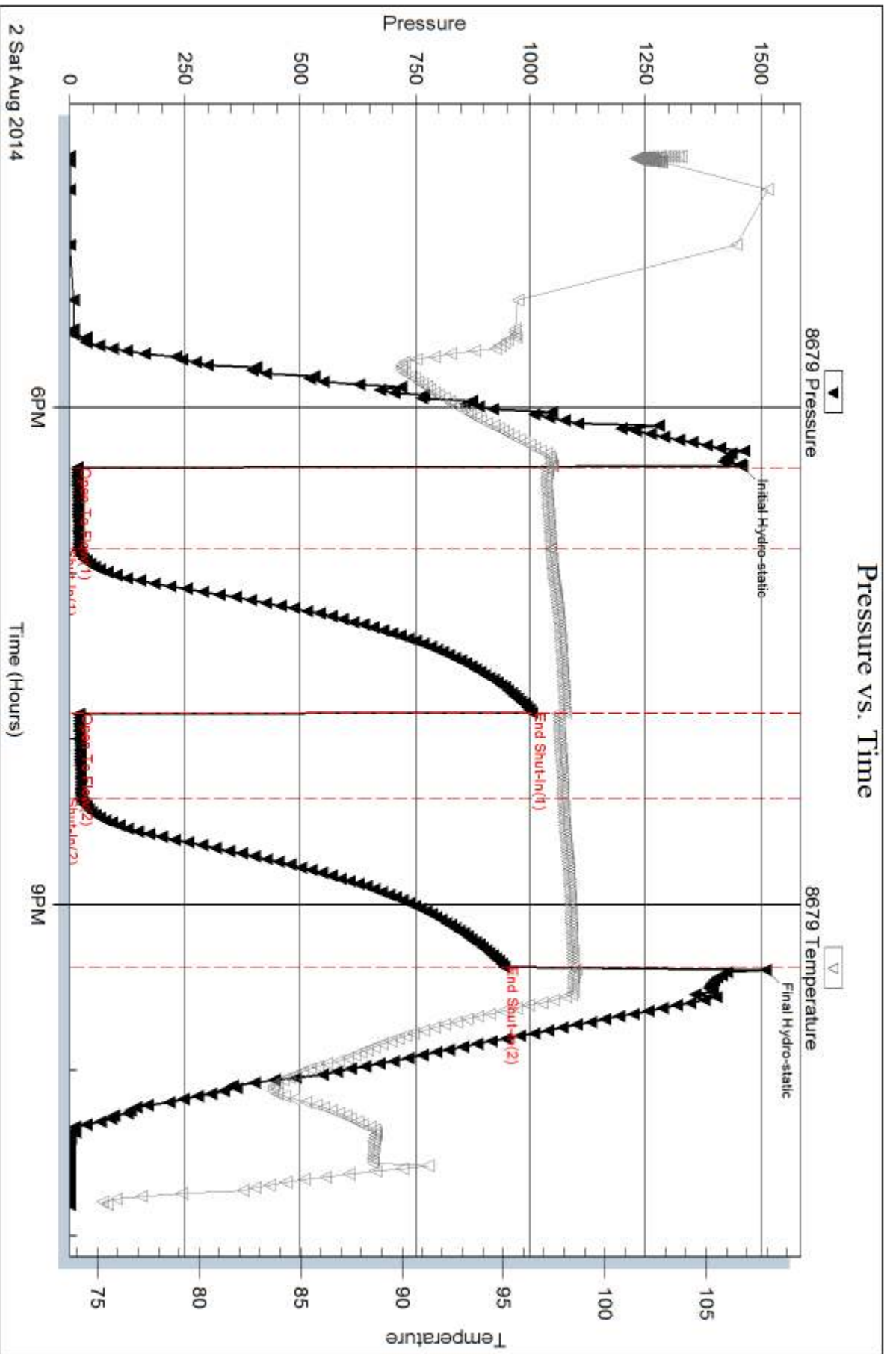
Mud Type: Gel Chem	Cushion Type:	Oil API:	deg API
Mud Weight: 9.00 lb/gal	Cushion Length: ft	Water Salinity:	ppm
Viscosity: 84.00 sec/qt	Cushion Volume: bbl		
Water Loss: 5.19 in <sup>3</sup>	Gas Cushion Type:		
Resistivity: ohm.m	Gas Cushion Pressure: psig		
Salinity: 2800.00 ppm			
Filter Cake: 2.00 inches			

### Recovery Information

Recovery Table

Length ft	Description	Volume bbl
5.00	M, 100%m	0.025

Total Length: 5.00 ft      Total Volume: 0.025 bbl  
Num Fluid Samples: 0      Num Gas Bombs: 0      Serial #:  
Laboratory Name:      Laboratory Location:  
Recovery Comments:

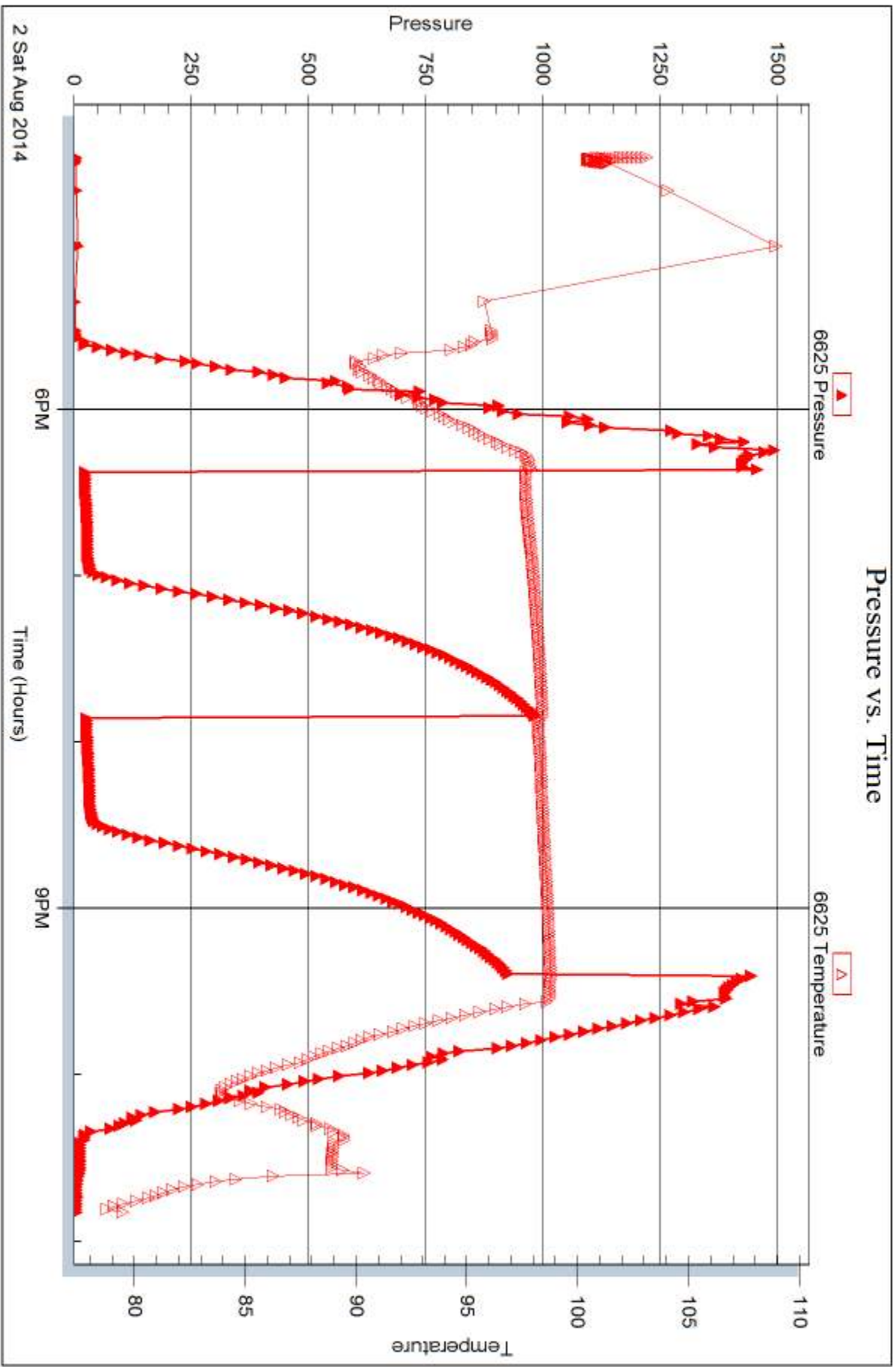


Serial #: 6625

Outside Murfin Drilling Co. Inc

Meyer #1-8

DST Test Number: 3



Trilobite Testing, Inc

Ref. No: 58727

Printed: 2014.08.06 @ 10:28:07



## DRILL STEM TEST REPORT

Prepared For: **Murfin Drilling Co. Inc**

250 N Water Ste 300  
Wichita, KS 67202

ATTN: Jeff Christian

### **Meyer #1-8**

#### **8-10s-14w Osborne,KS**

Start Date: 2014.08.03 @ 14:41:00

End Date: 2014.08.03 @ 23:13:30

Job Ticket #: 58728                      DST #: 4

Trilobite Testing, Inc  
1515 Commerce Parkway Hays, KS 67601  
ph: 785-625-4778 fax: 785-625-5620

Printed: 2014.08.06 @ 10:27:24



**TRILOBITE  
TESTING, INC**

# DRILL STEM TEST REPORT

Murfin Drilling Co. Inc  
250 N Water Ste 300  
Wichita, KS 67202  
ATTN: Jeff Christian

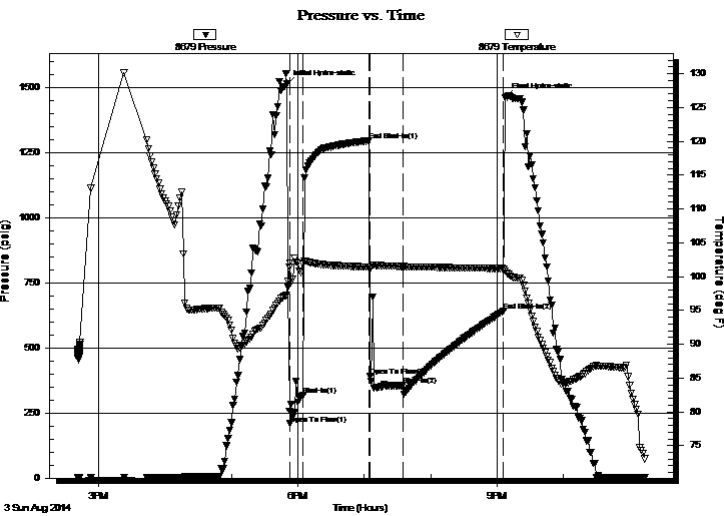
**8-10s-14w Osborne, KS**  
**Meyer #1-8**  
Job Ticket: 58728      **DST#: 4**  
Test Start: 2014.08.03 @ 14:41:00

## GENERAL INFORMATION:

Formation: **LKC "A-D"**  
Deviated: No Whipstock: ft (KB)  
Time Tool Opened: 17:53:00  
Time Test Ended: 23:13:30  
Interval: **3114.00 ft (KB) To 3200.00 ft (KB) (TVD)**  
Total Depth: 3200.00 ft (KB) (TVD)  
Hole Diameter: 7.88 inches Hole Condition: Fair  
Reference Elevations: 1919.00 ft (KB)  
1914.00 ft (CF)  
KB to GR/CF: 5.00 ft  
Test Type: Conventional Bottom Hole (Reset)  
Tester: Phillip Gage  
Unit No: 58

**Serial #: 8679      Inside**  
Press@RunDepth: 355.96 psig @ 3115.00 ft (KB)      Capacity: 8000.00 psig  
Start Date: 2014.08.03      End Date: 2014.08.03      Last Calib.: 2014.08.03  
Start Time: 14:41:01      End Time: 23:13:30      Time On Btm: 2014.08.03 @ 17:50:00  
Time Off Btm: 2014.08.03 @ 21:07:30

TEST COMMENT: 15-IF-BOB in 30 secs.  
60-ISI-No Return  
30-FF-Built to 10", died back to 8"  
90-FSI-No Return



## PRESSURE SUMMARY

Time (Min.)	Pressure (psig)	Temp (deg F)	Annotation
0	1514.20	97.18	Initial Hydro-static
3	208.61	101.98	Open To Flow (1)
15	318.21	101.77	Shut-In(1)
75	1296.21	101.41	End Shut-In(1)
76	392.43	101.42	Open To Flow (2)
105	355.96	101.49	Shut-In(2)
196	641.73	101.17	End Shut-In(2)
198	1463.83	100.79	Final Hydro-static

## Recovery

Length (ft)	Description	Volume (bbl)
692.00	M, 100% m, with oil spots	8.93

\* Recovery from multiple tests

## Gas Rates

Choke (inches)	Pressure (psig)	Gas Rate (Mcf/d)



TRILOBITE TESTING, INC

# DRILL STEM TEST REPORT

Murfin Drilling Co. Inc  
250 N Water Ste 300  
Wichita, KS 67202  
ATTN: Jeff Christian

8-10s-14w Osborne, KS

Meyer #1-8

Job Ticket: 58728

DST#: 4

Test Start: 2014.08.03 @ 14:41:00

## GENERAL INFORMATION:

Formation: LKC "A-D"

Deviated: No Whipstock: ft (KB)

Time Tool Opened: 17:53:00

Time Test Ended: 23:13:30

Test Type: Conventional Bottom Hole (Reset)

Tester: Phillip Gage

Unit No: 58

Interval: 3114.00 ft (KB) To 3200.00 ft (KB) (TVD)

Total Depth: 3200.00 ft (KB) (TVD)

Hole Diameter: 7.88 inches Hole Condition: Fair

Reference Elevations: 1919.00 ft (KB)

1914.00 ft (CF)

KB to GR/CF: 5.00 ft

Serial #: 6625 Outside

Press@RunDepth: psig @ 3115.00 ft (KB)

Start Date: 2014.08.03 End Date: 2014.08.03

Start Time: 14:41:01 End Time: 23:15:00

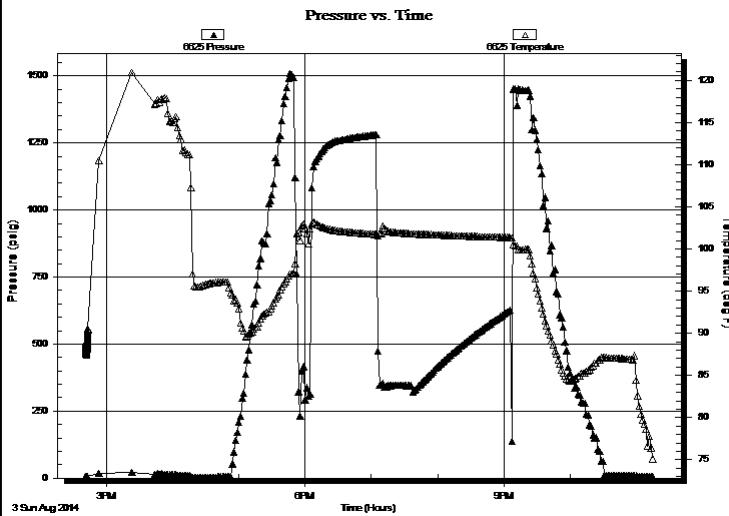
Capacity: 8000.00 psig

Last Calib.: 2014.08.03

Time On Btm:

Time Off Btm:

TEST COMMENT: 15-IF-BOB in 30 secs.  
60-ISI-No Return  
30-FF-Built to 10", died back to 8"  
90-FSI-No Return



## PRESSURE SUMMARY

Time (Min.)	Pressure (psig)	Temp (deg F)	Annotation

## Recovery

Length (ft)	Description	Volume (bbl)
692.00	M, 100%m, w with oil spots	8.93

\* Recovery from multiple tests

## Gas Rates

Choke (inches)	Pressure (psig)	Gas Rate (Mcf/d)





**TRILOBITE  
TESTING, INC**

# DRILL STEM TEST REPORT

**TOOL DIAGRAM**

Murfin Drilling Co. Inc  
250 N Water Ste 300  
Wichita, KS 67202  
ATTN: Jeff Christian

**8-10s-14w Osborne,KS**  
**Meyer #1-8**  
Job Ticket: 58728      **DST#: 4**  
Test Start: 2014.08.03 @ 14:41:00

**Tool Information**

Drill Pipe:	Length: 3026.00 ft	Diameter: 3.80 inches	Volume: 42.45 bbl	Tool Weight:	2000.00 lb
Heavy Wt. Pipe:	Length: 0.00 ft	Diameter: 2.75 inches	Volume: 0.00 bbl	Weight set on Packer:	25000.00 lb
Drill Collar:	Length: 85.00 ft	Diameter: 2.25 inches	Volume: 0.42 bbl	Weight to Pull Loose:	53000.00 lb
			<u>Total Volume: 42.87 bbl</u>	Tool Chased	0.00 ft
Drill Pipe Above KB:	17.00 ft			String Weight: Initial	50000.00 lb
Depth to Top Packer:	3114.00 ft			Final	53000.00 lb
Depth to Bottom Packer:	ft				
Interval between Packers:	86.00 ft				
Tool Length:	106.00 ft				
Number of Packers:	2	Diameter: 6.75 inches			

Tool Comments:

<b>Tool Description</b>	<b>Length (ft)</b>	<b>Serial No.</b>	<b>Position</b>	<b>Depth (ft)</b>	<b>Accum. Lengths</b>
-------------------------	--------------------	-------------------	-----------------	-------------------	-----------------------

Change Over Sub	1.00			3095.00	
Shut In Tool	5.00			3100.00	
Hydraulic tool	5.00			3105.00	
Packer	5.00			3110.00	20.00      Bottom Of Top Packer
Packer	4.00			3114.00	
Stubb	1.00			3115.00	
Recorder	0.00	6625	Outside	3115.00	
Recorder	0.00	8679	Inside	3115.00	
Perforations	16.00			3131.00	
Change Over Sub	1.00			3132.00	
Drill Pipe	63.00			3195.00	
Change Over Sub	1.00			3196.00	
Bullnose	4.00			3200.00	86.00      Bottom Packers & Anchor

**Total Tool Length: 106.00**



**TRILOBITE  
TESTING, INC**

# DRILL STEM TEST REPORT

## FLUID SUMMARY

Murfin Drilling Co. Inc  
250 N Water Ste 300  
Wichita, KS 67202  
ATTN: Jeff Christian

**8-10s-14w Osborne, KS**  
**Meyer #1-8**  
Job Ticket: 58728      **DST#: 4**  
Test Start: 2014.08.03 @ 14:41:00

### Mud and Cushion Information

Mud Type: Gel Chem	Cushion Type:	Oil API:	deg API
Mud Weight: 9.00 lb/gal	Cushion Length: ft	Water Salinity:	ppm
Viscosity: 79.00 sec/qt	Cushion Volume: bbl		
Water Loss: 5.99 in <sup>3</sup>	Gas Cushion Type:		
Resistivity: ohm.m	Gas Cushion Pressure: psig		
Salinity: 4400.00 ppm			
Filter Cake: 2.00 inches			

### Recovery Information

Recovery Table

Length ft	Description	Volume bbl
692.00	M, 100% m, with oil spots	8.933

Total Length: 692.00 ft      Total Volume: 8.933 bbl  
Num Fluid Samples: 0      Num Gas Bombs: 0      Serial #:  
Laboratory Name:      Laboratory Location:  
Recovery Comments:

Serial #: 8679

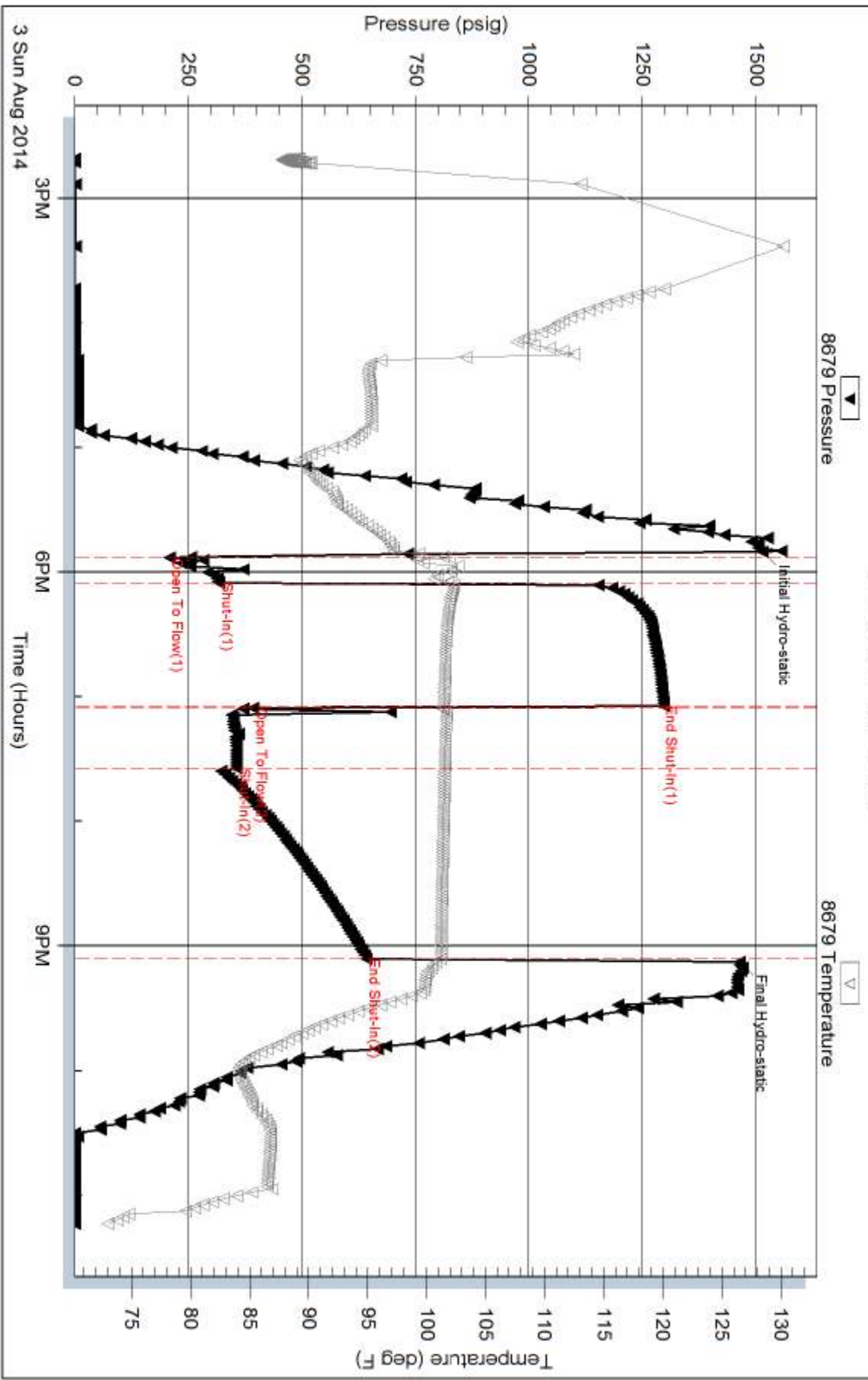
Inside

Murfin Drilling Co. Inc

Meyer #1-8

DST Test Number: 4

### Pressure vs. Time



Trilobite Testing, Inc

Ref. No: 58728

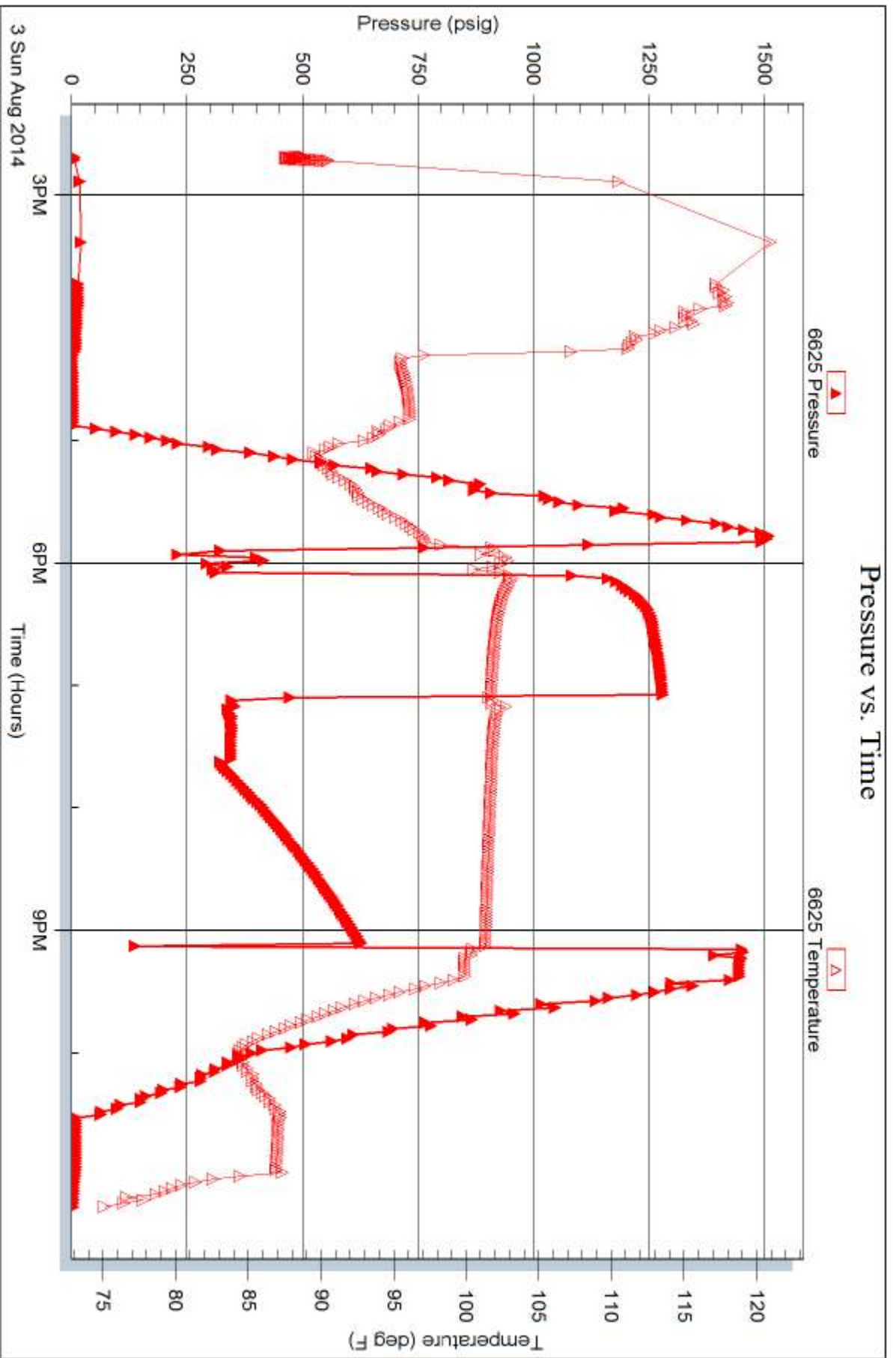
Printed: 2014.08.06 @ 10:27:25

Serial #: 6625

Outside Murfin Drilling Co. Inc

Meyer #1-8

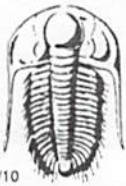
DST Test Number: 4



Trilobite Testing, Inc

Ref. No: 58728

Printed: 2014.08.06 @ 10:27:25



# TRILOBITE TESTING INC.

1515 Commerce Parkway • Hays, Kansas 67601

## Test Ticket

NO. 59275

Well Name & No. Meyer #1-8 Test No. 1 Date 8-1-14  
 Company Martin Drilling Co Inc Elevation 1919 KB 1914 GL  
 Address 250 N Water Ste 300 Wichita, KS 67202  
 Co. Rep / Geo. Jeff Christian Rig Martin 24  
 Location: Sec. 8 Twp. 10s Rge. 14w Co. Osborne State KS

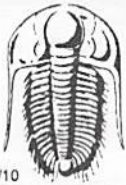
Interval Tested 2860-2880 Zone Tested Topok  
 Anchor Length 20' Drill Pipe Run 2775 Mud Wt. 8.6  
 Top Packer Depth 2855 Drill Collars Run 85 Vis 79  
 Bottom Packer Depth 2860 Wt. Pipe Run 0 WL 5.2  
 Total Depth 2880 Chlorides 1,600 ppm System LCM 2F

Blow Description IF Weak Surface Blow, Died in 14 mins  
ISF No Return  
FF - Built to 1/4"  
FSI - No Return.

Rec	Feet of	%gas	%oil	%water	%mud
<u>100'</u>	<u>M, with oil spots</u>			<u>100</u>	
Rec	Feet of	%gas	%oil	%water	%mud
Rec	Feet of	%gas	%oil	%water	%mud
Rec	Feet of	%gas	%oil	%water	%mud

Rec Total 100' BHT 97 Gravity API RW @ F Chlorides ppm  
 (A) Initial Hydrostatic 1831  Test 1150 T-On Location 09:43  
 (B) First Initial Flow 55  Jars  T-Started 10:42  
 (C) First Final Flow 65  Safety Joint  T-Open 13:56  
 (D) Initial Shut-In 1450  Circ Sub  T-Pulled 16:56  
 (E) Second Initial Flow 80  Hourly Standby  T-Out 18:36  
 (F) Second Final Flow 79  Mileage 116 RT 179.80 Comments Tool Plugged due to 15' of fill in bottom of hole, Tool slid  
 (G) Final Shut-In 1069  Sampler   Ruined Shale Packer 7'  
 (H) Final Hydrostatic 1388  Straddle   Ruined Packer   
 Initial Open 30  Shale Packer   Extra Copies   
 Initial Shut-In 60  Extra Packer  Sub Total 0  
 Final Flow 30  Extra Recorder  Total 1329.80  
 Final Shut-In 60  Day Standby  MP/DST Disc't   
 Sub Total 1329.80  Accessibility

Approved By \_\_\_\_\_ Our Representative Phil Gray Thank You  
 Trilobite Testing Inc. shall not be liable for damaged of any kind of the property or personnel of the one for whom a test is made, or for any loss suffered or sustained, directly or indirectly, through the use of its equipment, or its statements or opinion concerning the results of any test, tools lost or damaged in the hole shall be paid for at cost by the party for whom the test is made.



# TRILOBITE TESTING INC.

1515 Commerce Parkway • Hays, Kansas 67601

## Test Ticket

NO. 58726

4/10

Well Name & No. Meyer #1-8 Test No. 2 Date 8-1-14  
 Company Martin Drilling Co Inc Elevation 1914 KB 1914 GL  
 Address 250 N Water Stc 300 Wichita, KS 67202  
 Co. Rep / Geo. Jeff Christian Rig Martin 24  
 Location: Sec. 8 Twp. 10s Rge. 14w Co. Osborne State KS

Interval Tested 2857 - 2880 Zone Tested Topeka  
 Anchor Length 23' Drill Pipe Run 2775 Mud Wt. 8.6  
 Top Packer Depth 2852 Drill Collars Run 85 Vis 79  
 Bottom Packer Depth 2857 Wt. Pipe Run 0 WL 5.2  
 Total Depth 2880 Chlorides 1,600 ppm System LCM 2#  
 Blow Description FF - Built to 1 1/2"  
DSI - No Return  
FF - Surface Blow started @ 2mins, Built to 1 1/4"  
FSI - No Return

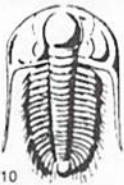
Rec	Feet of	%gas	%oil	%water	%mud
60'	SOLCM	10		90	

Rec Total 60' BHT 95 Gravity   API RW   @   ° F Chlorides   ppm  
 (A) Initial Hydrostatic 1403  Test 1150 T-On Location 20:30  
 (B) First Initial Flow 17  Jars   T-Started 21:57  
 (C) First Final Flow 24  Safety Joint   T-Open 00:34  
 (D) Initial Shut-In 1023  Circ Sub   T-Pulled 04:34  
 (E) Second Initial Flow 29  Hourly Standby   T-Out 06:00  
 (F) Second Final Flow 41  Mileage 116 RT 179.80 Comments    
 (G) Final Shut-In 998  Sampler    
 (H) Final Hydrostatic 1343  Straddle    Ruined Shale Packer    
 Shale Packer    Ruined Packer    
 Extra Packer    Extra Copies    
 Extra Recorder   Sub Total 0  
 Day Standby   Total 1329.80  
 Accessibility   MP/DST Disc't    
 Sub Total 1329.80

Initial Open 30  
 Initial Shut-In 60  
 Final Flow 60  
 Final Shut-In 90

Approved By   Our Representative Phillip Gage Thank You

Trilobite Testing Inc. shall not be liable for damaged of any kind of the property or personnel of the one for whom a test is made, or for any loss suffered or sustained, directly or indirectly, through the use of its equipment, or its statements or opinion concerning the results of any test, tools lost or damaged in the hole shall be paid for at cost by the party for whom the test is made.



# TRILOBITE TESTING INC.

1515 Commerce Parkway • Hays, Kansas 67601

## Test Ticket

NO. 58727

4/10

Well Name & No. Meyer #1-8 Test No. 3 Date 8-2-14  
 Company Martin Drilling Co Inc Elevation 1919 KB 1914 GL  
 Address 250 N Water Ste 300 Wichita, KS 67202  
 Co. Rep / Geo. Jeff Christian Rig Martin 24  
 Location: Sec. 8 Twp. 10s Rge. 14w Co. Osborne State KS

Interval Tested 2953-3021 Zone Tested Lecompton  
 Anchor Length 68' Drill Pipe Run 2869 Mud Wt. 8.7  
 Top Packer Depth 2948 Drill Collars Run 85 Vis 84  
 Bottom Packer Depth 2953 Wt. Pipe Run 0 WL 5.2  
 Total Depth 3021 Chlorides 2,800 ppm System LCM 2#

Blow Description IF - Built to 1/8", died in 27 mhs.  
ESI - No Return  
FF - No Blow  
FSE - No Return

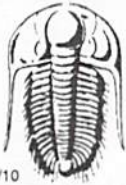
Rec	Feet of	%gas	%oil	%water	%mud
<u>5'</u>	<u>M</u>			<u>100</u>	
Rec	Feet of	%gas	%oil	%water	%mud
Rec	Feet of	%gas	%oil	%water	%mud
Rec	Feet of	%gas	%oil	%water	%mud

Rec Total 5' BHT 98 Gravity API RW @ ° F Chlorides ppm  
 (A) Initial Hydrostatic 1458  Test 1150 T-On Location 16:28  
 (B) First Initial Flow 16  Jars \_\_\_\_\_ T-Started 16:29  
 (C) First Final Flow 19  Safety Joint \_\_\_\_\_ T-Open 18:22  
 (D) Initial Shut-In 1004  Circ Sub \_\_\_\_\_ T-Pulled 21:22  
 (E) Second Initial Flow 20  Hourly Standby \_\_\_\_\_ T-Out 22:51  
 (F) Second Final Flow 23  Mileage 116 RT 179.80 Comments \_\_\_\_\_  
 (G) Final Shut-In 993  Sampler \_\_\_\_\_  
 (H) Final Hydrostatic 1511  Straddle \_\_\_\_\_  Ruined Shale Packer \_\_\_\_\_  
 Shale Packer \_\_\_\_\_  Ruined Packer \_\_\_\_\_  
 Extra Packer \_\_\_\_\_  Extra Copies \_\_\_\_\_  
 Extra Recorder \_\_\_\_\_

Initial Open 30  
 Initial Shut-In 60  
 Final Flow 30  
 Final Shut-In 60  
 Sub Total 1329.80  
 Total 1329.80  
 MP/DST Disc't \_\_\_\_\_

Approved By \_\_\_\_\_ Our Representative Jeff Christian Thank You

Trilobite Testing Inc. shall not be liable for damaged of any kind of the property or personnel of the one for whom a test is made, or for any loss suffered or sustained directly or indirectly, through the use of its equipment, or its statements or opinion concerning the results of any test, tools lost or damaged in the hole shall be paid for at cost by the party for whom the test is made.



# TRILOBITE TESTING INC.

1515 Commerce Parkway • Hays, Kansas 67601

## Test Ticket

NO. 58728

4/10

Well Name & No. Mayer #1-8 Test No. 4 Date 8-3-14  
 Company Murfin Drilling Co Inc Elevation 1919 KB 1914 GL  
 Address 250 N Water St 300 Wichita, KS 67202  
 Co. Rep / Geo. Jeff Christian Rig Murfin 24  
 Location: Sec. 8 Twp. 10s Rge. 14w Co. Oskage State KS

Interval Tested 3114 - 3200 Zone Tested LKC "A-D"  
 Anchor Length 86' Drill Pipe Run 3026 Mud Wt. 9.0  
 Top Packer Depth 3109 Drill Collars Run 85 Vis 79  
 Bottom Packer Depth 3114 Wt. Pipe Run 0 WL 6.0  
 Total Depth 3200 Chlorides 4,400 ppm System LCM 2#

Blow Description IF - BOB in 30 sec.  
ISL - No Return.  
PF - Built to 10", died back to 8"  
FSL - No Return.

Rec	Feet of	%gas	%oil	%water	%mud
<u>692'</u>	<u>M, with oil spots</u>				<u>100</u>
Rec	Feet of	%gas	%oil	%water	%mud
Rec	Feet of	%gas	%oil	%water	%mud
Rec	Feet of	%gas	%oil	%water	%mud
Rec	Feet of	%gas	%oil	%water	%mud

Rec Total 692' BHT 101 Gravity — API RW — °F Chlorides — ppm  
 (A) Initial Hydrostatic 1514  Test 1150 T-On Location 14:39  
 (B) First Initial Flow 208  Jars — T-Started 14:41  
 (C) First Final Flow 318  Safety Joint — T-Open 17:51  
 (D) Initial Shut-In 1296  Circ Sub — T-Pulled 21:06  
 (E) Second Initial Flow 392  Hourly Standby — T-Out 23:15  
 (F) Second Final Flow 355  Mileage 116 RT 179.80  
 (G) Final Shut-In 641  Sampler —  
 (H) Final Hydrostatic 1463  Straddle —  Ruined Shale Packer —  
 Shale Packer —  Ruined Packer —  
 Extra Packer —  Extra Copies —  
 Extra Recorder —

Initial Open 15  
 Initial Shut-In 60  
 Final Flow 30  
 Final Shut-In 90  
 Sub Total 1329.80  
 Total 1329.80  
 MP/DST Disc't —

Approved By — Our Representative Phillip Gray Thank You

Trilobite Testing Inc. shall not be liable for damaged or any kind of the property or personnel of the one for whom a test is made, or for any loss suffered or sustained, directly or indirectly, through the use of its equipment, or its statements or opinion concerning the results of any test, tools lost or damaged in the hole shall be paid for at cost by the party for whom the test is made.





# TRILOBITE TESTING INC.

1515 Commerce Parkway • Hays, Kansas 67601

## Test Ticket

NO. 60489

4/10

Well Name & No. Meyer #1-8 Test No. — Date 8-5-14  
 Company Murfin Drilling Co. INC. Elevation 1919 KB 1914 GL  
 Address 250 N. Water Suite 300 Wichita KS. 67202  
 Co. Rep / Geo. Jeff Christian Rig Murfin 24  
 Location: Sec. 8 Twp. 10-5 Rge. 14-W Co. Osborne State KS

Interval Tested \_\_\_\_\_ Zone Tested \_\_\_\_\_  
 Anchor Length \_\_\_\_\_ Drill Pipe Run \_\_\_\_\_ Mud Wt. \_\_\_\_\_  
 Top Packer Depth \_\_\_\_\_ Drill Collars Run \_\_\_\_\_ Vis \_\_\_\_\_  
 Bottom Packer Depth \_\_\_\_\_ Wt. Pipe Run \_\_\_\_\_ WL \_\_\_\_\_  
 Total Depth \_\_\_\_\_ Chlorides \_\_\_\_\_ ppm System LCM \_\_\_\_\_

Blow Description Got truck on 8-4-14 @ 17:30 Loaded tool on 8-5-14 @ 20:45 ; Initial log hit bridge went into Recondition Hole Rotary Chain Broke on way out of Hole!

Rec	Feet of	%gas	%oil	%water	%mud

Rec Total \_\_\_\_\_ BHT \_\_\_\_\_ Gravity \_\_\_\_\_ API RW \_\_\_\_\_ @ \_\_\_\_\_ °F Chlorides \_\_\_\_\_ ppm

(A) Initial Hydrostatic \_\_\_\_\_  Test \_\_\_\_\_ T-On Location \_\_\_\_\_  
 (B) First Initial Flow \_\_\_\_\_  Jars \_\_\_\_\_ T-Started \_\_\_\_\_  
 (C) First Final Flow \_\_\_\_\_  Safety Joint \_\_\_\_\_ T-Open \_\_\_\_\_  
 (D) Initial Shut-In \_\_\_\_\_  Circ Sub \_\_\_\_\_ T-Pulled \_\_\_\_\_  
 (E) Second Initial Flow \_\_\_\_\_  Hourly Standby \_\_\_\_\_ T-Out 20:45 Loaded tool  
 (F) Second Final Flow \_\_\_\_\_  Mileage 96/R.T., 116 179.80 8-5-14 - Loaded tool  
 (G) Final Shut-In \_\_\_\_\_  Sampler \_\_\_\_\_ 20:45:00  
 (H) Final Hydrostatic \_\_\_\_\_  Straddle \_\_\_\_\_  Ruined Shale Packer \_\_\_\_\_  
 Shale Packer \_\_\_\_\_  Ruined Packer \_\_\_\_\_  
 Initial Open \_\_\_\_\_  Extra Packer \_\_\_\_\_  Extra Copies \_\_\_\_\_  
 Initial Shut-In \_\_\_\_\_  Extra Recorder \_\_\_\_\_ Sub Total 800  
 Final Flow \_\_\_\_\_  Day Standby 1d 21.5h Total 979.80  
 Final Shut-In \_\_\_\_\_  Accessibility \_\_\_\_\_ MP/DST Disc't \_\_\_\_\_  
 Sub Total 179.80

Approved By \_\_\_\_\_ Our Representative [Signature]

Trilobite Testing Inc. shall not be liable for damaged of any kind of the property or personnel of the one for whom a test is made, or for any loss suffered or sustained, directly or indirectly, through the use of its equipment, or its statements or opinion concerning the results of any test, tools lost or damaged in the hole shall be paid for at cost by the party for whom the test is made.