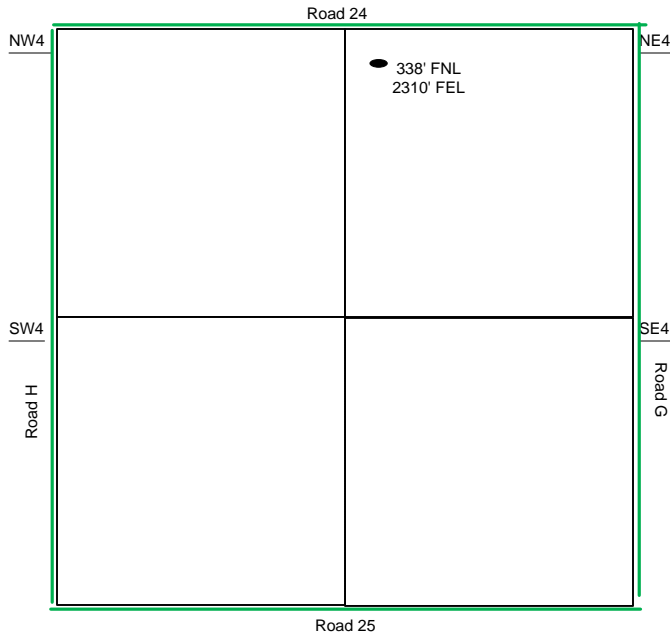
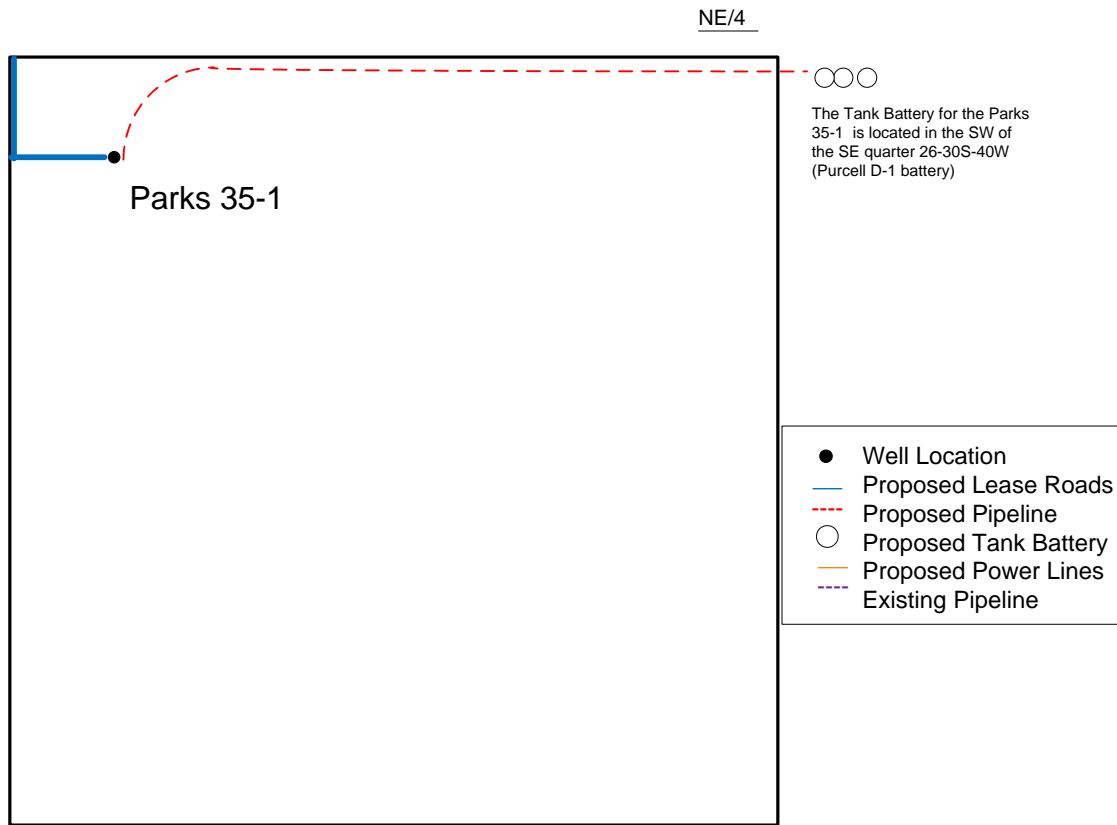


Proposed Plan of Construction

Parks 35-1
Sec 35 T30S-R40W
Stanton County, KS



Sec 35 - T30S - R40W



Proposed Details of
NE/4 Sec 35 - T30S - R40W

Proposed Site Diagram
Parks 35-1
October 8, 2014

Note-Drawing **Not** to Scale