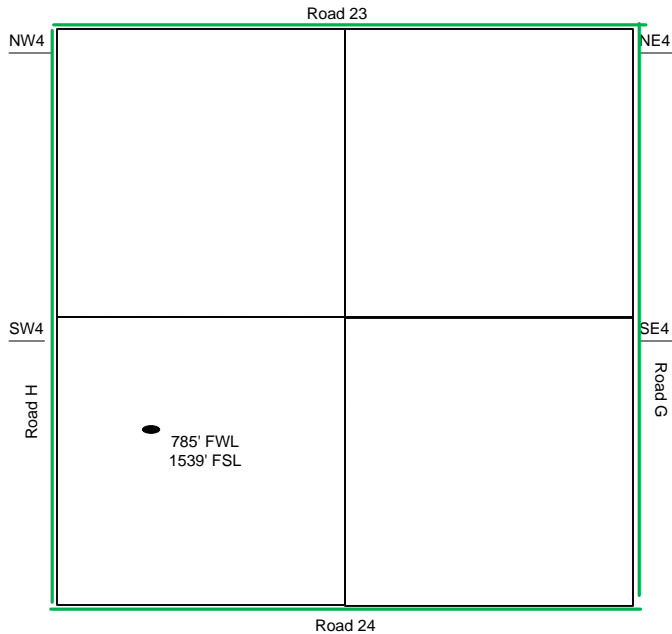
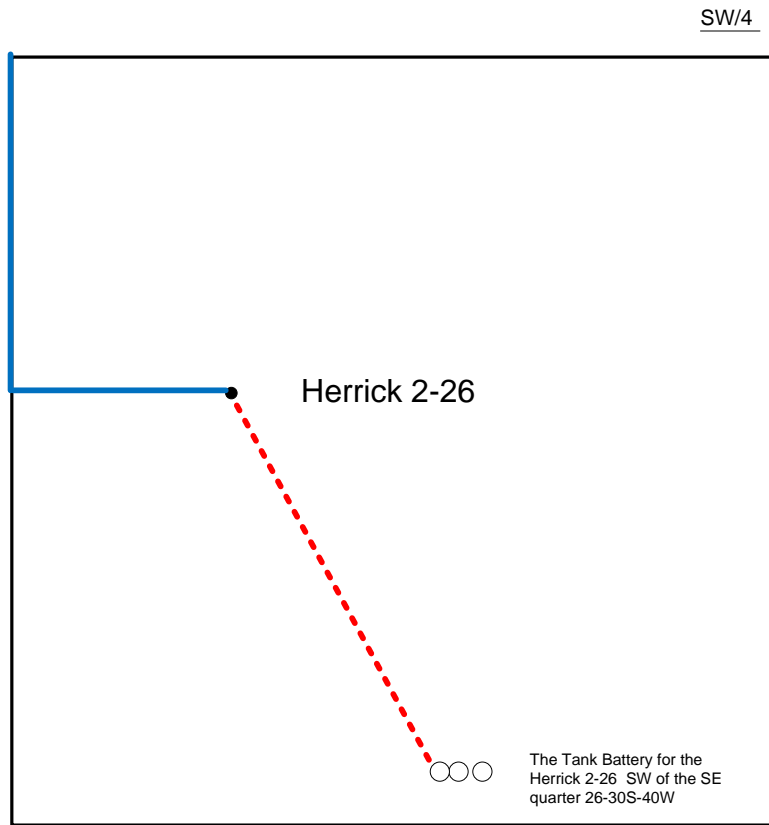


Proposed Plan of Construction

Herrick 2-26  
Sec 26 T30S-R40W  
Stanton County, KS



Sec 26 – T30S – R40W



Proposed Details of  
SW/4 Sec 26 – T30S – R40W

Proposed Site Diagram  
Herrick 2-26  
October 8, 2014

Note-Drawing **Not** to Scale