



MIDWEST SURVEYS

LOGGING - PERFORATING - CONSULTING SERVICES
 P.O. Box 68, Osawatomie, KS 66064
 913 / 755 - 2128

GAMMA RAY / NEUTRON / CCL

API# 15-121-30,393

File No.		Company		Haas Petroleum, LLC.			
		Well		Phillips No. 14-HP			
		Field		Paola / Rantoul			
		County		Miami			
		State		Kansas			
Location		1310' FSL & 840' FEL NE-NW-SE-SE		Other Services Perforate			
Sec. 14		Twp. 16s		Rge. 21e			
Permanent Datum		GL		Elevation 1009'			
Log Measured From		GL		K.B. NA D.F. NA G.L. 1009'			
Drilling Measured From		GL					
Date		10-06-2014					
Run Number		One					
Depth Driller		725.0					
Depth Logger		714.0					
Bottom Logged Interval		713.0					
Top Log Interval		20.0					
Fluid Level		Full					
Type Fluid		Water					
Density / Viscosity		NA					
Salinity - PPM Cl		NA					
Max Recorded Temp		NA					
Estimated Cement Top		0.0					
Equipment No.		102		Osawatomie			
Recorded By		Gary Windisch					
Witnessed By		John Haas					
RUN		BORE-HOLE RECORD		CASING RECORD			
No.	BIT	FROM	TO	SIZE	WGT.	FROM	TO
One	9.875"	0.0	20.0	7.00"	17.0 #	0.0	20.0
Two	5.625"	20.0	725.0	2.875"	6.5 #	0.0	715.0

<<< Fold Here >>>

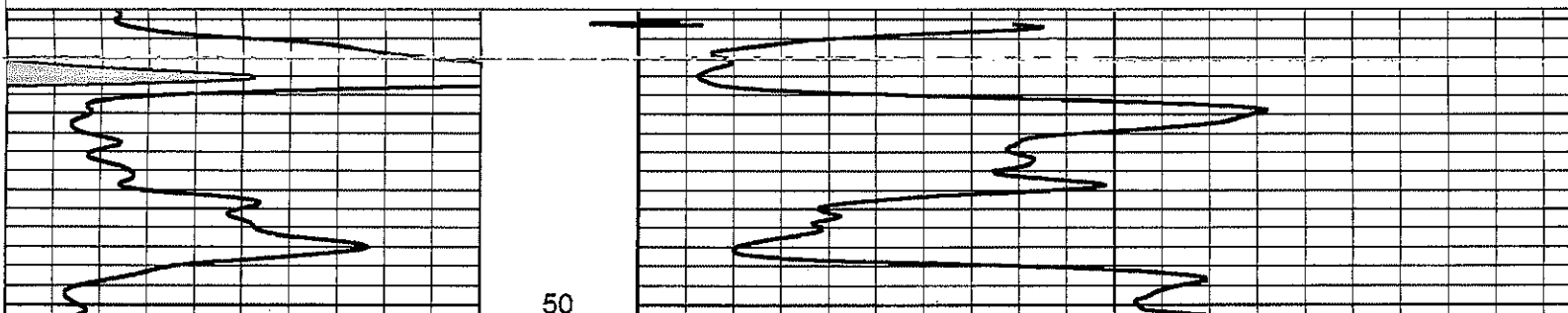
All interpretations are opinions based on inferences from electrical or other measurements and we cannot and do not guarantee the accuracy or correctness of any interpretation, and we shall not, except in the case of gross or willful negligence on our part, be liable or responsible for any loss, costs, damages, or expenses incurred or sustained by anyone resulting from any interpretation made by any of our officers, agents or employees. These interpretations are also subject to our general terms and conditions set out in our current Price Schedule.

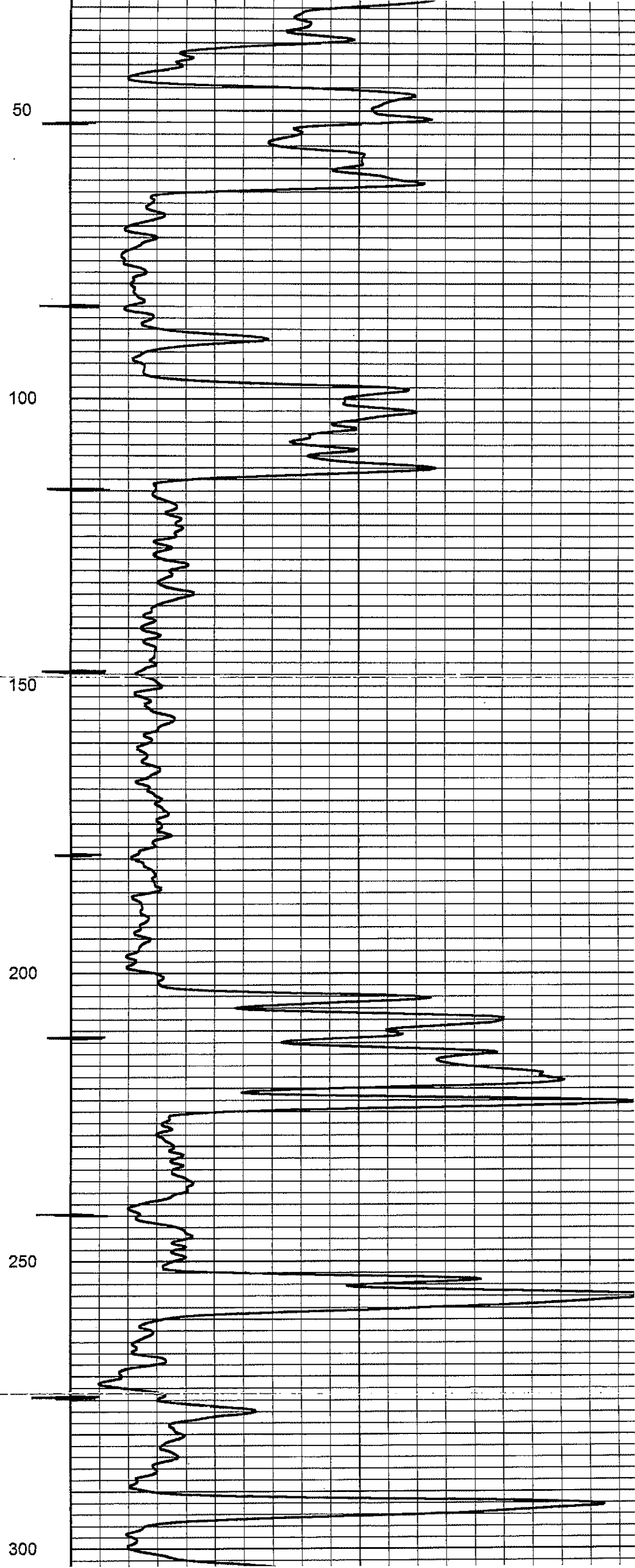
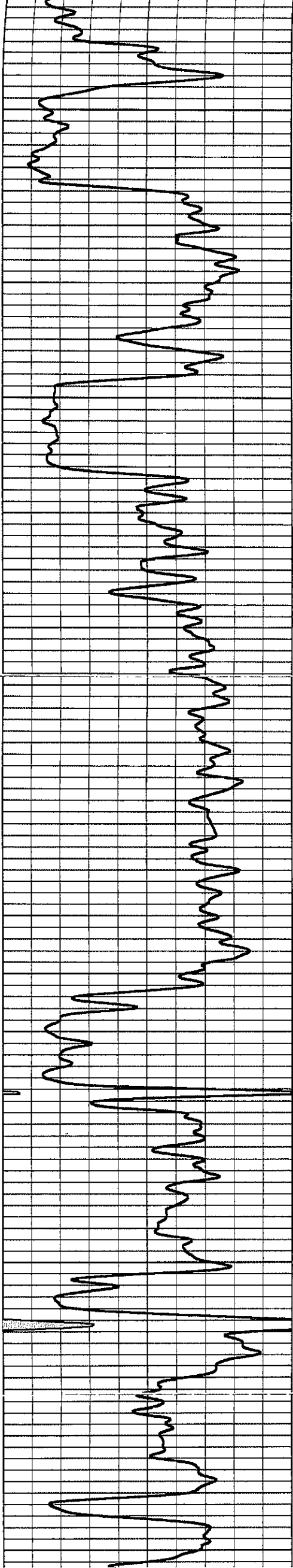
Comments

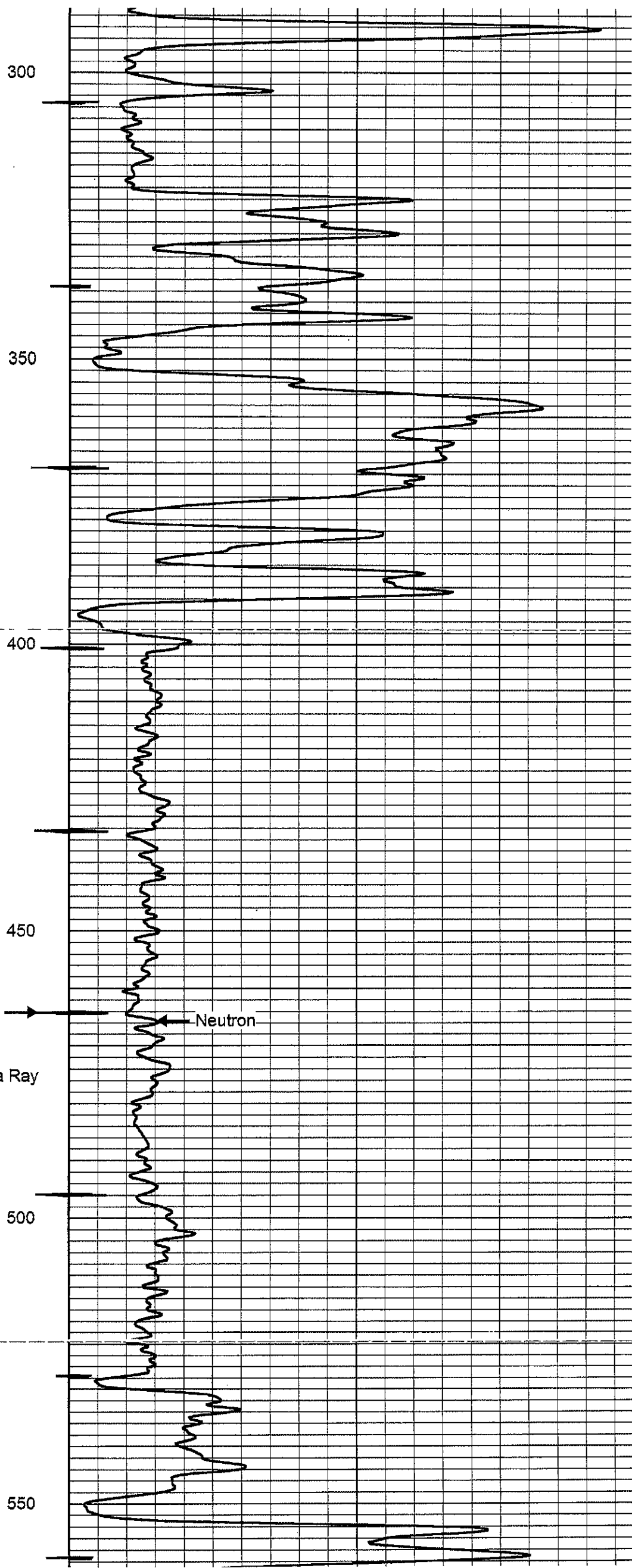
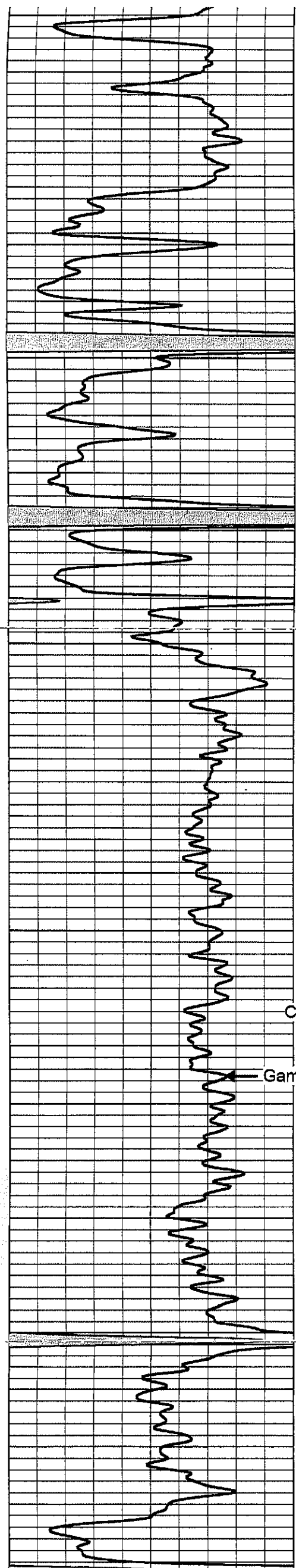
Drilling Contractor :
 Skyy Drilling, LLC.
 Rig #5

Database File: phillips14hp.db
 Dataset Pathname: pass1
 Presentation Format: gr-n-ccl
 Dataset Creation: Mon Oct 06 09:07:27 2014 by Log SCH 111116
 Charted by: Depth in Feet scaled 1:240

0	Gamma Ray (cps)	150	-1 CCL 1	100	Neutron (cps)	190
150	Gamma Ray (cps)	300				



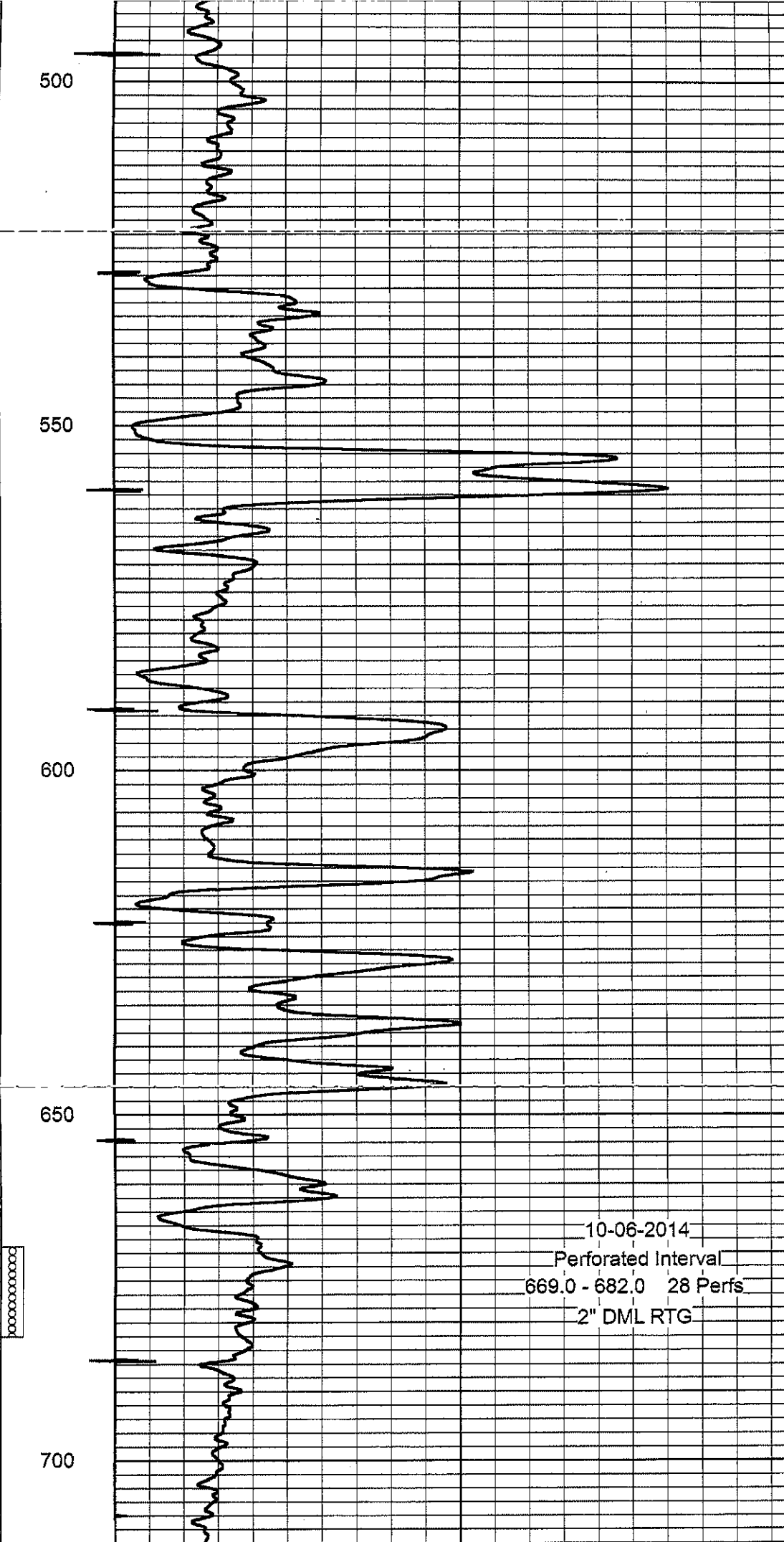
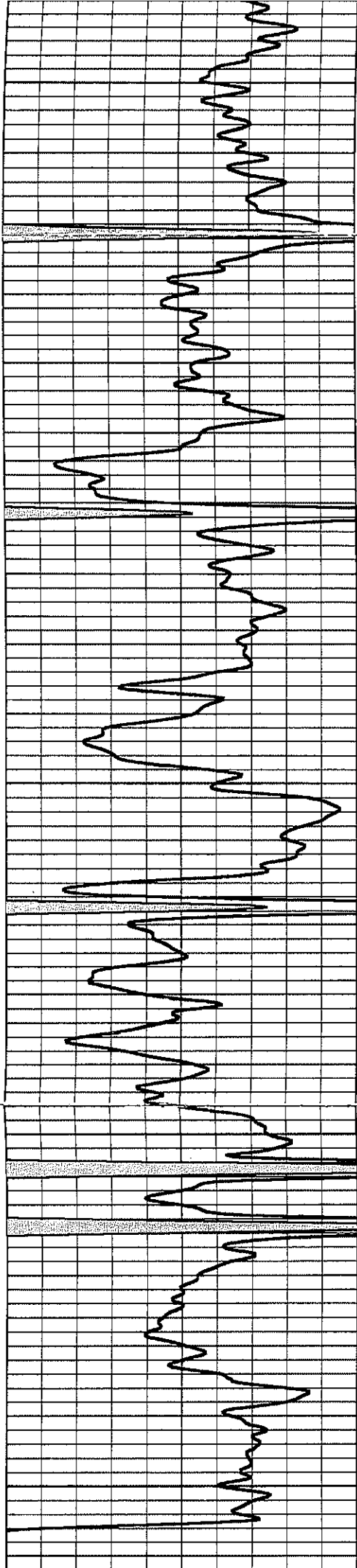




CCL

Gamma Ray

Neutron



10-06-2014
 Perforated Interval
 669.0 - 682.0 28 Perfs
 2" DML RTG

0	Gamma Ray (cps)	150
150	Gamma Ray (cps)	300

-1 CCL 1
 100

Neutron (cps) 190