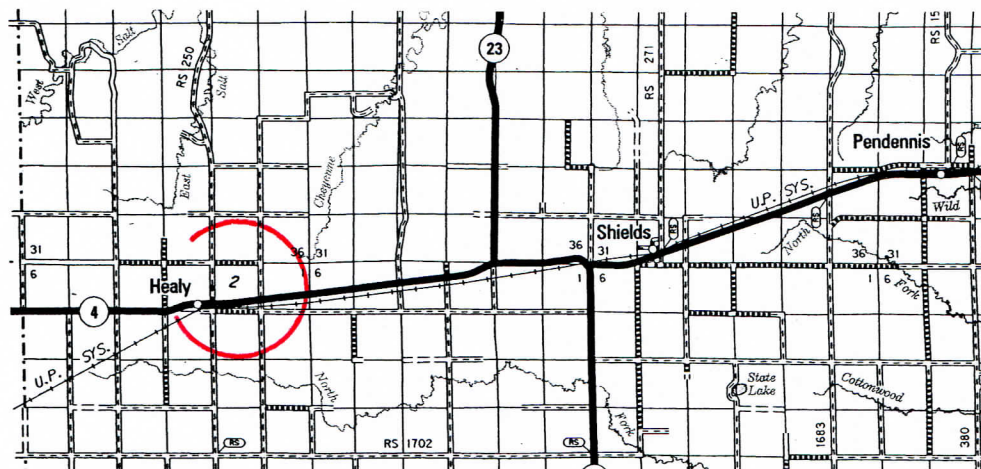
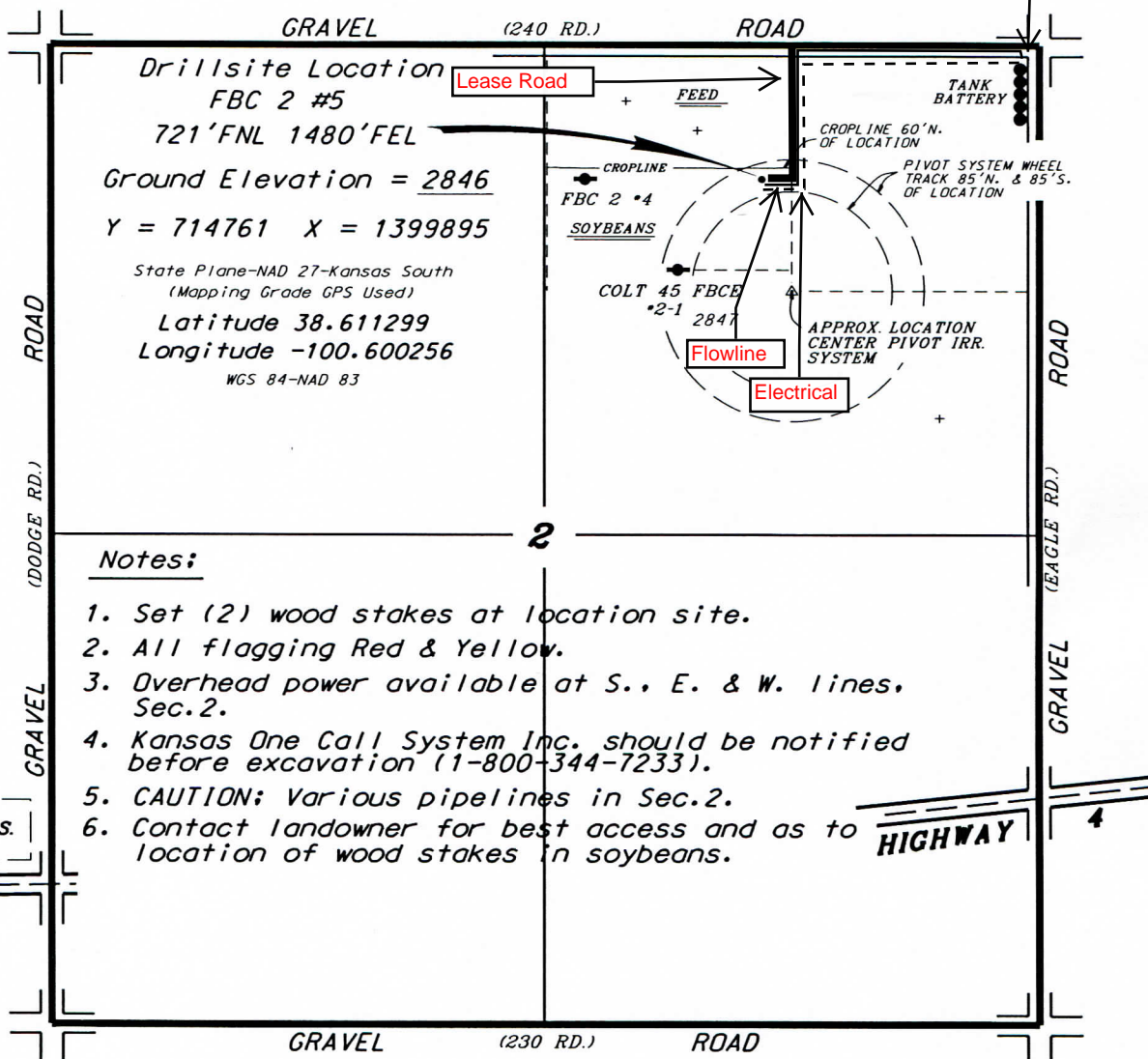


Common Tank Battery



* Approximate section lines were determined using the normal standard of care of oilfield surveys practicing in the state of Kansas. The section corners, which establish the precise section lines, were not necessarily located, and the exact location of the drillsite location in the section is not guaranteed. Therefore, the operator securing this service and accepting this plot and all other parties relying thereon agree to hold Central Kansas Oilfield Services, Inc., its officers and employees harmless from all claims, damages and expenses and said entities released from any liability from incidental or consequential damages.

Date October 3, 2014

CENTRAL KANSAS OILFIELD SERVICES, INC. (620)792-1977