

Saman Sharifaie

Petroleum Geologist

GEOLOGIST'S REPORT

DRILLING TIME AND SAMPLE LOG

COMPANY **Marfin Drilling Co., Inc.**
LEASE **Wilkinson "A" #1 -34**

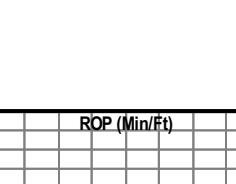
FIELD **Wildcat**
LOCATION **2310 FNL & 750 FWL**
SEC **34** TWP **1S** RGE **36W**
COUNTY **Rainbow** STATE **Kansas**

CONTRACTOR **Murfin Drilling #2**
SPUD **08/29/14** COMPE **09/07/14**
RTD **49:50'** LTD **49:53'**
MUD UP **3:30'** TYPE MUD **Chemical**

SAMPLES SAVED FROM **3:30'** TO RTD
DRILLING TIME KEPT FROM **3:52'** TO RTD
SAMPLES EXAMINED FROM **3:50'** TO RTD
GEOLOGICAL SUPERVISION FROM **3:30'**

REFERENCE WELL **Berxco-Wilkinson #1-34**
CND: DIL: MEL: SAUC: **Flower Hrefline**

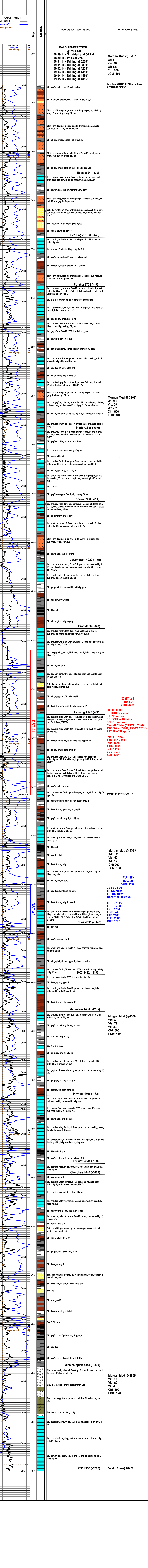
Formation	Sample Tops	E-log Tops	Strat Pos.
Anhydrite	3133 (+110)	3134 (+111)	+14
Base Anhydrite	3170 (+75)	3170 (+75)	+15
NASA	3209 (-384)	3204 (-370)	+5
Tongue	3262 (-217)	3268 (-213)	+3
Langshir	4178 (-233)	4176 (-231)	+3
BKCC	4443 (-1200)	4442 (-1197)	+16
Pawnee	4504 (-1319)	4506 (-1321)	DNS
Cherokee	4638 (-1405)	4637 (-1402)	DNS
Mississippian	4857 (-1607)	4844 (-1599)	DNS



REMARKS Due to poor shows of oil in all potential pay zones and negative DST results, it is recommended and agreed upon by all parties that this well be plugged and abandoned.

Respectfully Submitted,
Saman Sharifaie
Petroleum Geologist

API #15-153-21049
*Tops have been adjusted to electric logs



Deviation Survey @ 4258': 1/2
Morgan Mud @ 4865'
WT: 9.0
Vis: 69
WI: 800
Chl: 800
LCM: 12#