

TRANS PACIFIC OIL CORPORATION

TRANS PACIFIC OIL



API # 15-163-24158

GEOLOGIST'S REPORT DRILLING TIME AND SAMPLE LOG

Geologist on Well Alex Chapin
 LEASE Mongeau Trust 'A' Unit # 1-30
 FIELD Wildcat
 LOCATION 1014' FSL & 1969' FWL
 SEC 30 TWSP 6S RGE 18W
 COUNTY Rooks STATE Kansas
 CONTRACTOR Shields
 SPUD 7/18/2014 COMP 7/30/2014
 RTD 3660 LTD 3659
 MUD UP 2800 TYPE MUD CHEMICAL

SAMPLES SAVED FROM 3000 TO RTD
 DRILLING TIME KEPT FROM 2700 TO RTD
 SAMPLES EXAMINED FROM 2700 TO RTD
 GEOLOGICAL SUPERVISION FROM 2700
 REFERENCE WELL Mayhew 1-30, Sec 30-6S-18W

ELEVATIONS

KB 2048
 DF _____
 GL 2043

Measurements Are All
From Kelly Bushing

CASING

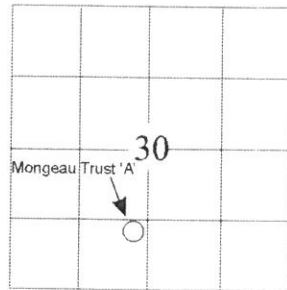
CONDUCTOR _____
 SURFACE 8-5/8" @ 217'
 PRODUCTION 4-1/2" @ 3656'

ELECTRICAL SURVEYS

DIL, DUCP, MICRO, SONIC, PE

NABORS

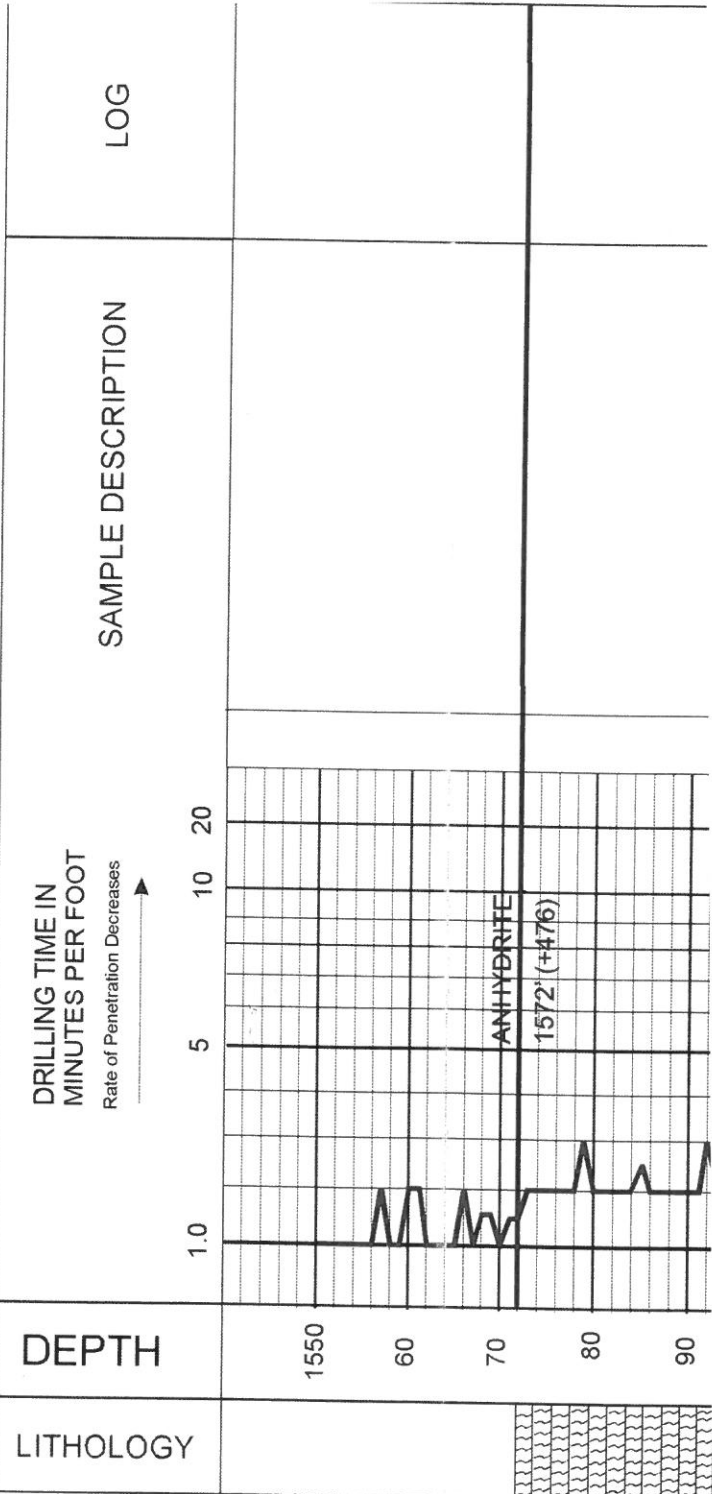
Formation	Sample Tops	E-log Tops	Struct Pos.
Anhydrite	1572 (+476)	1575 (+473)	-6
Base Anhydrite	1604 (+444)	1603 (+445)	-3
Topeka	3024 (-976)	3023 (-975)	+2
Heebner	3226 (-1178)	3224 (-1176)	+3
Lasning	3267 (-1219)	3265 (-1217)	+3
BKC	3488 (-1440)	3483 (-1435)	+8
Arbuckle	3569 (-1521)	3567 (-1519)	+5
Precambrian	3615 (-1567)	3611 (-1563)	-4
RTD	3660 (-1612)	3659 (-1611)	

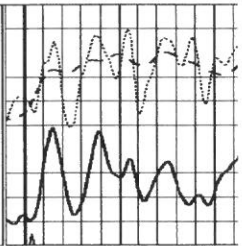


REMARKS Due to our positive drill stem test results and structural position it has been decided to run production pipe to further test and produce multiple zones in the Topeka and the Lansing formations.

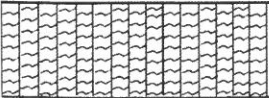
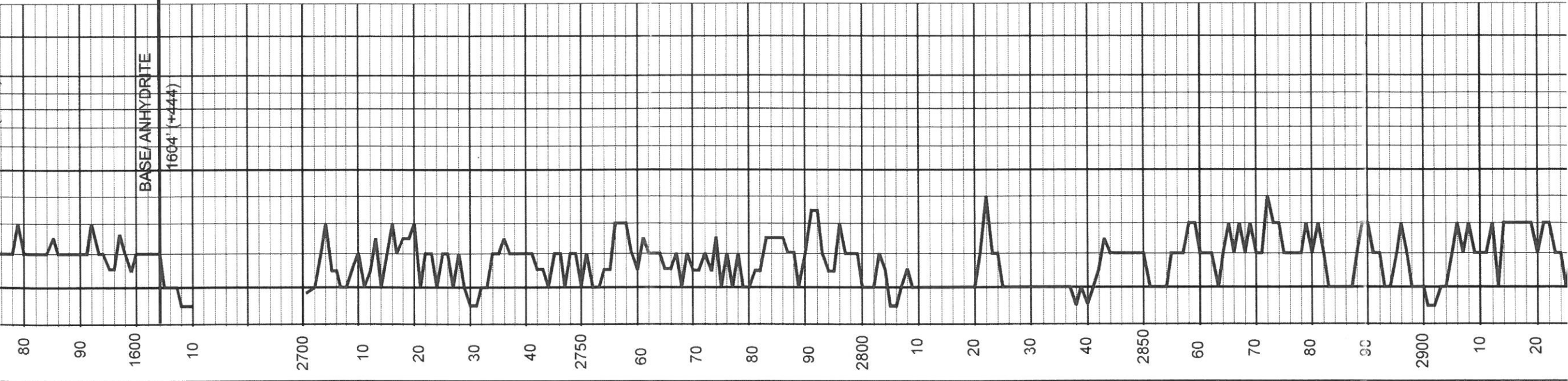
LEGEND

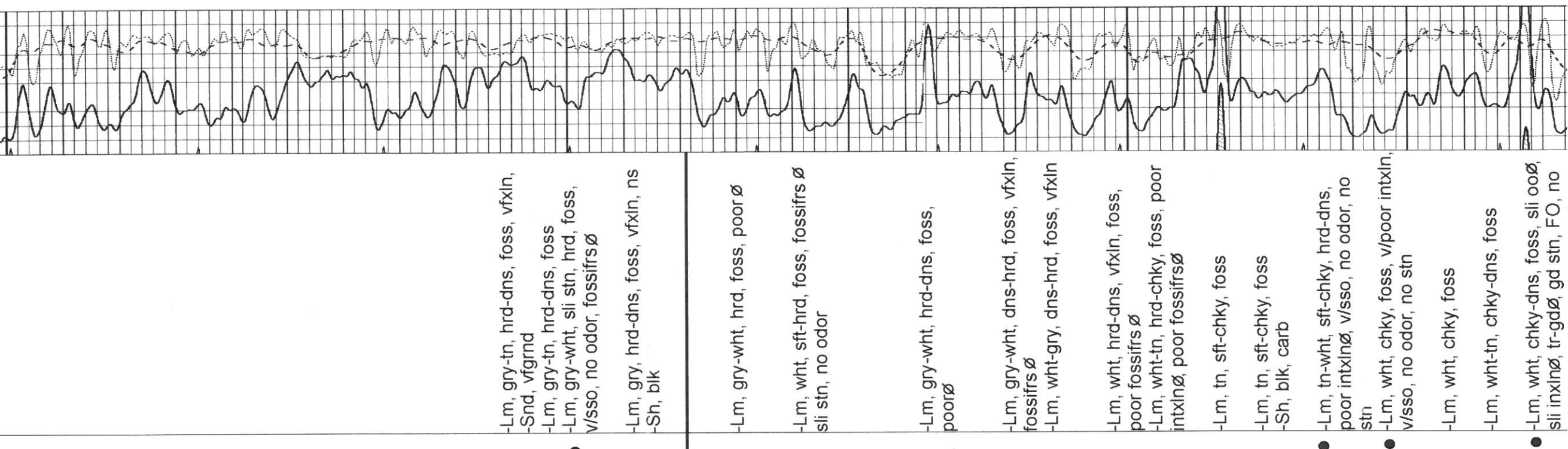
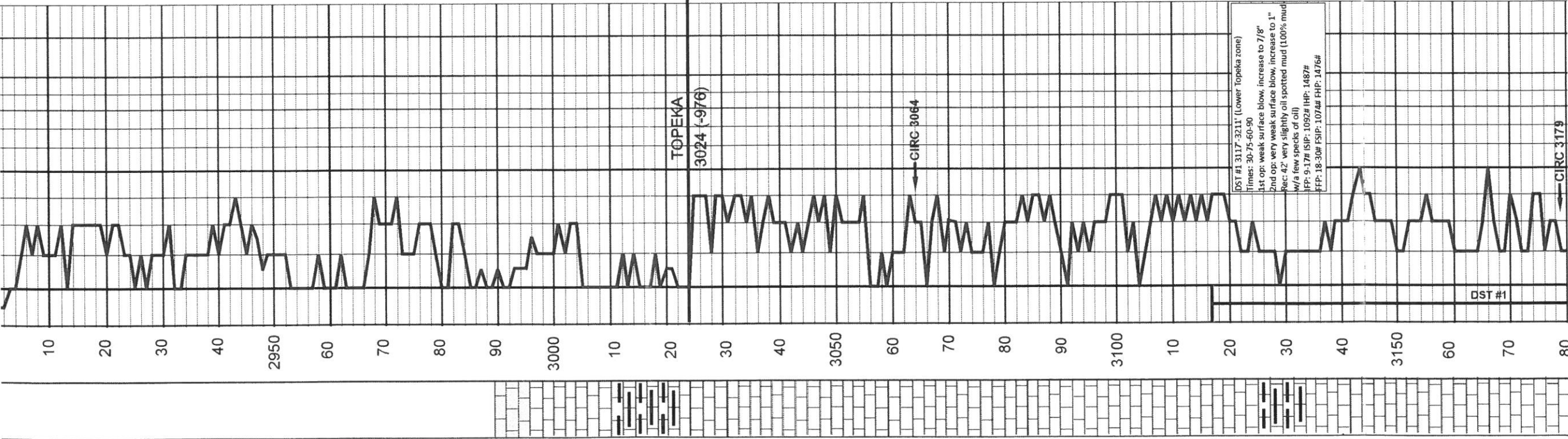
- Dolomite
- Chert
- Cherty LS
- Carb Sh
- Shale
- Limestone
- Sandstone
- Anhydrite





0 GAMMA RAY (API) 150
 -100 SP (mV) 100
 -250 R2R1 50
 0 MINIK 20





-Lm, gry-tn, hrd-dns, foss, vfxln, Snd, vfrnd
 -Lm, gry-tn, hrd-dns, foss
 -Lm, gry-wht, sli stn, hrd, foss, v/sso, no odor, fossifrsø
 -Lm, gry, hrd-dns, foss, vfxln, ns
 -Sh, blk

-Lm, gry-wht, hrd, foss, poorø
 -Lm, wht, sft-hrd, foss, fossifrsø
 sli stn, no odor

-Lm, gry-wht, hrd-dns, foss, poorø

-Lm, gry-wht, dns-hrd, foss, vfxln, fossifrsø
 -Lm, wht-gry, dns-hrd, foss, vfxln

-Lm, wht, hrd-dns, vfxln, foss, poor fossifrsø
 -Lm, wht-tn, hrd-chky, foss, poor intxlnø, poor fossifrsø

-Lm, tn, sft-chky, foss
 -Lm, tn, sft-chky, foss
 -Sh, blk, carb

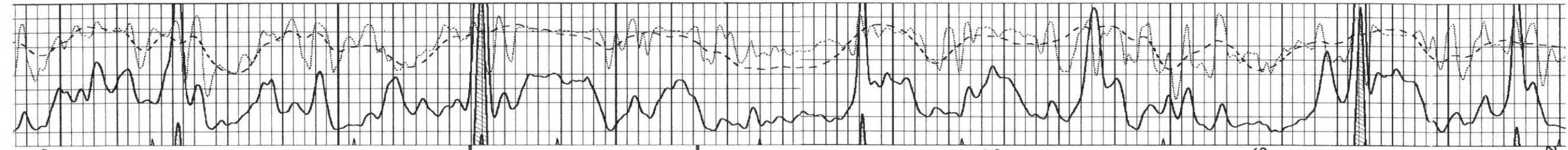
-Lm, tn-wht, sft-chky, hrd-dns, poor intxlnø, v/sso, no odor, no stn

-Lm, wht, chky, foss, v/poor intxln, v/sso, no odor, no stn

-Lm, wht, chky, foss

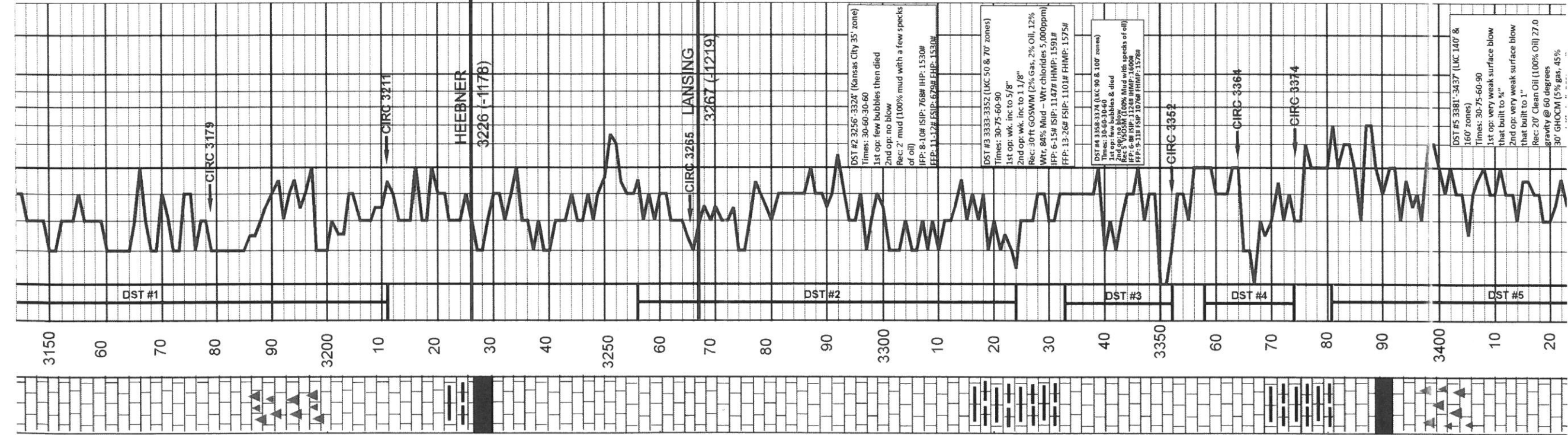
-Lm, wht-tn, chky-dns, foss

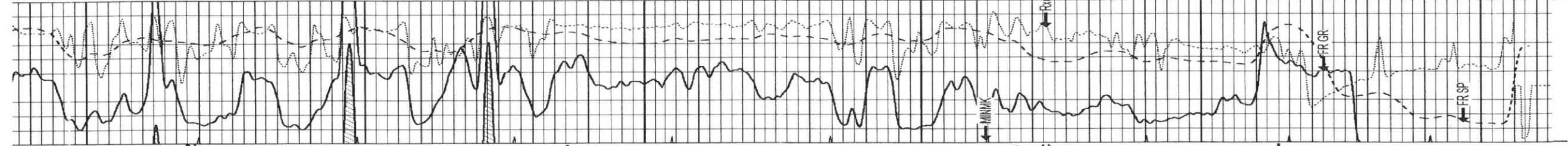
-Lm, wht, chky-dns, foss, sli ooø, sli inxlnø, tr-gdø, gd stn, FO, no



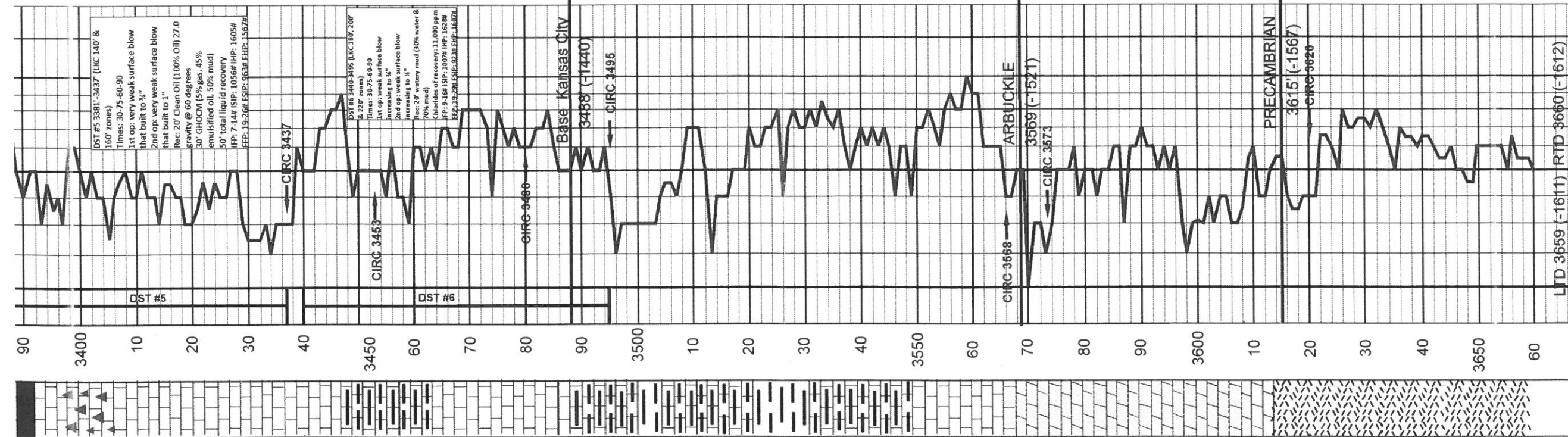
STN

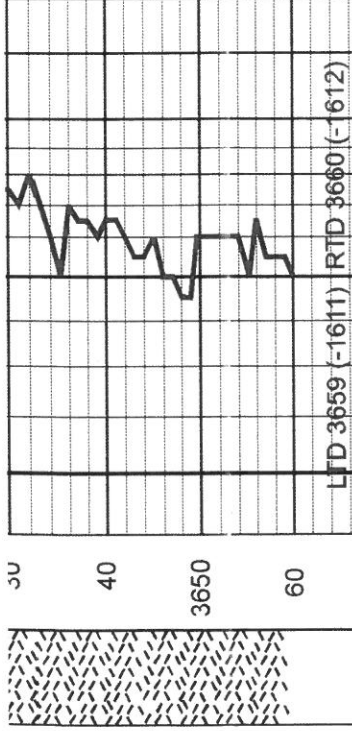
- -Lm, wht, chky, foss, v/poor intxln, v/ssø, no odor, no stn
- Lm, wht, chky, foss
- Lm, wht-tn, chky-dns, foss
- -Lm, wht, chky-dns, foss, sli ooø, sli intxlnø, tr-gdø, gd stn, FO, no odor
- Lm, wht-gry, hrd-dns, foss, NS
- Cht, gry-tn
- Lm, wht, chky, foss, vfxln, NS
- Cht, tn-gry-wht
- Lm, wht, sft-chky, foss, vfxln, NS
- Sh, blk, carb, Heebner
- Lm, tn-gry, hrd-dns, foss, vfxln, poorø
- Lm, tn-gry, hrd-dns, foss, poorø
- Lm, gry, hrd-dns, vfxln, poorø
- Lm, wht-tn, sft-chky, foss, vfxln
- -Lm, wht, hrd, foss, fossmidcø, ooø, sli vugs, SSSO, sli odor, sli stn
- Lm, wht, sft-chky, vfxln, sli odor, NS
- Lm, wht, sft-chky, vfxln, NS
- -Lm, wht, chky, vfxln, v/ssø, sli stn, weak odor
- Lm, tn-wht, sft-chky, vfxln, poorø, NS
- Lm, wht, sft-chky, vfxln, NS
- Sh, gry-grn-red
- -Lm, wht-tn, hrd, vfxln, foss, sli intxlnø, SSO, sli odor, sli stn
- -Lm, wht, hrd, fxin, gd intxlnø, gd odor, FSO, gdø, gd stn
- Lm, wht, chky, vfxln, noø
- Lm, wht-gry, vfxln, chky, foss, NS
- Lm, wht, vfxln, sft-chky, poor intxlnø
- Lm, wht-gry, hrd-dns, foss, poor intxlnø
- Sh, blk, carb
- -Lm, wht-tn, vfxln, foss, 1 pc-intxlnø-v/ssø, no odor
- Cht, wht
- -Lm, wht-tn, fxin, hrd, gd intxlnø, FSO, gd odor, gd stn, sli vugs
- -Lm, wht, hrd, vfxln-fxin, gd intxlnø





- intxnØ
- Sh, blk, carb
- Lm, wht-tn, vfxln, foss, 1 pc-
- intxnØ-v/sso, no odor
- -Cht, wht
- -Lm, wht-tn, fxln, hrd, gd intxnØ, FSO, gd odor, gd stn, sli vugs
- -Lm, wht, hrd, vfxln-fxln, gd intxnØ, foss, sli fossifrsØ, gd stn, sli odor, FSO
- -Lm, wht-gry, fxln, sli intxnØ, SSO, fr odor, gd stn
- -Lm, wht-gry, vfxln, hrd, fr intxnØ, SSO, sli odor, fr stn
- -Lm, wht, vfxln, hrd, gd intxnØ, FSO, sli odor, gd stn
- -Lm, wht, hrd-dns, sli odor, sli stn, poor intxnØ, v/sso
- -Lm, wht, hrd, fxln, SSO, sli odor, poor intxnØ, sli stn
- Sh, red-grn-gry
- Sh, red-grn-gry
- Lm, tn-gry, vfxln
- Sh, red-gry
- Lm, gry-tn, vfxln, hrd, noØ
- Sh, red-grn-gry
- Sh, gry-grn-red
- Sh, blk-rd-grn-gry
- Lm, tn, fxln, hrd, noØ
- Lm, wht, fxln, sft-chky
- Sh, gry-grn
- Lm, wht, hrd-dns, oo, poor ooØ
- Lm, wht, hrd, oo, no ooØ
- Snd, wht, med gm, calc conc, dolomtc conc, qtz grns
- Dol, wht-pnk-tn, dns, abndt glauc flaks, sndy, few qtz grns
- Dol AA, incrs in qtz pebbles
- Dol, crm-tn-pnk, abund glauc, poor intxnØ,
- Snd, AA, few clusters, crm,
- Snd, wht, clusters, qtz grns, dolo cement, viabundnt
- Dol, tn, poor intxnØ, hrd-dns, NS
- Gran, red-drk red-blk, felds, qtz, biotite flakes
- Gran, drk red-blk, felds, felds crytls, biotite, qtz, hrd-dns
- Gran, drk red-blk, felds, biotite, qtz, hrd-dns

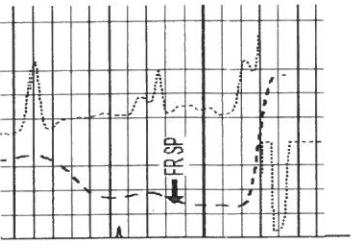




LTD 3659 (-1611) RTD 3660 (-1612)

-Gran, drk red-blk, felds, felds,
cnyls, biotite, qtz, hrd-dns

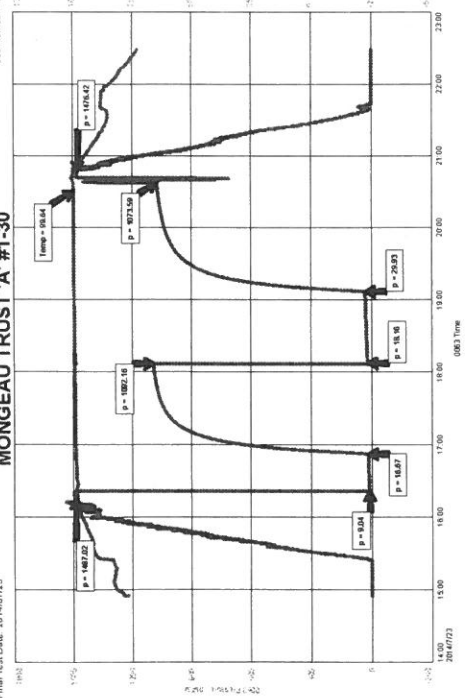
-Gran, drk red-blk, felds, biotite,
qtz, hrd-dns



TRANS PACIFIC OIL CORPORATION
DST#1 3117-3211 LOWER TOREKA
Spot Test Date: 20/14/07/23
Final Test Date: 20/14/07/23
Job Number: M878

MONGEAU TRUST 'A' #1-30

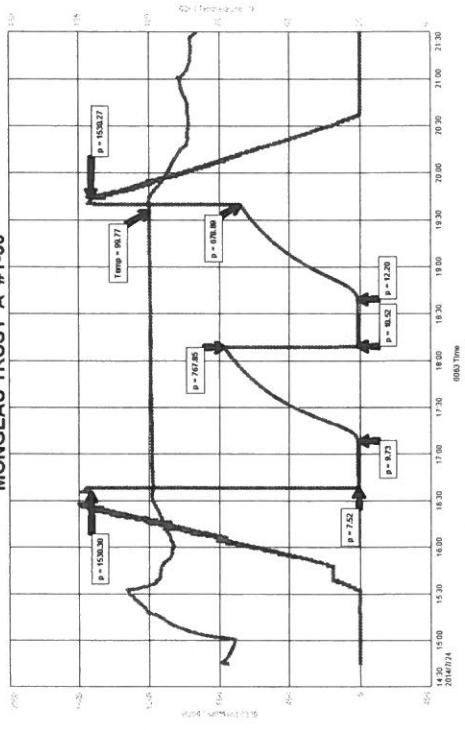
MONGEAU TRUST 'A' #1-30
Formation DST#1 3117-3211 LOWER TOREKA
Spot Test Date: 20/14/07/24
Final Test Date: 20/14/07/24
Job Number: M878



TRANS PACIFIC OIL CORPORATION
DST#2 3256-3274 TOP OF WILDCAT
Spot Test Date: 20/14/07/24
Final Test Date: 20/14/07/24
Job Number: M879

MONGEAU TRUST 'A' #1-30

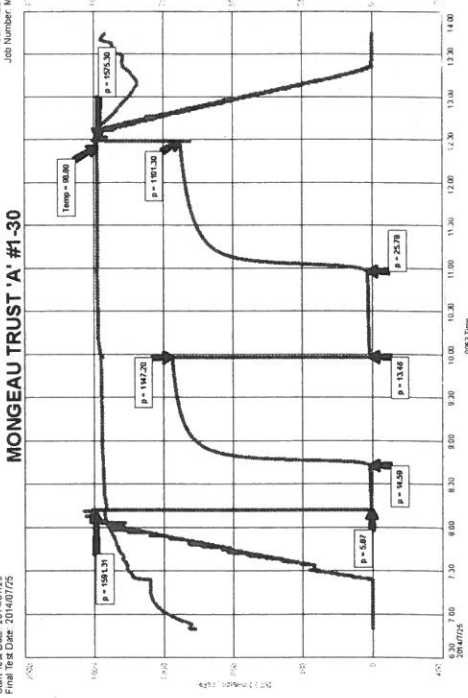
MONGEAU TRUST 'A' #1-30
Formation DST#2 3256-3274 TOP OF WILDCAT
Spot Test Date: 20/14/07/24
Final Test Date: 20/14/07/24
Job Number: M879



TRANS PACIFIC OIL CORPORATION
DST#3 3332-3352 LANS 50-70
Spot Test Date: 20/14/07/25
Final Test Date: 20/14/07/25
Job Number: M880

MONGEAU TRUST 'A' #1-30

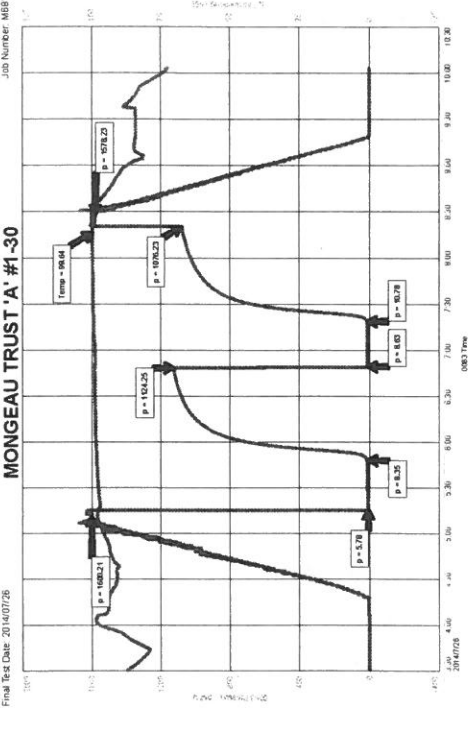
MONGEAU TRUST 'A' #1-30
Formation DST#3 3332-3352 LANS 50-70
Spot Test Date: 20/14/07/25
Final Test Date: 20/14/07/25
Job Number: M880



TRANS PACIFIC OIL CORPORATION
DST#4 3358-3374 LANS 80-100
Spot Test Date: 20/14/07/26
Final Test Date: 20/14/07/26
Job Number: M881

MONGEAU TRUST 'A' #1-30

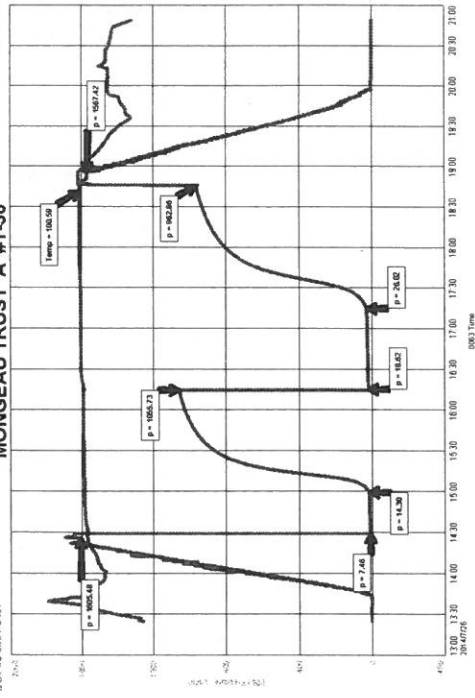
MONGEAU TRUST 'A' #1-30
Formation DST#4 3358-3374 LANS 80-100
Spot Test Date: 20/14/07/26
Final Test Date: 20/14/07/26
Job Number: M881



TRANS PACIFIC OIL CORPORATION
DST#5 3440-3485 LANS 180-200-220
Spot Test Date: 20/14/07/28
Final Test Date: 20/14/07/28
Job Number: M882

MONGEAU TRUST 'A' #1-30

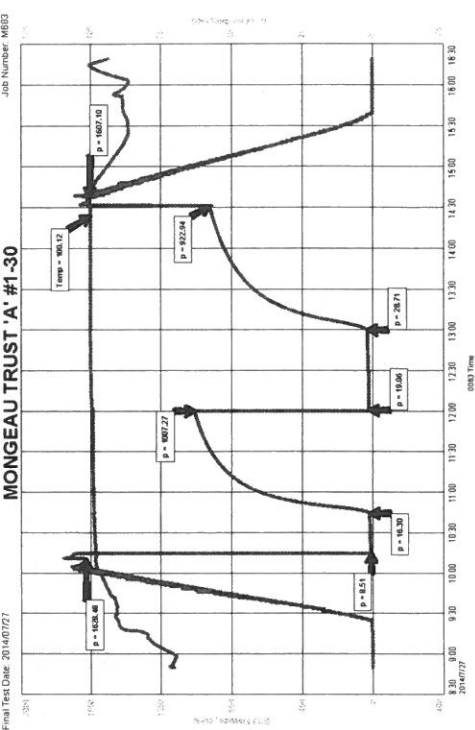
MONGEAU TRUST 'A' #1-30
Formation DST#5 3440-3485 LANS 180-200-220
Spot Test Date: 20/14/07/27
Final Test Date: 20/14/07/27
Job Number: M882



TRANS PACIFIC OIL CORPORATION
DST#6 3480-3495 LANS 180-200-220
Spot Test Date: 20/14/07/27
Final Test Date: 20/14/07/27
Job Number: M883

MONGEAU TRUST 'A' #1-30

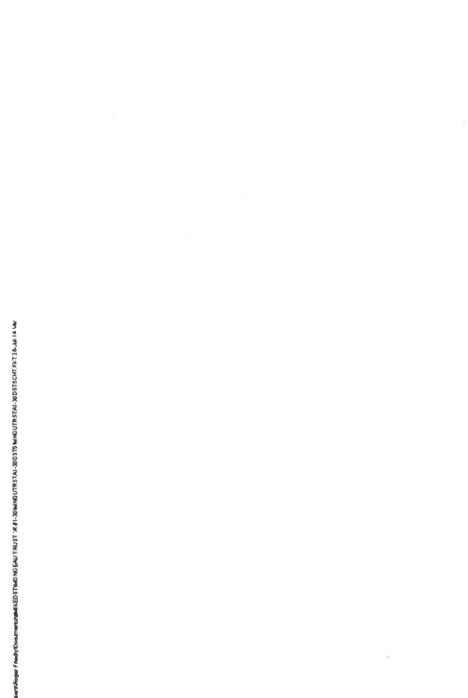
MONGEAU TRUST 'A' #1-30
Formation DST#6 3480-3495 LANS 180-200-220
Spot Test Date: 20/14/07/27
Final Test Date: 20/14/07/27
Job Number: M883



TRANS PACIFIC OIL CORPORATION
DST#7 3525-3545 LANS 180-200-220
Spot Test Date: 20/14/07/28
Final Test Date: 20/14/07/28
Job Number: M884

MONGEAU TRUST 'A' #1-30

MONGEAU TRUST 'A' #1-30
Formation DST#7 3525-3545 LANS 180-200-220
Spot Test Date: 20/14/07/28
Final Test Date: 20/14/07/28
Job Number: M884



TRANS PACIFIC OIL CORPORATION
DST#8 3585-3615 LANS 180-200-220
Spot Test Date: 20/14/07/28
Final Test Date: 20/14/07/28
Job Number: M885

MONGEAU TRUST 'A' #1-30

MONGEAU TRUST 'A' #1-30
Formation DST#8 3585-3615 LANS 180-200-220
Spot Test Date: 20/14/07/28
Final Test Date: 20/14/07/28
Job Number: M885

