



Geologist's Report

Company: Robert F. Hembree
Lease: Schwartzkopf 'K' #2
Field: McDonald Northeast
Surface Location: W2-SE-SW-SW (330' FSL & 823' FWL)
Sec: 35 **Twp:** 18S **Rge:** 24W
County: Ness **State:** Kansas
GL: 2314' **KB:** 2321'

Contractor: Pickrell Rig #10
Spud: 8/19/14 **Comp:** 8/25/14
RTD: 4343' **LTD:** 4342'
Mud Up: 3500' **Mud Type:** Chemical Displaced

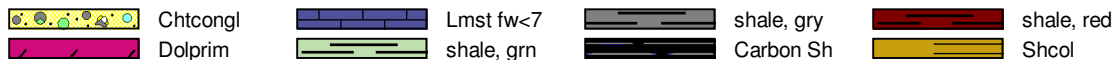
Drilling Time Kept From: 3600' to RTD
Samples Saved From: 3600' to RTD
Samples Examined: 3600' to RTD
Geological Supervision: 3600' to RTD
Geologist on Well: Clint Musgrove

Surface Casing: 8 5/8" @ 222'
Production Casing: 4 1/2" @ 4342'

Wireline Logs: By Pioneer: CNL/CDL, DIL, MEL

Well Comparison

ROCK TYPES



OTHER SYMBOLS

EVENTS

- ⌋ Casing Shoe
- ▷ RTF
- ▶ Sidewall
- ▲ Left Casing Shoe
- ▼ Right Casing Shoe

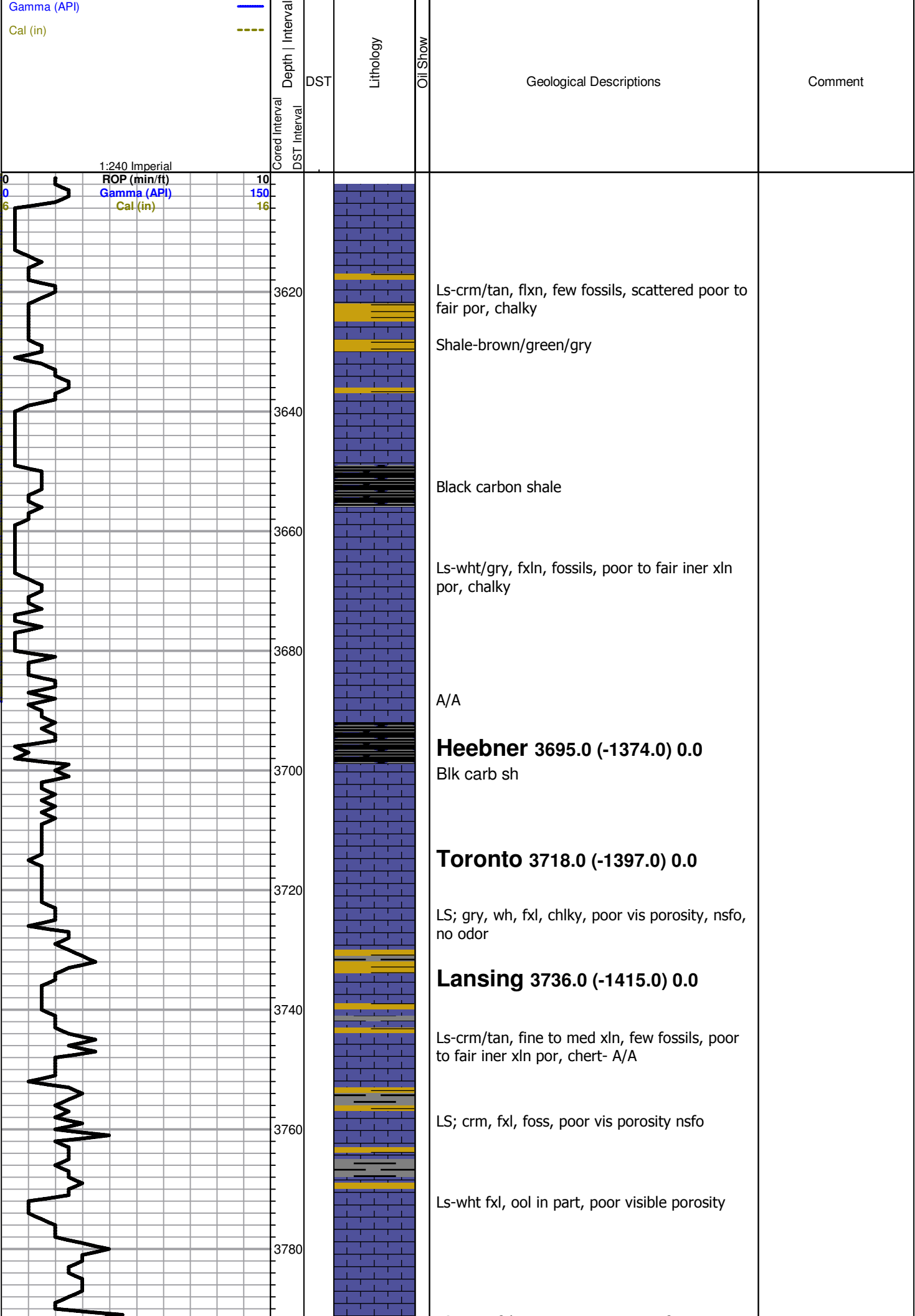
INTERVALS

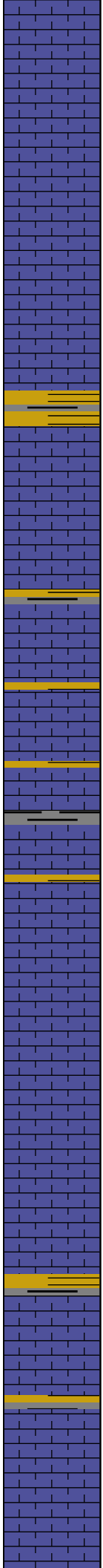
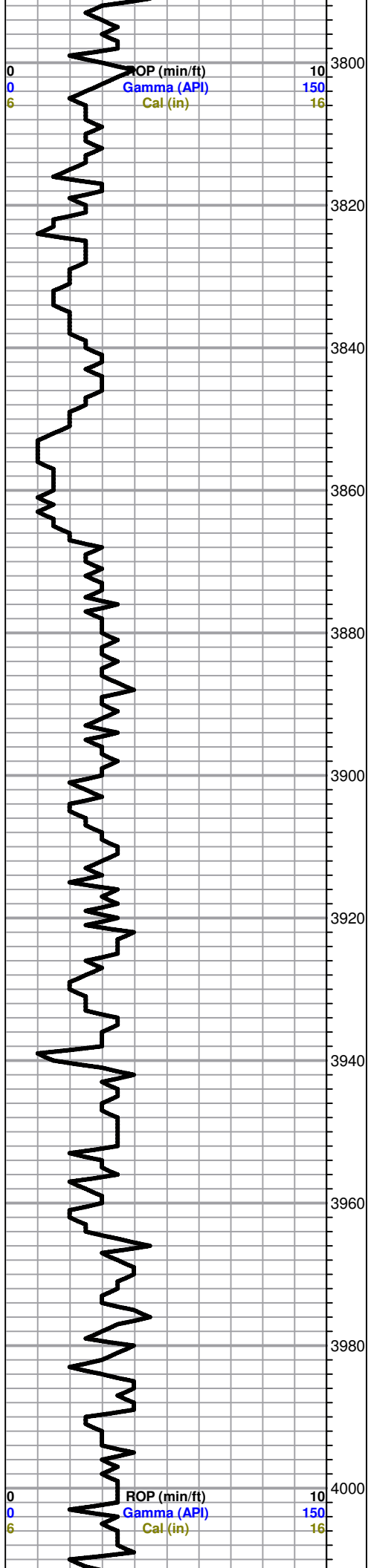
- Core
- DST

DST

- DST Int
- DST alt

Curve Track #1					
ROP (min/ft)	—	∞			





LS; crm, fxl, scatt ppt porosity, nsfo

LS-wht/crm, fxl, highly ool, poor vis por, boney wht chert,

LS: crm, fxl, scatt ppt oom porosity, nsfo no odor

LS; crm, fxl, scatt oom porosoty, (barren)

LS: crm, fxl, foss, poor vis porosity, nsfo

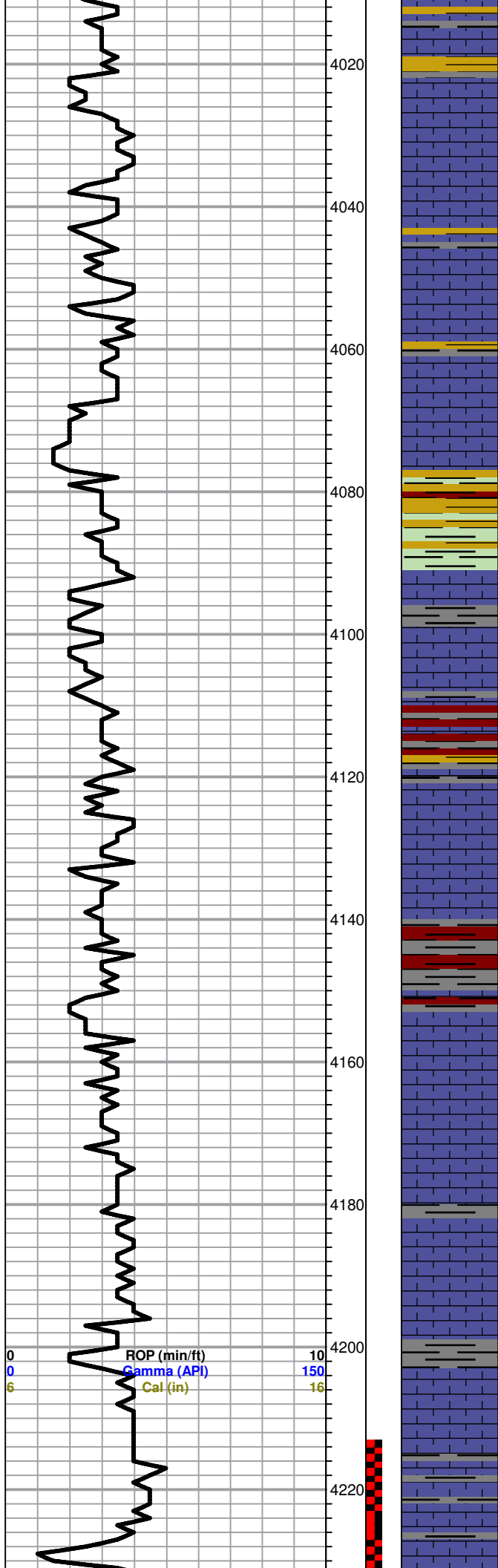
LS-wht/lt gry, fxl, dense, slightly ool, poor vis por

LS-wht/crm, fxl, ool, scattered iner ool, to sub oom por, chlky

LS-wht/crm, fxl, ool, poor scattered por, chalky, chert-boney wh

LS-crm/tan, fxl, highly oom poor vis por,

LS-crm/tan, fxl, highly ool, poo riner ool to sub oom por, chalky



Ls-crm/wht, fxln, ool, poor vis por, chalky, cherty

Ls-crm/tan, fxln, ool, few fossils, scattered oom por

Base KC 4046.0 (-1725.0) 0.0

Ls-crm/tan, fxl, highly ool, poor vis por, cherty in part

Ls-crm/lt gry, fxl, ool, fossils, scattered vis porosity

Marmaton 4069.0 (-1748.0) 0.0

Sh. gry/ gren VC

LS; tan, buff, xln, ft blk stn, nsfo, poor vis porosity

LS; crm, fxl, scatt vis porosity, nsfo, no odor

Shale-gry/brown

Ls-wht/gry, fxln, poor vis por, trace wht chert-fossils

Shale-gry/maroon/brwn

Pawnee 4153.0 (-1832.0) 0.0

LS crm/tan, fxl, suc, chlky

Sh gry/ green shof

LS; crm, fxl, cherty, nsfo, poor vis porosity

Ls-A/A

Ls-wht/lt gry, fxln, few fossils/ool, cherty in part, dense

Shale-gry/grn soft

Fort Scott 4230.0 (-1909.0) 0.0

**DST #1 4214-4258
30-45-45-60**

Blow: BOB 6 mins
2nd: BOB 7.5 mins

Recovery:
567' MCW(95%W,
5%M)
375 GOSMCW

