



NOTES

Company: American Warrior, Inc.Lease: Clark 6-2Field: PiercevilleLocation: 1467' FSL & 379' FELSec: 2 Twsp: 25S Rge: 31WCounty: Seward State: KansasKB: 2855' GL: 2844'API #: 15-055-22-339-00-00Contractor: Duke Drilling Inc. (Rig #10)Spud: 08/22/2014 Comp: 08/31/2014RTD: 5050' LTD: 5049'Mud Up: 4500' Type Mud: ChemicalSamples Saved From: 4600' to RTDDrilling Time Kept From: 4600' to RTDSamples Examined From: 4600' to RTDGeological Supervision from: 4600' to RTDGeologist on Well: Wyatt UrbanSurface Casing: 8 5/8@ 1694'Electronic Surveys: Logged by: Pioneer Energy Service CNL/CDL, DIL, Micro


Image Header 02

American Warrior Well Comparison

DRILLING WELL					COMPARISON WELL			
American Warrior- Clark 6-2 1467' FSL & 379' FEL 2-25S-31W 2855 KB					American Warrior - Clark 7-2 2046' FSL & 335' FEL 2-25S-31W 2857 KB			
					Structural Relationship			
Formation	Sample	Sub-Sea	Log	Sub-Sea	Log	Sub-Sea	Sample	Log
Heebner	4020	-1165	4020	-1165	4021	-1164	-1	-1
Lansing	4071	-1216	4071	-1216	4067	-1210	-6	-6
Stark	4431	-1576	4431	-1576	4428	-1571	-5	-5
BKC	4560	-1705	4560	-1705	4557	-1700	-5	-5

Marmaton	4589	-1734	4589	-1734	4582	-1725	-9	-9
Pawnee	4661	-1806	4661	-1806	4655	-1798	-8	-8
Ft. Scott	4683	-1828	4683	-1828	4678	-1821	-7	-7
Cherokee	4700	-1845	4698	-1843	4693	-1836	-9	-7
Morrow	4862	-2007	4863	-2008	4853	-1996	-11	-12
Miss	4880	-2025	4880	-2025	4873	-2016	-9	-9
RTD	5050	-2195	5050	-2195	5050	-2193	-2	-2
LTD	5049	-2194	5049	-2194	5048	-2191	-3	-3

Image Header 03

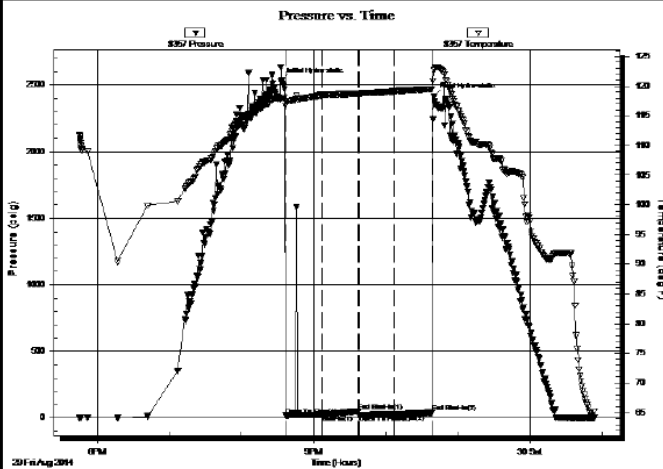
	DRILL STEM TEST REPORT	
	American Warrior, INC. POB 399 Garden City KS, 67846 ATTN: Wyatt Urban	S2-25s-31w Finney, KS Clark 6-2 Job Ticket: 57380 DST#: 1 Test Start: 2014.08.29 @ 17:45:00

GENERAL INFORMATION:

Formation: **Morrow Sand**
 Deviated: No Whipstock: 0.00 ft (KB)
 Time Tool Opened: 20:36:50
 Time Test Ended: 00:53:50
 Interval: **4838.00 ft (KB) To 4894.00 ft (KB) (TVD)**
 Total Depth: 4894.00 ft (KB) (TVD)
 Hole Diameter: 7.88 inches Hole Condition: Good
 Test Type: Conventional Bottom Hole (Initial)
 Tester: Chuck Smith
 Unit No: 61
 Reference Elevations: 2855.00 ft (KB)
 2844.00 ft (CF)
 KB to GR/CF: 11.00 ft

Serial #: 8357 **Inside**
 Press@RunDepth: 28.92 psig @ 4840.00 ft (KB) Capacity: 8000.00 psig
 Start Date: 2014.08.29 End Date: 2014.08.30 Last Calib.: 2014.08.30
 Start Time: 17:45:02 End Time: 00:53:50 Time On Btm: 2014.08.29 @ 20:33:10
 Time Off Btm: 2014.08.29 @ 22:40:10

TEST COMMENT: 30- No blow , flushed tool, surge died.
 30- No return.
 30- No blow .
 30- No return.



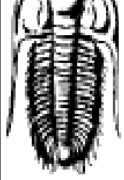
PRESSURE SUMMARY			
Time (Min.)	Pressure (psig)	Temp (deg F)	Annotation
0	2529.54	117.94	Initial Hydro-static
4	19.51	116.67	Open To Flow (1)
34	24.67	118.48	Shut-h(1)
64	53.31	118.75	End Shut-h(1)
65	24.12	118.74	Open To Flow (2)
94	28.92	119.12	Shut-h(2)
126	41.21	119.52	End Shut-h(2)
127	2412.46	122.62	Final Hydro-static

Recovery		
Length (ft)	Description	Volume (bbl)
5.00	M 100m	0.07

Gas Rates			
	Choke (inches)	Pressure (psig)	Gas Rate (Mcf/c)

Image Header 04

	DRILL STEM TEST REPORT	



HILOBITE TESTING, INC.

American Warrior, INC.
 POB 399
 Garden City KS, 67846
 ATTN: Wyatt Urban

S2-25s-31w Finney, KS

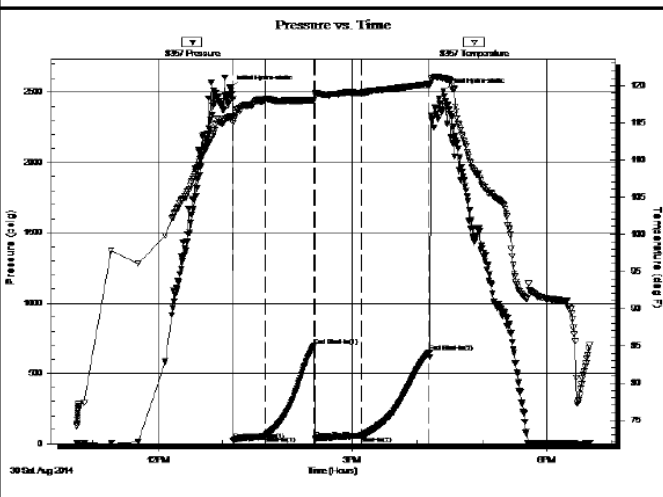
Clark 6-2
 Job Ticket: 57381 **DST#:** 2
 Test Start: 2014.08.30 @ 10:45:00

GENERAL INFORMATION:

Formation: **St. Louis**
 Deviated: No Whipstock: 0.00 ft (KB)
 Time Tool Opened: 13:09:30
 Time Test Ended: 18:40:00
 Interval: **4904.00 ft (KB) To 4950.00 ft (KB) (TVD)**
 Total Depth: 4950.00 ft (KB) (TVD)
 Hole Diameter: 7.88 inches Hole Condition: Good
 Test Type: Conventional Bottom Hole (Reset)
 Tester: Chuck Smith
 Unit No: 61
 Reference Elevations: 2855.00 ft (KB)
 2844.00 ft (CF)
 KB to GR/CF: 11.00 ft

Serial #: 8357 Inside
 Press@RunDepth: 58.59 psig @ 4906.00 ft (KB) Capacity: 8000.00 psig
 Start Date: 2014.08.30 End Date: 2014.08.30 Last Calib.: 2014.08.30
 Start Time: 10:45:02 End Time: 18:40:00 Time On Btm: 2014.08.30 @ 13:07:20
 Time Off Btm: 2014.08.30 @ 16:24:20

TEST COMMENT: 30- 4" Blow .
 45- No return.
 45- 5" Blow built to B.O.B. @ 10 minutes.
 60- No return.



PRESSURE SUMMARY

Time (Min.)	Pressure (psig)	Temp (deg F)	Annotation
0	2526.17	115.79	Initial Hydro-static
3	23.01	114.99	Open To Flow (1)
32	56.07	118.16	Shut-in(1)
77	695.32	118.04	End Shut-in(1)
79	35.83	118.92	Open To Flow (2)
121	58.59	119.01	Shut-in(2)
184	652.48	120.17	End Shut-in(2)
198	2507.17	121.03	Final Hydro-static

Recovery

Length (ft)	Description	Volume (bbl)
55.00	GOCM 45g 2o 53m	0.77
45.00	GOWCM 10g 1o 2w 87m	0.63
0.00	140' Weak GIP	0.00

* Recovery from multiple tests

Gas Rates

	Choke (inches)	Pressure (psig)	Gas Rate (Mcf/c)

ROCK TYPES

- sdy lmst
- Lmst fw7>
- Carbon Sh
- Lmst fw<7
- shale, grn
- Ss

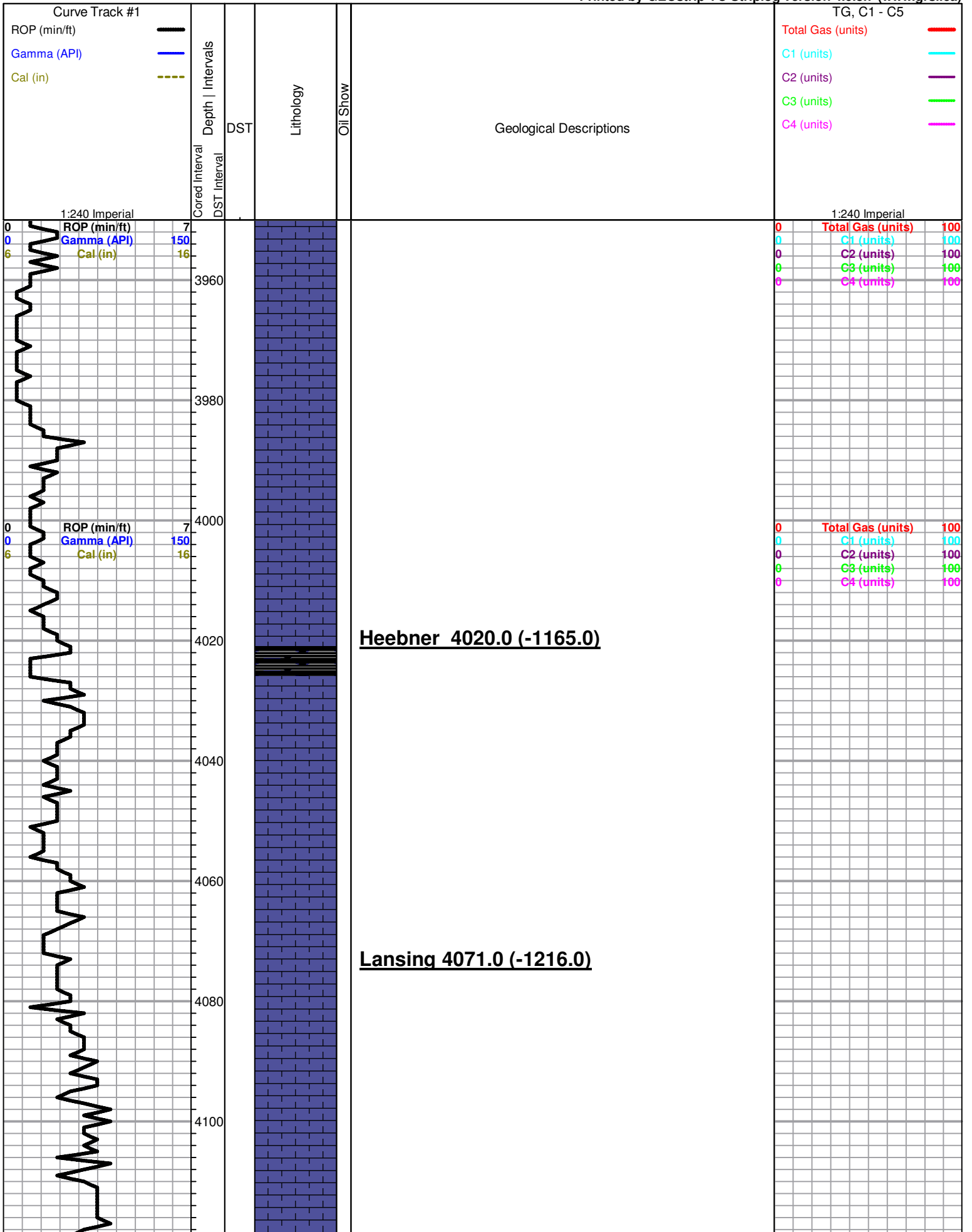
ACCESSORIES

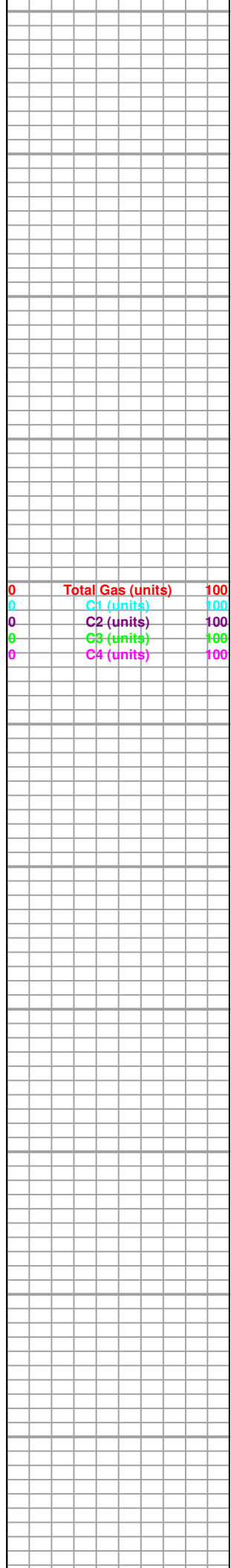
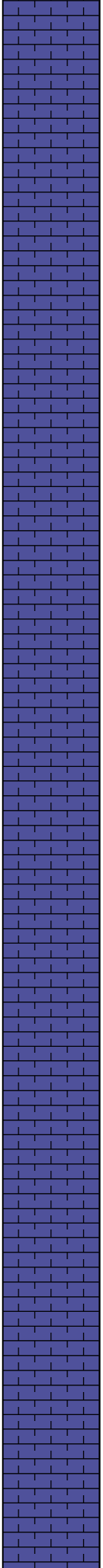
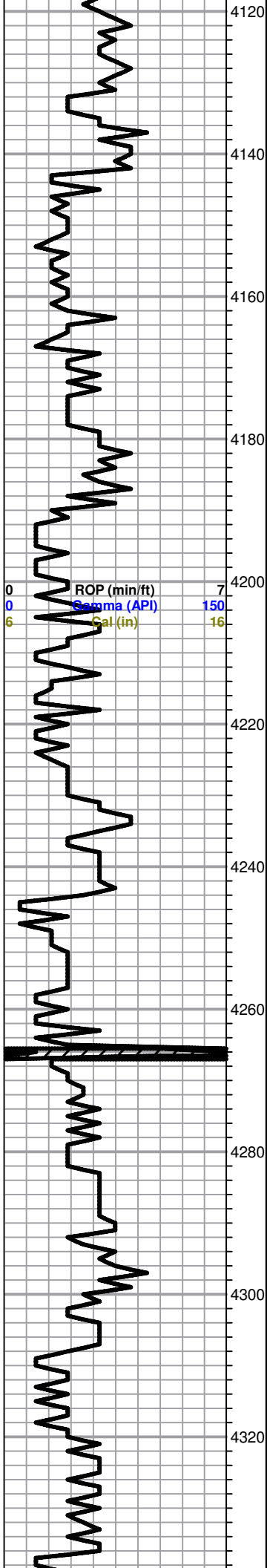
- FOSSIL**
φ Oolite
- STRINGER**
~~~~ Chert

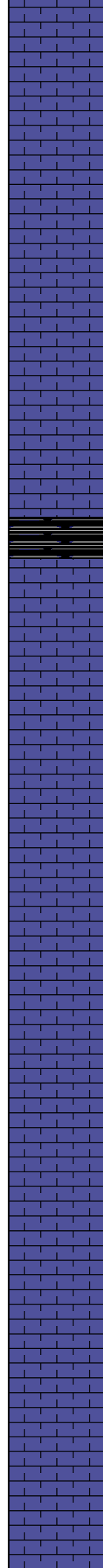
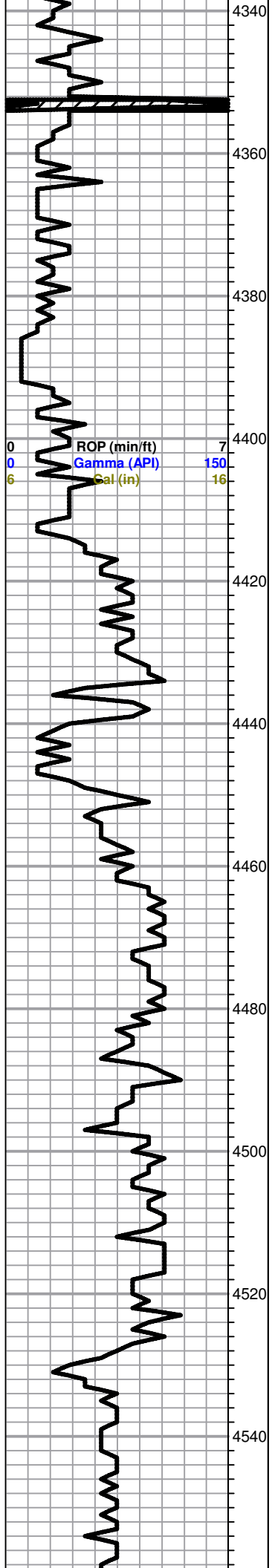
**OTHER SYMBOLS**

- Oil Show**  
● Good Show  
● Fair Show  
● Poor Show  
○ Spotted or Trace
- DST**  
■ DST Int  
■ DST alt  
■ Core  
|| tail pipe

- Questionable Stn
- Dead Oil Stn
- Fluorescence
- \* Gas

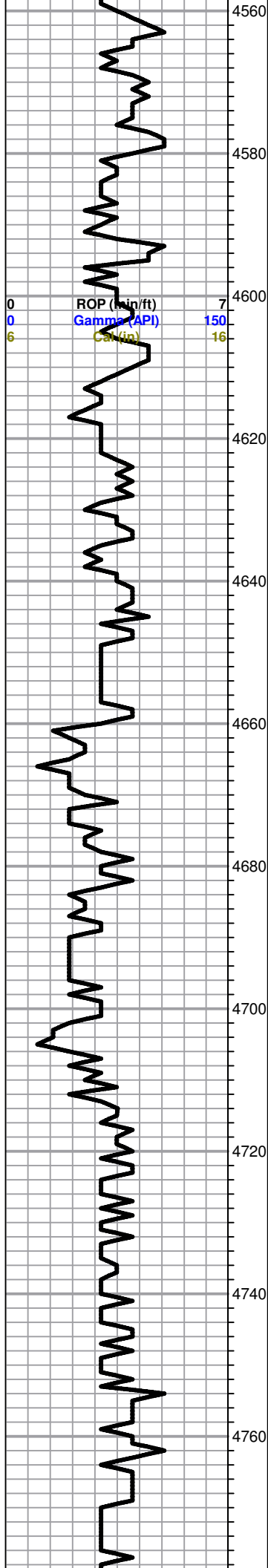






**BKC 4431.0 (-1576.0)**

|   |                   |     |
|---|-------------------|-----|
| 0 | Total Gas (units) | 100 |
| 0 | C1 (units)        | 100 |
| 0 | C2 (units)        | 100 |
| 0 | C3 (units)        | 100 |
| 0 | C4 (units)        | 100 |



**Marmaton 4589.0 (-1734.0)**

|   |                   |     |
|---|-------------------|-----|
| 0 | Total Gas (units) | 100 |
| 0 | C1 (units)        | 100 |
| 0 | C2 (units)        | 100 |
| 0 | C3 (units)        | 100 |
| 0 | C4 (units)        | 100 |

LS, cream, white, FXL, few foss, poor visible porosity, no shows

**Pawnee 4661.0 (-1806.0)**

Black carb Sh.

LS, tan, brown FXL, dense, poor visible porosity, few foss, N/S

**Ft. Scott 4683.0 (-1828.0)**

Black carb Sh.

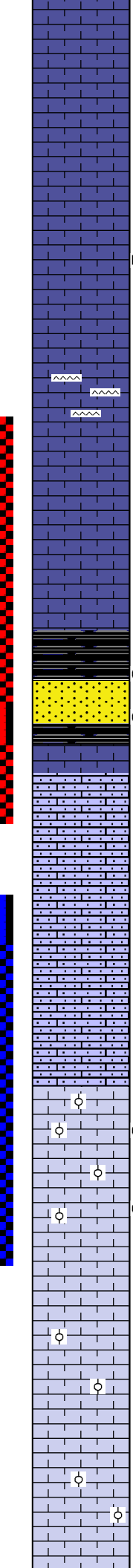
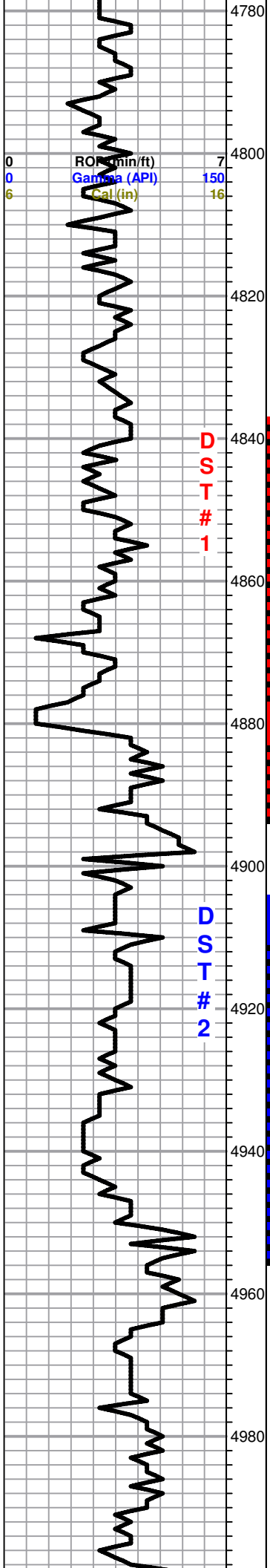
**Cherokee 4700.0 (-1845.0)**

Black carb Sh.

LS, tan, buff, FXL, cherty, poor visible porosity, no shows

LS, brown, tan, FXL, dense, poor visible porosity, few foss, no shows

LS, A/A,  
Slug gry, silty sh.



LS, cream, tan, FXL, cherty, poor visible porosity, dense, no shows

LS, buff, tan, FXL, V. chalky, poor visible porosity, Lt. flor. cut, NSFO, no odor

LS, buff, tan, FXL, dense, poor scattered porosity, Trc. tan, opaque Chert

LS, tan, buff, brown, FX, few foss, poor scattered porosity, no shows

Sh. maroon, gry, black

**Morrow 4862.0 (-2007.0)**

Sh. maroon, gry, black, Trc. Sd. gry, F. grain, well sorted, Lt. SFO, Strong Odor

Sd. gry, F. grain, wel sorted, Lt. SFO, odor, Trc. black stain,

**Miss 4881.0 (-2026.0)**

LS, tan, white, FXL, dense, cherty, no shows

LS, tan, brown, sub oom, friable, no shows

LS, tan, brown, sub oom, friable, no shows

LS, tan, white, ool, poor vuggy, oom, porosity, Lt. spotty SFO, trc. brown stain,

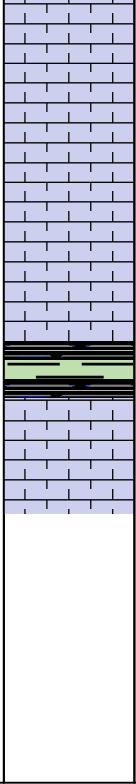
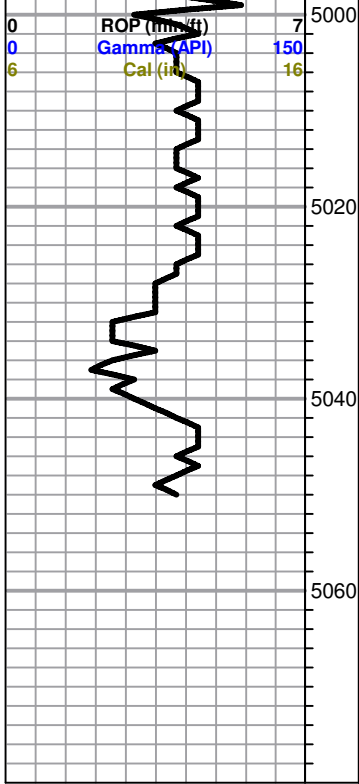
LS, tan, oom, poor to fair oom vuggy porosity, chalky, good SFO when broken, golden brown stain, no odor

LS, cream, white, ool, poorly developed, chalky, poor scattered porosity, no shows

LS, tan, white, F-med XLN, ool, chalky, poor scattered porosity, no shows

|   |                   |     |
|---|-------------------|-----|
| 0 | Total Gas (units) | 100 |
| 0 | C1 (units)        | 100 |
| 0 | C2 (units)        | 100 |
| 0 | C3 (units)        | 100 |
| 0 | C4 (units)        | 100 |





LS, tan, F-Med XLN, ool, chalky, poor scattered porosity, no shows

LS, A/A

Slug of back carb, green, maroon shale

**RTD 5050' LTD 5048'**

|   |                   |     |
|---|-------------------|-----|
| 0 | Total Gas (units) | 100 |
| 0 | C1 (units)        | 100 |
| 0 | C2 (units)        | 100 |
| 0 | C3 (units)        | 100 |
| 0 | C4 (units)        | 100 |