

**WellSight Systems**  
Scale 1:240 (5"=100') Imperial  
Measured Depth Log

<b>Well Name:</b> Reeves B1			
<b>Location:</b> Section 15 - T31S - 9E			
<b>License Number:</b> API# 15-049-22600		<b>Region:</b> Elk County	
<b>Spud Date:</b>		<b>Drilling Completed:</b>	
<b>Surface Coordinates:</b> 1980' FNL & 200' FWL	<b>LAT</b>	37.3545920	
	<b>LONG</b>	-96.4161769	
<b>Bottom Hole Coordinates:</b>			
<b>Ground Elevation (ft):</b> 1180'		<b>K.B. Elevation (ft):</b> 1186'	
<b>Logged Interval (ft):</b> 1400'	<b>To: 2622'</b>	<b>Total Depth (ft):</b> RTD 2650', LTD 2643'	
<b>Formation:</b> Arbuckle			
<b>Type of Drilling Fluid:</b> Chemical/Polymer/gel			

Printed by STRIP.LOG from WellSight Systems 1-800-447-1534 [www.WellSight.com](http://www.WellSight.com)

**OPERATOR**

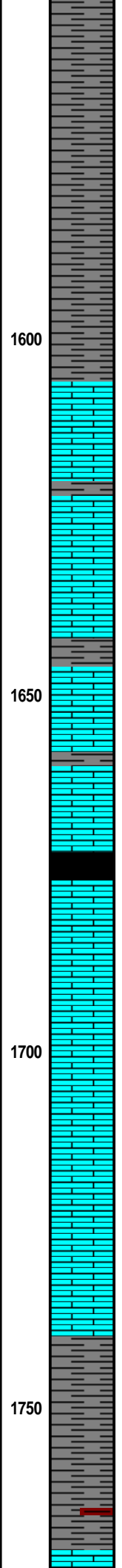
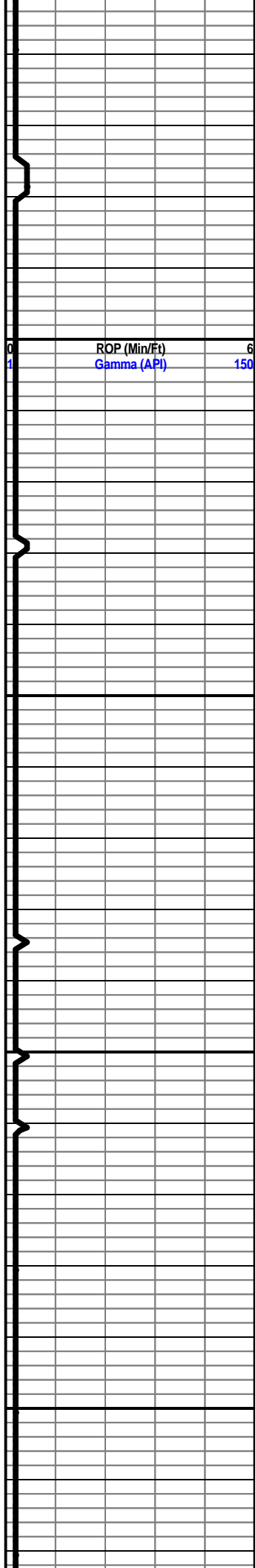
**Company:** Lone Wolf Oil Co.  
**Address:** Box 241  
Moline, KS 67353  
KLN 31119

**GEOLOGIST**

**Name:** Harley Sayles  
**Company:** Promontory, LLC.  
**Address:** 401 E Douglas Suite 515 A  
Wichita, KS 67202



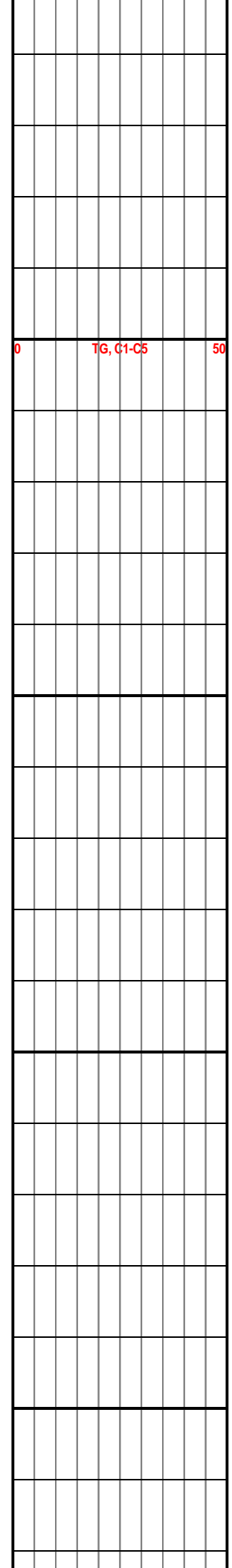




not observable, poor samples

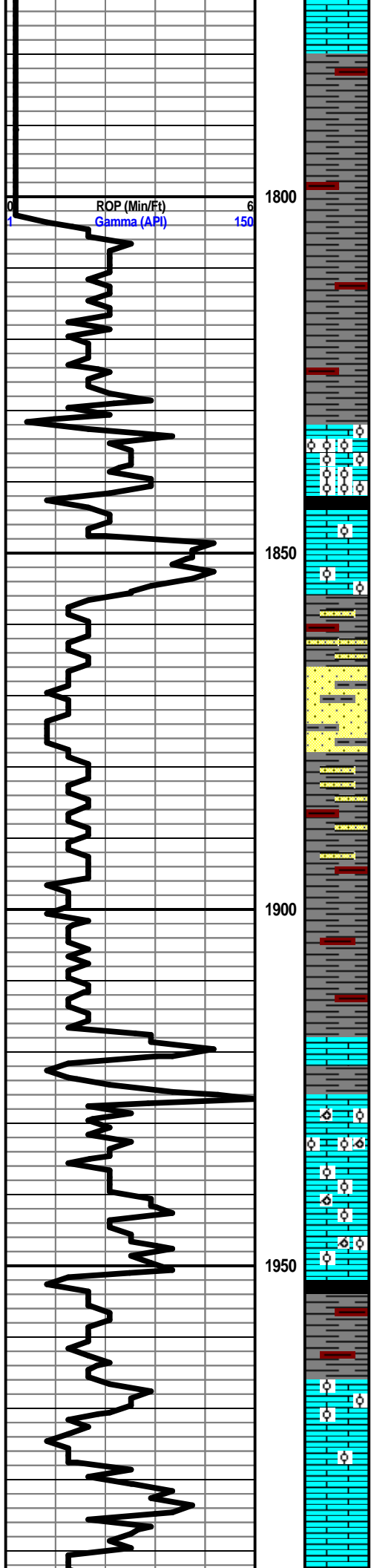
not observable, poor samples

not observable, poor samples



0 TG, C1-C5 50

not observable, poor samples



Sh., dk gry-reddish brn

1800

ROP (Min/Ft)  
Gamma (API)

0 TG, C1-C5 50

Sh., a.a.

Sh., gy-dk gy- reddish brn

**Altamont 1832 (-646)**

Ls., tan-lt brn, oolitic, barren

Sh., blk

1850

Ls., tan, slt oolitic

Sh., gy-reddish brn, sndy

Ss., gy, fn grn, sb rd, mod wl srted, fri, barren, shly

Sh., gy-reddish brn, sndy

1900

Sh., a.a.

Sh., gy-reddish brn

**Pawnee 1907 (-721)**

Ls., tan-dk tan, fn Xln, p oomoldic Por, FSFO on break, lt brn oil, good odor, few gas bubbles, par sat and stn, fri

Ls., a.a.

1950

Sh., blk

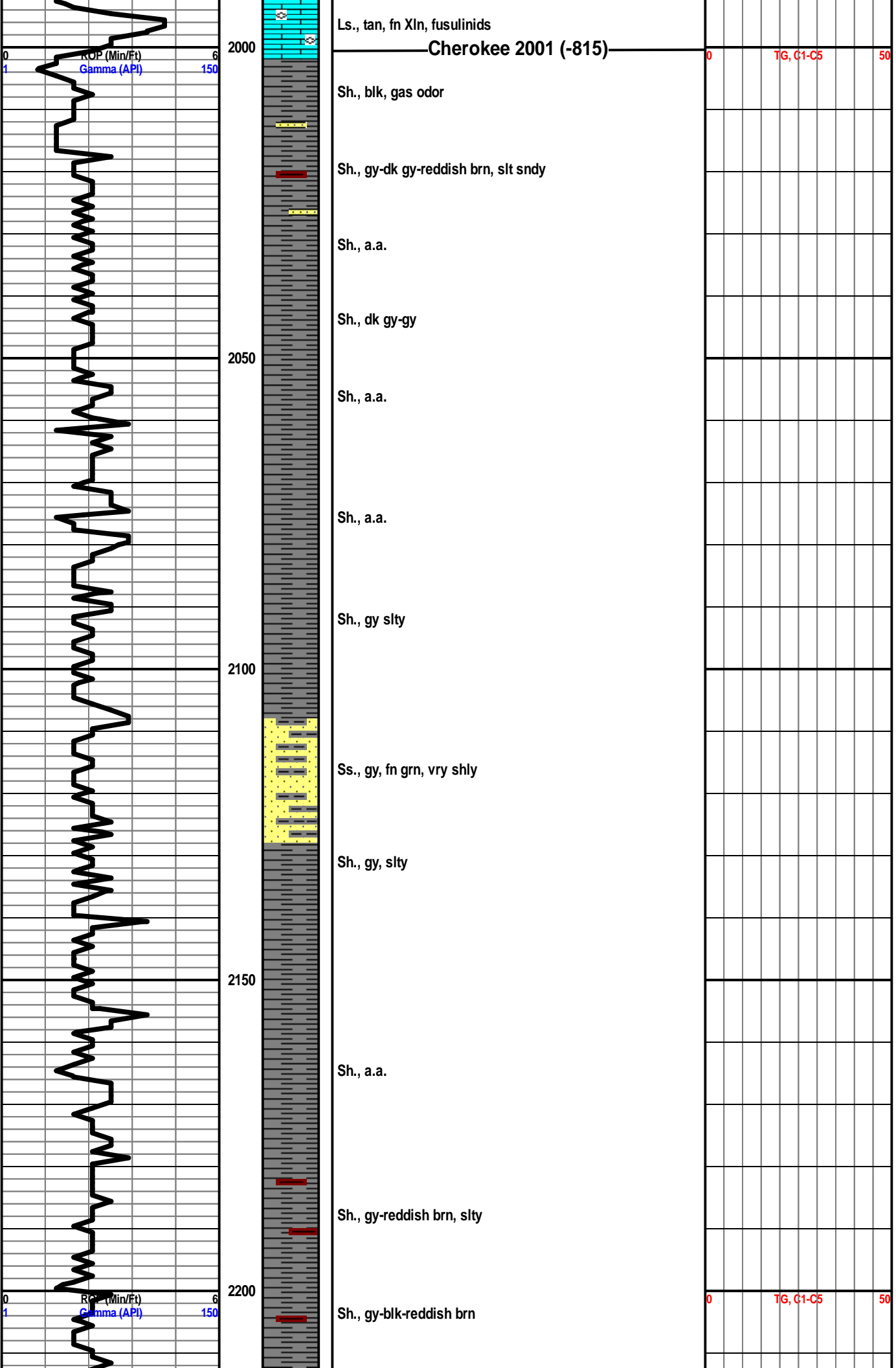
Sh., gy-reddish brn

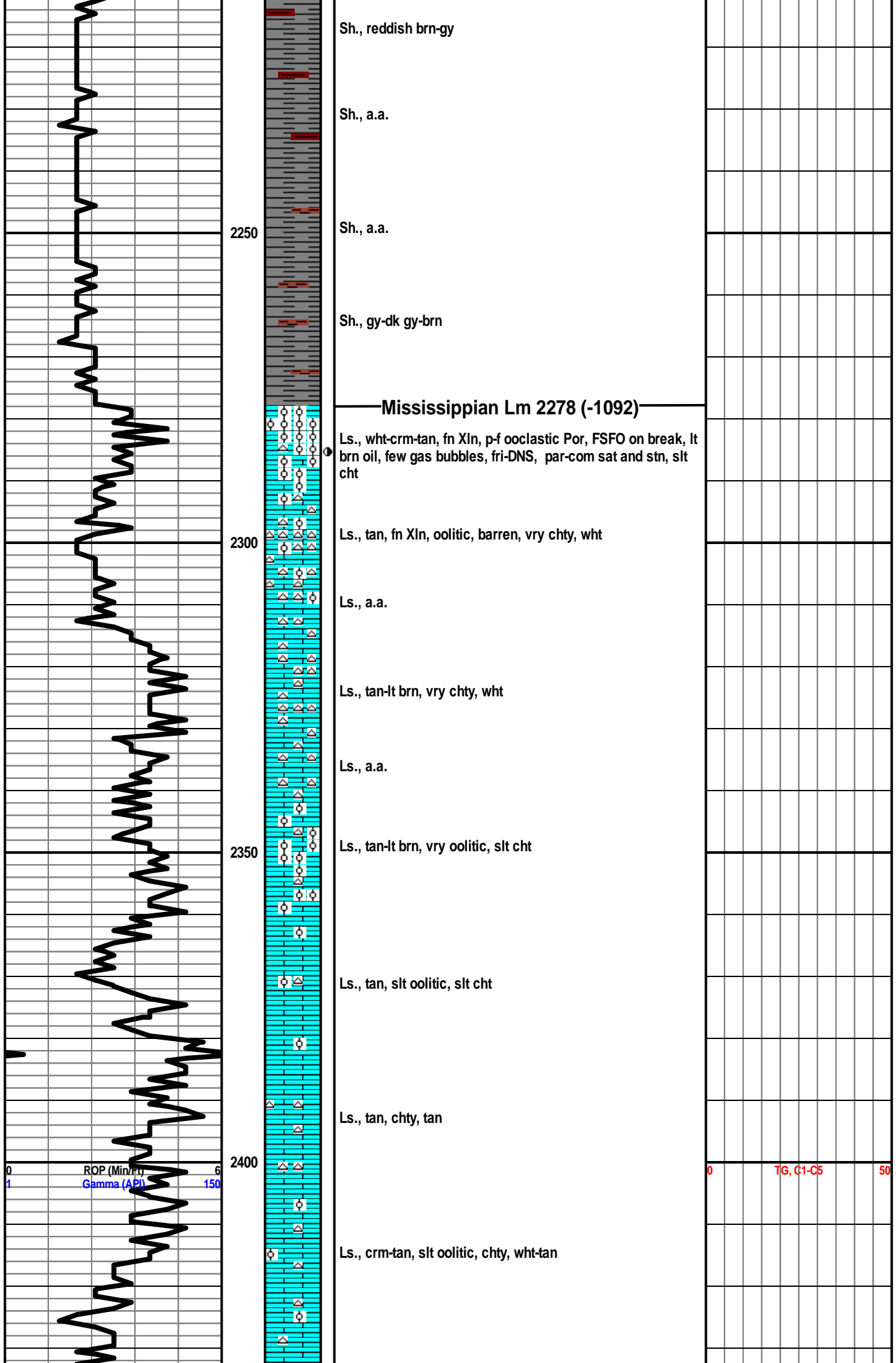
**Ft. Scott 1966 (-780)**

Ls., tan, fn Xln, p int Xln Por, p ooclastic Por, SSFO on break, lt brn oil, slt ofor, few gas bubbles, par sat and stn, fri-DNS

Sh., blk

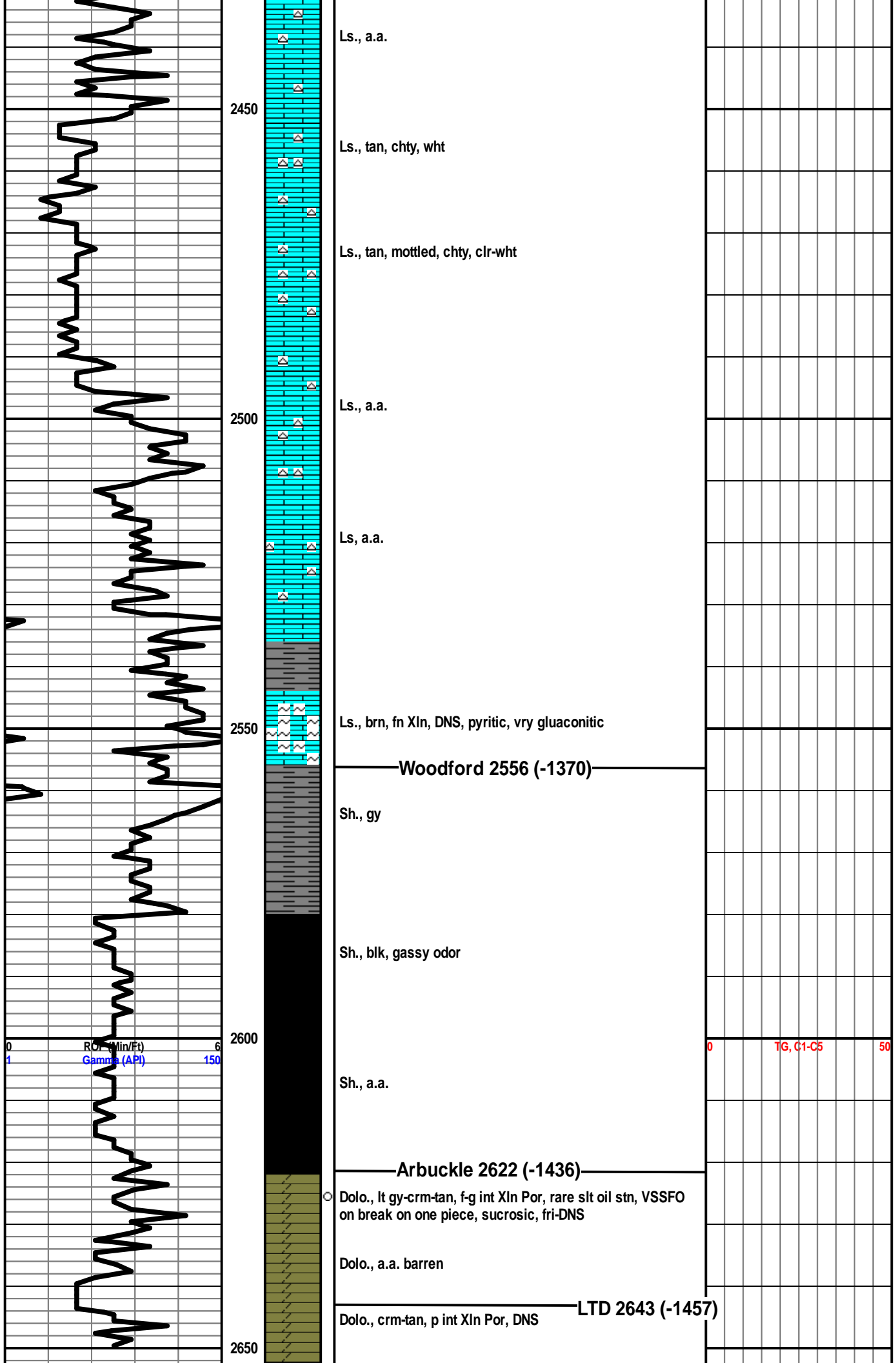
Ls., tan-dk tan, fn-sub Xln, DNS





ROP (Min/hr) 0 6  
Gamma (API) 1 150

0 TG, C1-C5 50





not observed, well deepened further after log was run

2700

2750

2800

2850

0 ROP (Min/Ft) 6  
1 Gamma (API) 150

0 TG, C1-C5 50

