

T 34 S - R 7 W (PRINCIPAL MERIDIAN)

(A) KAUP 3407 16-2H
(LOCATION STAKE)
NAD-27
440 FSL-920' P.M.L.
ELEV.: 1360' (PAD)
X = 2119792
Y = 151090
LAT: 37.080886257° N
LONG: 98.089386492° W

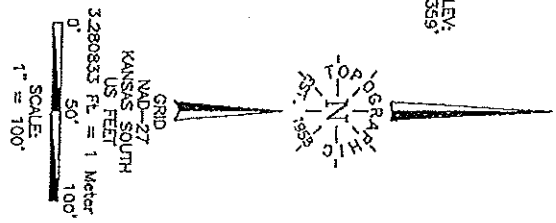
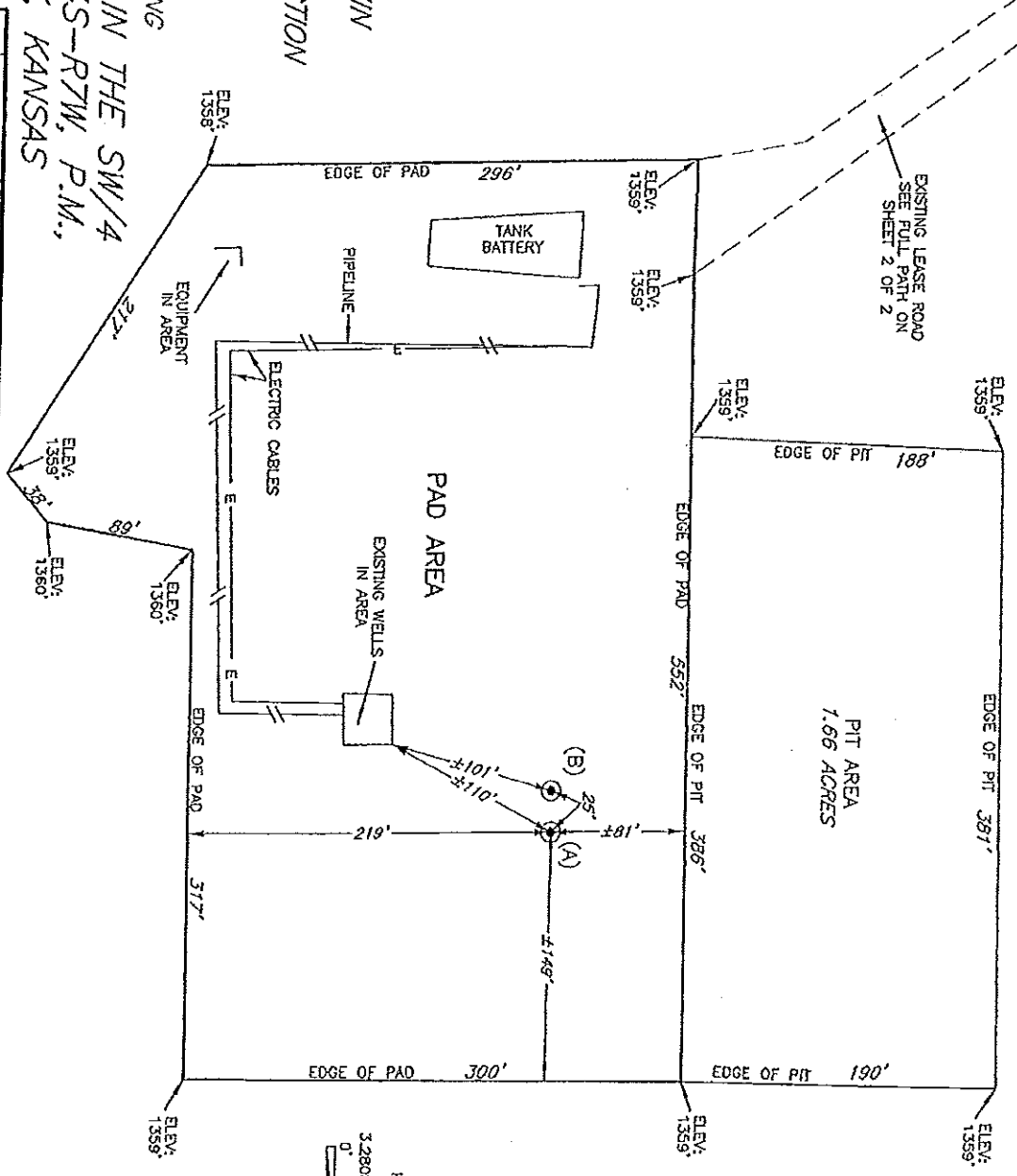
(B) ALTERNATIVE LOCATION
(LOCATION STAKE)
NAD-27
440 FSL-895' P.M.L.
ELEV.: 1360' (PAD)
X = 2119767
Y = 151090
LAT: 37.080885701° N
LONG: 98.089471995° W

SECTION 16
SW/4

TOTAL ACREAGE WITHIN
EDGE OF PAD, &
LEASE ROAD CONSTRUCTION
4.70 ACRES

PLAT SHOWING
EXISTING PAD AREA IN THE SW/4
OF SECTION 16, T34S-R7W, P.M.,
HARPER COUNTY, KANSAS

NOTE:
The information shown herein is for
construction purposes ONLY.



NO.	REVISION	DATE	BY
SURV. BY: RL 09-12-2014			
DRAWN BY: JP			
APPROVED BY: LG			

This plot was prepared exclusively for
TAPSTONE ENERGY
SUPERVISING AND MAPPING BY
TOPOGRAPHIC LAND SURVEYORS
6709 N. Classen, Okla. City, OK 73116 (405) 843-4947
Certificate of Authorization No. LS-59, Exp. December 31, 2015

SCALE:	1" = 100'
DATE:	09-16-2014
FILE:	L4012A1.DWG
DRAWING NUMBER:	120010-L4-012-A1
SHEET	1 OF 2