

**LINN OPERATING INC. EDWARDS A-5 ATU-449**

170' FNL  
 659' FEL  
 NE/4 OF NE/4 OF NE/4 OF  
 SECTION 33, T-29-S, R-39-W, STANTON CO., KS.  
 LATITUDE: 37°29'21.59755" N  
 LONGITUDE: 101°34'56.67953" W  
 GROUND ELEVATION: 3199.5'



**Keller**  
 Surveying &  
 Mapping

2330 D LAKEVIEW DRIVE  
 AMARILLO, TEXAS 79109  
 PH (806)418-5251

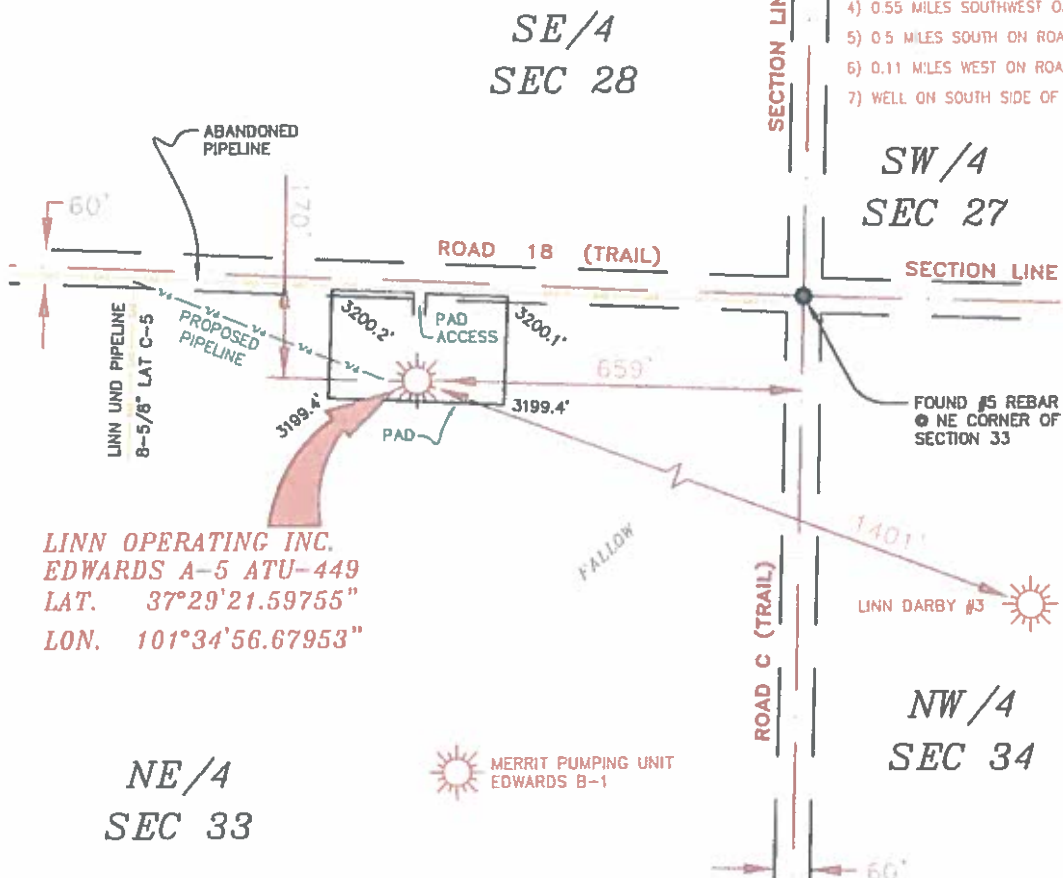
DRAWN BY: DMW  
 APPROVED BY: JDC  
 SCALE: 1" = 300'  
 DATE: 8/21/14

**LINN**  
**Energy**

2225 W CH. AHCMA AVE  
 ULYSSES, KANSAS 67806  
 PH (620)356-6940  
 FAX (620)356-6960

**DRIVING DIRECTIONS:**

- 1) 11 MILES WEST ON HWY 160
- 2) 5 MILES SOUTH ON BIG BOW GRADE
- 3) 0.8 MILES WEST ON ROAD 17
- 4) 0.55 MILES SOUTHWEST ON A GRADED ROAD
- 5) 0.5 MILES SOUTH ON ROAD C
- 6) 0.11 MILES WEST ON ROAD 18
- 7) WELL ON SOUTH SIDE OF ROAD 18



LINN OPERATING INC.  
 EDWARDS A-5 ATU-449  
 LAT. 37°29'21.59755"  
 LON. 101°34'56.67953"

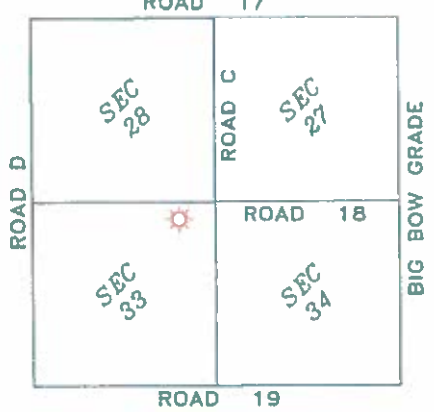
NE/4  
 SEC 33

MERRIT PUMPING UNIT  
 EDWARDS B-1

NW/4  
 SEC 34

**NOTES:**

- 1) THIS PLAN DOES NOT REPRESENT A FINAL BOUNDARY SURVEY. THE BOUNDARIES AND TIES SHOWN ARE FROM LINES OF SURVEY WHICH MAY NOT BE ACTUAL PROPERTY LINES.
- 2) CONSTRUCTION TO CONTACT ONE OR MORE OF THE ABOVE UTILITY LOCATIONS PRIOR TO ANY EXCAVATION OR CONSTRUCTION.
- 3) NAD 83 UTM 14Q UTM



T-29-S, R-39-W  
 STANTON COUNTY, KANSAS



JOHN DAVID KELLER, L.S. NO. 1518

**LINN OPERATING INC.**  
**EDWARDS A-5 ATU-449**  
 SEC. 27, 28, 33 & 34, T-29-S, R-39-W  
 STANTON COUNTY, KANSAS

# PLAT AND CERTIFICATION OF ACREAGE ATTRIBUTABLE TO A GAS WELL

Kansas Corporation Commission, Conservation Division  
 Finney State Office Building, 130 South Market, Room 2078  
 Wichita, Kansas 67202

API NUMBER 15- \_\_\_\_\_

LOCATION OF WELL: COUNTY Stanton

OPERATOR Linn Operating, Inc.

170 N feet from south/north line of section

LEASE Edwards

659 E feet from east / west line of section

WELL NUMBER A-5 ATU-449

FIELD Hugoton-Panoma

SECTION 33 TWP 29S (S) RG 39W E/W

IS SECTION X REGULAR or \_\_\_\_\_ IRREGULAR

IF SECTION IS IRREGULAR, LOCATE WELL FROM

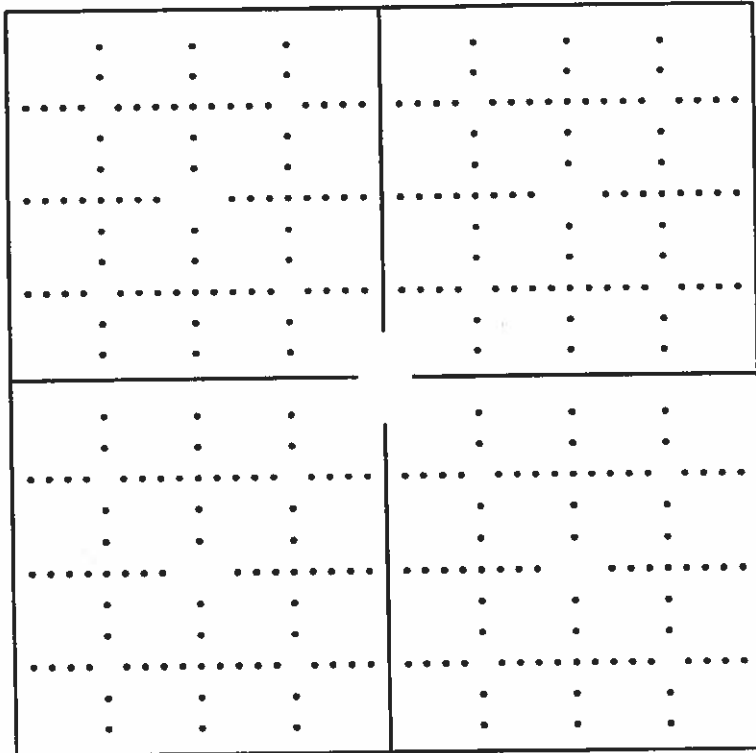
NEAREST CORNER BOUNDARY. (check line below)

Section corner used: NE NW SE SW

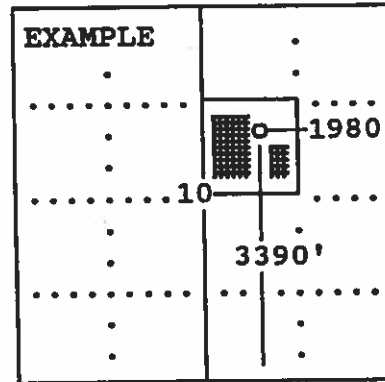
NUMBER OF ACRES ATTRIBUTABLE TO WELL 640

QTR/QTR/QTR OF ACREAGE NE - NE - NE

(Show the location of the well and shade attributable acreage for prorated or spaced wells).  
 (Show the footage to the nearest lease or unit boundary line; and show footage to the nearest common source supply well).



*See Attached map*



SEWARD CO.

The undersigned hereby certifies as Regulatory Compliance Advisor (title) for Linn Operating, Inc. (Co.), a duly authorized agent, that all

information shown hereon is true and correct to the best of my knowledge and belief, that all acreage claimed attributable to the well named herein is held by production from that well and hereby make application for an allowable to be assigned to the well upon the filing of this form and the State test, whichever is later.

Signature *Shawn Hedrick*

Subscribed and sworn to before me on this 13th day of October, 19 2014

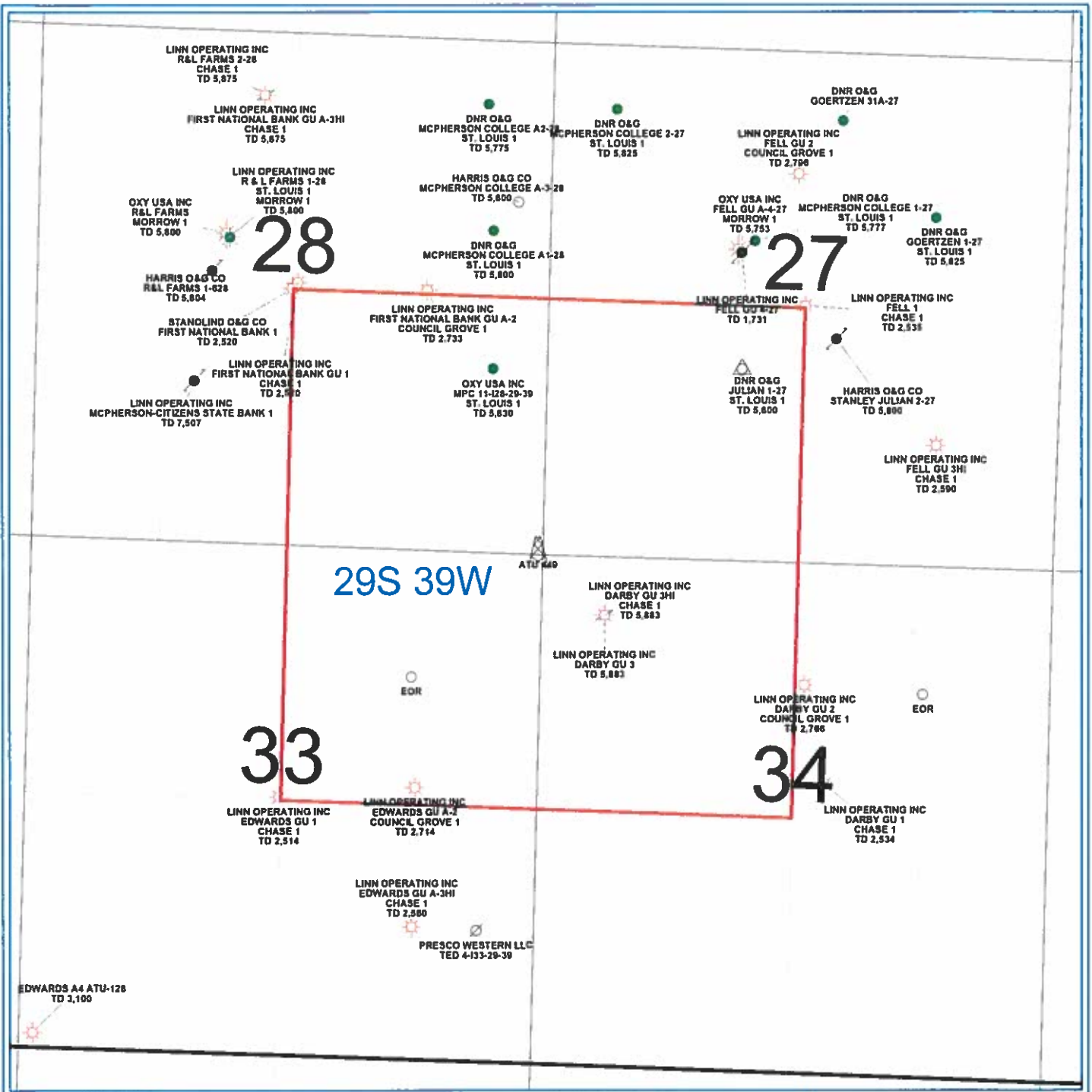
*Jared E. Dancer*

Notary Public

*8-26-2018*

FORM CG-8 (12/94)





PETRA 10/28/2013 12:53:23 PM

Linn Operating Inc	
Hugoton Kansas	
ATU 449	
Stanton Co. 29S - 39W	
<b>WELL SYMBOLS</b> ABANDONED LOCATION Abandoned Well ATU Well Location Gas Well Oil and Gas Well Oil Well Plugged and Abandoned Service Well Suspended Gas Well LOCATION	