



1000 LedgeLawn Drive
 Conway, Arkansas 72034
 501.328.3316 f 501.328.3325 f
 www.craftontull.com

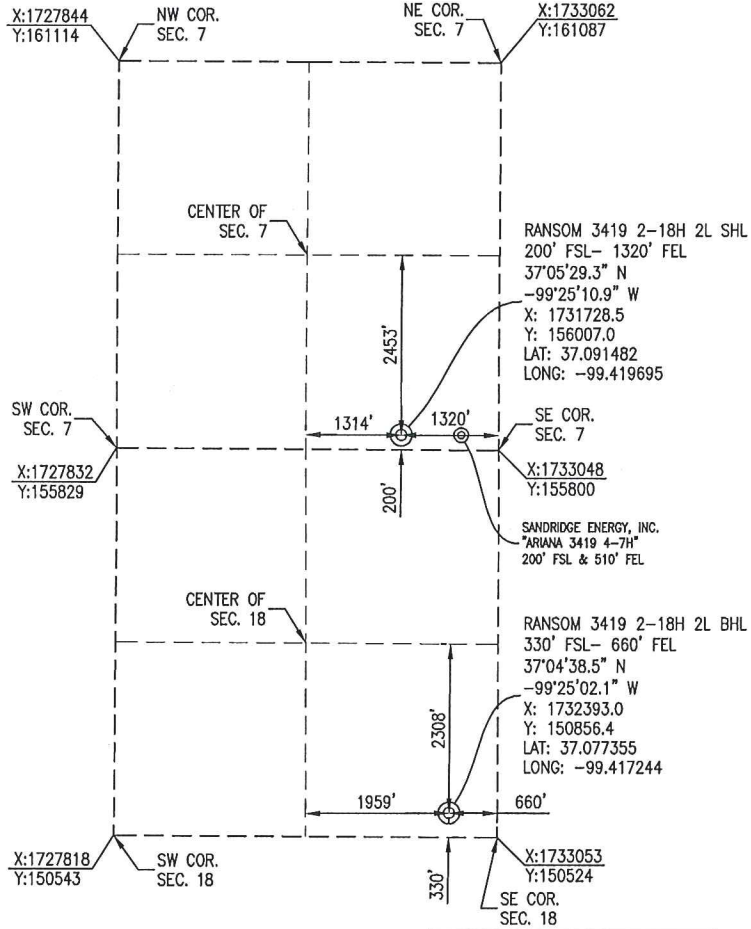
Crafton Tull
 SURVEYING

COMANCHE COUNTY, KANSAS

200' FSL- 1320' FEL SECTION 7 TOWNSHIP 34S RANGE 19W 6TH P.M.



BOTTOM HOLE INFORMATION PROVIDED BY OPERATOR LISTED AND CORNER COORDINATES ARE TAKEN FROM POINTS SURVEYED IN THE FIELD.



ELEVATION:
 1793' GR. AT STAKE

OPERATOR: SANDRIDGE ENERGY, INC.

WELL NO: 2-18H 2L

LEASE NAME: RANSOM3419

TOPOGRAPHIC & VEGETATION: LOCATION FELL IN A FIELD

GOOD DRILL SITE: YES REFERENCE STAKES OR ALTERNATE LOCATION STAKES SET: NONE

BEST ACCESSIBILITY TO LOCATION: SOUTH LINE

DISTANCE & DIRECTION

FROM HWY JCT OR TOWN: FROM THE JCT. OF US-160 & ROAD 5 (AT PROTECTION, KS) TRAVEL SOUTH ON ROAD 5 FOR ±7.0 MILES, TURN LEFT (EAST) ON AVENUE U & TRAVEL ±3.0 MILES TO THE SOUTHEAST CORNER OF SECTION 7, T34S-R19W.

(THE FOLLOWING INFORMATION WAS GATHERED USING A GPS RECEIVER ACCURACY ±2-3 METERS)

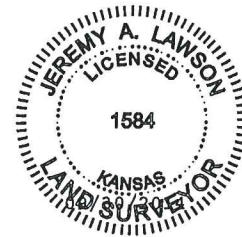
GPS DATUM: NAD-27
 LAT: 37.091482
 LONG: -99.419695

STATE PLANE COORDINATES:
 ZONE: KS-SOUTH NAD-27
 X: 1731728.5
 Y: 156007.0

DATE STAKED: 9-30-2014

GENERAL NOTES:

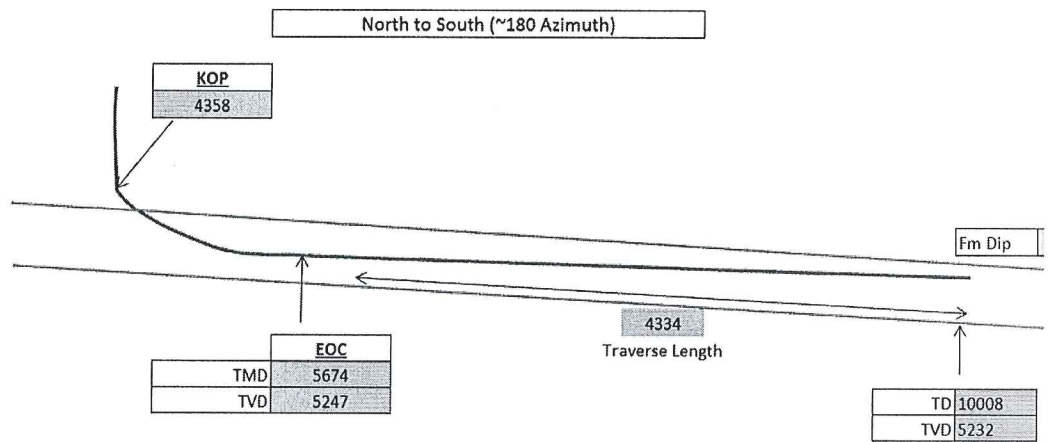
THE TIES AND FOOTAGES SHOWN ON THIS PLAT ARE FROM LINES OF OCCUPATION FROM A SURVEY MADE ON THE GROUND AND / OR BEARING AND DISTANCES FROM THE GENERAL LAND OFFICE PLAT OF THE AREA SHOWN AND MAY NOT BE THE ACTUAL PROPERTY CORNERS. THIS PLAT DOES NOT REPRESENT A TRUE BOUNDARY SURVEY. DRILL SITE CONDITION DETERMINATIONS WERE MADE BY SANDRIDGE ENERGY INC. REPRESENTATIVES.

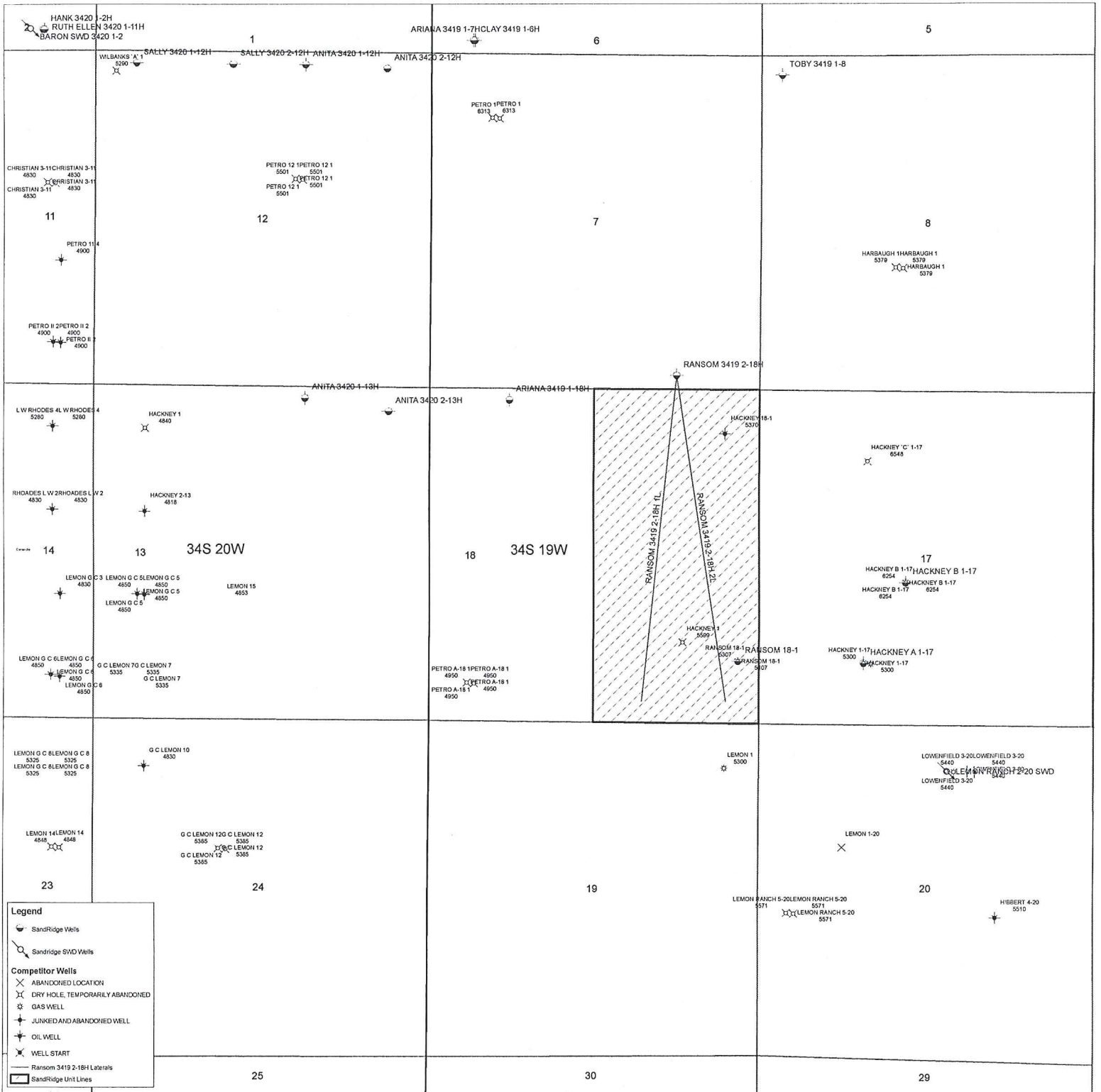


REVISION		SandRidge
▲	MOVED SHL & ADDED BHL (9-30-2014)	
		"RANSOM 3419 2-18H 2L" PART OF THE SE1/4 OF SECTION 7, T-34-S, R-19-W PROPOSED DRILL SITE COMANCHE COUNTY, KANSAS
SCALE: 1" = 2000'		DRAWN BY: MF SHEET NO.: 1 OF 4
PLOT DATE: 09-30-2014		

Footages	
FNL	-200
FSL	330
Total VS	5,150.00
EOC (MD)	5,673.82
EOC (TVD)	5,247.15
KOP	4,357.54
Traverse Length	4,334.15
TD (MD)	10,007.97
TVD @ TD	5,232.02
TVD displacement f/ EOC to TD	15.13

Operator
SandRidge Energy
Well Name and Number
Ransom 3419 2-18H 2L
Well Surface Location
7-T34S-R19W; 200' fsl & 1320' fel
Well Bottom Hole Location
18-T34S-R19W; 330' fsl & 330' fel
County and State
Comanche County, Kansas





Legend

- SandRidge Wells
- SandRidge SVD Wells
- Competitor Wells**
- ABANDONED LOCATION
- DRY HOLE, TEMPORARILY ABANDONED
- GAS WELL
- JUNKED AND ABANDONED WELL
- OIL WELL
- WELL START
- Ransom 3419 2-18H Laterals
- SandRidge Unit Lines

Ransom 3419 2-18H 1Land 2L
Lease Information Sheet

Unit Description:

E/2 of 18-34S-19W

Comanche County

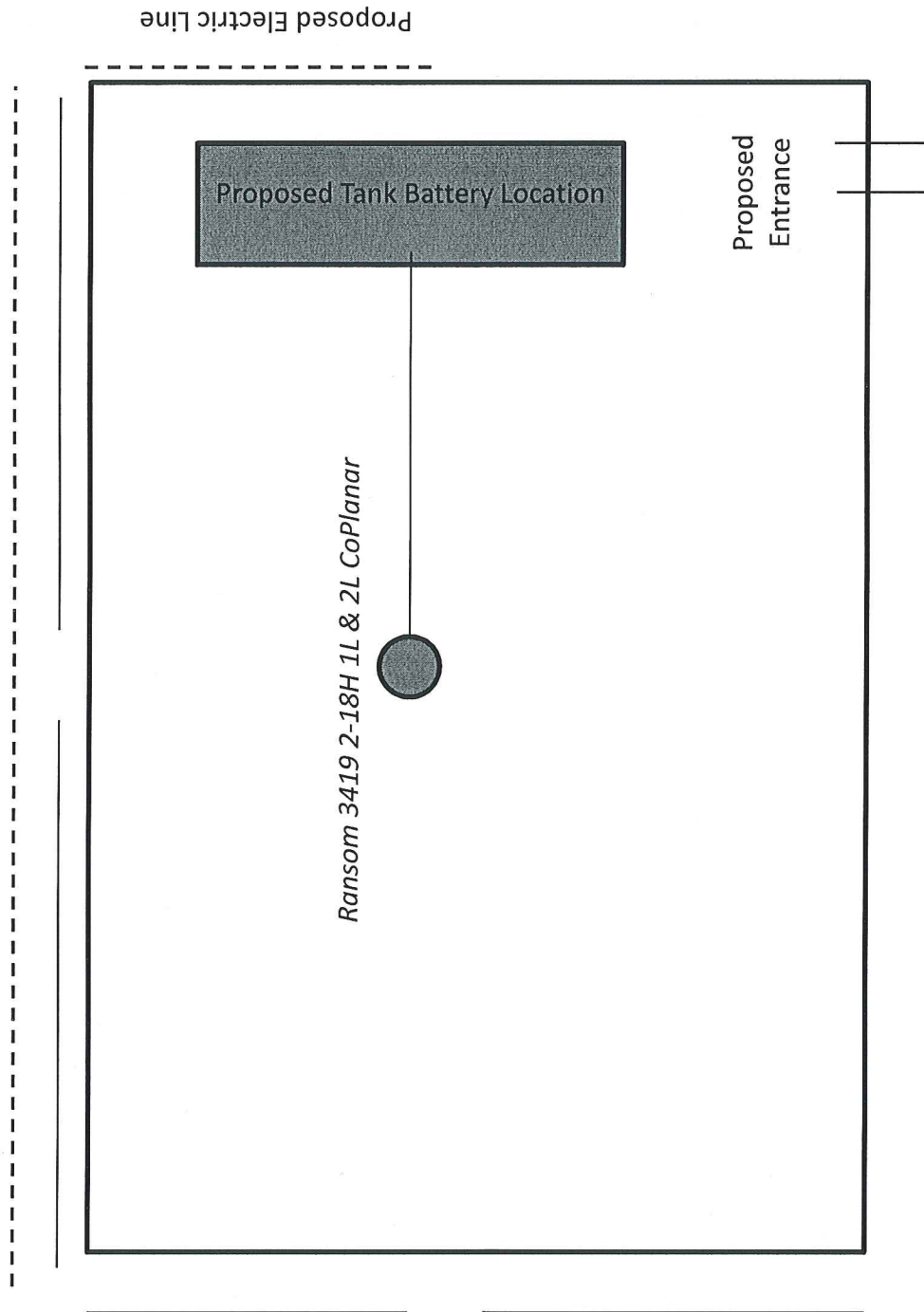
Surface Owner:

Kenyon R. Baker and Julia R. Baker, h&w

597 Rd 5

Protection, KS 67172

Ransom 3419 2-18H 1L and 2L CoPlanar



This plat is proposed information only and is not meant to be the final location of facilities or wells. Please refer to the Kansas Survey Plat for that information.