



## DRILL STEM TEST REPORT

Prepared For: **American Warrior, Inc**

PO Box 399  
Garden City, KS 67846

ATTN: Jason Alm

### **Fritz #1-29**

#### **29-18s-21w Ness,KS**

Start Date: 2014.06.02 @ 10:32:00

End Date: 2014.06.02 @ 17:17:00

Job Ticket #: 58899                      DST #: 1

Trilobite Testing, Inc  
PO Box 362 Hays, KS 67601  
ph: 785-625-4778 fax: 785-625-5620

Printed: 2014.06.04 @ 13:59:17



**TRILOBITE TESTING, INC**

# DRILL STEM TEST REPORT

American Warrior, Inc  
 PO Box 399  
 Garden City, KS 67846  
 ATTN: Jason Alm

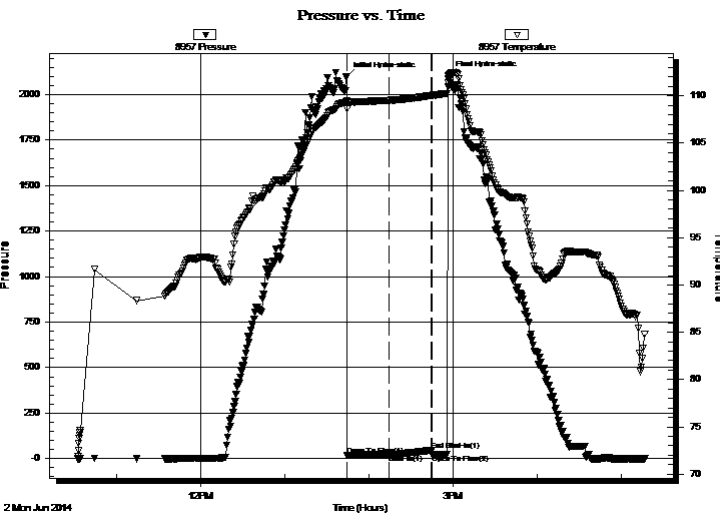
**29-18s-21w Ness, KS**  
**Fritz #1-29**  
 Job Ticket: 58899 **DST#: 1**  
 Test Start: 2014.06.02 @ 10:32:00

## GENERAL INFORMATION:

Formation: **Cherokee "A" Sand**  
 Deviated: No Whipstock: ft (KB)  
 Time Tool Opened: 13:44:45  
 Time Test Ended: 17:17:00  
 Interval: **4125.00 ft (KB) To 4166.00 ft (KB) (TVD)**  
 Total Depth: 4166.00 ft (KB) (TVD)  
 Hole Diameter: 7.88 inches Hole Condition: Fair  
 Test Type: Conventional Bottom Hole (Initial)  
 Tester: Phillip Gage  
 Unit No: 59  
 Reference Elevations: 2120.00 ft (KB)  
 2114.00 ft (CF)  
 KB to GR/CF: 6.00 ft

**Serial #: 8957 Outside**  
 Press@RunDepth: 21.45 psig @ 4131.00 ft (KB) Capacity: 8000.00 psig  
 Start Date: 2014.06.02 End Date: 2014.06.02 Last Calib.: 2014.06.02  
 Start Time: 10:32:05 End Time: 17:16:59 Time On Btm: 2014.06.02 @ 13:44:30  
 Time Off Btm: 2014.06.02 @ 14:57:00

**TEST COMMENT:** 30-IF-Weak Surface Blow , Died after 20 mins  
 30-ISI-No Return.  
 10-FF-No Blow , pulled tool after 10 mins.  
 0-FSI-N/A



## PRESSURE SUMMARY

Time (Min.)	Pressure (psig)	Temp (deg F)	Annotation
0	2100.34	109.43	Initial Hydro-static
1	18.20	108.67	Open To Flow (1)
31	21.45	109.53	Shut-In(1)
61	46.11	110.05	End Shut-In(1)
61	20.44	110.03	Open To Flow (2)
73	2102.32	111.83	Final Hydro-static

## Recovery

Length (ft)	Description	Volume (bbl)
5.00	VSOCM, 1%o, 99%m	0.02

## Gas Rates

	Choke (inches)	Pressure (psig)	Gas Rate (Mcf/d)





**TRILOBITE  
TESTING, INC**

# DRILL STEM TEST REPORT

**TOOL DIAGRAM**

American Warrior, Inc  
PO Box 399  
Garden City, KS 67846  
ATTN: Jason Alm

**29-18s-21w Ness, KS**  
**Fritz #1-29**  
Job Ticket: 58899      **DST#: 1**  
Test Start: 2014.06.02 @ 10:32:00

**Tool Information**

Drill Pipe:	Length: 3992.00 ft	Diameter: 3.80 inches	Volume: 56.00 bbl	Tool Weight:	2500.00 lb
Heavy Wt. Pipe:	Length: 0.00 ft	Diameter: 2.75 inches	Volume: 0.00 bbl	Weight set on Packer:	25000.00 lb
Drill Collar:	Length: 120.00 ft	Diameter: 2.25 inches	Volume: 0.59 bbl	Weight to Pull Loose:	70000.00 lb
			<u>Total Volume: 56.59 bbl</u>	Tool Chased	0.00 ft
Drill Pipe Above KB:	15.00 ft			String Weight: Initial	60000.00 lb
Depth to Top Packer:	4125.00 ft			Final	60000.00 lb
Depth to Bottom Packer:	ft				
Interval between Packers:	41.00 ft				
Tool Length:	69.00 ft				
Number of Packers:	2	Diameter: 6.75 inches			

Tool Comments:

<b>Tool Description</b>	<b>Length (ft)</b>	<b>Serial No.</b>	<b>Position</b>	<b>Depth (ft)</b>	<b>Accum. Lengths</b>
-------------------------	--------------------	-------------------	-----------------	-------------------	-----------------------

Shut In Tool	5.00			4102.00	
Hydraulic tool	5.00			4107.00	
Jars	5.00		Fluid	4112.00	
Safety Joint	3.00			4115.00	
Packer	5.00			4120.00	28.00      Bottom Of Top Packer
Packer	5.00			4125.00	
Stubb	1.00		Inside	4126.00	
Perforations	4.00			4130.00	
Change Over Sub	1.00			4131.00	
Recorder	0.00	8934	Inside	4131.00	
Recorder	0.00	8957	Outside	4131.00	
Drill Pipe	31.00			4162.00	
Change Over Sub	1.00			4163.00	
Bullnose	3.00			4166.00	41.00      Bottom Packers & Anchor

**Total Tool Length: 69.00**



**TRILOBITE  
TESTING, INC**

# DRILL STEM TEST REPORT

**FLUID SUMMARY**

American Warrior, Inc

**29-18s-21w Ness,KS**

PO Box 399  
Garden City, KS 67846

**Fritz #1-29**

Job Ticket: 58899

**DST#: 1**

ATTN: Jason Alm

Test Start: 2014.06.02 @ 10:32:00

## Mud and Cushion Information

Mud Type: Gel Chem

Cushion Type:

Oil API:

deg API

Mud Weight: 9.00 lb/gal

Cushion Length:

ft

Water Salinity:

ppm

Viscosity: 50.00 sec/qt

Cushion Volume:

bbbl

Water Loss: 11.17 in<sup>3</sup>

Gas Cushion Type:

Resistivity: ohm.m

Gas Cushion Pressure:

psig

Salinity: 8300.00 ppm

Filter Cake: inches

## Recovery Information

Recovery Table

Length ft	Description	Volume bbl
5.00	VSOCM, 1%o, 99%m	0.025

Total Length: 5.00 ft      Total Volume: 0.025 bbl

Num Fluid Samples: 0

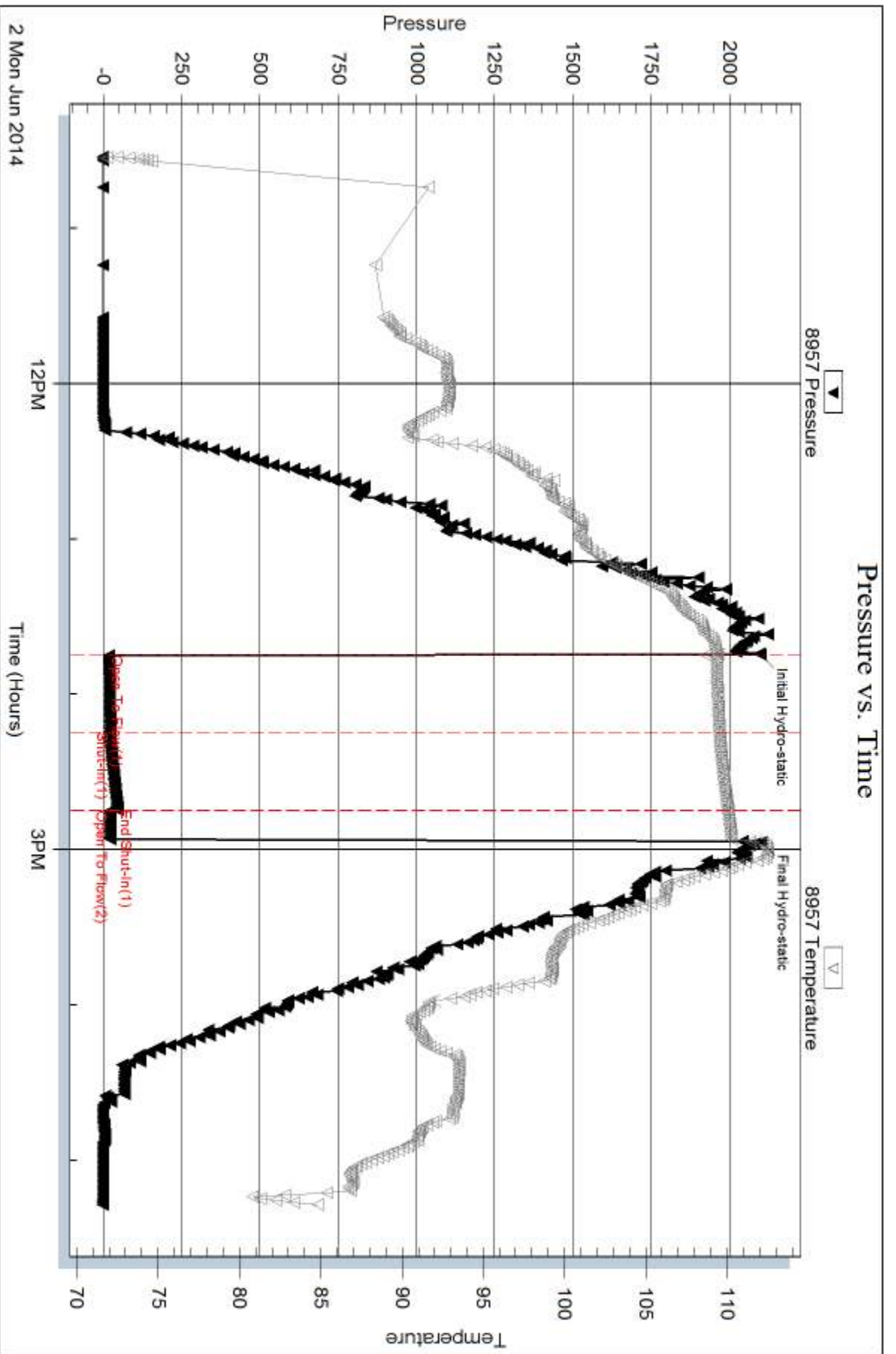
Num Gas Bombs: 0

Serial #:

Laboratory Name:

Laboratory Location:

Recovery Comments:



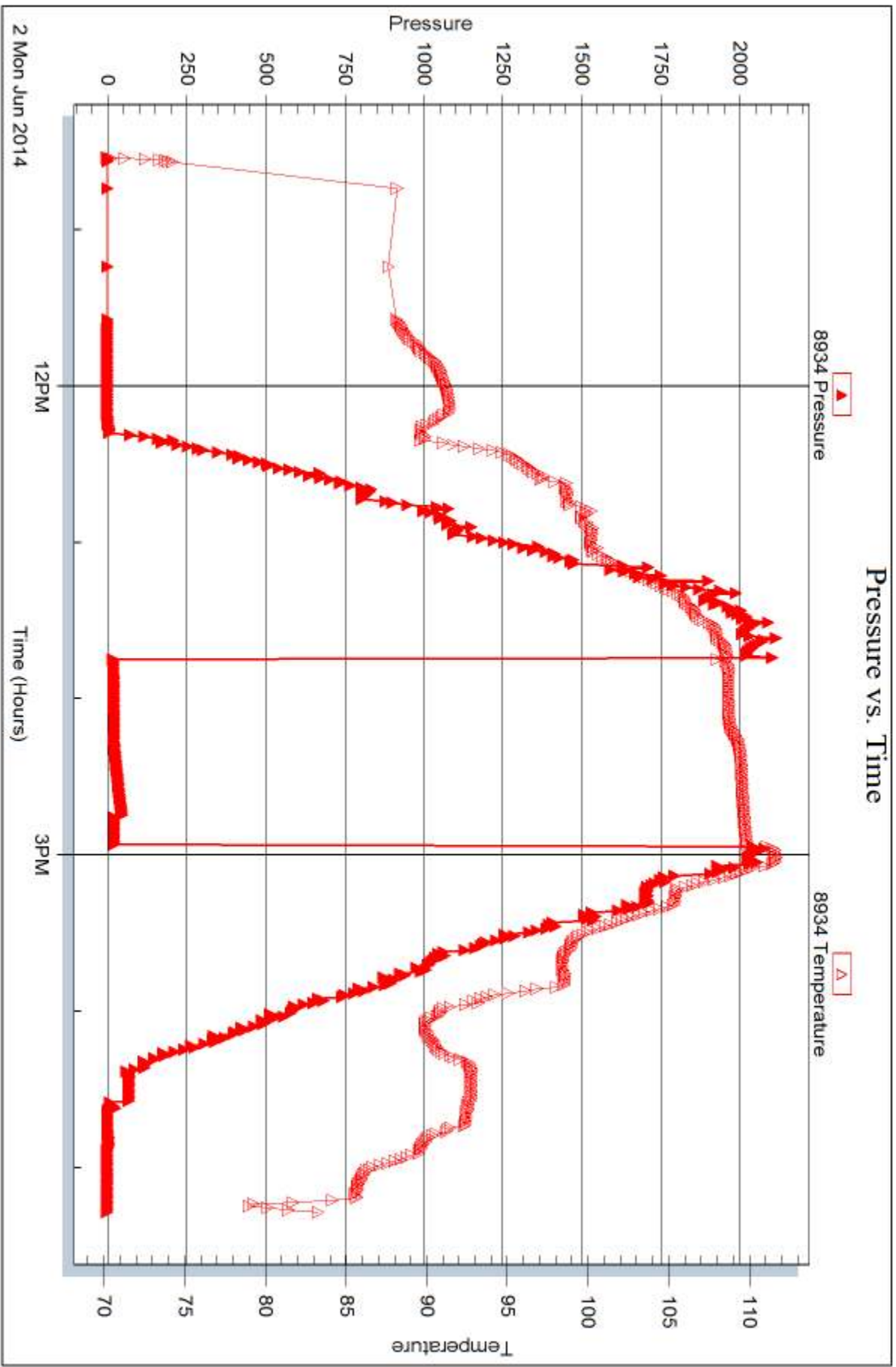
Serial #: 8934

Inside

American Warrior, Inc

Fritz #1-29

DST Test Number: 1



Trilobite Testing, Inc

Ref. No: 58899

Printed: 2014.06.04 @ 13:59:18



## DRILL STEM TEST REPORT

Prepared For: **American Warrior, Inc**

PO Box 399  
Garden City, KS 67846

ATTN: Jason Alm

### **Fritz #1-29**

#### **29-18s-21w Ness,KS**

Start Date: 2014.06.03 @ 02:56:00

End Date: 2014.06.03 @ 10:54:15

Job Ticket #: 58900                      DST #: 2

Trilobite Testing, Inc  
PO Box 362 Hays, KS 67601  
ph: 785-625-4778 fax: 785-625-5620

Printed: 2014.06.04 @ 13:58:06

American Warrior, Inc  
29-18s-21w Ness,KS  
Fritz #1-29  
DST # 2  
Miss.  
2014.06.03





**TRILOBITE  
TESTING, INC.**

# DRILL STEM TEST REPORT

American Warrior, Inc  
 PO Box 399  
 Garden City, KS 67846  
 ATTN: Jason Alm

**29-18s-21w Ness, KS**

**Fritz #1-29**

Job Ticket: 58900

**DST#: 2**

Test Start: 2014.06.03 @ 02:56:00

## GENERAL INFORMATION:

Formation: **Miss.**  
 Deviated: No Whipstock: ft (KB)  
 Time Tool Opened: 07:04:00  
 Time Test Ended: 10:54:15  
 Interval: **4210.00 ft (KB) To 4219.00 ft (KB) (TVD)**  
 Total Depth: 4219.00 ft (KB) (TVD)  
 Hole Diameter: 7.88 inches Hole Condition: Fair  
 Test Type: Conventional Bottom Hole (Reset)  
 Tester: Phillip Gage  
 Unit No: 59  
 Reference Elevations: 2120.00 ft (KB)  
 2114.00 ft (CF)  
 KB to GR/CF: 6.00 ft

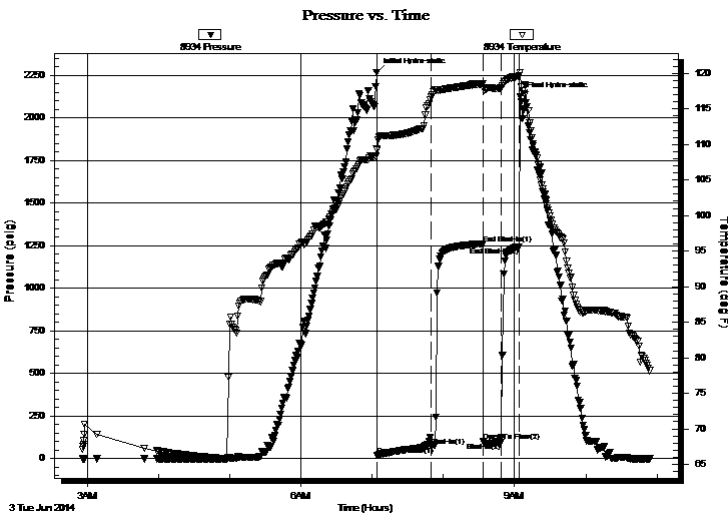
**Serial #: 8934**

**Inside**

Press@RunDepth: 94.25 psig @ 4211.00 ft (KB) Capacity: 8000.00 psig  
 Start Date: 2014.06.03 End Date: 2014.06.03 Last Calib.: 2014.06.03  
 Start Time: 02:56:05 End Time: 10:54:14 Time On Btm: 2014.06.03 @ 07:03:45  
 Time Off Btm: 2014.06.03 @ 09:04:45

TEST COMMENT: 45-IF-BOB in 39 mins.  
 45-ISI-Surface Blow, died in 24 mins.  
 15-FF-Built to 4 1/4"  
 15-FSI-1/4" Return.

## PRESSURE SUMMARY



Time (Min.)	Pressure (psig)	Temp (deg F)	Annotation
0	2267.41	109.33	Initial Hydro-static
1	18.17	109.19	Open To Flow (1)
46	72.56	116.66	Shut-In(1)
90	1261.44	118.53	End Shut-In(1)
90	101.16	117.95	Open To Flow (2)
105	94.25	117.94	Shut-In(2)
121	1244.78	119.70	End Shut-In(2)
121	2124.15	120.12	Final Hydro-static

## Recovery

Length (ft)	Description	Volume (bbl)
120.00	VSWGOCM, 5%w, 10%g, 10%o, 75%m	0.59
63.00	VSMOCG, 5%m, 40%o, 55%g	0.88
15.00	GCO, 20%g, 80%o	0.21
0.00	GIP, 171'	0.00

\* Recovery from multiple tests

## Gas Rates

	Choke (inches)	Pressure (psig)	Gas Rate (Mcf/d)





**TRILOBITE  
TESTING, INC**

# DRILL STEM TEST REPORT

**TOOL DIAGRAM**

American Warrior, Inc  
PO Box 399  
Garden City, KS 67846  
ATTN: Jason Alm

**29-18s-21w Ness, KS**  
**Fritz #1-29**  
Job Ticket: 58900      **DST#: 2**  
Test Start: 2014.06.03 @ 02:56:00

**Tool Information**

Drill Pipe:	Length: 4090.00 ft	Diameter: 3.80 inches	Volume: 57.37 bbl	Tool Weight: 2500.00 lb
Heavy Wt. Pipe:	Length: 0.00 ft	Diameter: 2.75 inches	Volume: 0.00 bbl	Weight set on Packer: 25000.00 lb
Drill Collar:	Length: 120.00 ft	Diameter: 2.25 inches	Volume: 0.59 bbl	Weight to Pull Loose: 70000.00 lb
		Total Volume: 57.96 bbl		Tool Chased 0.00 ft
Drill Pipe Above KB:	28.00 ft			String Weight: Initial 56000.00 lb
Depth to Top Packer:	4210.00 ft			Final 58000.00 lb
Depth to Bottom Packer:	ft			
Interval between Packers:	9.00 ft			
Tool Length:	37.00 ft			
Number of Packers:	2	Diameter: 6.75 inches		

Tool Comments:

Tool Description	Length (ft)	Serial No.	Position	Depth (ft)	Accum. Lengths
------------------	-------------	------------	----------	------------	----------------

Shut In Tool	5.00			4187.00	
Hydraulic tool	5.00			4192.00	
Jars	5.00		Fluid	4197.00	
Safety Joint	3.00			4200.00	
Packer	5.00			4205.00	28.00      Bottom Of Top Packer
Packer	5.00			4210.00	
Stubb	1.00		Inside	4211.00	
Recorder	0.00	8934	Inside	4211.00	
Recorder	0.00	8736	Outside	4211.00	
Perforations	5.00			4216.00	
Bullnose	3.00			4219.00	9.00      Bottom Packers & Anchor

**Total Tool Length: 37.00**



**TRILOBITE  
TESTING, INC**

# DRILL STEM TEST REPORT

**FLUID SUMMARY**

American Warrior, Inc  
 PO Box 399  
 Garden City, KS 67846  
 ATTN: Jason Alm

**29-18s-21w Ness,KS**  
**Fritz #1-29**  
 Job Ticket: 58900      **DST#: 2**  
 Test Start: 2014.06.03 @ 02:56:00

## Mud and Cushion Information

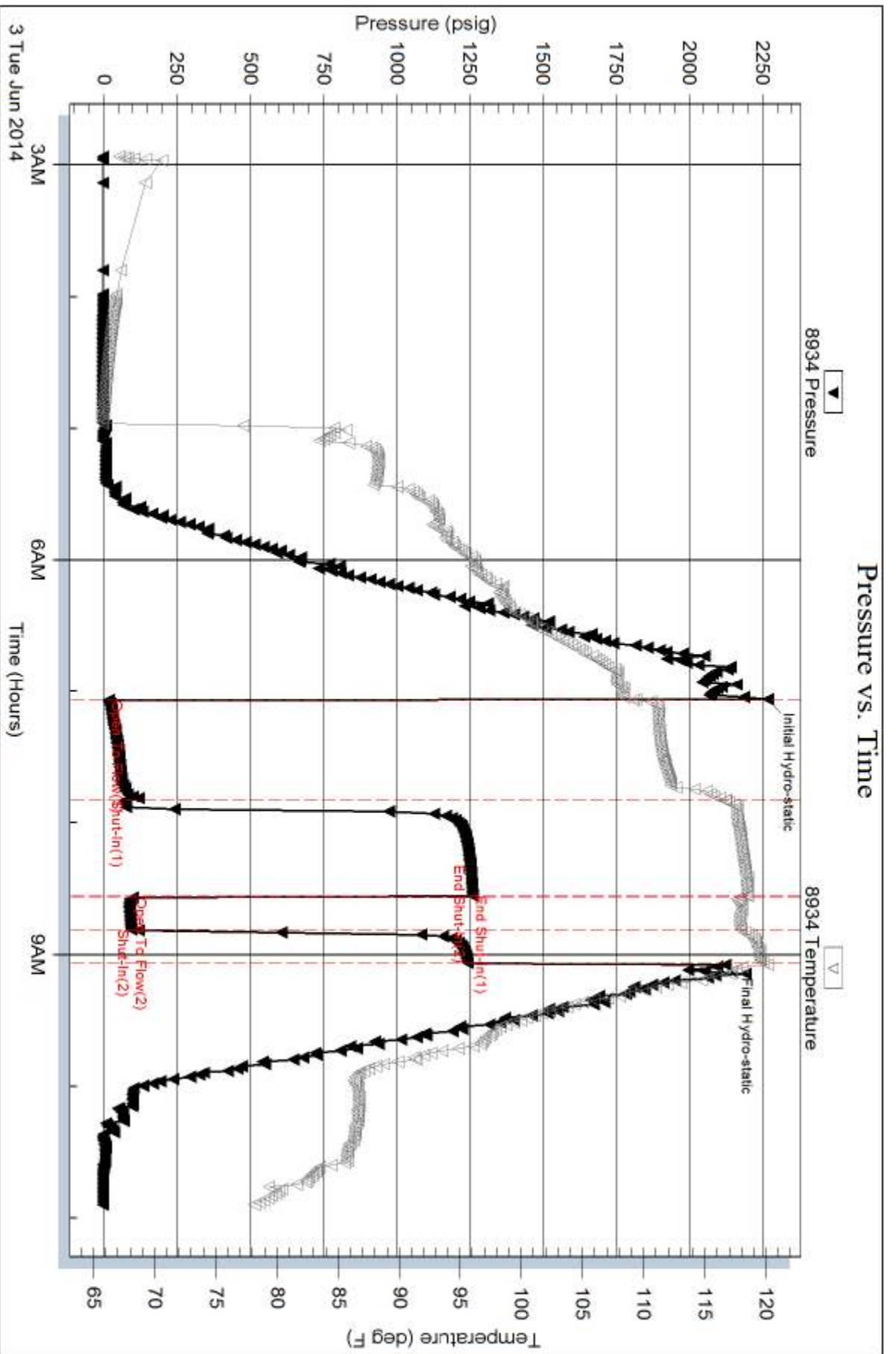
Mud Type: Gel Chem	Cushion Type:	Oil API: 39 deg API
Mud Weight: 9.00 lb/gal	Cushion Length: ft	Water Salinity: ppm
Viscosity: 50.00 sec/qt	Cushion Volume: bbl	
Water Loss: 11.18 in <sup>3</sup>	Gas Cushion Type:	
Resistivity: ohm.m	Gas Cushion Pressure: psig	
Salinity: 8300.00 ppm		
Filter Cake: inches		

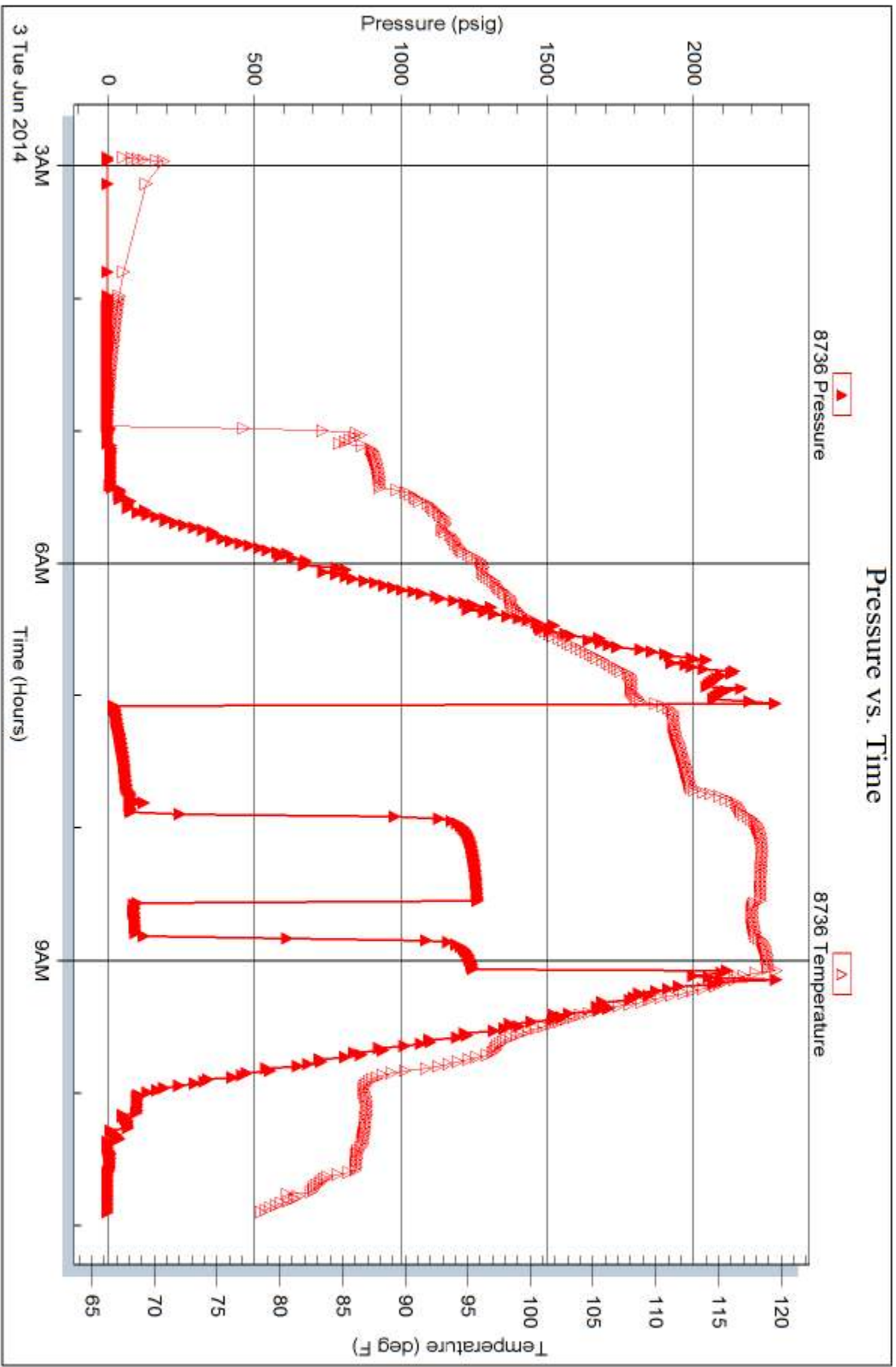
## Recovery Information

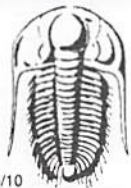
Recovery Table

Length ft	Description	Volume bbl
120.00	VSWGOCM, 5%w, 10%g, 10%o, 75%m	0.590
63.00	VSMOCG, 5%m, 40%o, 55%g	0.884
15.00	GCO, 20%g, 80%o	0.210
0.00	GIP, 171'	0.000

Total Length: 198.00 ft      Total Volume: 1.684 bbl  
 Num Fluid Samples: 0      Num Gas Bombs: 0      Serial #:  
 Laboratory Name:      Laboratory Location:  
 Recovery Comments:







# TRILOBITE TESTING INC.

1515 Commerce Parkway • Hays, Kansas 67601

## Test Ticket

NO. 58899

Well Name & No. Fritz #1-29 Test No. 1 Date 6-2-14  
 Company American Warrior, Inc Elevation 2120 KB 2114 GL  
 Address 3118 Cammings RD P.O. Box 399 Garden City, KS 67846  
 Co. Rep / Geo. Jason Alm Rig Petro mark 1 ~~67846~~  
 Location: Sec. 39 Twp. 18s Rge. 21w Co. Ness State KS

Interval Tested 4125 - 4166 Zone Tested Cherokee "A" Sand  
 Anchor Length 41' Drill Pipe Run 3992 Mud Wt. 9.2  
 Top Packer Depth 4120 Drill Collars Run 120 Vis 50  
 Bottom Packer Depth 4125 Wt. Pipe Run 0 WL 11.2  
 Total Depth 4166 Chlorides 8,300 ppm System LCM Tr

Blow Description IF - Weak Surface Blow, died in 20min  
ISI - No Return  
FF - No Blow, pulled tool after 10min  
FSI N/A

Rec	Feet of	%gas	%oil	%water	%mud
<u>5'</u>	<u>150CM</u>		<u>1</u>		<u>99</u>
Rec	Feet of	%gas	%oil	%water	%mud
Rec	Feet of	%gas	%oil	%water	%mud
Rec	Feet of	%gas	%oil	%water	%mud
Rec	Feet of	%gas	%oil	%water	%mud

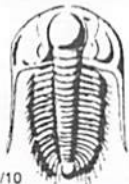
Rec Total 5' BHT 111 Gravity — API RW — °F Chlorides — ppm

(A) Initial Hydrostatic 2100  Test 1250 T-On Location 10:19  
 (B) First Initial Flow 18  Jars 250 T-Started 10:32  
 (C) First Final Flow 21  Safety Joint 75 T-Open 13:45  
 (D) Initial Shut-In 46  Circ Sub \_\_\_\_\_ T-Pulled 14:55  
 (E) Second Initial Flow 20  Hourly Standby \_\_\_\_\_ T-Out 17:18  
 (F) Second Final Flow N/A  Mileage 139 RT 100 155 Comments \_\_\_\_\_  
 (G) Final Shut-In N/A  Sampler \_\_\_\_\_  
 (H) Final Hydrostatic 2102  Straddle \_\_\_\_\_  Ruined Shale Packer \_\_\_\_\_

Initial Open \_\_\_\_\_  Shale Packer \_\_\_\_\_  Ruined Packer \_\_\_\_\_  
 Initial Shut-In \_\_\_\_\_  Extra Packer \_\_\_\_\_  Extra Copies \_\_\_\_\_  
 Final Flow \_\_\_\_\_  Extra Recorder \_\_\_\_\_ Sub Total 0  
 Final Shut-In \_\_\_\_\_  Day Standby \_\_\_\_\_ Total 1730  
 Accessibility \_\_\_\_\_ MP/DST Disc't \_\_\_\_\_  
 Sub Total 1730

Approved By \_\_\_\_\_ Our Representative Wally Lee Thank You

Trilobite Testing Inc. shall not be liable for damaged of any kind of the property or personnel of the one for whom a test is made, or for any loss suffered or sustained, directly or indirectly, through the use of its equipment, or its statements or opinion concerning the results of any test, tools lost or damaged in the hole shall be paid for at cost by the party for whom the test is made.



# TRILOBITE TESTING INC.

1515 Commerce Parkway • Hays, Kansas 67601

## Test Ticket

NO. 58900

Well Name & No. Fritz # 1-29 Test No. 2 Date 6-3-14  
 Company American Warrior, Inc Elevation 2120 KB 2114 GL  
 Address 3118 Cummings Rd, P.O. Box 399 Garden City, KS 67846  
 Co. Rep / Geo. Jason Alm Rig Petro-mark 1  
 Location: Sec. 29 Twp. 18s Rge. 21w Co. Ness State KS

Interval Tested 4210 - 4219 Zone Tested Miss  
 Anchor Length 9' Drill Pipe Run 4090 Mud Wt. 9.2  
 Top Packer Depth 4205 Drill Collars Run 120 Vis 50  
 Bottom Packer Depth 4210 Wt. Pipe Run 0 WL 11.2  
 Total Depth 4219 Chlorides 8,300 ppm System LCM TV

Blow Description FF - BOB in 39  
ISI - Surface blow, died in 24 min.  
FF - Buick + 0 4 1/4"  
FSI - 1/4" Return,

Rec	Feet of	%gas	%oil	%water	%mud
<u>120'</u>	<u>USWBOCM</u>	<u>10</u>	<u>10</u>	<u>5</u>	<u>75</u>
<u>63'</u>	<u>USMOCC</u>	<u>55</u>	<u>40</u>	<u></u>	<u>5</u>
<u>15'</u>	<u>GLO</u>	<u>20</u>	<u>80</u>	<u></u>	<u></u>
<u>0</u>	<u>GIP 171'</u>	<u>100</u>	<u></u>	<u></u>	<u></u>
		<u>%gas</u>	<u>%oil</u>	<u>%water</u>	<u>%mud</u>

Rec Total 198 BHT 120 Gravity 39 API RW @ °F Chlorides  ppm

(A) Initial Hydrostatic 2267  Test 1250 T-On Location 02:51  
 (B) First Initial Flow 18  Jars 250 T-Started 02:56  
 (C) First Final Flow 72  Safety Joint 75 T-Open 07:04  
 (D) Initial Shut-In 1261  Circ Sub  T-Pulled 09:04  
 (E) Second Initial Flow 101  Hourly Standby  T-Out 10:55  
 (F) Second Final Flow 94  Mileage 100 RT 155 Comments   
 (G) Final Shut-In 1244  Sampler   
 (H) Final Hydrostatic 2124  Straddle   Ruined Shale Packer   
 Shale Packer   Ruined Packer   
 Extra Packer   Extra Copies   
 Extra Recorder

Initial Open 45  
 Initial Shut-In 45  
 Final Flow 15  
 Final Shut-In 15  
 Sub Total 1730  
 Total 1730  
 MP/DST Disc't

Approved By \_\_\_\_\_ Our Representative Phillip Gray Thank You.  
 Trilobite Testing Inc. shall not be liable for damaged of any kind of the property or personnel of the one for whom a test is made, or for any loss suffered or sustained, directly or indirectly, through the use of its equipment, or its statements or opinion concerning the results of any test, tools lost or damaged in the hole shall be paid for at cost by the party for whom the test is made.