



DRILL STEM TEST REPORT

Prepared For: **American Warrior Inc**

3118 Cummings Rd
Garden City, KS 67846

ATTN: Kevin Timson

Blaesi #6-6

6-15s-41w Wallace,KS

Start Date: 2014.09.29 @ 16:02:48

End Date: 2014.09.29 @ 21:42:48

Job Ticket #: 59040 DST #: 1

Trilobite Testing, Inc
1515 Commerce Parkway Hays, KS 67601
ph: 785-625-4778 fax: 785-625-5620

Printed: 2014.10.03 @ 09:17:48



TRILOBITE TESTING, INC

DRILL STEM TEST REPORT

American Warrior Inc
 3118 Cummings Rd
 Garden City, KS 67846
 ATTN: Kevin Timson

6-15s-41w Wallace, KS

Blaesi #6-6

Job Ticket: 59040 **DST#: 1**
 Test Start: 2014.09.29 @ 16:02:48

GENERAL INFORMATION:

Formation: **Morrow**
 Deviated: No Whipstock: ft (KB)
 Time Tool Opened: 18:06:18
 Time Test Ended: 21:42:48
 Interval: **4930.00 ft (KB) To 5010.00 ft (KB) (TVD)**
 Total Depth: 5010.00 ft (KB) (TVD)
 Hole Diameter: 7.88 inches Hole Condition: Good
 Test Type: Conventional Bottom Hole (Initial)
 Tester: Brandon Turley
 Unit No: 60
 Reference Elevations: 3795.00 ft (KB)
 3785.00 ft (CF)
 KB to GR/CF: 10.00 ft

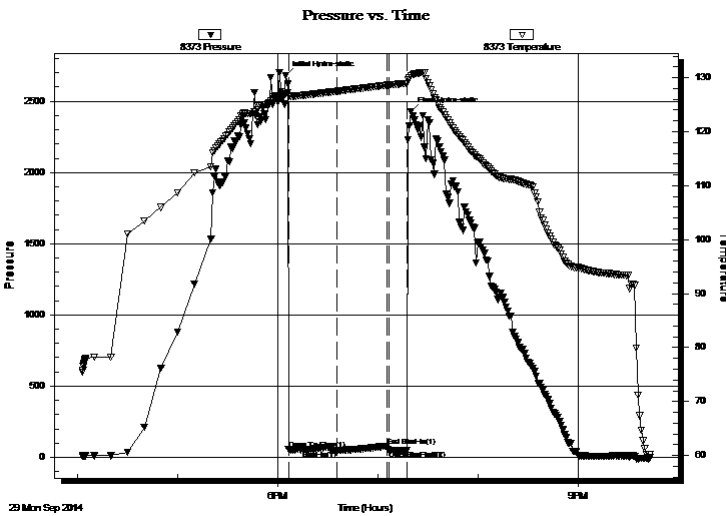
Serial #: 8373

Inside

Press@RunDepth: 49.67 psig @ 4931.00 ft (KB) Capacity: 8000.00 psig
 Start Date: 2014.09.29 End Date: 2014.09.29 Last Calib.: 2014.09.29
 Start Time: 16:02:53 End Time: 21:42:47 Time On Btm: 2014.09.29 @ 18:04:48
 Time Off Btm: 2014.09.29 @ 19:19:48

TEST COMMENT: IF: Surface blow died in 7 min.
 IS: No return.
 FF: No blow. Pulled tool.

PRESSURE SUMMARY



Time (Min.)	Pressure (psig)	Temp (deg F)	Annotation
0	2682.27	127.05	Initial Hydro-static
2	57.89	126.64	Open To Flow (1)
31	49.67	127.48	Shut-In(1)
61	79.53	128.61	End Shut-In(1)
62	51.16	128.62	Open To Flow (2)
73	47.95	128.98	Shut-In(2)
75	2428.90	130.39	Final Hydro-static

Recovery

Length (ft)	Description	Volume (bbl)
5.00	mud 100%m	0.02

Gas Rates

Choke (inches)	Pressure (psig)	Gas Rate (Mcf/d)



**TRILOBITE
TESTING, INC**

DRILL STEM TEST REPORT

TOOL DIAGRAM

American Warrior Inc
3118 Cummings Rd
Garden City, KS 67846
ATTN: Kevin Timson

6-15s-41w Wallace,KS
Blaesi #6-6
Job Ticket: 59040 **DST#: 1**
Test Start: 2014.09.29 @ 16:02:48

Tool Information

Drill Pipe:	Length: 4738.00 ft	Diameter: 3.80 inches	Volume: 66.46 bbl	Tool Weight:	2000.00 lb
Heavy Wt. Pipe:	Length: 0.00 ft	Diameter: 0.00 inches	Volume: 0.00 bbl	Weight set on Packer:	25000.00 lb
Drill Collar:	Length: 182.00 ft	Diameter: 2.25 inches	Volume: 0.90 bbl	Weight to Pull Loose:	130000.0 lb
			<u>Total Volume: 67.36 bbl</u>	Tool Chased	0.00 ft
Drill Pipe Above KB:	18.00 ft			String Weight: Initial	80000.00 lb
Depth to Top Packer:	4930.00 ft			Final	80000.00 lb
Depth to Bottom Packer:	ft				
Interval between Packers:	80.00 ft				
Tool Length:	108.00 ft				
Number of Packers:	2	Diameter: 6.75 inches			

Tool Comments:

Tool Description	Length (ft)	Serial No.	Position	Depth (ft)	Accum. Lengths
-------------------------	--------------------	-------------------	-----------------	-------------------	-----------------------

Stubb	1.00			4903.00	
Shut In Tool	5.00			4908.00	
Hydraulic tool	5.00			4913.00	
Jars	5.00			4918.00	
Safety Joint	3.00			4921.00	
Packer	5.00			4926.00	28.00 Bottom Of Top Packer
Packer	4.00			4930.00	
Stubb	1.00			4931.00	
Recorder	0.00	8373	Inside	4931.00	
Recorder	0.00	8166	Outside	4931.00	
Perforations	9.00			4940.00	
Change Over Sub	1.00			4941.00	
Drill Pipe	63.00			5004.00	
Change Over Sub	1.00			5005.00	
Bullnose	5.00			5010.00	80.00 Bottom Packers & Anchor

Total Tool Length: 108.00



**TRILOBITE
TESTING, INC**

DRILL STEM TEST REPORT

FLUID SUMMARY

American Warrior Inc
3118 Cummings Rd
Garden City, KS 67846
ATTN: Kevin Timson

6-15s-41w Wallace,KS
Blaesi #6-6
Job Ticket: 59040 **DST#: 1**
Test Start: 2014.09.29 @ 16:02:48

Mud and Cushion Information

Mud Type: Gel Chem	Cushion Type:	Oil API:	0 deg API
Mud Weight: 9.00 lb/gal	Cushion Length: ft	Water Salinity:	0 ppm
Viscosity: 50.00 sec/qt	Cushion Volume: bbl		
Water Loss: 8.79 in ³	Gas Cushion Type:		
Resistivity: 0.00 ohm.m	Gas Cushion Pressure: psig		
Salinity: 3500.00 ppm			
Filter Cake: 1.00 inches			

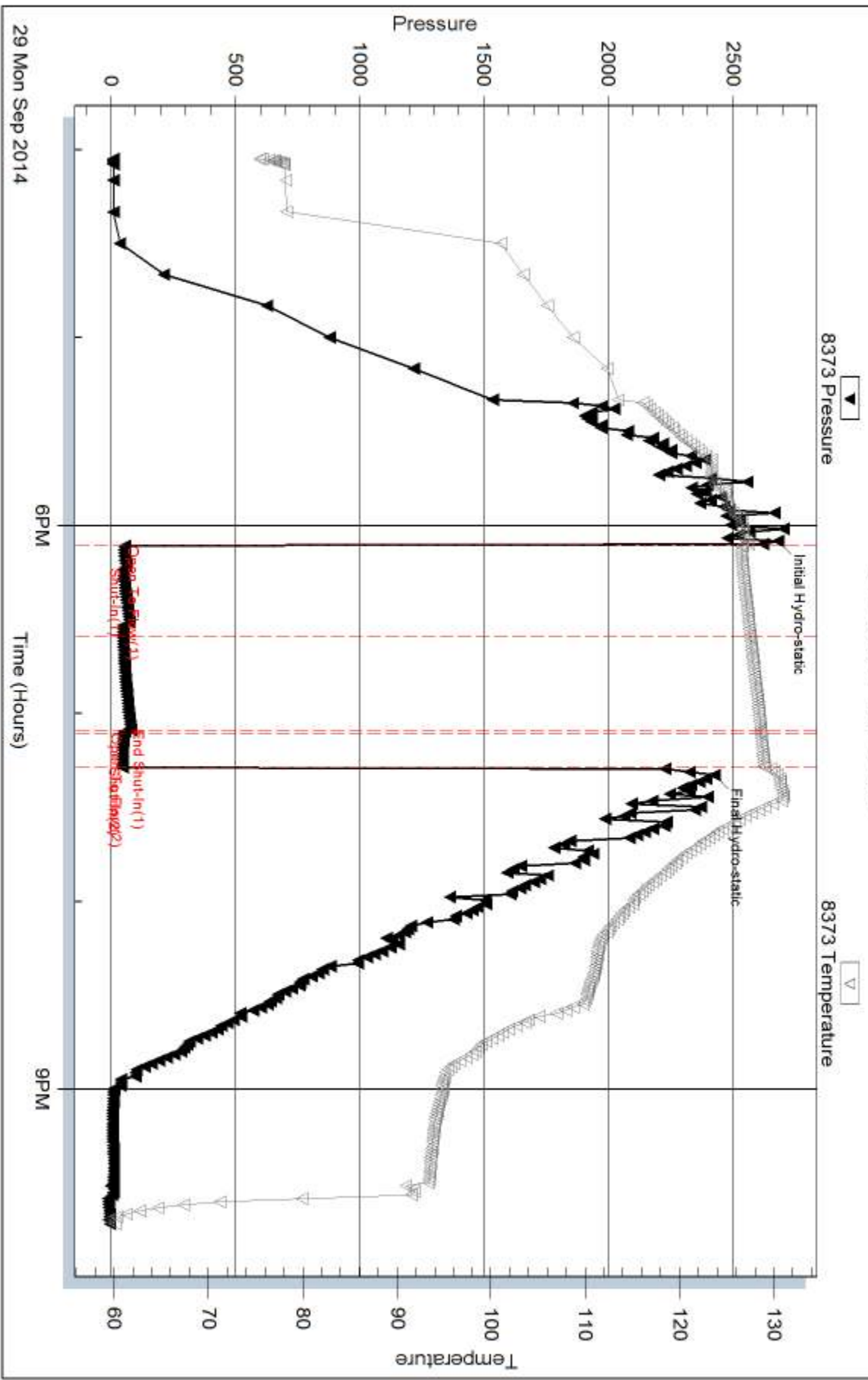
Recovery Information

Recovery Table

Length ft	Description	Volume bbl
5.00	mud 100%m	0.025

Total Length: 5.00 ft Total Volume: 0.025 bbl
Num Fluid Samples: 0 Num Gas Bombs: 0 Serial #:
Laboratory Name: Laboratory Location:
Recovery Comments:

Pressure vs. Time

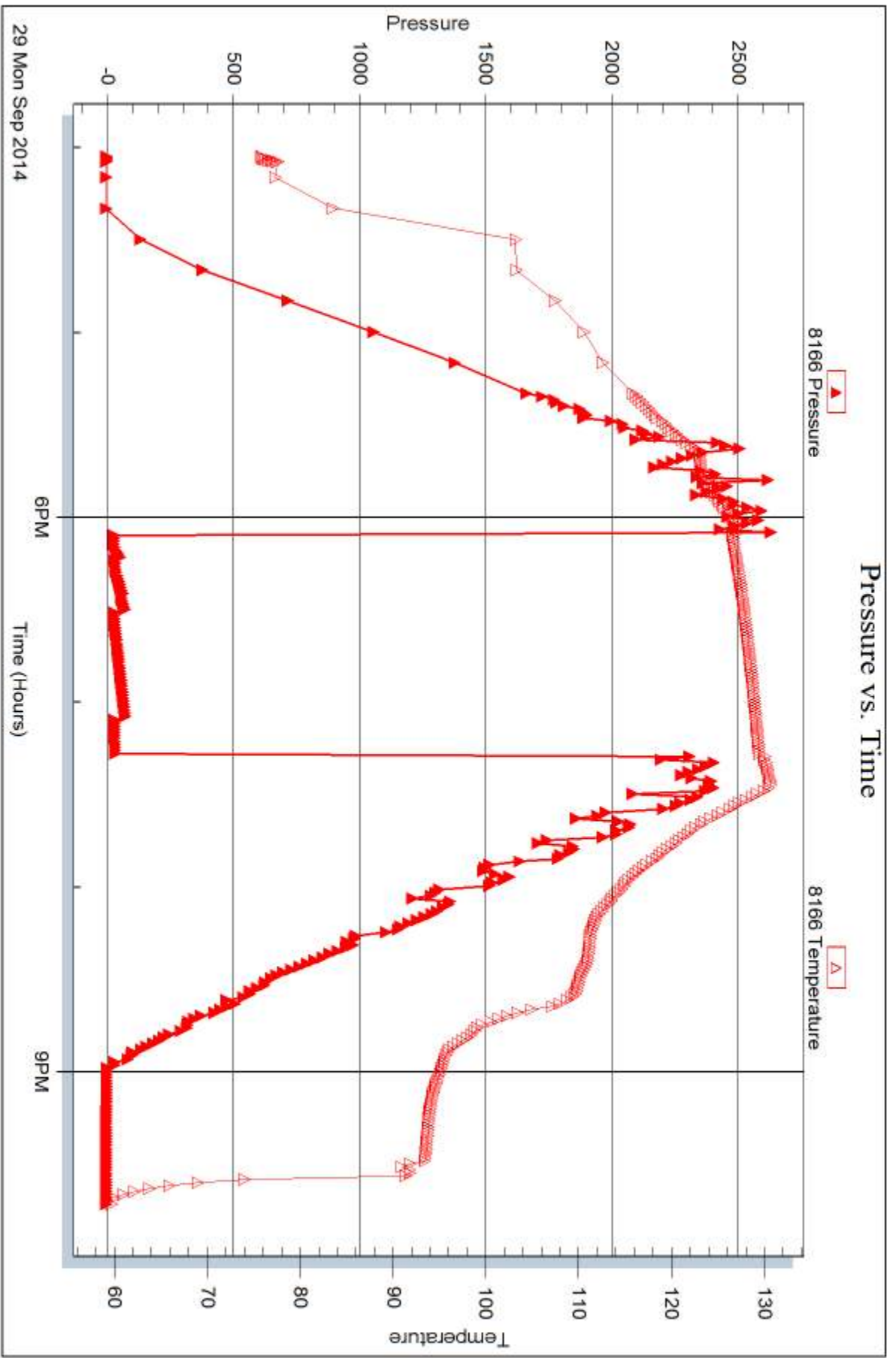


Serial #: 8166

Outside American Warrior Inc

Blaesi #6-6

DST Test Number: 1



Triobite Testing, Inc

Ref. No: 59040

Printed: 2014, 10:03 @ 09:17:49



DRILL STEM TEST REPORT

Prepared For: **American Warrior Inc**

3118 Cummings Rd
Garden City, KS 67846

ATTN: Kevin Timson

Blaesi #6-6

6-15s-41w Wallace,KS

Start Date: 2014.09.30 @ 07:27:00

End Date: 2014.09.30 @ 13:25:00

Job Ticket #: 59041 DST #: 2

Trilobite Testing, Inc
1515 Commerce Parkway Hays, KS 67601
ph: 785-625-4778 fax: 785-625-5620

Printed: 2014.10.03 @ 09:17:16



**TRILOBITE
TESTING, INC**

DRILL STEM TEST REPORT

American Warrior Inc
3118 Cummings Rd
Garden City, KS 67846
ATTN: Kevin Timson

6-15s-41w Wallace, KS

Blaesi #6-6

Job Ticket: 59041

DST#: 2

Test Start: 2014.09.30 @ 07:27:00

GENERAL INFORMATION:

Formation: **Morrow**

Deviated: No Whipstock: ft (KB)

Time Tool Opened: 09:22:30

Time Test Ended: 13:25:00

Test Type: Conventional Bottom Hole (Reset)

Tester: Brandon Turley

Unit No: 60

Interval: 4951.00 ft (KB) To 5050.00 ft (KB) (TVD)

Total Depth: 5050.00 ft (KB) (TVD)

Hole Diameter: 7.88 inches Hole Condition: Good

Reference Elevations: 3795.00 ft (KB)

3785.00 ft (CF)

KB to GR/CF: 10.00 ft

Serial #: 8166 Outside

Press@RunDepth: 39.79 psig @ 4952.00 ft (KB)

Start Date: 2014.09.30

End Date:

2014.09.30

Start Time: 07:27:05

End Time:

13:24:59

Capacity: 8000.00 psig

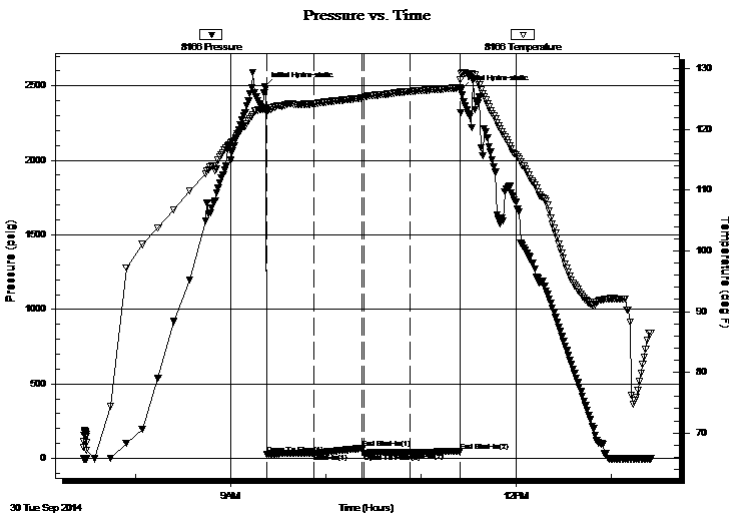
Last Calib.: 2014.09.30

Time On Btm: 2014.09.30 @ 09:21:30

Time Off Btm: 2014.09.30 @ 11:25:30

TEST COMMENT: IF: 1/4" blow built to 2" in 30 min.
IS: No return.
FF: Surface blow built to 1/2" in 30 min.
FS: No return.

PRESSURE SUMMARY



Time (Min.)	Pressure (psig)	Temp (deg F)	Annotation
0	2497.36	123.57	Initial Hydro-static
1	29.42	122.88	Open To Flow (1)
31	34.68	124.26	Shut-In(1)
62	68.61	125.19	End Shut-In(1)
63	35.22	125.25	Open To Flow (2)
92	39.79	126.25	Shut-In(2)
123	49.66	126.90	End Shut-In(2)
124	2473.01	129.18	Final Hydro-static

Recovery

Length (ft)	Description	Volume (bbl)
30.00	mud 100%m	0.15

* Recovery from multiple tests

Gas Rates

Choke (inches)	Pressure (psig)	Gas Rate (Mcf/d)



**TRILOBITE
TESTING, INC**

DRILL STEM TEST REPORT

TOOL DIAGRAM

American Warrior Inc
3118 Cummings Rd
Garden City, KS 67846
ATTN: Kevin Timson

6-15s-41w Wallace,KS
Blaesi #6-6
Job Ticket: 59041 **DST#: 2**
Test Start: 2014.09.30 @ 07:27:00

Tool Information

Drill Pipe:	Length: 4768.00 ft	Diameter: 3.80 inches	Volume: 66.88 bbl	Tool Weight: 2000.00 lb
Heavy Wt. Pipe:	Length: 0.00 ft	Diameter: 0.00 inches	Volume: 0.00 bbl	Weight set on Packer: 25000.00 lb
Drill Collar:	Length: 182.00 ft	Diameter: 2.25 inches	Volume: 0.90 bbl	Weight to Pull Loose: 85000.00 lb
			<u>Total Volume: 67.78 bbl</u>	Tool Chased 0.00 ft
Drill Pipe Above KB:	27.00 ft			String Weight: Initial 75000.00 lb
Depth to Top Packer:	4951.00 ft			Final 75000.00 lb
Depth to Bottom Packer:	ft			
Interval between Packers:	99.00 ft			
Tool Length:	127.00 ft			
Number of Packers:	2	Diameter: 6.75 inches		

Tool Comments:

Tool Description	Length (ft)	Serial No.	Position	Depth (ft)	Accum. Lengths
-------------------------	--------------------	-------------------	-----------------	-------------------	-----------------------

Stubb	1.00			4924.00	
Shut In Tool	5.00			4929.00	
Hydraulic tool	5.00			4934.00	
Jars	5.00			4939.00	
Safety Joint	3.00			4942.00	
Packer	5.00			4947.00	28.00 Bottom Of Top Packer
Packer	4.00			4951.00	
Stubb	1.00			4952.00	
Recorder	0.00	8373	Inside	4952.00	
Recorder	0.00	8166	Outside	4952.00	
Perforations	28.00			4980.00	
Change Over Sub	1.00			4981.00	
Drill Pipe	63.00			5044.00	
Change Over Sub	1.00			5045.00	
Bullnose	5.00			5050.00	99.00 Bottom Packers & Anchor

Total Tool Length: 127.00



**TRILOBITE
TESTING, INC**

DRILL STEM TEST REPORT

FLUID SUMMARY

American Warrior Inc
3118 Cummings Rd
Garden City, KS 67846
ATTN: Kevin Timson

6-15s-41w Wallace,KS
Blaesi #6-6
Job Ticket: 59041 **DST#: 2**
Test Start: 2014.09.30 @ 07:27:00

Mud and Cushion Information

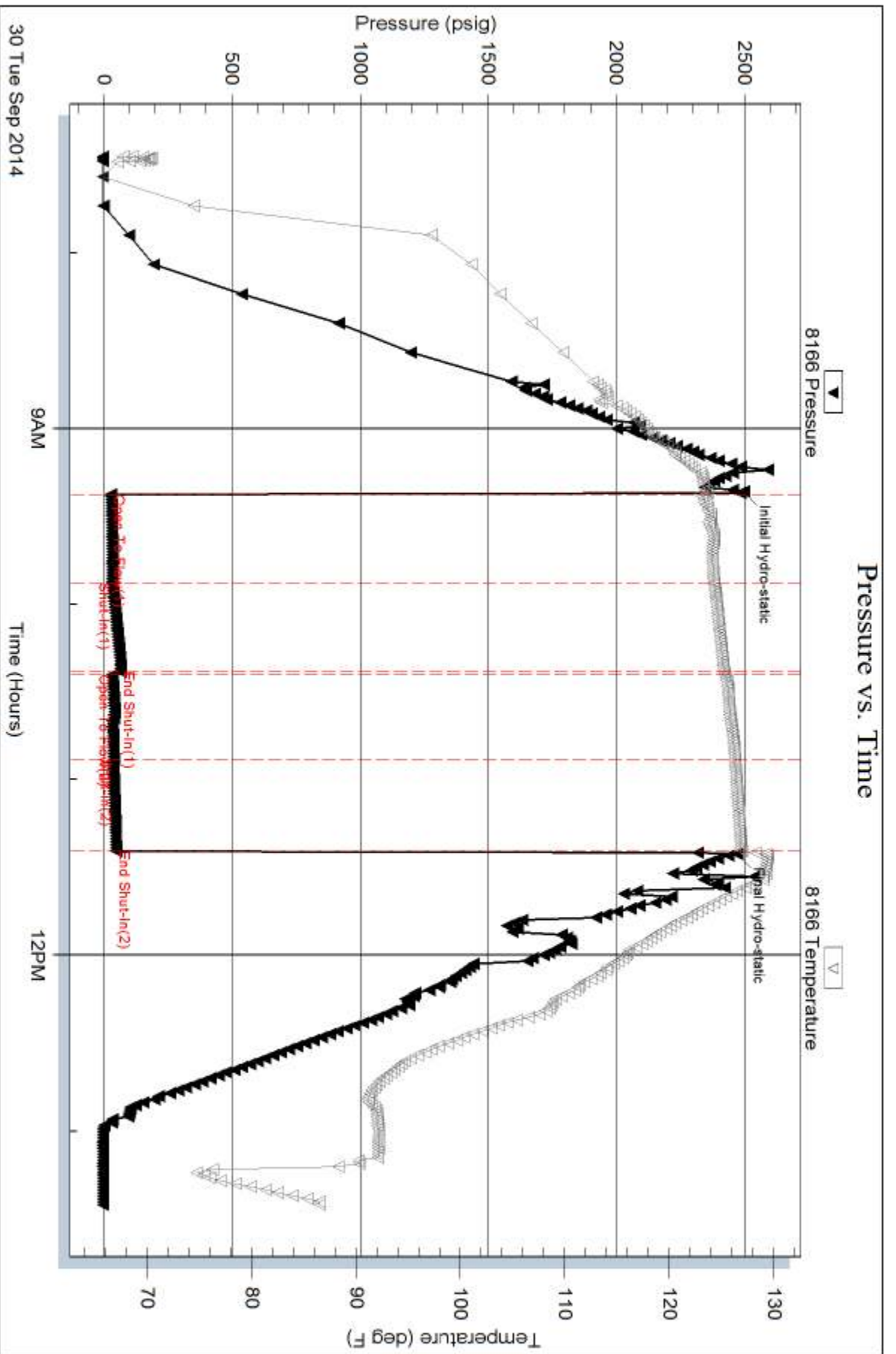
Mud Type: Gel Chem	Cushion Type:	Oil API:	0 deg API
Mud Weight: 9.00 lb/gal	Cushion Length: ft	Water Salinity:	0 ppm
Viscosity: 50.00 sec/qt	Cushion Volume: bbl		
Water Loss: 8.78 in ³	Gas Cushion Type:		
Resistivity: 0.00 ohm.m	Gas Cushion Pressure: psig		
Salinity: 3500.00 ppm			
Filter Cake: 1.00 inches			

Recovery Information

Recovery Table

Length ft	Description	Volume bbl
30.00	mud 100%m	0.148

Total Length: 30.00 ft Total Volume: 0.148 bbl
 Num Fluid Samples: 0 Num Gas Bombs: 0 Serial #:
 Laboratory Name: Laboratory Location:
 Recovery Comments:



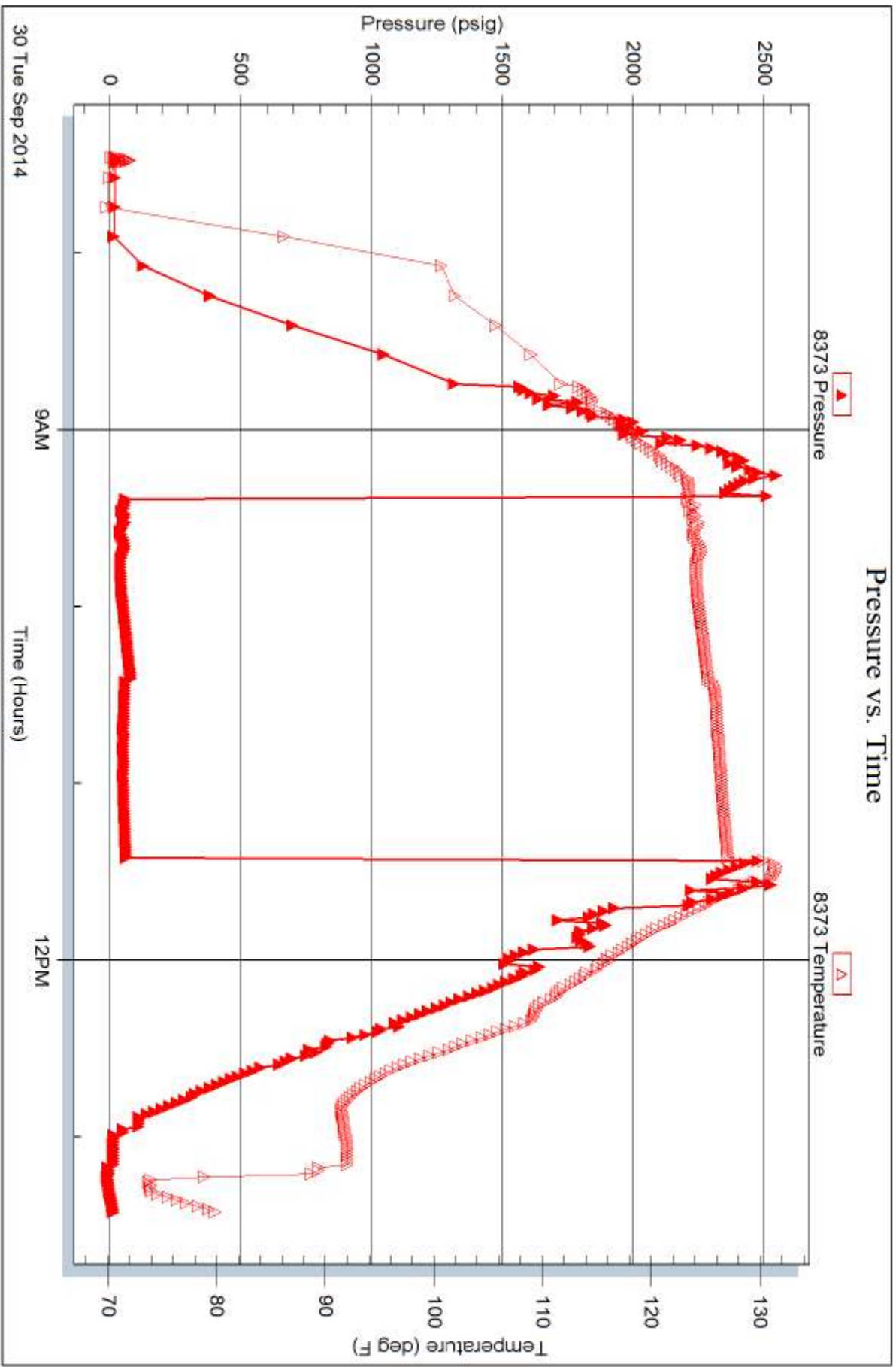
Serial #: 8373

Inside

American Warrior Inc

Blaesl #6-6

DST Test Number: 2



Trilobite Testing, Inc

Ref. No: 59041

Printed: 2014, 10:03 @ 09:17:17



TRILOBITE TESTING INC.

1515 Commerce Parkway • Hays, Kansas 67601

Test Ticket

NO. 59040

Well Name & No. Blaesi #6-6 Test No. 1 Date 9-29-14
 Company American Warrior Inc Elevation 3795 KB 3785 GL
 Address 3118 Cummings Rd Garden City, KS 67846
 Co. Rep / Geo. Kevin Timson Rig Duke #9
 Location: Sec. 6 Twp. 15 Rge. 41 Co. W9119ce State KS

Interval Tested 4930 5010 Zone Tested Morrow
 Anchor Length 80 Drill Pipe Run 4738 Mud Wt. 9.3
 Top Packer Depth 4925 Drill Collars Run 182 Vis 50
 Bottom Packer Depth 4930 Wt. Pipe Run --- WL 8.8
 Total Depth 5010 Chlorides 3500 ppm System LCM 3
 Blow Description IF: surface blow died in 7 min,
IS: No return,
FF: No blow, pulled tools,

Rec	Feet of	%gas	%oil	%water	%mud
<u>5</u>	<u>mud</u>			<u>100</u>	

Rec Total 5 BHT 128 Gravity --- API RW --- @ --- ° F Chlorides --- ppm

(A) Initial Hydrostatic 2682 Test 1350 T-On Location 14:00
 (B) First Initial Flow 57 Jars 250 T-Started 16:02
 (C) First Final Flow 49 Safety Joint 75 T-Open 18:04
 (D) Initial Shut-In 79 Circ Sub NIL T-Pulled 19:14
 (E) Second Initial Flow 51 Hourly Standby --- T-Out 21:44
 (F) Second Final Flow 47 Mileage 156- 241.80
 (G) Final Shut-In --- Sampler ---
 (H) Final Hydrostatic 2428 Straddle ---
 Shale Packer ---
 Extra Packer ---
 Extra Recorder ---
 Day Standby ---
 Accessibility ---

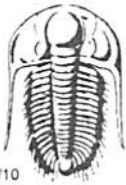
Initial Open 30
 Initial Shut-In 30
 Final Flow 10
 Final Shut-In ---

Sub Total 1916.80

Sub Total 1916.80

Approved By _____ Our Representative [Signature]

Trilobite Testing Inc. shall not be liable for damaged of any kind of the property or personnel of the one for whom a test is made, or for any loss suffered or sustained, directly or indirectly, through the use of its equipment, or its statements or opinion concerning the results of any test, tools lost or damaged in the hole shall be paid for at cost by the party for whom the test is made.



TRILOBITE TESTING INC.

1515 Commerce Parkway • Hays, Kansas 67601

Test Ticket

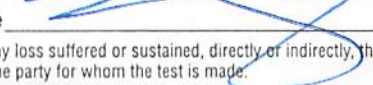
NO. 59041

Well Name & No. Blaesi #6-6 Test No. 2 Date 9-30-14
 Company American Warrior Inc Elevation 3795 KB 3785 GL
 Address _____
 Co. Rep / Geo. Kevin Timson Rig Duke 9
 Location: Sec. 6 Twp. 15 Rge. 41 Co. Wallace State KS

Interval Tested 4951 5050 Zone Tested Morrow
 Anchor Length 99 Drill Pipe Run 4768 Mud Wt. 9.3
 Top Packer Depth 4946 Drill Collars Run 182 Vis 50
 Bottom Packer Depth 4951 Wt. Pipe Run _____ WL 8.8
 Total Depth 5050 Chlorides 3500 ppm System LCM 3
 Blow Description IF: 1/4 blow built to 2 in 30 min.
IS: No return.
FF: surface blow built to 1/2 in 30 min.
FS: No return.

Rec	Feet of	%gas	%oil	%water	%mud
<u>30</u>	<u>mud</u>			<u>100</u>	
Rec	Feet of	%gas	%oil	%water	%mud
Rec	Feet of	%gas	%oil	%water	%mud
Rec	Feet of	%gas	%oil	%water	%mud
Rec	Feet of	%gas	%oil	%water	%mud

Rec Total 30 BHT 126 Gravity _____ API RW _____ @ _____ °F Chlorides _____ ppm
 (A) Initial Hydrostatic 2497 Test 1350 T-On Location 7:00
 (B) First Initial Flow 29 Jars 250 T-Started 7:27
 (C) First Final Flow 34 Safety Joint 75 T-Open 9:23
 (D) Initial Shut-In 68 Circ Sub NIL T-Pulled 11:23
 (E) Second Initial Flow 35 Hourly Standby _____ T-Out 13:30
 (F) Second Final Flow 39 Mileage 156 241.80 Comments Motel
 (G) Final Shut-In 49 Sampler _____
 (H) Final Hydrostatic 2473 Straddle _____ Ruined Shale Packer _____
 Shale Packer _____ Ruined Packer 320
 Extra Packer _____ Extra Copies _____
 Initial Open 30 Extra Recorder _____ Sub Total 0
 Initial Shut-In 30 Day Standby _____ Total 2236.80
 Final Flow 30 Accessibility _____ MP/DST Disc't _____
 Final Shut-In 30 Sub Total 1916.80

Approved By _____ Our Representative 

Trilobite Testing Inc. shall not be liable for damaged of any kind of the property or personnel of the one for whom a test is made, or for any loss suffered or sustained, directly or indirectly, through the use of its equipment, or its statements or opinion concerning the results of any test, tools lost or damaged in the hole shall be paid for at cost by the party for whom the test is made.