



Geologic Report

Drilling Time and Sample Log

Operator **American Warrior, Inc.**

Lease **LH** No. **1-19**

API # **15-135-25790-0000**

Field **Kleweno Southeast**

Location **1960' FNL & 2310' FWL**

Sec. **19** Twp. **17s** Rge. **21w**

County **Ness** State **Kansas**

Formation Log Tops Sample Tops Struct Comp

Anhydrite Base 1557' +699 -2 1592' +664 -2

Heebner 3719' -1463 -1

Lansing 3763' -1507 -1

BKc 4033' -1777 +1

Pawnee 4141' -1885 -3

Fort Scott 4217' -1961 -1

Cherokee 4234' -1978 -4

Mississippian 4320' -2053 -4

Osage 4320' -2064 -1

Total Depth 4346' -2090

Reference Well For Structural Comparison American Warrior, Inc. Elmer's #1-19 550' FNL & 1920' FEL Ness Co. Kansas

Drilling Contractor **Discovery Drilling Co. Inc.** Rig #3
Commenced **7-25-2014** Completed **8-1-2014**
Samples Saved From **3950'** To **RTD**
Drilling Time Kept From **3600'** To **RTD**
Samples Examined From **3950'** To **RTD**
Geological Supervision From **3950'** To **RTD**

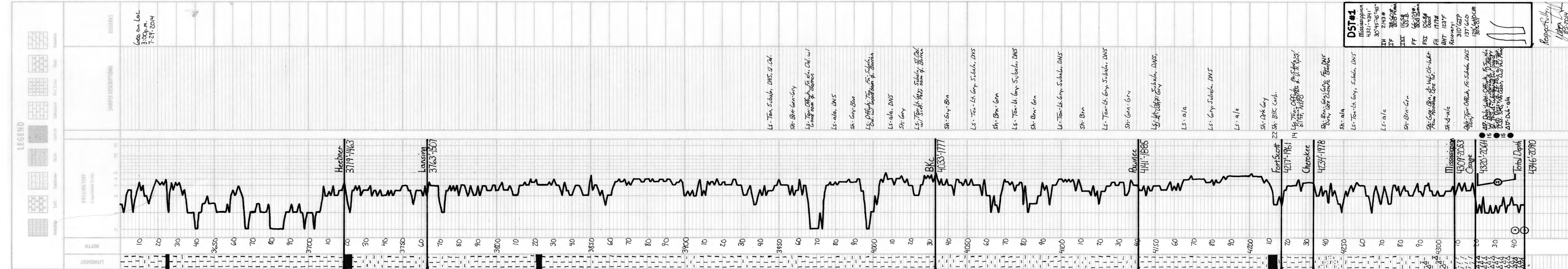
Displacement **3500'** Mud Type **Chemical**

Summary and Recommendations

The location for the LH #1-19 was found via 3-D seismic survey. The new well ran structurally as expected via the survey. One Drill Stem Test was conducted which recovered commercial amounts of oil from the Mississippian Osage Formation. After all gathered data had been examined the decision was made to run 5 1/2 inch production casing to further evaluate the LH #1-19 well.

Respectfully Submitted,

Jason T Alm
Hard Rock Consulting, Inc.



DST #1
Mississippian
4321'-4341'
30'-45'-45'-45"
IH 2143 #
IF 3806 #
ISI 1658 #
FF 66-109 #
FSI 808 #
FSI 1068 #
FH 1918 #
BHT 123 F
Recovery: 310 GTP
137 GCO
138% GPM

Respectfully,
Jason T Alm
8-5-2014