



DRILL STEM TEST REPORT

Prepared For: **American Warrior, Inc.**

PO Box 399
Garden City, KS 67846

ATTN: Jason Alm

EHT #2-17

17-18s-21w Ness,KS

Start Date: 2014.08.05 @ 01:54:50

End Date: 2014.08.05 @ 08:39:50

Job Ticket #: 58388 DST #: 1

Trilobite Testing, Inc
1515 Commerce Parkway Hays, KS 67601
ph: 785-625-4778 fax: 785-625-5620

Printed: 2014.08.07 @ 13:17:34



TRILOBITE TESTING, INC

DRILL STEM TEST REPORT

American Warrior, Inc.

17-18s-21w Ness, KS

PO Box 399
Garden City, KS 67846

EHT #2-17

Job Ticket: 58388

DST#: 1

ATTN: Jason Alm

Test Start: 2014.08.05 @ 01:54:50

GENERAL INFORMATION:

Formation: **Cherokee**

Deviated: No Whipstock: ft (KB)

Time Tool Opened: 05:06:50

Time Test Ended: 08:39:50

Test Type: Conventional Bottom Hole (Initial)

Tester: Brannan Lonsdale

Unit No: 62

Interval: 4194.00 ft (KB) To 4240.00 ft (KB) (TVD)

Reference Elevations: 2194.00 ft (KB)

Total Depth: 4240.00 ft (KB) (TVD)

2188.00 ft (CF)

Hole Diameter: 7.88 inches Hole Condition: Fair

KB to GR/CF: 6.00 ft

Serial #: 8673 Outside

Press@RunDepth: 24.55 psig @ 4195.00 ft (KB)

Capacity: 8000.00 psig

Start Date: 2014.08.05

End Date:

2014.08.05

Last Calib.:

2014.08.05

Start Time: 01:54:51

End Time:

08:39:50

Time On Btm:

2014.08.05 @ 05:04:50

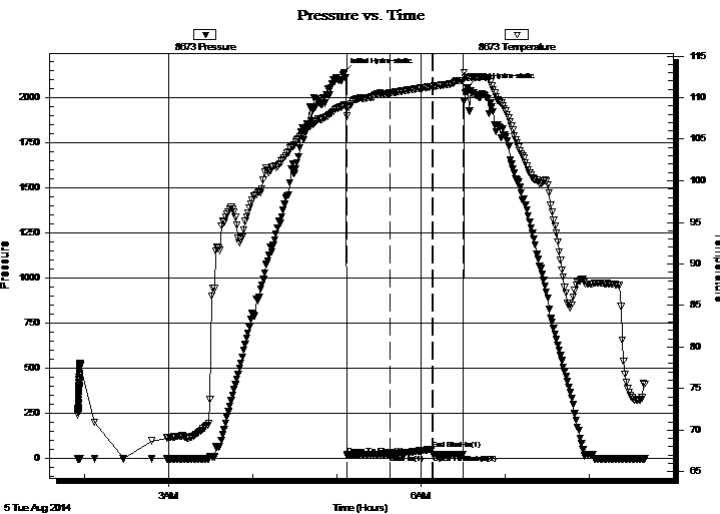
Time Off Btm:

2014.08.05 @ 06:32:50

TEST COMMENT: 30- IF- Slowly built to 3/4" in 13 mins and maintained blow throughout

30- IS- No blow

10- FF- No blow pulled tool



PRESSURE SUMMARY

Time (Min.)	Pressure (psig)	Temp (deg F)	Annotation
0	2140.82	109.12	Initial Hydro-static
2	21.28	107.77	Open To Flow (1)
33	24.55	110.56	Shut-In(1)
63	52.26	111.33	End Shut-In(1)
64	24.99	111.37	Open To Flow (2)
85	26.30	112.09	Shut-In(2)
88	2054.35	112.44	Final Hydro-static

Recovery

Length (ft)	Description	Volume (bbl)
5.00	M	0.02

Gas Rates

	Choke (inches)	Pressure (psig)	Gas Rate (Mcf/d)



**TRILOBITE
TESTING, INC**

DRILL STEM TEST REPORT

American Warrior, Inc.
PO Box 399
Garden City, KS 67846
ATTN: Jason Alm

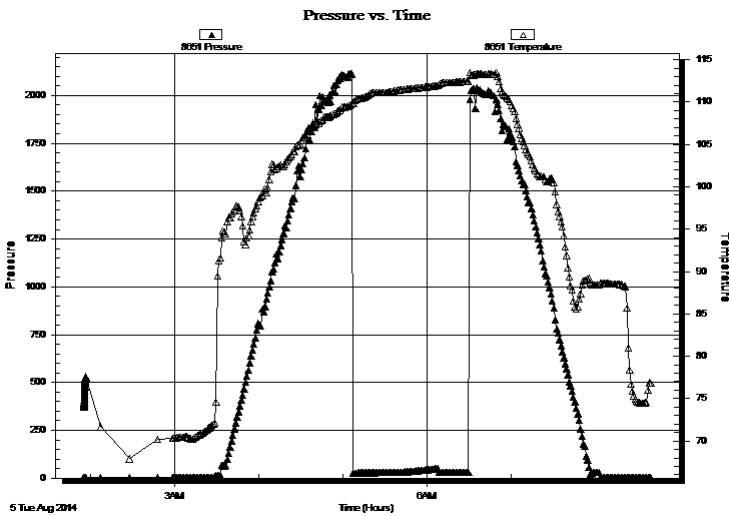
17-18s-21w Ness, KS
EHT #2-17
Job Ticket: 58388 **DST#: 1**
Test Start: 2014.08.05 @ 01:54:50

GENERAL INFORMATION:

Formation: **Cherokee**
Deviated: No Whipstock: ft (KB)
Time Tool Opened: 05:06:50
Time Test Ended: 08:39:50
Interval: 4194.00 ft (KB) To 4240.00 ft (KB) (TVD)
Total Depth: 4240.00 ft (KB) (TVD)
Hole Diameter: 7.88 inches Hole Condition: Fair
Test Type: Conventional Bottom Hole (Initial)
Tester: Brannan Lonsdale
Unit No: 62
Reference Elevations: 2194.00 ft (KB)
2188.00 ft (CF)
KB to GR/CF: 6.00 ft

Serial #: 8651 Inside
Press@RunDepth: psig @ 4195.00 ft (KB) Capacity: 8000.00 psig
Start Date: 2014.08.05 End Date: 2014.08.05 Last Calib.: 2014.08.05
Start Time: 01:55:01 End Time: 08:40:00 Time On Btm:
Time Off Btm:

TEST COMMENT: 30- IF- Slowly built to 3/4" in 13 mins and maintained blow throughout
30- IS- No blow
10- FF- No blow pulled tool



PRESSURE SUMMARY

Time (Min.)	Pressure (psig)	Temp (deg F)	Annotation

Recovery

Length (ft)	Description	Volume (bbl)
5.00	M	0.02

Gas Rates

	Choke (inches)	Pressure (psig)	Gas Rate (Mcf/d)



**TRILOBITE
TESTING, INC**

DRILL STEM TEST REPORT

TOOL DIAGRAM

American Warrior, Inc.

17-18s-21w Ness, KS

PO Box 399
Garden City, KS 67846

EHT #2-17

Job Ticket: 58388

DST#: 1

ATTN: Jason Alm

Test Start: 2014.08.05 @ 01:54:50

Tool Information

Drill Pipe:	Length: 4065.00 ft	Diameter: 3.75 inches	Volume: 55.53 bbl	Tool Weight: 2500.00 lb
Heavy Wt. Pipe:	Length: ft	Diameter: 2.75 inches	Volume: - bbl	Weight set on Packer: 25000.00 lb
Drill Collar:	Length: 117.00 ft	Diameter: 2.25 inches	Volume: 0.58 bbl	Weight to Pull Loose: 90000.00 lb
			<u>Total Volume: - bbl</u>	Tool Chased 0.00 ft
Drill Pipe Above KB:	15.00 ft			String Weight: Initial 59000.00 lb
Depth to Top Packer:	4194.00 ft			Final 62000.00 lb
Depth to Bottom Packer:	ft			
Interval between Packers:	46.00 ft			
Tool Length:	73.00 ft			
Number of Packers:	2	Diameter: 6.75 inches		

Tool Comments:

Tool Description

Tool Description	Length (ft)	Serial No.	Position	Depth (ft)	Accum. Lengths
Change Over Sub	1.00			4168.00	
Shut In Tool	5.00			4173.00	
Hydraulic tool	5.00			4178.00	
Jars	5.00			4183.00	
Safety Joint	2.00			4185.00	
Packer	5.00			4190.00	27.00 Bottom Of Top Packer
Packer	4.00			4194.00	
Stubb	1.00			4195.00	
Recorder	0.00	8651	Inside	4195.00	
Recorder	0.00	8673	Outside	4195.00	
Perforations	8.00			4203.00	
Change Over Sub	1.00			4204.00	
Drill Pipe	32.00			4236.00	
Change Over Sub	1.00			4237.00	
Bullnose	3.00			4240.00	46.00 Bottom Packers & Anchor

Total Tool Length: 73.00



**TRILOBITE
TESTING, INC**

DRILL STEM TEST REPORT

FLUID SUMMARY

American Warrior, Inc.

17-18s-21w Ness, KS

PO Box 399
Garden City, KS 67846

EHT #2-17

Job Ticket: 58388

DST#: 1

ATTN: Jason Alm

Test Start: 2014.08.05 @ 01:54:50

Mud and Cushion Information

Mud Type: Gel Chem

Cushion Type:

Oil API:

deg API

Mud Weight: 9.00 lb/gal

Cushion Length:

ft

Water Salinity:

ppm

Viscosity: 49.00 sec/qt

Cushion Volume:

bbbl

Water Loss: 8.77 in³

Gas Cushion Type:

Resistivity: ohm.m

Gas Cushion Pressure:

psig

Salinity: 4200.00 ppm

Filter Cake: inches

Recovery Information

Recovery Table

Length ft	Description	Volume bbl
5.00	M	0.025

Total Length: 5.00 ft Total Volume: 0.025 bbl

Num Fluid Samples: 0

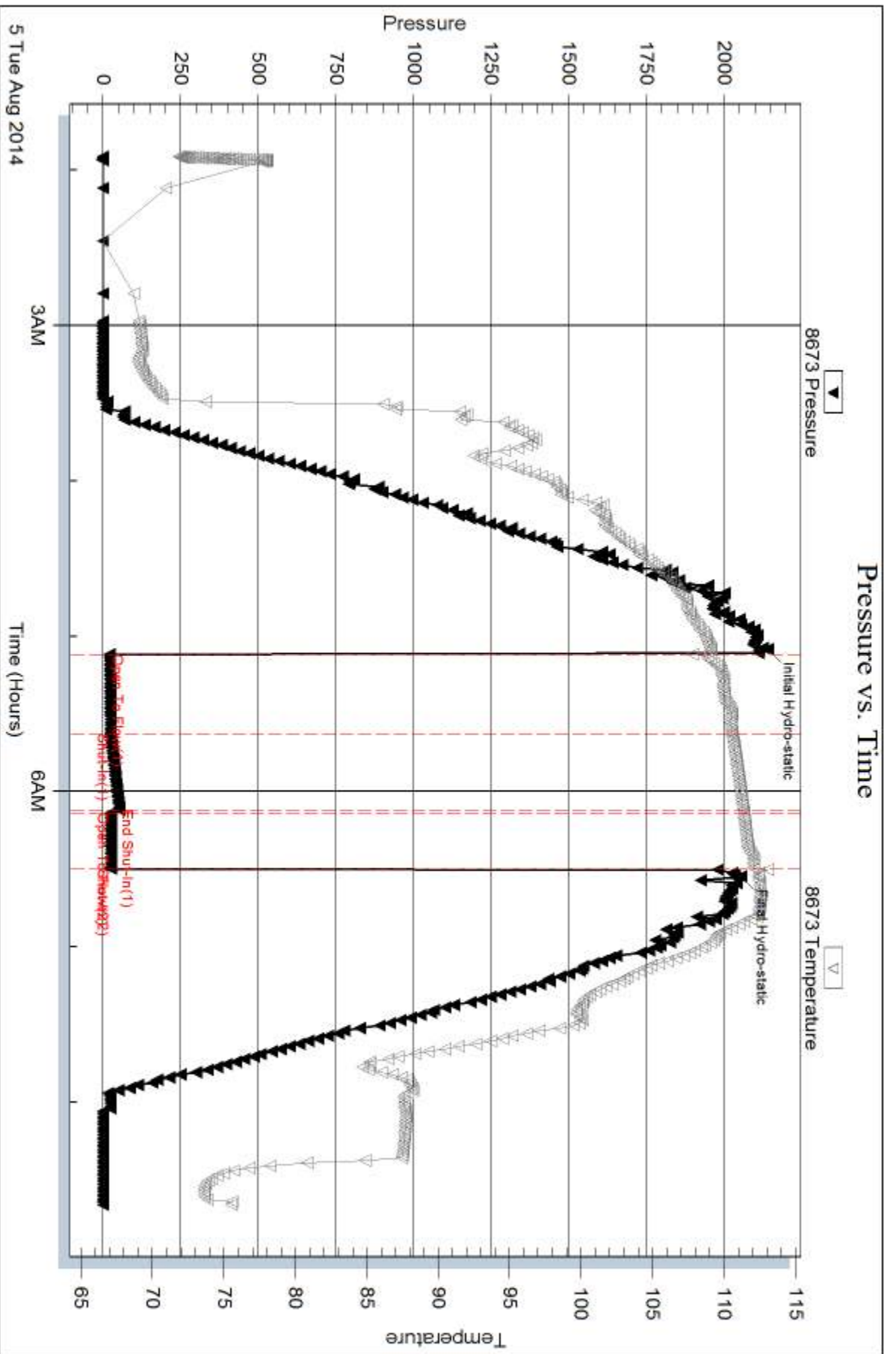
Num Gas Bombs: 0

Serial #:

Laboratory Name:

Laboratory Location:

Recovery Comments:



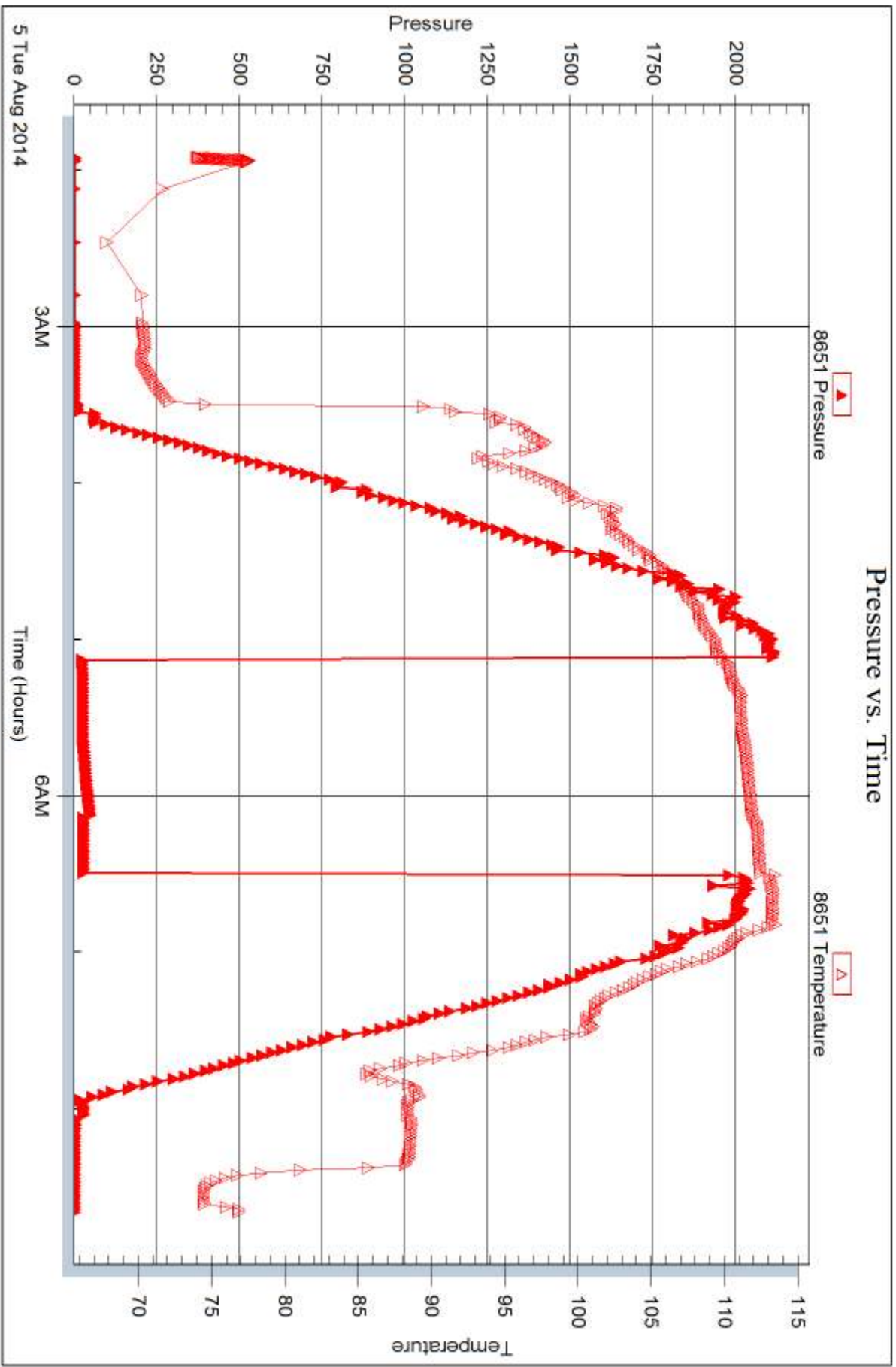
Serial #: 8651

Inside

American Warrior, Inc.

BHT #2-17

DST Test Number: 1



Trilobite Testing, Inc

Ref. No: 58388

Printed: 2014.08.07 @ 13:17:35



DRILL STEM TEST REPORT

Prepared For: **American Warrior, Inc.**

PO Box 399
Garden City, KS 67846

ATTN: Jason Alm

EHT #2-17

17-18s-21w Ness,KS

Start Date: 2014.08.05 @ 17:36:55

End Date: 2014.08.06 @ 01:06:25

Job Ticket #: 58389 DST #: 2

Trilobite Testing, Inc
1515 Commerce Parkway Hays, KS 67601
ph: 785-625-4778 fax: 785-625-5620

Printed: 2014.08.07 @ 13:17:11



TRILOBITE TESTING, INC

DRILL STEM TEST REPORT

American Warrior, Inc.

17-18s-21w Ness, KS

PO Box 399
Garden City, KS 67846

EHT #2-17

Job Ticket: 58389

DST#: 2

ATTN: Jason Alm

Test Start: 2014.08.05 @ 17:36:55

GENERAL INFORMATION:

Formation: **Miss**
 Deviated: No Whipstock: ft (KB)
 Test Type: Conventional Bottom Hole (Reset)
 Time Tool Opened: 21:57:55
 Tester: Brannan Lonsdale
 Time Test Ended: 01:06:25
 Unit No: 62
 Interval: **4289.00 ft (KB) To 4296.00 ft (KB) (TVD)**
 Reference Elevations: 2194.00 ft (KB)
 Total Depth: 4296.00 ft (KB) (TVD)
 2188.00 ft (CF)
 Hole Diameter: 7.88 inches
 Hole Condition: Fair
 KB to GR/CF: 6.00 ft

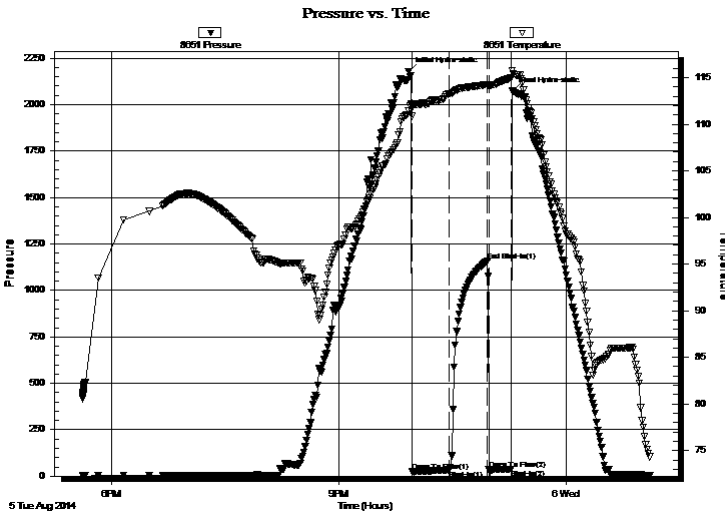
Serial #: 8651

Inside

Press@RunDepth: 31.98 psig @ 4290.00 ft (KB) Capacity: 8000.00 psig
 Start Date: 2014.08.05 End Date: 2014.08.06 Last Calib.: 2014.08.06
 Start Time: 17:36:56 End Time: 01:06:25 Time On Btm: 2014.08.05 @ 21:55:25
 Time Off Btm: 2014.08.05 @ 23:17:25

TEST COMMENT: 30- IF- Built very slow ly to 3/4"
 30- IS- No blow
 10- FF- Sporadic surface blow
 Pulled tool

PRESSURE SUMMARY



Time (Min.)	Pressure (psig)	Temp (deg F)	Annotation
0	2179.46	111.47	Initial Hydro-static
3	24.72	110.86	Open To Flow (1)
32	31.98	113.28	Shut-In(1)
63	1158.09	114.28	End Shut-In(1)
64	34.17	114.05	Open To Flow (2)
81	37.79	114.94	Shut-In(2)
82	2072.39	115.77	Final Hydro-static

Recovery

Length (ft)	Description	Volume (bbl)
30.00	SOWM, 10%O 20%W 70%M	0.15

* Recovery from multiple tests

Gas Rates

Choke (inches)	Pressure (psig)	Gas Rate (Mcf/d)



**TRILOBITE
TESTING, INC**

DRILL STEM TEST REPORT

TOOL DIAGRAM

American Warrior, Inc.

17-18s-21w Ness, KS

PO Box 399
Garden City, KS 67846

EHT #2-17

Job Ticket: 58389

DST#: 2

ATTN: Jason Alm

Test Start: 2014.08.05 @ 17:36:55

Tool Information

Drill Pipe:	Length: 4161.00 ft	Diameter: 3.75 inches	Volume: 56.84 bbl	Tool Weight: 2500.00 lb
Heavy Wt. Pipe:	Length: ft	Diameter: 2.75 inches	Volume: - bbl	Weight set on Packer: 25000.00 lb
Drill Collar:	Length: 117.00 ft	Diameter: 2.25 inches	Volume: 0.58 bbl	Weight to Pull Loose: 75000.00 lb
			<u>Total Volume: - bbl</u>	Tool Chased 0.00 ft
Drill Pipe Above KB:	16.00 ft			String Weight: Initial 60000.00 lb
Depth to Top Packer:	4289.00 ft			Final 61000.00 lb
Depth to Bottom Packer:	ft			
Interval between Packers:	7.00 ft			
Tool Length:	34.00 ft			
Number of Packers:	2	Diameter: 6.75 inches		

Tool Comments:

Tool Description

Tool Description	Length (ft)	Serial No.	Position	Depth (ft)	Accum. Lengths
Change Over Sub	1.00			4263.00	
Shut In Tool	5.00			4268.00	
Hydraulic tool	5.00			4273.00	
Jars	5.00			4278.00	
Safety Joint	2.00			4280.00	
Packer	5.00			4285.00	27.00 Bottom Of Top Packer
Packer	4.00			4289.00	
Stubb	1.00			4290.00	
Recorder	0.00	8651	Inside	4290.00	
Recorder	0.00	8673	Outside	4290.00	
Perforations	3.00			4293.00	
Bullnose	3.00			4296.00	7.00 Bottom Packers & Anchor

Total Tool Length: 34.00



**TRILOBITE
TESTING, INC**

DRILL STEM TEST REPORT

FLUID SUMMARY

American Warrior, Inc.

17-18s-21w Ness, KS

PO Box 399
Garden City, KS 67846

EHT #2-17

Job Ticket: 58389

DST#: 2

ATTN: Jason Alm

Test Start: 2014.08.05 @ 17:36:55

Mud and Cushion Information

Mud Type: Gel Chem

Cushion Type:

Oil API:

deg API

Mud Weight: 9.00 lb/gal

Cushion Length:

ft

Water Salinity:

ppm

Viscosity: 41.00 sec/qt

Cushion Volume:

bbbl

Water Loss: 16.75 in³

Gas Cushion Type:

Resistivity: ohm.m

Gas Cushion Pressure:

psig

Salinity: 12000.00 ppm

Filter Cake: inches

Recovery Information

Recovery Table

Length ft	Description	Volume bbbl
30.00	SOWM, 10%O 20%W 70%M	0.148

Total Length: 30.00 ft Total Volume: 0.148 bbl

Num Fluid Samples: 0

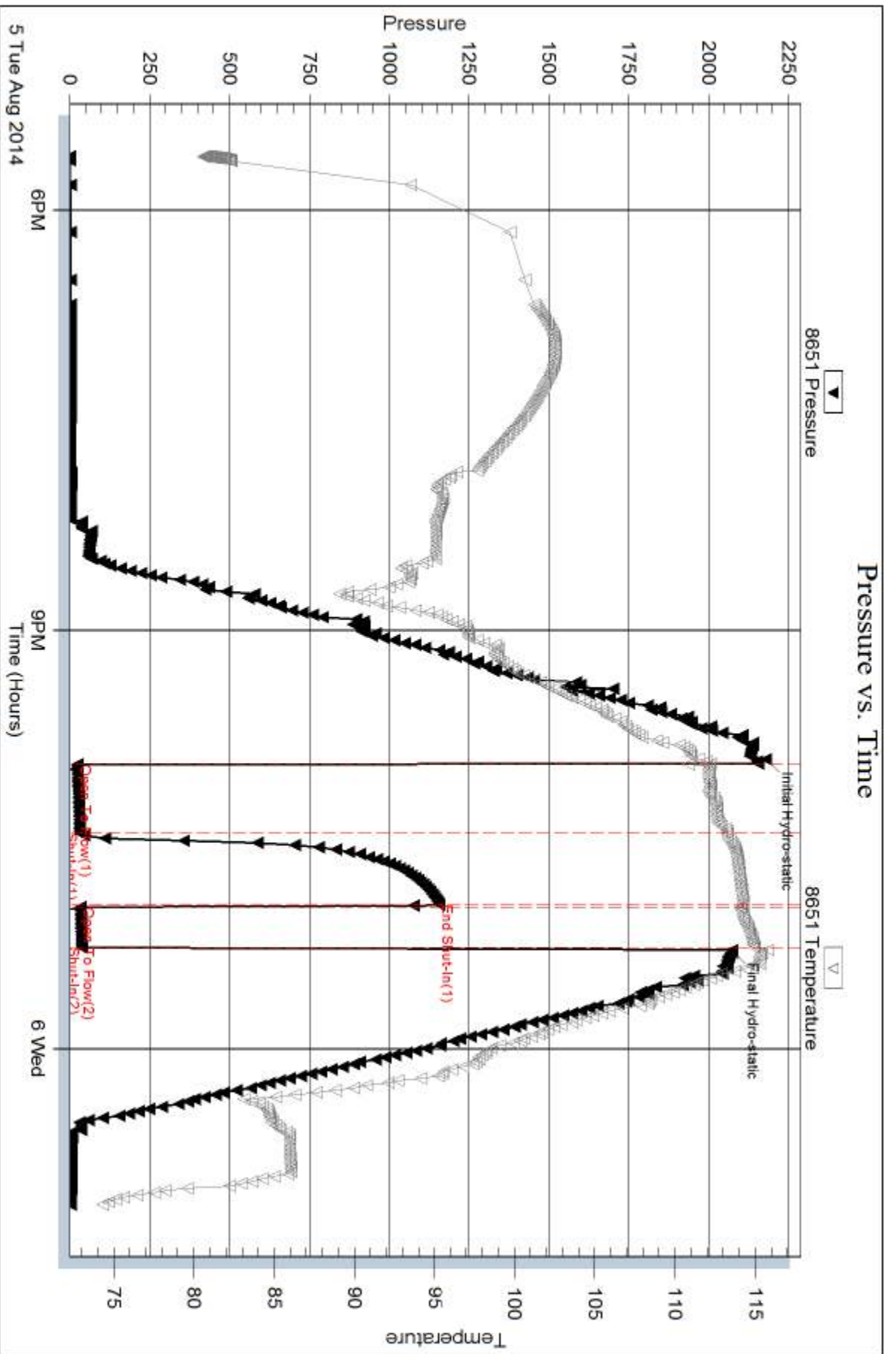
Num Gas Bombs: 0

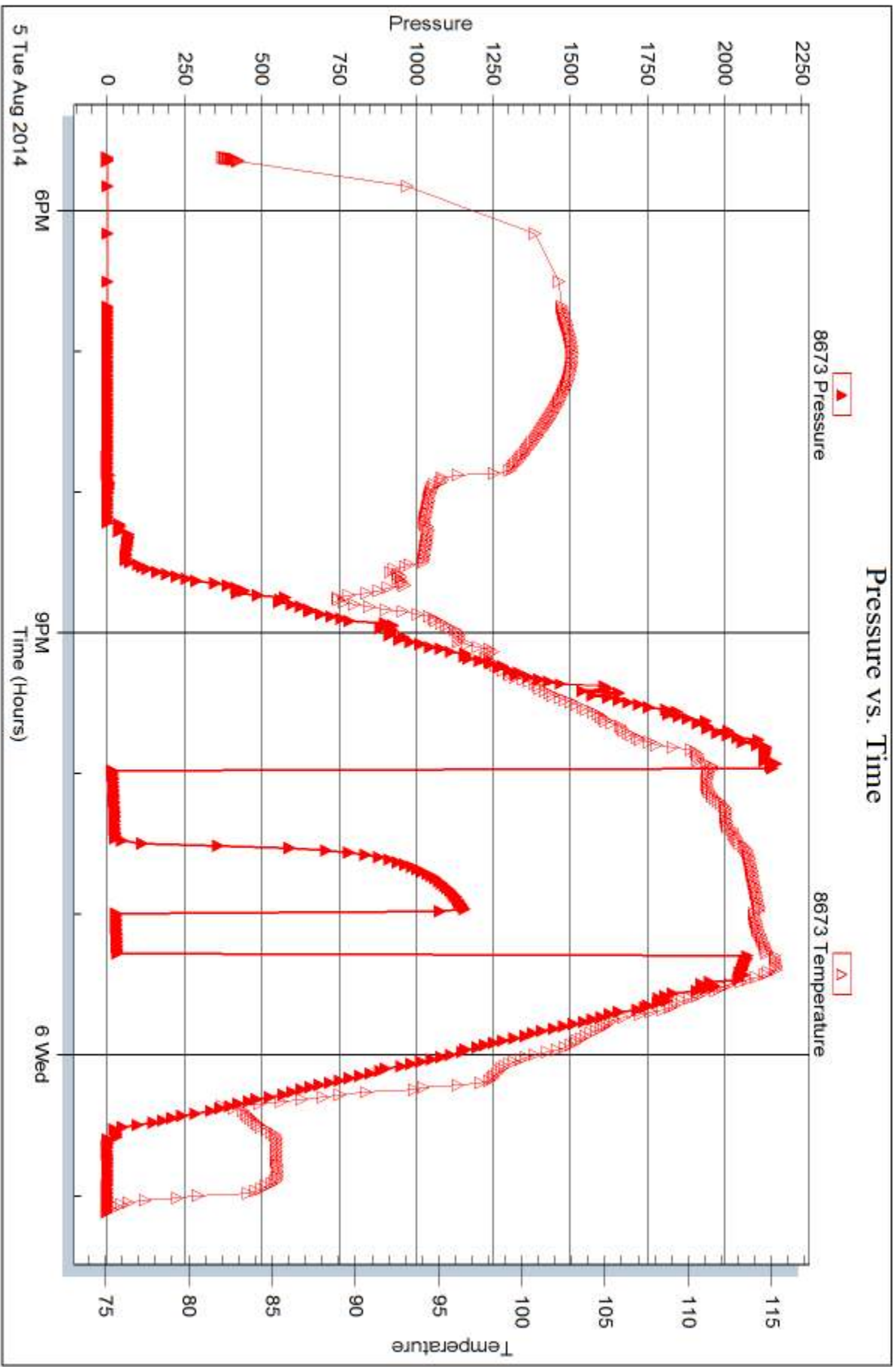
Serial #:

Laboratory Name:

Laboratory Location:

Recovery Comments:







DRILL STEM TEST REPORT

Prepared For: **American Warrior, Inc.**

PO Box 399
Garden City, KS 67846

ATTN: Jason Alm

EHT #2-17

17-18s-21w Ness,KS

Start Date: 2014.08.06 @ 08:33:58

End Date: 2014.08.06 @ 17:07:28

Job Ticket #: 58390 DST #: 3

Trilobite Testing, Inc
1515 Commerce Parkway Hays, KS 67601
ph: 785-625-4778 fax: 785-625-5620

Printed: 2014.08.07 @ 13:16:36



TRILOBITE TESTING, INC

DRILL STEM TEST REPORT

American Warrior, Inc.

17-18s-21w Ness, KS

PO Box 399
Garden City, KS 67846

EHT #2-17

Job Ticket: 58390

DST#: 3

ATTN: Jason Alm

Test Start: 2014.08.06 @ 08:33:58

GENERAL INFORMATION:

Formation: **Miss**
 Deviated: No Whipstock: ft (KB)
 Time Tool Opened: 11:13:58
 Time Test Ended: 17:07:28
 Interval: **4295.00 ft (KB) To 4302.00 ft (KB) (TVD)**
 Total Depth: 4302.00 ft (KB) (TVD)
 Hole Diameter: 7.88 inches Hole Condition: Fair
 Test Type: Conventional Bottom Hole (Reset)
 Tester: Brannan Lonsdale
 Unit No: 62
 Reference Elevations: 2194.00 ft (KB)
 2188.00 ft (CF)
 KB to GR/CF: 6.00 ft

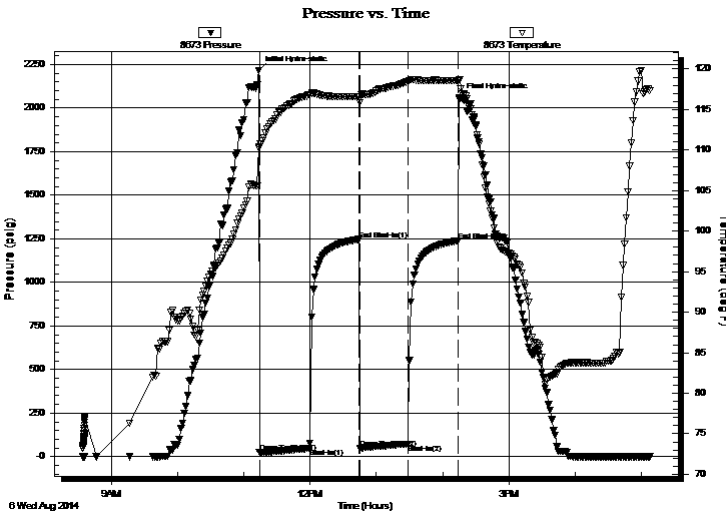
Serial #: 8673

Outside

Press@RunDepth: 71.63 psig @ 4296.00 ft (KB)
 Start Date: 2014.08.06 End Date: 2014.08.06
 Start Time: 08:33:59 End Time: 17:07:28
 Capacity: 8000.00 psig
 Last Calib.: 2014.08.06
 Time On Btm: 2014.08.06 @ 11:13:28
 Time Off Btm: 2014.08.06 @ 14:15:28

TEST COMMENT: 45- IF- Slow ly built to 2 1/4"
 45- IS- No blow
 45- FF- Slow ly built to 1 1/2"
 45- FS- No blow

PRESSURE SUMMARY



Time (Min.)	Pressure (psig)	Temp (deg F)	Annotation
0	2216.08	110.27	Initial Hydro-static
1	23.76	110.42	Open To Flow (1)
46	47.51	116.83	Shut-In(1)
91	1246.63	116.56	End Shut-In(1)
92	49.34	115.89	Open To Flow (2)
135	71.63	118.42	Shut-In(2)
181	1238.68	118.55	End Shut-In(2)
182	2058.14	118.70	Final Hydro-static

Recovery

Length (ft)	Description	Volume (bbl)
120.00	MW, 15%M 85%W	0.62

* Recovery from multiple tests

Gas Rates

Choke (inches)	Pressure (psig)	Gas Rate (Mcf/d)



**TRILOBITE
TESTING, INC.**

DRILL STEM TEST REPORT

American Warrior, Inc.

17-18s-21w Ness, KS

PO Box 399
Garden City, KS 67846

EHT #2-17

Job Ticket: 58390

DST#: 3

ATTN: Jason Alm

Test Start: 2014.08.06 @ 08:33:58

GENERAL INFORMATION:

Formation: **Miss**

Deviated: No Whipstock: ft (KB)

Time Tool Opened: 11:13:58

Time Test Ended: 17:07:28

Interval: 4295.00 ft (KB) To 4302.00 ft (KB) (TVD)

Total Depth: 4302.00 ft (KB) (TVD)

Hole Diameter: 7.88 inches Hole Condition: Fair

Test Type: Conventional Bottom Hole (Reset)

Tester: Brannan Lonsdale

Unit No: 62

Reference Elevations: 2194.00 ft (KB)

2188.00 ft (CF)

KB to GR/CF: 6.00 ft

Serial #: 8651

Inside

Press@RunDepth: psig @ 4296.00 ft (KB)

Start Date: 2014.08.06

End Date:

2014.08.06

Start Time: 08:34:22

End Time:

17:07:21

Capacity: 8000.00 psig

Last Calib.:

2014.08.06

Time On Btm:

Time Off Btm:

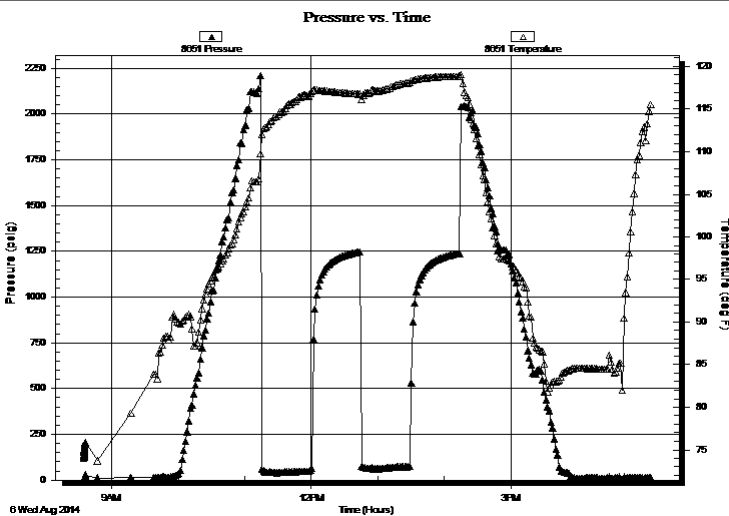
TEST COMMENT: 45- IF- Slow ly built to 2 1/4"

45- IS- No blow

45- FF- Slow ly built to 1 1/2"

45- FS- No blow

PRESSURE SUMMARY



Time (Min.)	Pressure (psig)	Temp (deg F)	Annotation

Recovery

Length (ft)	Description	Volume (bbl)
120.00	MW, 15%M 85%W	0.62

Gas Rates

	Choke (inches)	Pressure (psig)	Gas Rate (Mcf/d)

* Recovery from multiple tests



**TRILOBITE
TESTING, INC**

DRILL STEM TEST REPORT

TOOL DIAGRAM

American Warrior, Inc.

17-18s-21w Ness, KS

PO Box 399
Garden City, KS 67846

EHT #2-17

Job Ticket: 58390

DST#: 3

ATTN: Jason Alm

Test Start: 2014.08.06 @ 08:33:58

Tool Information

Drill Pipe:	Length: 4161.00 ft	Diameter: 3.75 inches	Volume: 56.84 bbl	Tool Weight:	2500.00 lb
Heavy Wt. Pipe:	Length: ft	Diameter: 2.75 inches	Volume: - bbl	Weight set on Packer:	25000.00 lb
Drill Collar:	Length: 117.00 ft	Diameter: 2.25 inches	Volume: 0.58 bbl	Weight to Pull Loose:	80000.00 lb
			<u>Total Volume:</u>	Tool Chased	0.00 ft
			- bbl	String Weight: Initial	60000.00 lb
Drill Pipe Above KB:	10.00 ft			Final	62000.00 lb
Depth to Top Packer:	4295.00 ft				
Depth to Bottom Packer:	ft				
Interval between Packers:	7.00 ft				
Tool Length:	34.00 ft				
Number of Packers:	2	Diameter:	6.75 inches		
Tool Comments:					

Tool Description

Tool Description	Length (ft)	Serial No.	Position	Depth (ft)	Accum. Lengths
Change Over Sub	1.00			4269.00	
Shut In Tool	5.00			4274.00	
Hydraulic tool	5.00			4279.00	
Jars	5.00			4284.00	
Safety Joint	2.00			4286.00	
Packer	5.00			4291.00	27.00 Bottom Of Top Packer
Packer	4.00			4295.00	
Stubb	1.00			4296.00	
Recorder	0.00	8651	Inside	4296.00	
Recorder	0.00	8673	Outside	4296.00	
Perforations	3.00			4299.00	
Bullnose	3.00			4302.00	7.00 Bottom Packers & Anchor

Total Tool Length: 34.00



**TRILOBITE
TESTING, INC**

DRILL STEM TEST REPORT

FLUID SUMMARY

American Warrior, Inc.

17-18s-21w Ness, KS

PO Box 399
Garden City, KS 67846

EHT #2-17

Job Ticket: 58390

DST#: 3

ATTN: Jason Alm

Test Start: 2014.08.06 @ 08:33:58

Mud and Cushion Information

Mud Type: Gel Chem

Cushion Type:

Oil API:

deg API

Mud Weight: 9.00 lb/gal

Cushion Length:

ft

Water Salinity:

28000 ppm

Viscosity: 41.00 sec/qt

Cushion Volume:

bbbl

Water Loss: 16.76 in³

Gas Cushion Type:

Resistivity: ohm.m

Gas Cushion Pressure:

psig

Salinity: 12000.00 ppm

Filter Cake: inches

Recovery Information

Recovery Table

Length ft	Description	Volume bbbl
120.00	MW, 15%M 85%W	0.616

Total Length: 120.00 ft Total Volume: 0.616 bbl

Num Fluid Samples: 0

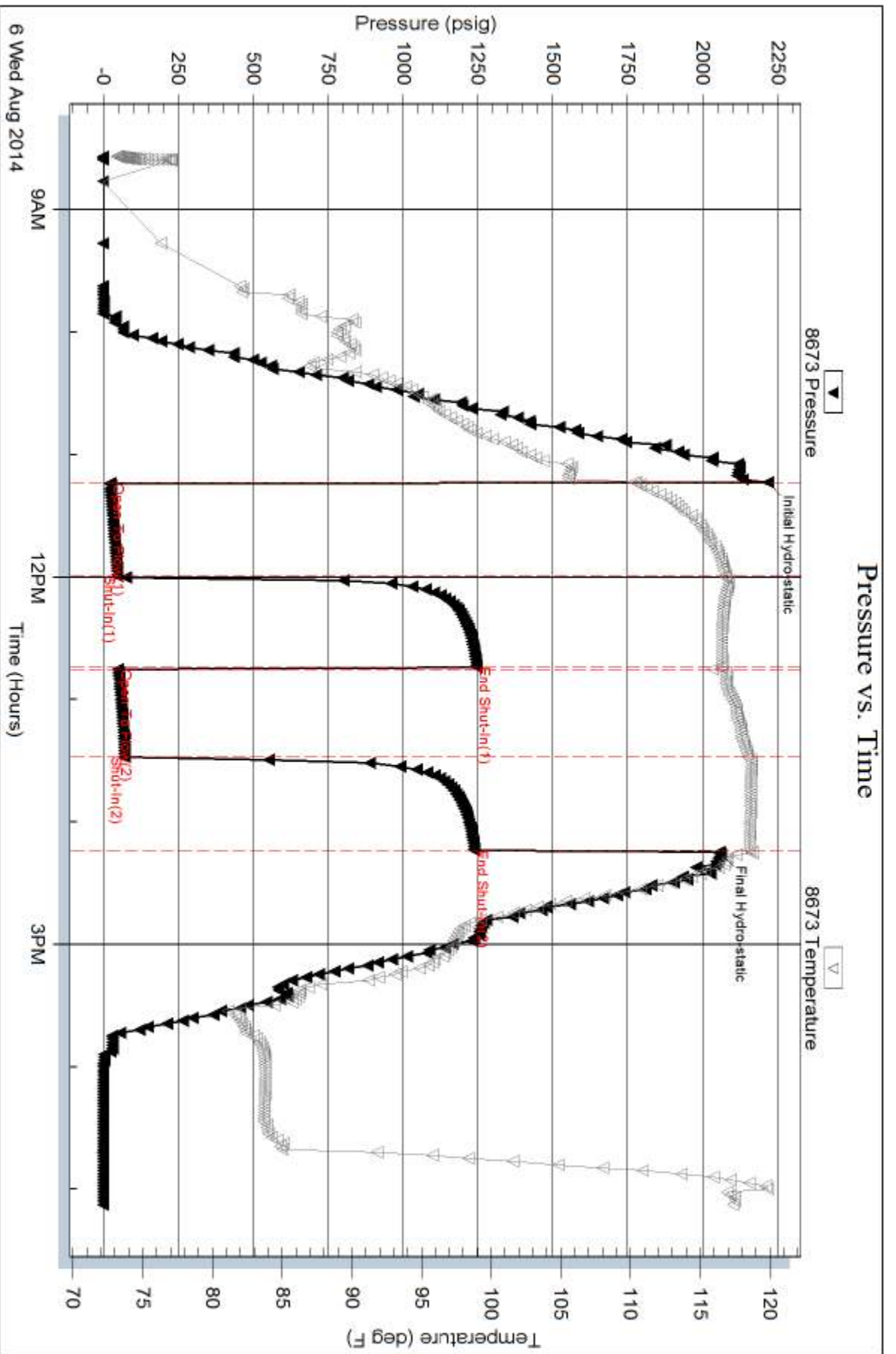
Num Gas Bombs: 0

Serial #:

Laboratory Name:

Laboratory Location:

Recovery Comments:



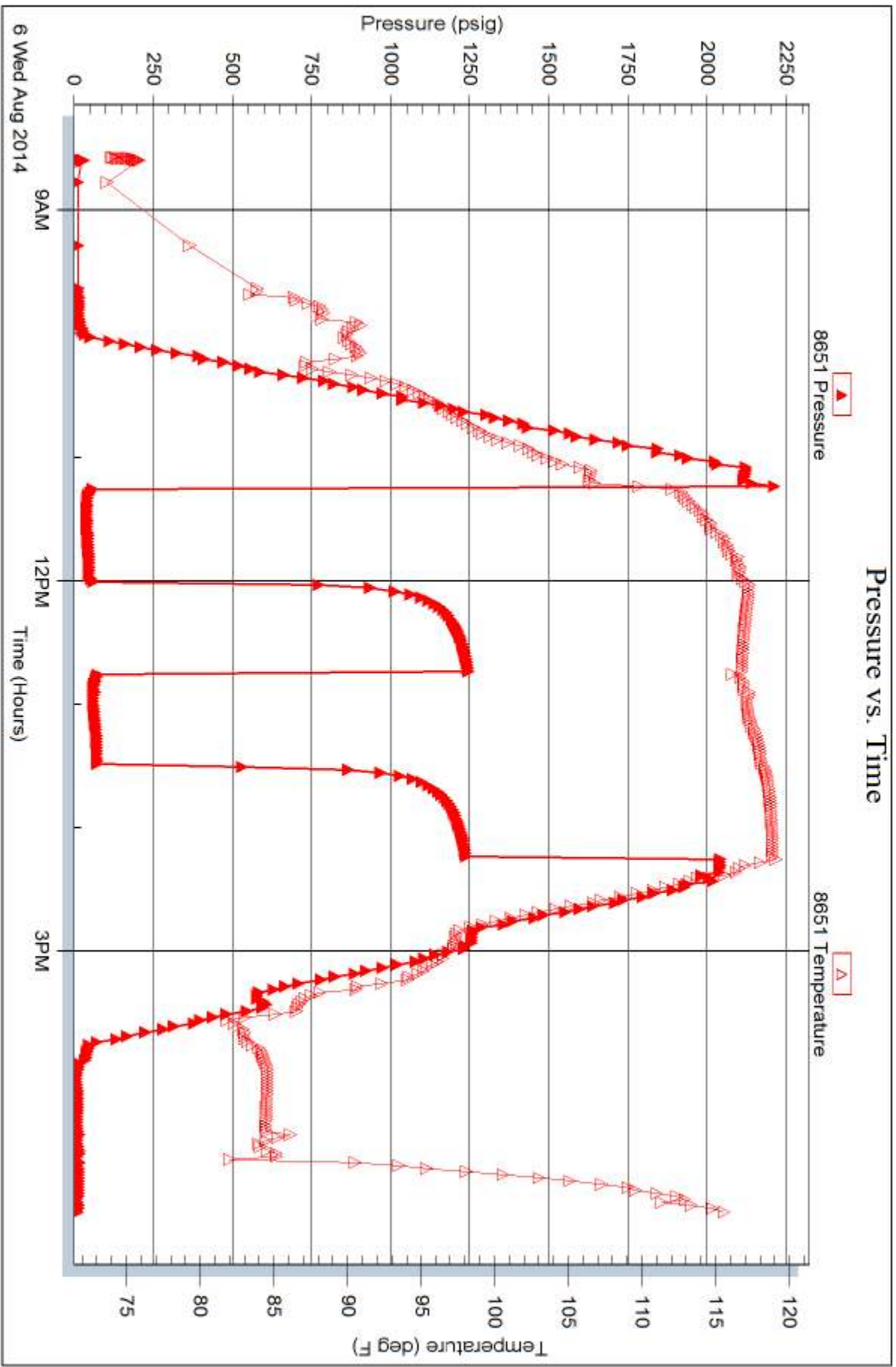
Serial #: 8651

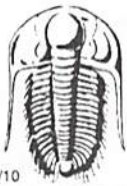
Inside

American Warrior, Inc.

EHT #2-17

DST Test Number: 3





TRILOBITE TESTING INC.

1515 Commerce Parkway • Hays, Kansas 67601

Test Ticket

NO. **58388**

4/10

Well Name & No. American Warrior, Inc Test No. 1 Date 8/5/14
 Company EHT #2-17 Elevation 2194 KB 2188 GL
 Address 3118 Cummings, Rd. PO Box 399 Sarden City, KS 67846
 Co. Rep / Geo. Dason T Ahm Rig Petromark #1
 Location: Sec. 17 Twp. 18S Rge. 21W Co. Ness State KS

Interval Tested 4194-4240 Zone Tested Cherokee
 Anchor Length 46' Drill Pipe Run 4065 Mud Wt. 9.1
 Top Packer Depth 4189 Drill Collars Run 117 Vis 49
 Bottom Packer Depth 4194 Wt. Pipe Run WL 8.8
 Total Depth 4240 Chlorides 4,200 ppm System LCM
 Blow Description IF - slowly built to 3/4" in 13 mins then maintained throughout
PSI - No blow
FF - No blow pulled tool
PSI -

Rec	Feet of	%gas	%oil	%water	%mud
<u>5</u>	<u>M</u>				
Rec	Feet of	%gas	%oil	%water	%mud
Rec	Feet of	%gas	%oil	%water	%mud
Rec	Feet of	%gas	%oil	%water	%mud
Rec	Feet of	%gas	%oil	%water	%mud

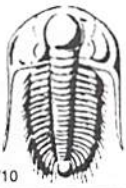
Rec Total 5' BHT 112° Gravity API RW @ ° F Chlorides ppm

(A) Initial Hydrostatic <u>2141</u>	<input checked="" type="checkbox"/> Test <u>1250</u>	T-On Location <u>0140</u>
(B) First Initial Flow <u>21</u>	<input checked="" type="checkbox"/> Jars <u>250</u>	T-Started <u>0155</u>
(C) First Final Flow <u>25</u>	<input checked="" type="checkbox"/> Safety Joint <u>75</u>	T-Open <u>0507</u>
(D) Initial Shut-In <u>52</u>	<input type="checkbox"/> Circ Sub <u> </u>	T-Pulled <u>0617</u>
(E) Second Initial Flow <u>25</u>	<input type="checkbox"/> Hourly Standby <u> </u>	T-Out <u>0840</u>
(F) Second Final Flow <u>26</u>	<input checked="" type="checkbox"/> Mileage <u>110 RT</u> 170.50	Comments <u> </u>
(G) Final Shut-In <u> </u>	<input type="checkbox"/> Sampler <u> </u>	
(H) Final Hydrostatic <u>2054</u>	<input type="checkbox"/> Straddle <u> </u>	<input type="checkbox"/> Ruined Shale Packer <u> </u>
Initial Open <u>30</u>	<input type="checkbox"/> Shale Packer <u> </u>	<input type="checkbox"/> Ruined Packer <u> </u>
Initial Shut-In <u>30</u>	<input type="checkbox"/> Extra Packer <u> </u>	<input type="checkbox"/> Extra Copies <u> </u>
Final Flow <u>10 ↑ pulled</u>	<input type="checkbox"/> Extra Recorder <u> </u>	Sub Total <u>0</u>
Final Shut-In <u> </u>	<input type="checkbox"/> Day Standby <u> </u>	Total <u>1745.50</u>
	<input type="checkbox"/> Accessibility <u> </u>	MP/DST Disc't <u> </u>
	Sub Total <u>1745.50</u>	

Approved By

Our Representative Brannan Lonsdale

Trilobite Testing Inc. shall not be liable for damaged of any kind of the property or personnel of the one for whom a test is made, or for any loss suffered or sustained, directly or indirectly, through the use of its equipment, or its statements or opinion concerning the results of any test, tools lost or damaged in the hole shall be paid for at cost by the party for whom the test is made.



TRILOBITE TESTING INC.

1515 Commerce Parkway • Hays, Kansas 67601

Test Ticket

NO. **58389**

4/10

Well Name & No. EHT #2-17 Test No. 2 Date 8/5/14
 Company American Warrior, Inc. Elevation 2194 KB 2188 GL
 Address 3118 Cummings Rd. PO Box 399 Carden City, KS 67846
 Co. Rep / Geo. Jason T Alm Rig Petromark #1
 Location: Sec. 11 Twp. 18S Rge. 21W Co. Ness State KS

Interval Tested 4289-4296 Zone Tested Moss
 Anchor Length 7' Drill Pipe Run 4161 Mud Wt. 9.2
 Top Packer Depth 4284 Drill Collars Run 117 Vis 41
 Bottom Packer Depth 4289 Wt. Pipe Run WL 16.8
 Total Depth 4296 Chlorides 12,000 ppm System LCM
 Blow Description IF - Built very slowly to 3/4"
ISI - No blow
FF - Sporadic surface blow - Pulled tool
FST -

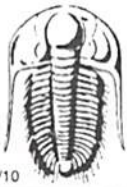
Rec	Feet of	%gas	%oil	%water	%mud
<u>30</u>	<u>SOWM</u>		<u>10</u>	<u>20</u>	<u>70</u>
Rec	Feet of	%gas	%oil	%water	%mud
Rec	Feet of	%gas	%oil	%water	%mud
Rec	Feet of	%gas	%oil	%water	%mud
Rec	Feet of	%gas	%oil	%water	%mud

Rec Total 30' BHT 115° Gravity API RW @ °F Chlorides ppm

(A) Initial Hydrostatic 2179 Test 1250 T-On Location 1705
 (B) First Initial Flow 35 Jars 250 T-Started 1737
 (C) First Final Flow 32 Safety Joint 75 T-Open 2158
 (D) Initial Shut-In 1158 Circ Sub T-Pulled 2308
 (E) Second Initial Flow 34 Hourly Standby T-Out 0107 8/6
 (F) Second Final Flow 38 Mileage 110 RT 170.50 Comments
 (G) Final Shut-In Sampler
 (H) Final Hydrostatic 2072 Straddle Ruined Shale Packer
 Shale Packer Ruined Packer
 Extra Packer Extra Copies
 Extra Recorder Sub Total 0
 Initial Open 30 Day Standby Total 1745.50
 Initial Shut-In 30 Accessibility MP/DST Disc't
 Final Flow 10 ↑ Pulled tool Sub Total 1745.50

Approved By Our Representative Brannen Lonsdale

Trilobite Testing Inc. shall not be liable for damaged of any kind of the property or personnel of the one for whom a test is made, or for any loss suffered or sustained, directly or indirectly, through the use of its equipment, or its statements or opinion concerning the results of any test, tools lost or damaged in the hole shall be paid for at cost by the party for whom the test is made.



TRILOBITE TESTING INC.

1515 Commerce Parkway • Hays, Kansas 67601

Test Ticket

NO. **58390**

4/10

Well Name & No. EHT # 2-17 Test No. 3 Date 8/6/14
 Company American Warrior, Inc. Elevation 2194 KB 2188 GL
 Address 3118 Cummings, Rd. PO Box 399 Garden City, KS 67846
 Co. Rep / Geo. Jason T Alm Rig Petro mark #1
 Location: Sec. 17 Twp. 18S Rge. 21W Co. Ness State KS

Interval Tested 4295-4302 Zone Tested Miss
 Anchor Length 7' Drill Pipe Run 4161 Mud Wt. 9.2
 Top Packer Depth 4290 Drill Collars Run 117 Vis 41
 Bottom Packer Depth 4295 Wt. Pipe Run --- WL 16.8
 Total Depth 4302 Chlorides 12,000 ppm System LCM ---

Blow Description IF - Slowly built to 2 1/4"
ISI - No blow
FF - Slowly built to 1 1/2"
FSD - No blow

Rec	Feet of	%gas	%oil	%water	%mud
<u>120</u>	<u>MW</u>			<u>85</u>	<u>15</u>
Rec	Feet of	%gas	%oil	%water	%mud
Rec	Feet of	%gas	%oil	%water	%mud
Rec	Feet of	%gas	%oil	%water	%mud
Rec	Feet of	%gas	%oil	%water	%mud

Rec Total 120' BHT 119° Gravity --- API RW .15 @ 101 °F Chlorides 28,000 ppm

(A) Initial Hydrostatic <u>2216</u>	<input checked="" type="checkbox"/> Test <u>1250</u>	T-On Location <u>0830</u>
(B) First Initial Flow <u>24</u>	<input checked="" type="checkbox"/> Jars <u>250</u>	T-Started <u>0834</u>
(C) First Final Flow <u>48</u>	<input checked="" type="checkbox"/> Safety Joint <u>75</u>	T-Open <u>1114</u>
(D) Initial Shut-In <u>1247</u>	<input type="checkbox"/> Circ Sub <u>---</u>	T-Pulled <u>1214 1414</u>
(E) Second Initial Flow <u>49</u>	<input type="checkbox"/> Hourly Standby <u>---</u>	T-Out <u>1707</u>
(F) Second Final Flow <u>72</u>	<input checked="" type="checkbox"/> Mileage <u>110 RT</u> <u>170.50</u>	Comments <u>---</u>
(G) Final Shut-In <u>1239</u>	<input type="checkbox"/> Sampler <u>---</u>	
(H) Final Hydrostatic <u>2058</u>	<input type="checkbox"/> Straddle <u>---</u>	<input type="checkbox"/> Ruined Shale Packer <u>---</u>

Initial Open 45
 Initial Shut-In 45
 Final Flow 45
 Final Shut-In 45

Shale Packer ---
 Extra Packer ---
 Extra Recorder ---
 Day Standby ---
 Accessibility ---

Sub Total 1745.50

Approved By _____ Our Representative Brannan Lonsdale

Trilobite Testing Inc. shall not be liable for damaged of any kind of the property or personnel of the one for whom a test is made, or for any loss suffered or sustained, directly or indirectly, through the use of its equipment, or its statements or opinion concerning the results of any test, tools lost or damaged in the hole shall be paid for at cost by the party for whom the test is made.