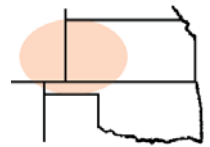




**Pro-Stake LLC**  
*Oil Field & Construction Site Staking*  
 P.O. Box 2324  
 Garden City, Kansas 67846  
 Office/Fax: (620) 276-6159  
 Cell: (620) 272-1499  
 burt@pro-stakellc.kscoxmail.com



**051332L**  
 PLAT NO.

**11651**  
 INVOICE NO.

**Murfin Drilling Company Inc.**

**Kuhn #2-4**

OPERATOR

LEASE NAME

**Logan County, KS**

**4 13s 32w**  
 Sec. Twp. Rng.

**1810' FSL - 1780' FWL**

COUNTY

LOCATION SPOT

SCALE: 1" = 1000'  
 DATE STAKED: Mar. 27<sup>th</sup>, 2014  
 MEASURED BY: Norby S.  
 DRAWN BY: Norby S.  
 AUTHORIZED BY: Shauna G.

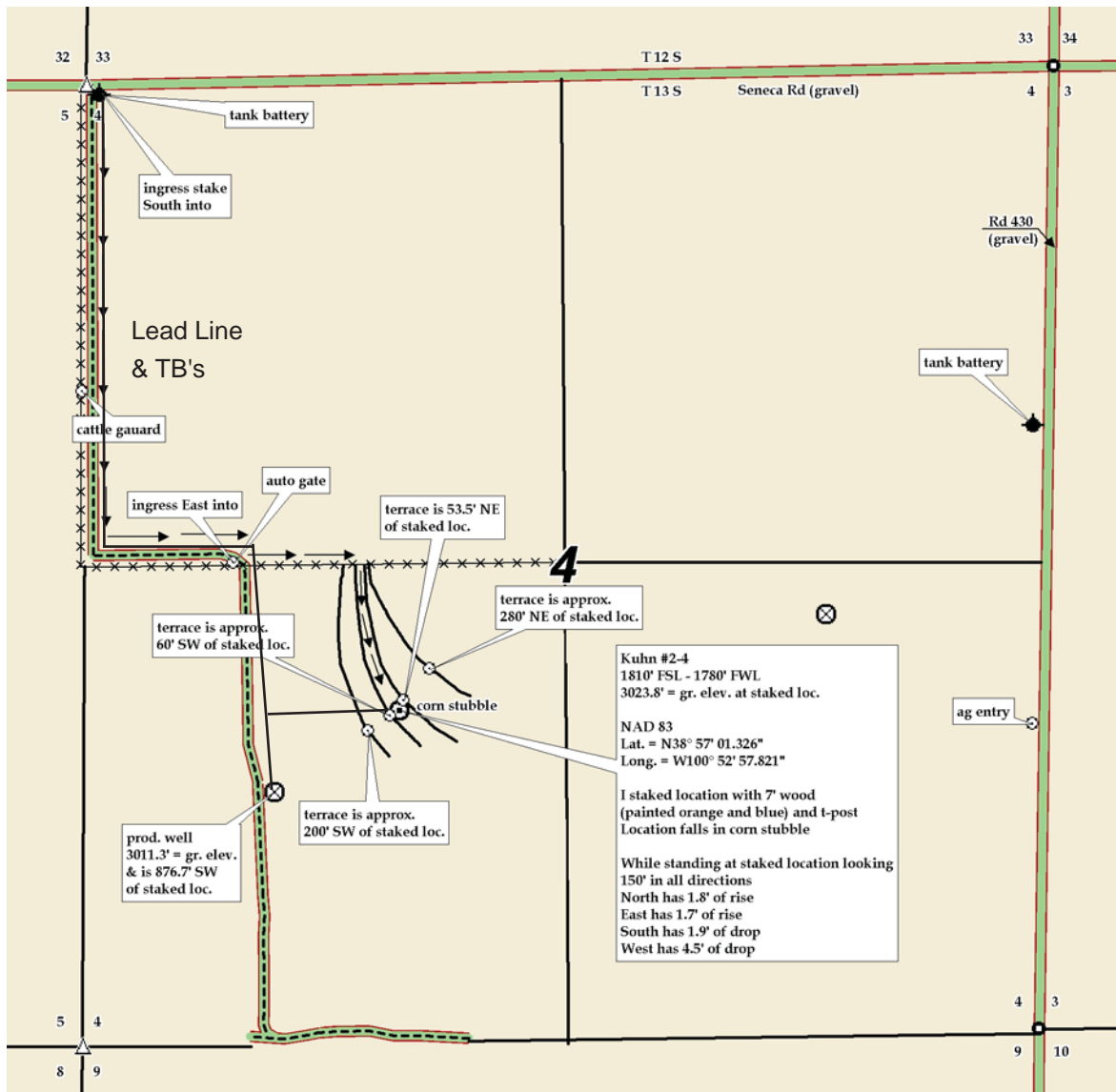


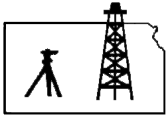
GR. ELEVATION: **3023.8'**

**Directions:** From the SE corner of Oakley, Ks at the intersection of Hwy 40 & Hwy 83 South – Now go 11 miles South on Hwy 83 – Now go 2 miles West on Seneca Rd to the NW corner of section 4-13s-32w & ingress stake South into – Now go 0.5 mile South on trail – Now go 0.2 mile East on trail and ingress East into – Now go approx. 550' East through pasture – Now go approx. 850' South and SE between terraces and through corn stubble, into staked location.

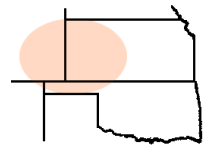
**Final ingress must be verified with land owner or Operator.**

*This drawing does not constitute a monumented survey or a land survey plat.*  
*This drawing is for construction purposes only.*





**Pro-Stake LLC**  
 Oil Field & Construction Site Staking  
 P.O. Box 2324  
 Garden City, Kansas 67846  
 Office/Fax: (620) 276-6159  
 Cell: (620) 272-1499  
 burt@pro-stakellc.kscoxmail.com



**051332L**  
 PLAT NO.

**11651**  
 INVOICE NO.

**Murfin Drilling Company Inc.**

**Kuhn #2-4**

OPERATOR

LEASE NAME

**Logan County, KS**

**4 13s 32w**  
 Sec. Twp. Rng.

**1810' FSL - 1780' FWL**

COUNTY

LOCATION SPOT

SCALE: 1" = 1000'  
 DATE STAKED: Mar. 27<sup>th</sup>, 2014  
 MEASURED BY: Norby S.  
 DRAWN BY: Norby S.  
 AUTHORIZED BY: Shauna G.



GR. ELEVATION: **3023.8'**

**Directions:** From the SE corner of Oakley, Ks at the intersection of Hwy 40 & Hwy 83 South – Now go 11 miles South on Hwy 83 – Now go 2 miles West on Seneca Rd to the NW corner of section 4-13s-32w & ingress stake South into – Now go 0.5 mile South on trail – Now go 0.2 mile East on trail and ingress East into – Now go approx. 550' East through pasture – Now go approx. 850' South and SE between terraces and through corn stubble, into staked location.

***This drawing does not constitute a monumented survey or a land survey plat.***  
***This drawing is for construction purposes only.***

**Final ingress must be verified with land owner or Operator.**

