

## DRILL STEM TEST REPORT

Prepared For: **Great Plains Energy, Inc.**

6121 S 58th St, STE B  
Lincoln, NE 68516

ATTN: Richard Bell

### **Savage #10**

#### **35-4s-30w Decatur,KS**

Start Date: 2014.04.21 @ 05:39:00

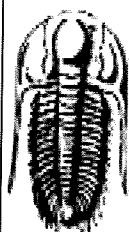
End Date: 2014.04.21 @ 13:09:00

Job Ticket #: 58126                      DST #: 1

Trilobite Testing, Inc  
PO Box 362 Hays, KS 67601  
ph: 785-625-4778 fax: 785-625-5620

Printed: 2014.04.24 @ 14:40:14

Great Plains Energy, Inc.    35-4s-30w Decatur,KS    Savage #10    DST # 1    LKC "C"    2014.04.21



**TRILOBITE  
TESTING, INC.**

## DRILL STEM TEST REPORT

Great Plains Energy, Inc.

6121 S 58th St, STE B  
Lincoln, NE 68516

ATTN: Richard Bell

35-4s-30w Decatur, KS

Savage #10

Job Ticket: 58126

DST#: 1

Test Start: 2014.04.21 @ 05:39:00

### GENERAL INFORMATION:

Formation: **LKC "C"**

Deviated: No Whipstock: ft (KB)

Time Tool Opened: 07:47:00

Time Test Ended: 13:09:00

Test Type: Conventional Bottom Hole (Initial)

Tester: Brandon Quintana

Unit No: 44

Interval: **3953.00 ft (KB) To 3962.00 ft (KB) (TVD)**

Total Depth: 3962.00 ft (KB) (TVD)

Hole Diameter: 7.88 inches Hole Condition: Fair

Reference Elevations: 2850.00 ft (KB)

2845.00 ft (CF)

KB to GR/CF: 5.00 ft

Serial #: 8288

Outside

Press@RunDepth: psig @ 3954.00 ft (KB)

Start Date: 2014.04.21 End Date: 2014.04.21

Start Time: 05:39:05 End Time: 13:08:59

Capacity: 8000.00 psig

Last Calib.: 2014.04.21

Time On Btm:

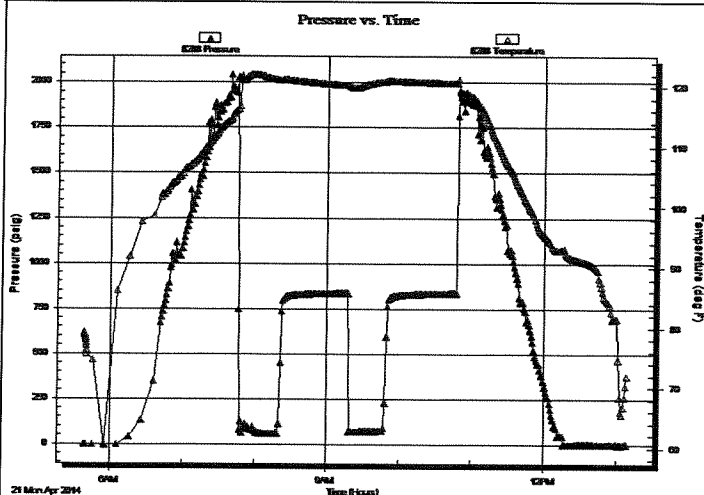
Time Off Btm:

TEST COMMENT: 30 - IF - Opened at 1/2" built to 1 1/2"

60 - ISI - No Return

30 - FF - No Blow

60 - FSI - No Return



### PRESSURE SUMMARY

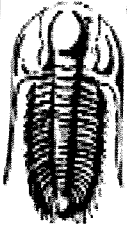
Time (Min.)	Pressure (psig)	Temp (deg F)	Annotation

### Recovery

Length (ft)	Description	Volume (bbl)
90.00	100% m	0.44

### Gas Rates

Choke (inches)	Pressure (psig)	Gas Rate (Mcf/d)



**TRILOBITE  
TESTING, INC.**

# DRILL STEM TEST REPORT

**FLUID SUMMARY**

Great Plains Energy, Inc.

**35-4s-30w Decatur,KS**

6121 S 58th St, STE B  
Lincoln, NE 68516

**Savage #10**

Job Ticket: 58126

**DST#: 1**

ATTN: Richard Bell

Test Start: 2014.04.21 @ 05:39:00

## Mud and Cushion Information

Mud Type: Gel Chem	Cushion Type:	Oil API:	deg API
Mud Weight: 9.00 lb/gal	Cushion Length: ft	Water Salinity:	ppm
Viscosity: 64.00 sec/qt	Cushion Volume: bbl		
Water Loss: 6.39 in <sup>3</sup>	Gas Cushion Type:		
Resistivity: 0.00 ohm.m	Gas Cushion Pressure: psig		
Salinity: 1700.00 ppm			
Filter Cake: 2.00 inches			

## Recovery Information

Recovery Table

Length ft	Description	Volume bbl
90.00	100%m	0.443

Total Length: 90.00 ft      Total Volume: 0.443 bbl

Num Fluid Samples: 0

Num Gas Bombs: 0

Serial #:

Laboratory Name:

Laboratory Location:

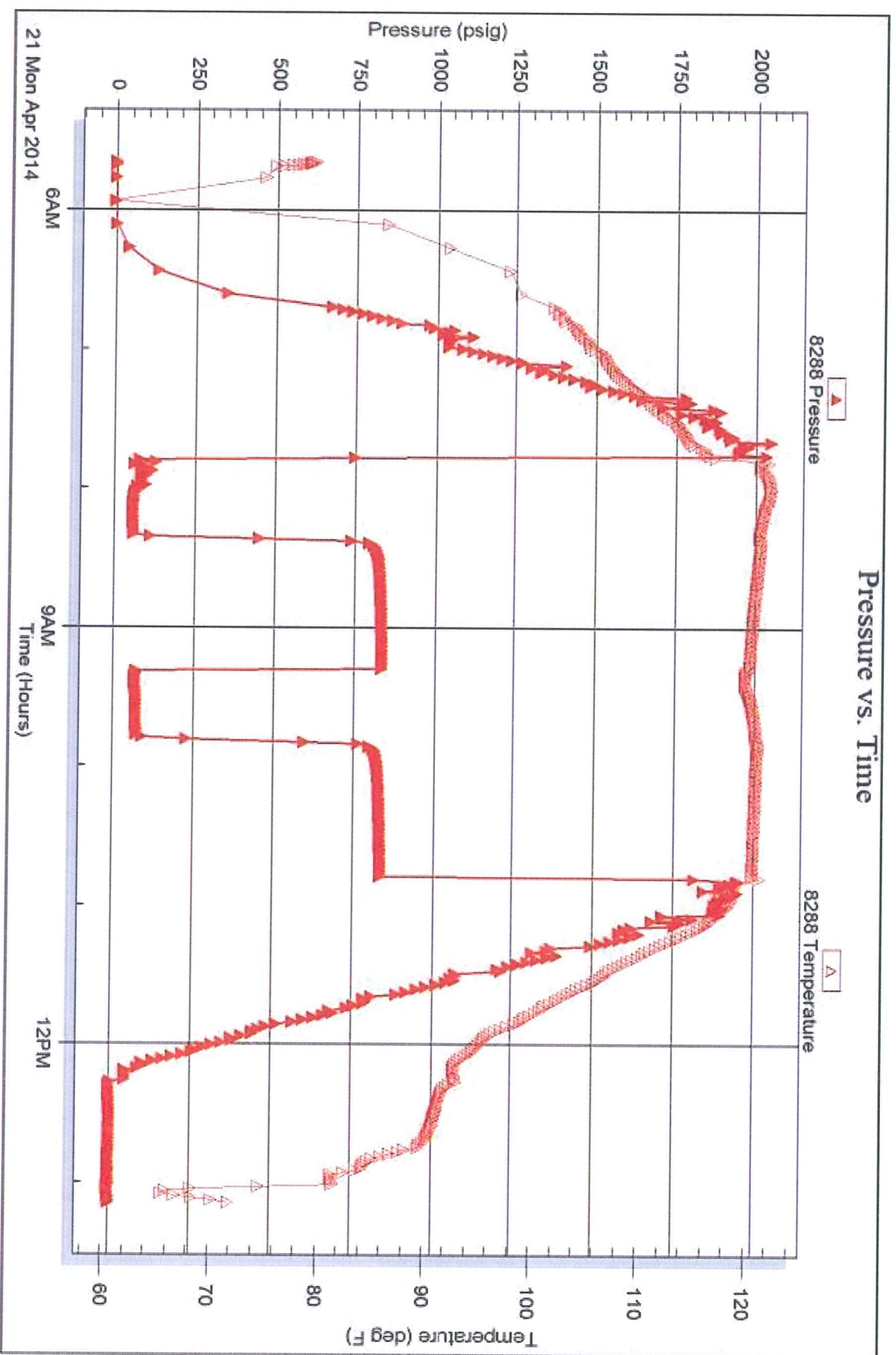
Recovery Comments:

Serial #: 8288

Outside Great Plains Energy, Inc.

Savage #10

DST Test Number: 1



Tribble Testing, Inc

Ref. No: 58126

Printed: 2014.04.24 @ 14:40:15