

GEOLOGICAL REPORT

DRILLING TIME AND SAMPLE LOG

COMPANY Great Plains Energy, Inc.
 LEASE Savage # 10
 FIELD Swede Hollow
 LOCATION 1400' ENL + 1290' FEL
 SEC 35 TWSP 4s RGE 30w
 COUNTY Decatur STATE Kansas

ELEVATION
 KB 2850'
 DF 2848'
 GL 2845'
 Depths Measured From
 Log KB Drilling KB

CONTRACTOR WW Drilling Rig # 4
 SPUD 4-16-14 COMP 4-23-14
 SAMPLES SAVED FROM 3400' TO R.T.D

CASING
 Surface 8 5/8" @ 260'
 Production 5 1/2"
 ELECTRIC LOGS
Nabors

FORMATION TOPS AND STRUCTURAL POSITION

FORMATION	SAMPLE	E. LOG	DATUM	A	B	C	D
Anhydrite	2605	2603	+ 247	+ 240	+ 242	+ 240	
Base Anhydrite	2639	2636	+ 214	+ 206	+ 208	+ 207	
Topoka	3707	3705	- 855	- 865	- 864	- 864	
Heebner	3876	3875	- 1025	- 1034	- 1032	- 1031	
Tarcata	3910	3909	- 1059	- 1067	- 1065	- 1066	
Lansing	3924	3923	- 1073	- 1081	- 1078	- 1082	
Base Kansas City	4130	4129	- 1279	- 1286	- 1287	- 1288	
Pawnee	4268	4267	- 1417				
Total Depth	4295	4296	- 1446	- 1347	- 1360	- 1349	

REFERENCE WELLS

A	G.P.E. Inc. Savage #1	915' ENL + 335' FEL	Sec. 35-45-30w
B	G.P.E. Inc. Savage #5	460' ENL + 890' FEL	Sec. 35-45-30w
C	G.P.E. Inc. Savage #6	2260' ENL + 1680' FEL	Sec. 35-45-30w
D			

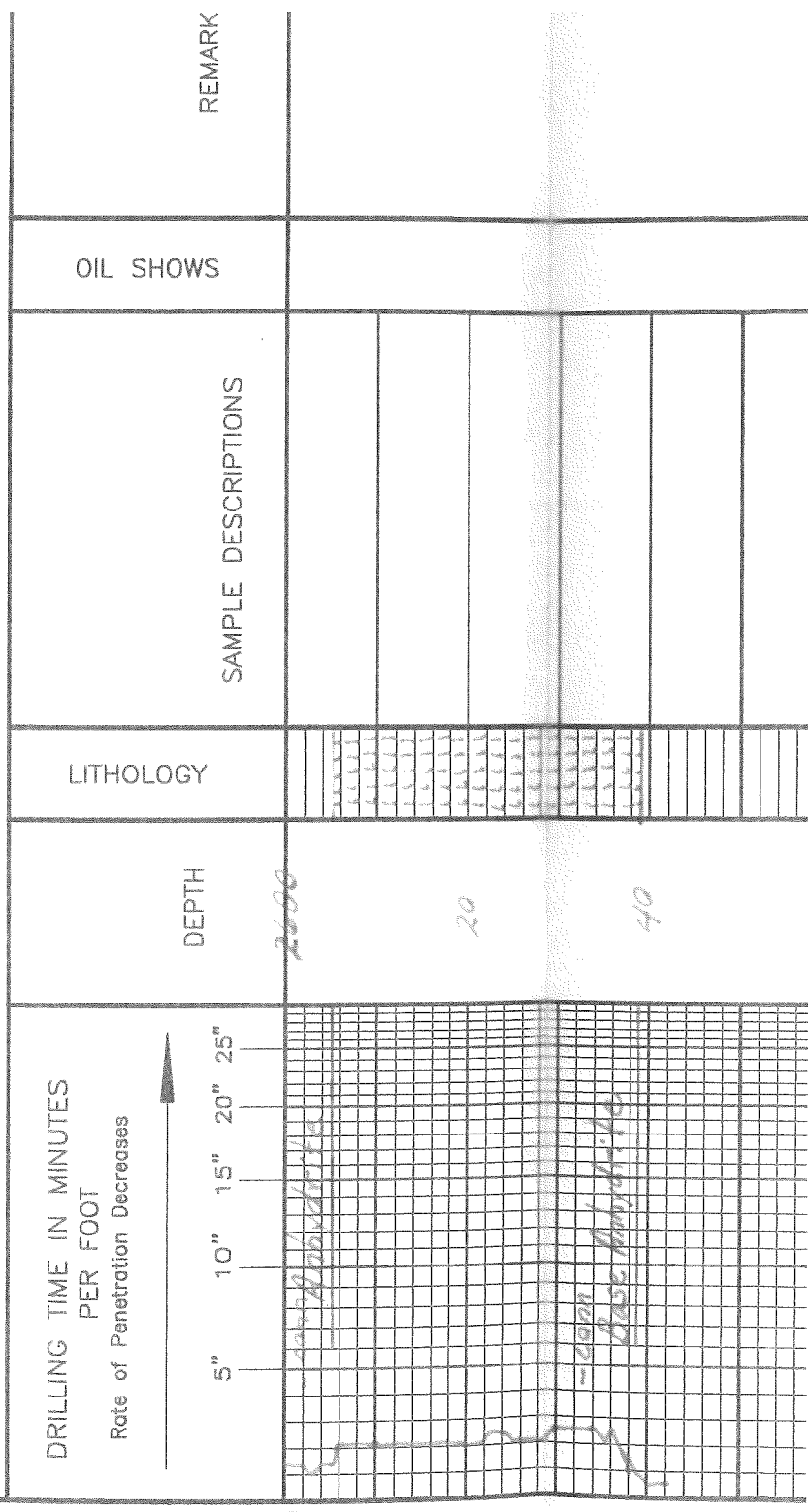
REMARKS

This well can 5 to 9 feet higher on the casing top than the reference well.
 Production casing was cemented with the intent to use as an injection well.
 The following zones should be tested: 3909'-3911'; 3991'-3994'; 4001'-4005' and
 4096'-4099'.
 drilled to depth
 4/23/14

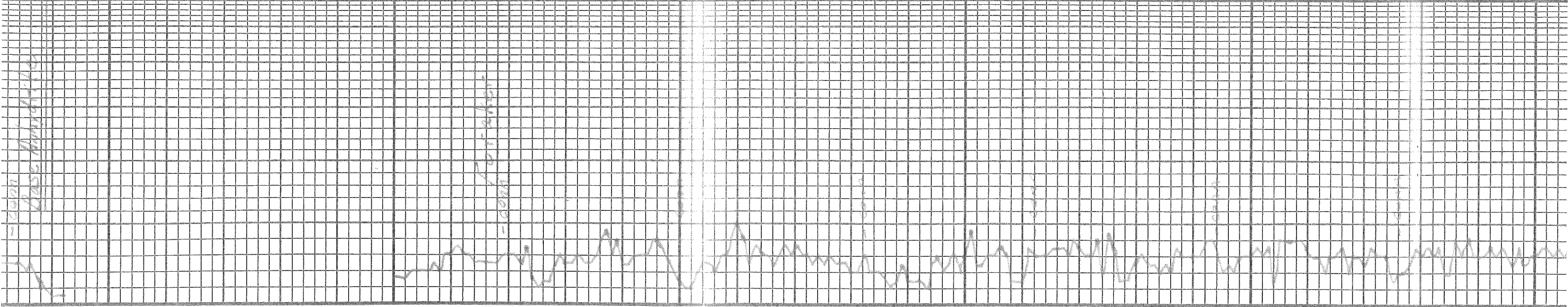
7502

LEGEND

- Dolomite
- Chert
- Ool. Lime
- Limestone
- Carb sh
- Shale
- Sandstone
- Salt
- Anhydrite

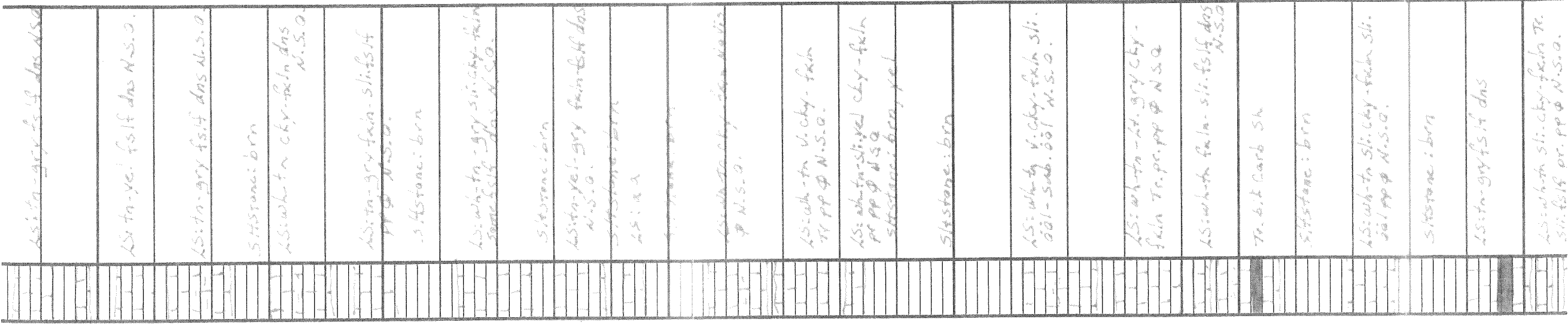
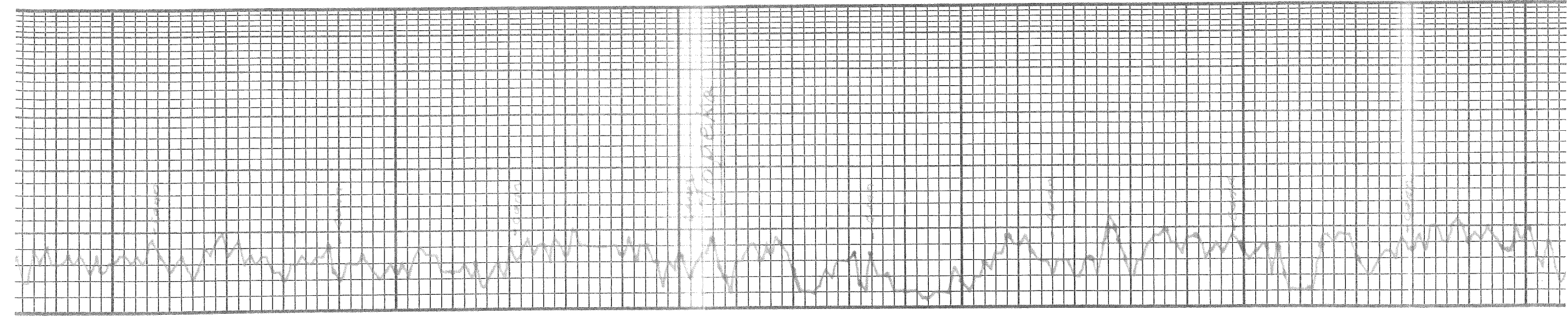


LOG 7710



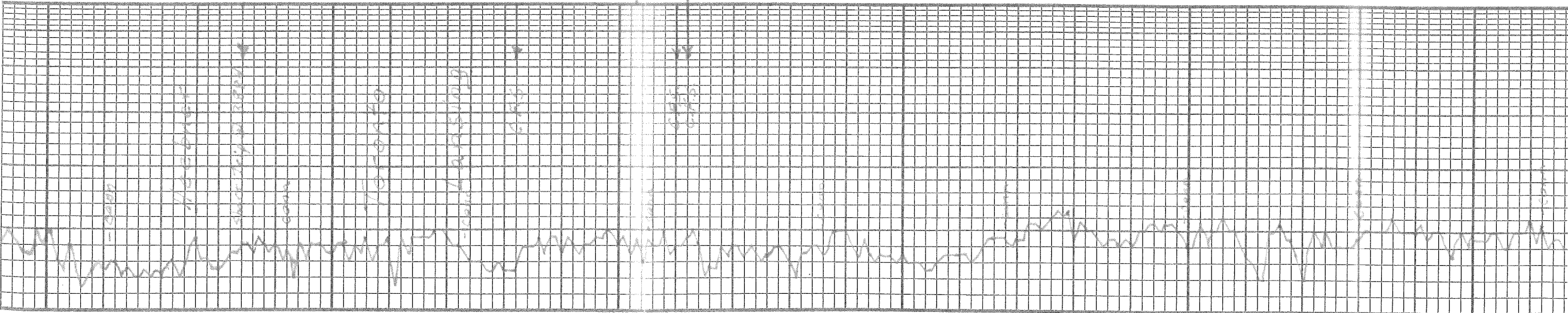
40	
3400	Siltstone: brn + gry
30	LS: wk-fn-gry chy-fsif mly PPP N.S.G. no cont
90	LS: aa deer. chy
	Q.A. Tr A gry
	LS: wk-fn-gry chy-fsif PPP N.S.G.
60	LS: m. gry mald fsif das
80	Siltstone: gry
	Siltstone: brn
3600	LS: wk-fn-gry chy-fsif das
	Siltstone: brn
	LS: wk-fn-gry chy-fsif das N.S.G.
20	LS: aa siltstone: brn
70	LS: wk-fn-gry chy-fsif das
	Siltstone: brn
	LS: shly brn
60	Siltstone: gry
80	LS: gry mald fsif das
80	LS: wk-fn-gry chy-fsif das das
	Siltstone: gry
3600	LS: wk-fn-gry chy-fsif das das

Samples are / good Sampl



3600
 20
 40
 60
 80
 3700
 20
 40
 60
 80
 3800
 20
 40

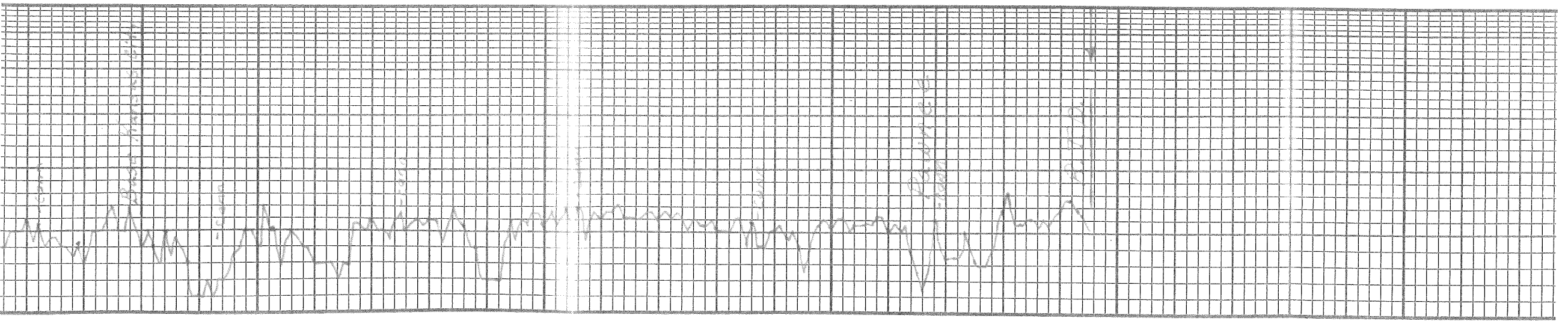
LS: tan - gry fsif dms N.S.O.
 LS: tan - ye! fsif dms N.S.O.
 LS: tan - gry fsif dms N.S.O.
 Siltstone: brn
 LS: wh - tn chy - fahn dms N.S.O.
 LS: wh - tn - gry silt chy - fahn
 Siltstone: brn
 LS: tan - ye! - gry fahn - fahn dms
 N.S.O.
 Siltstone: brn
 LS: a a
 Siltstone: brn
 LS: wh - tn v. chy - fahn
 Tr. pp. N.S.O.
 LS: wh - tn - silt - chy - fahn
 Tr. pp. N.S.O.
 Siltstone: brn, ye!
 Siltstone: brn
 LS: wh - tn v. chy - fahn sli.
 oil - sub. oil N.S.O.
 LS: wh - tn - sh. gry chy -
 fahn Tr. pp. N.S.O.
 LS: wh - tn fahn - silt fsif dms
 N.S.O.
 Tr. bit carb sh
 Siltstone: brn
 LS: wh - tn sli. chy - fahn sli.
 Tr. pp. N.S.O.
 Siltstone: brn
 LS: tan - gry fsif dms
 LS: wh - tn sli. chy - fahn Tr.
 silt fahn Tr. pp. N.S.O.



60	LS: wh-tn sli. chy-fain Tr. sli. fslf pr. pp N.S.O.	LS: wh-tn sli. chy-fain Tr. sli. fslf pr. pp N.S.O.
80	LS: wh-tn v. chy-fain ölöl pp N.S.O.	Shi. Bk Carb
3900		LS: tn-gry fslf dn
20		Sltstone: brn
40		LS: wh-tn sli. chy-fain Tr. pp edgey Tr. f. sptd. 0.5tn Tr. pp Ea. No odor
80		LS: tn-fain tr. isol. Vias Tr. pp f.o. Sltstone: brn
7000		LS: wh-tn chy-fain Tr. sli. ölöl pp f. sptd. 0.5tn Tr. pp Ea. No odor
20		LS: wh-tn chy-fain Tr. sli. ölöl pp f. sptd. 0.5tn Tr. pp Ea. No odor
30		LS: tn-fain v. chy-fain Tr. sli. ölöl pp f. sptd. 0.5tn Tr. pp Ea. No odor
4100		LS: wh-tn chy-fain Tr. sli. ölöl pp f. sptd. 0.5tn Tr. pp Ea. No odor

Trilobite Tes
 DST #1 395.
 30-60-30-
 Sld 5' to bot
 IF: wk blow jar.
 ISI: No blow
 FF: No blow
 FSI: No blow
 Recovery: 90'
 HYD: 2027-11
 FP: 64-62/70
 BHP: 841-83
 BHTemp: 1200

Strap 3988
 Board 3986
 Diff.



20	Sitronci ben	20	Sitronci ben
40	LS: th- gry fain ds. N.S.B.	40	Sitronci ben
60	Sitronci ben	60	Sitronci ben
80	LS: th- gry fain ds. N.S.B.	80	Sitronci ben
1200	Sitronci ben	1200	Sitronci ben
20	Sitronci ben	20	Sitronci ben
40	Sitronci ben	40	Sitronci ben
60	Sitronci ben	60	Sitronci ben
80	Sitronci ben	80	Sitronci ben
4300	Sitronci ben	4300	Sitronci ben

This section contains handwritten notes and a small diagram. The notes are written in Indonesian and appear to be related to the waveform above. There is a small diagram consisting of a series of vertical lines of varying heights, resembling a bar chart or a simplified waveform.