



**TRILOBITE  
TESTING, INC**

# DRILL STEM TEST REPORT

Shakespeare Oil Co. INC,

**4-16s-34w Scott county**

202 W Main ST  
Salem IL, 62881

**McDaniel 1-4**

Job Ticket: 57479

**DST#: 1**

ATTN: Tim Priest

Test Start: 2014.10.07 @ 21:31:00

## GENERAL INFORMATION:

Formation: " I "

Deviated: No Whipstock: 0.00 ft (KB)

Time Tool Opened: 00:20:00

Time Test Ended: 04:40:45

Test Type: Conventional Bottom Hole (Initial)

Tester: Justin Harris

Unit No: 71

**Interval: 4249.00 ft (KB) To 4290.00 ft (KB) (TVD)**

Reference Elevations: 3144.00 ft (KB)

Total Depth: 4290.00 ft (KB) (TVD)

3136.00 ft (CF)

Hole Diameter: 7.88 inches Hole Condition: Poor

KB to GR/CF: 8.00 ft

**Serial #: 8674 Inside**

Press@RunDepth: 18.62 psig @ 4282.00 ft (KB)

Capacity: 8000.00 psig

Start Date: 2014.10.07

End Date:

2014.10.08

Last Calib.: 2014.10.08

Start Time: 21:31:05

End Time:

04:40:44

Time On Btm: 2014.10.08 @ 00:19:45

Time Off Btm: 2014.10.08 @ 02:20:45

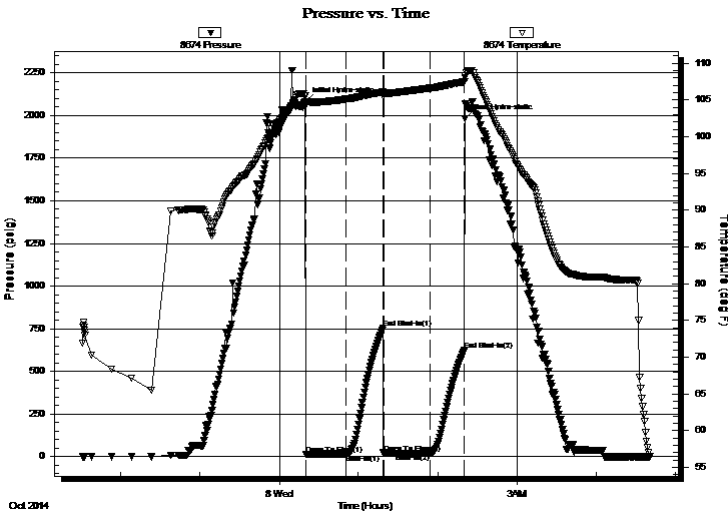
TEST COMMENT: 30: Weak blow died in 4 mins.

30: No Return.

30: No Blow .

30: No Return.

## PRESSURE SUMMARY



Time (Min.)	Pressure (psig)	Temp (deg F)	Annotation
0	2083.57	105.53	Initial Hydro-static
1	14.57	104.22	Open To Flow (1)
31	16.89	105.12	Shut-In(1)
59	752.68	106.10	End Shut-In(1)
60	18.32	105.80	Open To Flow (2)
95	18.62	106.61	Shut-In(2)
121	622.22	107.47	End Shut-In(2)
121	1981.70	108.02	Final Hydro-static

## Recovery

Length (ft)	Description	Volume (bbl)
5.00	Mud	0.02

## Gas Rates

	Choke (inches)	Pressure (psig)	Gas Rate (Mcf/d)



**TRILOBITE  
TESTING, INC**

# DRILL STEM TEST REPORT

## FLUID SUMMARY

Shakespeare Oil Co. INC,

**4-16s-34w Scott county**

202 W Main ST  
Salem IL, 62881

**McDaniel 1-4**

Job Ticket: 57479

**DST#: 1**

ATTN: Tim Priest

Test Start: 2014.10.07 @ 21:31:00

### Mud and Cushion Information

Mud Type: Gel Chem

Cushion Type:

Oil API:

0 deg API

Mud Weight: 9.00 lb/gal

Cushion Length:

ft

Water Salinity:

0 ppm

Viscosity: 47.00 sec/qt

Cushion Volume:

bbf

Water Loss: 8.79 in<sup>3</sup>

Gas Cushion Type:

Resistivity: ohm.m

Gas Cushion Pressure:

psig

Salinity: 3300.00 ppm

Filter Cake: 1.00 inches

### Recovery Information

Recovery Table

Length ft	Description	Volume bbf
5.00	Mud	0.025

Total Length: 5.00 ft      Total Volume: 0.025 bbf

Num Fluid Samples: 0

Num Gas Bombs: 0

Serial #:

Laboratory Name:

Laboratory Location:

Recovery Comments:

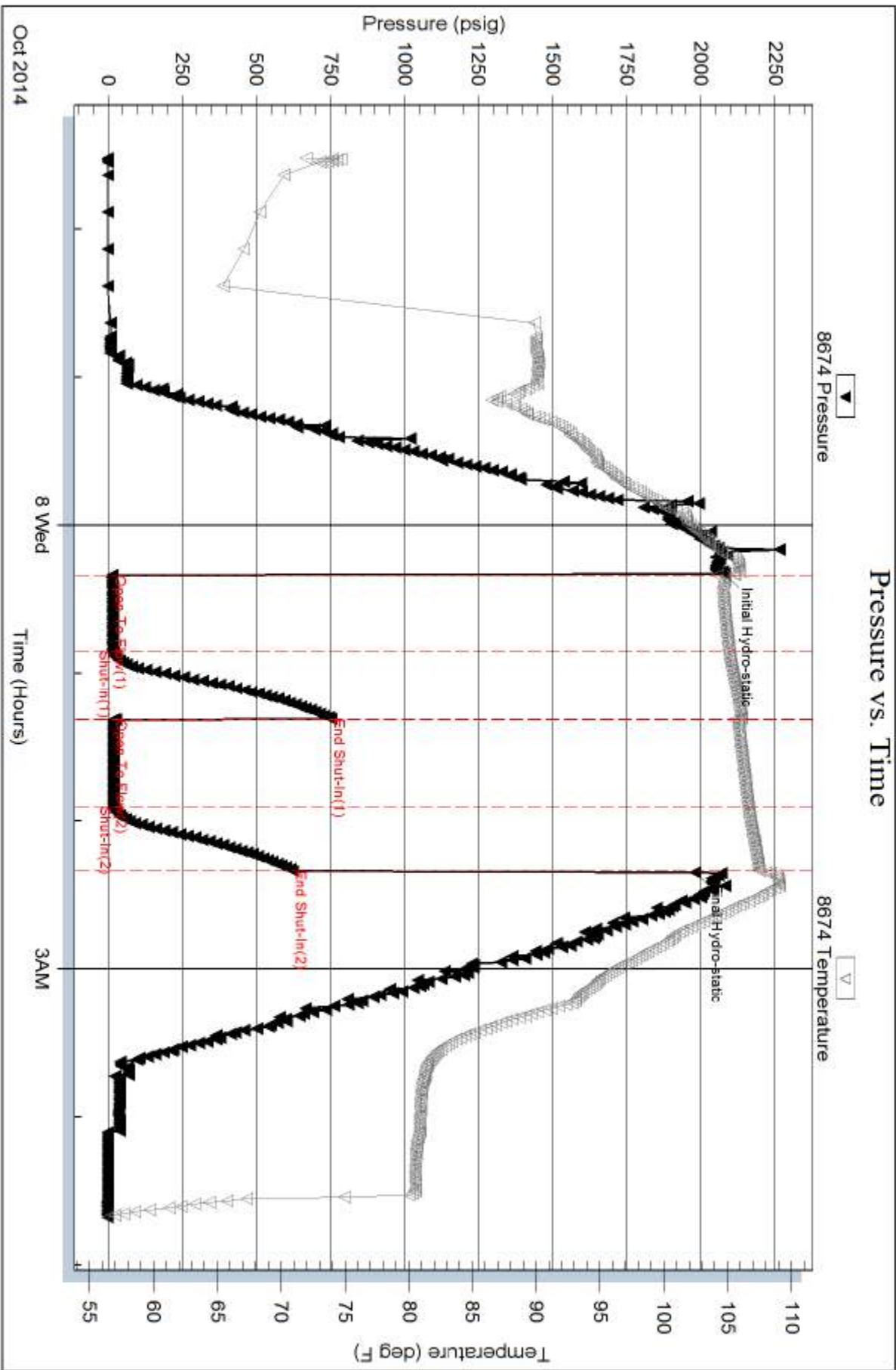
Serial #: 8674

Inside

Shakespeare Oil Co. INC.

McDaniel 1-4

DST Test Number: 1



Trilobite Testing, Inc

Ref. No: 57479

Printed: 2014, 10:08 @ 10:04:17