

TRILOBITE TESTING, INC.

DRILL STEM TEST REPORT

Bickle Energies

19-17S-9W Ellsworth

2052 250th Ave
Hays, KS 67601

Rekker 19-1

Job Ticket: 58985

DST#: 2

ATTN: Eli Felts/Keaton Jon

Test Start: 2014.04.30 @ 11:55:54

GENERAL INFORMATION:

Formation: **Arbuckle**

Deviated: No Whipstock: ft (KB)

Time Tool Opened: 13:03:54

Time Test Ended: 16:57:24

Test Type: Conventional Bottom Hole (Reset)

Tester: Leal Cason

Unit No: 74

Interval: 3237.00 ft (KB) To 3256.00 ft (KB) (TVD)

Reference Elevations: 1779.00 ft (KB)

Total Depth: 3256.00 ft (KB) (TVD)

1774.00 ft (CF)

Hole Diameter: 7.88 inches Hole Condition: Good

KB to GR/CF: 5.00 ft

Serial #: 6798

Inside

Press@RunDepth: 1129.99 psig @ 3238.00 ft (KB)

Capacity: 8000.00 psig

Start Date: 2014.04.30

End Date:

2014.04.30

Last Calib.:

2014.04.30

Start Time: 11:55:54

End Time:

16:57:24

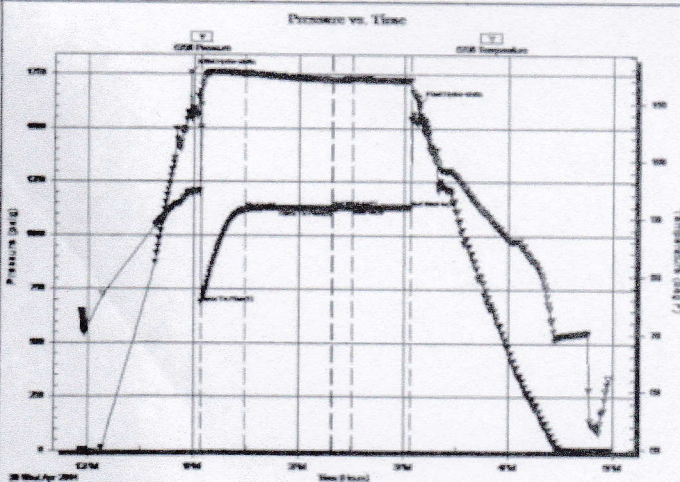
Time On Btm:

2014.04.30 @ 12:58:09

Time Off Btm:

2014.04.30 @ 15:08:24

TEST COMMENT: IF: Strong Blow, BOB in 30 seconds
IS: No Blow Back
FF: Fair to Weak Blow, Built to 10 inches, Died Off to 4 inches
FS: No Blow Back



PRESSURE SUMMARY

Time (Min.)	Pressure (psig)	Temp (deg F)	Annotation
0	1755.79	94.57	Initial Hydro-static
6	683.08	105.66	Open To Flow (1)
31	1119.40	115.01	Shut-in(1)
81	1129.67	114.02	End Shut-in(1)
81	1121.36	114.01	Open To Flow (2)
93	1129.99	114.11	Shut-in(2)
126	1130.40	113.89	End Shut-in(2)
131	1611.98	109.97	Final Hydro-static

Recovery

Length (ft)	Description	Volume (bbl)
868.00	Water	12.18
1736.00	SOCW 1%O 99%W	24.35
268.00	MCW 32%M 68%W	3.76

* Recovery from multiple tests

Gas Rates

	Choke (inches)	Pressure (psig)	Gas Rate (Mcf/d)



**TRILOBITE
TESTING, INC.**

DRILL STEM TEST REPORT

Bickle Energies
2052 250th Ave
Hays, KS 67601
ATTN: Eli Felts/Keaton Jon

19-17S-9W Ellsworth
Rekker 19-1
Job Ticket: 58984 DST#: 1
Test Start: 2014.04.29 @ 22:06:05

GENERAL INFORMATION:

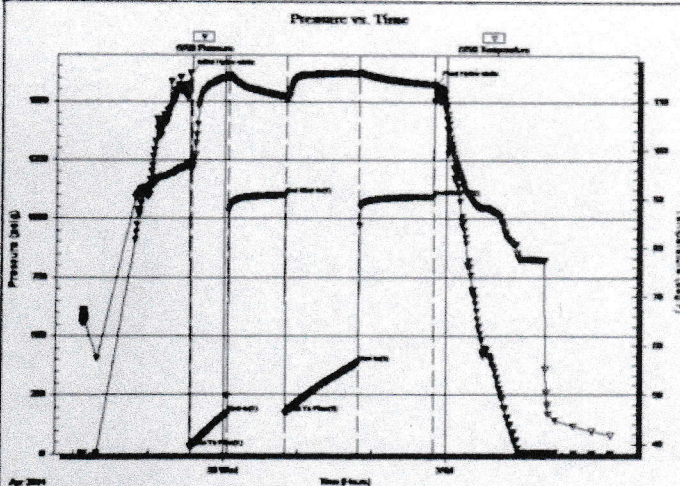
Formation: **Arbuckle**
Deviated: No Whipstock: ft (KB)
Time Tool Opened: 23:33:20
Time Test Ended: 05:23:50
Interval: **3190.00 ft (KB) To 3226.00 ft (KB) (TVD)**
Total Depth: 3226.00 ft (KB) (TVD)
Hole Diameter: 7.88 inches Hole Condition: Good
Test Type: Conventional Bottom Hole (Initial)
Tester: Leal Cason
Unit No: 74
Reference Elevations: 1779.00 ft (KB)
1774.00 ft (CF)
KB to GR/CF: 5.00 ft

Serial #: 6798

Inside

Press@RunDepth: 385.91 psig @ 3191.00 ft (KB) Capacity: 8000.00 psig
Start Date: 2014.04.29 End Date: 2014.04.30 Last Calib.: 2014.04.30
Start Time: 22:06:05 End Time: 05:23:50 Time On Btm: 2014.04.29 @ 23:32:20
Time Off Btm: 2014.04.30 @ 02:50:50

TEST COMMENT: F: Fair Blow, BOB in 9 minutes
IS: No Blow Back
FF: Fair Blow, BOB in 11 minutes
FS: No Blow Back



PRESSURE SUMMARY

Time (Min.)	Pressure (psig)	Temp (deg F)	Annotation
0	1619.49	97.01	Initial Hydro-static
1	25.99	96.53	Open To Flow (1)
31	169.98	114.86	Shut-in(1)
78	1101.14	110.83	End Shut-in(1)
78	172.39	110.31	Open To Flow (2)
137	385.91	115.56	Shut-in(2)
198	1094.86	113.33	End Shut-in(2)
199	1574.91	112.96	Final Hydro-static

Recovery

Length (ft)	Description	Volume (bbl)
431.00	MCW 5%M 95%W	6.05
325.00	MCW 48%M 52%W	4.56

Gas Rates

	Choke (inches)	Pressure (psig)	Gas Rate (Mcf/d)