

Robert D. Hendrix

Petroleum Geologist

GEOLOGIST'S REPORT

DRILLING TIME AND SAMPLE LOG

COMPANY **Murfin Drilling Company Inc.**

LEASE **Burk 'E' #1-14**

FIELD **Wildcat**

LOCATION **3307sl & 13207fwl**

SEC **14** TWP **S1** RGE **S6w**

COUNTY **Rawlins** STATE **Kansas**

CONTRACTOR **Murfin Drilling Co. Inc. Rig #2**

SPUD **7/1/2014** COMP **7/8/2014**

RTD **4614'** LTD **4614'**

MUD UP **3348'** TYPE MUD **Chemical**

SAMPLES SAVED FROM **3600'** TO **TD**

DRILLING TIME KEPT FROM **3600'** TO **TD**

SAMPLES EXAMINED FROM **3600'** TO **TD**

GEOLOGICAL SUPERVISION FROM **3600'**

GEOLOGIST ON WELL **Robert D. Hendrix**

FORMATION TOPS

ANHYDRITE **3218 (-91)**

NEVA **3708 (-399)**

FORAKER **3816 (-507)**

TOPEKA **4033 (-724)**

OREAD **4247 (-938)**

LANSING **4414 (-1162)**

STARK SHALE **4514 (-1205)**

BKC **4514 (-1205)**

KB **3309'**

DF _____

GL **3298'**

Measurements Are All From **Kelly Bushing**

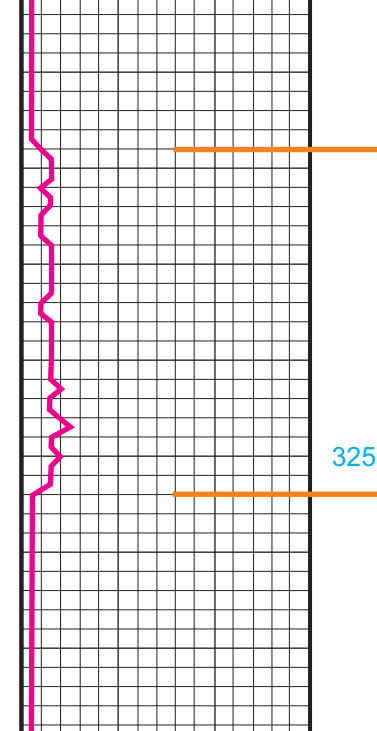
CASING _____

CONDUCTOR _____

SURFACE **8.18" at 295'**

PRODUCTION **5.12" @ 4610'**

FORMATION TOPS	ELECTRIC LOG	SAMPLE
Anhydrite	3218 (-91)	3218 (-91)
Neva	3708 (-399)	3708 (-399)
Foraker	3816 (-507)	3816 (-507)
Topoka	4033 (-724)	4033 (-724)
Oread	4247 (-938)	4247 (-938)
Lansing	4414 (-1162)	4414 (-1162)
Stark Shale	4514 (-1205)	4514 (-1205)
BKC	4514 (-1205)	4514 (-1205)



REMARKS:

