

WELL INFORMATION

Company: RITCHIE EXPLORATION INC.
Address: P.O.BOX 783188, WICHITA, KS, 67278-3188
316-691-9500

Well Name: #1 JAMES TRUST 8AD

Location: 335' FSL, 1430' FEL
SEC. 8-T16S-R28W
LANE COUNTY, KANSAS

API: 15-101-22530-0000
Field: WILDCAT

K.B. Elevation: 2667 KB Rotary Depth: 4519
Ground Elevation: 2662 GL Log Depth: 4518

Spud Date: 7/19/2014 Drilling Completed: 7/29/2014

Completion: D&A
Formation at TD: MISSISSIPPIAN
Drilling Fluid Type: CHEMICAL

Surface Casing: 8 5/8" SET AT 260' Production Casing: NONE

Rig Contractor: WW DRILLING, LLC, Rig #8
Logger: NABORS Logs Run: CND, DI
Wellsite Geologist: LARRY FRIEND

FORMATION DEPTHS

COMPARED TO:
CORAL PRODUCTION CORP.
JOE BOB JAMES TRUST 8-1
NE SE SE, 8-T16S-R28W (10/19/2007)

FORMATION DEPTHS	SAMPLE	LOG	
ANHYDRITE	2069 (+598)	2068 (+599)	-3
BS. ANHYDRITE	N/A	2102 (+565)	-4
STOTLER	3439 (-772)	3438 (-771)	-1
HEEBNER	3830 (-1163)	3828 (-1161)	+2
TORONTO	3850 (-1183)	3849 (-1182)	+1
LANSING	3869 (-1202)	3866 (-1199)	FLAT
MUNCIE CREEK SH.	4020 (-1353)	4019 (-1352)	+5
STARK SHALE	4107 (-1440)	4106 (-1439)	+5
HUSHPUCKNEY SH.	4148 (-1481)	4146 (-1479)	+3
BS. KANSAS CITY	4189 (-1522)	4187 (-1520)	+2
MARMATON	4210 (-1543)	4208 (-1541)	+4
"PAWNEE"	4291 (-1624)	4289 (-1622)	+2
"FT. SCOTT"	4370 (-1703)	4367 (-1700)	+2
"CHEROKEE"	4392 (-1725)	4390 (-1723)	+1
"JOHNSON ZONE"	4433 (-1766)	4431 (-1764)	FLAT
MISSISSIPPIAN	4459 (-1792)	4457 (-1790)	+5

NOTES

DUE TO NEGATIVE DRILLSTEM TEST RESULTS, IT WAS DECIDED TO PLUG AND ABANDON THE #1 JAMES TRUST 8AD.

LARRY P. FRIEND

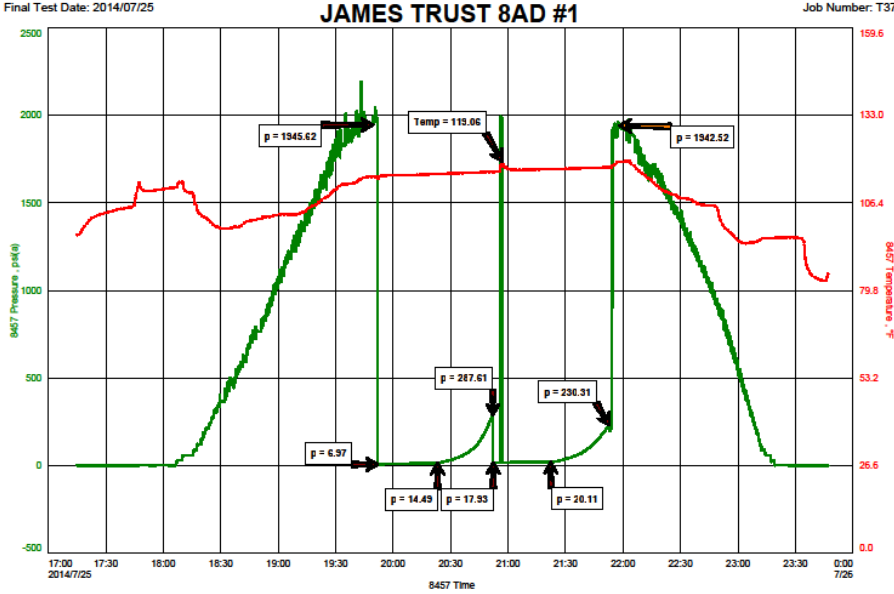
DRILLSTEM TESTS

No	Interval	Formation
1	4105 - 4123	KC "K" ZONE
2	4179 - 4276	MARMATON
3	4287 - 4308	"PAWNEE"
4	4348 - 4391	FT. SCOTT
5	4015 - 4045 STRADDLE	LANSING " G' " ZONE

DST #1 CHART

RITCHIE EXPLORATION, INC.
 DST #1, LKC "K", 4105-4123
 Start Test Date: 2014/07/25
 Final Test Date: 2014/07/25

JAMES TRUST 8AD #1
 Formation: DST #1, LKC "K", 4105-4123
 Pool: WILDCAT
 Job Number: T371



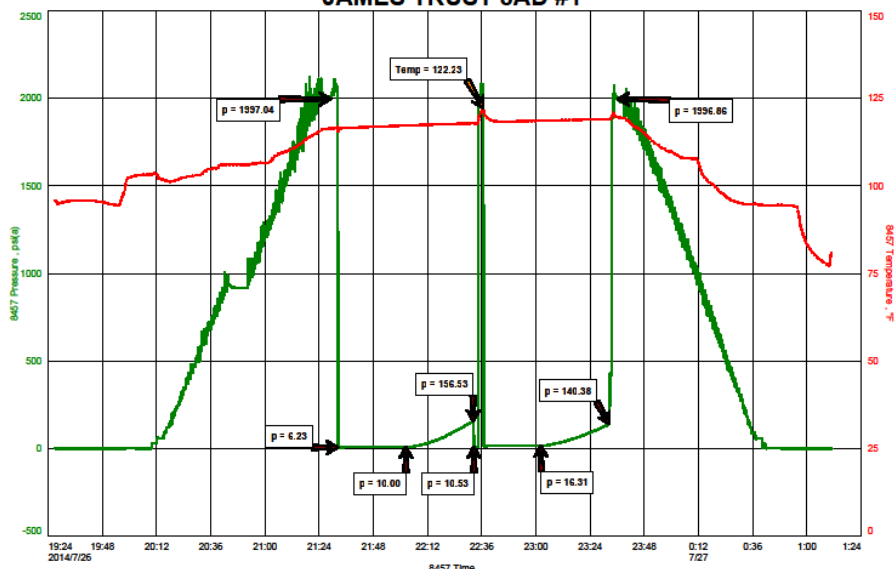
C:\New\logp_8\Desktop\DR-Data\JAMES\TRUST\8AD\1\DKT 26-34-14.Vir

Fast

DST #2 CHART

RITCHIE EXPLORATION, INC.
 DST #2, MARMATON, 4179-4276
 Start Test Date: 2014/07/26
 Final Test Date: 2014/07/27

JAMES TRUST 8AD #1
 Formation: DST #2, MARMATON, 4179-4276
 Pool: WILDCAT
 Job Number: T372

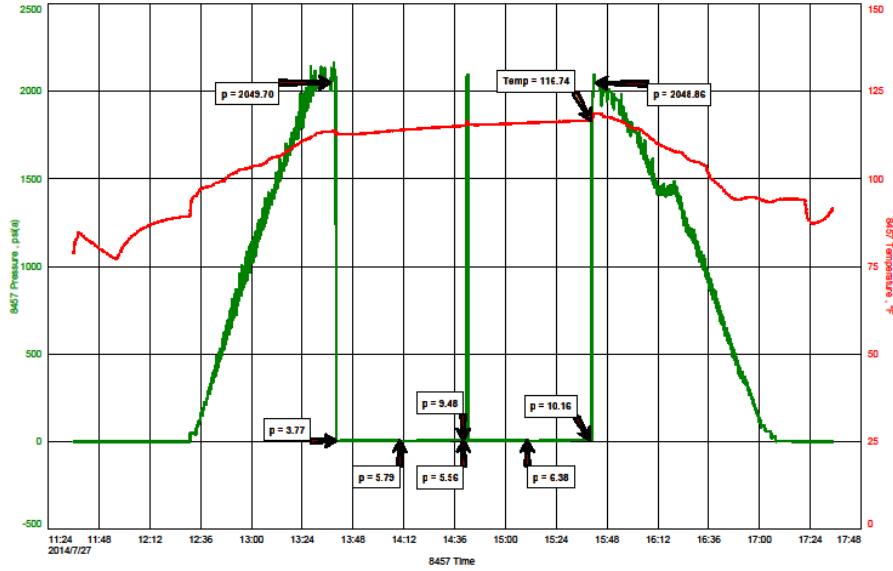


DST #3 CHART

RITCHIE EXPLORATION, INC.
DST #3, PAWNEE, 4287-4308
Start Test Date: 2014/07/27
Final Test Date: 2014/07/27

JAMES TRUST 8AD #1
Formation: DST #3, PAWNEE, 4287-4308
Pool: WILDCAT
Job Number: T373

JAMES TRUST 8AD #1

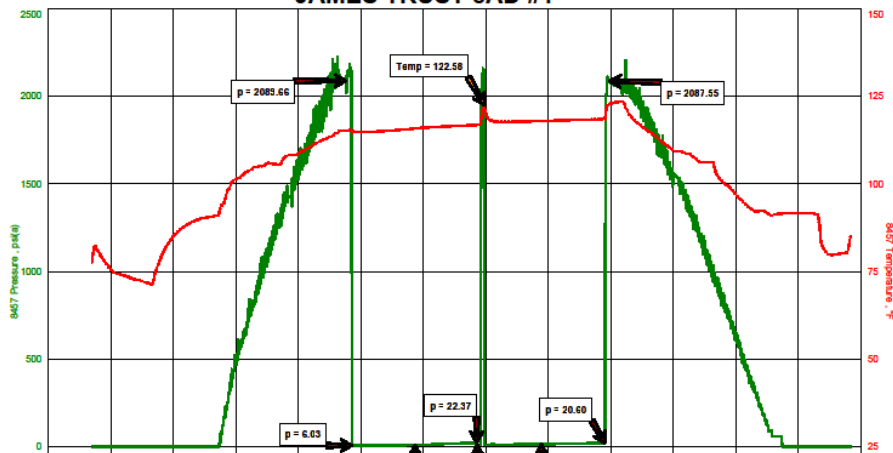


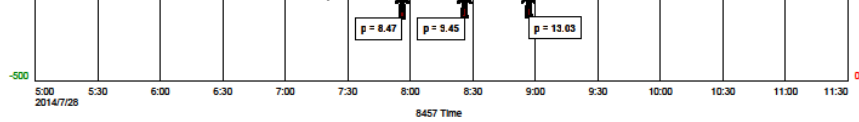
DST #4 CHART

RITCHIE EXPLORATION, INC.
DST #4, FT. SCOTT, 4348-4391
Start Test Date: 2014/07/28
Final Test Date: 2014/07/28

JAMES TRUST 8AD #1
Formation: DST #4, FT. SCOTT, 4348-4391
Pool: WILDCAT
Job Number: T374

JAMES TRUST 8AD #1





C:\New\Roger_S\Desktop\DRS-Stem\JAMES TRUST 8AD\105T4.FKT 28-Jul-14 Vw

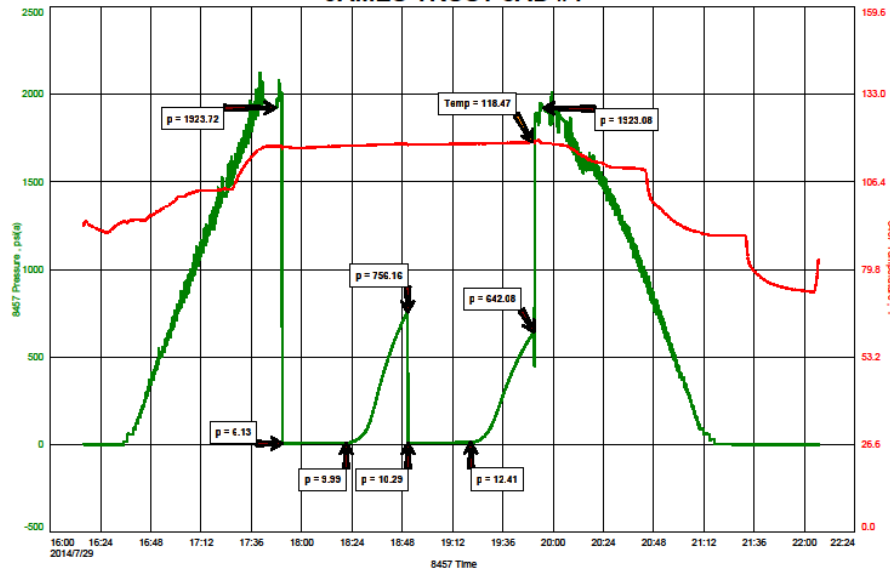
Fast

DST #5 CHART

RITCHIE EXPLORATION, INC.
DST #5, LKC "H", 4015-4045
Start Test Date: 2014/07/29
Final Test Date: 2014/07/29

JAMES TRUST 8AD #1
Formation: DST #5, LKC "H", 4015-4045
Pool: WILDCAT
Job Number: T375

JAMES TRUST 8AD #1



C:\New\Roger_S\Desktop\DRS-Stem\JAMES TRUST 8AD\105T5.FKT 29-Jul-14 Vw

Fast

ROCK TYPES

Dolsec	Lmst fw>7	Shgy	Shcol	Ool grnst
Lmst fw<7	Ss	Shblk	Sltst	

ACCESSORIES

MINERAL

- ⊥ Calcareous
- Carbonaceous Flakes
- ▲ Chert, dark
- ↘ Dolomitic
- ∧ Siliceous
- △ Chert White

FOSSIL

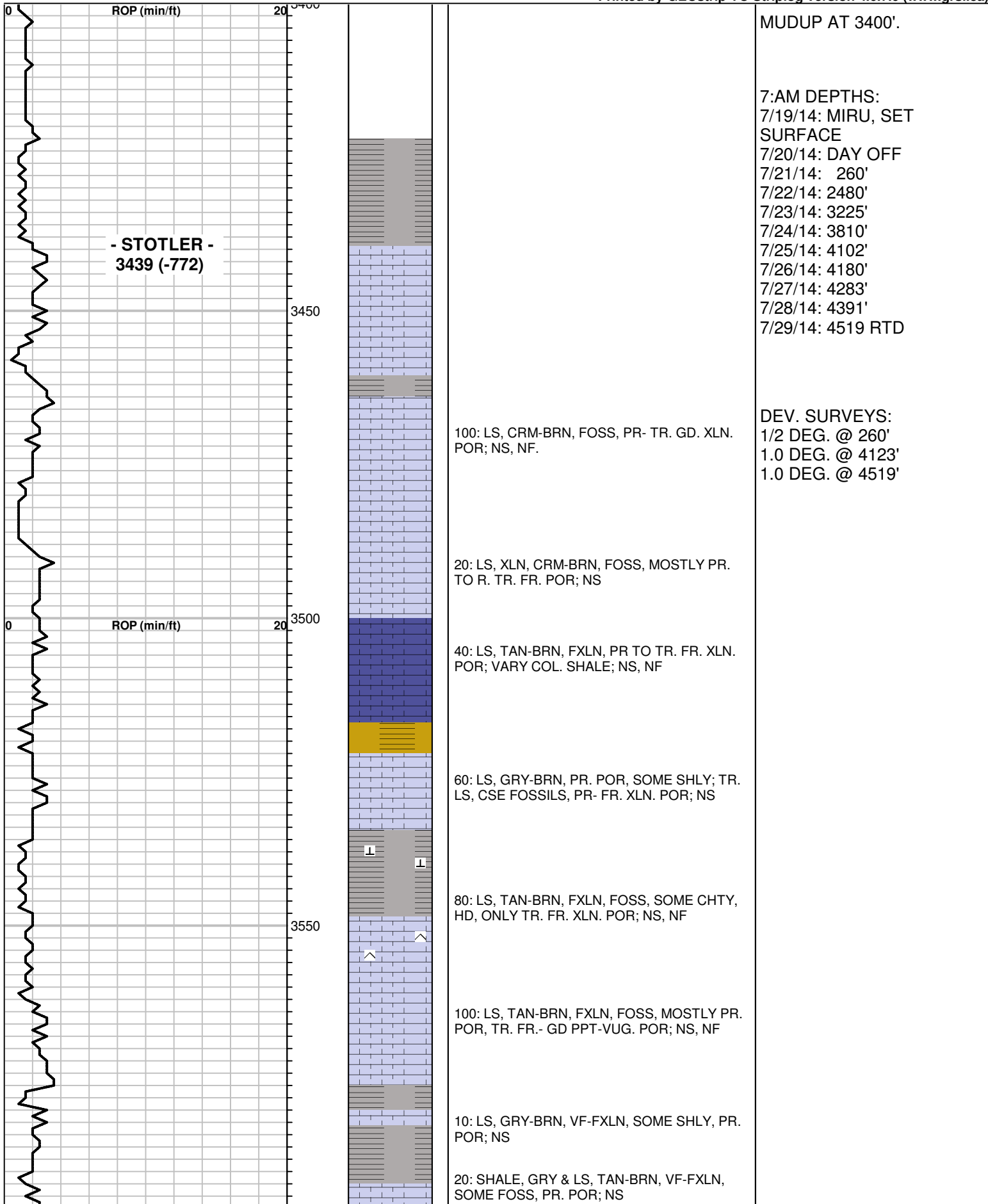
- ◊ Oolites

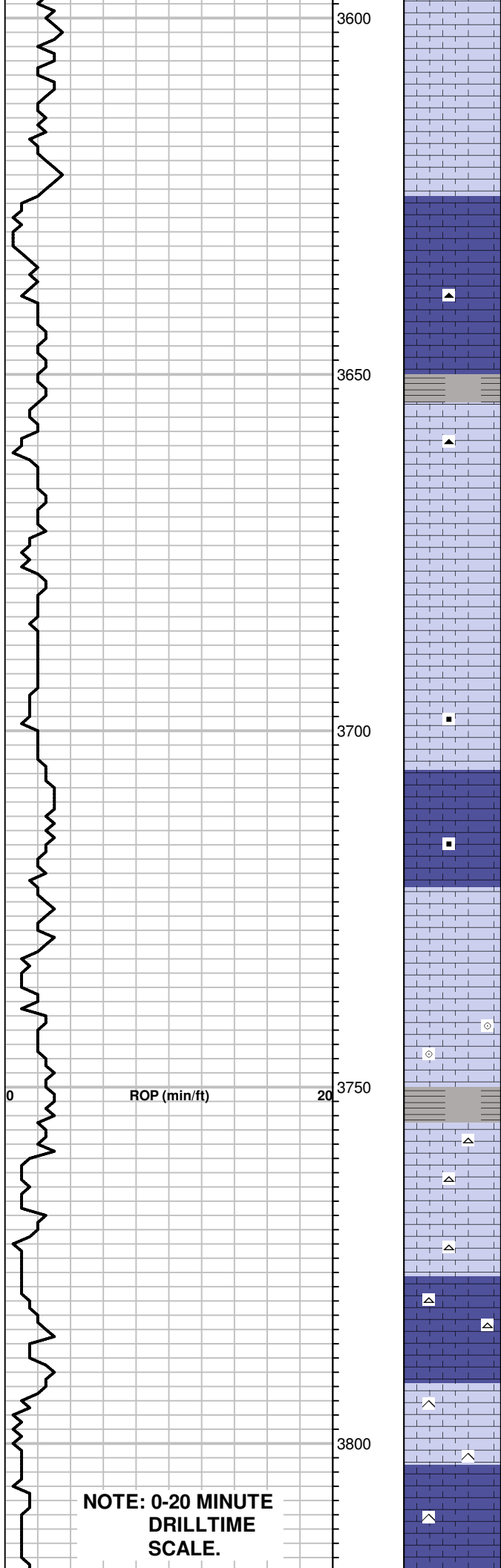
OTHER SYMBOLS

OIL SHOWS

INTERVALS

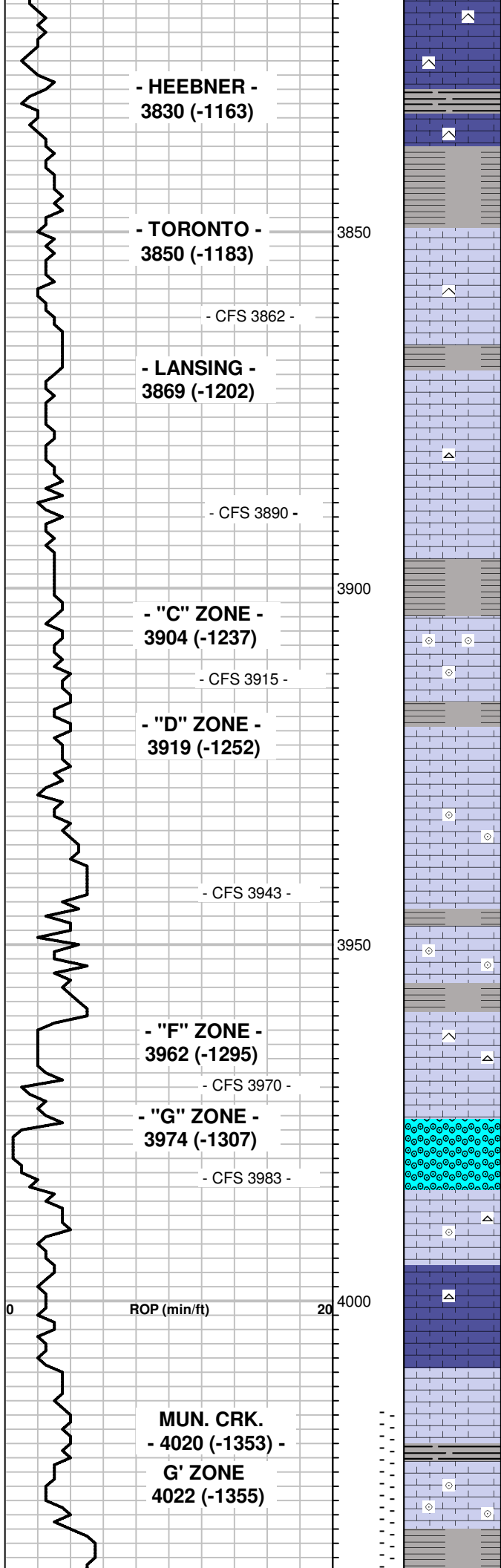
- Even Stn
- Spotted Stn 50 - 75 %
- Spotted Stn 25 - 50 %
- Spotted Stn 1 - 25 %
- Questionable Stn
- D Dead Oil Stn
- Fluorescence
- Core
- DST





- 30: LS, TAN, FXLN, FOSS, PR- TR. FR. XLN. POR & AA; NS
- 40 & 50: LS, TAN-BRN, FXLN, FOSS, PR- TR. FR. XLN. POR; NS, NF
- 60: TR. LS, TAN, FXLN, W/ GD. PPT-VUG. & XLN. POR; NS
- 70: LS, AS ABOVE; NS, NF
- 80: SM. AMT. GRY-BRN CHERT, FOSS; NS.
- 90: LS, TAN-BRN, FOSS, MOSTLY PR. POR; NS, NF
- 100: LS, TAN, FXLN, SLI. FOSS, PR- FR. XLN. POR; NS
- 10: LS, TAN-BRN, FXLN, FOSS, W/ PR- FR. XLN. POR & TR. FOSS. CAST. POR; NS, NF
- 20: LS, TAN-BRN, FXLN, FOSS W/ TR. RED-BRN CARBONACEOUS MATERIAL, PR- TR. GD. XLN. POR; NS
- 30: LS, TAN, FXLN, SOFT, GD. XLN. POR; NS, NF
- 40: LS, AS ABV, TAN FXLN, SOFT, CHLKY, W/ RED-BRN CARB. MAT., GD. XLN. POR; NS
- 50: LS, TAN, DXLN, FOSS W/ PR- FR. XLN. POR; NS, NF.
- 60: MOSTLY LS, BRN, VFXLN, DSE; TR. LS, TAN, V. FOSS. W/ PR. POR; NS
- 70: TR. LS, TAN, V. FOSS/OOL, W/ PR. VIS. POR; NS.
- 80: TR. LS, AS ABV, TAN, V. FOSS/OOL. W/ CALCITE FILL, PR- FR. POR TO TR. LS, BRN, FXLN, FOSS, W/ PR- FR. XLN. POR; NS
- 90: TR. TAN LS, V. FOSS, FR-GD INTER-FOSS. PPT. POR; TR. TAN CHT; NS.
- 100: LS, TAN, FXLN, FOSS, FR- GD. XLN. POR; SOME TAN CHT; NS, NF.
- 10: LS, TAN, FXLN, SLI. CHLKY, FR-GD. XLN. POR; SOME TAN CHT; NS
- 20 & 30: LS, TAN-BRN, FXLN, SOME FOSS, SOME CHTY, PR- TR. FR. XLN. POR; NS, NF
- 40: LS, BRN, FXLN, CALCITIC, CHTY, W/ PR- FR. VIS. POR; NS

**NOTE: 0-20 MINUTE
DRILLTIME
SCALE.**



50: LS, TAN-BRN, FOSS, CHTY. W/ PR- TR. GD. XLN. POR; SHALE, BLK. CARB.; NS

60: LS, BRN, DSE, CHTY; NS

3862: CIRC: 30": SHALE, GRY & TR. LS, CSELY FOSS, PR. VIS. POR; NS

CIRC: 45": LS, CRM-BRN, FXLN, FOSS, SOME CHTY, PR- TR. FR. XLN. POR & TR. PR. FOSS CAST POR; NS, NF.

90: LS, TAN-BRN, FXLN, FOSS, SOME CALCITE FILL, PR- TR. FR. XLN. POR; NS, NF

CIRC 60": LS, TAN, VF-FXLN, FOSS. W/ PR- TR. FR. XLN POR & TR. PR. PPT. TO FOSS CAST. POR; TR. CHT. TAN; NS, NF.

10: SHALE, GRY & GREEN.

CIRC: LS, TAN, V. OOL. - SLI. FOSS, MOSTLY PR. - TR. FR. XLN. POR. & TR. PR. FOSS. CAST. POR; NS

SHALE, GRY.

40: LS, TAN, FXLN, SLI. SUCROSIC TO SLI. FOSS, PR- TR. FR. XLN. POR; NS, NF

43: TR. LS, V. OOL./ FOSS W/ PR- TR. FR. XLN. POR; NS

CIRC 30": LS, TAN, VF-FXLN, TR. SLI. FOSS, MOSTLY DSE - PR. POR; NS, NF.

60: LS, LT. GRY, VFXLN, DSE, TR. SLI. FOSS; NS

70: SM. AMT. LS, CRM-TAN, V. OOL. W/ PR- FR. XLN. POR; NS

CIRC 60": LS, AS ABV. & LS, TAN, FXLN, SLI.CHTY. W/ FR- GD. PPT. POR; SM. AMT. CHERT; NS, NF

CIRC 45": LS, BRN, OOLITIC W/ FR- GD. OOLICASTIC POR; NS, NF.

10: LS, TAN-BRN, VF-FXLN, TR. SLI. OOL./ FOSS, DSE TO TR. FR. XLN. POR; TR. CHERT; NS, NF

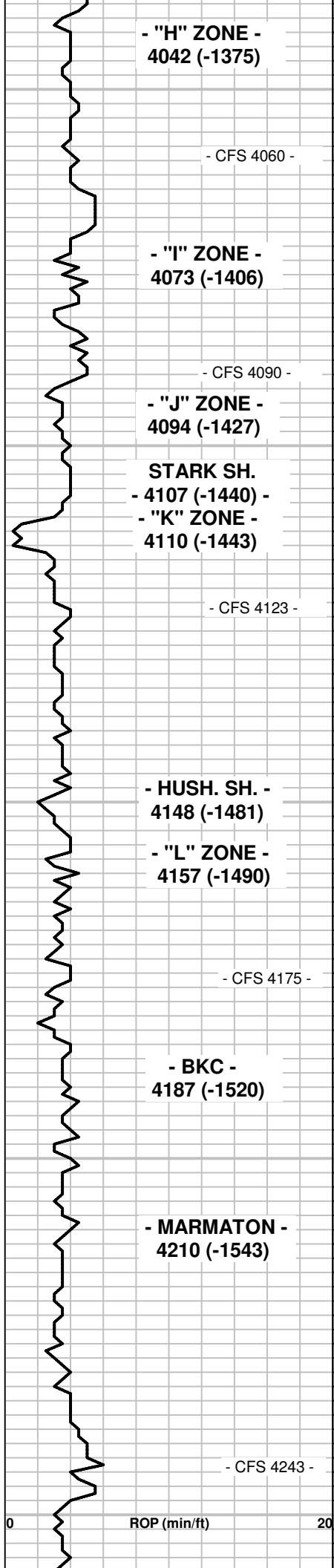
20 & 30: LS, GRY-TAN, VF-FXLN, DSE TO PR. POR; TR. CHERT; NS, NF.

40: LS, BRN, VFXLN, SLI. FOSS, DSE TO SM. AMT. WEATHERED, SLI. CHLKY; NS, NF.

50: TR. BLK. CARB. SHALE; SM. AMT. LS, TAN-BRN, FXLN, OOL./ FOSS, SOME V. CALCITIC, PR- TR. FR. XLN. POR; NS, NF.

MUD AT 3860':
 WT: 9.05
 VIS: 50
 FILTRATE: 8.0
 CHLOR: 2,100
 LCM: 2#

DST \$5: 4015-4045
 "G" ZONE (STRADDLE)
 TIMES: 30-30-30-30
 IF: WEAK SURF. BLOW
 FF: NO BLOW
 REC: 20' DRLG MUD, NS
 IFP: 6-10#, FFP: 10-12#
 SIP: 756-642#
 HP: 1924-1923#
 MAX. TEMP: 118 F.



- "H" ZONE -
4042 (-1375)

- CFS 4060 -

- "I" ZONE -
4073 (-1406)

- CFS 4090 -

- "J" ZONE -
4094 (-1427)

STARK SH.
- 4107 (-1440) -
- "K" ZONE -
4110 (-1443)

- CFS 4123 -

- HUSH. SH. -
4148 (-1481)

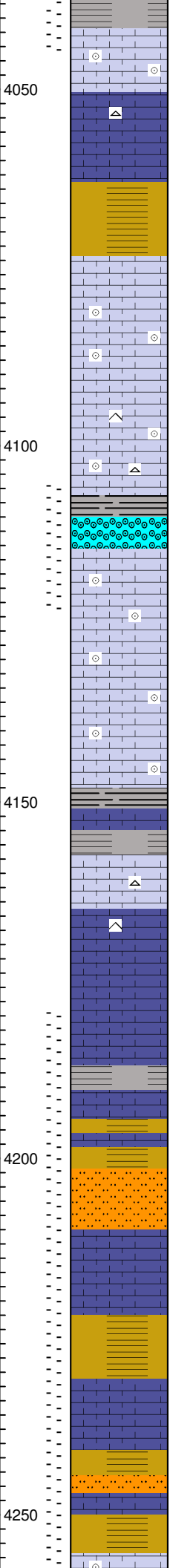
- "L" ZONE -
4157 (-1490)

- CFS 4175 -

- BKC -
4187 (-1520)

- MARMATON -
4210 (-1543)

- CFS 4243 -



60: SM. AMT. LS, TAN, FXLN, V. OOL./ FOSS, W/ PR. XLN. POR; NS, NF.

CIRC 30": LS, TAN-BRN, VF-FXLN, MOSTLY DSE; TR. CHERT; NS

80: SHALE, VARY COLORED.

90: LS, TAN-BRN, VF-FXLN, R. TR. FOSS, DSE TO PR. XLN. POR; NS, NF.

CIRC 30": SM. AMT. LS, TAN, VF-FXLN, V. OOL./ FOSS, DSE TO PR. XLN. POR; NS

08: SM. AMT. LS, TAN, FXLN- FN GRAN, SLI. CHTY, PR. VIS. POR; TR. CHT; NS, NF.

CIRC 45": TR. LS, V. OOL, PR. - TR. FR. XLN. POR; & CHERT, GRY, V. OOL, SHP; SHALE, BLK; NS, NF.

CIRC 60": LS, TAN, OOL, W/ FR- V. GD. OOLIC. POR, 30% W/ S-FSFO, SSGB, SPTY- TOT. MD. BRN. SAT. STN, FR. ODOR, 60-70% BARREN

40: LS, TAN, V. OOL./ FOSS, W/ PR. XLN. POR; MUCH SHALE & SST IN SMP AFTER DST.

50: LS, AS ABV, MUCH WEATHERED, SOFT, SLI. CHLKY; MUCH SHALE IN SMP; NS

60: LS, FXLN, OOL./ FOSS, W/ PR- FR. XLN. POR; TR. BLK. SHALE; NS

70: LS, TAN-BRN, VF-FXLN, PR- TR. FR. XLN. POR; NS

75: LS, AS ABV, V. SLI. FOSS, PR- TR. FR. XLN. POR; TR. CHERT, GRY; NS

CIRC 45": LS, GRY-BRN, VFXLN, SLI. CHTY, DSE, SLI. CALCITIC; NS

100: LS, TAN, FXLN, W/ CSE, WHITE CHT. FRAGMENTS, PR. XLN. POR; NS, NF.

10: LS, BRN, VFXLN, DSE TO SM. AMT. WEATHERED, SLI. CHLKY; SHALE, GRY; NS

20: SOME HD, GREEN - MAROON SILTSTONE & VARY COL. SHALE.

30: LS, BRN, VFXLN, DSE TO SM. AMT. WEATH. SLI. CHLKY, CP. PCS, SLI. CHLKY W/ PR. SPTY DULL FLUOR & NO CUT, 1 PC. W/ DK. SPTY TARRY STN & TR. HVY. FO IN FR. XLN TO TR. PPT. POR, DETECT V. FT. ODOR.

40: LS, REDDISH BRN (SH. STAINING), VFXLN, DSE, TR. V. FOSS; AND RED, GRY & BLK SH.

CIRC 60": LS, TAN-BRN, VFXLN, DSE TO SM. AMT. WEATHERED SLI. CHLKY, CP. CPS W/ SPTY DULL FLUOR, NO CUT.

60: VARY COL. SHALE & SILTSTN.

70 & 76: LS, TAN-BRN, SLI. OOL./ FOSS, DSE TO TR. FR. XLN. POR, SHALE, GRY, BRN

SEE CHART ABOVE

DST #1: 4105-4123

"K" ZONE

TIMES: 30-30-30-30

IF: 1/4" BLOW

FF: NO BLOW, FLUSHED TOOL AT 3", NO HELP.

REC: 20' SOCM (3% OIL)

IFP: 7-14#, FFP: 18-20#

SIP: 288-230#

HP: 1946-1943#

MAX. TEMP: 119 F.

SEE CHART ABOVE.

- CFS 4108 -

PIPE STRAP @ 4123:
4.62' SHORT TO BOARD.

MUCH SHALE IN SAMPLES AFTER DST #1. CLEARED UP IN 20 TO 30 FT.

MUD AT 4123:

WT: 9.2

VIS: 49

FILTRATE: 8.8

CHLOR: 2,500

LCM: 1#

MUD AT 4247:

WT: 9.1

VIS: 57

FILTRATE: 10.4

CHLOR: 4,000

LCM: 1#

DST #2: 4179-4276

MARMATON

TIMES: 30-30-30-30

IF: WEAK SURF. BLOW

FF: NO BLOW, FLUSHED TOOL AT 2", NO HELP.

REC: 15' DRLG. MUD, NS

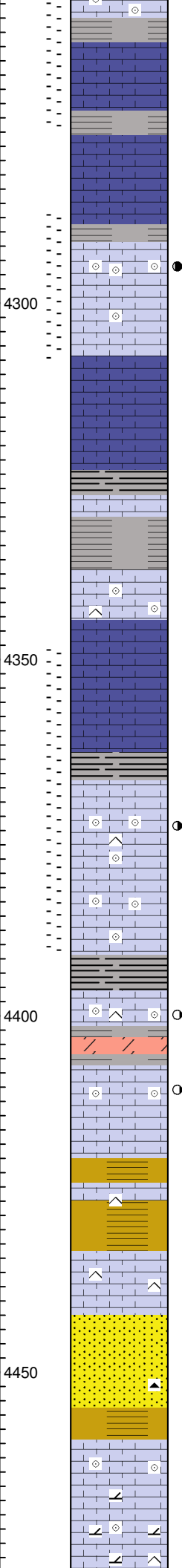
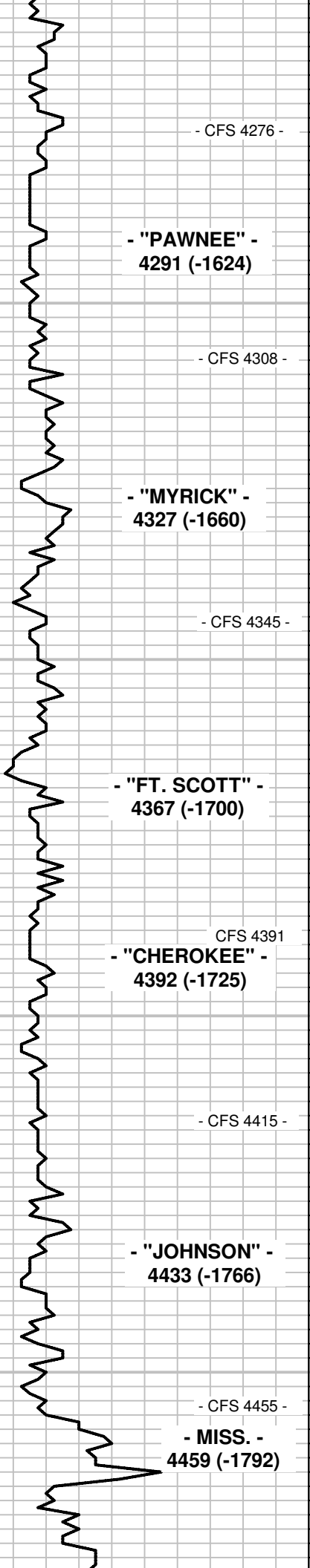
IFP: 6-10#, FFP: 11-16#

SIP: 157-140#

HP: 1997-1997#

MAX. TEMP: 122 F.

SEE CHART ABOVE



TO TR. FR. XLN. POR; SHALE, GRY, GRN & BLK; NS

CIRC 60": LS, GRY-BRN, VFXLN, DSE TO SM. AMT. WEATH, CRM, CHLKY; NS

100: LS, BRN, VFXLN, DSE, SLI. CALCITIC FILL TO SOME WEATHERED, CRM SLI. CHLKY; NS

08 & CIRC 60": ONLY FEW PCS LS, OOL. W/ PR. - GD. OOLIC. & XLN. POR, SSFO&G, SPTY - TOTAL LT. BRN. SAT. STN, SPTY-TOTAL MD. BRT. FLUOR IN DRY, GD. FLUSH CUT, SLI.-FR. ODOR (THE BETTER POROSITY IS BAREN.)

30: LS, BRN, VF-FXLN, DSE TO PR. XLN. POR; NS.

40: LS, DK. BRN, VFXLN, DSE & SHALE, GRY & BLK; NS

CIRC 60": LS, TAN-BRN, VF-FXLN, V. OOL./FOSS, TR. SLI. CHTY, DSE TO PR. XLN. POR, TR. WEATH, SLI. CHLKY, SOFT; NS, NF.

60 & 70: LS, BRN, VFXLN, DSE TO SOME WEATHERED, SOFT, SLI. CHLKY; NS

80: SHALE, BLACK, CARBONACEOUS

90: ONLY FEW PCS/ TRAY LS, TAN, V. OOL / FOSS, SLI. CHTY, HD, PR. SPTY INTER-OOL. PPT. POR, S-FSFO&G (SOME BLEEDING), LT. SPTY. STN. ASSOC. W/ POR, FR. ODOR

CIRC 60": TR. LS, TAN, V. OOL./ FOSS. W/ FR. XLN. POR & LS, DSE TO WEATHERED; TR. LS AS ABV. W/ SO.

15: TR. LS, TAN, VFXLN, SLI. CHTY, TR. V. OOL, R. TR. V. PR. VUG. POR, CP. PCS. W/ DULL FLUOR, TR. PPT. FO, WK CRUSH CUT, NO STN, NO ODOR; TR. DOL LS, PR. POR; NS

CIRC: 60": ONLY 3-4 V. SM. PCS. LS, ALL OOLITES W/ PR- TR. FR. INTER-OOL. PPT. POR, TR, FO, TOT. LT. BRN. SAT. STN, ?ABLE ODOR

40: SHALE, BLK, GRY, GRN; LS, TAN, VFXLN, SLI. FOSS, CHTY, HD, DSE; NS, NF.

50: SHALE, GRY & GRN; LS, TAN-BRN, VFXLN, SOME FOSS, SOME CHTY, DSE TO SOME CRM CHLY LS; NS, NF.

55: SST, CRM, VF TO TR. MD GRND, FROST TO TR. CLR, SBANG-SBRD, TITE; NS, NF.

CIRC 60": SST, CRM-YELL, VF-FN & TR. MD-CSE GRNS, CLR- FROST, SBANG-SBRD, FRLY WELL SORT, TITE, HD TO SOME FRIAB. W/ FR INTER-GRN. POR; TR TAN-ORG CHT & QTZ; NS

70: LS, BRN- MUST., VFXLN, V. OOL, DSE TO PR. XLN. POR; NS, NF.

80: LS, TAN-BRN, FXLN, SOME SLI. DOL, PR. XLN. POR; SHALE, GRY; NS, NF.

CIRC 30": LS, SLI. DOL, FXLN, SUCROSIC, SOME CHTY, DSE TO PR. XLN. POR; NS, NF.

DST #3: 4287-4308
"PAWNEE"
TIMES: 30-30-30-30
IF: WK. SURF. BLOW DIED IN 5"
FF: NO BLOW, FLUSHED TOOL AT 1", NO HELP.
REC: 1' DRLG. MUD, NS (TOOL SMP: 100% MUD W/ SPKS OIL.)
IFP: 4-6#, FFP: 6-6#
SIP: 9-10#
HP: 2050-2049#
MAX. TEMP. 117 F.
SEE CHART ABOVE

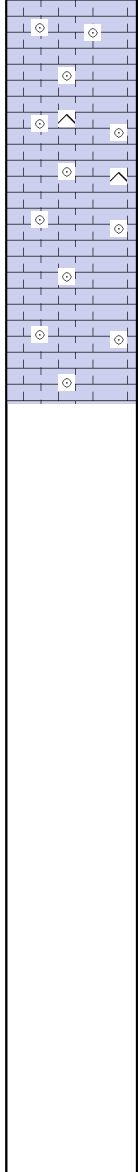
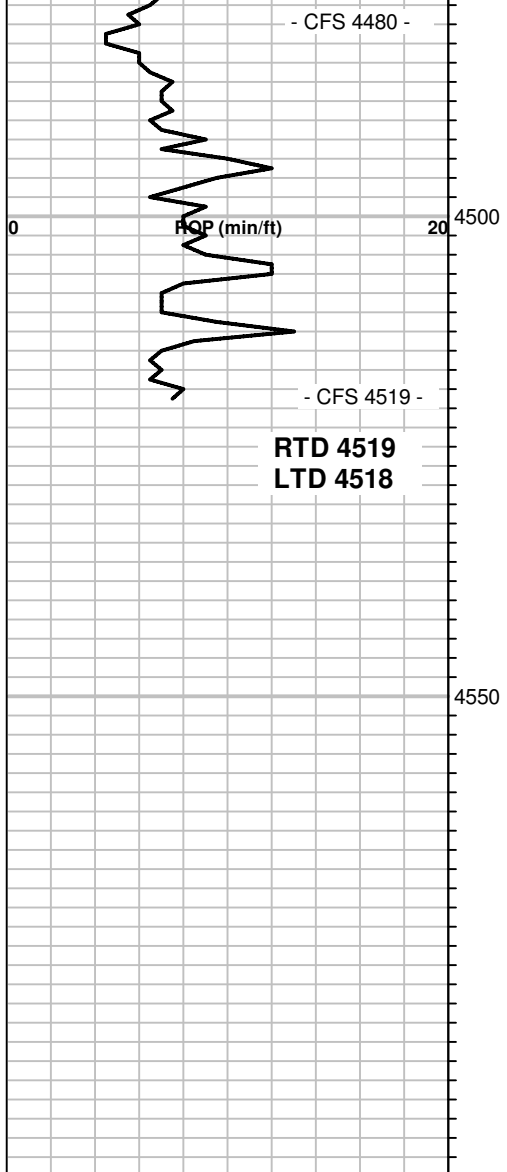
TOOK WEIGHT OFF BIT AGAIN AT 4309: 40,000 DOWN TO 35,000#.

MUD AT 4300:
 WT: 9.2
 VIS: 50
 FILTRATE: 10.4
 CHLOR: 2,500
 LCM: 1#

DST #4: 4348-4391
FT. SCOTT
TIMES: 30-30-30-30
IF: WK. SURF. BLOW
FF: NO BLOW, FLUSHED TOOL AT 2", NO HELP.
REC: 15' MUD W/ TR. OIL (TOOL SMP: 2% O., 98%M)
IFP: 6-8#, FFP: 9-13#
SIP: 22-21#
HP: 2090-2088#
MAX. TEMP: 123 F.
SEE CHART ABOVE

MUD AT 4391:
 WT: 9.2
 VIS: 78
 FILTRATE: 10.4
 CHLOR: 3,800
 LCM: TR.

DRILL STRING TORQUING UP & DRLG V. ROUGH HERE IN SAND. APPARENTLY KNOCKED TEETH OFF OF BIT HERE. WHEN PULLED OUT AT 4519 RTD, MANY TEETH MISSING FROM BIT.



90: LS, TAN, V. OOL./ FOSS, W/ PR- TR. FR. XLN. POR; NS, NF.

100 & 10: LS, TAN, CSELY OOL./ FOSS/ FRAGMENTAL, SOME CHTY, PR- FR. XLN. POR; NS, NF.

19 & 30" CIRC: LS, TAN, CSELY OOL./ FOSS/ FRAGMENTAL, W/ MOSTLY PR. XLN. POR; NS, NF.

MUCH GRY SHALE IN SAMPLES HERE.

BIT WORE OUT.

MUD AT 4519:
 WT: 9.3
 VIS: 60
 FILTRATE: 10.0
 CHLOR: 2,200
 LCM: 1#

AT 4519, CFS 30", THEN RAN 10 STAND SHORT TRIP THEN CIRC. 105" FOR LOG.