



DRILL STEM TEST REPORT

Prepared For: **American Warrior Inc**

PO Box 399
Garden City, KS 67846

ATTN: Logan Walker

4-26s-31w Pratt,KS

Weingartner-Slicker #1-4

Start Date: 2014.09.01 @ 21:14:16

End Date: 2014.09.02 @ 05:45:16

Job Ticket #: 57752 DST #: 1

Trilobite Testing, Inc
1515 Commerce Parkway Hays, KS 67601
ph: 785-625-4778 fax: 785-625-5620

Printed: 2014.09.08 @ 10:16:43

American Warrior Inc

Weingartner-Slicker #1-4

4-26s-31w Pratt,KS

DST # 1

LKC "F" & "G"

2014.09.01



TRILOBITE TESTING, INC

DRILL STEM TEST REPORT

American Warrior Inc
 PO Box 399
 Garden City, KS 67846
 ATTN: Logan Walker

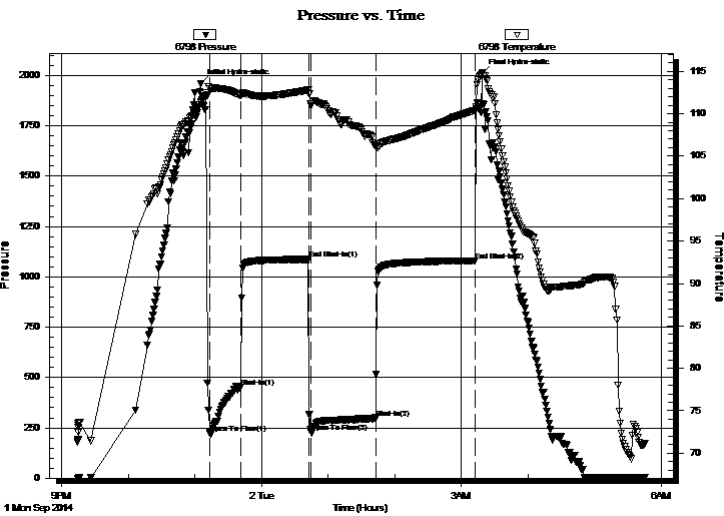
Weingartner-Slicker #1-4
4-26s-31w Pratt,KS
 Job Ticket: 57752 **DST#: 1**
 Test Start: 2014.09.01 @ 21:14:16

GENERAL INFORMATION:

Formation: **LKC "F & G"**
 Deviated: Yes Whipstock: ft (KB) Test Type: Conventional Bottom Hole (Initial)
 Time Tool Opened: 23:13:31 Tester: Leal Cason
 Time Test Ended: 05:45:16 Unit No: 74
Interval: 3771.00 ft (KB) To 3826.00 ft (KB) (TVD) Reference Elevations: 1948.00 ft (KB)
 Total Depth: 3826.00 ft (KB) (TVD) 1936.00 ft (CF)
 Hole Diameter: 7.88 inches Hole Condition: Good KB to GR/CF: 12.00 ft

Serial #: 6798 Inside
 Press@RunDepth: 299.62 psig @ ft (KB) Capacity: 8000.00 psig
 Start Date: 2014.09.01 End Date: 2014.09.02 Last Calib.: 2014.09.02
 Start Time: 21:14:17 End Time: 05:45:16 Time On Btm: 2014.09.01 @ 23:05:01
 Time Off Btm: 2014.09.02 @ 03:18:46

TEST COMMENT: IF: Strong Blow , BOB in 20 seconds, GTS in 6 minutes, Gauged & Caught Sample
 IS: 4" Blow Back
 FF: Strong Blow , BOB & GTS Immediate, Gauged Gas
 FS: 1" Blow Back



PRESSURE SUMMARY

Time (Min.)	Pressure (psig)	Temp (deg F)	Annotation
0	1957.61	111.37	Initial Hydro-static
9	222.45	112.90	Open To Flow (1)
36	452.60	112.09	Shut-In(1)
98	1087.32	112.80	End Shut-In(1)
100	230.06	110.96	Open To Flow (2)
158	299.62	106.16	Shut-In(2)
248	1080.47	110.39	End Shut-In(2)
254	2010.75	114.74	Final Hydro-static

Recovery

Length (ft)	Description	Volume (bbl)
0.00	GTS	0.00
186.00	GOMCW 30%G 10%O 20%M 40%W	2.61
164.00	GOWCM 5%G 2%O 15%W 78%M	2.30

Gas Rates

	Choke (inches)	Pressure (psig)	Gas Rate (Mcf/d)
First Gas Rate	0.25	180.00	308.40
Last Gas Rate	0.50	100.00	771.71
Max. Gas Rate	0.25	300.00	498.76



**TRILOBITE
TESTING, INC**

DRILL STEM TEST REPORT

TOOL DIAGRAM

American Warrior Inc
PO Box 399
Garden City, KS 67846
ATTN: Logan Walker

Weingartner-Slicker #1-4
4-26s-31w Pratt,KS
Job Ticket: 57752 **DST#: 1**
Test Start: 2014.09.01 @ 21:14:16

Tool Information

Drill Pipe:	Length: 3750.00 ft	Diameter: 3.80 inches	Volume: 52.60 bbl	Tool Weight:	2100.00 lb
Heavy Wt. Pipe:	Length: 0.00 ft	Diameter: 0.00 inches	Volume: 0.00 bbl	Weight set on Packer:	25000.00 lb
Drill Collar:	Length: 0.00 ft	Diameter: 2.25 inches	Volume: 0.00 bbl	Weight to Pull Loose:	80000.00 lb
			<u>Total Volume: 52.60 bbl</u>	Tool Chased	ft
Drill Pipe Above KB:	5.00 ft			String Weight: Initial	48000.00 lb
Depth to Top Packer:	3771.00 ft			Final	50000.00 lb
Depth to Bottom Packer:	ft				
Interval between Packers:	55.00 ft				
Tool Length:	81.00 ft				
Number of Packers:	2	Diameter: 6.75 inches			

Tool Comments:

Tool Description	Length (ft)	Serial No.	Position	Depth (ft)	Accum. Lengths
-------------------------	--------------------	-------------------	-----------------	-------------------	-----------------------

Shut In Tool	5.00			3750.00	
Hydraulic tool	5.00			3755.00	
Jars	5.00			3760.00	
Safety Joint	2.00			3762.00	
Packer	5.00			3767.00	26.00 Bottom Of Top Packer
Packer	4.00			3771.00	
Stubb	1.00			3772.00	
Recorder	0.00	6798	Inside	3772.00	
Recorder	0.00	8367	Outside	3772.00	
Perforations	13.00			3785.00	
Change Over Sub	1.00			3786.00	
Drill Pipe	31.00			3817.00	
Change Over Sub	1.00			3818.00	
Perforations	5.00			3823.00	
Bullnose	3.00			3826.00	55.00 Bottom Packers & Anchor

Total Tool Length: 81.00



**TRILOBITE
TESTING, INC**

DRILL STEM TEST REPORT

FLUID SUMMARY

American Warrior Inc
PO Box 399
Garden City, KS 67846
ATTN: Logan Walker

Weingartner-Slicker #1-4
4-26s-31w Pratt,KS
Job Ticket: 57752 **DST#: 1**
Test Start: 2014.09.01 @ 21:14:16

Mud and Cushion Information

Mud Type: Gel Chem	Cushion Type:	Oil API:	deg API
Mud Weight: 10.00 lb/gal	Cushion Length: ft	Water Salinity:	85000 ppm
Viscosity: 63.00 sec/qt	Cushion Volume: bbl		
Water Loss: 10.78 in ³	Gas Cushion Type:		
Resistivity: ohm.m	Gas Cushion Pressure: psig		
Salinity: 13000.00 ppm			
Filter Cake: 0.02 inches			

Recovery Information

Recovery Table

Length ft	Description	Volume bbl
0.00	GTS	0.000
186.00	GOMCW 30%G 10%O 20%M 40%W	2.609
164.00	GOWCM 5%G 2%O 15%W 78%M	2.300

Total Length: 350.00 ft Total Volume: 4.909 bbl

Num Fluid Samples: 0 Num Gas Bombs: 0 Serial #:

Laboratory Name: Laboratory Location:

Recovery Comments: RW w as .09 @ 72 degrees



**TRILOBITE
TESTING, INC.**

DRILL STEM TEST REPORT

GAS RATES

American Warrior Inc

Weingartner-Slicker #1-4

PO Box 399
Garden City, KS 67846

4-26s-31w Pratt,KS

Job Ticket: 57752

DST#: 1

ATTN: Logan Walker

Test Start: 2014.09.01 @ 21:14:16

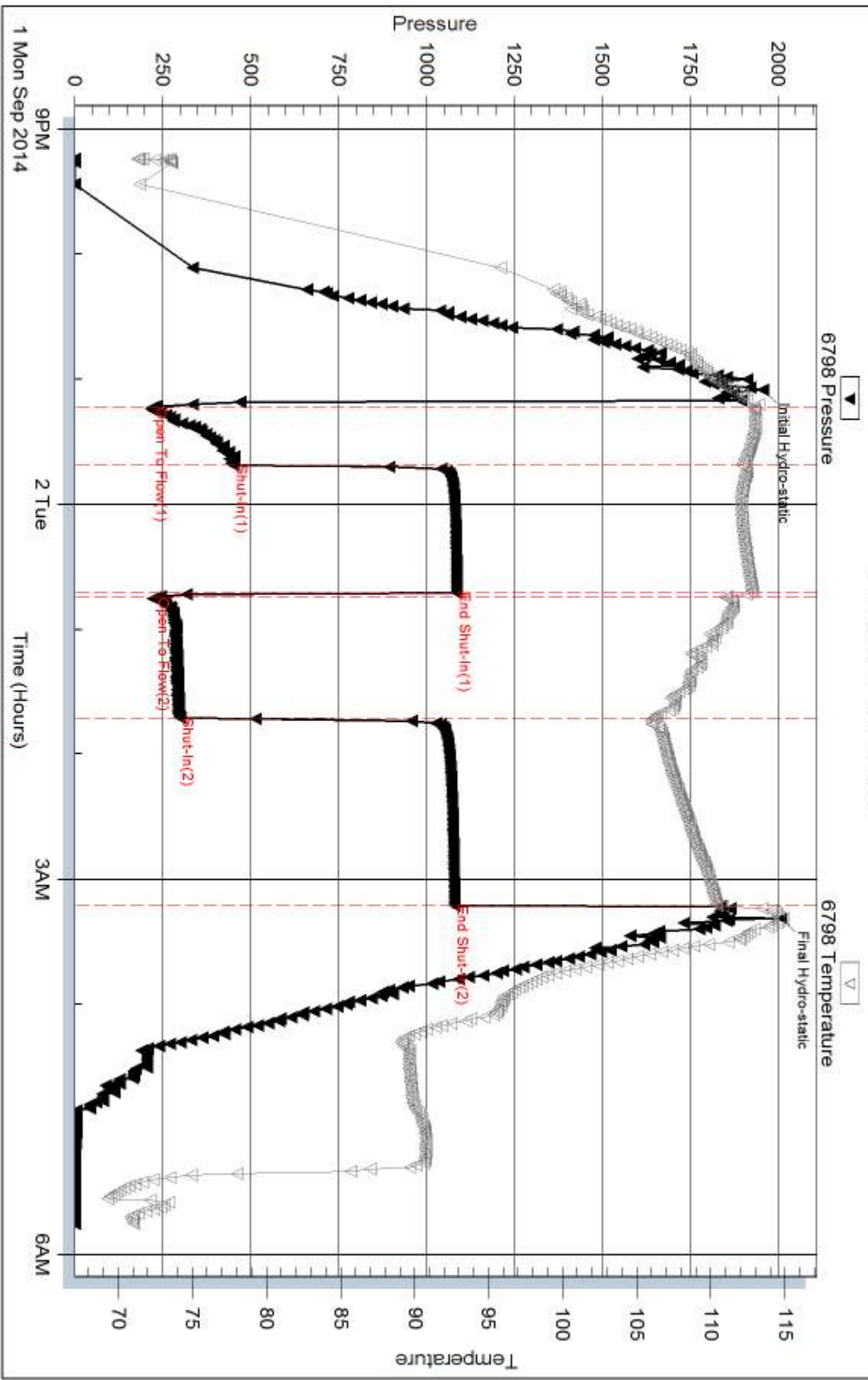
Gas Rates Information

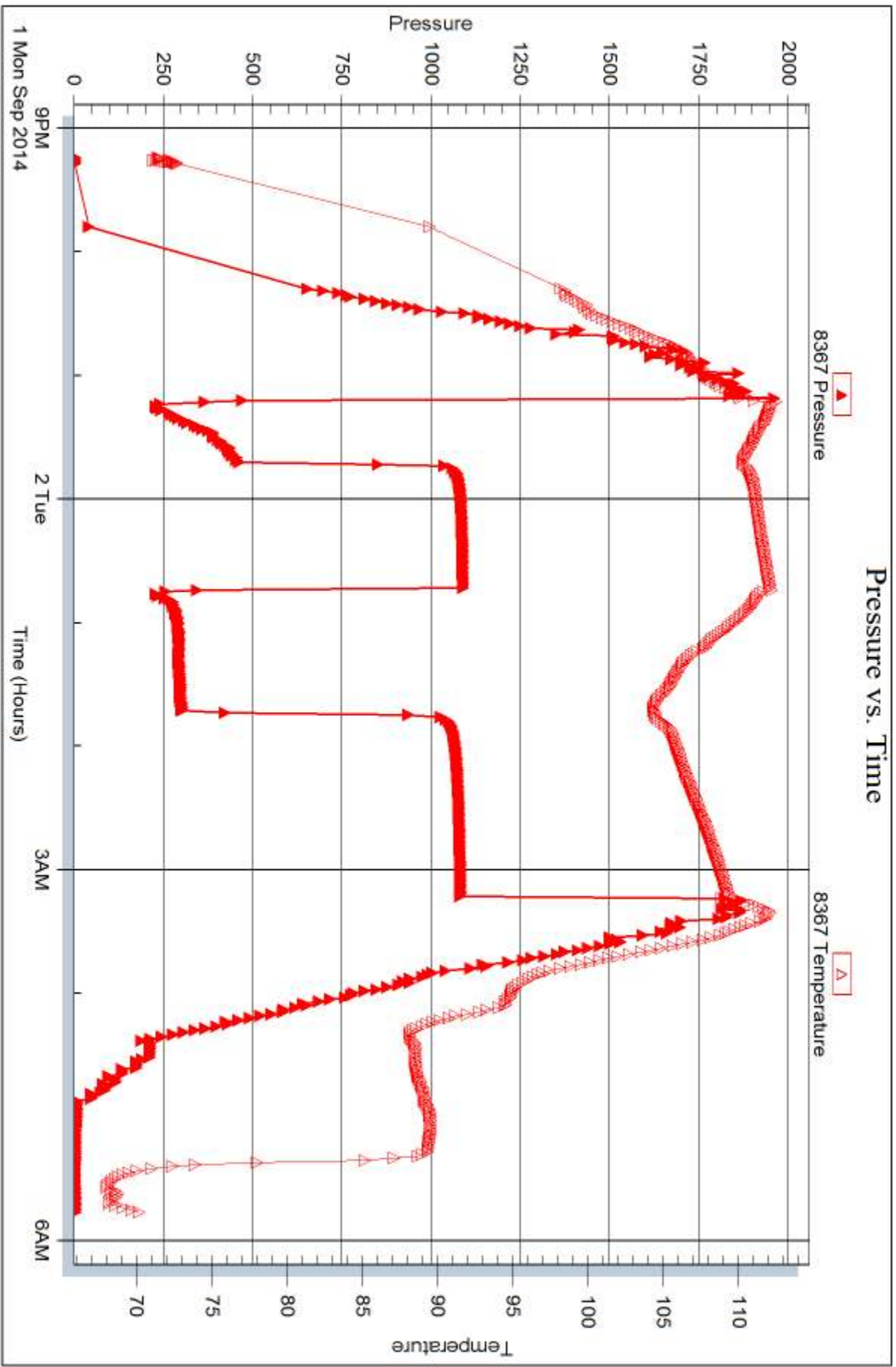
Temperature: 59 (deg F)
Relative Density: 0.65
Z Factor: 0.8

Gas Rates Table

Flow Period	Elapsed Time	Choke (inches)	Pressure (psig)	Gas Rate (Mcf/d)
1	10	0.25	180.00	308.40
1	20	0.25	240.00	403.58
1	30	0.25	300.00	498.76
2	10	0.50	88.00	690.76
2	20	0.50	95.00	737.98
2	30	0.50	100.00	771.71
2	40	0.50	100.00	771.71
2	50	0.50	100.00	771.71
2	60	0.50	100.00	771.71

Pressure vs. Time







DRILL STEM TEST REPORT

Prepared For: **American Warrior Inc**

PO Box 399
Garden City, KS 67846

ATTN: Logan Walker

4-26s-31w Pratt,KS

Weingartner-Slicker #1-4

Start Date: 2014.09.02 @ 17:55:49

End Date: 2014.09.03 @ 01:42:34

Job Ticket #: 57753 DST #: 2

Trilobite Testing, Inc
1515 Commerce Parkway Hays, KS 67601
ph: 785-625-4778 fax: 785-625-5620

Printed: 2014.09.08 @ 11:06:29

American Warrior Inc

Weingartner-Slicker #1-4

4-26s-31w Pratt,KS

DST # 2

LKC "H"

2014.09.02



TRILOBITE TESTING, INC

DRILL STEM TEST REPORT

American Warrior Inc
 PO Box 399
 Garden City, KS 67846
 ATTN: Logan Walker

Weingartner-Slicker #1-4
4-26s-31w Pratt,KS
 Job Ticket: 57753 **DST#: 2**
 Test Start: 2014.09.02 @ 17:55:49

GENERAL INFORMATION:

Formation: **LKC "H"**
 Deviated: Yes Whipstock: ft (KB)
 Time Tool Opened: 19:34:49
 Time Test Ended: 01:42:34
 Interval: **3863.00 ft (KB) To 3893.00 ft (KB) (TVD)**
 Total Depth: 3893.00 ft (KB) (TVD)
 Hole Diameter: 7.88 inches Hole Condition: Good
 Test Type: Conventional Bottom Hole (Reset)
 Tester: Leal Cason
 Unit No: 74
 Reference Elevations: 1948.00 ft (KB)
 1936.00 ft (CF)
 KB to GR/CF: 12.00 ft

Serial #: 6798

Inside

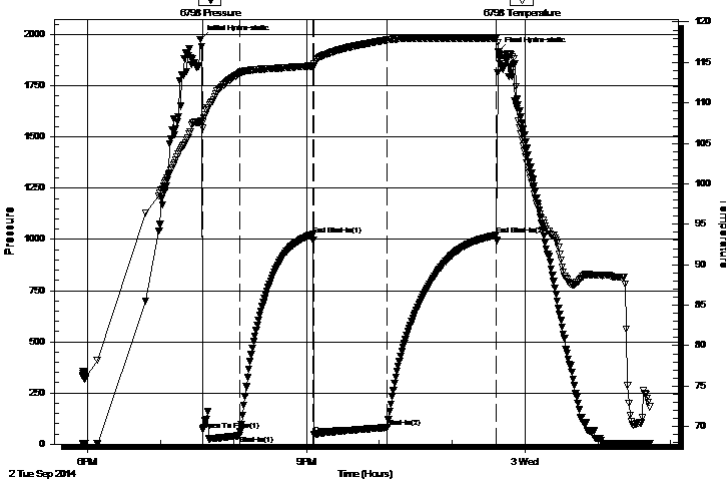
Press@RunDepth: 82.69 psig @ ft (KB) Capacity: 8000.00 psig
 Start Date: 2014.09.02 End Date: 2014.09.03 Last Calib.: 2014.09.03
 Start Time: 17:55:50 End Time: 01:42:34 Time On Btm: 2014.09.02 @ 19:32:34
 Time Off Btm: 2014.09.02 @ 23:38:04

TEST COMMENT: IF: Fair Blow , BOB in 5 minutes
 IS: No Blow Back
 FF: Strong Blow , BOB in 3 minutes
 FS: No Blow Back

PRESSURE SUMMARY

Time (Min.)	Pressure (psig)	Temp (deg F)	Annotation
0	1976.78	107.67	Initial Hydro-static
3	69.72	107.62	Open To Flow (1)
33	41.49	113.64	Shut-In(1)
93	1023.86	114.56	End Shut-In(1)
94	46.25	114.54	Open To Flow (2)
154	82.69	117.79	Shut-In(2)
244	1020.17	117.98	End Shut-In(2)
246	1916.96	116.34	Final Hydro-static

Pressure vs. Time



Recovery

Length (ft)	Description	Volume (bbl)
0.00	186 GIP	0.00
62.00	GOMCW 4%G 4%O 24%M 68%W	0.87
92.00	GOCM 10%G 5%O 85%M	1.29

* Recovery from multiple tests

Gas Rates

	Choke (inches)	Pressure (psig)	Gas Rate (Mcf/d)



TRILOBITE TESTING, INC

DRILL STEM TEST REPORT

American Warrior Inc
 PO Box 399
 Garden City, KS 67846
 ATTN: Logan Walker

Weingartner-Slicker #1-4
4-26s-31w Pratt,KS
 Job Ticket: 57753 **DST#: 2**
 Test Start: 2014.09.02 @ 17:55:49

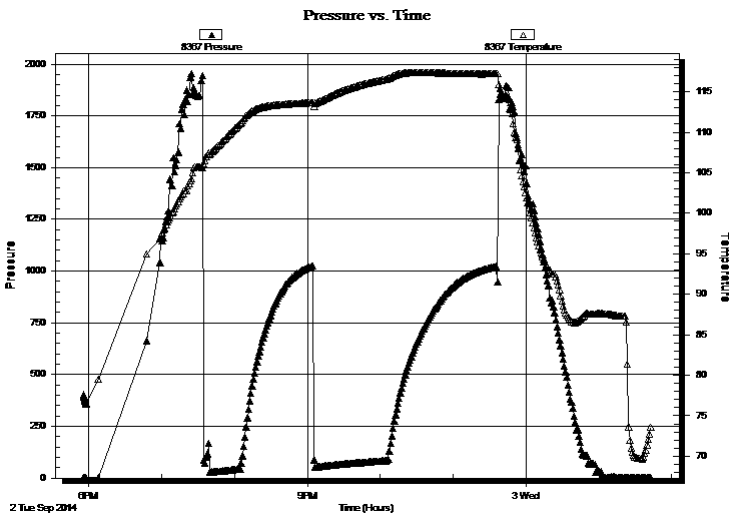
GENERAL INFORMATION:

Formation: **LKC "H"**
 Deviated: Yes Whipstock: ft (KB)
 Time Tool Opened: 19:34:49
 Time Test Ended: 01:42:34
 Interval: **3863.00 ft (KB) To 3893.00 ft (KB) (TVD)**
 Total Depth: 3893.00 ft (KB) (TVD)
 Hole Diameter: 7.88 inches Hole Condition: Good
 Test Type: Conventional Bottom Hole (Reset)
 Tester: Leal Cason
 Unit No: 74
 Reference Elevations: 1948.00 ft (KB)
 1936.00 ft (CF)
 KB to GR/CF: 12.00 ft

Serial #: 8367 Outside
 Press@RunDepth: psig @ ft (KB) Capacity: 8000.00 psig
 Start Date: 2014.09.02 End Date: 2014.09.03 Last Calib.: 2014.09.03
 Start Time: 17:55:50 End Time: 01:42:34 Time On Btm:
 Time Off Btm:

TEST COMMENT: IF: Fair Blow , BOB in 5 minutes
 IS: No Blow Back
 FF: Strong Blow , BOB in 3 minutes
 FS: No Blow Back

PRESSURE SUMMARY



Time (Min.)	Pressure (psig)	Temp (deg F)	Annotation

Recovery

Length (ft)	Description	Volume (bbl)
0.00	186 GIP	0.00
62.00	GOMCW 4%G 4%O 24%M 68%W	0.87
92.00	GOCM 10%G 5%O 85%M	1.29

Gas Rates

Choke (inches)	Pressure (psig)	Gas Rate (Mcf/d)

* Recovery from multiple tests



**TRILOBITE
TESTING, INC**

DRILL STEM TEST REPORT

TOOL DIAGRAM

American Warrior Inc
PO Box 399
Garden City, KS 67846
ATTN: Logan Walker

Weingartner-Slicker #1-4
4-26s-31w Pratt,KS
Job Ticket: 57753 **DST#: 2**
Test Start: 2014.09.02 @ 17:55:49

Tool Information

Drill Pipe:	Length: 3873.00 ft	Diameter: 3.80 inches	Volume: 54.33 bbl	Tool Weight:	2100.00 lb
Heavy Wt. Pipe:	Length: 0.00 ft	Diameter: 0.00 inches	Volume: 0.00 bbl	Weight set on Packer:	25000.00 lb
Drill Collar:	Length: 0.00 ft	Diameter: 2.25 inches	Volume: 0.00 bbl	Weight to Pull Loose:	80000.00 lb
			<u>Total Volume: 54.33 bbl</u>	Tool Chased	ft
Drill Pipe Above KB:	31.00 ft			String Weight: Initial	48000.00 lb
Depth to Top Packer:	3868.00 ft			Final	50000.00 lb
Depth to Bottom Packer:	ft				
Interval between Packers:	25.00 ft				
Tool Length:	51.00 ft				
Number of Packers:	2	Diameter: 6.75 inches			

Tool Comments:

Tool Description	Length (ft)	Serial No.	Position	Depth (ft)	Accum. Lengths
-------------------------	--------------------	-------------------	-----------------	-------------------	-----------------------

Shut In Tool	5.00			3847.00	
Hydraulic tool	5.00			3852.00	
Jars	5.00			3857.00	
Safety Joint	2.00			3859.00	
Packer	5.00			3864.00	26.00 Bottom Of Top Packer
Packer	4.00			3868.00	
Stubb	1.00			3869.00	
Recorder	0.00	6798	Inside	3869.00	
Recorder	0.00	8367	Outside	3869.00	
Perforations	21.00			3890.00	
Bullnose	3.00			3893.00	25.00 Bottom Packers & Anchor

Total Tool Length: 51.00



**TRILOBITE
TESTING, INC**

DRILL STEM TEST REPORT

FLUID SUMMARY

American Warrior Inc
PO Box 399
Garden City, KS 67846
ATTN: Logan Walker

Weingartner-Slicker #1-4
4-26s-31w Pratt,KS
Job Ticket: 57753 **DST#: 2**
Test Start: 2014.09.02 @ 17:55:49

Mud and Cushion Information

Mud Type: Gel Chem	Cushion Type:	Oil API:	deg API
Mud Weight: 9.00 lb/gal	Cushion Length: ft	Water Salinity:	78000 ppm
Viscosity: 47.00 sec/qt	Cushion Volume: bbl		
Water Loss: 9.58 in ³	Gas Cushion Type:		
Resistivity: ohm.m	Gas Cushion Pressure: psig		
Salinity: 11000.00 ppm			
Filter Cake: 0.02 inches			

Recovery Information

Recovery Table

Length ft	Description	Volume bbl
0.00	186 GIP	0.000
62.00	GOMCW 4%G 4%O 24%M 68%W	0.870
92.00	GOCM 10%G 5%O 85%M	1.291

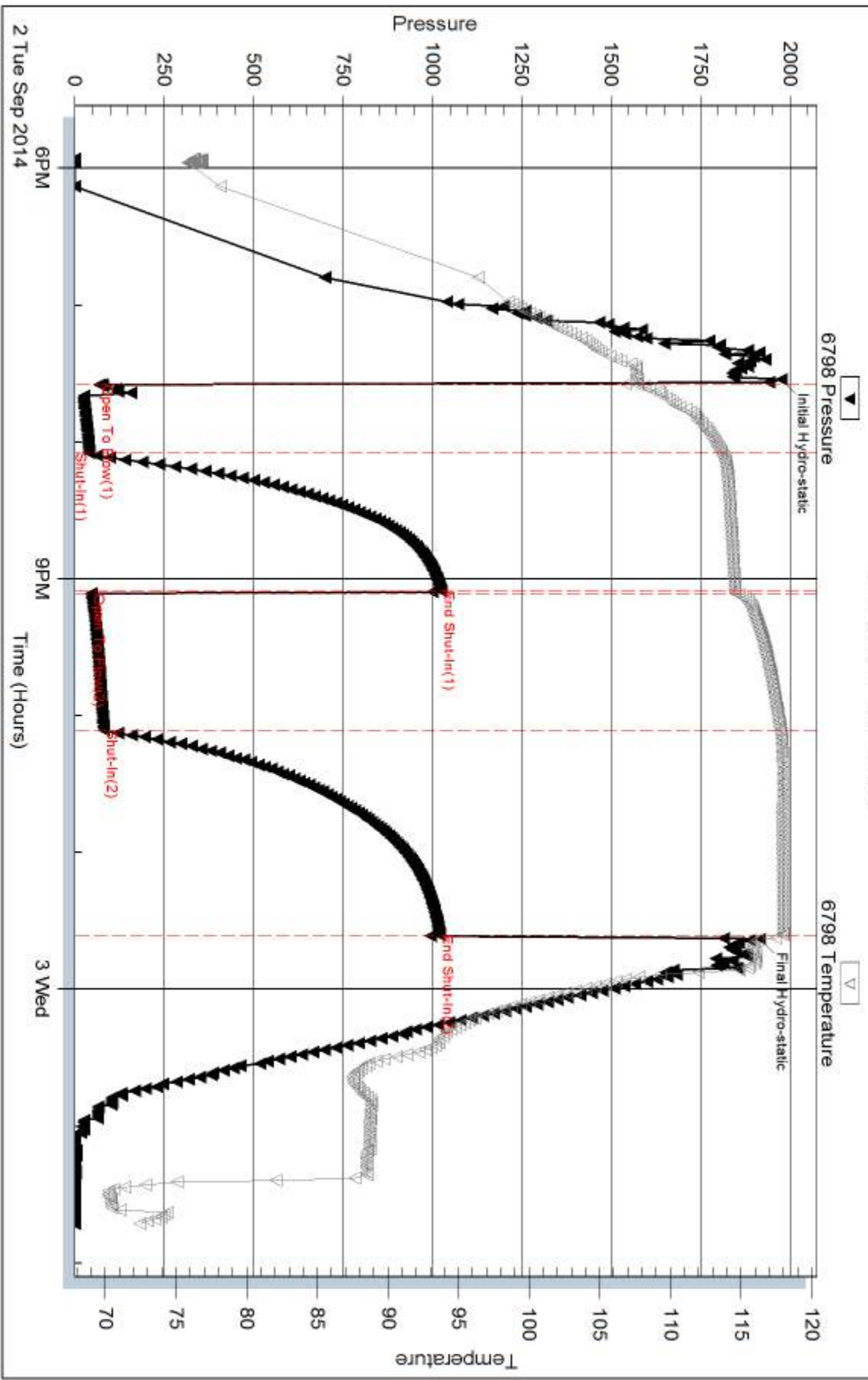
Total Length: 154.00 ft Total Volume: 2.161 bbl

Num Fluid Samples: 0 Num Gas Bombs: 0 Serial #:

Laboratory Name: Laboratory Location:

Recovery Comments: RW w as .1 @ 70 degrees

Pressure vs. Time

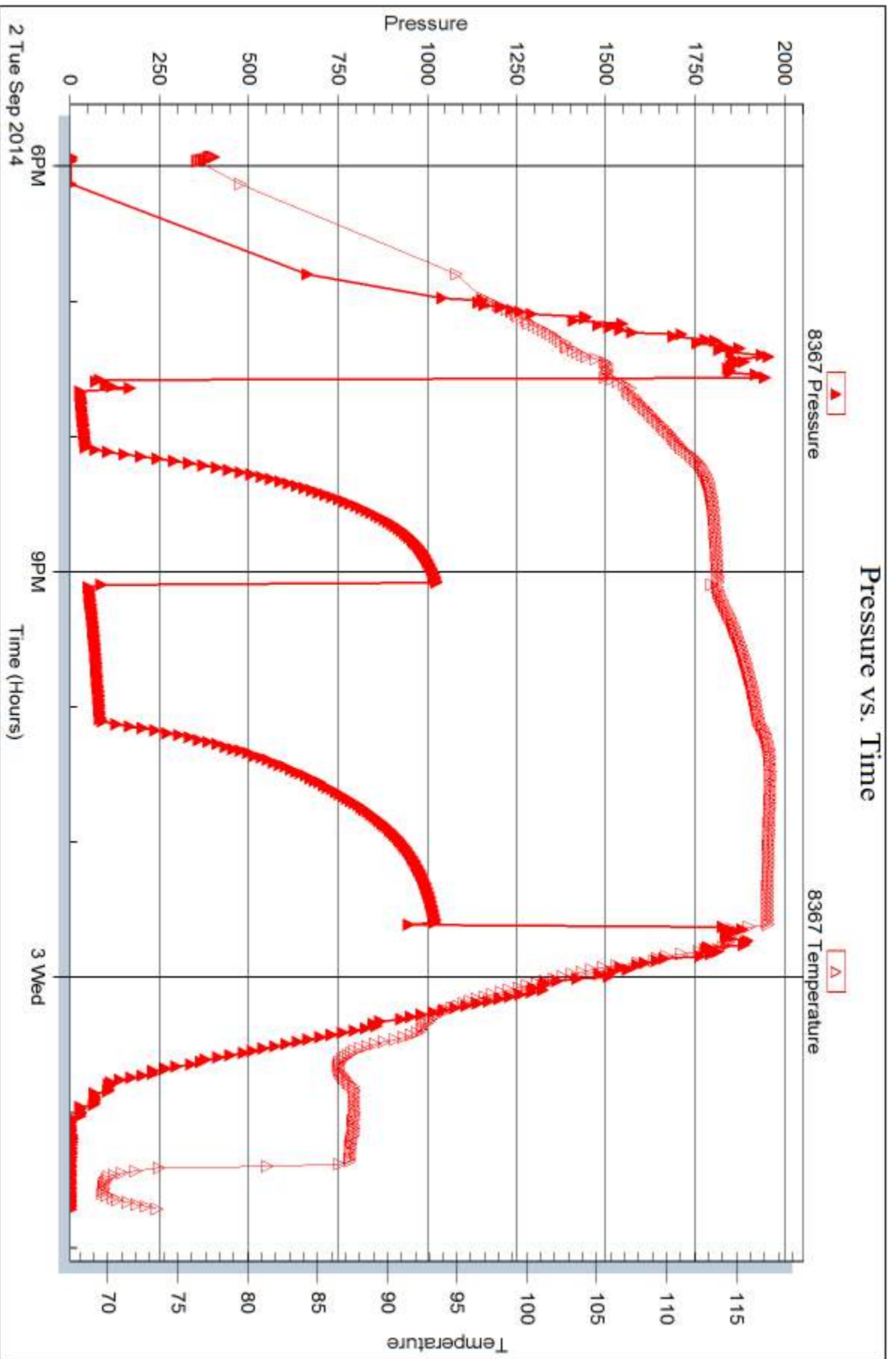


Serial #: 8367

Outside American Warrior Inc

4-265-31w PrattKS

DST Test Number: 2





DRILL STEM TEST REPORT

Prepared For: **American Warrior Inc**

PO Box 399
Garden City, KS 67846

ATTN: Logan Walker

4-26s-31w Pratt,KS

Weingartner-Slicker #1-4

Start Date: 2014.09.03 @ 20:31:00

End Date: 2014.09.04 @ 04:07:15

Job Ticket #: 57754 DST #: 3

Trilobite Testing, Inc
1515 Commerce Parkway Hays, KS 67601
ph: 785-625-4778 fax: 785-625-5620

Printed: 2014.09.08 @ 11:05:58

American Warrior Inc

Weingartner-Slicker #1-4

4-26s-31w Pratt,KS

DST # 3

LKC "I, J, K"

2014.09.03



TRILOBITE TESTING, INC

DRILL STEM TEST REPORT

American Warrior Inc
PO Box 399
Garden City, KS 67846
ATTN: Logan Walker

Weingartner-Slicker #1-4

4-26s-31w Pratt,KS

Job Ticket: 57754

DST#: 3

Test Start: 2014.09.03 @ 20:31:00

GENERAL INFORMATION:

Formation: **LKC "I, J, K"**

Deviated: Yes Whipstock: ft (KB)

Time Tool Opened: 22:12:15

Time Test Ended: 04:07:15

Test Type: Conventional Bottom Hole (Reset)

Tester: Leal Cason

Unit No: 74

Interval: 3898.00 ft (KB) To 4034.00 ft (KB) (TVD)

Reference Elevations: 1948.00 ft (KB)

Total Depth: 4034.00 ft (KB) (TVD)

1936.00 ft (CF)

Hole Diameter: 7.88 inches Hole Condition: Good

KB to GR/CF: 12.00 ft

Serial #: 6798

Inside

Press@RunDepth: 54.91 psig @ ft (KB)

Capacity: 8000.00 psig

Start Date: 2014.09.03

End Date:

2014.09.04

Last Calib.: 2014.09.04

Start Time: 20:31:01

End Time:

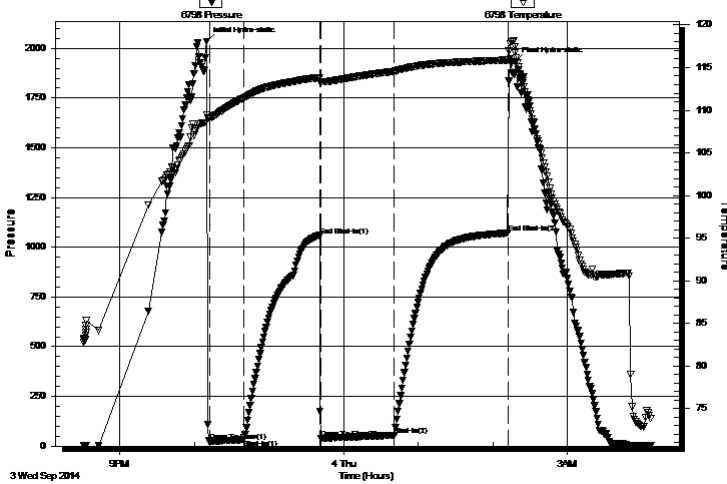
04:07:15

Time On Btm: 2014.09.03 @ 22:09:45

Time Off Btm: 2014.09.04 @ 02:18:00

TEST COMMENT: IF: Strong Blow , BOB in 3 minutes
IS: 3" Blow Back
FF: Strong Blow , BOB in 10 seconds
FS: GTS During Bleed Off, Weak Surface Blow Back

Pressure vs. Time



PRESSURE SUMMARY

Time (Min.)	Pressure (psig)	Temp (deg F)	Annotation
0	2035.20	109.41	Initial Hydro-static
3	23.35	109.11	Open To Flow (1)
31	32.55	111.43	Shut-In(1)
91	1059.30	113.82	End Shut-In(1)
92	37.80	113.36	Open To Flow (2)
151	54.91	114.56	Shut-In(2)
243	1071.03	115.89	End Shut-In(2)
249	1933.26	116.72	Final Hydro-static

Recovery

Length (ft)	Description	Volume (bbl)
0.00	3784 GIP	0.00
90.00	GCM 2%G 98%M	1.26

Gas Rates

	Choke (inches)	Pressure (psig)	Gas Rate (Mcf/d)
--	----------------	-----------------	------------------

* Recovery from multiple tests



DRILL STEM TEST REPORT

American Warrior Inc
 PO Box 399
 Garden City, KS 67846
 ATTN: Logan Walker

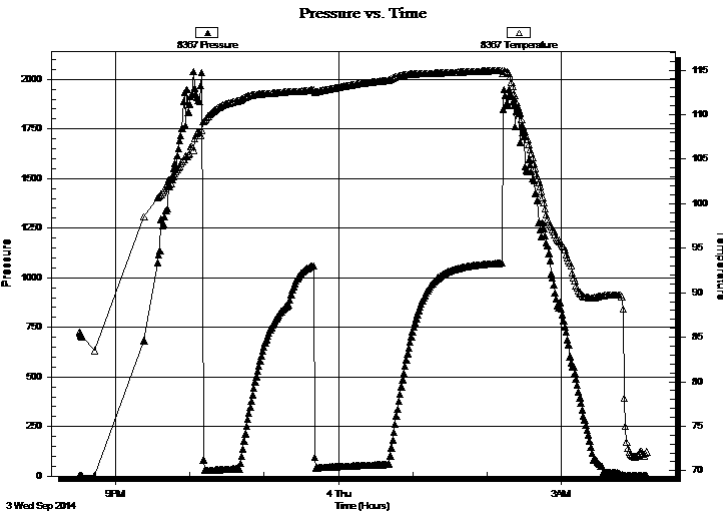
Weingartner-Slicker #1-4
4-26s-31w Pratt,KS
 Job Ticket: 57754 **DST#: 3**
 Test Start: 2014.09.03 @ 20:31:00

GENERAL INFORMATION:

Formation: **LKC "I, J, K"**
 Deviated: Yes Whipstock: ft (KB)
 Time Tool Opened: 22:12:15
 Time Test Ended: 04:07:15
 Interval: **3898.00 ft (KB) To 4034.00 ft (KB) (TVD)**
 Total Depth: 4034.00 ft (KB) (TVD)
 Hole Diameter: 7.88 inches Hole Condition: Good
 Test Type: Conventional Bottom Hole (Reset)
 Tester: Leal Cason
 Unit No: 74
 Reference Elevations: 1948.00 ft (KB)
 1936.00 ft (CF)
 KB to GR/CF: 12.00 ft

Serial #: 8367 Outside
 Press@RunDepth: psig @ ft (KB) Capacity: 8000.00 psig
 Start Date: 2014.09.03 End Date: 2014.09.04 Last Calib.: 2014.09.04
 Start Time: 20:31:01 End Time: 04:08:45 Time On Btm:
 Time Off Btm:

TEST COMMENT: IF: Strong Blow , BOB in 3 minutes
 IS: 3" Blow Back
 FF: Strong Blow , BOB in 10 seconds
 FS: GTS During Bleed Off, Weak Surface Blow Back



PRESSURE SUMMARY

Time (Min.)	Pressure (psig)	Temp (deg F)	Annotation

Recovery

Length (ft)	Description	Volume (bbl)
0.00	3784 GIP	0.00
90.00	GCM 2%G 98%M	1.26

* Recovery from multiple tests

Gas Rates

Choke (inches)	Pressure (psig)	Gas Rate (Mcf/d)



**TRILOBITE
TESTING, INC**

DRILL STEM TEST REPORT

TOOL DIAGRAM

American Warrior Inc
PO Box 399
Garden City, KS 67846
ATTN: Logan Walker

Weingartner-Slicker #1-4
4-26s-31w Pratt,KS
Job Ticket: 57754 **DST#: 3**
Test Start: 2014.09.03 @ 20:31:00

Tool Information

Drill Pipe:	Length: 3874.00 ft	Diameter: 3.80 inches	Volume: 54.34 bbl	Tool Weight: 2100.00 lb
Heavy Wt. Pipe:	Length: 0.00 ft	Diameter: 0.00 inches	Volume: 0.00 bbl	Weight set on Packer: 25000.00 lb
Drill Collar:	Length: 0.00 ft	Diameter: 2.25 inches	Volume: 0.00 bbl	Weight to Pull Loose: 80000.00 lb
			<u>Total Volume: 54.34 bbl</u>	Tool Chased ft
Drill Pipe Above KB:	2.00 ft			String Weight: Initial 50000.00 lb
Depth to Top Packer:	3898.00 ft			Final 51000.00 lb
Depth to Bottom Packer:	ft			
Interval between Packers:	136.00 ft			
Tool Length:	162.00 ft			
Number of Packers:	2	Diameter: 6.75 inches		

Tool Comments:

Tool Description	Length (ft)	Serial No.	Position	Depth (ft)	Accum. Lengths
-------------------------	--------------------	-------------------	-----------------	-------------------	-----------------------

Shut In Tool	5.00			3877.00	
Hydraulic tool	5.00			3882.00	
Jars	5.00			3887.00	
Safety Joint	2.00			3889.00	
Packer	5.00			3894.00	26.00 Bottom Of Top Packer
Packer	4.00			3898.00	
Stubb	1.00			3899.00	
Recorder	0.00	6798	Inside	3899.00	
Recorder	0.00	8367	Outside	3899.00	
Perforations	4.00			3903.00	
Change Over Sub	1.00			3904.00	
Drill Pipe	126.00			4030.00	
Change Over Sub	1.00			4031.00	
Bullnose	3.00			4034.00	136.00 Bottom Packers & Anchor

Total Tool Length: 162.00



**TRILOBITE
TESTING, INC**

DRILL STEM TEST REPORT

FLUID SUMMARY

American Warrior Inc
PO Box 399
Garden City, KS 67846
ATTN: Logan Walker

Weingartner-Slicker #1-4
4-26s-31w Pratt,KS
Job Ticket: 57754 **DST#: 3**
Test Start: 2014.09.03 @ 20:31:00

Mud and Cushion Information

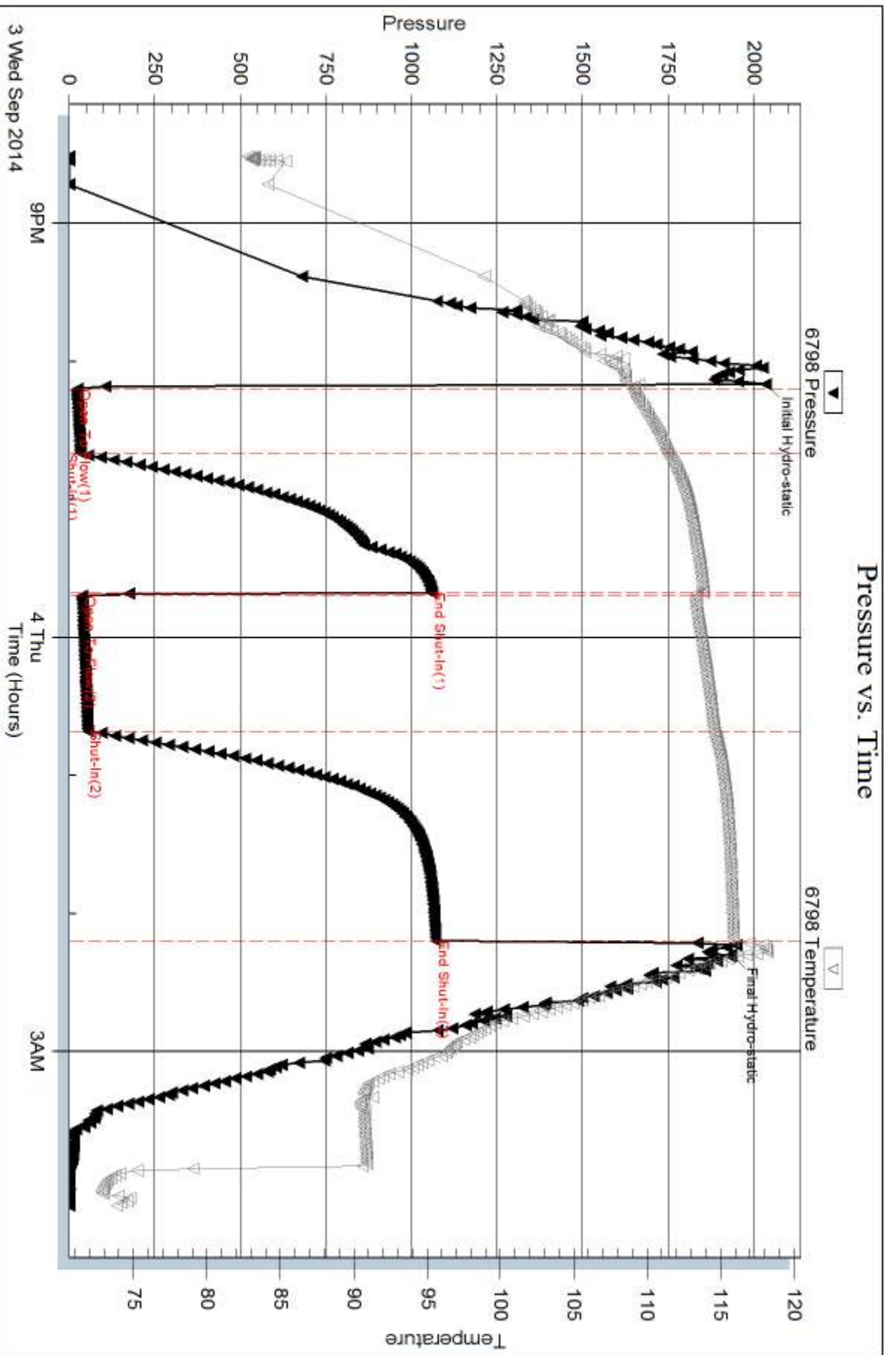
Mud Type: Gel Chem	Cushion Type:	Oil API:	deg API
Mud Weight: 10.00 lb/gal	Cushion Length: ft	Water Salinity:	ppm
Viscosity: 63.00 sec/qt	Cushion Volume: bbl		
Water Loss: 10.77 in ³	Gas Cushion Type:		
Resistivity: ohm.m	Gas Cushion Pressure: psig		
Salinity: 13000.00 ppm			
Filter Cake: 0.02 inches			

Recovery Information

Recovery Table

Length ft	Description	Volume bbl
0.00	3784 GIP	0.000
90.00	GCM 2%G 98%M	1.262

Total Length: 90.00 ft Total Volume: 1.262 bbl
 Num Fluid Samples: 0 Num Gas Bombs: 0 Serial #:
 Laboratory Name: Laboratory Location:
 Recovery Comments:

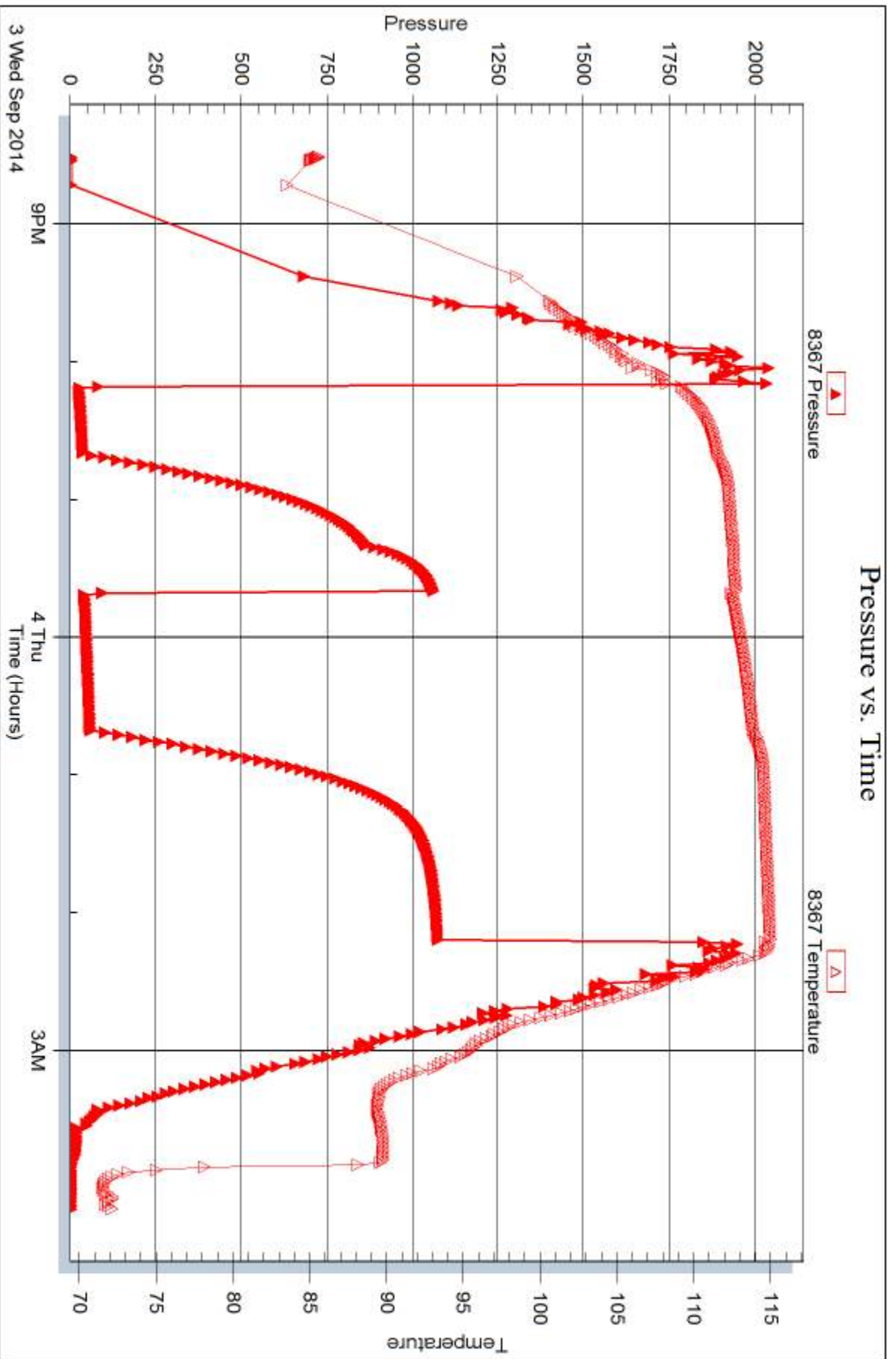


Serial #: 8367

Outside American Warrior Inc

4-265-31w Patl:KS

DST Test Number: 3



Trilobite Testing, Inc

Ref. No: 57754

Printed: 2014.09.08 @ 11:05:59



DRILL STEM TEST REPORT

Prepared For: **American Warrior Inc**

PO Box 399
Garden City, KS 67846

ATTN: Logan Walker

4-26s-31w Pratt,KS

Weingartner-Slicker #1-4

Start Date: 2014.09.04 @ 20:44:02

End Date: 2014.09.05 @ 04:27:02

Job Ticket #: 57755 DST #: 4

Trilobite Testing, Inc
1515 Commerce Parkway Hays, KS 67601
ph: 785-625-4778 fax: 785-625-5620

Printed: 2014.09.08 @ 11:05:15

American Warrior Inc

Weingartner-Slicker #1-4

4-26s-31w Pratt,KS

DST # 4

Marmaton/Mississippi

2014.09.04



TRILOBITE TESTING, INC

DRILL STEM TEST REPORT

American Warrior Inc
 PO Box 399
 Garden City, KS 67846
 ATTN: Logan Walker

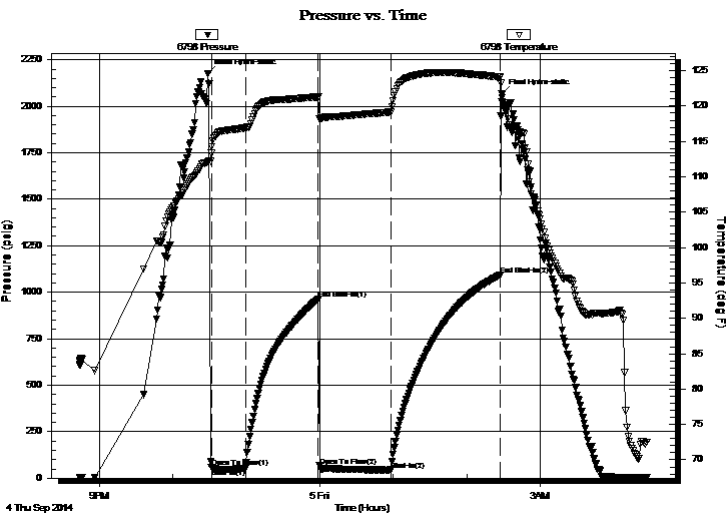
Weingartner-Slicker #1-4
4-26s-31w Pratt,KS
 Job Ticket: 57755 **DST#: 4**
 Test Start: 2014.09.04 @ 20:44:02

GENERAL INFORMATION:

Formation: **Marmaton/Mississippi**
 Deviated: Yes Whipstock: ft (KB) Test Type: Conventional Bottom Hole (Reset)
 Time Tool Opened: 22:31:32 Tester: Leal Cason
 Time Test Ended: 04:27:02 Unit No: 74
 Interval: **4076.00 ft (KB) To 4166.00 ft (KB) (TVD)** Reference Elevations: 1948.00 ft (KB)
 Total Depth: 4166.00 ft (KB) (TVD) 1936.00 ft (CF)
 Hole Diameter: 7.88 inches Hole Condition: Good KB to GR/CF: 12.00 ft

Serial #: 6798 Inside
 Press@RunDepth: 44.79 psig @ ft (KB) Capacity: 8000.00 psig
 Start Date: 2014.09.04 End Date: 2014.09.05 Last Calib.: 2014.09.05
 Start Time: 20:44:03 End Time: 04:27:02 Time On Btm: 2014.09.04 @ 22:28:47
 Time Off Btm: 2014.09.05 @ 02:28:32

TEST COMMENT: IF: Strong Blow , BOB in 1 minute
 IS: 3" Blow Back
 FF: Strong Blow , BOB immediate, GTS in 3 minutes, Caught Sample, TSTM
 FS: No Blow Back



PRESSURE SUMMARY

Time (Min.)	Pressure (psig)	Temp (deg F)	Annotation
0	2177.10	112.15	Initial Hydro-static
3	56.59	113.35	Open To Flow (1)
31	51.54	116.93	Shut-In(1)
90	963.21	121.26	End Shut-In(1)
92	61.59	118.10	Open To Flow (2)
149	44.79	119.12	Shut-In(2)
239	1092.00	124.08	End Shut-In(2)
240	2065.93	120.66	Final Hydro-static

Recovery

Length (ft)	Description	Volume (bbl)
0.00	GTS	0.00
62.00	GCM 1%G 99%M	0.87

* Recovery from multiple tests

Gas Rates

	Choke (inches)	Pressure (psig)	Gas Rate (Mcf/d)



**TRILOBITE
TESTING, INC**

DRILL STEM TEST REPORT

TOOL DIAGRAM

American Warrior Inc
PO Box 399
Garden City, KS 67846
ATTN: Logan Walker

Weingartner-Slicker #1-4
4-26s-31w Pratt,KS
Job Ticket: 57755 **DST#: 4**
Test Start: 2014.09.04 @ 20:44:02

Tool Information

Drill Pipe:	Length: 4062.00 ft	Diameter: 3.80 inches	Volume: 56.98 bbl	Tool Weight:	2100.00 lb
Heavy Wt. Pipe:	Length: 0.00 ft	Diameter: 0.00 inches	Volume: 0.00 bbl	Weight set on Packer:	25000.00 lb
Drill Collar:	Length: 0.00 ft	Diameter: 2.25 inches	Volume: 0.00 bbl	Weight to Pull Loose:	85000.00 lb
			<u>Total Volume: 56.98 bbl</u>	Tool Chased	ft
Drill Pipe Above KB:	12.00 ft			String Weight: Initial	54000.00 lb
Depth to Top Packer:	4076.00 ft			Final	54000.00 lb
Depth to Bottom Packer:	ft				
Interval between Packers:	90.00 ft				
Tool Length:	116.00 ft				
Number of Packers:	2	Diameter: 6.75 inches			

Tool Comments:

Tool Description	Length (ft)	Serial No.	Position	Depth (ft)	Accum. Lengths
------------------	-------------	------------	----------	------------	----------------

Shut In Tool	5.00			4055.00	
Hydraulic tool	5.00			4060.00	
Jars	5.00			4065.00	
Safety Joint	2.00			4067.00	
Packer	5.00			4072.00	26.00 Bottom Of Top Packer
Packer	4.00			4076.00	
Stubb	1.00			4077.00	
Recorder	0.00	6798	Inside	4077.00	
Recorder	0.00	8367	Outside	4077.00	
Perforations	6.00			4083.00	
Change Over Sub	1.00			4084.00	
Drill Pipe	63.00			4147.00	
Change Over Sub	1.00			4148.00	
Perforations	15.00			4163.00	
Bullnose	3.00			4166.00	90.00 Bottom Packers & Anchor

Total Tool Length: 116.00



**TRILOBITE
TESTING, INC**

DRILL STEM TEST REPORT

FLUID SUMMARY

American Warrior Inc
PO Box 399
Garden City, KS 67846
ATTN: Logan Walker

Weingartner-Slicker #1-4
4-26s-31w Pratt,KS
Job Ticket: 57755 **DST#: 4**
Test Start: 2014.09.04 @ 20:44:02

Mud and Cushion Information

Mud Type: Gel Chem	Cushion Type:	Oil API:	deg API
Mud Weight: 10.00 lb/gal	Cushion Length: ft	Water Salinity:	ppm
Viscosity: 63.00 sec/qt	Cushion Volume: bbl		
Water Loss: 10.77 in ³	Gas Cushion Type:		
Resistivity: ohm.m	Gas Cushion Pressure: psig		
Salinity: 13000.00 ppm			
Filter Cake: 0.02 inches			

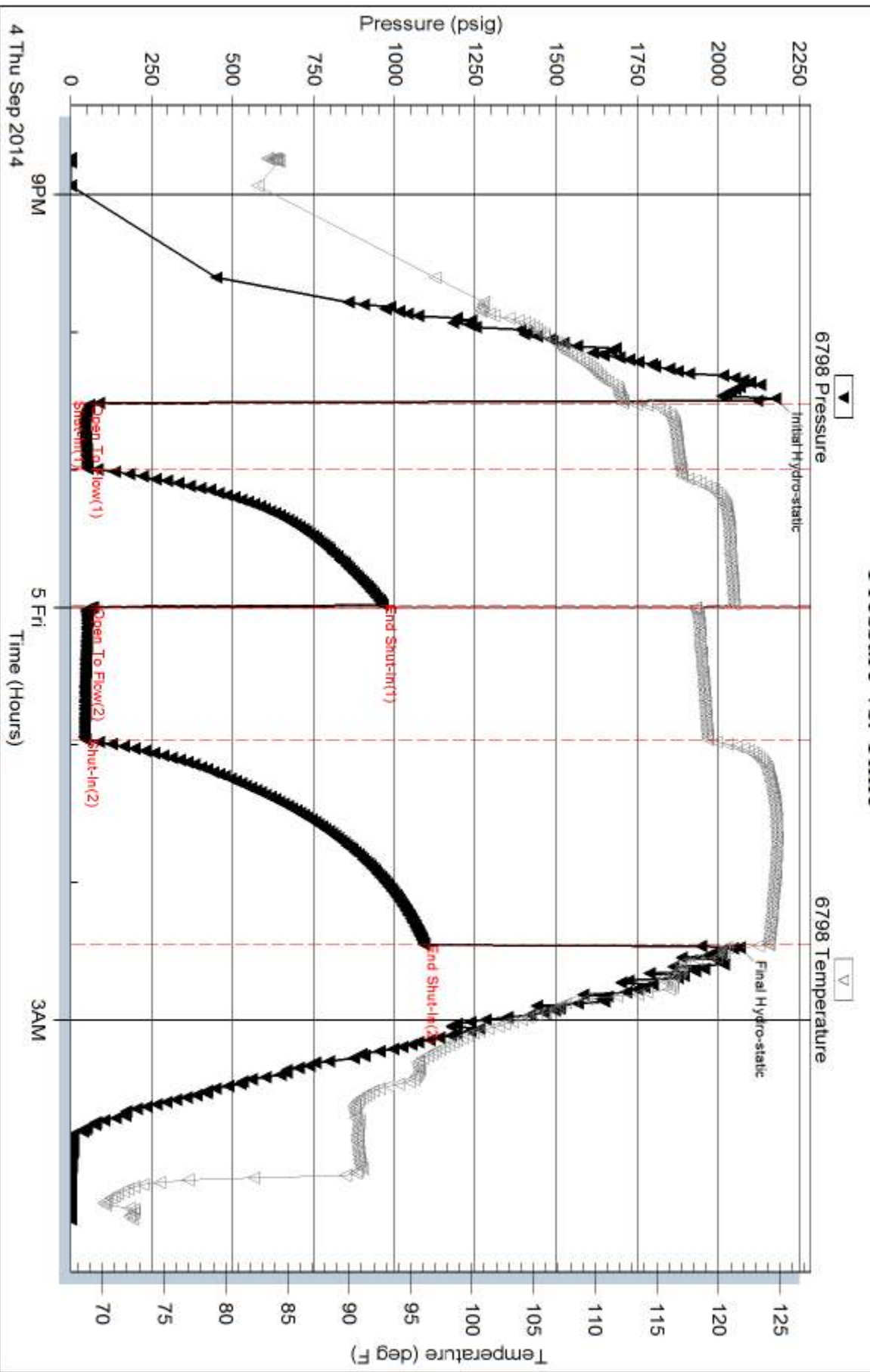
Recovery Information

Recovery Table

Length ft	Description	Volume bbl
0.00	GTS	0.000
62.00	GCM 1%G 99%M	0.870

Total Length: 62.00 ft Total Volume: 0.870 bbl
Num Fluid Samples: 0 Num Gas Bombs: 0 Serial #:
Laboratory Name: Laboratory Location:
Recovery Comments:

Pressure vs. Time

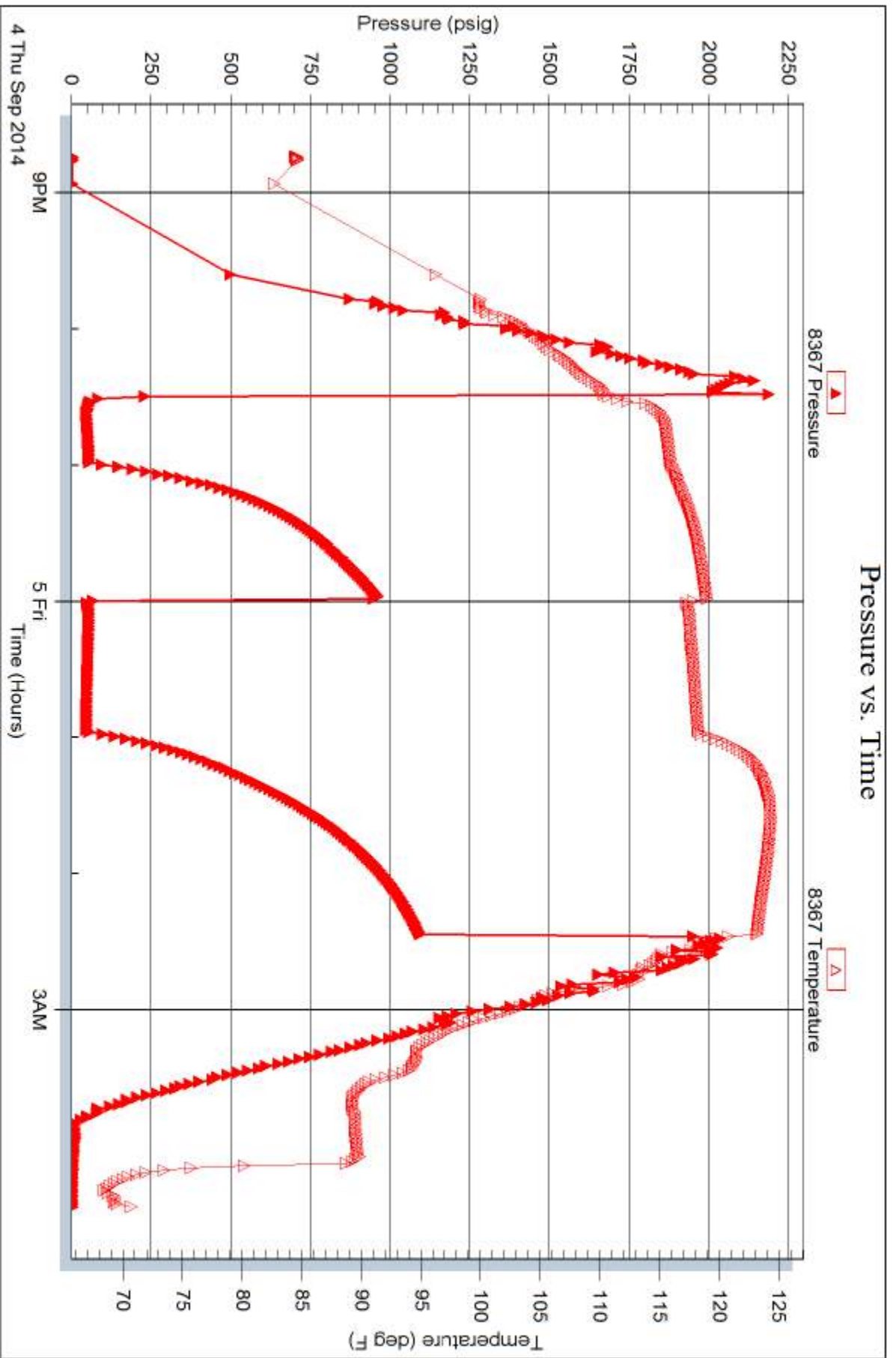


Serial #: 8367

Outside American Warrior Inc

4-265-31w Patl:KS

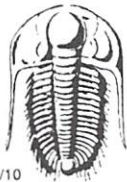
DST Test Number: 4



Trilobite Testing, Inc

Ref. No: 57755

Printed: 2014.09.08 @ 11:05:17



TRILOBITE TESTING INC.

1515 Commerce Parkway • Hays, Kansas 67601

Test Ticket

NO. 57752

4/10

Well Name & No. Weingartner-Slicker 1-4 Test No. 1 Date 09/01/14
 Company American Warrior inc Elevation 1948 KB 1936 GL
 Address PO Box 399 Garden City, KS 67846
 Co. Rep / Geo. Logan Walker Rig Duke 1
 Location: Sec. 4 Twp. 26S Rge. 31W Co. Pratt State KS

Interval Tested 3771 - 3826 Zone Tested Lansing "F+G"
 Anchor Length 55 Drill Pipe Run 3750 Mud Wt. 9.5
 Top Packer Depth 3766 Drill Collars Run 0 Vis 63
 Bottom Packer Depth 3771 Wt. Pipe Run 0 WL 10.8
 Total Depth 3826 Chlorides 13000 ppm System LCM 1

Blow Description IF: Strong Blow, BOB in 20 seconds, GTS in 6 minutes Gauged Gas
ASI: 4 inch Blow Back

FF: Strong Blow, BOB + GTS Immediate Gauged + Caught Sample

FSI: 1 inch Blow Back

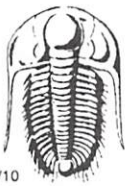
Rec	Feet of	%gas	%oil	%water	%mud
<u>3400</u>	<u>GIP</u>				
<u>164</u>	<u>60 MCW</u>	<u>5</u>	<u>2</u>	<u>15</u>	<u>78</u>
<u>186</u>	<u>60 MCW</u>	<u>30</u>	<u>10</u>	<u>40</u>	<u>20</u>
Rec	Feet of	%gas	%oil	%water	%mud
Rec	Feet of	%gas	%oil	%water	%mud

Rec Total 350 BHT 110 Gravity N/C API RW 0.09 @ 72 °F Chlorides 85000 ppm

(A) Initial Hydrostatic 1958 Test 1150 T-On Location 20:00
 (B) First Initial Flow 222 Jars 250 T-Started 21:14
 (C) First Final Flow 452 Safety Joint 75 T-Open 23:13
 (D) Initial Shut-In 1087 Circ Sub _____ T-Pulled 03:12
 (E) Second Initial Flow 230 Hourly Standby _____ T-Out 05:45
 (F) Second Final Flow 299 Mileage (30) 46.50 Comments _____
 (G) Final Shut-In 1080 Sampler _____
 (H) Final Hydrostatic 2011 Straddle _____
 Shale Packer _____
 Shale Packer _____
 Extra Packer _____
 Extra Recorder _____
 Day Standby _____
 Accessibility _____
 Sub Total 1521.50

Approved By _____ Our Representative [Signature]

TriLOBITE TESTING INC. shall not be liable for damaged of any kind of the property or personnel of the one for whom a test is made, or for any loss suffered or sustained, directly or indirectly, through the use of its equipment, or its statements or opinion concerning the results of any test, tools lost or damaged in the hole shall be paid for at cost by the party for whom the test is made.



TRILOBITE TESTING INC.

1515 Commerce Parkway • Hays, Kansas 67601

Test Ticket

NO. 57753

4/10

Well Name & No. Weingartner-Slicker 1-4 Test No. 2 Date 09/02/14
 Company American warrior inc Elevation 1948 KB 1936 GL
 Address PO Box 399 Garden City, ~~MO~~ KS 67846
 Co. Rep / Geo. Logan Walker Rig Duke 1
 Location: Sec. 4 Twp. 26S Rge. 31W Co. Pratt State Ks

Interval Tested 3868 - 3893 Zone Tested Lansing "H"
 Anchor Length 25 Drill Pipe Run 3873 Mud Wt. 9.4
 Top Packer Depth 3863 Drill Collars Run 0 Vis 47
 Bottom Packer Depth 3868 Wt. Pipe Run 0 WL 9.6
 Total Depth 3893 Chlorides 11000 ppm System LCM 1

Blow Description IF: Fair Blow, BOB in 5 minutes
ISF: NO Blow Back
FF: strong Blow, BOB in 3 minutes
FSI: NO Blow Back

Rec	Feet of	%gas	%oil	%water	%mud
<u>186</u>	<u>GIP</u>				
<u>92</u>	<u>GOCM</u>	<u>10</u>	<u>5</u>	<u>85</u>	
<u>62</u>	<u>GOMCW</u>	<u>4</u>	<u>4</u>	<u>68</u>	<u>24</u>
<u>48</u>					

Rec Total 154 BHT 118 Gravity NIC API RW .1 @ 70 ° F Chlorides 78000 ppm

(A) Initial Hydrostatic 1977 Test 1150 T-On Location 17:00
 (B) First Initial Flow 70 Jars 250 T-Started 17:55
 (C) First Final Flow 41 Safety Joint 75 T-Open 19:34
 (D) Initial Shut-In 1024 Circ Sub _____ T-Pulled 23:36
 (E) Second Initial Flow 46 Hourly Standby _____ T-Out 01:42
 (F) Second Final Flow 83 Mileage 46.50 30 Comments _____
 (G) Final Shut-In 1020 Sampler _____
 (H) Final Hydrostatic 1917 Straddle _____

Ruined Shale Packer _____
 Shale Packer _____
 Ruined Packer _____
 Extra Packer _____
 Extra Copies _____
 Extra Recorder _____
 Day Standby _____
 Accessibility _____
 Sub Total 1521.50
 Total 1521.50
 MP/DST Disc't _____

Approved By _____ Our Representative [Signature]

TriLOBite Testing Inc. shall not be liable for damaged of any kind of the property or personnel of the one for whom a test is made, or for any loss suffered or sustained, directly or indirectly, through the use of its equipment, or its statements or opinion concerning the results of any test, tools lost or damaged in the hole shall be paid for at cost by the party for whom the test is made.



TRILOBITE TESTING INC.

1515 Commerce Parkway • Hays, Kansas 67601

Test Ticket

NO. 57754

Well Name & No. Weingartner - Slicker 1-4 Test No. 3 Date 09/03/14
 Company American Warrior Inc Elevation 1948 KB 1936 GL
 Address PO BOX 399 Garden City, KS 67846
 Co. Rep / Geo. Logan Walker Rig Duke 1
 Location: Sec. 4 Twp. 265 Rge. 31w Co. Pratt State Ks

Interval Tested 3898 - 4034 Zone Tested Lansing "E, J, K"
 Anchor Length 136 Drill Pipe Run 3874 Mud Wt. 9.0
 Top Packer Depth 3893 Drill Collars Run 0 Vis 55
 Bottom Packer Depth 3898 Wt. Pipe Run 0 WL 9.6
 Total Depth 4034 Chlorides 10,500 ppm System LCM 1

Blow Description IF: strong Blow, BOB in 3 minutes
IST: 3 inch Blow Back

FF: strong Blow, BOB in 10 seconds
FSI: GTS During Bleed off, weak surface Blow Back

Rec	Feet of	%gas	%oil	%water	%mud
<u>3784</u>	<u>GIP</u>				
<u>90</u>	<u>GCM</u>	<u>2</u>			<u>98</u>

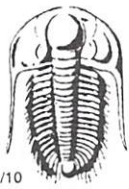
Rec Total 90 BHT 116 Gravity NIC API RW NIC @ NIC °F Chlorides NIC ppm

(A) Initial Hydrostatic	<u>2035</u>	<input checked="" type="checkbox"/> Test	<u>1250</u>	T-On Location	<u>19:30</u>
(B) First Initial Flow	<u>23</u>	<input checked="" type="checkbox"/> Jars	<u>250</u>	T-Started	<u>20:31</u>
(C) First Final Flow	<u>33</u>	<input checked="" type="checkbox"/> Safety Joint	<u>75</u>	T-Open	<u>22:12</u>
(D) Initial Shut-In	<u>1059</u>	<input type="checkbox"/> Circ Sub		T-Pulled	<u>02:12</u>
(E) Second Initial Flow	<u>38</u>	<input type="checkbox"/> Hourly Standby		T-Out	<u>04:07</u>
(F) Second Final Flow	<u>55</u>	<input checked="" type="checkbox"/> Mileage	<u>30</u> 46.50	Comments	
(G) Final Shut-In	<u>1071</u>	<input type="checkbox"/> Sampler			
(H) Final Hydrostatic	<u>1933</u>	<input type="checkbox"/> Straddle		<input type="checkbox"/> Ruined Shale Packer	

Initial Open	<u>30</u>	<input type="checkbox"/> Shale Packer		<input type="checkbox"/> Ruined Packer	
Initial Shut-In	<u>60</u>	<input type="checkbox"/> Extra Packer		<input type="checkbox"/> Extra Copies	
Final Flow	<u>60</u>	<input type="checkbox"/> Extra Recorder		Sub Total	<u>0</u>
Final Shut-In	<u>90</u>	<input type="checkbox"/> Day Standby		Total	<u>1621.50</u>
		<input type="checkbox"/> Accessibility		MP/DST Disc't	
		Sub Total	<u>1621.50</u>		

Approved By _____ Our Representative [Signature]

Trilobite Testing Inc. shall not be liable for damaged of any kind of the property or personnel of the one for whom a test is made, or for any loss suffered or sustained, directly or indirectly, through the use of its equipment, or its statements or opinion concerning the results of any test, tools lost or damaged in the hole shall be paid for at cost by the party for whom the test is made.



TRILOBITE TESTING INC.

1515 Commerce Parkway • Hays, Kansas 67601

Test Ticket

NO. 57755

Well Name & No. Weingartner - slicker 1-4 Test No. 4 Date 09/04/14
 Company American warrior inc Elevation 1948 KB 1936 GL
 Address PO Box 399 Garden City, KS 67846
 Co. Rep / Geo. Logan walker Rig Duke 1
 Location: Sec. 4 Twp. 26S Rge. 31W Co. Pratt, State KS

Interval Tested 4076 - 4166 Zone Tested Marmaton / Mississippi
 Anchor Length 90 Drill Pipe Run 4062 Mud Wt. 8.9
 Top Packer Depth 4071 Drill Collars Run 0 Vis 62
 Bottom Packer Depth 4076 Wt. Pipe Run 0 WL 9.6
 Total Depth 4166 Chlorides 9000 ppm System LCM 1

Blow Description IF: strong blow, BOB in 1 minute
ISI: 3 inch Blow Back
FF: strong blow, BOB immediate, GTS in 3 minutes, caught sample, TSTM
FSI: NO Blow Back

Rec	Feet of	%gas	%oil	%water	%mud
<u>4000</u>	<u>GIP</u>				
<u>62</u>	<u>GCM</u>			<u>99</u>	

Rec Total 62 BHT 124 Gravity NIC API RW NIC @ NIC °F Chlorides NIC ppm

(A) Initial Hydrostatic <u>2177</u>	<input checked="" type="checkbox"/> Test <u>1250</u>	T-On Location <u>20:00</u>
(B) First Initial Flow <u>57</u>	<input checked="" type="checkbox"/> Jars <u>250</u>	T-Started <u>20:44</u>
(C) First Final Flow <u>52</u>	<input checked="" type="checkbox"/> Safety Joint <u>75</u>	T-Open <u>22:31</u>
(D) Initial Shut-In <u>963</u>	<input type="checkbox"/> Circ Sub	T-Pulled <u>02:27</u>
(E) Second Initial Flow <u>62</u>	<input type="checkbox"/> Hourly Standby	T-Out <u>04:27</u>
(F) Second Final Flow <u>45</u>	<input checked="" type="checkbox"/> Mileage <u>309</u> <u>46.50</u>	Comments <u>Released @</u>
(G) Final Shut-In <u>1092</u>	<input type="checkbox"/> Sampler <u>46.50</u>	<u>06:00 on 09/06/14</u>
(H) Final Hydrostatic <u>2066</u>	<input type="checkbox"/> Straddle	<input type="checkbox"/> Ruined Shale Packer
Initial Open <u>30</u>	<input type="checkbox"/> Shale Packer	<input type="checkbox"/> Ruined Packer
Initial Shut-In <u>60</u>	<input type="checkbox"/> Extra Packer	<input type="checkbox"/> Extra Copies
Final Flow <u>60</u>	<input type="checkbox"/> Extra Recorder	Sub Total <u>800</u>
Final Shut-In <u>90</u>	<input type="checkbox"/> Day Standby <u>1d 1.5h</u>	Total <u>2468.00</u>
	<input type="checkbox"/> Accessibility	MP/DST Disc't
	Sub Total <u>1668.00</u>	

Approved By _____ Our Representative [Signature]

Trilobite Testing Inc. shall not be liable for damaged of any kind of the property or personnel of the one for whom a test is made, or for any loss suffered or sustained, directly or indirectly, through the use of its equipment, or its statements or opinion concerning the results of any test, tools lost or damaged in the hole shall be paid for at cost by the party for whom the test is made.