

Well Name: J.Behnke (OWWO) #1
 Surface Location: 2970' FSL .990' FEL SW/SE/NE
 Bottom Location:
 API: 15-159-03264-0001
 License Number:
 Spud Date: 5/30/2014 Time: 3:30 PM
 Region: Rice County 1 19S 10W
 Drilling Completed: 6/3/2014 Time: 12:00 AM
 Surface Coordinates:
 Bottom Hole Coordinates:
 Ground Elevation: 1712.00ft
 K.B. Elevation: 1717.00ft
 Logged Interval: 2700.00ft To: 3323.00ft
 Total Depth: 3327.00ft
 Formation: Arbuckle
 Drilling Fluid Type: Chem mud

OPERATOR

Company: Mark Allen Connell
 Address: 606 W. Albro St.
 Claflin, KS 67525
 Contact Geologist:
 Contact Phone Nbr:
 Well Name: J.Behnke (OWWO) #1
 Location: 2970' FSL .990' FEL SW/SE/NE API: 15-159-03264-0001
 Pool: Chase-Silica
 State: Kansas Country: United States

LOGGED BY

Company: Darrah Oil Co
 Address: 225 N. Market Suite #300
 Wichita, KS 67202
 Phone Nbr: (620) 953-2066
 Logged By: Geologist Name: Seth L. Evenson

CONTRACTOR

Contractor: Mallard J.V.
 Rig #: 1
 Rig Type: Standard Double
 Spud Date: 5/30/2014 Time: 3:30 PM
 TD Date: 6/3/2014 Time: 12:00 AM
 Rig Release: 6/4/2014 Time: 8:00 PM

NOTES**DST #1****Arbuckle**

3239' - 3250' corrected

20-20-30-25

IHP = 1627#

IFP = 17#

ISIP = 48#

FFP = 27.5#

FSIP = 107#

FHP = 1559#

BHT = 112 deg F

Rec:

5' Mud w/Show of free oil in tool

DST #2**Arbuckle**

3244' - 3263' corrected

15-30-15-30

IHP = 1623#

IFP = 182#

ISIP = 1104#

FFP = 923#

FSIP = 1103#

FHP = 1547#

BHT = 116 deg F

Rec:

1633' SO&GCMW (3% oil)
315' MW**DST #3****KC H zone (straddle)**

3016' - 3066' corrected

30-30-30-30

IHP = 1516#

IFP = 36#

ISIP = 720#

FFP = 189#

FSIP = 721#

FHP = 1468#

BHT = 109 deg F

Rec:

736' GJP
272' SOSMW (80% W w/o spks)

'1948' DST

Lansing G zone
2979' - 2983'

Rec:

270' W

OPEN HOLE LOGS

Logging Company: Pioneer Energy Services
 Logging Engineer: C. Desaire
 Truck #: 17
 Logging Date: 6/3/2014
 # Logs Run: 3
 Time Spent: 3.5
 # Logs Run Successful: 3

LOGS RUN

Tool	Logged Interval	Logged Interval	Hours	Remarks	Run #
DCP	2700.00ft	3302.00ft	0.00		1
DI	150.00ft	3323.00ft	0.00		1
MicroRes	2700.00ft	3323.00ft	0.00		2

LOGGING OPERATION SUMMARY

Date	From	To	Description Of Operation
6/18/2014	0.00ft	0.00ft	

CASING SUMMARY

	Surface	Intermediate	Main		
Bit Size					
Hole Size					
	Size	Set At	Type	# of Joints	Drilled Out At
Surf Casing					
Int Casing					
Prod Casing	5.5 in	3320 ft	LS 14#	79	6/16/2014 10:00 AM

CASING SEQUENCE

Type	Hole Size	Casing Size	At
	0.00 in	0.00	0.00 ft

ROCK TYPES

 Coal	 Lmst fw<7	 Shgy	 Ool grnst
 Congl	 Lmst fw>7	 Shblk	 Lscong
 Dolprim	 Mrlstdol	 Shcol	

ACCESSORIES

MINERAL	FOSSIL	STRINGER
∩ Glauconite	○ Oolites	■ Sandstone
P Pyrite		■ Shale
⊞ Chert nodules		
△ Chert White		

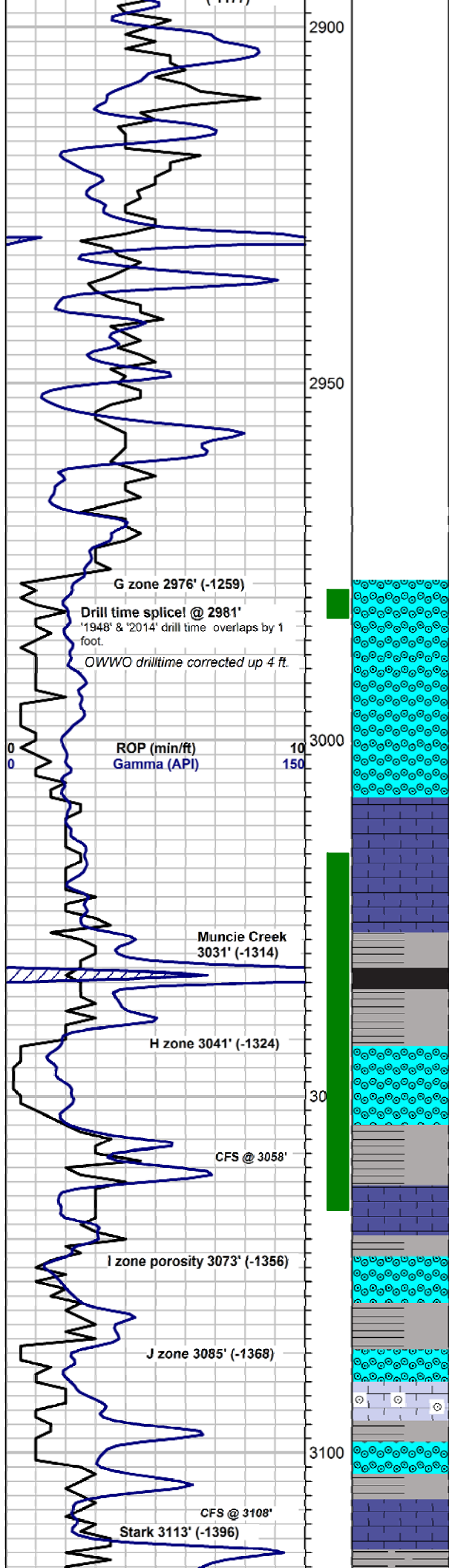
OTHER SYMBOLS

OIL SHOWS

- Even Stn
- Spotted Stn 50 - 75 %
- Spotted Stn 25 - 50 %
- Spotted Stn 1 - 25 %
- Questionable Stn
- D Dead Oil Stn
- Fluorescence



Depth In Cored Interval DST Interval	Interpretation	Oil Shows	Geological Descriptions	Comment	Vertical C
<p>1:240 Imperial</p> <p>ROP (min/ft)</p> <p>Gamma (API)</p> <p>Heebner 2747' (-1030)</p> <p>Toronto 2769' (-1052)</p> <p>Douglas 2780' (-1063)</p> <p>Start of '1948' Drill time @ 2799'; corrected up two feet from original.</p> <p>Brwn Lm 2869' (-1152)</p> <p>Lansing 2894' (-1177)</p>					



Note: Samples lagged approx. 10 ft. up-hole due to unusually long bottoms up time. Sample intervals are as caught.

2984-90': Shale & pyrite, hole slough. Sample of no value.

2990-95': Shale & pyrite as abv. Hole slough, sample no value.

2995'-3000': Hole slough as abv. Sample no value.

3000'-05': Slough, sample no value.

3005'-10': Slough, sample no value.

3010'-20': Slough, sample no value.

3020'-30': 95% shale & pyrite as abv. a few pcs tite lms, no vis por. 1 pc ool lms, tite, no vis por. Sample mst slough, vry pr quality

3030'-40': Lms, tan, vfn xtn, sft-med res, oomldc vugular, pr-fr vugular por, fr-gd intr xtn por. sli-fr lt brwn stn, sli grsy lstr. 1 pc w/hvy drk brwn stn. VSSG, poss trc vry lt FO. Pr quality sample.

3040'-50': Lms, mstly gry-tan, micro-vfn xtn, tite, med-hrd res, no vis por. Several pcs lms tan oomldc vugular, vfn xtn, med-hrd res, fr lt brwn stn, some pcs fr-gd vugular por. SSG, SSFO. fr shw FO in hrd tite pcs w/sprs vugs & por intrxtn por. Mst hrd, por pr & SSFO. sli odr.

3050'-58': Lms, tan-lt brwn, vfn-fn xtn, abndtly oomldc vugular, brt-med res, fr-gd por, fr lt brwn stn, fr shw rainbow oil on brk, trc drpits rainbow FO. SSG on brk. Vry sli odr. Sample quality still pr, mstl shale & pyrite.

3058'-70': Lms, tan-lt gry. Mst micro xtn, med-hrd res, non ool/oomldc w/no vis por. Some oomldc pcs becoming tighter, losing por. Some vry lt stn in these pcs. Several pcs as abv. gd por, gd sat & stn w/fr-gd grsy lstr & rainbow shw oil. Fr odr. 1 pc abndt drpits clr/rainbow oil vis under UV light.

3070'-80': Lms, tan-brwn, micro xtn, some sft-med res, sli chlky, mst med-hrd res, tite, few-no vis allochems, no vis por. Many pcs oomldc lms from abv w/sli-fr sat & stn, grsy lstr & sli rainbow shw oil. Sli odr. 80% porous pcs have sat.

3080'-90': Lms, tan-brwn, micro xtn, tite, as abv. Several pcs oomldc vugular lms, w/pr-gd por, sli-gd sat & a few w/gd drk blk stn in intr xtn por, sli-fr grsy lstr & sli shw rainbow oil. Sli odr.

3090'-3100': Lms tan-lt gry micro xtn, tite as abv. Many pcs lms, tan, vfn xtn, sli oomldc vugular, med res, pr-fr intr xtn & vuggy por. Fr-gd shw rainbow oil on brk, trc lt brwn FO, sli odr. Far fewer vugs & tighter intr xtn matrix than H zone samples, possible new zone.

3100'-3108': Lms, crm-tan/lt brwn, fn xtn, med res, ool/oomldc vugular, mst pcs partially dissolved ooids, pr vugular por. lt brwn even stn mst pcs, VSSG, sli shw rainbow oil on brk, sli odr.

3108'-3120': Lms, tan-brwn, vfn-fn xtn, sft-med res, Oomldc vugular, fr-gd vugular & intr xtn por. A few pcs w/gd-vry gd even sat & stn, gd grsy/rainbow lstr, gd shw rainbow oil. 1 pc bleeding gas upon brk, SSG overall. Fr sply dull yell/grn fluor, increased to 10-15% pcs, sli odr. Increase in drk blk lv stn. 1 pc w/trc brwn drpits FO. Maybe 2nd shw from lower J zn porosity? Mst pcs non-oomldc tite, no vis por as abv.

3120'-30': Lms, off wht-crm, micro-vfn xtn, abndtly ool & non oomldc, some abndtly oomldc w/fr-gd vugular por. NS. Several pcs lms tan, oomldc, pr fr

CFS @ 3058' 15 min: Lms, tan-lt brwn, vfn xtn, fryl oomldc vugular, med-hrd res, fr vugular & pr intr xtn por. sli-fr brwn stn & sat. VSSG.

CFS @ 3058' 30 min: Lms, lt brwn, vfn xtn, brt-med res, oomldc fr-gd vugular por, fr-vry gd intr xtn por. Several pcs w/fr-gd even lt brwn stn & sat, fr-gd shw rainbow oil on brk. SSG. A few pcs w/gd drk brwn stn in intr xtn por. Sli odr, fr even dull yell fluor. Many pcs have vry gd overall por w/stn.

CFS @ 3058' 45 min: Lms, tan-brwn, vfn xtn, brt-med res. Some sucrosic, Fr-abndtly oomldc vugular, gd-vry gd por, gd brwn stn & full sat, gd shw grsy lstr & gd shw rainbow oil on brk. Trc lt brwn FO, SSG on brk, fr odr, gd, brt, even yell/wht fluor. Zone looks promising. 1 pc w/poss barren por. 99% porosity has shw. Mny pcs lms tan-gry, micro xtn, tite, no vis por. Base of zone.

CFS 3108' 15 min: Lms, crm-brwn, vfn xtn, sft-med res, oomldc, fr-gd vugular por. Approx 50% pcs look barren, rest fr lt brwn stn & sli grsy lstr. SSG, vry sli shw rainbow oil on brk. fr even, dull yell fluor, vry sli odr. A couple pcs w/gd drk even sat & stn.

CFS @ 3108' 30 min: Lms, brwn, vfn-fn xtn, brt-med res, ool, sli oomldc vugular/sli odr. A few pcs w/ gd drk brwn even stn & grsy sat, Gd shw rainbow oil on brk, SSG, pr vugular & fr intr xtn por. sli odr. Several pcs w/gd oomldc vugular por, barnat. Increase in dns, tite gry-tan fn xtn lms w/no vis por.

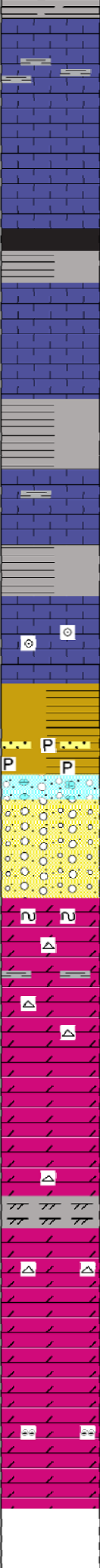
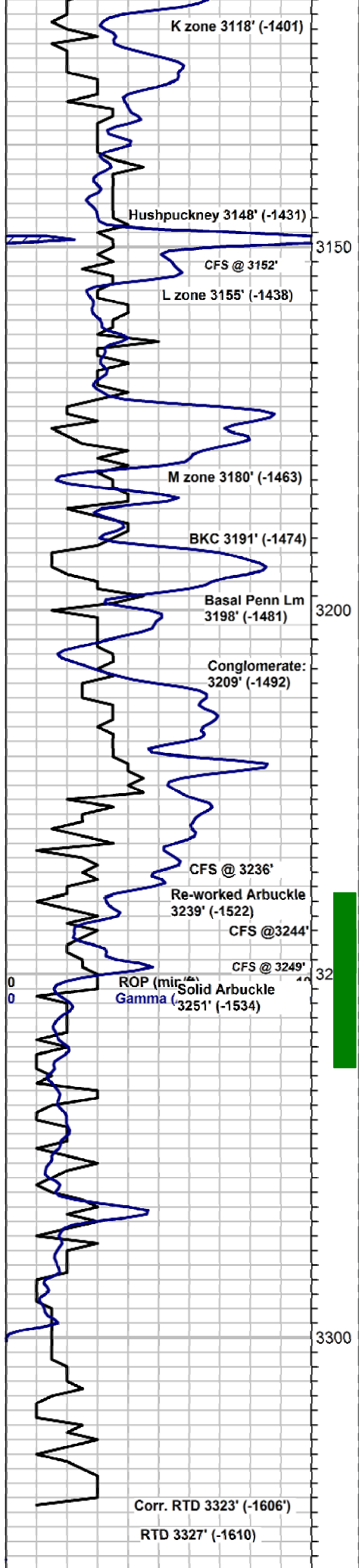
CFS @ 3108' 45 min: Lms, mstly, gry-tan, micro xtn, hrd res, no vis por, a few sli ool. A few pcs oomldc lms as abv. Some w/fr, lt even stn & sat, SSG & sli shw rainbow oil as abv. A couple pcs w/drk brwn lt oily stn in vugs. 1 pc w/trc lt brwn FO on brk. Some w/barren por. Sli odr. Mstly mineral fluor. losing por.

CFS @ 3108' 60 min: Lms mstly tan-gry micro xtn, no vis por as abv. A few pcs lms, lt brwn, oomldc vugular, w/pr-fr vugular & intr xtn, por. Fr-gd grsy/rainbow lstr, some w/drk lv stn in vugs. 1 pc hvly drk oil sat but vry hrd res, vry pr por. Sli odr. Could possibly be 2 separate J zn porosity benches.

CFS @ 3152' 15 min: Lms, tan-gry, micro-vfn xtn, med-hrd res, some ool to ool/semi-oomldc, many non-oomldc vugular only sli ool, pr-no vis por. Mst pcs NS. A few abndtly ool & semi-oomldc pcs w/sli to gd stn & sat. Fr odr on brk, pr por

CFS @ 3236': Conglomeritic section. Trc colored shaley lms, no vis por, prpl shale, blk, sndy/shaley/lmy conglm, prytized & hrd res. Trc cist pyritic SS, fn ang grains, hrd res, pr-no vis por. Shaley lms, pink-

Sample quality very poor
Sample quality very poor
Sample quality very poor



abundly oomldc w/abndtly vugular por. NS. Several pcs lms tan, oomldc, pr-fr por, w/sli-fr stn & sat, fr grsy lstr & rainbow oil, trc brwn drpits FO on brk 1 pcs. sli odr in sample.

3130'-40': Lms, off wht-crm abndtly oomldc vugular, mst fr-gd barren vugular por, pr intr xtn por, a few pcs w/fr scat blk lv stn in vugs, fr-gd shw grsy lstr & rainbow oil on brk. fr odr on brk w/SSG. Some ool, non vuggy lms as abv. Trc blk carb shale.

3140'-50': Lms, tan-gry, micro-vfn xtn, med-hrd res, sli ool, some semi-oomldc, mst pr-fr por. 1 pc abndtly oomldc lms gd por, w/vry gd drk brwn stn & sat, trc FO on brk, fr odr on brk, from up hole? Mst pcs NS.

3150'-60': Lms, gry, micro xtn, hrd res, sli ool, fr blk lv stn in scat non oomldc vugs & fractures. A few pcs tan-lt gry, fn-med xtn, calcitic lms, w/fr lt lv stn & SSFO & SSG on brk. Mst pcs tan-lt gry, sli ool to semi-oomldc, sli foss, hrd res pr-no vis por & NS.

3160'-70': Lms, brwn-lt gry micro-vfn xtn, mst non allochemical w/ pr-no vis por. Several pcs sli ool/oomldc vugular w/pr-vry pr por. 1 pc gry oomldc vugular lms w/gd vugular por & fr intr xtn por, FSFO on brk.

3170'-80': Lms gry, micr-vfn xtn, med-hrd res, sli foss, trc blk dead stn in foss & frac por. pr-no vis por. A few pcs micro xtn ool lms, non vuggy & no vis por.

3180'-90': Lms gry, vfn-fn xtn, med-hrd res, sli foss, pr-no vis por. Some xtn pyrite & increase in shale.

3190'-3200': Lms, tan, micro-vfn xtn, med res, some pcs ool & foss. Mst pr-no vis por. Trc blk carb shale. Some gry shale.

3200'-10': Lms, gry, some tan, micro xtn, med-hrd res, no vis por, few- no allochems. Also a few pcs oomldc vugular lms w/NS. Fr por. Increase in gry shales.

3210'-20': Lms, crm-lt gry, micro-vfn xtn, med res. Many pcs sli-frty oomldc vugular, pr-fr vugular por, pr matrix por, NS. Much shale, gry-drk gry, gry/grn & maroon

3220'-30': Mstly lms, tan-gry, vfn xtn, some ool to oomldc vugular, NS. Mst pcs tite, no vis por. Also shale, gry, grn, maroon, as abv.

3230'-40': Lms lt gry micro xtn, non allochemical, no vis por. Also much lms crm, ool/semi-oomldc, trc-sli foss, hrd res, pr-no vis por. Trc off wht foss chrt, sli weathered & frsh. A few pcs lms lt gry, vfn xtn, w/drck grn glauc inclusions/attachments, no vis por.

Arbuckle samples unlagged. Multiple circulations.

3240'-44': Dolo, lt gry fn xtn, med res, gd grsy lstr, SSFO & sli bubbles gas on brk. Sply brwn oil stn in prnpt intr xtn por. Pr-fr intr xtn por.

3244'-49': Dolo, tan, vfn xtn, fr intr xtn por, NS. 1 pc Dolo, off wht w/abndt clay matrix btwn rhombs, glaucitic, SSG & trc rainbow oil on break. Pr quality sample.

3249'-54': Dolo, off wht, vfn xtn, med res, sli vuggy, intr xtn dissolution vugs, lt brwn stn in vugs, fr shw rainbow oil on brk, trc gas. Also sli ool dolo, lt gry, rd med ooids, fr lv drk stn in intr ool por, med-hrd res, sli shw rainbow oil on brk, sli odr, scat, wk vry dull yell fluor. Overall pr intr xtn por. Several pcs w/fr-gd intr xtn & fr vugular por, w/gd brwn stn in vugs, found in dry sample. Still scat, uneven vry lt stn, in mst pcs. Some improvemnt in porosity.

3254'-64': Much shale & lms from uphole. Several pcs dolo w/fr-gd even yell fluor. 1 pc brwn med xtn, well sat, sft & semi crmbly on brk, gd intr xtn por. 1 pc brwn ool dolo, fn xtn, med res, VSS rainbow oil & trc gas on brk. Mst pcs off wht-frm fn xtn med-hrd res, sli shw rainbow oil on brk. Pr-fr vis por.

3264'-67': Dolo, tan-brwn, fn xtn, hrd res, sli siliceous, pr vis pr. Vry lt stn & sat NSFO, vry sli odr. 1 pc brwn dolo, fn xtn, sft-med res w/gd stn & sat, fr shw rainbow oil on brk & odr.

3270'-80': Dolo, tan-brwn, vfn-med xtn, many w/abndt rhombic xtl clstrs of various sizes, evidence of lgr vugs in these pcs, med-hrd res, pr-fr intr xtn pr. fr-gd stn & sat in about 30% pcs.

3280'-90': Dolo, tan, vfn-fn xtn, about half of pcs chlky, fn xtn, med res, pr-no vis por & NS. 25-30% pcs w/fr intr xtn por, vuggy & gd stn as abv. Several pcs chrt, off-wht to gry, shrp & frsh. Sample poor quality, vry much vari-colored shale.

3390'-3300': Dolo, lt brwn-gry, vfn xtn, med-hrd res, sli siliceous, some sli-ool, mst tite w/pr-no vis por. Only sprs scat shallow vugs, some w/scat uneven lt brwn-blk stn. Losina show

3300'-10': Dolo, tan, vfn-fn xtn, sft-med res, sli chlky/shaley, vry pr-no vis intr xtn por. Non vuggy, several pcs chrt, wht-lt gry, some abndtly ool. A few pcs tan dolomitic shale to shaley dolomite w/no vis por, chlky w/flash of strg effervescence. Some fn xtn w/sli glauc matrix. NS.

3310'-20': Dolo, brwn, vfn-fn xtn, med res, a few pcs w/many rd oomldc looking vugs, fr-gd brwn uneven stn & sat. several pcs w/fr-gd intr xtn por, & evidence of lgr vugs. Appears to be a "wash" of pcs w/porosity & sat. Abv sample noted no show. **This sample approximately lags back to the drilling break @ 3292'.** Many pcs tite dolo, as abv. Trc blk/pnk mottled sli weathered chrt.

RTD sample 3327' (3323') cir for 60 min: Dolo, gry, brwn-tan, vfn xtn, hrd res, Mst pcs pr-no vis por. Some sli shaley/chlky. 1 pc xtn dolo w/brwn dolomitic looking shale attached. A couple pcs chrt dolo w/chrt attached. A few pcs w/scat uneven stn & sat in scat, sprs intr xtn por. Mst pcs quite tite.

CFS @ 3244' 15 min: Shale, prpl, gry, grn, maroon. Dolo, crm, vfn xtn, sli siliceous, hrd res, pr-no vis por. Trc gas bubbles on brk. 1 pc brl-med res FSFO. Mst pcs vry pr por. Sli odr in sample.

CFS @ 3244' 30 min: Congl/wrtc shale & varicolored chrt, shrp & frsh. Also dolo, crm-lt gry, vfn-med xtn, brl-med res, sli odr in sample. Overall vry pr shw.

CFS @ 3244' 45 min: Dolo, lt gry-tan, fn xtn, med-hrd res, trc FO on brk, sli odr, fr uneven sply stn in approx 50% pcs, pr-fr intr xtn por.

CFS @ 3244' 60 min: Dolo, crm-lt prk, vfn xtn, med-hrd res, pr vis por, wk scat drk edge stn, VSSFO, sli odr. Sprs, sply edge stn in dry samples. Pr vis intr xtn por, mst pcs

CFS @ 3249' 15 min: Dolo, crm-tan fn xtn, hrd res, sli siliceous, pr vis por. 1 pc w/stnk lv brwn stn in intr xtn por, med res, trc lt brwn FO on brk, Trc gas.

CFS @ 3249' 30 min: Dolo, tan-lt gry/grn sli glauc, fn xtn, med res, fr-gd intr xtn por, sli shw rainbow oil on brk. 1 pc brwn ool dolo, vfn xtn, pr-fr vis por, vgd drk brwn stn & sat. Slow building effrvscnc. Sli odr. Fr uneven brwn stn & sat in approx 25% pcs, pr-fr intr xtn por.

3249' CFS 45 min: 1 pc dolo lt gry, w/med xtn rhombs, scat drk brk stn in intr xtn por, SSFO from intr xtn por on brk. sli odr. 1 pc sli glauc off wht-lt grn, med xtn, brl-med res, bleeding gas & SSFO on brk. fr uneven brwn stn in intr xtn por, several pcs. Many pcs dolo, fn xtn, seem unsat w/no vis stn in wet samples.

CFS @ 3249' 60 min: Dolo, lt gry-frm, fn xtn, med res, some semi-sucrosic, rare sply lv stn in prnpt por. Pr-fr intr xtn por, trc rainbow oil & gas in a few pcs, Lt brwn uneven stn in about 70% dolo pcs.

CFS @ 3254' 30 min: Dolo, off wht-frm, mst fn-med xtn, brl-med res, trc rainbow- brwn drpits FO in some pcs. Mst pcs wk, lt scat stn & pr vis intr xtn por. Trc chrt dolo.

CFS @ 3254' 45 min: Dolo, lt brwn-frm, fn-med xtn, fr-gd intr xtn por. Several pcs w/irregular sized rhombs. Sample shws increase in string & poro. Trc pcs brwn sli ool dolo, non vuggy, fn-med xtn, brl/crmbly, 1 pc w/sli shw rainbow oil & gas on brk. Trc dolo chrt/chrt dolo. Drk gry chrt w/off wht vfn xtn dolo attached.

CFS @ 3254' 60 min: Dolo, brwn-lt gry, fn-med rhombic xtn, fr even brwn stn, fr-gd intr xtn por. 1 pc brwn dolo, fn xtn, brl, bleeding gsy rainbow oil on brk. 1 pc brwn sli ool dolo, non vuggy, med-hrd res w/VSSO.

CFS @ 3264' 15 min: Dolo, fn xtn, crm-brwn, med-hrd res, prns mst pcs. 1 pc ool dolo, non vuggy, wk shw as abv. 1 pc brwn dolo, fn xtn, med res, well sat, gd stn, fr shw rainbow oil on brk. Vry sli odr in sample. Vry much shale in sample.

CFS @ 3264' 30 min: Dolo, off wht-brwn fn xtn, mst hrd res, sli siliceous, pr-no shw. 1 pc tan fr xtn, brl/semi-sucrosic pc w/gd even stn & sat, gd shw rainbow oil on brk. Also, wk-no shw. Vry sli odr. Scat wk, dull, yell/grn edge fluor. brwn dolo, fn xtn, med-hrd res, pr-fr sat, sli shw rainbow oil & gas on brk. Mst pcs pr-no vis por & NS

3350

3400

CFS @ 3264' 45 min: 1 pc brwn ool dolo, vfn xtl, w/trc FO, on brk, hrd res, vry pr vis por. A coupl off wht-lt gry fn xtl, brtl/crmbly pcs w/fr-gd intr xtl por & NS. 1 or 2 pcs w/strks drk stn in pnpnt intr xtl por. No odr. Mst pcs NS. 1 pc dolo w/shrp frsh gry chrt attached.

CFS @ 3264' 60 min: Dolo, lt gry- off wht, vfn-fn xtl, brtl/crmbly in a few pcs, mst med- hrd res pr-no vis por. Some pcs w/vry sli trc drpits clr- rainbow oil on brk, vry pr sat, no stn. A couple pcs brwn dolo, no sat, trc- sli shw stn in sprs intr xtl por. NSFO. 1 pc brwn fn xtl, dolo, crmbly, w/gd stn & sat, gd shw rainbow oil on brk, gd intr 1 xtl por, could be from up hole. Chrt off wht, shrp & frsh, some anbdtly ool. No odr in sample. Dry sample shows mst pcs to have vry lt strks of lt brwn uneven stn & fr-gd intr xtl por.

CFS @ 3267' 15 min: Dolo, brwn, vfn xtl, brtl/semi-sucrosic, fr-gd stn & sat, fr shw rainbow drpits oil on brk, SSFO, brwn drpits FO on brk SSG. 1 pc chrty dol/dol chrt, w/fr lt brwn sat & stn, vry hrd res. 1 pc tan dolo fn xtl, pr intr xtl por, fr lt stn & sat, gd shw rainbow oil on brk. Several pcs dol, off wht-tan, vfn xtl, pr-no vis por, & NS.

CFS @ 3267' 30 min: Dolo, lt gry-brwn, fn xtl, med res, a few brtl/sli crmbly, fr sat & lt even stn, sli-fr shw grsy lstr & rainbow on on brk. Better shw than abv! Many pcs tite w/little to no shw. 1 pc vry hrd res w/vry crs irregular vugs. evidence of lrg sized vugs.

CFS @ 3267' 60 min: Dolo, brwn, fn xtl, brtl-med res, fr stn & sat, fr shw rainbow oil & gas on brk, Trc pcs dolo, sli intr xtl vuggy w/drck brwn stn & gd uneven sat. Fluor is more even, dull yell/wht than abv, Fr intr xtl por, mst pcs w/shw. Increase in intr xtl & lrg vugs.