



TRILOBITE TESTING, INC.

DRILL STEM TEST REPORT

Trans Pacific Oil Corp

33-8s-20w-Rooks Co.

100 S Main STE 200
Wichita KS 67202

KSJ Farms 'A' #1-33

Job Ticket: 60510

DST#: 1

ATTN: Bryce Bidleman

Test Start: 2014.09.10 @ 17:08:49

GENERAL INFORMATION:

Formation: **Lower Topeka**

Deviated: No Whipstock: ft (KB)

Time Tool Opened: 20:33:19

Time Test Ended: 02:40:38

Test Type: Conventional Bottom Hole (Initial)

Tester: Tate Lang

Unit No: 77

Interval: 3250.00 ft (KB) To 3310.00 ft (KB) (TVD)

Reference Elevations: 2123.00 ft (KB)

Total Depth: 3310.00 ft (KB) (TVD)

2116.00 ft (CF)

Hole Diameter: 7.88 inches Hole Condition: Good

KB to GR/CF: 7.00 ft

Serial #: 8898 Outside

Press@RunDepth: 118.24 psig @ 3254.00 ft (KB)

Capacity: 8000.00 psig

Start Date: 2014.09.10

End Date: 2014.09.11

Last Calib.: 2014.09.11

Start Time: 17:08:50

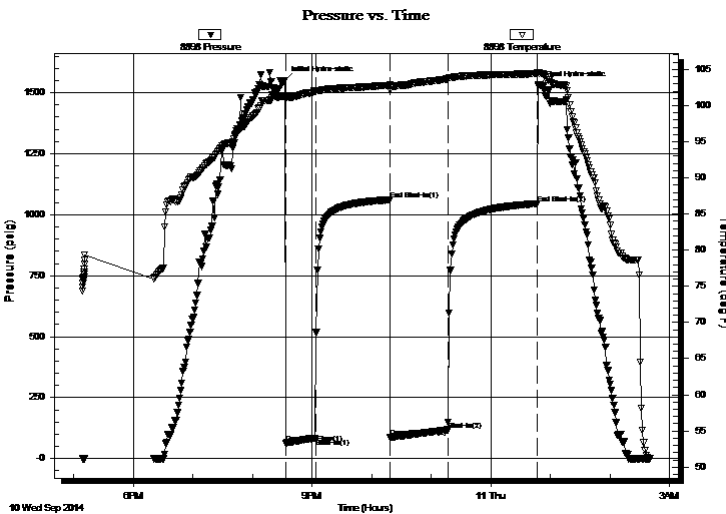
End Time: 02:40:38

Time On Btm: 2014.09.10 @ 20:32:39

Time Off Btm: 2014.09.11 @ 00:47:39

TEST COMMENT: Slid 25 ft. Fair 3 in blow built to a strong 6 1/2 in blow
Dead no blow back
Strong blow built to 6 in
Dead no blow back

PRESSURE SUMMARY



Time (Min.)	Pressure (psig)	Temp (deg F)	Annotation
0	1550.00	101.36	Initial Hydro-static
1	63.64	101.13	Open To Flow (1)
31	84.57	101.94	Shut-In(1)
106	1060.95	102.81	End Shut-In(1)
107	86.00	102.23	Open To Flow (2)
165	118.24	103.70	Shut-In(2)
255	1045.69	104.43	End Shut-In(2)
256	1530.47	104.59	Final Hydro-static

Recovery

Length (ft)	Description	Volume (bbl)
110.00	100%M	1.27
90.00	WCM 40%W 60%M	1.26

Gas Rates

	Choke (inches)	Pressure (psig)	Gas Rate (Mcf/d)



**TRILOBITE
TESTING, INC**

DRILL STEM TEST REPORT

FLUID SUMMARY

Trans Pacific Oil Corp

33-8s-20w-Rooks Co.

100 S Main STE 200
Wichita KS 67202

KSJ Farms 'A' #1-33

Job Ticket: 60510

DST#: 1

ATTN: Bryce Bidleman

Test Start: 2014.09.10 @ 17:08:49

Mud and Cushion Information

Mud Type: Gel Chem

Cushion Type:

Oil API:

deg API

Mud Weight: 9.00 lb/gal

Cushion Length:

ft

Water Salinity:

24000 ppm

Viscosity: 42.00 sec/qt

Cushion Volume:

bbbl

Water Loss: 7.40 in³

Gas Cushion Type:

Resistivity: ohm.m

Gas Cushion Pressure:

psig

Salinity: 1400.00 ppm

Filter Cake: 1.00 inches

Recovery Information

Recovery Table

Length ft	Description	Volume bbbl
110.00	100%M	1.270
90.00	WCM 40%W 60%M	1.262

Total Length: 200.00 ft Total Volume: 2.532 bbl

Num Fluid Samples: 0

Num Gas Bombs: 0

Serial #:

Laboratory Name:

Laboratory Location:

Recovery Comments: .361 @ 55 F = 24000

