



TRILOBITE TESTING, INC.

DRILL STEM TEST REPORT

Trans Pacific Oil Corp

33-8s-20w-Rooks Co.

100 S Main STE 200
Wichita KS 67202

KSJ Farms 'A' #1-33

ATTN: Bryce Bidleman

Job Ticket: 60511

DST#: 2

Test Start: 2014.09.11 @ 14:33:24

GENERAL INFORMATION:

Formation: **Lansing 35' @ 50' Zo**

Deviated: No Whipstock: ft (KB)

Time Tool Opened: 17:09:04

Time Test Ended: 23:54:13

Test Type: Conventional Bottom Hole (Reset)

Tester: Tate Lang

Unit No: 77

Interval: 3383.00 ft (KB) To 3423.00 ft (KB) (TVD)

Reference Elevations: 2123.00 ft (KB)

Total Depth: 3310.00 ft (KB) (TVD)

2116.00 ft (CF)

Hole Diameter: 7.88 inches Hole Condition: Good

KB to GR/CF: 7.00 ft

Serial #: 8898 Outside

Press @ Run Depth: 259.97 psig @ 3388.00 ft (KB)

Capacity: 8000.00 psig

Start Date: 2014.09.11

End Date:

2014.09.11

Last Calib.:

2014.09.12

Start Time: 14:33:25

End Time:

23:54:13

Time On Btm:

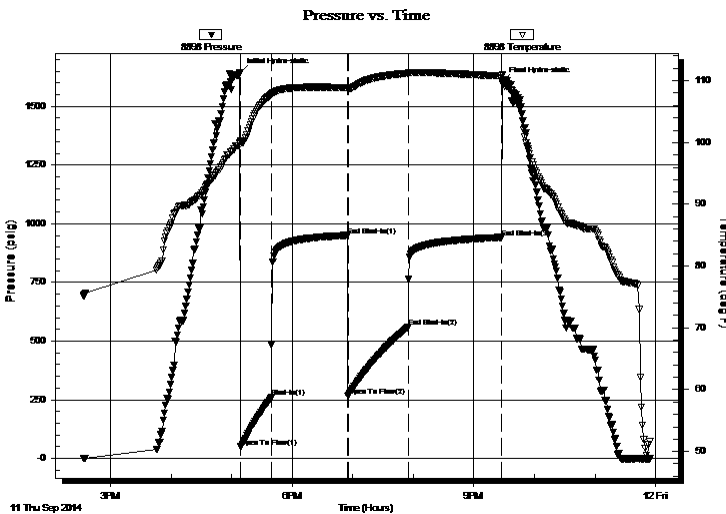
2014.09.11 @ 17:08:44

Time Off Btm:

2014.09.11 @ 21:28:14

TEST COMMENT: B.O.B. in 5 mins.
Dead no blow back
B.O.B. in 7 mins
Dead no blow back

PRESSURE SUMMARY



| Time (Min.) | Pressure (psig) | Temp (deg F) | Annotation |
|-------------|-----------------|--------------|----------------------|
| 0 | 1644.48 | 100.26 | Initial Hydro-static |
| 1 | 49.65 | 99.76 | Open To Flow (1) |
| 31 | 259.97 | 107.80 | Shut-In(1) |
| 107 | 950.45 | 108.91 | End Shut-In(1) |
| 107 | 266.56 | 108.72 | Open To Flow (2) |
| 167 | 561.00 | 111.21 | End Shut-In(2) |
| 259 | 941.69 | 110.76 | End Shut-In(3) |
| 260 | 1606.06 | 110.90 | Final Hydro-static |

Recovery

| Length (ft) | Description | Volume (bbl) |
|-------------|----------------|--------------|
| 1020.00 | SMCW 10%M 90%W | 14.03 |
| 30.00 | WCM 45%W 55%M | 0.42 |
| | | |
| | | |
| | | |

* Recovery from multiple tests

Gas Rates

| Choke (inches) | Pressure (psig) | Gas Rate (Mcf/d) |
|----------------|-----------------|------------------|
| | | |



**TRILOBITE
TESTING, INC.**

DRILL STEM TEST REPORT

FLUID SUMMARY

Trans Pacific Oil Corp

33-8s-20w-Rooks Co.

100 S Main STE 200
Wichita KS 67202

KSJ Farms 'A' #1-33

Job Ticket: 60511

DST#: 2

ATTN: Bryce Bidleman

Test Start: 2014.09.11 @ 14:33:24

Mud and Cushion Information

Mud Type: Gel Chem

Cushion Type:

Oil API:

deg API

Mud Weight: 9.00 lb/gal

Cushion Length:

ft

Water Salinity:

31000 ppm

Viscosity: 46.00 sec/qt

Cushion Volume:

bbbl

Water Loss: 6.00 in³

Gas Cushion Type:

Resistivity: ohm.m

Gas Cushion Pressure:

psig

Salinity: 1500.00 ppm

Filter Cake: 1.00 inches

Recovery Information

Recovery Table

| Length ft | Description | Volume bbbl |
|--------------|----------------|----------------|
| 1020.00 | SMCW 10%M 90%W | 14.035 |
| 30.00 | WCM 45%W 55%M | 0.421 |

Total Length: 1050.00 ft Total Volume: 14.456 bbl

Num Fluid Samples: 0

Num Gas Bombs: 0

Serial #:

Laboratory Name:

Laboratory Location:

Recovery Comments: .322 @ 50 F = 31000

Pressure vs. Time

