



TRILOBITE TESTING, INC.

DRILL STEM TEST REPORT

Trans Pacific Oil Corp

33-8s-20w-Rooks Co.

100 S Main STE 200
Wichita KS 67202

KSJ Farms 'A' #1-33

Job Ticket: 60513

DST#: 4

ATTN: Bryce Bidleman

Test Start: 2014.09.13 @ 08:55:05

GENERAL INFORMATION:

Formation: **Lansing 160 & 180 zo**

Deviated: No Whipstock: ft (KB)

Time Tool Opened: 11:10:15

Time Test Ended: 16:20:44

Test Type: Conventional Bottom Hole (Reset)

Tester: Tate Lang

Unit No: 77

Interval: 3510.00 ft (KB) To 3550.00 ft (KB) (TVD)

Reference Elevations: 2123.00 ft (KB)

Total Depth: 3550.00 ft (KB) (TVD)

2116.00 ft (CF)

Hole Diameter: 7.88 inches Hole Condition: Good

KB to GR/CF: 7.00 ft

Serial #: 8898 Outside

Press@RunDepth: 18.04 psig @ 3514.00 ft (KB)

Capacity: 8000.00 psig

Start Date: 2014.09.13

End Date:

2014.09.13

Last Calib.:

2014.09.13

Start Time: 08:55:06

End Time:

16:20:45

Time On Btm:

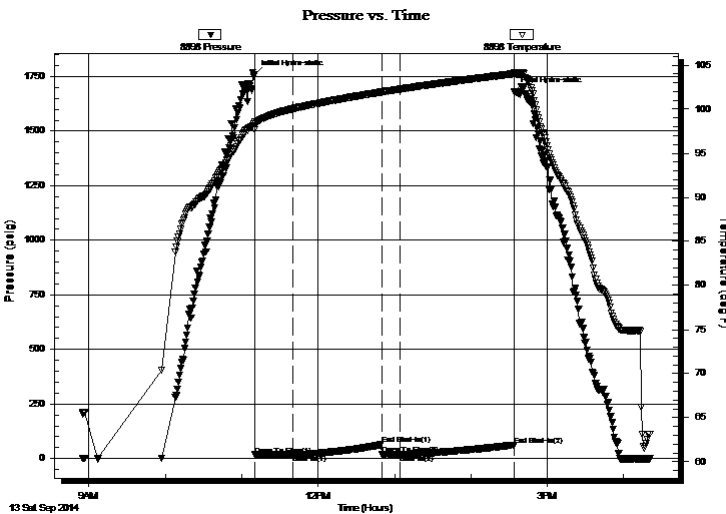
2014.09.13 @ 11:10:05

Time Off Btm:

2014.09.13 @ 14:34:14

TEST COMMENT: 30-Weak surface blow built to 1/2 in
75-Dead no blow back
14-Dead no blow
90-Dead no blow back

PRESSURE SUMMARY



Time (Min.)	Pressure (psig)	Temp (deg F)	Annotation
0	1758.19	98.52	Initial Hydro-static
1	16.87	97.67	Open To Flow (1)
30	17.91	100.04	Shut-In(1)
100	64.41	101.95	End Shut-In(1)
100	17.84	101.92	Open To Flow (2)
115	18.04	102.27	Shut-In(2)
204	62.45	104.01	End Shut-In(2)
205	1681.97	104.17	Final Hydro-static

Recovery

Length (ft)	Description	Volume (bbl)
3.00	100%M	0.01

Gas Rates

	Choke (inches)	Pressure (psig)	Gas Rate (Mcf/d)

* Recovery from multiple tests



**TRILOBITE
TESTING, INC**

DRILL STEM TEST REPORT

FLUID SUMMARY

Trans Pacific Oil Corp

33-8s-20w-Rooks Co.

100 S Main STE 200
Wichita KS 67202

KSJ Farms 'A' #1-33

Job Ticket: 60513

DST#: 4

ATTN: Bryce Bidleman

Test Start: 2014.09.13 @ 08:55:05

Mud and Cushion Information

Mud Type: Gel Chem

Cushion Type:

Oil API:

deg API

Mud Weight: 9.00 lb/gal

Cushion Length:

ft

Water Salinity:

ppm

Viscosity: 47.00 sec/qt

Cushion Volume:

bbbl

Water Loss: 7.40 in³

Gas Cushion Type:

Resistivity: ohm.m

Gas Cushion Pressure:

psig

Salinity: 2000.00 ppm

Filter Cake: 1.00 inches

Recovery Information

Recovery Table

Length ft	Description	Volume bbbl
3.00	100%M	0.015

Total Length: 3.00 ft Total Volume: 0.015 bbl

Num Fluid Samples: 0

Num Gas Bombs: 0

Serial #:

Laboratory Name:

Laboratory Location:

Recovery Comments:

Pressure vs. Time

