



**TRILOBITE
TESTING, INC.**

DRILL STEM TEST REPORT

Trans Pacific Oil Corp

33-8s-20w-Rooks Co.

100 S Main STE 200
Wichita KS 67202

KSJ Farms 'A' #1-33

Job Ticket: 60514

DST#: 6

ATTN: Bryce Bidleman

Test Start: 2014.09.15 @ 06:02:43

GENERAL INFORMATION:

Formation: **Arbuckle**

Deviated: No Whipstock: ft (KB)

Time Tool Opened: 08:31:03

Time Test Ended: 15:43:02

Test Type: Conventional Bottom Hole (Reset)

Tester: Tate Lang

Unit No: 77

Interval: 3632.00 ft (KB) To 3683.00 ft (KB) (TVD)

Reference Elevations: 2123.00 ft (KB)

Total Depth: 3683.00 ft (KB) (TVD)

2116.00 ft (CF)

Hole Diameter: 7.88 inches Hole Condition: Good

KB to GR/CF: 7.00 ft

Serial #: 8898 Outside

Press@RunDepth: 92.76 psig @ 3646.00 ft (KB)

Capacity: 8000.00 psig

Start Date: 2014.09.15

End Date:

2014.09.15

Last Calib.:

2014.09.15

Start Time:

06:02:44

End Time:

15:43:02

Time On Btm:

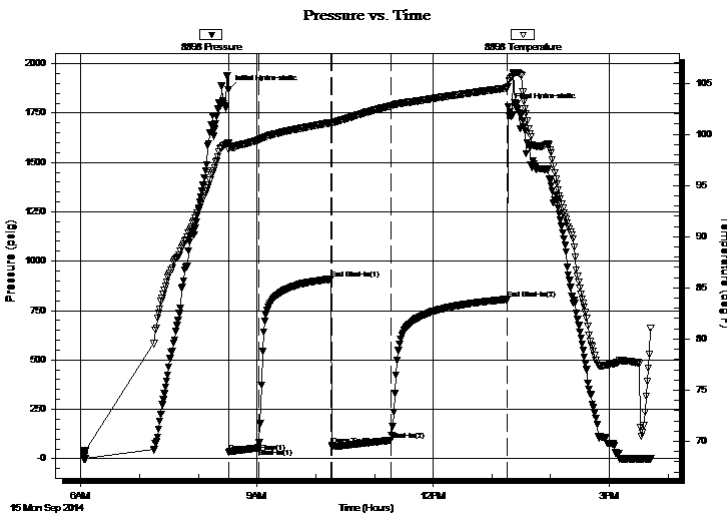
2014.09.15 @ 08:30:43

Time Off Btm:

2014.09.15 @ 13:16:22

TEST COMMENT: 30-Strong blow built to 7 in
75-Dead no blow back
60-Strong blow built to 10 1/2 in
120-Dead no blow back

PRESSURE SUMMARY



Time (Min.)	Pressure (psig)	Temp (deg F)	Annotation
0	1869.01	99.15	Initial Hydro-static
1	32.54	98.51	Open To Flow (1)
31	54.56	99.45	Shut-In(1)
106	909.97	101.16	End Shut-In(1)
106	65.62	100.95	Open To Flow (2)
166	92.76	102.77	Shut-In(2)
285	807.17	104.51	End Shut-In(2)
286	1779.64	104.67	Final Hydro-static

Recovery

Length (ft)	Description	Volume (bbl)
120.00	MCO 45%M 55%O	1.41
80.00	GO 5%G 95%O	1.12
0.00	100 GIP	0.00

* Recovery from multiple tests

Gas Rates

	Choke (inches)	Pressure (psig)	Gas Rate (Mcf/d)



**TRILOBITE
TESTING, INC**

DRILL STEM TEST REPORT

FLUID SUMMARY

Trans Pacific Oil Corp

33-8s-20w-Rooks Co.

100 S Main STE 200
Wichita KS 67202

KSJ Farms 'A' #1-33

Job Ticket: 60514

DST#: 6

ATTN: Bryce Bidleman

Test Start: 2014.09.15 @ 06:02:43

Mud and Cushion Information

Mud Type: Gel Chem

Cushion Type:

Oil API:

25 deg API

Mud Weight: 10.00 lb/gal

Cushion Length:

ft

Water Salinity:

ppm

Viscosity: 58.00 sec/qt

Cushion Volume:

bbbl

Water Loss: 8.99 in³

Gas Cushion Type:

Resistivity: ohm.m

Gas Cushion Pressure:

psig

Salinity: 2800.00 ppm

Filter Cake: 1.00 inches

Recovery Information

Recovery Table

Length ft	Description	Volume bbl
120.00	MCO 45%M 55%O	1.410
80.00	GO 5%G 95%O	1.122
0.00	100 GIP	0.000

Total Length: 200.00 ft Total Volume: 2.532 bbl

Num Fluid Samples: 0

Num Gas Bombs: 0

Serial #:

Laboratory Name:

Laboratory Location:

Recovery Comments:

