

# DMT Company

Onsite Hydrocarbon Detection

## Scale 1:240 (5"=100') Imperial Measured Depth Log

Well Name: JOHNSON #1  
Location: SW NE NW SE SECTION 14 18S 3W  
License Number: 33491, API# 15-113-21360  
Spud Date: 9/4/2013  
Surface Coordinates: 2123' FROM SOUTH LINE OF SECTION  
1840' FROM EAST LINE OF SECTION  
Bottom Hole Coordinates: 2123' FROM SOUTH LINE OF SECTION  
1840' FROM EAST LINE OF SECTION  
Ground Elevation (ft): 1502' K.B. Elevation (ft): 1509'  
Logged Interval (ft): 3000' To: 3825' Total Depth (ft): 3825'  
Formation: SIMPSON  
Type of Drilling Fluid: CHEMICAL, MUD-CO

Region: MCPHERSON CO. KS.  
Drilling Completed: 9/16/2013

Printed by WellSight Log Viewer from WellSight Systems 1-800-447-1534 www.WellSight.com

### OPERATOR

Company: KING OIL OPERATION  
Address: 1746 150TH AVE  
ELLIS, KANSAS 67637  
(785) 259-3038

### GEOLOGIST

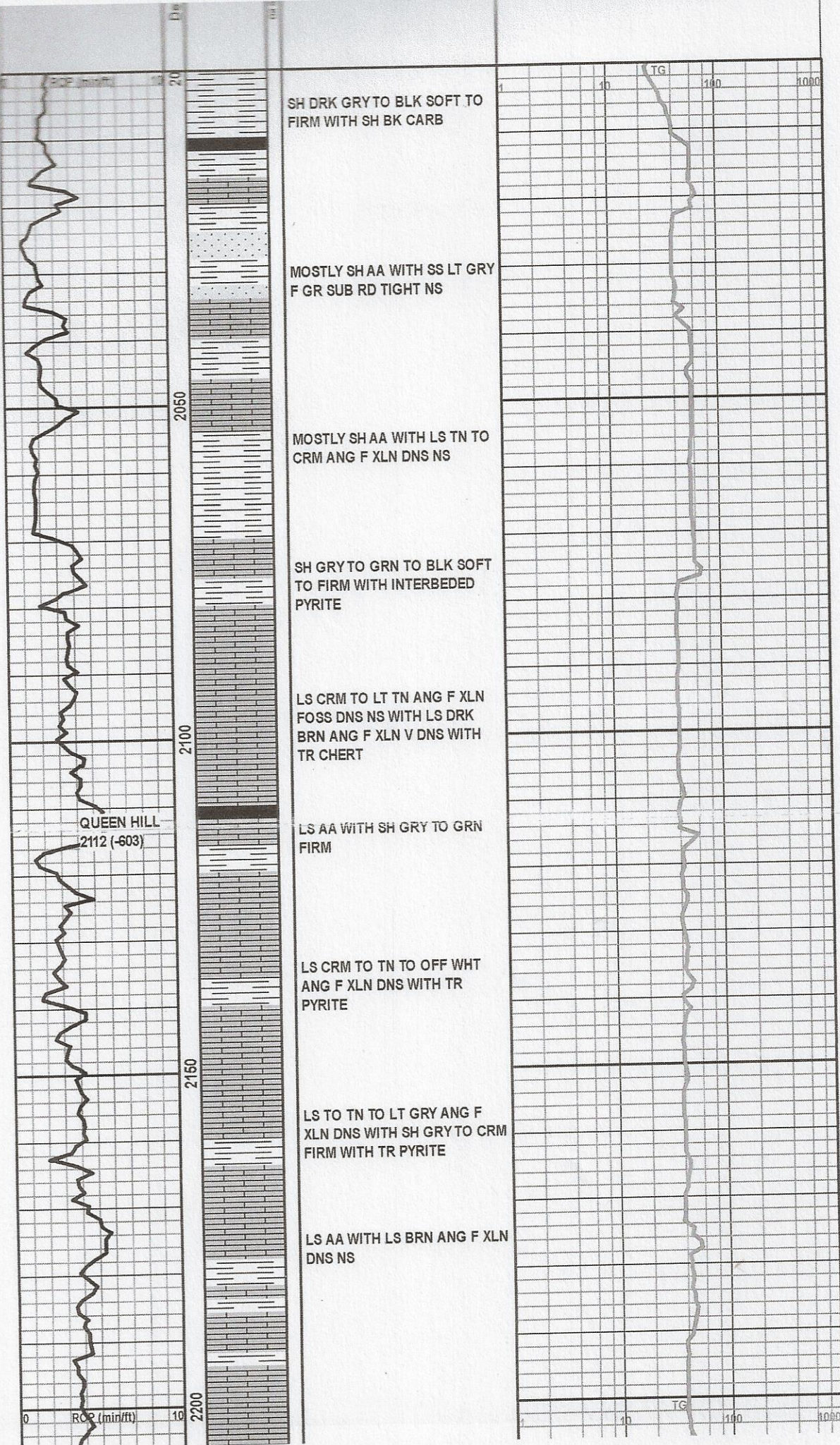
Name: DAVID GOULD (LOGGER)  
Company: DMT COMPANY  
Address: 532 SUNRISE  
PRATT, KANSAS 67124  
(620) 388-2847

### Comments

CONTRACTOR:  
SKYTOP Rig #1

DAILY STATUS: (7:00 AM)  
9/10/13 1929', DRILL AHEAD  
9/11/13 2269', DRILL AHEAD  
9/12/13 2744', DRILL AHEAD  
9/13/13 2985', DRILL AHEAD  
9/14/13 3425', DRILL AHEAD  
9/15/13 3740', DRILL AHEAD

### ROCK TYPES



SH DRK GRY TO BLK SOFT TO FIRM WITH SH BK CARB

MOSTLY SH AA WITH SS LT GRY F GR SUB RD TIGHT NS

MOSTLY SH AA WITH LS TN TO CRM ANG F XLN DNS NS

SH GRY TO GRN TO BLK SOFT TO FIRM WITH INTERBEDDED PYRITE

LS CRM TO LT TN ANG F XLN FOSS DNS NS WITH LS DRK BRN ANG F XLN V DNS WITH TR CHERT

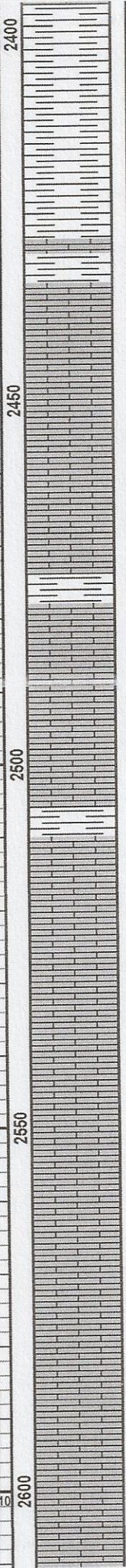
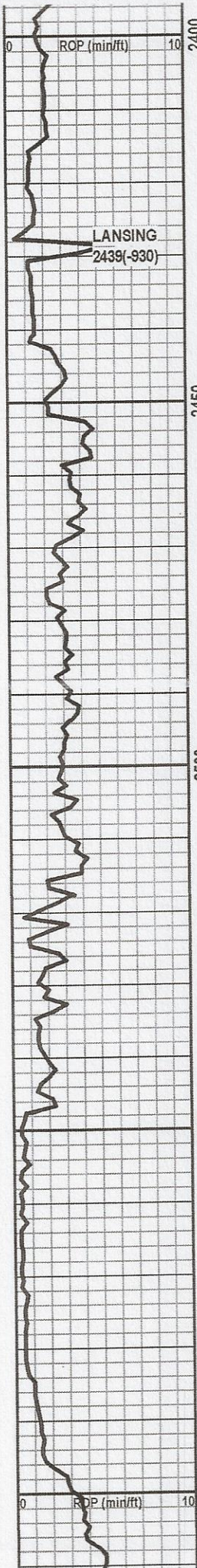
QUEEN HILL  
2112 (-603)

LS AA WITH SH GRY TO GRN FIRM

LS CRM TO TN TO OFF WHT ANG F XLN DNS WITH TR PYRITE

LS TO TN TO LT GRY ANG F XLN DNS WITH SH GRY TO CRM FIRM WITH TR PYRITE

LS AA WITH LS BRN ANG F XLN DNS NS



SH AA WITH LS BRN ANG F XLN  
DNS FOSS

AA WITH LOTS OF PYRITE

LS BRN TO DRK BRN ANG VF  
XLN V DNS NS WITH SH GRY

LS BRN TO TN TO LT GRY ANG  
F XLN SOME INTERBEDDED  
SHELL DNS  
LS LT GRY TO TN ANG F XLN  
DNS P POR NS

LS TN ANG F XLN F P POR NS  
WITH LS LT GRY TO TN ANG F  
XLN DNS SOME SLIGHTLY  
CHALKY NS  
LS AA WITH TR PYRITE WITH  
SH DRK GRY TO BLK FIRM

LS LT GRY TO TN ANG F XLN  
DNS WITH LS DRK BRN ANG F  
XLN V DNS

LS BRN ANG F XLN DNS  
VUGGY

LS GRY TO BRN ANG F XLN  
DNS WITH SH GRY FIRM

LS TN ANG F XLN V VUGGY  
FOSS DNS NS

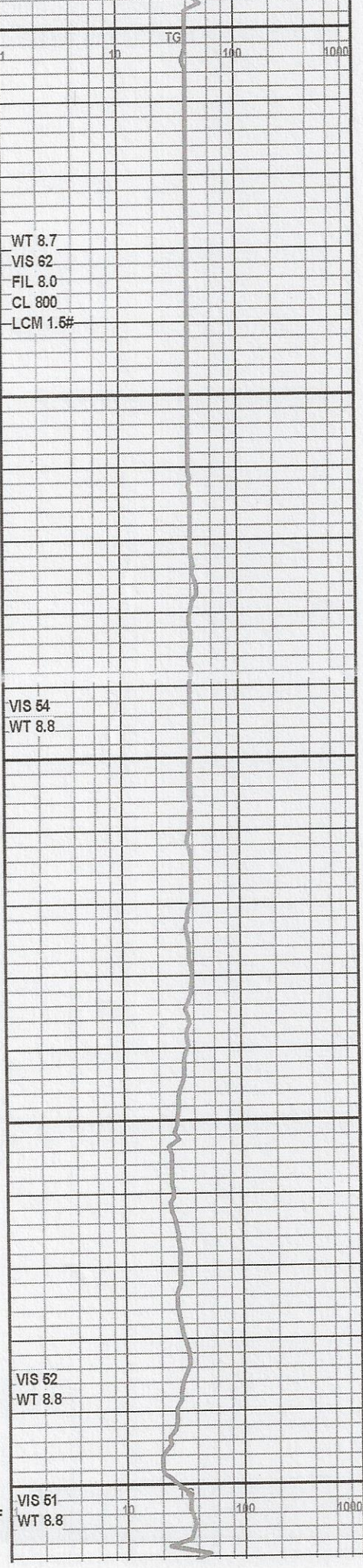
LS AA WITH LS OFF WHT TO LT  
TN VF XLN CHALKY NS

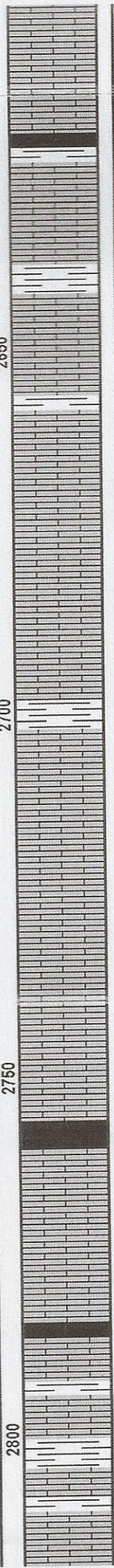
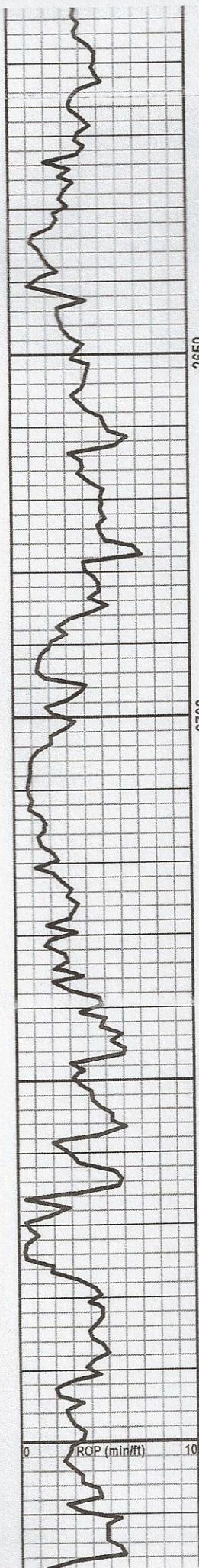
LS TN ANG F XLN OOLICASTIC  
FOSS DNS NS

LS TN ANG VG OOLIC POR  
WITH SOME OOLICASTIC POR  
FOSS, F XLN DNS NS

LS TN TO LT GRY ANG F XLN  
DNS NS

LS TO DRK BRN TO GRY ANG F  
XLN DNS TO V DNS





LS TO DRK BRN TO GRY ANG F XLN DNS TO V DNS

LS AA WITH SH GRY FIRM

LS DRK GRY ANG F XLN DNS WITH SH DRK GRY TO BLK FIRM TO HD

LS DRK BRN TO TN ANG F XLN DNS TO V DNS NS

LS TO CRM TO OFF WHT ANG F XLN DNS SOME VUGGY

LS AA SOME SLIGHT CHALKY WITH SH GRY FIRM

LS DRK BRN TO DRK GRY ANG F XLN DNS TO V DNS FOSS WITH SH GRY TO GRN FIRM

LS TN TO LT GRY ANG F XLN DNS SLIGHT CHALKY NS WITH SH GRY TO BLK FIRM

LS AA WITH LS DRK BRN TO BRN ANG F XLN DNS TO V DNS WITH TR PYRITE

LS AA WITH LS GRY TO LT GRY ANG F XLN F POR DNS NS

LS AA WITH LS TO CRM TO OFF WHT ANG TO SUB ANG CHALKY F TO VF XLN NS WITH LS BRN ANG F XLN DNS WITH SH GRY FIRM

LS TO TN TO LT GRY ANG F XLN DNS NS

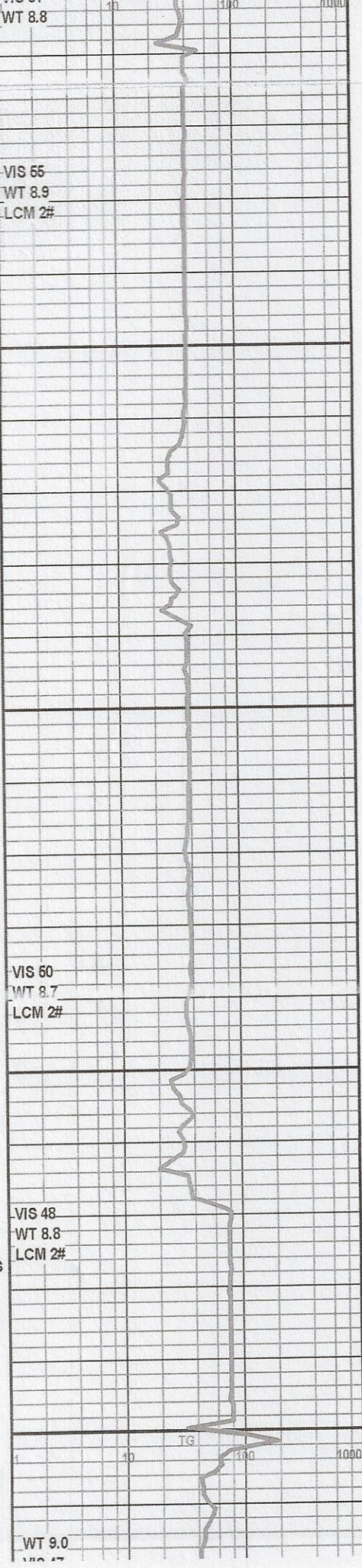
LS AA WITH TR CHERT

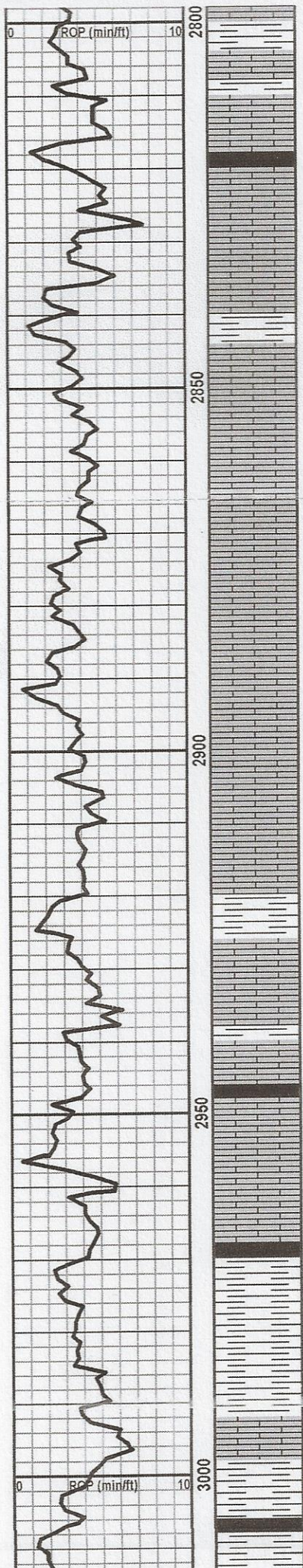
LS AA WITH LS BRN ANG F XLN SLIGHTLY VUGGY NS

LS TN ANG F XLN G TO VG OOLIC PORS SLIGHTLY DNS NS

LS TN TO BRN TO LT GRY ANG F XLN DNS WITH SH GRY FIRM

LS TN TO GRY ANG F XLN DNS WITH SH GRY TO GRN FIRM





LS TN TO GRY ANG F XLN DNS  
WITH SH GRY TO GRN FIRM

LS DRK GRY TO BRN ANG F  
XLN DNS TO V DNS TO VUGGY  
WITH SH GRY TO BLK FIRM

LS BRN TO Tn TO LT GRY ANG  
F XLN DNS TO V DNS NS

LS TN TO CRM F XLN DNS WITH  
SOME BEING CHALKY

LS LT GRY TO BRN ANG F XLN  
DNS

LS DRK GRY ANG V DNS NS  
WITH SH GRY GRN FIRM

LS TN ANG F XLN F OOLIC POR  
NS WITH LS BRN ANG F XLN  
HD

LS AA WITH LS LT GRY ANG F  
XLN DNS NS

LS AA WITH SH GRY TO GRN  
TO BLK FIRM

LS TO SH AA WITH TR PYRITE

LS TO TN TO LT BRN ANG F TO  
M XLN DNS TO V DNS

LS AA WITH LS BRN ANG F XLN  
V DNS NS

LS AA WITH SH GRY TO GRN  
FIRM

LS LT BRN TO LT GRY ANG F  
XLN V DNS TO DNS NS WITH TR  
SH GRY TO DRK GRY SLIGHTLY  
SILTY WITH TR PYRITE

AA WITH SH GRN SLIGHTLY  
SILTY SOFT NS WITH SH DRK  
GRY TO BLK FIRM

LS TO DRK BRN ANG F XLN V  
DNS WITH LS TN ANG F XLN  
DNS WITH SL GRY TO GRN  
FIRM

SH GRY TO LT GRY FIRM SOME  
SLIGHTLY SILTY TO SOFT WITH  
SH BK CARB

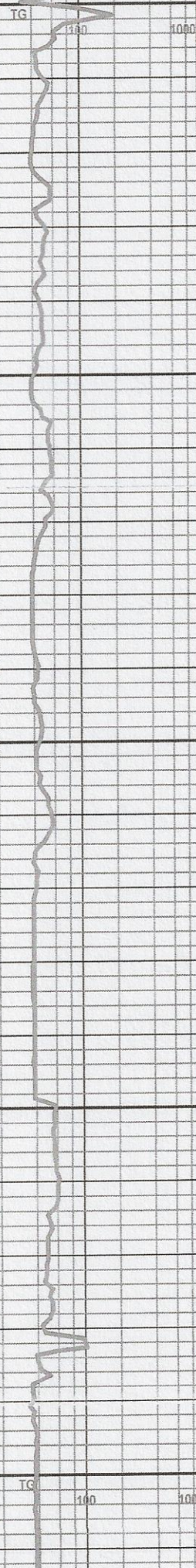
WT 9.0  
VIS 47  
FIL 8.8  
C 1,000  
LCM 2#

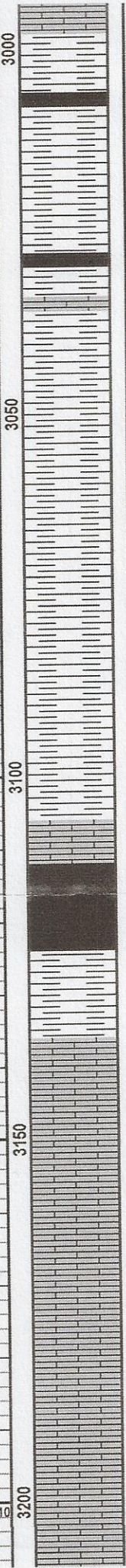
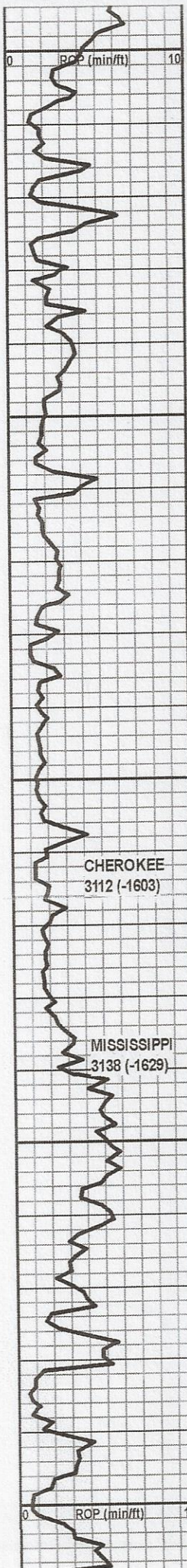
VIS 44  
WT 9.1

VIS 60  
WT 9.1  
LCM 2#

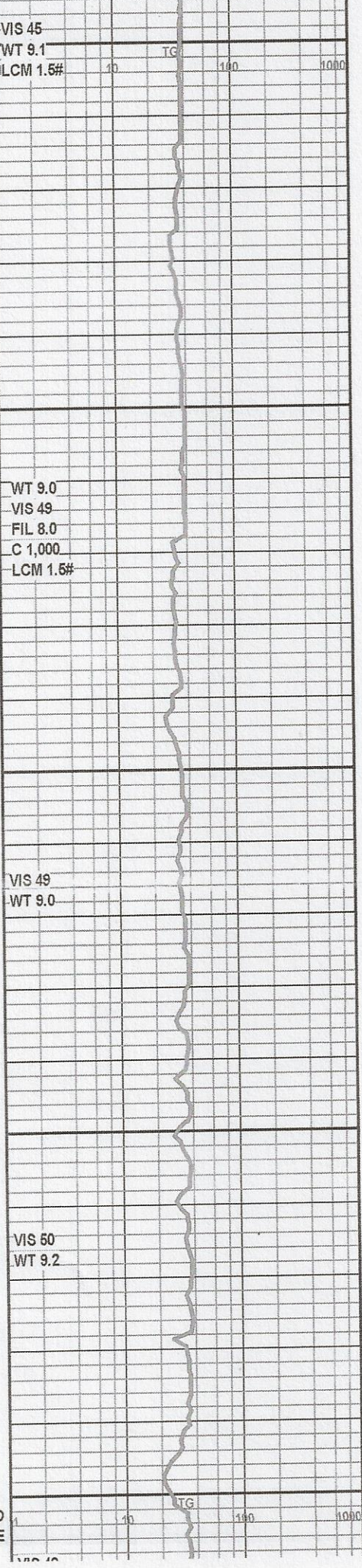
VIS 51  
WT 9.1  
LCM 2#

VIS 45  
WT 9.1  
LCM 1.5#





DNS WITH SL GRY TO GRN FIRM  
 SH GRY TO LT GRY FIRM SOME SLIGHTLY SILTY TO SOFT WITH SH BK CARB  
 SH GRY TO DRK GRY TO BLK FIRM  
 SH GRY TO GRN TO YELLOW FIRM SOFT WITH SH BK CARB  
 SH GRY TO DRK GRY TO GRN TO YELLOW FIRM  
 SH LT GRY TO GRY TO DRK GRY TO GRN TO DRK GRN ANG FIRM  
 SH AA WITH SOME SH BRN TO YELLOW FIRM  
 SH GRY TO DRK GRY TO BLK FIRM  
 SH AA WITH LOT OF YELLOW SH FIRM  
 LS LT TN ANG F XLN SLIGHTLY GLOC F-P POR NS  
 SH BLK CARB  
 LS TN TO LT GRN ANG F XLN DNS WITH CHERT WHT SLIGHTLY WEATHERED NS WITH SOME SHARP NS  
 LS LT GRY TO TN ANG F XLN F POR NS WITH CHERT AA  
 LS TN TO LT GRY ANG F XLN F POR SLIGHTLY STAIN N FLOR, N CUT, N ODOR  
 LS TN TO OFF WHT ANG F XLN F POR NS  
 LS AA WITH SOME STAIN N ODOR, N FLOR, N CUT  
 LS WHT TO OFF WHT ANG F TO VF XLN F-P POR NS WITH SOME SLIGHTLY CHALKY WITH



CHEROKEE  
3112 (-1603)

MISSISSIPPI  
3138 (-1629)

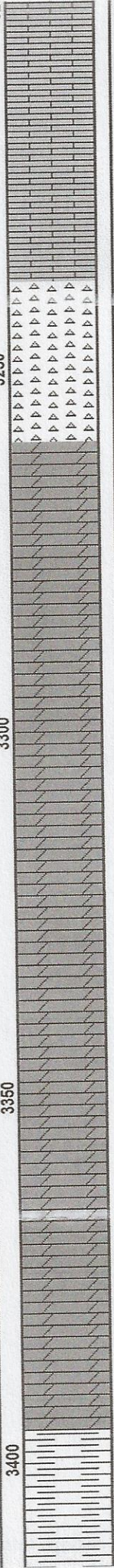
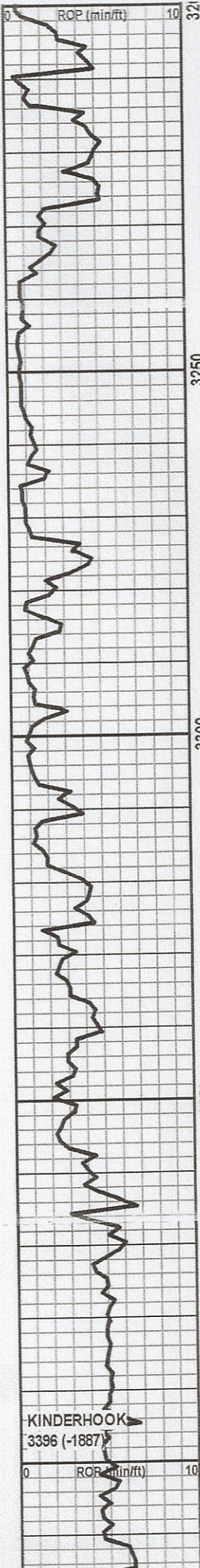
VIS 45  
 WT 9.1  
 LCM 1.5#

WT 9.0  
 VIS 49  
 FIL 8.0  
 C 1,000  
 LCM 1.5#

VIS 49  
 WT 9.0

VIS 50  
 WT 9.2

TGC  
 10 100 1000



LS WHT TO OFF WHT ANG F TO VF XLN F-P POR NS WITH SOME SLIGHTLY CHALKY WITH CHERT WHT TO LT GRY SHARP

LS TN ANG F XLN DNS F POR NS WITH CHERT WHT TO LT GRY SHARP

MOSTLY CHERT WHT TO OFF WHT SUB RD WEATHERED NS

CHERT AA WITH CHERT GRY SHARP V HD

DOL TN ANG F XLN DNS SOME G-F POR NS

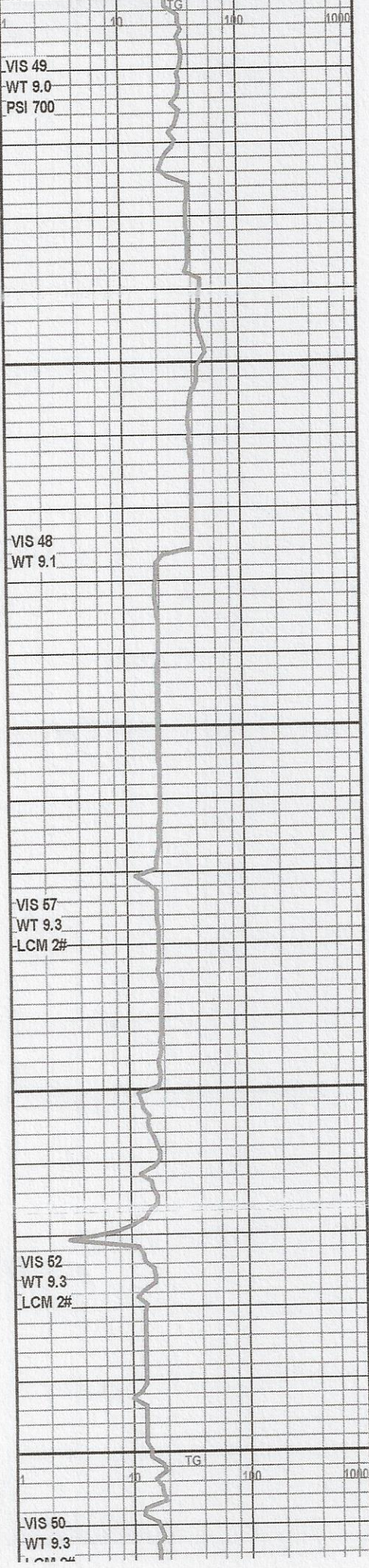
DOL OFF WHT TO TN ANG F XLN DNS SOME F POR NS

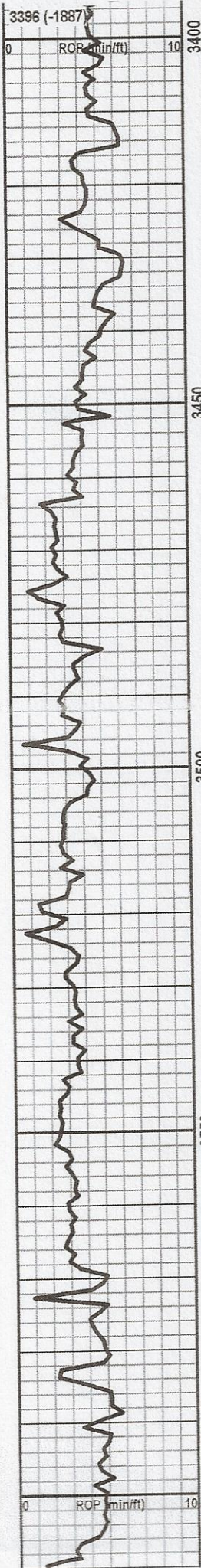
DOL AA WITH CHERT WHT SHARP V DNS

MOSTLY DOL TN ANG F XLN DNS SOME F TO G POR NS WITH CHERT WHT TO LT GRY SHARP

SH GRY TO DRK GRY TO BLK TO GRN FIRM

SH AA WITH TR PYRITE





SH GRY TO DRK GRY TO BLK TO GRN FIRM

SH AA WITH TR PYRITE

SH AA WITH SH BRN TO YELLOW FIRM

SH GRY TO DRK GRY TO BLK TO GRN YELLOW BRN FIRM

SH AA WITH SOME BRN SH FIRM

SH AA WITH TR PYRITE

SH AA WITH MOSTLY SH GRY FIRM

SH AA WITH SH YELLOW FIRM

SH GRY TO DRK GRY TO BLK TO DRK GRN TO BRN TO YELLOW FIRM

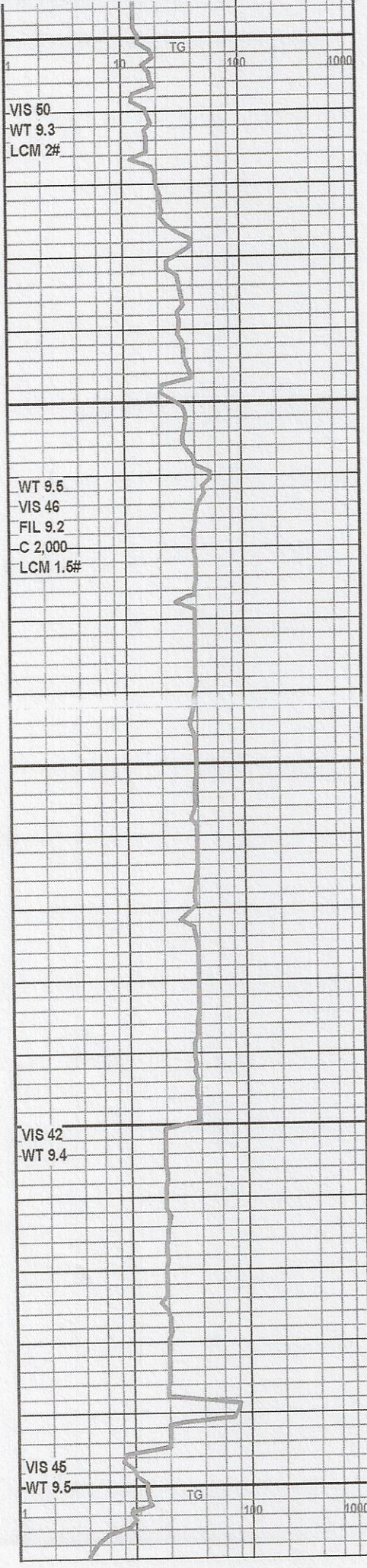
SH AA WITH TR PYRITE

MOSTLY SH AA WITH SOME INTERBEDED PYRITE

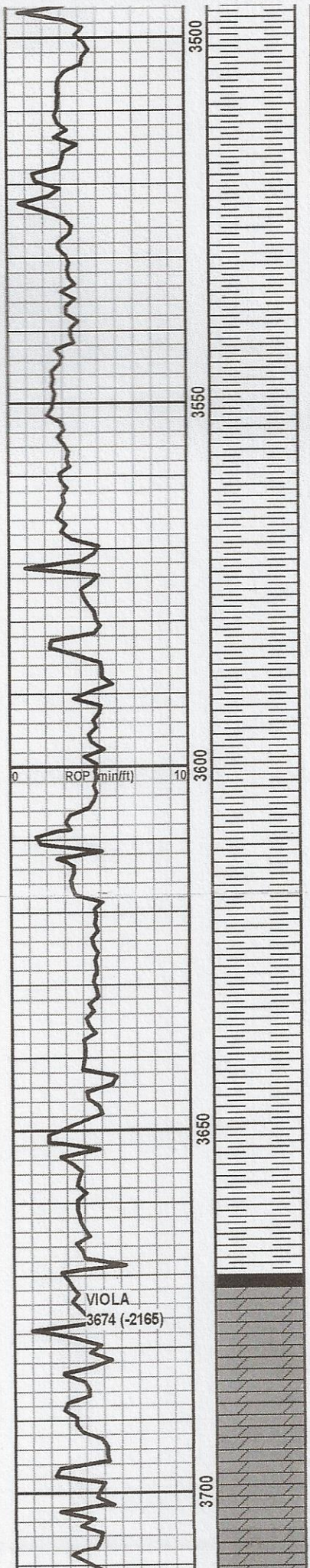
SH AA WITH SH LT BRN FIRM TO HD

SH AA WITH TR PYRITE

SH AA WITH SH BLK CARB







SH AA WITH SH YELLOW FIRM

SH GRY TO DRK GRY TO BLK TO DRK GRN TO BRN TO YELLOW FIRM

SH AA WITH TR PYRITE

MOSTLY SH AA WITH SOME INTERBEDDED PYRITE

SH AA WITH SH LT BRN FIRM TO HD

SH AA WITH TR PYRITE

SH AA WITH SH BLK CARB

SH AA WITH SH BLK FIRM

SH AA WITH TR PYRITE WITH CHERT OFF WHT TO TN SHARP

AA WITH DOL BRN ANG F XLN V DNS NS

DOL LT GRY TO TN ANG F TO M XLN P POR F-G STAIN N FLOR SLIGHT CUT

DOL OFF WHT TO LT GRY ANG M XLN P POR DNS NS

VIS 42  
WT 9.4

VIS 45  
WT 9.5

VIS 50  
WT 9.6  
LCM 1.5#

VIS 54  
WT 9.6  
LCM 1.5#

TG

100

1000

