



DRILL STEM TEST REPORT

Prepared For: **Murfin Drilling. Co. Inc.**

250 N. Water, Ste. 300
Wichita KS .67202

ATTN: Chuck Schmaltz

Claypool #1-14

14-23s-12w Stafford,KS

Start Date: 2014.09.01 @ 09:07:42

End Date: 2014.09.01 @ 16:32:12

Job Ticket #: 54249 DST #: 1

Trilobite Testing, Inc
1515 Commerce Parkway Hays, KS 67601
ph: 785-625-4778 fax: 785-625-5620

Printed: 2014.09.05 @ 10:42:16



**TRILOBITE
TESTING, INC.**

DRILL STEM TEST REPORT

Murfin Drilling, Co. Inc.

14-23s-12w Stafford,KS

250 N.Water, Ste.300
Wichita KS .67202

Claypool #1-14

Job Ticket: 54249

DST#: 1

ATTN: Chuck Schmaltz

Test Start: 2014.09.01 @ 09:07:42

GENERAL INFORMATION:

Formation: **LKC B-F**

Deviated: No Whipstock: ft (KB)

Time Tool Opened: 10:47:57

Time Test Ended: 16:32:12

Test Type: Conventional Bottom Hole (Initial)

Tester: Gary Pevoteaux

Unit No: 56

Interval: 3367.00 ft (KB) To 3445.00 ft (KB) (TVD)

Reference Elevations: 1845.00 ft (KB)

Total Depth: 3445.00 ft (KB) (TVD)

1834.00 ft (CF)

Hole Diameter: 7.88 inches Hole Condition: Fair

KB to GR/CF: 11.00 ft

Serial #: 8352 Outside

Press@RunDepth: 105.59 psig @ 3368.00 ft (KB)

Capacity: 8000.00 psig

Start Date: 2014.09.01

End Date: 2014.09.01

Last Calib.: 2014.09.01

Start Time: 09:07:47

End Time: 16:32:11

Time On Btm: 2014.09.01 @ 10:46:42

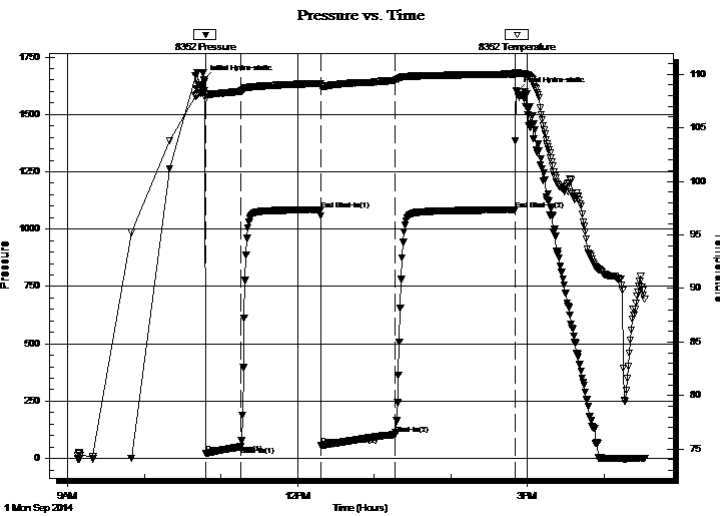
Time Off Btm: 2014.09.01 @ 14:51:42

TEST COMMENT: IF:Weak blow . 1/2 - 2 1/2".

IS:No blow .

FF:Weak blow . 0 - 2".

FS:No blow



PRESSURE SUMMARY

Time (Min.)	Pressure (psig)	Temp (deg F)	Annotation
0	1650.05	108.42	Initial Hydro-static
2	21.61	107.68	Open To Flow (1)
29	51.38	108.39	Shut-In(1)
92	1084.30	109.16	End Shut-In(1)
92	56.16	108.82	Open To Flow (2)
150	105.59	109.43	Shut-In(2)
244	1083.78	110.02	End Shut-In(2)
245	1600.25	110.11	Final Hydro-static

Recovery

Length (ft)	Description	Volume (bbl)
145.00	SGCM/w trace of oil 2%g 98% ^m	0.71

Gas Rates

	Choke (inches)	Pressure (psig)	Gas Rate (Mcf/d)



**TRILOBITE
TESTING, INC.**

DRILL STEM TEST REPORT

TOOL DIAGRAM

Murfin Drilling, Co. Inc.

14-23s-12w Stafford,KS

250 N.Water,Ste.300
Wichita KS .67202

Claypool #1-14

Job Ticket: 54249

DST#: 1

ATTN: Chuck Schmaltz

Test Start: 2014.09.01 @ 09:07:42

Tool Information

Drill Pipe:	Length: 3106.00 ft	Diameter: 3.80 inches	Volume: 43.57 bbl	Tool Weight: 2400.00 lb
Heavy Wt. Pipe:	Length: 0.00 ft	Diameter: 0.00 inches	Volume: 0.00 bbl	Weight set on Packer: 24000.00 lb
Drill Collar:	Length: 248.00 ft	Diameter: 2.25 inches	Volume: 1.22 bbl	Weight to Pull Loose: 70000.00 lb
			<u>Total Volume: 44.79 bbl</u>	Tool Chased 0.00 ft
Drill Pipe Above KB:	15.00 ft			String Weight: Initial 64000.00 lb
Depth to Top Packer:	3367.00 ft			Final 63000.00 lb
Depth to Bottom Packer:	ft			
Interval between Packers:	78.00 ft			
Tool Length:	106.00 ft			
Number of Packers:	2	Diameter: 6.75 inches		

Tool Comments:

Tool Description

Tool Description	Length (ft)	Serial No.	Position	Depth (ft)	Accum. Lengths
Change Over Sub	1.00			3340.00	
Shut In Tool	5.00			3345.00	
Hydraulic tool	5.00			3350.00	
Jars	5.00			3355.00	
Safety Joint	3.00			3358.00	
Packer	4.00			3362.00	28.00 Bottom Of Top Packer
Packer	5.00			3367.00	
Stubb	1.00			3368.00	
Recorder	0.00	8352	Outside	3368.00	
Recorder	0.00	8370	Inside	3368.00	
Perforations	8.00			3376.00	
Blank Spacing	64.00			3440.00	
Bullnose	5.00			3445.00	78.00 Bottom Packers & Anchor

Total Tool Length: 106.00



**TRILOBITE
TESTING, INC**

DRILL STEM TEST REPORT

FLUID SUMMARY

Murfin Drilling, Co. Inc.

14-23s-12w Stafford,KS

250 N.Water,Ste.300
Wichita KS .67202

Claypool #1-14

Job Ticket: 54249

DST#: 1

ATTN: Chuck Schmaltz

Test Start: 2014.09.01 @ 09:07:42

Mud and Cushion Information

Mud Type: Gel Chem

Cushion Type:

Oil API:

deg API

Mud Weight: 9.00 lb/gal

Cushion Length:

ft

Water Salinity:

7200 ppm

Viscosity: 57.00 sec/qt

Cushion Volume:

bbbl

Water Loss: 7.17 in³

Gas Cushion Type:

Resistivity: 0.00 ohm.m

Gas Cushion Pressure:

psig

Salinity: 7200.00 ppm

Filter Cake: 0.20 inches

Recovery Information

Recovery Table

Length ft	Description	Volume bbl
145.00	SGCMw trace of oil 2%g 98%m	0.713

Total Length: 145.00 ft

Total Volume: 0.713 bbl

Num Fluid Samples: 0

Num Gas Bombs: 0

Serial #: none

Laboratory Name:

Laboratory Location:

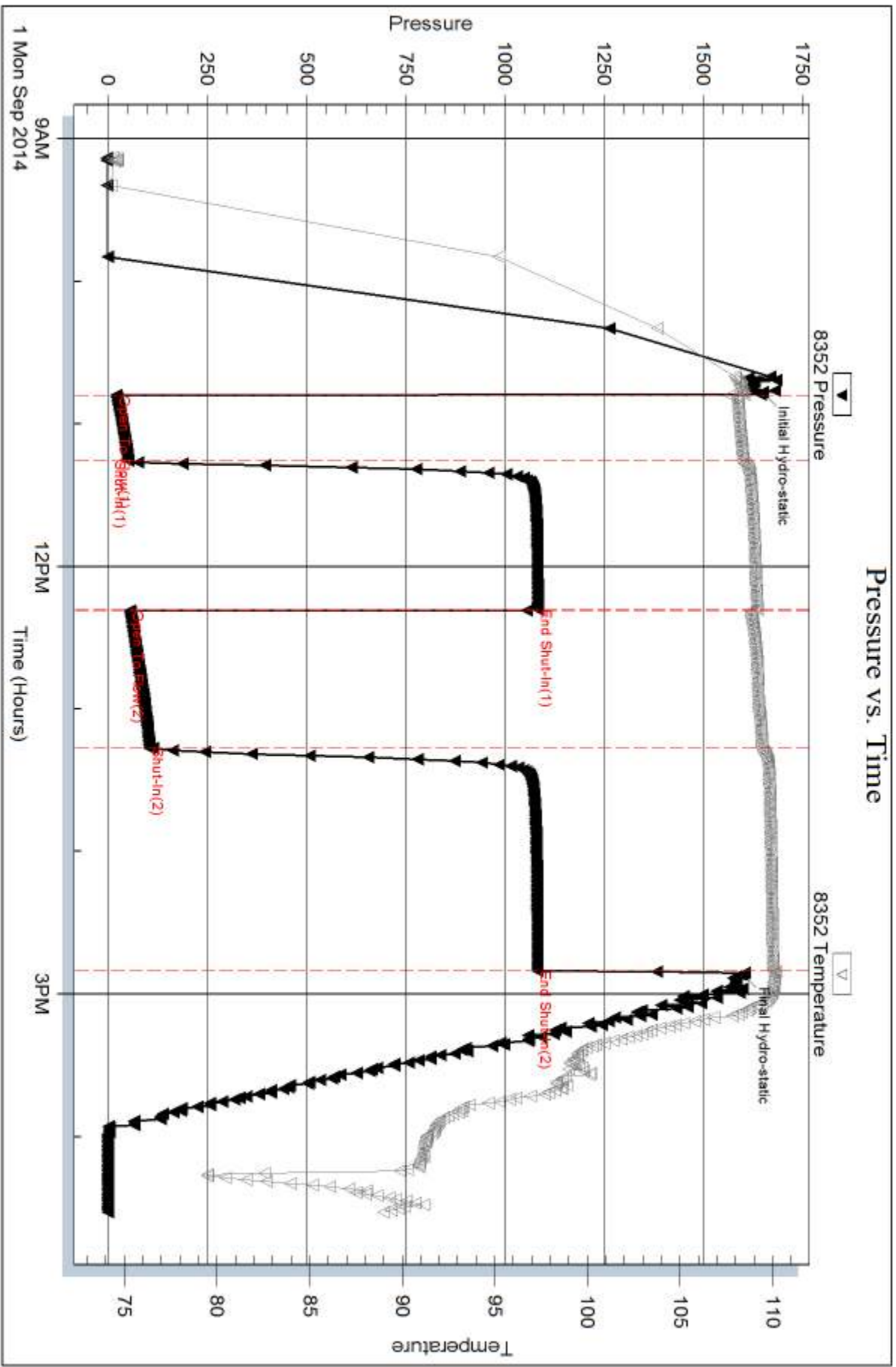
Recovery Comments:

Serial #: 8352

Outside Murfin Drilling Co. Inc.

Claypod #1-14

DST Test Number: 1



Triobite Testing, Inc

Ref. No: 54249

Printed: 2014.09.05 @ 10:42:17

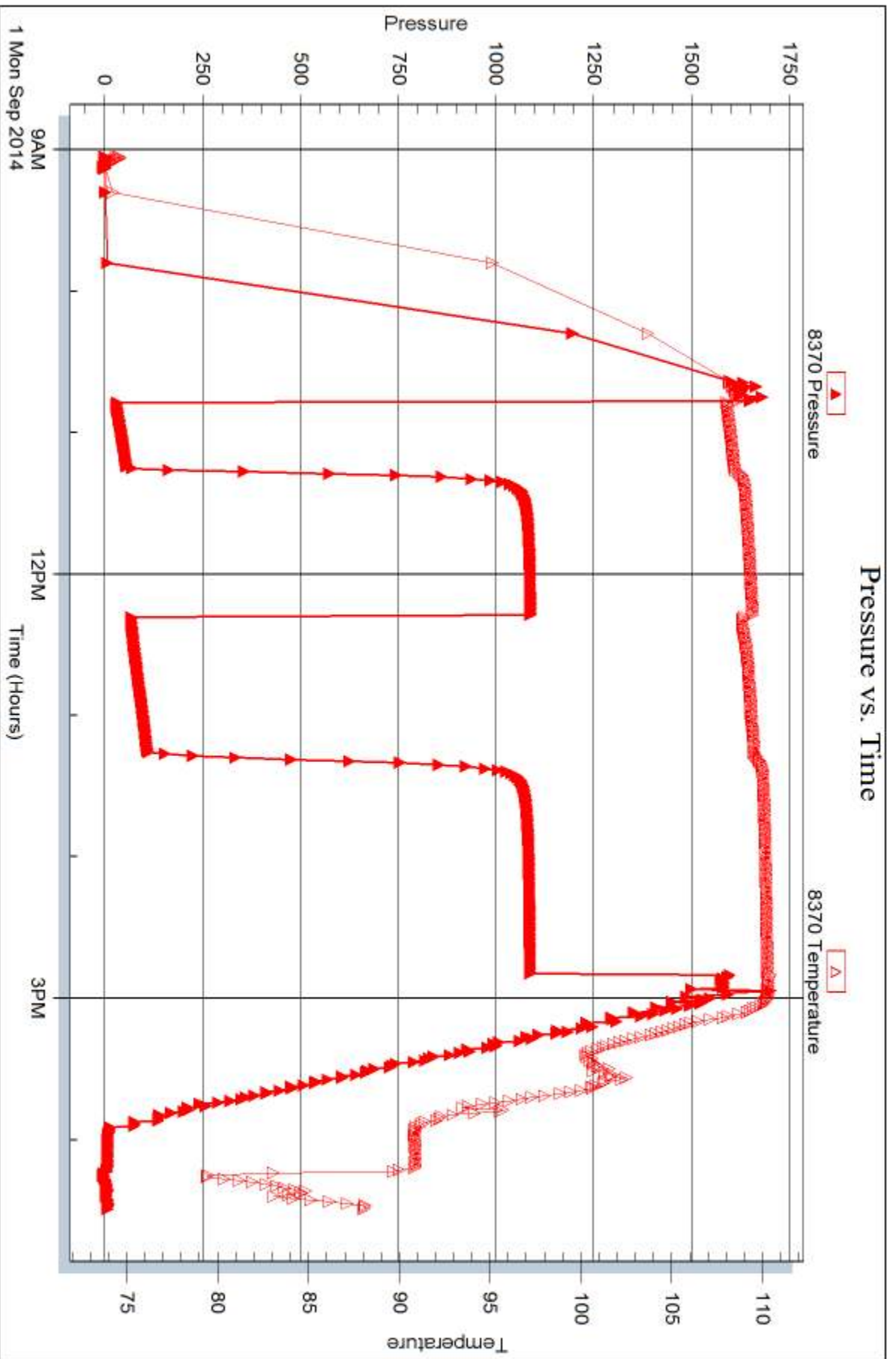
Serial #: 8370

Inside

Murfin Drilling Co. Inc.

Claypod #1-14

DST Test Number: 1



Trilobite Testing, Inc

Ref. No: 54249

Printed: 2014.09.05 @ 10:42:17



DRILL STEM TEST REPORT

Prepared For: **Murfin Drilling. Co. Inc.**

250 N. Water, Ste. 300
Wichita KS .67202

ATTN: Chuck Schmaltz

Claypool #1-14

14-23s-12w Stafford,KS

Start Date: 2014.09.02 @ 04:58:30

End Date: 2014.09.02 @ 12:51:45

Job Ticket #: 54250 DST #: 2

Trilobite Testing, Inc
1515 Commerce Parkway Hays, KS 67601
ph: 785-625-4778 fax: 785-625-5620

Printed: 2014.09.05 @ 10:41:45



TRILOBITE TESTING, INC.

DRILL STEM TEST REPORT

Murfin Drilling, Co. Inc.

14-23s-12w Stafford,KS

250 N.Water,Ste.300
Wichita KS .67202

Claypool #1-14

Job Ticket: 54250

DST#: 2

ATTN: Chuck Schmaltz

Test Start: 2014.09.02 @ 04:58:30

GENERAL INFORMATION:

Formation: **LKC G-L**

Deviated: No Whipstock: ft (KB)

Time Tool Opened: 06:37:15

Time Test Ended: 12:51:45

Test Type: Conventional Bottom Hole (Reset)

Tester: Gary Pevoteaux

Unit No: 56

Interval: 3475.00 ft (KB) To 3610.00 ft (KB) (TVD)

Reference Elevations: 1845.00 ft (KB)

Total Depth: 3610.00 ft (KB) (TVD)

1834.00 ft (CF)

Hole Diameter: 7.88 inches Hole Condition: Fair

KB to GR/CF: 11.00 ft

Serial #: 8352 Outside

Press@RunDepth: 289.25 psig @ 3476.00 ft (KB)

Capacity: 8000.00 psig

Start Date: 2014.09.02

End Date:

2014.09.02

Last Calib.:

2014.09.02

Start Time:

04:58:35

End Time:

12:51:44

Time On Btm:

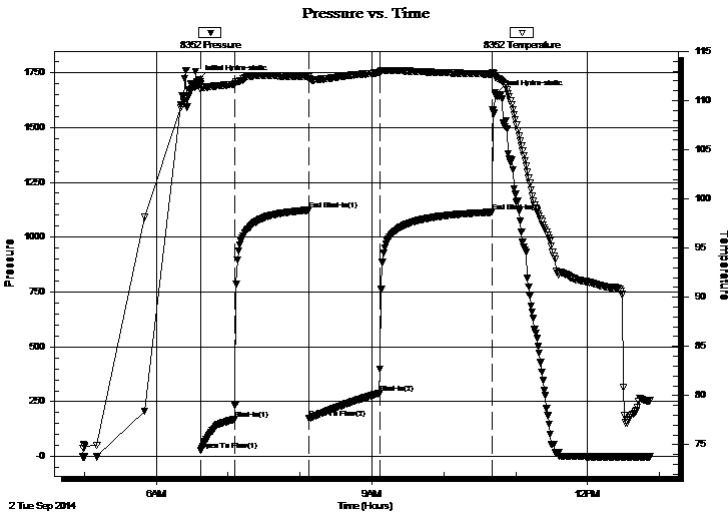
2014.09.02 @ 06:35:45

Time Off Btm:

2014.09.02 @ 10:43:00

TEST COMMENT: IF:Fair to strong blow . B.O.B. in 24 mins.
IS:No blow .
FF:Fair to strong blow . B.O.B. in 35 mins.
FS:No blow .

PRESSURE SUMMARY



Time (Min.)	Pressure (psig)	Temp (deg F)	Annotation
0	1718.02	111.64	Initial Hydro-static
2	29.21	111.14	Open To Flow (1)
30	170.93	111.68	Shut-In(1)
92	1123.40	112.47	End Shut-In(1)
92	174.50	112.19	Open To Flow (2)
151	289.25	112.84	Shut-In(2)
245	1114.15	112.71	End Shut-In(2)
248	1648.31	112.41	Final Hydro-static

Recovery

Length (ft)	Description	Volume (bbl)
315.00	MW /w few o specs 3% m 97% w	2.16
125.00	SOCMW 2% o 16% m 82% w	1.75
150.00	SOCWM 3% o 47% w 50% m	2.10
0.00	150 ft. of GIP	0.00

* Recovery from multiple tests

Gas Rates

	Choke (inches)	Pressure (psig)	Gas Rate (Mcf/d)



**TRILOBITE
TESTING, INC.**

DRILL STEM TEST REPORT

TOOL DIAGRAM

Murfin Drilling, Co. Inc.

14-23s-12w Stafford,KS

250 N.Water,Ste.300
Wichita KS .67202

Claypool #1-14

Job Ticket: 54250

DST#: 2

ATTN: Chuck Schmaltz

Test Start: 2014.09.02 @ 04:58:30

Tool Information

Drill Pipe:	Length: 3203.00 ft	Diameter: 3.80 inches	Volume: 44.93 bbl	Tool Weight: 2400.00 lb
Heavy Wt. Pipe:	Length: 0.00 ft	Diameter: 0.00 inches	Volume: 0.00 bbl	Weight set on Packer: 24000.00 lb
Drill Collar:	Length: 248.00 ft	Diameter: 2.25 inches	Volume: 1.22 bbl	Weight to Pull Loose: 86000.00 lb
			<u>Total Volume: 46.15 bbl</u>	Tool Chased 0.00 ft
Drill Pipe Above KB:	4.00 ft			String Weight: Initial 65000.00 lb
Depth to Top Packer:	3475.00 ft			Final 67000.00 lb
Depth to Bottom Packer:	ft			
Interval between Packers:	135.00 ft			
Tool Length:	163.00 ft			
Number of Packers:	2	Diameter: 6.75 inches		

Tool Comments:

Tool Description

Tool Description	Length (ft)	Serial No.	Position	Depth (ft)	Accum. Lengths
Change Over Sub	1.00			3448.00	
Shut In Tool	5.00			3453.00	
Hydraulic tool	5.00			3458.00	
Jars	5.00			3463.00	
Safety Joint	3.00			3466.00	
Packer	4.00			3470.00	28.00 Bottom Of Top Packer
Packer	5.00			3475.00	
Stubb	1.00			3476.00	
Recorder	0.00	8352	Outside	3476.00	
Recorder	0.00	8370	Inside	3476.00	
Perforations	5.00			3481.00	
Blank Spacing	124.00			3605.00	
Bullnose	5.00			3610.00	135.00 Bottom Packers & Anchor

Total Tool Length: 163.00



**TRILOBITE
TESTING, INC**

DRILL STEM TEST REPORT

FLUID SUMMARY

Murfin Drilling. Co. Inc.

14-23s-12w Stafford,KS

250 N.Water,Ste.300
Wichita KS .67202

Claypool #1-14

Job Ticket: 54250

DST#: 2

ATTN: Chuck Schmaltz

Test Start: 2014.09.02 @ 04:58:30

Mud and Cushion Information

Mud Type: Gel Chem

Cushion Type:

Oil API:

deg API

Mud Weight: 9.00 lb/gal

Cushion Length:

ft

Water Salinity:

91000 ppm

Viscosity: 54.00 sec/qt

Cushion Volume:

bbbl

Water Loss: 8.17 in³

Gas Cushion Type:

Resistivity: 0.00 ohm.m

Gas Cushion Pressure:

psig

Salinity: 7200.00 ppm

Filter Cake: 0.20 inches

Recovery Information

Recovery Table

Length ft	Description	Volume bbbl
315.00	MW /w few o specs 3% <i>m</i> 97% <i>w</i>	2.159
125.00	SOCMW 2% <i>o</i> 16% <i>m</i> 82% <i>w</i>	1.753
150.00	SOCWM 3% <i>o</i> 47% <i>w</i> 50% <i>m</i>	2.104
0.00	150 ft.of GIP	0.000

Total Length: 590.00 ft

Total Volume: 6.016 bbl

Num Fluid Samples: 0

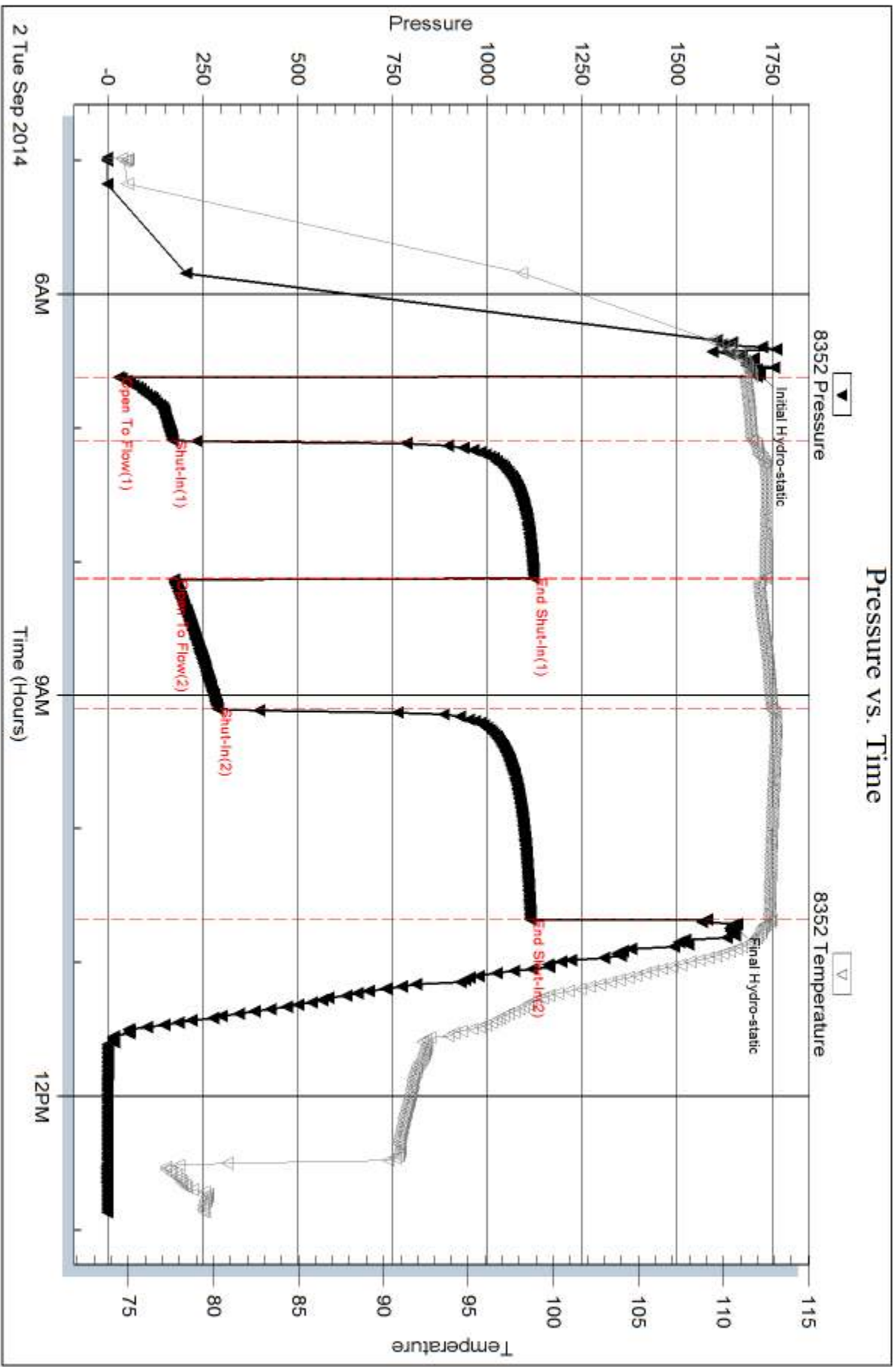
Num Gas Bombs: 0

Serial #: none

Laboratory Name:

Laboratory Location:

Recovery Comments: RW .07 ohms@86deg.



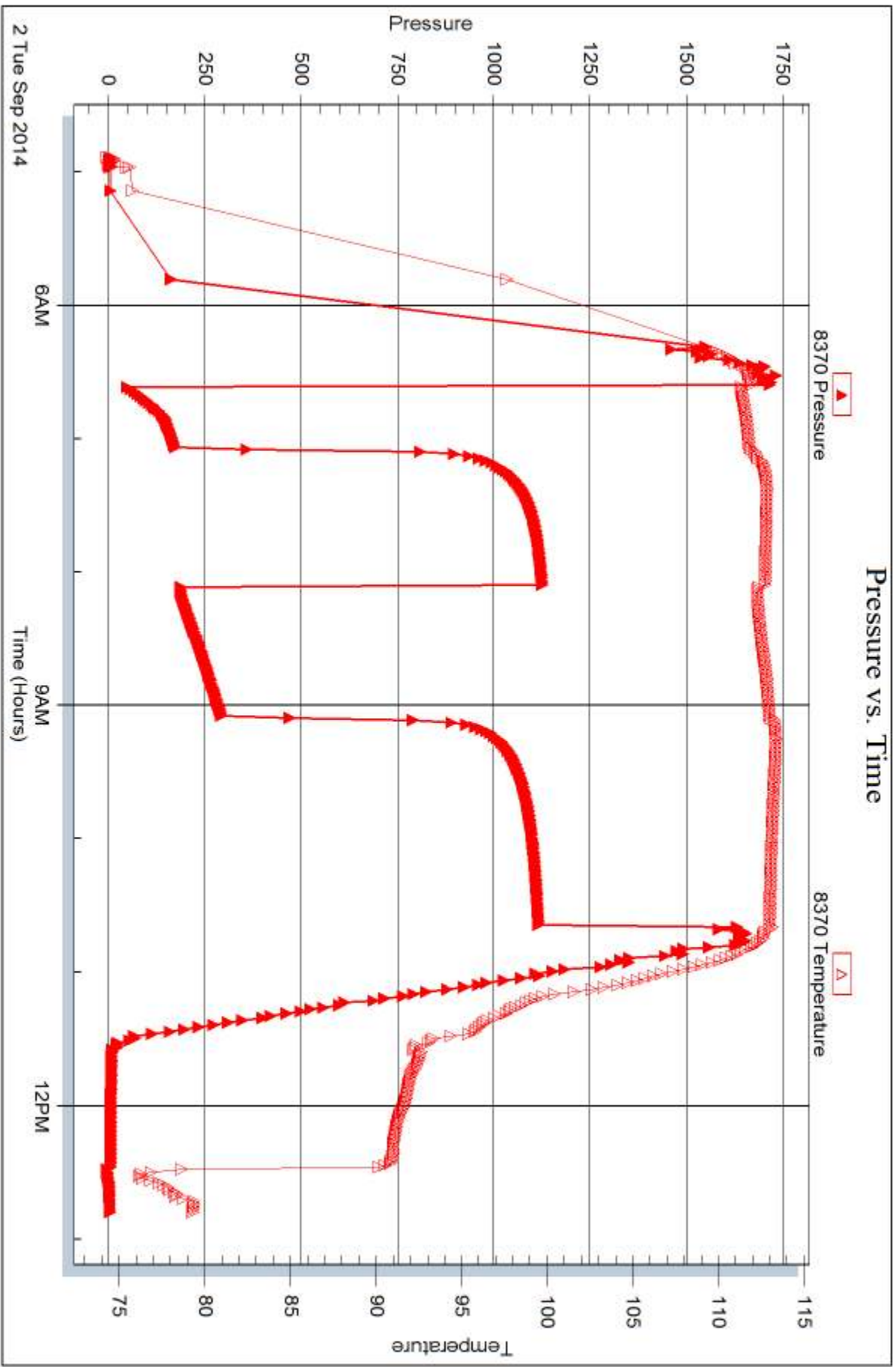
Serial #: 8370

Inside

Murfin Drilling Co. Inc.

Claypod #1-14

DST Test Number: 2





DRILL STEM TEST REPORT

Prepared For: **Murfin Drilling. Co. Inc.**

250 N. Water, Ste. 300
Wichita KS .67202

ATTN: Chuck Schmaltz

Claypool #1-14

14-23s-12w Stafford,KS

Start Date: 2014.09.02 @ 20:30:55

End Date: 2014.09.03 @ 03:19:25

Job Ticket #: 57851 DST #: 3

Trilobite Testing, Inc
1515 Commerce Parkway Hays, KS 67601
ph: 785-625-4778 fax: 785-625-5620

Printed: 2014.09.05 @ 10:41:23



**TRILOBITE
TESTING, INC**

DRILL STEM TEST REPORT

Murfin Drilling, Co. Inc.

14-23s-12w Stafford,KS

250 N.Water,Ste.300
Wichita KS .67202

Claypool #1-14

Job Ticket: 57851

DST#: 3

ATTN: Chuck Schmalz

Test Start: 2014.09.02 @ 20:30:55

GENERAL INFORMATION:

Formation: **Pawnee**

Deviated: No Whipstock: ft (KB)

Time Tool Opened: 22:22:55

Time Test Ended: 03:19:25

Test Type: Conventional Bottom Hole (Reset)

Tester: Gary Pevoteaux

Unit No: 56

Interval: 3582.00 ft (KB) To 3666.00 ft (KB) (TVD)

Reference Elevations: 1845.00 ft (KB)

Total Depth: 3666.00 ft (KB) (TVD)

1834.00 ft (CF)

Hole Diameter: 7.88 inches Hole Condition: Fair

KB to GR/CF: 11.00 ft

Serial #: 8352 Outside

Press@RunDepth: 34.29 psig @ 3583.00 ft (KB)

Capacity: 8000.00 psig

Start Date: 2014.09.02

End Date:

2014.09.03

Last Calib.: 2014.09.03

Start Time: 20:31:00

End Time:

03:19:24

Time On Btm: 2014.09.02 @ 22:21:55

Time Off Btm: 2014.09.03 @ 01:32:55

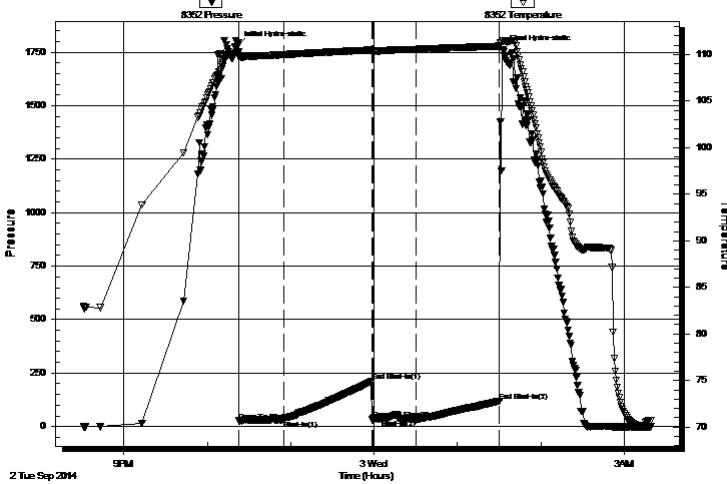
TEST COMMENT: IF:Weak blow . 1/2".

IS:No blow .

FF:No blow .

FS:No blow .

Pressure vs. Time



PRESSURE SUMMARY

Time (Min.)	Pressure (psig)	Temp (deg F)	Annotation
0	1779.36	110.24	Initial Hydro-static
1	25.92	109.74	Open To Flow (1)
33	31.33	109.99	Shut-In(1)
97	211.55	110.50	End Shut-In(1)
98	33.96	110.32	Open To Flow (2)
129	34.29	110.56	Shut-In(2)
189	118.91	110.91	End Shut-In(2)
191	1763.30	111.47	Final Hydro-static

Recovery

Length (ft)	Description	Volume (bbl)
25.00	Drig.mud	0.12

Gas Rates

Choke (inches)	Pressure (psig)	Gas Rate (Mcf/d)

* Recovery from multiple tests



**TRILOBITE
TESTING, INC.**

DRILL STEM TEST REPORT

TOOL DIAGRAM

Murfin Drilling, Co. Inc.

14-23s-12w Stafford,KS

250 N.Water,Ste.300
Wichita KS .67202

Claypool #1-14

Job Ticket: 57851

DST#: 3

ATTN: Chuck Schmaltz

Test Start: 2014.09.02 @ 20:30:55

Tool Information

Drill Pipe:	Length: 3326.00 ft	Diameter: 3.80 inches	Volume: 46.66 bbl	Tool Weight:	2400.00 lb
Heavy Wt. Pipe:	Length: 0.00 ft	Diameter: 0.00 inches	Volume: 0.00 bbl	Weight set on Packer:	24000.00 lb
Drill Collar:	Length: 248.00 ft	Diameter: 2.25 inches	Volume: 1.22 bbl	Weight to Pull Loose:	97000.00 lb
			<u>Total Volume: 47.88 bbl</u>	Tool Chased	0.00 ft
Drill Pipe Above KB:	20.00 ft			String Weight: Initial	66000.00 lb
Depth to Top Packer:	3582.00 ft			Final	66000.00 lb
Depth to Bottom Packer:	ft				
Interval between Packers:	84.00 ft				
Tool Length:	112.00 ft				
Number of Packers:	2	Diameter: 6.75 inches			

Tool Comments:

Tool Description

Tool Description	Length (ft)	Serial No.	Position	Depth (ft)	Accum. Lengths
Change Over Sub	1.00			3555.00	
Shut In Tool	5.00			3560.00	
Hydraulic tool	5.00			3565.00	
Jars	5.00			3570.00	
Safety Joint	3.00			3573.00	
Packer	4.00			3577.00	28.00 Bottom Of Top Packer
Packer	5.00			3582.00	
Stubb	1.00			3583.00	
Recorder	0.00	8352	Outside	3583.00	
Recorder	0.00	8370	Inside	3583.00	
Perforations	6.00			3589.00	
Blank Spacing	63.00			3652.00	
Perforations	9.00			3661.00	
Bullnose	5.00			3666.00	84.00 Bottom Packers & Anchor

Total Tool Length: 112.00



**TRILOBITE
TESTING, INC.**

DRILL STEM TEST REPORT

FLUID SUMMARY

Murfin Drilling, Co. Inc.

14-23s-12w Stafford,KS

250 N.Water,Ste.300
Wichita KS .67202

Claypool #1-14

Job Ticket: 57851

DST#: 3

ATTN: Chuck Schmaltz

Test Start: 2014.09.02 @ 20:30:55

Mud and Cushion Information

Mud Type: Gel Chem

Cushion Type:

Oil API:

deg API

Mud Weight: 9.00 lb/gal

Cushion Length:

ft

Water Salinity:

8000 ppm

Viscosity: 62.00 sec/qt

Cushion Volume:

bbbl

Water Loss: 7.98 in³

Gas Cushion Type:

Resistivity: 0.00 ohm.m

Gas Cushion Pressure:

psig

Salinity: 8000.00 ppm

Filter Cake: 0.20 inches

Recovery Information

Recovery Table

Length ft	Description	Volume bbl
25.00	Drig.mud	0.123

Total Length: 25.00 ft Total Volume: 0.123 bbl

Num Fluid Samples: 0

Num Gas Bombs: 0

Serial #: none

Laboratory Name:

Laboratory Location:

Recovery Comments:

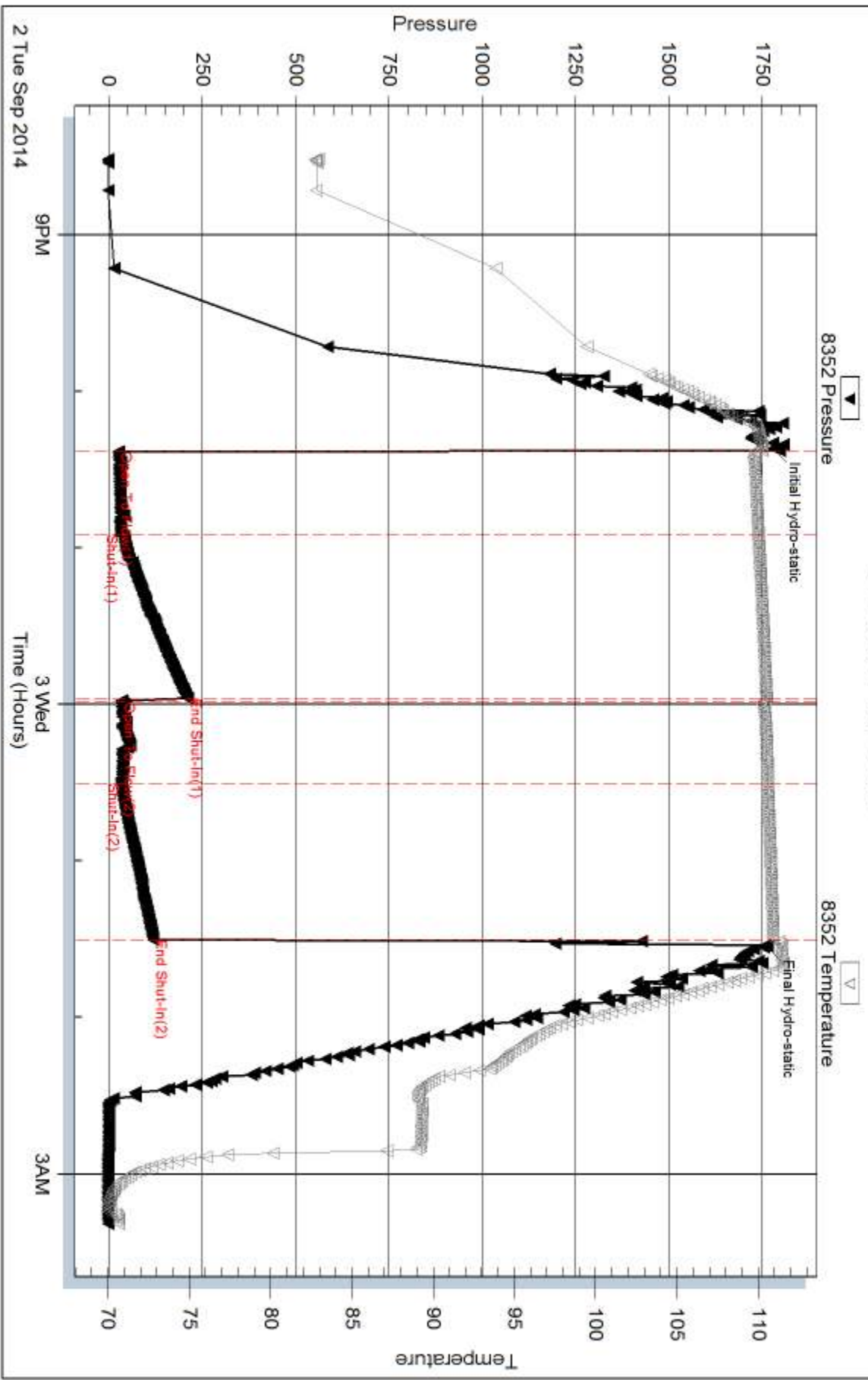
Serial #: 8352

Outside Murfin Drilling Co. Inc.

Claypod #1-14

DST Test Number: 3

Pressure vs. Time



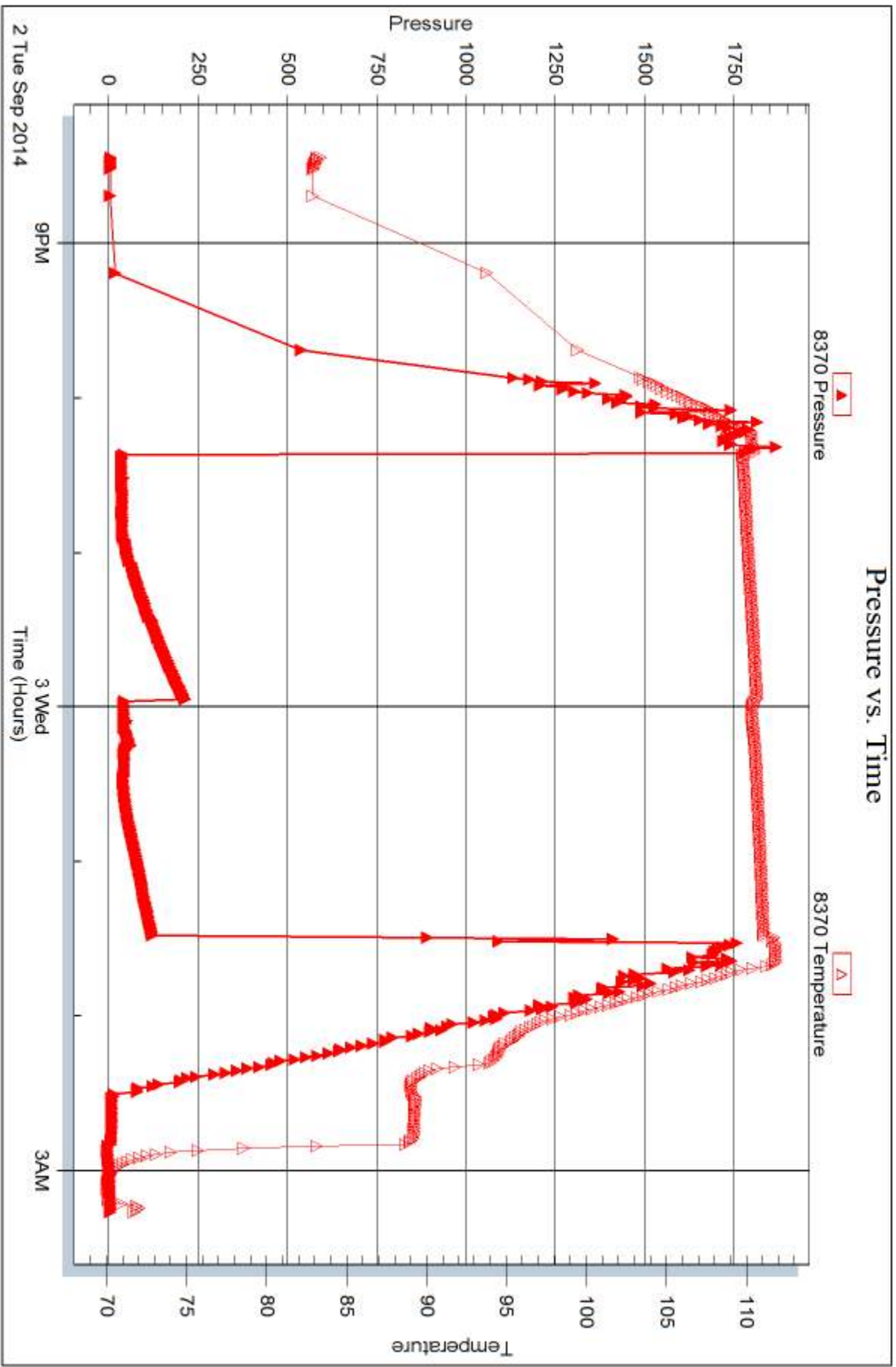
Serial #: 8370

Inside

Murfin Drilling Co. Inc.

Claypod #1-14

DST Test Number: 3





DRILL STEM TEST REPORT

Prepared For: **Murfin Drilling. Co. Inc.**

250 N. Water, Ste. 300
Wichita KS .67202

ATTN: Chuck Schmaltz

Claypool #1-14

14-23s-12w Stafford,KS

Start Date: 2014.09.03 @ 09:26:08

End Date: 2014.09.03 @ 17:19:38

Job Ticket #: 54139 DST #: 4

Trilobite Testing, Inc
1515 Commerce Parkway Hays, KS 67601
ph: 785-625-4778 fax: 785-625-5620

Printed: 2014.09.05 @ 10:41:00



**TRILOBITE
TESTING, INC**

DRILL STEM TEST REPORT

Murfin Drilling, Co. Inc.

14-23s-12w Stafford,KS

250 N.Water,Ste.300
Wichita KS .67202

Claypool #1-14

Job Ticket: 54139

DST#: 4

ATTN: Chuck Schmalz

Test Start: 2014.09.03 @ 09:26:08

GENERAL INFORMATION:

Formation: **Viola**

Deviated: No Whipstock: ft (KB)

Time Tool Opened: 11:24:08

Time Test Ended: 17:19:38

Test Type: Conventional Bottom Hole (Reset)

Tester: Matt Smith

Unit No: 53

Interval: 3648.00 ft (KB) To 3737.00 ft (KB) (TVD)

Reference Elevations: 1845.00 ft (KB)

Total Depth: 3737.00 ft (KB) (TVD)

1834.00 ft (CF)

Hole Diameter: 7.88 inches Hole Condition: Fair

KB to GR/CF: 11.00 ft

Serial #: 6773 Outside

Press@RunDepth: 88.82 psig @ 3649.00 ft (KB)

Capacity: 8000.00 psig

Start Date: 2014.09.03

End Date:

2014.09.03

Last Calib.: 2014.09.03

Start Time: 09:26:13

End Time:

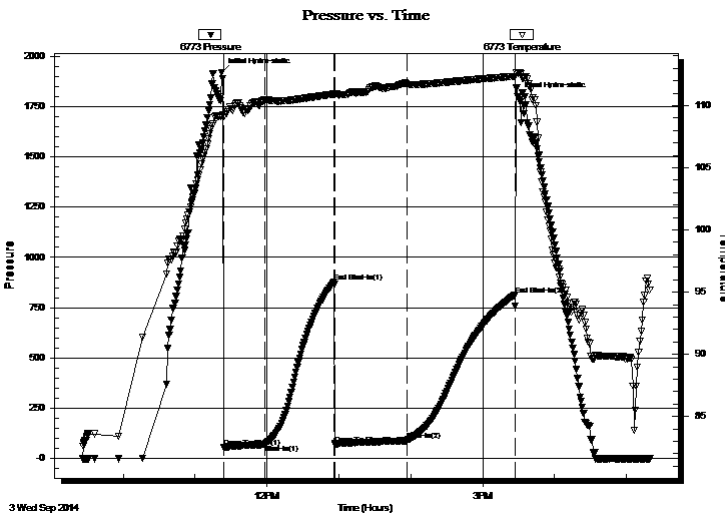
17:19:37

Time On Btm: 2014.09.03 @ 11:22:08

Time Off Btm: 2014.09.03 @ 15:29:08

TEST COMMENT: IF: Weak blow . Surf., - 1 1/2".
IS: No blow .
FF: Weak blow . Surf., - 1/4".
FS: No blow .

PRESSURE SUMMARY



Time (Min.)	Pressure (psig)	Temp (deg F)	Annotation
0	1919.70	109.22	Initial Hydro-static
2	53.67	109.12	Open To Flow (1)
36	68.84	110.46	Shut-In(1)
94	877.57	110.93	End Shut-In(1)
95	72.64	110.91	Open To Flow (2)
155	88.82	111.75	Shut-In(2)
245	814.49	112.37	End Shut-In(2)
247	1796.99	112.63	Final Hydro-static

Recovery

Length (ft)	Description	Volume (bbl)
60.00	Drig Mud w / slt trc oil 100%m	0.30

* Recovery from multiple tests

Gas Rates

Choke (inches)	Pressure (psig)	Gas Rate (Mcf/d)



**TRILOBITE
TESTING, INC.**

DRILL STEM TEST REPORT

TOOL DIAGRAM

Murfin Drilling, Co. Inc.

14-23s-12w Stafford,KS

250 N.Water,Ste.300
Wichita KS .67202

Claypool #1-14

Job Ticket: 54139

DST#: 4

ATTN: Chuck Schmaltz

Test Start: 2014.09.03 @ 09:26:08

Tool Information

Drill Pipe:	Length: 3387.00 ft	Diameter: 3.80 inches	Volume: 47.51 bbl	Tool Weight: 2400.00 lb
Heavy Wt. Pipe:	Length: 0.00 ft	Diameter: 0.00 inches	Volume: 0.00 bbl	Weight set on Packer: 22000.00 lb
Drill Collar:	Length: 248.00 ft	Diameter: 2.25 inches	Volume: 1.22 bbl	Weight to Pull Loose: 74000.00 lb
			<u>Total Volume: 48.73 bbl</u>	Tool Chased 0.00 ft
Drill Pipe Above KB:	15.00 ft			String Weight: Initial 68000.00 lb
Depth to Top Packer:	3648.00 ft			Final 68000.00 lb
Depth to Bottom Packer:	ft			
Interval between Packers:	89.00 ft			
Tool Length:	117.00 ft			
Number of Packers:	2	Diameter: 6.75 inches		

Tool Comments:

Tool Description

Tool Description	Length (ft)	Serial No.	Position	Depth (ft)	Accum. Lengths
Change Over Sub	1.00			3621.00	
Shut In Tool	5.00			3626.00	
Hydraulic tool	5.00			3631.00	
Jars	5.00			3636.00	
Safety Joint	3.00			3639.00	
Packer	4.00			3643.00	28.00 Bottom Of Top Packer
Packer	5.00			3648.00	
Stubb	1.00			3649.00	
Recorder	0.00	6773	Outside	3649.00	
Recorder	0.00	6719	Inside	3649.00	
Perforations	2.00			3651.00	
Change Over Sub	1.00			3652.00	
Blank Spacing	64.00			3716.00	
Change Over Sub	1.00			3717.00	
Perforations	17.00			3734.00	
Bullnose	3.00			3737.00	89.00 Bottom Packers & Anchor
Total Tool Length:	117.00				



**TRILOBITE
TESTING, INC**

DRILL STEM TEST REPORT

FLUID SUMMARY

Murfin Drilling, Co. Inc.

14-23s-12w Stafford,KS

250 N.Water,Ste.300
Wichita KS .67202

Claypool #1-14

Job Ticket: 54139

DST#: 4

ATTN: Chuck Schmaltz

Test Start: 2014.09.03 @ 09:26:08

Mud and Cushion Information

Mud Type: Gel Chem

Cushion Type:

Oil API:

deg API

Mud Weight: 10.00 lb/gal

Cushion Length:

ft

Water Salinity:

8500 ppm

Viscosity: 62.00 sec/qt

Cushion Volume:

bbbl

Water Loss: 9.18 in³

Gas Cushion Type:

Resistivity: 0.00 ohm.m

Gas Cushion Pressure:

psig

Salinity: 8500.00 ppm

Filter Cake: 0.20 inches

Recovery Information

Recovery Table

Length ft	Description	Volume bbl
60.00	Drig Mud w / slt trc oil 100%m	0.295

Total Length: 60.00 ft Total Volume: 0.295 bbl

Num Fluid Samples: 0

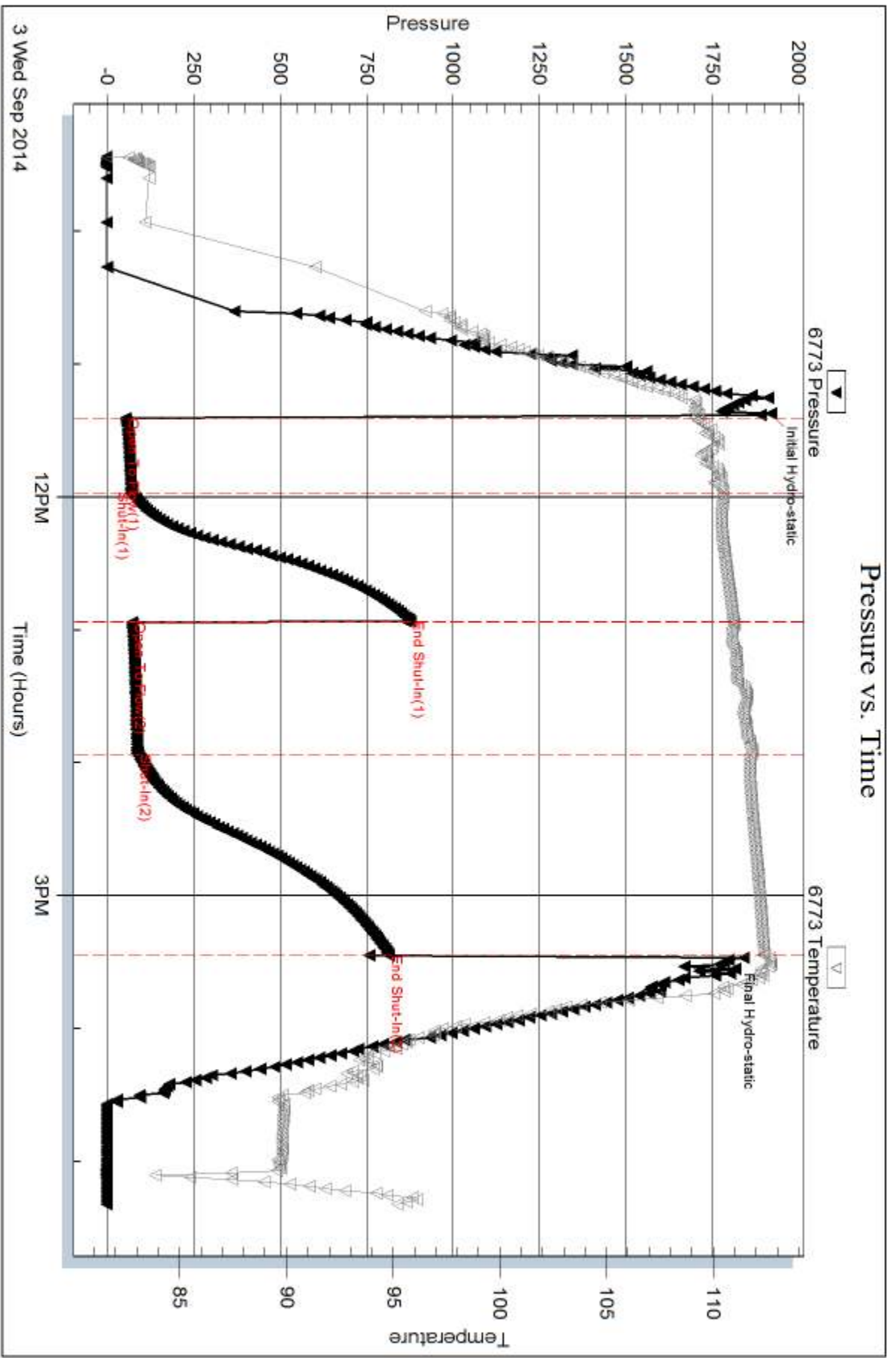
Num Gas Bombs: 0

Serial #: none

Laboratory Name:

Laboratory Location:

Recovery Comments:



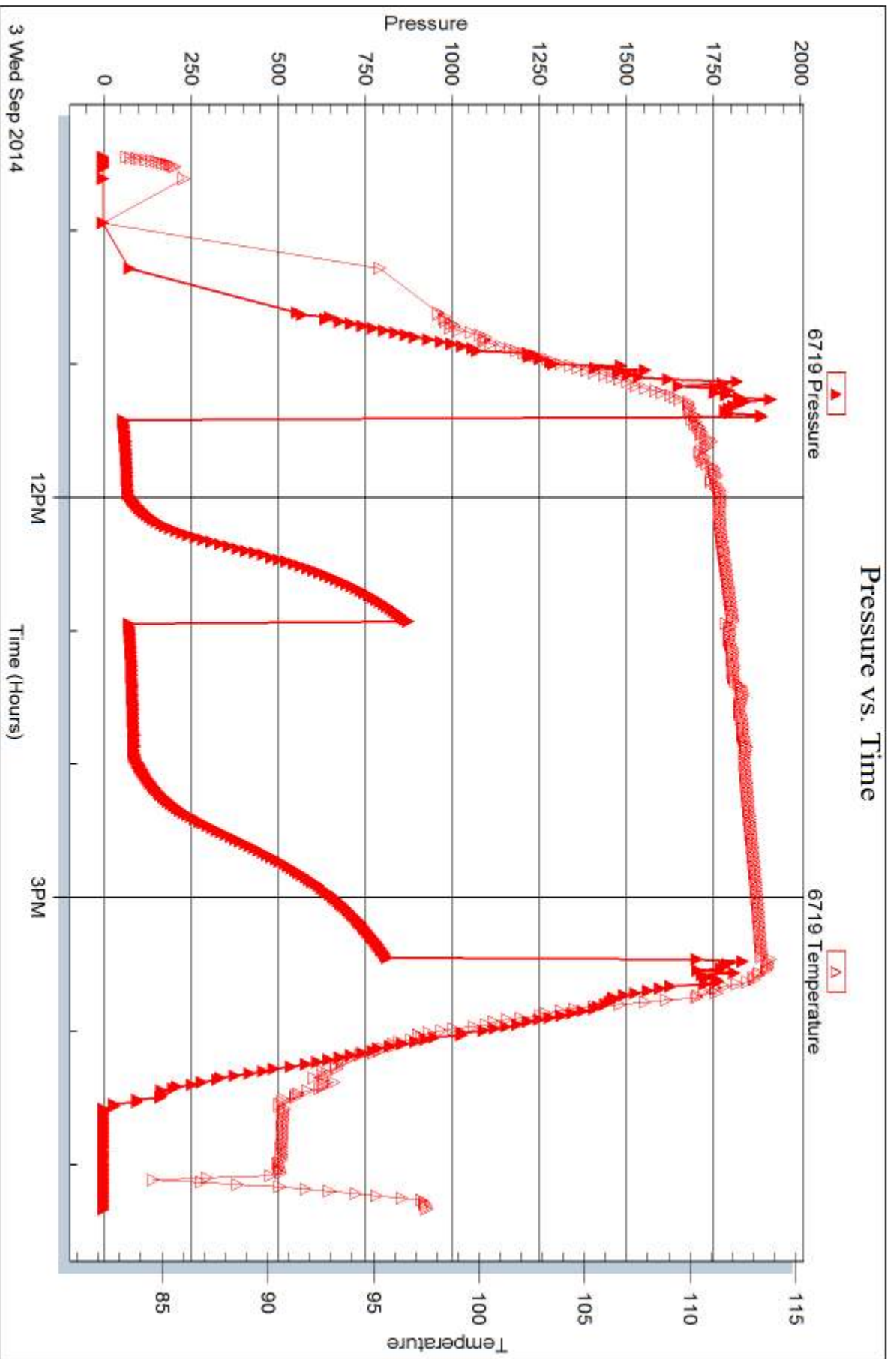
Serial #: 6719

Inside

Murfin Drilling Co. Inc.

Claypod #1-14

DST Test Number: 4



Trilobite Testing, Inc

Ref. No: 54139

Printed: 2014.09.05 @ 10:41:01



DRILL STEM TEST REPORT

Prepared For: **Murfin Drilling. Co. Inc.**

250 N. Water, Ste. 300
Wichita KS .67202

ATTN: Chuck Schmaltz

Claypool #1-14

14-23s-12w Stafford,KS

Start Date: 2014.09.04 @ 01:24:47

End Date: 2014.09.04 @ 10:19:47

Job Ticket #: 54140 DST #: 5

Trilobite Testing, Inc
1515 Commerce Parkway Hays, KS 67601
ph: 785-625-4778 fax: 785-625-5620

Printed: 2014.09.05 @ 10:40:23



TRILOBITE TESTING, INC.

DRILL STEM TEST REPORT

Murfin Drilling, Co. Inc.

14-23s-12w Stafford,KS

250 N.Water, Ste.300
Wichita KS .67202

Claypool #1-14

Job Ticket: 54140

DST#: 5

ATTN: Chuck Schmaltz

Test Start: 2014.09.04 @ 01:24:47

GENERAL INFORMATION:

Formation: **Arbuckle**

Deviated: No Whipstock: ft (KB)

Time Tool Opened: 03:26:47

Time Test Ended: 10:19:47

Test Type: Conventional Bottom Hole (Reset)

Tester: Matt Smith

Unit No: 53

Interval: 3712.00 ft (KB) To 3797.00 ft (KB) (TVD)

Reference Elevations: 1845.00 ft (KB)

Total Depth: 3797.00 ft (KB) (TVD)

1834.00 ft (CF)

Hole Diameter: 7.88 inches Hole Condition: Fair

KB to GR/CF: 11.00 ft

Serial #: 6773 Outside

Press@RunDepth: 1032.52 psig @ 3713.00 ft (KB)

Capacity: 8000.00 psig

Start Date: 2014.09.04

End Date:

2014.09.04

Last Calib.:

2014.09.04

Start Time: 01:24:52

End Time:

10:19:47

Time On Btm:

2014.09.04 @ 03:23:47

Time Off Btm:

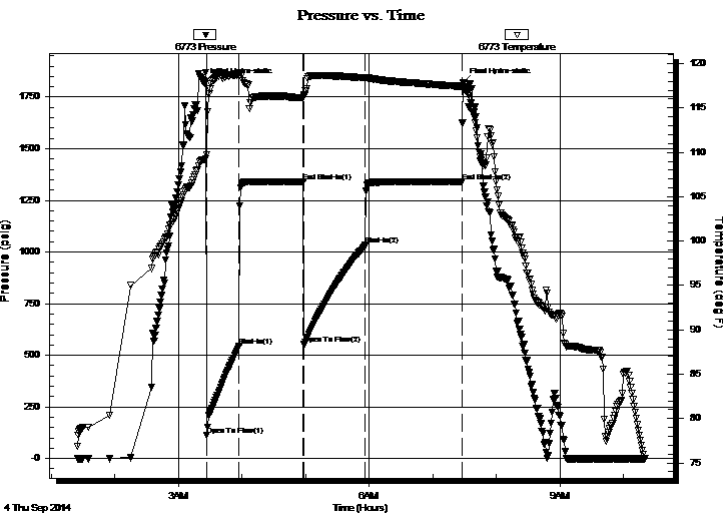
2014.09.04 @ 07:28:47

TEST COMMENT: IF: Strong blow . B.O.B. in 2 1/2 mins.

IS: No blow .

FF: Strong blow . B.O.B. in 3 mins.

FS: No blow .



PRESSURE SUMMARY

Time (Min.)	Pressure (psig)	Temp (deg F)	Annotation
0	1819.42	109.15	Initial Hydro-static
3	111.00	109.73	Open To Flow (1)
34	545.66	118.81	Shut-In(1)
94	1341.33	116.13	End Shut-In(1)
95	552.27	116.38	Open To Flow (2)
153	1032.52	118.41	Shut-In(2)
244	1340.97	117.42	End Shut-In(2)
245	1819.43	117.19	Final Hydro-static

Recovery

Length (ft)	Description	Volume (bbl)
62.00	GWCM 2%g 18%w 80%m	0.30
62.00	SOMCW 4%M 96%W	0.30
124.00	GOMCW 1%o 2%g 25%m 72%w	0.61
576.00	MCW 2%m 98%w	8.08
1172.00	MCW 30%m 70%w	16.44

Gas Rates

	Choke (inches)	Pressure (psig)	Gas Rate (Mcf/d)

* Recovery from multiple tests



**TRILOBITE
TESTING, INC.**

DRILL STEM TEST REPORT

TOOL DIAGRAM

Murfin Drilling, Co. Inc.

14-23s-12w Stafford,KS

250 N.Water,Ste.300
Wichita KS .67202

Claypool #1-14

Job Ticket: 54140

DST#: 5

ATTN: Chuck Schmaltz

Test Start: 2014.09.04 @ 01:24:47

Tool Information

Drill Pipe:	Length: 3449.00 ft	Diameter: 3.80 inches	Volume: 48.38 bbl	Tool Weight:	2400.00 lb
Heavy Wt. Pipe:	Length: 0.00 ft	Diameter: 0.00 inches	Volume: 0.00 bbl	Weight set on Packer:	24000.00 lb
Drill Collar:	Length: 248.00 ft	Diameter: 2.25 inches	Volume: 1.22 bbl	Weight to Pull Loose:	70000.00 lb
			<u>Total Volume: 49.60 bbl</u>	Tool Chased	0.00 ft
Drill Pipe Above KB:	13.00 ft			String Weight: Initial	68000.00 lb
Depth to Top Packer:	3712.00 ft			Final	70000.00 lb
Depth to Bottom Packer:	ft				
Interval between Packers:	85.00 ft				
Tool Length:	113.00 ft				
Number of Packers:	2	Diameter: 6.75 inches			

Tool Comments: Shale packer has been requested and in place of bottom packer on heavy tool. Sure the weight indicator was not correct.

Tool Description	Length (ft)	Serial No.	Position	Depth (ft)	Accum. Lengths
------------------	-------------	------------	----------	------------	----------------

Change Over Sub	1.00			3685.00	
Shut In Tool	5.00			3690.00	
Hydraulic tool	5.00			3695.00	
Jars	5.00			3700.00	
Safety Joint	3.00			3703.00	
Packer	4.00			3707.00	28.00 Bottom Of Top Packer
Packer	5.00			3712.00	
Stubb	1.00			3713.00	
Recorder	0.00	6773	Outside	3713.00	
Recorder	0.00	6719	Inside	3713.00	
Perforations	2.00			3715.00	
Change Over Sub	1.00			3716.00	
Drill Pipe	64.00			3780.00	
Change Over Sub	1.00			3781.00	
Perforations	13.00			3794.00	
Bullnose	3.00			3797.00	85.00 Bottom Packers & Anchor
Total Tool Length:	113.00				



**TRILOBITE
TESTING, INC**

DRILL STEM TEST REPORT

FLUID SUMMARY

Murfin Drilling, Co. Inc.

14-23s-12w Stafford,KS

250 N.Water,Ste.300
Wichita KS .67202

Claypool #1-14

Job Ticket: 54140

DST#: 5

ATTN: Chuck Schmaltz

Test Start: 2014.09.04 @ 01:24:47

Mud and Cushion Information

Mud Type: Gel Chem

Cushion Type:

Oil API:

48.5 deg API

Mud Weight: 10.00 lb/gal

Cushion Length:

ft

Water Salinity:

19000 ppm

Viscosity: 62.00 sec/qt

Cushion Volume:

bbf

Water Loss: 9.18 in³

Gas Cushion Type:

Resistivity: 0.00 ohm.m

Gas Cushion Pressure:

psig

Salinity: 8500.00 ppm

Filter Cake: 0.20 inches

Recovery Information

Recovery Table

Length ft	Description	Volume bbf
62.00	GWCM 2%g 18%w 80%m	0.305
62.00	SOMCW 4%M 96%W	0.305
124.00	GOMCW 1%o 2%g 25%m 72%w	0.610
576.00	MCW 2%m 98%w	8.080
1172.00	MCW 30%m 70%w	16.440

Total Length: 1996.00 ft Total Volume: 25.740 bbl

Num Fluid Samples: 0

Num Gas Bombs: 0

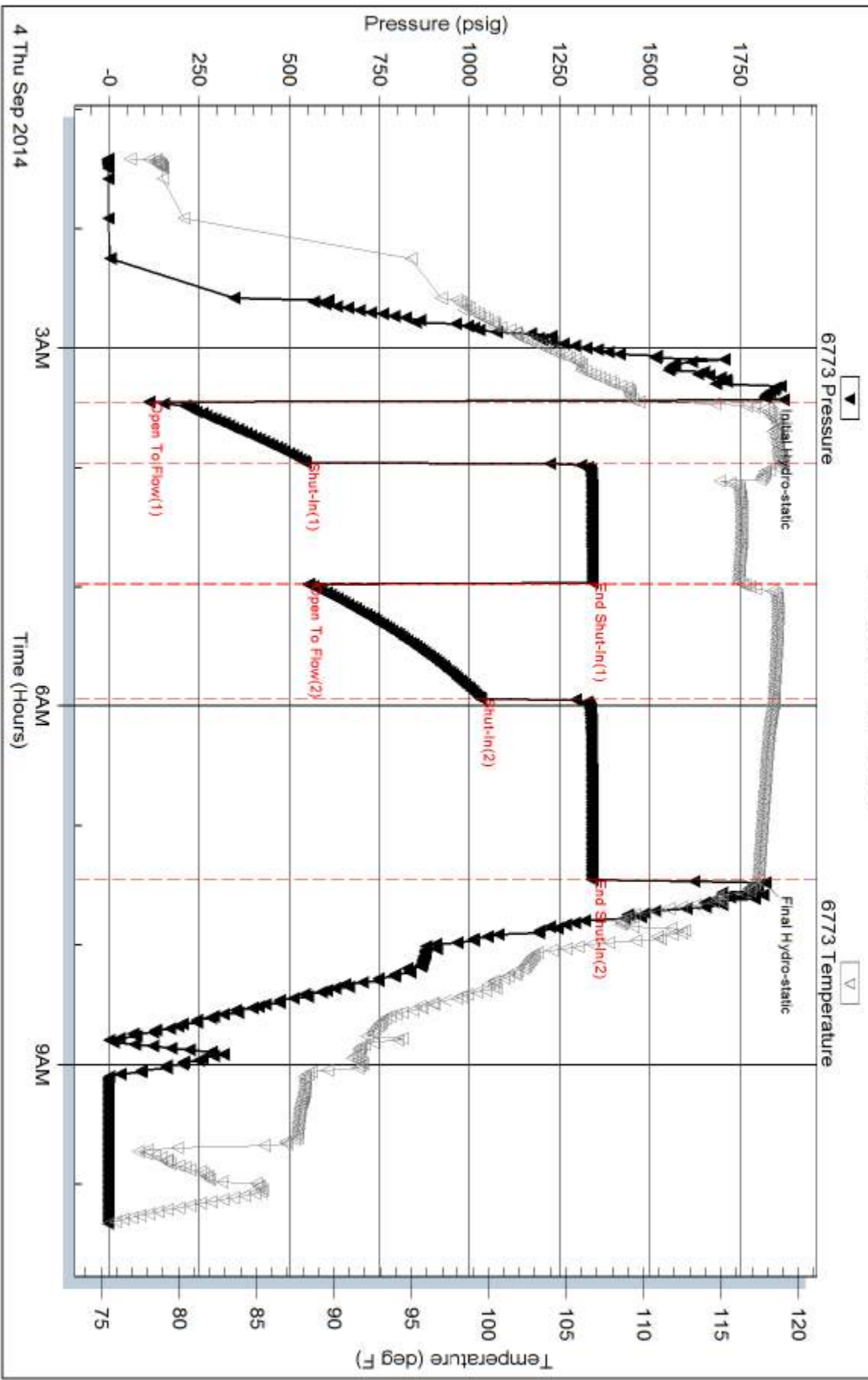
Serial #: none

Laboratory Name:

Laboratory Location:

Recovery Comments: RW .35 @ 75 degrees = 19,000 chlorides

Pressure vs. Time



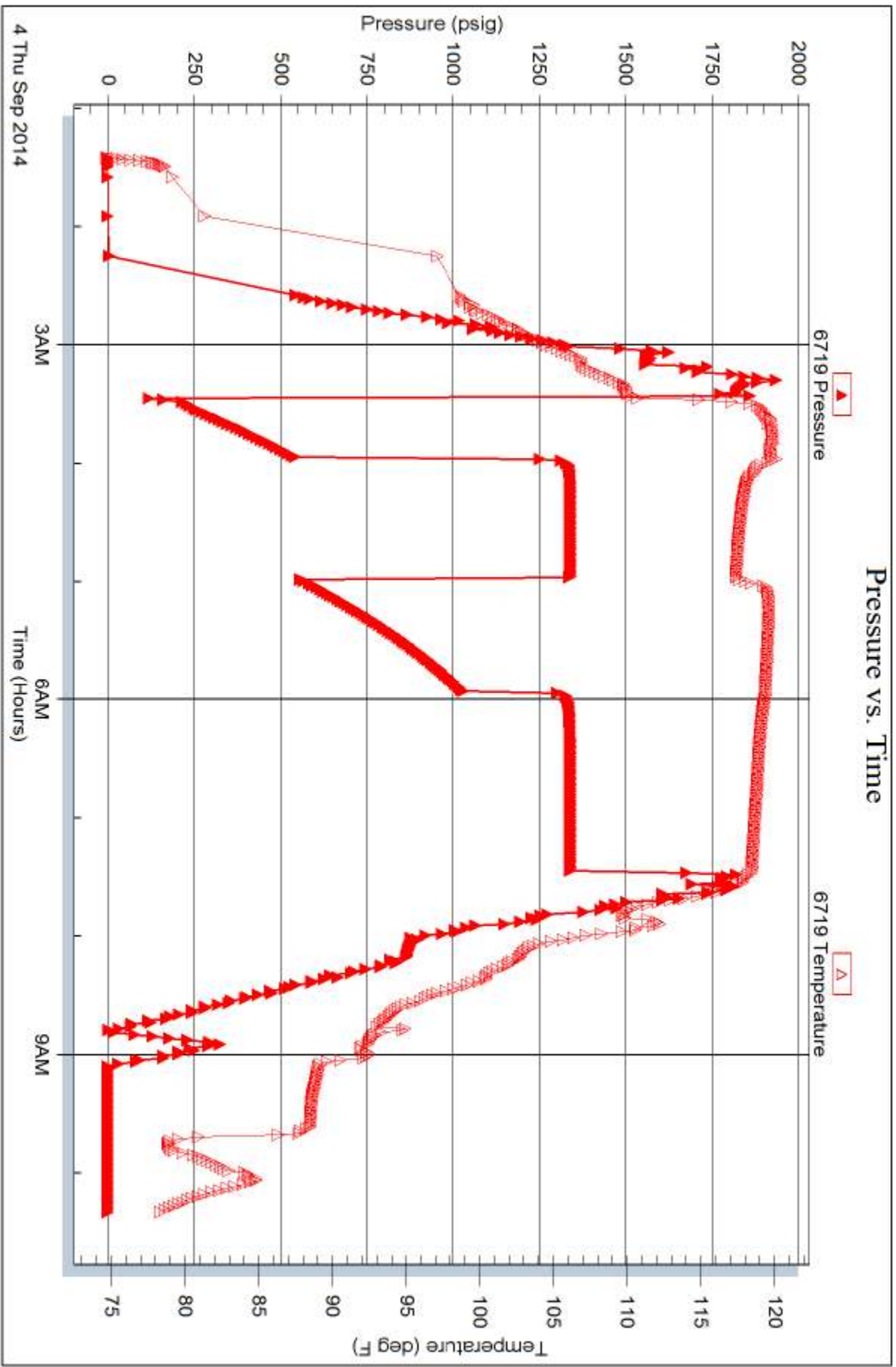
Serial #: 6719

Inside

Murfin Drilling Co. Inc.

Claypod #1-14

DST Test Number: 5



Trilobite Testing, Inc

Ref. No: 54140

Printed: 2014.09.05 @ 10:40:24



TRILOBITE TESTING INC.

1515 Commerce Parkway • Hays, Kansas 67601

Test Ticket

NO. 54249

Well Name & No. CLAYPOOL # 1-14 Test No. 1 Date 9-1-14
 Company MURFEN DRUG CO. INC. Elevation 1845 KB 1834 GL
 Address 250 N. WATER, STE. 300, WICHITA KS. 67202
 Co. Rep / Geo. CHUCK SCHMALTZ Rig MURFEN DRUG #21
 Location: Sec. 14 Twp. 23S Rge. 12W Co. STAFFORD State Ks.

Interval Tested 3367 - 3445' Zone Tested LANS. B-F
 Anchor Length 78' Drill Pipe Run 3106' Mud Wt. 9.3
 Top Packer Depth 3362' Drill Collars Run 248' Vis 57
 Bottom Packer Depth 3367' Wt. Pipe Run 0 WL 7.2 cc
 Total Depth 3445' Chlorides 7200 ppm System LCM 1#
 Blow Description IF: Weak blow. 12 - 2 1/2". ISI: No blow.

FF: Weak blow. 0 - 2". FSI: No blow.

Rec	Feet of	%gas	%oil	%water	%mud
<u>145</u>	<u>SGCM/w trace of oil</u>	<u>2</u>		<u>98</u>	
Rec	Feet of	%gas	%oil	%water	%mud
Rec	Feet of	%gas	%oil	%water	%mud
Rec	Feet of	%gas	%oil	%water	%mud
Rec	Feet of	%gas	%oil	%water	%mud

Rec Total 145 BHT 110° Gravity N/A API RW NC. @ — °F Chlorides 7200 ppm

(A) Initial Hydrostatic <u>1650</u>	<input checked="" type="checkbox"/> Test <u>1150</u>	T-On Location <u>0728</u>
(B) First Initial Flow <u>22</u>	<input checked="" type="checkbox"/> Jars <u>250</u>	T-Started <u>0907</u>
(C) First Final Flow <u>51</u>	<input checked="" type="checkbox"/> Safety Joint <u>75</u>	T-Open <u>1047</u>
(D) Initial Shut-In <u>1084</u>	<input type="checkbox"/> Circ Sub	T-Pulled <u>1450</u>
(E) Second Initial Flow <u>56</u>	<input type="checkbox"/> Hourly Standby	T-Out <u>1632</u>
(F) Second Final Flow <u>106</u>	<input checked="" type="checkbox"/> Mileage <u>72</u> <u>111.60</u>	Comments
(G) Final Shut-In <u>1084</u>	<input type="checkbox"/> Sampler	
(H) Final Hydrostatic <u>1600</u>	<input type="checkbox"/> Straddle	<input type="checkbox"/> Ruined Shale Packer
	<input type="checkbox"/> Shale Packer	<input type="checkbox"/> Ruined Packer
Initial Open <u>30</u>	<input type="checkbox"/> Extra Packer	<input type="checkbox"/> Extra Copies
Initial Shut-In <u>60</u>	<input type="checkbox"/> Extra Recorder	Sub Total <u>0</u>
Final Flow <u>60</u>	<input type="checkbox"/> Day Standby	Total <u>1586.60</u>
Final Shut-In <u>90</u>	<input type="checkbox"/> Accessibility	MP/DST Disc't
	Sub Total <u>1586.60</u>	

Approved By [Signature] Our Representative [Signature]

Trilobite Testing Inc. shall not be liable for damaged of any kind of the property or personnel of the one for whom a test is made, or for any loss suffered or sustained, directly or indirectly, through the use of its equipment, or its statements or opinion concerning the results of any test, tools lost or damaged in the hole shall be paid for at cost by the party for whom the test is made.



TRILOBITE TESTING INC.

1515 Commerce Parkway • Hays, Kansas 67601

Test Ticket

NO. 54250

Well Name & No. CLAYPOOL #1-14 Test No. 2 Date 9-2-14
 Company MURFIN DRILG. Co. INC. Elevation 1845 KB 1834 GL
 Address 250 N. WATER, STE. 300, WICHITA KS 67202
 Co. Rep / Geo. CHUCK SCHMALTZ Rig MURFIN DRILG. #2
 Location: Sec. 14 Twp. 23S Rge. 12W Co. STAFFORD State Ks

Interval Tested 3475-3610' Zone Tested LANS. G-L
 Anchor Length 135' Drill Pipe Run 3203' Mud Wt. 9.3
 Top Packer Depth 3470' Drill Collars Run 248' Vis 54
 Bottom Packer Depth 3475' Wt. Pipe Run 0 WL 8.2cc
 Total Depth 3610' Chlorides 7200 ppm System LCM 1#

Blow Description IF: Fair to strong blow. B.O.B. in 24 mins.
ISI: No blow.
FF: ~~Strong blow~~ Fair to strong blow. B.O.B. in 35 mins.
FSI: No blow.

Rec	Feet of	%gas	%oil	%water	%mud
<u>150</u>	<u>Gas in pipe</u>				
<u>150</u>	<u>SOCWM</u>	<u>3</u>	<u>47</u>	<u>50</u>	
<u>125</u>	<u>SOCMW</u>	<u>2</u>	<u>82</u>	<u>16</u>	
<u>315</u>	<u>MW/w few spots</u>		<u>97</u>	<u>3</u>	

Rec Total 590 Fluid BHT 112° Gravity N/A API RW .07 @ 86° F Chlorides 91,000 ppm
 (A) Initial Hydrostatic 1718 Test 1150 T-On Location 0438
 (B) First Initial Flow 29 Jars 250 T-Started 0458
 (C) First Final Flow 171 Safety Joint 75 T-Open 0637
 (D) Initial Shut-In 1123 Circ Sub _____ T-Pulled 1039
 (E) Second Initial Flow 175 Hourly Standby _____ T-Out 1251
 (F) Second Final Flow 289 Mileage 72 111.60 Comments _____
 (G) Final Shut-In 1114 Sampler _____
 (H) Final Hydrostatic 1648 Straddle _____ Ruined Shale Packer _____
 Shale Packer _____ Ruined Packer _____
 Extra Packer _____ Extra Copies _____
 Extra Recorder _____
 Day Standby _____
 Accessibility _____

Initial Open 30
 Initial Shut-In 60
 Final Flow 60
 Final Shut-In 90
 Sub Total 0
 Total 1586.60
 MP/DST Disc't _____
 Sub Total 1586.60

Approved By [Signature] Our Representative [Signature]
 Trilobite Testing Inc. shall not be liable for damaged of any kind of the property or personnel of the one for whom a test is made, or for any loss suffered or sustained, directly or indirectly, through the use of its equipment, or its statements or opinion concerning the results of any test, tools lost or damaged in the hole shall be paid for at cost by the party for whom the test is made.



TRILOBITE TESTING INC.

1515 Commerce Parkway • Hays, Kansas 67601

Test Ticket

NO. 57851

Well Name & No. CLAYPOOL #1-14 Test No. 3 Date 9-2-14
 Company MURFIN DRILLING CO. INC. Elevation 1845 KB 1834 GL
 Address 250 N. WATER, STE. 300, WICHITA KS. 67202
 Co. Rep / Geo. CHUCK SCHMALTZ Rig MURFIN DRILL #21
 Location: Sec. 14 Twp. 23S Rge. 12W Co. STAFFORD State KS

Interval Tested 3582 ~ 3666' Zone Tested PAWNEE
 Anchor Length 84' Drill Pipe Run 3326' Mud Wt. 9.4
 Top Packer Depth 3577' Drill Collars Run 248' Vis 62
 Bottom Packer Depth 3582' Wt. Pipe Run 0 WL 8.0cc
 Total Depth 3666' Chlorides 8,000 ppm System LCM 1#
 Blow Description IF: Work blow. 1/2". ISI: No blow.

FF: No blow. FSI: No blow.

Rec	Feet of	%gas	%oil	%water	%mud
<u>25</u>	<u>Drily Mud</u>				
Rec	Feet of	%gas	%oil	%water	%mud
Rec	Feet of	%gas	%oil	%water	%mud
Rec	Feet of	%gas	%oil	%water	%mud
Rec	Feet of	%gas	%oil	%water	%mud

Rec Total 25 BHT 111° Gravity N/A API RW N.C. @ 2 °F Chlorides 8,000 ppm
 (A) Initial Hydrostatic 1779 Test 1150 T-On Location 1957
 (B) First Initial Flow 26 Jars 250 T-Started 2030
 (C) First Final Flow 31 Safety Joint 75 T-Open 2222
 (D) Initial Shut-In 212 Circ Sub _____ T-Pulled 0129
 (E) Second Initial Flow 34 Hourly Standby _____ T-Out 0319
 (F) Second Final Flow 34 Mileage 72 111.60 Comments _____
 (G) Final Shut-In 119 Sampler _____
 (H) Final Hydrostatic 1763 Straddle _____ Ruined Shale Packer _____
 Shale Packer _____ Ruined Packer _____
 Extra Packer _____ Extra Copies _____
 Initial Open 30 Extra Recorder _____ Sub Total 0
 Initial Shut-In 60 Day Standby _____ Total 1586.60
 Final Flow 30 Accessibility _____ MP/DST Disc't _____
 Final Shut-In 60 Sub Total 1586.60

Approved By [Signature] Our Representative [Signature]
 Trilobite Testing Inc. shall not be liable for damaged of any kind of the property or personnel of the one for whom a test is made, or for any loss suffered or sustained, directly or indirectly, through the use of its equipment, or its statements or opinion concerning the results of any test, tools lost or damaged in the hole shall be paid for at cost by the party for whom the test is made.



TRILOBITE TESTING INC.

1515 Commerce Parkway • Hays, Kansas 67601

Test Ticket

NO. 54139

Well Name & No. Clay Pool # 1-14 Test No. 4 Date 9/3/14
 Company Murfin Drilling Co. Inc. Elevation 1845 KB 1834 GL
 Address 250 N. Water, STE 300 Wichita, KS. 67202
 Co. Rep / Geo. Chuck Schmaltz Rig Murfin Rig # 21
 Location: Sec. 14 Twp. 23s Rge. 12w Co. Stallord State Ks.

Interval Tested 3648 - 3737 Zone Tested Ocala
 Anchor Length 89' Drill Pipe Run 3377 Mud Wt. 9.5
 Top Packer Depth 3643 Drill Collars Run 248 Vis 62
 Bottom Packer Depth 3648 Wt. Pipe Run 8 WL 9.2
 Total Depth 3737 Chlorides 8,500 ppm System LCM 1/2th

Blow Description IF: Weak blow. Surf. - 1 1/2".
ISI: No blow.
FF: Weak blow. Surf. - 1/4".
FSI: No blow.

Rec	Feet of	%gas	%oil	%water	%mud
<u>60</u>	<u>Drilg Mud w/slt for oil</u>			<u>100</u>	
Rec	Feet of	%gas	%oil	%water	%mud
Rec	Feet of	%gas	%oil	%water	%mud
Rec	Feet of	%gas	%oil	%water	%mud
Rec	Feet of	%gas	%oil	%water	%mud

Rec Total 60' BHT 112° Gravity N.A. API RW N.C. @ — °F Chlorides 8,500 ppm

(A) Initial Hydrostatic	<u>1920</u>	<input checked="" type="checkbox"/> Test	<u>1150</u>	T-On Location	<u>0912</u>
(B) First Initial Flow	<u>54</u>	<input checked="" type="checkbox"/> Jars	<u>250</u>	T-Started	<u>0926</u>
(C) First Final Flow	<u>69</u>	<input checked="" type="checkbox"/> Safety Joint	<u>75</u>	T-Open	<u>1124</u>
(D) Initial Shut-In	<u>878</u>	<input type="checkbox"/> Circ Sub		T-Pulled	<u>1529</u>
(E) Second Initial Flow	<u>73</u>	<input type="checkbox"/> Hourly Standby		T-Out	<u>1719</u>
(F) Second Final Flow	<u>89</u>	<input checked="" type="checkbox"/> Mileage	<u>629</u> 1111.6011	Comments	
(G) Final Shut-In	<u>815</u>	<input type="checkbox"/> Sampler			
(H) Final Hydrostatic	<u>1770</u>	<input type="checkbox"/> Straddle		<input type="checkbox"/> Ruined Shale Packer	

Initial Open 30
 Initial Shut-In 60
 Final Flow 60
 Final Shut-In 90

Shale Packer
 Extra Packer
 Extra Recorder
 Day Standby
 Accessibility

Sub Total 1586.60

Total 1586.60
 MP/DST Disc't _____

Approved By _____ Our Representative Matthew A. Smith

Trilobite Testing Inc. shall not be liable for damaged of any kind of the property or personnel of the one for whom a test is made, or for any loss suffered or sustained, directly or indirectly, through the use of its equipment, or its statements or opinion concerning the results of any test, tools lost or damaged in the hole shall be paid for at cost by the party for whom the test is made.



TRILOBITE TESTING INC.

1515 Commerce Parkway • Hays, Kansas 67601

Test Ticket

NO. 54140

Well Name & No. Clay Pool # 1-14 Test No. 5 Date 9/4/14
 Company Murfin Drilling Co. Inc. Elevation 1845 KB 1834 GL
 Address 250 N. Water, STE 300 Wichita, KS, 67202
 Co. Rep / Geo. Chuck Schmaltz Rig Murfin Rig # 21
 Location: Sec. 14 Twp. 23S Rge. 12W Co. STAFFORD State KS.

Interval Tested 3712 - 3797 Zone Tested Arbuckle
 Anchor Length 85' Drill Pipe Run 3,449' Mud Wt. 9.5
 Top Packer Depth 3707 Drill Collars Run 248 Vis 62
 Bottom Packer Depth 3712 Wt. Pipe Run 2 WL 9.2
 Total Depth 3797 Chlorides 8,500 ppm System LCM 1/2#

Blow Description IF: Strong blow. B.O.B. in 2 1/2 mins.
ISI: No blows.
FF: Strong blow. B.O.B. in 3 mins.
FSI: No blow.

Rec	Feet of	%gas	%oil	%water	%mud
<u>1172</u>	<u>MCW</u>			<u>70</u>	<u>30</u>
<u>576</u>	<u>MCW</u>			<u>98</u>	<u>2</u>
<u>124</u>	<u>GOMCW</u>	<u>2</u>	<u>1</u>	<u>72</u>	<u>25</u>
<u>62</u>	<u>SOMCW</u>	<u>Trace oil</u>		<u>96</u>	<u>4</u>
<u>62</u>	<u>GWCM</u>	<u>2</u>		<u>18</u>	<u>80</u>

Rec Total 1996' BHT 117° Gravity N.A. API RW .35 @ 79 ° F Chlorides 19,000 ppm

(A) Initial Hydrostatic 1819 Test 1150 T-On Location 0119
 (B) First Initial Flow 111 Jars 250 T-Started 0124
 (C) First Final Flow 546 Safety Joint 75 T-Open 0326
 (D) Initial Shut-In 1341 Circ Sub _____ T-Pulled 0728
 (E) Second Initial Flow 552 Hourly Standby _____ T-Out 1019
 (F) Second Final Flow 1033 Mileage 629 111.60 Comments _____
 (G) Final Shut-In 1341 Sampler _____
 (H) Final Hydrostatic 1819 Straddle _____

Shale Packer 250 Ruined Shale Packer _____
 Extra Packer _____ Ruined Packer _____
 Extra Recorder _____ Extra Copies _____
 Initial Open 30 Day Standby _____ Sub Total 0
 Initial Shut-In 60 Accessibility _____ Total 1836.60
 Final Flow 60 Sub Total 1836.60 MP/DST Disc't _____
 Final Shut-In 90

Approved By [Signature] Our Representative Matthew A. Smith

Trilobite Testing Inc. shall not be liable for damaged of any kind of the property or personnel of the one for whom a test is made, or for any loss suffered or sustained, directly or indirectly, through the use of its equipment, or its statements or opinion concerning the results of any test, tools lost or damaged in the hole shall be paid for at cost by the party for whom the test is made.