

**TRILOBITE
TESTING, INC.**

DRILL STEM TEST REPORT

Blue Goose Drilling Company, Inc

33-17-27 Lane Co KS

P.O. Box 1413
Great Bend Ks
67530
ATTN: Vern Schrag

Borell F 1

Job Ticket: 57653

DST#: 1

Test Start: 2014.05.11 @ 21:35:15

GENERAL INFORMATION:

Formation: **K**
 Deviated: No Whipstock: ft (KB)
 Time Tool Opened: 00:23:00
 Time Test Ended: 04:16:00
 Interval: **4247.00 ft (KB) To 4265.00 ft (KB) (TVD)**
 Total Depth: 4265.00 ft (KB) (TVD)
 Hole Diameter: 7.88 inches Hole Condition: Fair
 Test Type: Conventional Bottom Hole (Initial)
 Tester: Mike Roberts
 Unit No: 65
 Reference Elevations: 2679.00 ft (KB)
 2672.00 ft (CF)
 KB to GR/CF: 7.00 ft

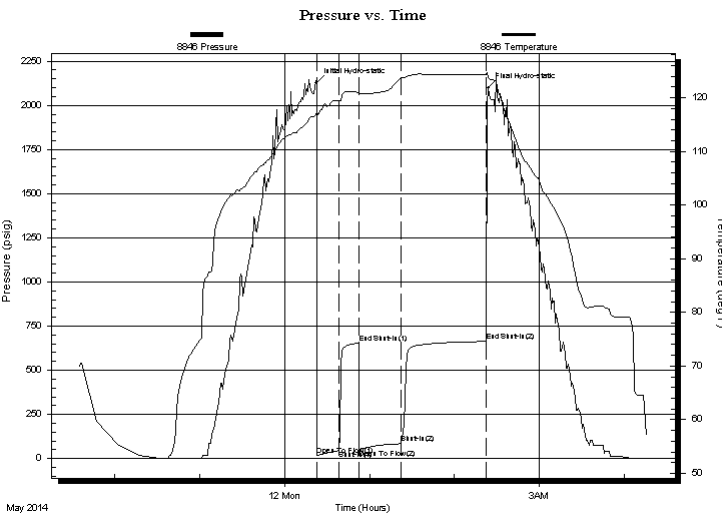
Serial #: 8846

Inside

Press@RunDepth: 84.93 psig @ 4260.00 ft (KB) Capacity: 8000.00 psig
 Start Date: 2014.05.11 End Date: 2014.05.12 Last Calib.: 2014.05.12
 Start Time: 21:35:15 End Time: 04:16:00 Time On Btm: 2014.05.12 @ 00:22:45
 Time Off Btm: 2014.05.12 @ 02:24:00

TEST COMMENT: IF:No blow
 IS:Built to 1"
 FF:Built to 1/2" blow
 FS:No blow

PRESSURE SUMMARY



Time (Min.)	Pressure (psig)	Temp (deg F)	Annotation
0	2126.99	117.31	Initial Hydro-static
1	18.94	116.26	Open To Flow (1)
16	48.92	119.44	Shut-In(1)
30	655.14	120.95	End Shut-In(1)
30	53.57	120.65	Open To Flow (2)
60	84.93	123.63	Shut-In(2)
120	663.34	124.36	End Shut-In(2)
122	2099.42	124.02	Final Hydro-static

Recovery

Length (ft)	Description	Volume (bbl)
62.00	mud 100%m	0.30
62.00	w cm 1%w 99%m	0.30
10.00	ocw m 1%o 2%w 97%m 1ft oil on top	0.14

Gas Rates

Choke (inches)	Pressure (psig)	Gas Rate (MMcf/d)

Serial #: 8846

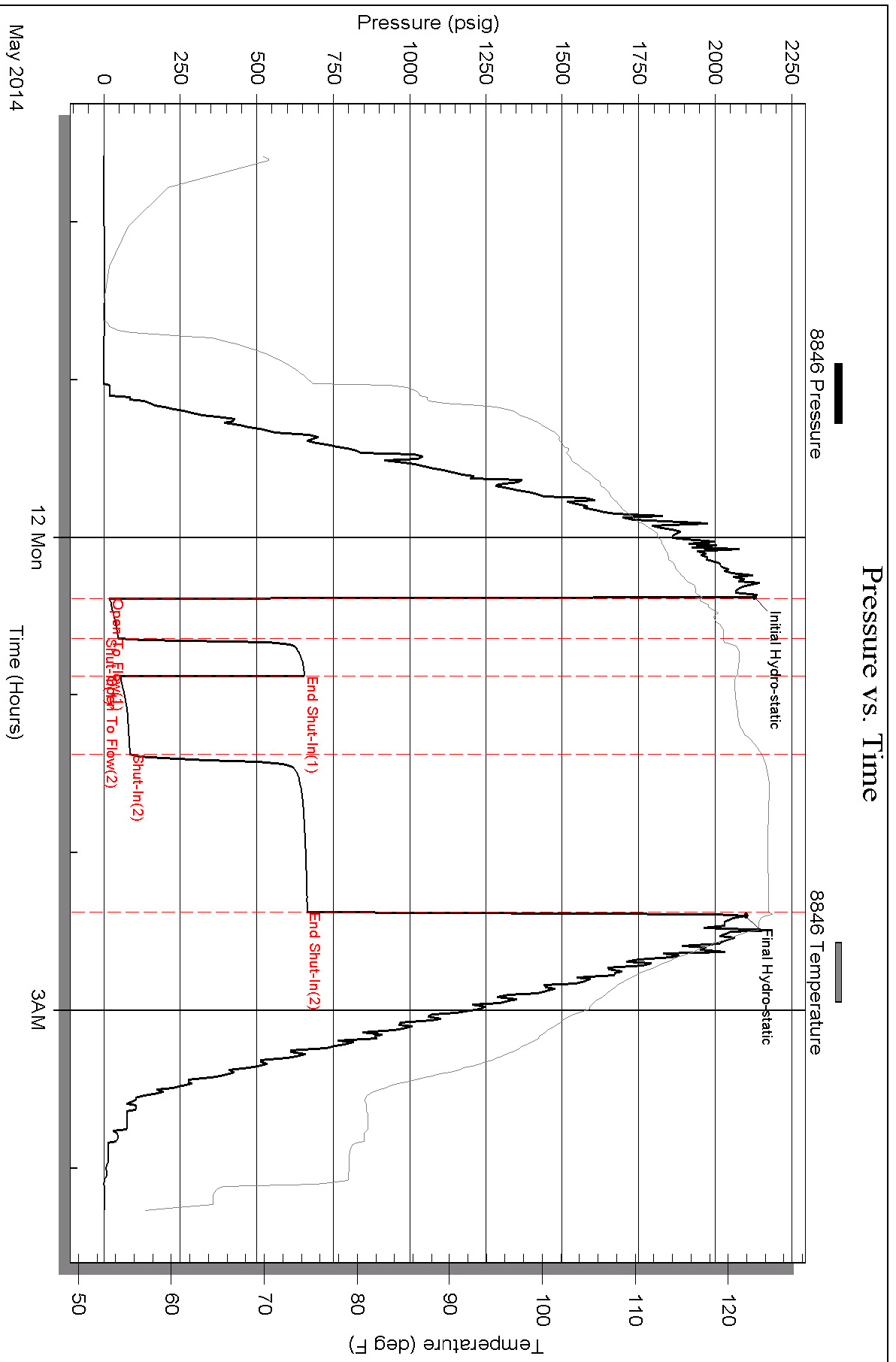
Inside

Blue Goose Drilling Company, Inc

Borell F-1

DST Test Number: 1

Pressure vs. Time



Triobite Testing, Inc

Ref. No: 57653

Printed: 2014.05.12 @ 07:04:24