

**TRILOBITE  
TESTING, INC.**

# DRILL STEM TEST REPORT

Blue Goose Drilling Company, Inc

**33-17-27 Lane Co KS**

P.O. Box 1413  
Great Bend Ks  
67530  
ATTN: Vern Schrag

**Borell F 1**

Job Ticket: 57656

**DST#: 4**

Test Start: 2014.05.15 @ 04:57:00

## GENERAL INFORMATION:

Formation: **Cherokee**

Deviated: No Whipstock: ft (KB)

Time Tool Opened: 06:58:15

Time Test Ended: 10:39:15

Test Type: Conventional Bottom Hole (Reset)

Tester: Mike Roberts

Unit No: 65

**Interval: 4516.00 ft (KB) To 4582.00 ft (KB) (TVD)**

Reference Elevations: 2679.00 ft (KB)

Total Depth: 4582.00 ft (KB) (TVD)

2672.00 ft (CF)

Hole Diameter: 7.88 inches Hole Condition: Fair

KB to GR/CF: 7.00 ft

**Serial #: 8846 Inside**

Press@RunDepth: 39.49 psig @ 4519.00 ft (KB)

Capacity: 8000.00 psig

Start Date: 2014.05.15 End Date: 2014.05.15

Last Calib.: 2014.05.15

Start Time: 03:57:15 End Time: 09:39:15

Time On Btm: 2014.05.15 @ 05:58:00

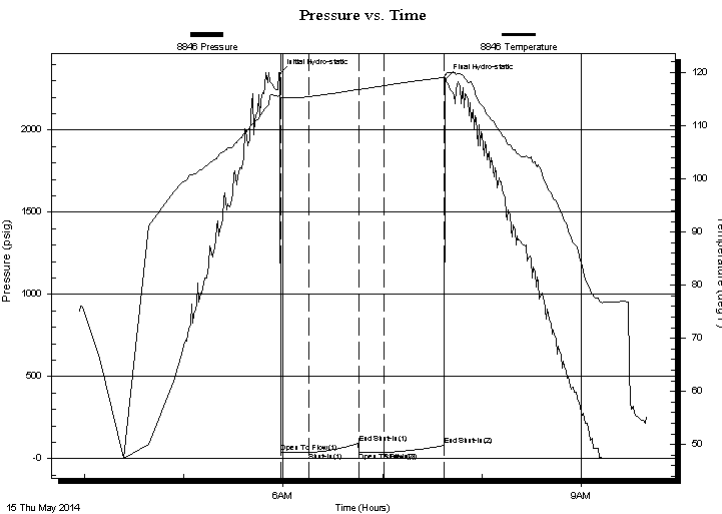
Time Off Btm: 2014.05.15 @ 07:38:00

TEST COMMENT: IF: Built to weak surface blow

IS: No return blow

FF: No blow

FS: No return blow



## PRESSURE SUMMARY

Time (Min.)	Pressure (psig)	Temp (deg F)	Annotation
0	2342.72	115.62	Initial Hydro-static
1	37.12	114.67	Open To Flow (1)
18	38.84	115.48	Shut-In(1)
48	94.10	116.85	End Shut-In(1)
48	41.21	116.82	Open To Flow (2)
63	39.49	117.54	Shut-In(2)
99	80.37	119.11	End Shut-In(2)
100	2310.80	119.72	Final Hydro-static

## Recovery

Length (ft)	Description	Volume (bbl)
5.00	thick mud w with oil spots 100%m	0.02

## Gas Rates

Choke (inches)	Pressure (psig)	Gas Rate (MMcf/d)

\* Recovery from multiple tests

Serial #: 8846

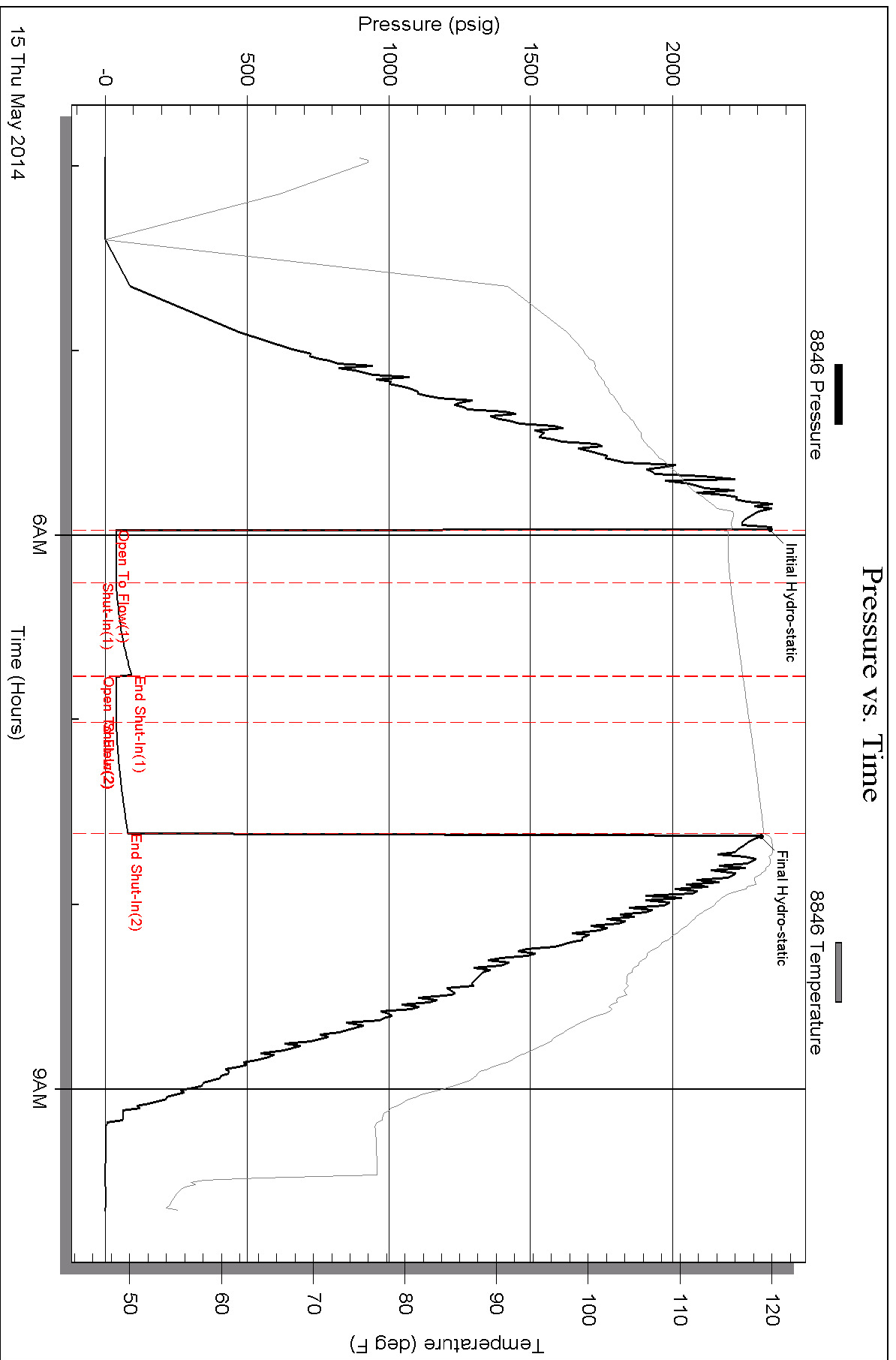
Inside

Blue Goose Drilling Company, Inc

Borel F 1

DST Test Number: 4

### Pressure vs. Time



Triobite Testing, Inc

Ref. No: 57656

Printed: 2014.05.15 @ 09:57:19