

sh, vcol, gn-red-gy

ls, bm, f xln, ns

sh, blk

sh, gy

ss, lt gy-lt gn gy, vf gr, flor 20% spl, sl od, scum free o

sh, gy

**Bartlesville Ss 2766(-1416)**

ss, lt gy-lt bm, vf gr, p-fr por, sp flor 10% spl, ft od, sso

ss, lt gy-lt bm stm, f gr, fr-g por, bri flor 50% spl, fr od, sho free o, gas bubbles

ss, f-med gr, ang, mica, glauc, feld, lt bm stnd, g od, bri flor 70% spl, g sho gassy o, g stmg cut few pcs aa /tite wht cmt

Siltst, gy, mics, f gr ss lam, ns

Pyr, abunt, as mnfzd ss,

ss, lt gy-lt tan, med gr, g por, bri flor, sho free oil

ss, lt gy, med gr, sub ang, mica, glauc, carb, g intgr por, gd cut, strong od, sho free tarry o, gassy

sh, dk gy

Cht, wh-gy-o-mg-gn, fresh, sharp,

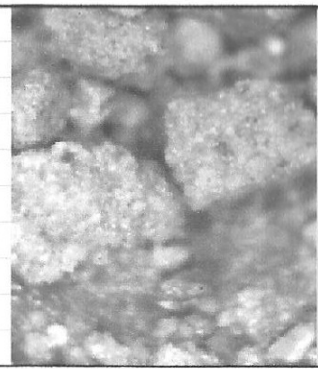
Dol, lt bm, med xln, fr por, ns

sh, lt gn, slty

dol, lt-gy-lt gn gy, f-med xln, fr por, cht, orange-opaline, fresh, sharp,

**"Cowley" facies 2860(-1510)**

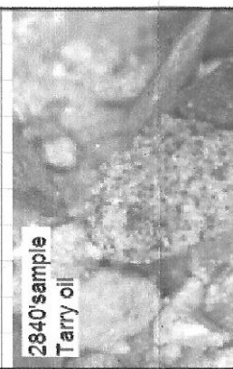
dol, dk bm, med xln, arg, glauc, ns



2806-2820 Siltstone w/ ss laminations

Mississippi Chert 2840(-1490)

Miss. Dolomite 2844(-1494)



2840 sample Tarry oil

ROP (mhy/ft.) 10  
GAMMA3 (units) 100

Positive Residual Florescence